

DECEMBER 26, 2021 • THE HOLY FAMILY OF JESUS, MARY AND JOSEPH

ST. MARY'S VISITATION

Catholic Parish  Elm Grove, WI

OUR PARISH

MASSES

Sunday Mass Schedule

Saturday Vigil..... 4pm
Sunday .. 7:30am, 9am, 10:30am, and
2pm (Latin Mass)

Daily Mass Schedule

Monday- Friday 6:30am
Tuesday and Friday 8am
(during school year only)
Saturday 8am

RECONCILIATION

Wednesdays 7am
Fridays 2-5pm
Saturday 8:30am

HOLY DAYS

Mary Mother of God..... Jan. 1
Assumption..... Aug. 15
All Saints Nov. 1
Immaculate Conception.....Dec. 8
ChristmasDec. 25
*Mass schedules for Holy Days are
announced in the bulletin.*

PARISH ADDRESS

1260 Church Street, Elm Grove, 53122
Phone: 262-782-4575
Website: stmaryeg.org

PARISH OFFICE HOURS

Monday-Thursday9am-3:30pm
Friday..... 9am-noon

SCHOOL ADDRESS

13000 Juneau Blvd. Elm Grove, 53122
Phone: 262-782-7057
Website: stmaryeg.org

ST. MARY'S THRIFT SHOP

262-784-6644
Mon/Tues/Thurs/Fri..... .9am-4pm
Saturdays. 9am-1pm



MISSION STATEMENT

We are a community of believers who strive to be faithful and to teach the truth of the Roman Catholic Church. We see beauty in the sacramental life of the Church, especially in the Holy Sacrifice of the Mass and in adoration of Jesus in the Blessed Sacrament. We promote goodness in this world, following the example of our Blessed Mother, our Lady of the Visitation, by serving the needs of others.

THE PARISH

1260 Church Street
Elm Grove, WI 53122

Phone.....262-782-4575
Thrift Shop262-784-6644
Website.....stmaryeg.org

STAFF

Pastor..... Fr. Peter Berger
Associate Pastor... Fr. Patrick Behling
pbehling@stmaryeg.org
Assisting Priest Fr. David Filut
Deacon Richard Piontek
Deacon Dick Niggemann
niggemannr@archmil.org
Director of Finance Cheryl Peters
cpeters@stmaryeg.org
Financial Assistant Monica Hiller
mhiller@stmaryeg.org
Human Concerns..... Mary Sue Protz
msprotz@stmaryeg.org
Communications..... Nora Mihm
nmihm@stmaryeg.org
Administrative Asst..... Chris Kinzy
ckinzy@stmaryeg.org
Director of Music..... Julie Cucunato
jcucunato@stmaryeg.org
Organist..... Michel Shestak
mshestak@stmaryeg.org
Office Manager..... Liz Steybe
lsteybe@stmaryeg.org
Catholic Formation
Director Josh Dieterich
jdieterich@stmaryeg.org
Co-Director Elizabeth Harrison
eharrison@stmaryeg.org
Cemetery Sexton.....Mike George
mgeorge@stmaryeg.org
Thrift Shop..... Terri Maciejewski
tmaciejewski@stmaryeg.org
Receptionist.....Heidi Steigerwald
hsteigerwald@stmaryeg.org
Receptionist..... Bernadette Stephens
bstephens@stmaryeg.org
Trustee..... Gordon Giampietro
Trustee..... James Carrig

THE SCHOOL

13000 Juneau Blvd.
Elm Grove, WI 53122

Phone.....262-782-7057
Website..... stmaryeg.org

Principal..... Mary Tretow
mtretow@stmaryeg.org
Secretary Kris Dries
kdries@stmaryeg.org



POSTINGS FROM FATHER PETER

MERRY CHRISTMAS!

After all the preparations of the season – the cooking and baking and wrapping and shopping and hosting and decorating and cleaning, Christmas is upon us! What a joyful day! And not only a joyful day but an entire liturgical season – the Christmas Season – in which to enjoy the great gift of the birth of the Redeemer. While so much of our society moves on from Christmas on December 26th, we have many wonderful feasts to celebrate which keeps the beauty of Christmas front and center during the cold winter days. In fact, the Church’s traditional celebration of Christmastide goes all the way until February 2nd and the feast that is known as Candlemas. So I encourage you to keep your decorations up and the tree alight as long as you can in celebration of this great and marvelous feast, when “the Word was made flesh and dwelt among us.” I thought I would include some words from St. Alphonsus Liguori on this great day and season of rejoicing, from his *Discourse for Christmas Night*:

“Arise, all ye nobles and peasants; Mary invites all, rich and poor, just and sinners, to enter the cave of Bethlehem, to adore and to kiss the feet of her new-born Son. Go in, then, all ye devout souls; go and see the Creator of heaven and earth on a little hay, under the form of a little Infant; but so beautiful that he sheds all around rays of light. Now that he is born and is lying on the straw, the cave is no longer horrible, but it is become a paradise. Let us enter; let us not be afraid. Let every soul, then, enter. Behold and see that tender Infant, who is weeping as he lies in the manger on that miserable straw. See how beautiful he is; look at the light when he sends forth, and the love which he breathes; those eyes send out arrows which wound the hearts that desire him; the very stable, the very straw, cry out, says St. Bernard, and tell you to love him who loves you; to love God, who is infinite love; and who came down from heaven, and made himself a little child, and became poor, to make you understand the love he bears you, and to gain your love by his sufferings.

Now then, O all ye devout souls, does Jesus invite you to come and kiss his feet this night. The shepherds who came to visit him in the stable of Bethlehem brought their gifts; you must also bring your gifts. What will you bring him? Listen to me; the most acceptable present you can bring him is that of a contrite and loving heart.”

On behalf of myself and Fr. Behling and the entire parish staff, a joyful and blessed Christmas to you!

MASS INTENTIONS

Monday, December 27, Saint John, Apostle & Evangelist

6:30am † Eugene Gloudeman

Tuesday, December 28, The Holy Innocents, Martyrs

6:30am St. Mary's Homebound Parishioners

Wednesday, December 29, Fifth Day Within the Octave of the Nativity of the Lord

6:30am † Bob Schwaab

Thursday, December 30, Sixth Day Within the Octave of the Nativity of the Lord

6:30am The Intention of Gianna Tripoli

Friday, December 31, Seventh Day Within the Octave of the Nativity of the Lord

6:30am Victims of the Kentucky tornadoes

Saturday, January 1, Solemnity of Mary, Mother of God

8:00am Parishioners

10:00am Latin Mass

4:00pm St. Mary's Visitation Staff and Prayer Group

Sunday, January 2, The Epiphany of the Lord

7:30am Parishioners

9:00am † Betty Jean Waldron

10:30am † John Dockery

2:00pm † Lucy Traugott (Latin Mass)

READINGS

Readings for the Week of December 26, 2021

Sunday: Sir 3:2-6, 12-14/Ps 128:1-2, 3, 4-5 [cf. 1]/Col 3:12-21 or 3:12-17/Lk 2:41-52 or 1 Sm 1:20-22, 24-28/Ps 84:2-3, 5-6, 9-10 [cf. 5a]/1 Jn 3:1-2, 21-24/Lk 2:41-52

Monday: 1 Jn 1:1-4/Ps 97:1-2, 5-6, 11-12 [12]/Jn 20:1a, 2-8

Tuesday: 1 Jn 1:5—2:2/Ps 124:2-3, 4-5, 7b-8 [7]/Mt 2:13-18

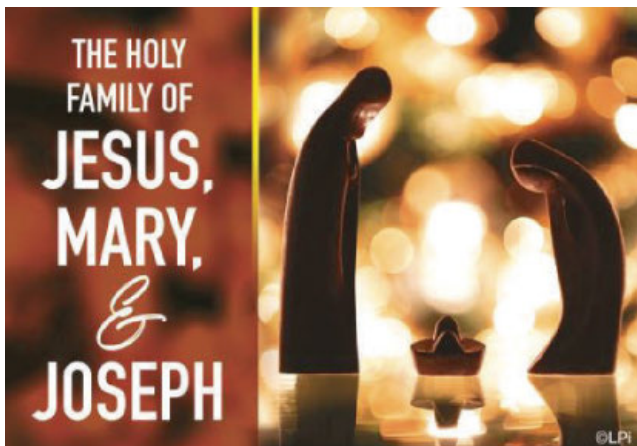
Wednesday: 1 Jn 2:3-11/Ps 96:1-2a, 2b-3, 5b-6 [11a]/Lk 2:22-35

Thursday: 1 Jn 2:12-17/Ps 96:7-8a, 8b-9, 10 [11a]/Lk 2:36-40

Friday: 1 Jn 2:18-21/Ps 96:1-2, 11-12, 13 [11a]/Jn 1:1-18

Saturday: Nm 6:22-27/Ps 67:2-3, 5, 6, 8 [2a]/Gal 4:4-7/Lk 2:16-21

Next Sunday: Is 60:1-6/Ps 72:1-2, 7-8, 10-11, 12-13 [cf. 11]/Eph 3:2-3a, 5-6/Mt 2:1-12



REGISTRATION & SACRAMENTS

PARISH REGISTRATION

St. Mary's Visitation is always happy to welcome new members! If you are interested in joining the parish, please visit our website. www.stmaryeg.org/grow-with-us.html and complete our registration form. Please contact nmihm@stmaryeg.org with any questions.

BAPTISM PREPARATION

Children ages 6 and under: Those seeking to have children baptized should be registered, active members of St. Mary's Visitation Parish. Parents who request baptism for a child are expected to complete a preparation class. It is offered bi-monthly. The scheduled classes for 2021 include:

Saturday, January 8th from 10:30-11:30am in church

It is generally easier if the preparation is done before the birth of the child. If you have attended a session within the last five years, it is not necessary to retake the class. To schedule a baptism, please view the baptism dates on the parish website, www.stmaryeg.org/baptism. Please contact Liz Steybe at 262-782-4485 or lsteybe@stmaryeg.org for more information or to register for the baptism class.

Children ages 6-12: Please contact Josh Dieterich, 262-782-4575 or jdieterich@stmaryeg.org.

Adults ages 12 and up: Adults who wish to join the Catholic Church and were not baptized can participate in the Rite of Christian Initiation for Adults (RCIA). Please contact Josh Dieterich, Director of Catholic Formation, 262-782-4575 or jdieterich@stmaryeg.org.

THE SACRAMENT OF MATRIMONY

The Catholic Church takes preparation for the Sacrament of Matrimony very seriously. Generally at least 6 months should be allowed for this preparation. Engaged couples themselves should visit our website, www.stmaryeg.org/contact-us.html and go to the weddings section to fill out a Marriage Request Form. Contact Liz Steybe for more information, lsteybe@stmaryeg.org or 262-782-4575.

THE SACRAMENT OF THE SICK

If you know of someone who is in the hospital or is in need of the Sacrament of the Anointing of the Sick, please contact the Parish Office for more information, 262-782-4575.

PARISH CALENDAR

Sunday, December 26

7:30am Mass
 9am Mass
 10:30am Mass
 2pm Latin Mass

Monday, December 27

6:30am Mass
 9am-4pm Thrift Shop Open
 6pm SMV Men's Group, Senior Center

Tuesday, December 28

6:30am Mass
 9am-4pm Thrift Shop Open

Wednesday, December 29

Thrift Shop Closed
 6:30am Mass
 7am Reconciliation
 9am Patriotic Rosary, Church
 2-5pm Reconciliation
 4pm Choir Rehearsals, Church

Thursday, December 30

6:30am Mass
 9am-4pm Thrift Shop Open
 7pm Men's Choir Practice

Friday, December 31

Parish Office Closes at noon
 6:30am Mass
 9am Holy Dusters
 9am-4pm Thrift Shop Open

Saturday, January 1

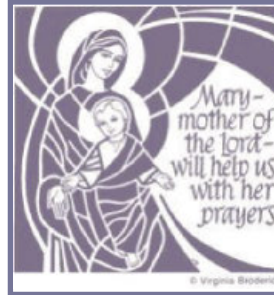
7am AA Meeting, Senior Center
 8am Mass
 8:45am Reconciliation
 10am Latin Mass
 4pm Mass

Sunday, January 2

7:30am Mass
 9am Mass
 10:30am Mass
 2pm Latin Mass

THANK YOU FOR SUPPORTING OUR MILITARY

To Everyone at St. Mary's,
 A huge thank you to each and every one of you for your amazing dedication and continued support to our wonderful military. Hunzinger Construction's Christmas shipment was another success because of wonderful people like you! Since 2006, over 71 tons have been shipped overseas to our brave men and women. None of this could be possible without you. Wishing you all a merry and blessed Christmas and happy and healthy 2022.
 Sincerely, Sarah Sandkuhler, Hunzinger Construction



Solemnity of Mary, Mother of God

The Solemnity of Mary is not a Holy Day of Obligation this year.

Our Mass schedule that day is 8am, 10am (Latin Mass) and 4pm (Sunday obligation)

The Parish Offices will close at noon on Friday, December 31.



ADORATION CHAPEL

A Blessed, Merry Christmas to all! May you receive the gift of Faith, the blessing of Hope, and the peace of God's Love this Christmas and always!

The coming week is filled with so many important feast days, the most important of course is the feast of the Nativity. On Sunday, the 26th we celebrate the Feast of the Holy Family. In the opening prayer of the Mass we ask, *"O God who were pleased to give us the shining example of the Holy Family, graciously grant that we may imitate them in practicing the virtues of family life and in the bonds of charity, and so, in the joy of your house, delight in eternal rewards."* What a wonderful world this would be if all people took this to heart. Visit the St. Mary's Perpetual Adoration Chapel and pray for your family and all families of the world, that they may emulate the Holy Family. Give thanks to God for the gift of your family and for the gift of being a member of His family.

On December 27th we remember St. John, the apostle and evangelist, who authored the fourth Gospel, the book of Revelation, and the three letters that bear his name. On the 28th we honor the Holy Innocents — the male children who were killed instead of Jesus by King Herod. Commemorate these feasts by visiting the Chapel. Give thanks to Jesus for all His blessings and ask Him to guide you through your life, so that you may join Him and all the saints in Heaven for all eternity.

We need coverage:

- Wednesdays, 4-5pm. Call Joleen Gordon, 262-789-6766.
- Saturdays, 9-10pm. Call Nancy Frazer, 262-786-0617.
- Saturdays, 10-11pm. Call Nancy Frazer, 262-786-0617.

OUR 2022 PARISH CALENDARS HAVE ARRIVED

Our 2022 parish calendars, sponsored by Becker Ritter Funeral Home, are available in the Atrium and rear vestibule of church. Please be sure to pick up your complimentary copy.



END OF YEAR CONTRIBUTIONS

St. Mary's Visitation Parish, School and other ministries owe their success to the generous donations of its parishioners. We appreciate your contributions throughout the calendar year. Were you aware that historically 18% of all general stewardship donations are received in the month of December? We count on and appreciate being included in your end of year giving again this year, thank you! According to IRS regulations, all contributions must be physically received by the close of business on December 31st to be considered donations in the 2021 calendar year. St. Mary's Parish Office will be open until noon on Friday, December 31st. Donations received at the New Year's Day Masses will be recorded as 2022 contributions.

GOOD GRIEF CLASS BEGINS IN MARCH

Losing a loved one can be one of the most difficult, painful things we experience in our lives. To help people through their grief journey, St. Mary's offers a 12 week "Good Grief" support group led by certified Grief Counselor, Deacon Tom Binder. Previous participants have experienced significant healing and have rediscovered peace, joy, and love in their lives. If you're ready to move forward in your grief journey and smile again, why not join us? You'll be so glad you took this first step.



Good Grief will be held for 12 consecutive weeks on Wednesday mornings, March 9th through May 25th from 10-11:30am. Class will be held at Becker Ritter Funeral Home, 14075 W North Ave, Brookfield. The class is free of charge. Due to COVID, masks are required.

A 12-week commitment is very important. Class size is limited, and registration is required. For more information, contact Mary Sue Protz, msprotz@stmaryeg.org or 262-782-4575.

VIBE BIBLE STUDY IS BACK

The annual *Visitation Institute Bible Encounter (VIBE)* is back again this January. Please consider joining us as we keep working our way through the New Testament. This year we will be studying the "Catholic Letters" of Sts. Peter, James, and Jude. The classes meet each Thursday morning from 9:30-11:15am beginning on January 6th, and running through February 24th and are taught by Josh Dieterich and Fr. Patrick Behling. The classes will be in the Attic Boardroom or the Senior Center depending on numbers. Come join other parishioners in this exciting opportunity to encounter the Lord in his written Word. For more information and/or to register, please contact Josh Dieterich, jdieterich@stmaryeg.org.



SCHOOL CALENDAR

Christmas Break through January 3, 2022

SCHOOL NEWS

SCHOOL ENROLLMENT FOR PARISHIONERS

SMV parishioners new to the school can now enroll their children for the 2022-23 school year. Please check out our website, www.stmaryeg.org/learn-with-us.html. There you will find a link to meet our teachers and take a virtual tour of our school. All are invited to join us for our Open House on January 30 from 8:30-11:30am. Contact the school office at 262-782-7057 with any questions.



TOUR OUR SCHOOL | MEET OUR TEACHERS | MEET OUR FAMILIES | EXPERIENCE OUR COMMUNITY



Offering both a full day and half day K-3 program
NOW ENROLLING

Call to schedule a tour today! **262.782.7057**

ANNUAL SMV AUCTION FOR EDUCATION

The Annual SMV Auction for Education is making a comeback IN PERSON! We hope you will be able to join us on March 26, 2022 to celebrate our theme: Peace, Love & Prayer.



Planning for the Annual Auction for Education is underway, and we need your help to make SMV's largest fundraiser of the year our most successful to date! We are looking for sponsorships, auction items and monetary donations.

Our auction website is fully up and running, you can make online donations, sponsorships, or auction item donations. Visit <http://bidpal.net/smv2022>.

We appreciate your consideration and generosity! Contact Kara Cartledge and the Auction Team with any questions or comments at auction@stmaryeg.org.



The Christmas Poinsettias have been donated to our Church during this joyous holiday season in honor or memory of each of the following:



Dr. Joseph and Claire Adiletta
 Charles and Florence Albrecht
 Chris Albrecht
 The Ambro Family
 Christine and Paul Anderson Family
 Mary Trecek Andres
 Rose and Frank Andres
 John E. Aukofer
 Fr. Patrick Behling
 Bill Berdan
 Bob Berdan
 Viola Berdan
 Fr. Peter Berger
 Alex and Mary Bozmoski
 Tom Braun
 Germaine Brigman
 Elinore and John Brisch
 Grace Burbach Family
 Fredrick Cekosh
 Dave Cherne
 Fred Cherne
 Irene Cherne
 Ken Christensen
 Margaret Christianson
 The Conners Family
 Lora Cronin
 Melinda, Bobby, Brenda Danesa
 Gilbert and Maletta Dechant
 Charlotte and Peter Dhein
 Gerald, Helen and Leonard Driscoll
 Alexia Stilp Dudley
 The Fangmann Family
 Anne Koller Farrell
 Timothy S. Farrell
 Velma Feyen
 Tony Fleming
 William Fleming
 Margaret and Roy Foley
 The Fotsch Family
 Angeline Fugarino
 Joseph Fugarino
 Edward, Arleen, Craig Gaffrey
 Charles S. Geiger
 Lillian and Kenneth Geimer
 Bart, Stephanie and Judy Glowacki
 Tony Goedheer
 Pat Gordon
 The Gornick Family
 Kathleen Graber
 Fred and Virginia Grimm

Rolando B. Gutierrez
 Erwin and Arline Holz
 Paul C. Hoppe
 Jack Hornak
 Donald F. Horning
 Michael and Donna Jakus
 Casimir Janiszewski
 Kathy Janusz
 The Johnston Family
 Biserka, Jaksa, Marko Kalogjera
 Dave, Liliana, Bella, Barry, Ikar and Lili Kalogjera
 Harriet M. Kern
 The Klein Family
 Rosemary and Norbert Kremer
 Marjorie Krizek
 Mary Jane and Ed Kuczynski
 Martin and Mary Kult
 Jean E. LaPierre
 Robert Joseph LaPierre
 Dr. Charles Larkin
 The William Law Family
 John LeDoux
 Sr. Mary Martin Linn
 Virginia and Cyril Lippert
 Frank J. and Lucille Lisiak
 Eilene Lyons
 Jim and Lauretta Lyons
 Marie and Emil May
 Dr. Michael McGinn
 Dr. Carl F. Moyer
 Anthony J. Minotte, Jr.
 Thomas and Dolores Neville
 Ted and Catherine Nord
 Catherine and Harold Organ
 Stephanie Ostruszka
 Florence Panfil
 Jack and Eileen Parcelewicz
 Nancy Parey
 Norman Payleitner
 Colleen Peters
 Noy and Lois Pittman
 Rita and Bernie Pleiss
 James Plestina
 Plestina grandchildren
 Terese Powers
 Howard and Linda Pryor
 Dorothy M. Puchner
 Dr. Thomas C. Puchner
 The Radish Family

Virginia and Werner Raml
 Bonnie Raschig
 Albert Richter
 Bob and Lib Rice
 Dorothy and Al Rieger
 Gordon Rise
 Henry Rueter
 Matthew and Clara Sallmann
 Linda Saje
 Louis and Ida Saje
 Michael and Katherine Scardino
 Bernard Schlaefer
 Blanche, Otto and Bobby Schmideler
 James and Marcella Schmitt
 Karl and Peggy Schmitt
 Michael Schmitt
 Michael and Kathleen Schmitt
 Michael Schroeder
 Mary and Colleen Schwarz
 The Shiely Family
 Petrina and Louis Smetek
 The Kathy Smith Family
 Don and Rita Spaltholz
 Norb and Betty Stefaniak
 James, Martin, Sophie Steidl
 Jacob Stoeckl
 Tom Troglia
 Alison Verhaalen
 Leanne Verhaalen
 Inno Vetrano
 Mae Vetrano
 Edward and Betty Jean Waldron
 Bob and Donna Walek
 Diana Waslicki
 Patricia and Fred Wiebersch
 The Wilford Family
 Nancy and Dick Wild
 Elizabeth and Roger Williams
 John Williams
 Thomas Williams
 Alice Wycklendt
 Josephine Zelek
 The Holy Souls in Purgatory
 Staff and Students at St. Mary's School
 St. Mary's Environment Committee
 Our Nation's Military
 Our Elm Grove Police, Fire, EMTs
 Musica Oramus
 Women's Support Center
 The Unborn

This Christmas season, let us pray for those we love, remember with joy those we have lost, and rejoice in the wondrous birth of Our Savior, Jesus Christ.

ASPHALT
TERRY BUSS, JR.
 Parish Member
 tbj@suburbanasphalt.com
 11251 W. Forest Home Ave. | Franklin, WI 53132
 P 414.425.5353 | F 414.425.6691 | suburbanasphalt.com

TOWN BANK
 N.A.
 AWINTRUST COMMUNITY BANK
800-433-3076
 www.townbank.us

Bluemound Bowl
 (262) 786-6280
 Kids Bumper Bowling Parties
 12935 W. Bluemound Rd.
 www.bluemoundbowl.com

POWERS GOLDSMITH SHOP
 "Fine Quality Jewelry Since 1945"
 • Certified Diamonds • Colored Gemstones
 • Engagement Rings • Wedding Bands
 • Custom Designing • Remounting
 • Appraisal Service • Onsite Goldsmiths
 14545 W. Capitol Dr., Bldg. • 262-373-0614

CENTER FOR WORKING FAMILIES
 c4wf.org
 Representing
 The Working Boys' Center, Quito Ecuador

 More info, Jim Parks: 414-349-5076

Donovan & Jorgenson Inc.
HEATING AND COOLING
 Efficient Furnaces • Air Conditioning
(262) 784-6440
 16935 W. Greenfield

THE ORTHOPEDIC INSTITUTE OF WISCONSIN
 Practice Limited to Orthopedic Surgery, Sports Medicine,
 Joint Replacement, and Trauma
 *CHRISTOPHER J. EVANICH, M.D.,
 *Parishioner
 3077 N. Mayfair Rd., Suite 100
 Wauwatosa, WI 53222
 Christopher J. Evanich M.D.
 FOR ALL APPOINTMENTS CALL: (414) 384-6700 • Fax: (414) 727-1058

GROSS
 Heating & Air Conditioning
 For all your heating & cooling needs.
 3260 N 126th Street - Brookfield
262.783.6000 • www.grossheating.com
 FREE Estimates • 100% Satisfaction Guarantee

BERGHAMMER
 Construction Corporation
 4750 N. 132nd St., Butler, WI 53007-0918
262-790-4750
 www.berghammer.com
 GENERAL CONTRACTING
 CONSTRUCTION MANAGEMENT
 DESIGN BUILD CONSTRUCTION
 Jim Parks - Parish Member

HARDER FUNERAL SERVICE
 Eric C. Harder
 Providing the exceptional service and facilities
 families have come to expect.
 18700 W. Capitol Dr. **781-8350**

ADT-Monitored Home Security
 Get 24-Hour Protection From a Name You Can Trust
 • Burglary • Flood Detection
 • Fire Safety • Carbon Monoxide
 1-855-225-4251

ROMAN ELECTRIC
 Plumbing, Heating & Cooling
 Residential Work
 640 S. 70th St. **414-471-8565**

SUPPORT OUR ADVERTISERS!

Make your Financial Future a Priority
 Call or visit today to schedule your complimentary personal financial review.

Colin Dewey
 Financial Advisor
 10501 W. Research Dr., Ste. 202
 Wauwatosa, WI 53226
 414-778-0509
 colin.dewey@edwardjones.com

www.edwardjones.com
 Member SIPC

Edward Jones
 MAKING SENSE OF INVESTING

Jonathan Klicka DDS
 890 Elm Grove Rd., Elm Grove
 (Located in the Village Court #216)
262-782-6686

MOVING? Overwhelmed? Call Segues.
 The Easier Way to Downsize, Move & Settle In.
 SEGUES (sëg-wäys) Helps Seniors & Boomers Relocate &
 Make Smooth Moves & Easy Transitions to their New Home.
 Downsizing - Moving - Packing - Unpacking Decorating - Utility Changes
 Staging - Cleaning - Estate Sales - Other Personalized Services
 Schedule Your FREE Consultation Today! **262-442-4200**
 Segues Senior Move Specialists www.segues.net

MINUTEMAN PRESS TOSA
 414-257-9500
 email: tosa@minutemanpress.com
 www.tosa.minutemanpress.com
 Call or email for a FREE quote on your print project today!

McCoy Plumbing Inc.
 Complete Plumbing Solutions
 David Strigenz, Owner
262-782-5940
 Lic No #249363

DIFFICULTY HEARING T.V. IN CHURCH OR SOCIALLY?
 Stop Struggling To Understand. Call Now For a FREE Evaluation!
BS WISNIEWSKI HEARING AID CENTERS
 130th and BLUEMOUND • 262-784-0063 | 49th and FOREST HOME • 414-321-2020
 Parishioner Discounts • Board Certified Specialist • www.bswhearing.com

STOIBER ELECTRIC CO., INC.
 Industrial and Commercial Contracting
 (262) 782-2226

WE'RE HIRING
 AD SALES EXECUTIVES
 BE YOURSELF. BRING YOUR PASSION. WORK WITH PURPOSE.
 • Work-Life Balance • Paid Training
 • Full-Time with Benefits • Some Travel
 • Serve Your Community
 Contact us at: careers@4lpi.com | www.4lpi.com/careers

WOMEN'S SUPPORT CENTER
 Giving 100% free services to impoverished women
 ♥ Baby supplies & clothing ♥ Pregnancy tests ♥ Ultrasounds
 ♥ Counseling against abortion ♥ Post-abortion counseling
 ♥ Natural family planning & breast feeding classes.
 Donate today to help these women in need!
 2051 W. Wisconsin Ave. Milwaukee ♥ 414-934-8888 ♥ wsc1212@att.net

AVAILABLE FOR A LIMITED TIME!
ADVERTISE HERE NOW!
 Contact **Jeff Tkachuk** to place an ad today!
 jtkachuk@4LPi.com or **(800) 950-9952 x2513**

SUBURBAN
 SITE SERVICES
 COMMERCIAL & RESIDENTIAL
414-406-8376

aspEN
 ORTHOPEDIC SPECIALISTS
 Orthopedics, Podiatry,
 Spine Care, Physical Therapy, MRI
(262) 395-4141 • www.aspenors.com

Bark n' Scratch
OUTPOST
 MilwaukeePetFood.com
 Shop Online for Free Local
 Same Day Delivery on Order Over \$49
 We think outside the bag!
 5835 W. Bluemound Rd. • Milwaukee, WI
414-444-4110

Weller-Anger & Company, LLC
 Your Elm Grove Insurance Agency since 1984
 Personal • Life • Business Insurance
 930 Elm Grove Rd | 262.789.2500
 Quad Parish Members!



LEGACY CAPITAL PARTNERS, INC.
INVESTMENT COUNSEL

Garrett Brigman, BSME, MBA

"Know what you own"
Individual stock and bond portfolios for 49 years.

414.271.1664

www.legacycapitalpartners.net



Tower Chapel
Dining Facility

Becker Ritter
Funeral Home & Cremation Services

262-782-5330

www.BeckerRitter.com

Brookfield



JEM Electric, Inc.

Residential • Commercial

www.jemelectricwi.com

For All Your Wiring Needs

Emergency Service • Free Estimates

JOHN, Parish Member 262-784-6979



PAVING AND CONCRETE

Parking Lot Maintenance, Inc.

262.691.3964

www.plmpaving.com



PH
ORTHODONTISTS

GOLD+
INVISALIGN
PROVIDER
2021

PHM Orthodontists

Pamela R. Hanson, D.D.S., M.S.

Michael G. Payne, D.D.S., M.S.

Michael B. Melugin, D.D.S., M.S.

Complimentary Initial Exam

www.phmorthodontists.com

20855 Watertown Rd 262-798-1421

15855 W National Ave 262-784-4050

AVAILABLE FOR A LIMITED TIME!

ADVERTISE HERE NOW!

Contact **Jeff Tkachuk** to place an ad today!

jtkachuk@4LPi.com or (800) 950-9952 x2513

Schmidt & Bartelt
Funeral & Cremation Service

"Providing Affordable Services at Your Church or Any One of Our Locations."

10121 W. North Ave. (414) 774-5010



A COMPANY YOU CAN TRUST

414-541-9217

www.genewagnerplumbing.com



FORD LINCOLN
CHEVROLET CHRYSLER
DODGE JEEP

Pentlers

Parish Members Since 1955

414-771-9000 www.uptownautomotive.com



George & Meredith Raab

Don't pay 6% or more in commission when we provide the same full service for 3.95%, saving you THOUSANDS!

262-370-7998 | weliketosellhomesforless@gmail.com

weliketosellhomesforless.com | T3realtyllc.com

ST. MARY THRIFT SHOP

13150 Juneau Boulevard • 262-784-6644

Open: Mon, Tues, Fri 9am-4pm, Thurs 9am-6pm, Sat 9am-1pm

Closed Wednesday & Sunday

Donations of clothing and household items gladly accepted

BUNZEL'S OLD FASHIONED MEAT MARKET

Fresh Custom Cut Choice Meats
Party Trays • Catering

Thank You For Supporting A Family Tradition

9015 W. Burleigh • 873-7960

www.bunzelmeats.com



Landscape
Installation,
Design,
Maintenance
& Irrigation

(262) 392-3444

PROUD VENDOR OF ST. MARY
www.seasonalservices.com



Home Improvements & Repair

Serving Wauwatosa & Surrounding Communities
Carpentry & Painting • Insured

Mark Olson LLC (414) 630-2661



WELCOME TO
DELICIOUS
Culver's

15280 W. Bluemound Rd • Elm Grove

ROGERS

TREE SERVICE & YARD CLEAN UP!

Free Estimates
Fully Insured

262-227-9991

WE'RE HIRING
AD SALES EXECUTIVES

BE YOURSELF. BRING YOUR PASSION. WORK WITH PURPOSE.

• Work-Life Balance • Paid Training

• Full-Time with Benefits

• Some Travel

• Serve Your Community

Contact us at: careers@4lpi.com | www.4lpi.com/careers



Personalized Real Estate Services

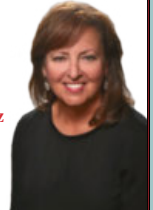
Anne Stefaniak Spalholz

(262) 226-9954

annespalholz@gmail.com

in.a.home

Parish Member 27 Years



SUPPORT OUR ADVERTISERS!



ADT-Monitored Home Security

Get 24-Hour Protection From a Name You Can Trust

- Burglary
- Fire Safety

- Flood Detection
- Carbon Monoxide

1-855-225-4251



One Client. One Trainer. One Goal.™



Brookfield

18000 W Bluemound Rd.

262.289.9860

www.fitnessotogether.com/brookfield

Mike LeDoux, Manager

When It Comes to Water One Call Does It All!

S&K PUMP & PLUMBING, INC.

24 HOUR SERVICE • PHONE: (262) 782-7190

20880 W. Enterprise Ave., Brookfield, WI 53045

snkpump.com • service@snkpump.com

JEROME J. SHIMEK, Attorney at Law
35 Year Parish Member

Family Law Serving Our Community
Estates, Wills, Trusts Probate
and Real Estate, Personal Injury

Estate Planning • 414-588-4280

910 Elm Grove Road • jshimek@att.net



We've Missed You!

Welcome Back to Mass

Stay connected to our faith community no matter where you are
by signing up to get our bulletin delivered straight to your email!

www.ParishesOnline.com



For ad info. call 1-800-950-9952 • www.4lpi.com

St. Mary, Elm Grove, WI

A 4C 01-0135