

JANUARY 2, 2022 • THE EPIPHANY OF THE LORD

# ST. MARY'S VISITATION

Catholic Parish  Elm Grove, WI

## OUR PARISH

### MASSES

#### Sunday Mass Schedule

Saturday Vigil..... 4pm  
Sunday .. 7:30am, 9am, 10:30am, and  
2pm (Latin Mass)

#### Daily Mass Schedule

Monday- Friday ..... 6:30am  
Tuesday and Friday ..... 8am  
(during school year only)  
Saturday ..... 8am

### RECONCILIATION

Wednesdays ..... 7am  
Fridays ..... 2-5pm  
Saturday ..... 8:30am

### HOLY DAYS

Mary Mother of God..... Jan. 1  
Assumption..... Aug. 15  
All Saints ..... Nov. 1  
Immaculate Conception.....Dec. 8  
Christmas .....Dec. 25  
*Mass schedules for Holy Days are  
announced in the bulletin.*

### PARISH ADDRESS

1260 Church Street, Elm Grove, 53122  
Phone: 262-782-4575  
Website: stmaryeg.org

### PARISH OFFICE HOURS

Monday-Thursday ... ..9am-3:30pm  
Friday..... 9am-noon

### SCHOOL ADDRESS

13000 Juneau Blvd. Elm Grove, 53122  
Phone: 262-782-7057  
Website: stmaryeg.org

### ST. MARY'S THRIFT SHOP

262-784-6644  
Mon/Tues/Thurs/Fri..... ..9am-4pm  
Saturdays ..... 9am-1pm



## THE EPIPHANY OF THE LORD

They were overjoyed at seeing the star, and on entering the house they saw the child with Mary his mother. They prostrated themselves and did him homage. Then they opened their treasures and offered him gifts of gold, frankincense, and myrrh. - Mt 2:10-11

Excerpts from the Lectionary for Mass ©2001, 1998, 1970 CCD

©LPI

### MISSION STATEMENT

*We are a community of believers who strive to be faithful and to teach the truth of the Roman Catholic Church. We see beauty in the sacramental life of the Church, especially in the Holy Sacrifice of the Mass and in adoration of Jesus in the Blessed Sacrament. We promote goodness in this world, following the example of our Blessed Mother, our Lady of the Visitation, by serving the needs of others.*

## THE PARISH

1260 Church Street  
Elm Grove, WI 53122

Phone.....262-782-4575  
Thrift Shop .....262-784-6644  
Website.....stmaryeg.org

### STAFF

**Pastor**..... Fr. Peter Berger

**Associate Pastor**... Fr. Patrick Behling  
*pbehling@stmaryeg.org*

**Assisting Priest** ..... Fr. David Filut

**Deacon** ..... Richard Piontek

**Deacon** ..... Dick Niggemann  
*niggemannr@archmil.org*

**Director of Finance** ..... Cheryl Peters  
*cpeters@stmaryeg.org*

**Financial Assistant** ..... Monica Hiller  
*mhiller@stmaryeg.org*

**Human Concerns**..... Mary Sue Protz  
*msprotz@stmaryeg.org*

**Communications**..... Nora Mihm  
*nmihm@stmaryeg.org*

**Administrative Asst**..... Chris Kinzy  
*ckinzy@stmaryeg.org*

**Director of Music**..... Julie Cucunato  
*jcucunato@stmaryeg.org*

**Organist**..... Michel Shestak  
*mshestak@stmaryeg.org*

**Office Manager**..... Liz Steybe  
*lsteybe@stmaryeg.org*

### Catholic Formation

**Director** ..... Josh Dieterich  
*jdieterich@stmaryeg.org*

**Co-Director** ..... Elizabeth Harrison  
*eharrison@stmaryeg.org*

**Cemetery Sexton**.....Mike George  
*mgeorge@stmaryeg.org*

**Thrift Shop**..... Terri Maciejewski  
*tmaciejewski@stmaryeg.org*

**Receptionist**.....Heidi Steigerwald  
*hsteigerwald@stmaryeg.org*

**Receptionist**..... Bernadette Stephens  
*bstephens@stmaryeg.org*

**Trustee**..... Gordon Giampietro

**Trustee**..... James Carrig

## THE SCHOOL

13000 Juneau Blvd.  
Elm Grove, WI 53122

Phone.....262-782-7057  
Website..... stmaryeg.org

**Principal**..... Mary Tretow  
*mtretow@stmaryeg.org*

**Secretary** ..... Kris Dries  
*kdries@stmaryeg.org*

## GOOD GRIEF CLASS BEGINS IN MARCH

Losing a loved one can be one of the most difficult, painful things we experience in our lives. To help people through their grief journey, St. Mary's offers a 12 week "Good Grief" support group led by certified Grief Counselor, Deacon Tom Binder. Previous participants have experienced significant healing and have rediscovered peace, joy, and love in their lives. If you're ready to move forward in your grief journey and smile again, why not join us? You'll be so glad you took this first step.



Good Grief will be held for 12 consecutive weeks on Wednesday mornings, March 9<sup>th</sup> through May 25<sup>th</sup> from 10-11:30am. Class will be held at Becker Ritter Funeral Home, 14075 W North Ave, Brookfield. The class is free of charge. Due to COVID, masks are required.

A 12-week commitment is very important. Class size is limited, and registration is required. For more information, contact Mary Sue Protz, [msprotz@stmaryeg.org](mailto:msprotz@stmaryeg.org) or 262-782-4575.



## VIBE BIBLE STUDY IS BACK

The annual *Visitation Institute Bible Encounter (VIBE)* is back again this January. Please consider joining us as we keep working our way through the New Testament. This year we will be studying the "Catholic Letters" of Sts. Peter, James, and Jude. The classes meet each Thursday morning from 9:30-11:15am beginning on January 6th, and running through February 24th and are taught by Josh Dieterich and Fr. Patrick Behling. The classes will be in the Attic Boardroom or the Senior Center depending on numbers. Come join other parishioners in this exciting opportunity to encounter the Lord in His written Word. For more information and/or to register, contact Josh Dieterich, [jdieterich@stmaryeg.org](mailto:jdieterich@stmaryeg.org).

## OUR 2022 PARISH CALENDARS HAVE ARRIVED

Our 2022 parish calendars, sponsored by Becker Ritter Funeral Home, are available in the Atrium and rear vestibule of church. Please be sure to pick up your complimentary copy.



## AN ANGEL TREE THANK YOU

*Dear Friends at St. Mary's,  
Thank you for the most generous Angel Tree donation. We were able to share your goodness through gift cards for our guests. The many families were so thrilled. We will be able to share again, because of your kindness. We are continually grateful always for the many groceries you provide for our pantry. Words are never adequate to tell you of our appreciation. May your Christmas be filled with peace and happiness and be assured of our prayers throughout 2022!*

*Gratefully,  
Sister Lucina Halbur  
St. Rose of Lima Pantry*

## MASS INTENTIONS

**Monday, January 3, Christmas Weekday**

6:30am † Tom Troglia

**Tuesday, January 4, Saint Elizabeth Ann Seton, Religious**

6:30am † Joanne Ryan

8:00am † Maureen Cafaro

**Wednesday, January 5, Saint John Neumann, Bishop**

6:30am † Antoinette Borkowski

**Thursday, January 6, Christmas Weekday**

6:30am † Margot Soglio

**Friday, January 7, Christmas Weekday**

6:30am † Poor Souls in Purgatory

8:00am † Mary Mellinger

6:30pm Special Intention (Latin Mass)

**Saturday, January 8, Christmas Weekday**

8:00am † Michael McGinn

4:00pm † Petrina Smetek

**Sunday, January 9, The Baptism of the Lord**

7:30am † Mary Therese Wichgers

9:00am Parishioners

10:30am † Donna and Bob Walek

2:00pm The Intention of Suzanne Haskell (Latin Mass)

## READINGS

*Readings for the Week of January 2, 2022*

Sunday: Is 60:1-6/Ps 72:1-2, 7-8, 10-11, 12-13 [cf.11]/Eph 3:2-3a, 5-6/Mt 2:1-12

Monday: 1 Jn 3:22—4:6/Ps 2:7bc-8, 10-12a/Mt 4:12-17, 23-25

Tuesday: 1 Jn 4:7-10/Ps 72:1-2, 3-4, 7-8/Mk 6:34-44

Wednesday: 1 Jn 4:11-18/Ps 72:1-2, 10, 12-13/Mk 6:45-52

Thursday: 1 Jn 4:19—5:4/Ps 72:1-2, 14 and 15bc, 17/Lk 4:14-22a

Friday: 1 Jn 5:5-13/Ps 147:12-13, 14-15, 19-20/Lk 5:12-16

Saturday: 1 Jn 5:14-21/Ps 149:1-2, 3-4, 5 and 6a and 9b/Jn 3:22-30

Next Sunday: Is 42:1-4, 6-7/Ps 29:1-2, 3-4, 3, 9-10 [11b]/Acts 10:34-38/Lk 3:15-16, 21-22 or, Is 40:1-5, 9-11/Ps 104:1b-2, 3-4, 24-25, 27-28, 29-30 [1]/Ti 2:11-14; 3:4-7/Lk 3:15-16, 21-22



In your charity and prayers,  
please remember the souls of those who  
have recently died and their families.

Rosemarie Stack

## FAMILY ROSARY IS AT 4PM

### SUNDAY, JANUARY 9

The Family Rosary, sponsored by St. Mary's Visitation Christian Women, is held the second Sunday of every month at 4pm in Church. Please make plans for you and your family to join us next Sunday, January 9.



## REGISTRATION & SACRAMENTS

### PARISH REGISTRATION

St. Mary's Visitation is always happy to welcome new members! If you are interested in joining the parish, please visit our website. [www.stmaryeg.org/grow-with-us.html](http://www.stmaryeg.org/grow-with-us.html) and complete our registration form. Please contact [nmihm@stmaryeg.org](mailto:nmihm@stmaryeg.org) with any questions.

### BAPTISM PREPARATION

Children ages 6 and under: Those seeking to have children baptized should be registered, active members of St. Mary's Visitation Parish. Parents who request baptism for a child are expected to complete a preparation class. It is offered bi-monthly. The scheduled classes for 2021 include:

Saturday, January 8<sup>th</sup> from 10:30-11:30am in church

Saturday, March 5<sup>th</sup> from 10:30-11:30am in church

It is generally easier if the preparation is done before the birth of the child. If you have attended a session within the last five years, it is not necessary to retake the class. To schedule a baptism, please view the baptism dates on the parish website, [www.stmaryeg.org/baptism](http://www.stmaryeg.org/baptism). Please contact Liz Steybe at 262-782-4485 or [lsteibe@stmaryeg.org](mailto:lsteibe@stmaryeg.org) for more information or to register for the baptism class.

Children ages 6-12: Please contact Josh Dieterich, 262-782-4575 or [jdieterich@stmaryeg.org](mailto:jdieterich@stmaryeg.org).

Adults ages 12 and up: Adults who wish to join the Catholic Church and were not baptized can participate in the Rite of Christian Initiation for Adults (RCIA). Please contact Josh Dieterich, Director of Catholic Formation, 262-782-4575 or [jdieterich@stmaryeg.org](mailto:jdieterich@stmaryeg.org).

### THE SACRAMENT OF MATRIMONY

The Catholic Church takes preparation for the Sacrament of Matrimony very seriously. Generally at least 6 months should be allowed for this preparation. Engaged couples themselves should visit our website, [www.stmaryeg.org/contact-us.html](http://www.stmaryeg.org/contact-us.html) and go to the weddings section to fill out a Marriage Request Form. Contact Liz Steybe for more information, [lsteibe@stmaryeg.org](mailto:lsteibe@stmaryeg.org) or 262-782-4575.

### THE SACRAMENT OF THE SICK

If you know of someone who is in the hospital or is in need of the Sacrament of the Anointing of the Sick, please contact the Parish Office for more information, 262-782-4575.

# PARISH CALENDAR

## Sunday, January 2

7:30am Mass  
9am Mass  
10:30am Mass  
11am-1:15pm YDisciple (V&Rose), Attic  
2pm Latin Mass

## Monday, January 3

6:30am Mass  
9am-4pm Thrift Shop Open

## Tuesday, January 4

6:30am Mass  
8:00am School Mass  
9am-4pm Thrift Shop Open

## Wednesday, January 5

Thrift Shop Closed  
6:30am Mass  
7am Reconciliation  
9am Patriotic Rosary, Church  
4pm Choir Rehearsals, Church  
6:30pm First Reconciliation Rehearsal

## Thursday, January 6

6:30am Mass  
9am-4pm Thrift Shop Open  
9am Adult Formation VIBE Bible Study  
7pm Men's Choir Practice

## Friday, January 7

6:30am Mass  
8:00am School Mass  
8:30am Kiwanis, Senior Center  
9am Holy Dusters  
9am-4pm Thrift Shop Open  
2pm-5pm Reconciliation  
6:30pm First Friday Latin Mass

## Saturday, January 8

7am AA Meeting, Senior Center  
8am Mass  
8:45am Reconciliation  
9am-1pm Thrift Shop Open  
10am First Reconciliation  
10:30am Baptism Class, Atrium  
11:30am Marriage Class, Church  
4pm Mass

## Sunday, January 9

Feed the Hungry Sunday  
7:30am Mass  
9am Mass  
10-11:30am YDisciple (Josh), Attic  
10:30am Mass  
2pm Latin Mass  
4pm Family Rosary, Church  
6:30-8pm YDisciple (Mike), Library



II Margaret Walter and William Mettelman  
I Brooke Voelkel and Charles Kazmer

## WELCOME NEW PARISHIONERS

St. Mary's Visitation welcomes the following individuals and families who have recently joined our parish:

*Melanie Basile*                      *LaDonna Lange*  
*Hilary and Marc Cesarec*      *Iuliia and Leonard Lobo*  
*Thomas Formolo*                  *Carolyn and Donald O'Meara*  
*Renae and Anthony Geier*      *Eleanor and Harold Schroeder*  
*Jessica and Andrew Gossen*   *Jane and Jonathan Stocco*  
*Brittany and Alex King*

## CONGRATULATIONS NEWLY BAPTIZED

The following children were recently baptized at St. Mary's Visitation Parish. We welcome them into our parish community and congratulate their parents:

*Peregrine Gerard Felix Senglaub, son of Elizabeth and Michael*  
*Anastasia Dorothy Lazzari, daughter of Erin and Edmund*  
*Charlotte Rose Laabs, daughter of Angela and Michael*  
*Harvey Loren Horner and Shep Alan Horner, daughter and son of Brittany and Steve*  
*Elizabeth Ann Lanham, daughter of Julie and Barrett*

## WEDDING ANNIVERSARIES

Our parish congratulates the following couples who are celebrating a special Anniversary in January. May you know God's love through your love for one another!

*30 years*              *Kay and Mark Ehlinger*  
*40 years*              *Judith and Carl Pliss*  
*50 years*              *Kathryn and Bernard Westfahl*  
*Nancy and Jerry Fennell*  
*61 years*              *Heidi and Heinz Termuehlen*



## NEXT WEEKEND IS FEED THE HUNGRY

The second Sunday of every month is our Feed the Hungry collection which benefits the food pantries at St. Rose of Lima and Blessed Savior parishes. Please bring non-perishable food items to the atrium or the back vestibule next weekend, January 8-9. Thank you for your generosity!



## ADORATION CHAPEL

**Happy New Year to all!** May God shower you with abundant blessings throughout 2022. This weekend on Saturday we celebrate the Feast of the Solemnity of Mary, the Holy Mother of God. On Sunday, the 2nd, we celebrate the feast of the Epiphany. Consider how far the Magi had to travel to visit Jesus in Bethlehem, and how many sacrifices they had to make to do this. **“Come let us bow down in worship; let us kneel before the Lord who made us. For He is our God and we are the people He shepherds, the flock He guides.”** (Psalm 95:6-7) We have the privilege of having Jesus right here in the Blessed Sacrament 24/7 in the St. Mary’s Perpetual Adoration Chapel. How many sacrifices are **YOU** making to visit Him there? January 3rd is the Feast of the Most Holy Name of Jesus. Call on Him often! On January 4th we remember St. Elizabeth Ann Seton, and on the 5th, St. John Neumann, both advocates for education. Commemorate these feasts in visits to the Adoration Chapel. Pray for the success of our school and religious education programs and for all teachers and administrators who dedicate their lives to the education of children. Begin the New Year right by making a resolution to visit the Chapel often, or better yet, to join the Adoration program!



### *We need coverage:*

- Wednesdays, 4-5pm. Call Joleen Gordon, 262-789-6766.
- Saturdays, 9-10pm. Call Nancy Frazer, 262-786-0617.
- Saturdays, 10-11pm. Call Nancy Frazer, 262-786-0617.

## SCHOOL ENROLLMENT FOR PARISHIONERS

SMV parishioners new to the school can now enroll their children for the 2022-23 school year. Please check our website, [www.stmaryeg.org/learn-with-us.html](http://www.stmaryeg.org/learn-with-us.html) for a link to meet our teachers and take a virtual tour of our school. **All are invited to join us for our Open House on January 30 from 8:30-11:30am.** Contact the school office at 262-782-7057 with any questions.

TOUR OUR SCHOOL | MEET OUR TEACHERS | MEET OUR FAMILIES | EXPERIENCE OUR COMMUNITY

**SM**  
CATHOLIC SCHOOL  
— Elm Grove —

*Offering both a full day and half day K-3 program*  
**NOW ENROLLING**  
Call to schedule a tour today! **262.782.7057**

## SCHOOL CALENDAR

### Tuesday, January 4

School Resumes

8am Mass

### Friday, January 7

8am Mass

### Saturday, January 8

10am First Reconciliation

## SCHOOL NEWS

### ANNUAL SMV AUCTION FOR EDUCATION

The Annual SMV Auction for Education is making a comeback IN PERSON! We hope you will join us on March 26, 2022 to celebrate our theme: Peace, Love & Prayer. Planning is underway, and we need your help to make SMV’s largest fundraiser of the year our most successful to date! We are looking for sponsorships, auction items and monetary donations.



- Do you own a business? Or know someone who does? Do you want to get your name out there as a supporter of St. Mary’s Visitation? Then sponsorship is the opportunity for you!
- Would you like to help us buy great auction items... those extras that we need? We are accepting monetary donations.
- Do you want to donate something special or highly sought after? We need tickets to sporting events, concerts and special events; week or weekend getaways (lake house, cabins, condos; local or otherwise); or that fantastic item or experience we haven’t thought of!
- Are you looking for convenience? On our auction website you can make online donations, sponsorships, or auction item donations. Visit <http://bidpal.net/smv2022>.

- Unsure of what to donate? Check out our charitable Amazon Cart [https://www.amazon.com/hz/wishlist/ls/56NF44JWLH4F?ref\\_=wl\\_share](https://www.amazon.com/hz/wishlist/ls/56NF44JWLH4F?ref_=wl_share) for items we are seeking. These items are helpful to complete auction packages, for use in raffles and for the gift card wall. Items are sent directly to SMV!

Remember, you can donate gift cards through our SCRIP program too (contact [marenkleinmann@gmail.com](mailto:marenkleinmann@gmail.com)). We appreciate your consideration and generosity! Contact Kara Cartledge with any questions, [auction@stmaryeg.org](mailto:auction@stmaryeg.org).

## COURTESY ANNOUNCEMENTS

### RETURN TO LIFE SERIES AT SJV

In addition to their ongoing Single Again divorce support group, St. John Vianney is offering a special six-week series to help people who are dealing with the myriad issues of divorce. *Return to Life* is a six-week divorce recovery series developed by Marianne F. Skrobiak, M.S., M.A., LPC to help normalize the divorce process and offer hope and healing to those going through separation or divorce. It will be open to anyone who needs it, Catholic or not, on Wednesday evenings beginning January 19, from 7pm to 9pm in room P201 in the St. John Vianney Parish Center, 1755 N. Calhoun Road in Brookfield. The cost for the series is only \$10. To register, please contact Maria Schloemer at the SJV Formation & Human Concerns Office at 262-796-3944. Due to the COVID variant, we will require masks. Participants will benefit from the leader's input and sharing with other participants.

### CATHOLIC CHARITIES NEEDS VOLUNTEERS FOR FT. MCCOY

Catholic Charities agencies are mobilizing personnel, volunteers, and resources to provide refugees at Ft. McCoy with a welcoming atmosphere, a break from the confines of temporary housing, and relief from their difficult journey. Among the services provided are on-base legal assistance, social engagement for women and children, and learning centers. The women's centers provide a quiet and clean place for mothers to bond and play with their children and develop friendships. The children's area is a place for children to gather and create arts and craft projects, build puzzles, play games and be sociable. **Volunteers are crucial** to keep the centers running smoothly and safely.

The USCCB and Catholic Charities are seeking more volunteers to aid in this mission. Volunteers will spend time at one of three Women and Children Centers, two Sewing Centers and a Learning Center. Each of the centers requires between 6-10 volunteers to operate. Individuals must be able to commit to a minimum of three days.

For information about volunteer opportunities or donations, contact Andrew Ruesch, Afghan Project Coordinator, Catholic Charities of the Archdiocese of Milwaukee: [aruesch@ccmke.org](mailto:aruesch@ccmke.org) or 414-769-3543.

### HELPING VICTIMS OF RECENT TORNADOES

As you know, tornadoes recently tore through multiple states in the South and Midwest. Please pray for those who have been injured, for those who have lost their lives, and for their grieving families and communities. Catholics and all people of good will may help our brothers and sisters in their recovery by supporting the work of Catholic Charities USA Disaster Relief, which has been engaging as early responders and will remain in recovery support for the long-term. If you have any questions or need additional information on any of these matters, please contact Robert Shelledy, 414-758-2286 or [shelledyr@archmil.org](mailto:shelledyr@archmil.org).

### WE'RE GRATEFUL FOR YOUR GIFTS

The Milwaukee Chapter of the Christ Child Society thanks the many local parishes who contribute gifts of clothes for children and babies, financial support for our programs to help single moms and prayers for our success in the past year. We look forward with joy to 2022! Questions? Visit [www.christchildmilwaukee.org](http://www.christchildmilwaukee.org) or call 414-540-0489.



**WINTER WEEKEND**  
A RESTFUL RETREAT FOR YOUNG ADULTS

Take a weekend to explore the deeper questions of life within a dynamic community of young adults who are going through the same things you are.

ARRIVING AT 6 P.M. **FRIDAY JAN 21, 2022**  
DEPARTING AT 12 P.M. **SUNDAY JAN 23, 2022**

Schoenstatt Retreat Center  
Cherry Lane | Waukesha, WI 53188

SPONSORED BY   ARCHDIOCESE of MILWAUKEE

For more information:  
[brewcitycatholic.com](http://brewcitycatholic.com) Instagram: [@brewcitycatholic](https://www.instagram.com/brewcitycatholic)

**ASPHALT**  
**TERRY BUSS, JR.**  
 Parish Member  
 tbj@suburbanasphalt.com  
 11251 W. Forest Home Ave. | Franklin, WI 53132  
 P 414.425.5353 | F 414.425.6691 | suburbanasphalt.com

**TOWN BANK**  
 N.A.  
 AWINTRUST COMMUNITY BANK  
**800-433-3076**  
 www.townbank.us

**Bluemound Bowl**  
 (262) 786-6280  
 Kids Bumper Bowling Parties  
 12935 W. Bluemound Rd.  
 www.bluemoundbowl.com

**POWERS GOLDSMITH SHOP**  
 "Fine Quality Jewelry Since 1945"  
 • Certified Diamonds • Colored Gemstones  
 • Engagement Rings • Wedding Bands  
 • Custom Designing • Remounting  
 • Appraisal Service • Onsite Goldsmiths  
 14545 W. Capitol Dr., Bldg. • 262-373-0614

**CENTER FOR WORKING FAMILIES**  
 c4wf.org  
 Representing  
**The Working Boys' Center, Quito Ecuador**  
  
 More info, Jim Parks: 414-349-5076

**Donovan & Jorgenson Inc.**  
**HEATING AND COOLING**  
 Efficient Furnaces • Air Conditioning  
**(262) 784-6440**  
 16935 W. Greenfield

**GROSS**  
 Heating & Air Conditioning  
 For all your heating & cooling needs.  
 3260 N 126th Street - Brookfield  
**262.783.6000** • www.grossheating.com  
 FREE Estimates • 100% Satisfaction Guarantee

**THE ORTHOPEDIC INSTITUTE OF WISCONSIN**  
 Practice Limited to Orthopedic Surgery, Sports Medicine,  
 Joint Replacement, and Trauma  
 \*CHRISTOPHER J. EVANICH, M.D.,  
 \*Parishioner  
 3077 N. Mayfair Rd., Suite 100  
 Wauwatosa, WI 53222  
 Christopher J. Evanich M.D.  
 FOR ALL APPOINTMENTS CALL: (414) 384-6700 • Fax: (414) 727-1058

**HARDER FUNERAL SERVICE**  
 Eric C. Harder  
 Providing the exceptional service and facilities  
 families have come to expect.  
 18700 W. Capitol Dr. **781-8350**

**BERGHAMMER**  
 Construction Corporation  
 4750 N. 132nd St., Butler, WI 53007-0918  
**262-790-4750**  
 www.berghammer.com  
 GENERAL CONTRACTING  
 CONSTRUCTION MANAGEMENT  
 DESIGN BUILD CONSTRUCTION  
 Jim Parks - Parish Member

**ROMAN ELECTRIC**  
 Plumbing, Heating & Cooling  
 Residential Work  
**640 S. 70th St. 414-471-8565**

**WE'RE HIRING**  
**AD SALES EXECUTIVES**  
 BE YOURSELF. BRING YOUR PASSION. WORK WITH PURPOSE.  
 • Work-Life Balance • Paid Training  
 • Full-Time with Benefits • Some Travel  
 • Serve Your Community  
 Contact us at: careers@4lpi.com | www.4lpi.com/careers

**STOIBER ELECTRIC CO., INC.**  
 Industrial and Commercial Contracting  
**(262) 782-2226**

**SUBURBAN**  
 SITE SERVICES  
 COMMERCIAL & RESIDENTIAL  
**414-406-8376**

**Women's Support Center**  
 Giving 100% free services to impoverished women  
 ♥ Baby supplies & clothing ♥ Pregnancy tests ♥ Ultrasounds  
 ♥ Counseling against abortion ♥ Post-abortion counseling  
 ♥ Natural family planning & breast feeding classes.  
 Donate today to help these women in need!  
 2051 W. Wisconsin Ave. Milwaukee ♥ 414-934-8888 ♥ wsc1212@att.net

**aspen**  
 ORTHOPEDIC SPECIALISTS  
 Orthopedics, Podiatry,  
 Spine Care, Physical Therapy, MRI  
**(262) 395-4141 • www.aspenors.com**

**Robby A. Amiot, D.P.M.**  
**Ryan J. Kehoe, M.D.**  
**Jonathon O. Printz, M.D.**  
 Same-Day Appointments Available

**Make your Financial Future a Priority**  
 Call or visit today to schedule your complimentary personal financial review.

**Colin Dewey**  
 Financial Advisor  
 10501 W. Research Dr., Ste. 202  
 Wauwatosa, WI 53226  
 414-778-0509  
 colin.dewey@edwardjones.com

www.edwardjones.com  
 Member SIPC

**Edward Jones**  
 MAKING SENSE OF INVESTING

**Jonathan Klicka DDS**  
 890 Elm Grove Rd., Elm Grove  
 (Located in the Village Court #216)  
**262-782-6686**

**MOVING? Overwhelmed? Call Segues.**  
 The Easier Way to Downsize, Move & Settle In.  
 SEGUES (sëg-wäys) Helps Seniors & Boomers Relocate &  
 Make Smooth Moves & Easy Transitions to their New Home.  
 Downsizing - Moving - Packing - Unpacking Decorating - Utility Changes  
 Staging - Cleaning - Estate Sales - Other Personalized Services  
 Schedule Your FREE Consultation Today! **262-442-4200**  
 Segues Senior Move Specialists www.segues.net

**ADT-Monitored Home Security**  
 Get 24-Hour Protection From a Name You Can Trust  
 • Burglary • Flood Detection  
 • Fire Safety • Carbon Monoxide **1-855-225-4251**

**SUPPORT OUR ADVERTISERS!**

**McCoy Plumbing Inc.**  
 Complete Plumbing Solutions  
 David Strigenz, Owner  
**262-782-5940**  
 Lic No #249363

**BS WISNIEWSKI HEARING AID CENTERS**  
 Stop Struggling To Understand. Call Now For A FREE Evaluation!  
 130TH and BLUEMOUND • 262-784-0063 | 49TH and FOREST HOME • 414-321-2020  
 Parishioner Discounts • Board Certified Specialist • www.bswhearing.com

**Minuteman Press Tosa**  
 414-257-9500  
 email: tosa@minutemanpress.com  
 www.tosa.minutemanpress.com  
 Call or email for a FREE quote on your print project today!  
**PRINTING • MAILINGS • POSTERS & BANNERS**  
**PROMOTIONAL PRODUCTS • GRAPHIC DESIGN • FREE DELIVERY**

**AVAILABLE FOR A LIMITED TIME!**  
**ADVERTISE HERE NOW!**  
 Contact **Jeff Tkachuk** to place an ad today!  
**jtkachuk@4LPi.com or (800) 950-9952 x2513**

**Bark n' Scratch OUTPOST**  
 MilwaukeePetFood.com  
 Shop Online for Free Local  
 Same Day Delivery on Order Over \$49  
 We think outside the bag!  
 5835 W. Bluemound Rd. • Milwaukee, WI  
**414-444-4110**

**Weller-Anger & Company, LLC**  
 Your Elm Grove Insurance Agency since 1984  
 Personal • Life • Business Insurance  
 930 Elm Grove Rd | 262.789.2500  
 Quad Parish Members!



LEGACY CAPITAL PARTNERS, INC.  
INVESTMENT COUNSEL

**Garrett Brigman, BSME, MBA**

"Know what you own"  
Individual stock and bond portfolios for 49 years.

414.271.1664

www.legacycapitalpartners.net



Tower Chapel  
Dining Facility

**Becker Ritter**  
Funeral Home & Cremation Services

262-782-5330

www.BeckerRitter.com

Brookfield



**JEM Electric, Inc.**

Residential • Commercial

www.jemelectricwi.com

For All Your Wiring Needs

Emergency Service • Free Estimates

**JOHN**, Parish Member 262-784-6979



PAVING AND CONCRETE

Parking Lot Maintenance, Inc.

262.691.3964

www.plmpaving.com



**PH**  
ORTHODONTISTS



**PHM Orthodontists**

Pamela R. Hanson, D.D.S., M.S.

Michael G. Payne, D.D.S., M.S.

Michael B. Melugin, D.D.S., M.S.

Complimentary Initial Exam

www.phmorthodontists.com

20855 Watertown Rd 262-798-1421

15855 W National Ave 262-784-4050

**AVAILABLE FOR A LIMITED TIME!**

**ADVERTISE HERE NOW!**

Contact **Jeff Tkachuk** to place an ad today!

jtkachuk@4LPi.com or (800) 950-9952 x2513

**Schmidt & Bartelt**  
Funeral & Cremation Service

"Providing Affordable Services at Your Church or Any One of Our Locations."

10121 W. North Ave. (414) 774-5010



A COMPANY YOU CAN TRUST

414-541-9217

www.genewagnerplumbing.com



FORD LINCOLN  
CHEVROLET CHRYSLER  
DODGE JEEP

Pentlers

Parish Members Since 1955

414-771-9000 www.uptownautomotive.com



**George & Meredith Raab**  
Don't pay 6% or more in commission when we provide the same full service for 3.95%, saving you THOUSANDS!

262-370-7998 | weliketosellhomesforless@gmail.com

weliketosellhomesforless.com | T3realtyllc.com

**ST. MARY THRIFT SHOP**

13150 Juneau Boulevard • 262-784-6644

Open: Mon, Tues, Fri 9am-4pm, Thurs 9am-6pm, Sat 9am-1pm

Closed Wednesday & Sunday

Donations of clothing and household items gladly accepted

**BUNZEL'S OLD FASHIONED MEAT MARKET**

Fresh Custom Cut Choice Meats  
Party Trays • Catering

Thank You For Supporting A Family Tradition

9015 W. Burleigh • 873-7960

www.bunzelmeats.com



Landscape  
Installation,  
Design,  
Maintenance  
& Irrigation

(262) 392-3444

PROUD VENDOR OF ST. MARY  
www.seasonalservices.com



**Home Improvements & Repair**

Serving Wauwatosa & Surrounding Communities  
Carpentry & Painting • Insured

Mark Olson LLC (414) 630-2661



WELCOME TO  
**DELICIOUS**  
Culvers

15280 W. Bluemound Rd • Elm Grove

**ROGERS**

TREE SERVICE & YARD CLEAN UP!

Free Estimates  
Fully Insured

262-227-9991

**WE'RE HIRING**  
AD SALES EXECUTIVES

BE YOURSELF. BRING YOUR PASSION. WORK WITH PURPOSE.

- Work-Life Balance
- Full-Time with Benefits
- Serve Your Community
- Paid Training
- Some Travel

Contact us at: careers@4lpi.com | www.4lpi.com/careers



Personalized Real Estate Services

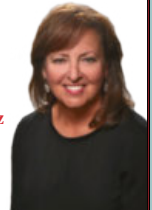
**Anne Stefaniak Spalholz**

(262) 226-9954

annespalholz@gmail.com

in.a.home

Parish Member 27 Years



**SUPPORT OUR ADVERTISERS!**



**ADT-Monitored Home Security**

Get 24-Hour Protection From a Name You Can Trust

- Burglary
- Fire Safety
- Flood Detection
- Carbon Monoxide

1-855-225-4251



**One Client. One Trainer. One Goal.™**



Brookfield

18000 W Bluemound Rd.

262.289.9860

www.fitnessotogether.com/brookfield

Mike LeDoux, Manager

When It Comes to Water One Call Does It All!

**S&K PUMP & PLUMBING, INC.**

24 HOUR SERVICE • PHONE: (262) 782-7190

20880 W. Enterprise Ave., Brookfield, WI 53045

snkpump.com • service@snkpump.com

**JEROME J. SHIMEK, Attorney at Law**  
35 Year Parish Member

Family Law Serving Our Community  
Estates, Wills, Trusts Probate  
and Real Estate, Personal Injury

Estate Planning • 414-588-4280

910 Elm Grove Road • jshimek@att.net



**We've Missed You!**

Welcome Back to Mass

Stay connected to our faith community no matter where you are  
by signing up to get our bulletin delivered straight to your email!

www.ParishesOnline.com



For ad info. call 1-800-950-9952 • www.4lpi.com

St. Mary, Elm Grove, WI

A 4C 01-0135