

JANUARY 23, 2022 • THIRD SUNDAY IN ORDINARY TIME

ST. MARY'S VISITATION

Catholic Parish  Elm Grove, WI

OUR PARISH

MASSES

Sunday Mass Schedule

Saturday Vigil..... 4pm
Sunday .. 7:30am, 9am, 10:30am, and
2pm (Latin Mass)

Daily Mass Schedule

Monday- Friday 6:30am
Tuesday and Friday 8am
(during school year only)
Saturday 8am

RECONCILIATION

Wednesdays 7am
Fridays 2-5pm
Saturday 8:30am

HOLY DAYS

Mary Mother of God..... Jan. 1
Assumption..... Aug. 15
All Saints Nov. 1
Immaculate Conception.....Dec. 8
ChristmasDec. 25
*Mass schedules for Holy Days are
announced in the bulletin.*

PARISH ADDRESS

1260 Church Street, Elm Grove, 53122
Phone: 262-782-4575
Website: stmaryeg.org

PARISH OFFICE HOURS

Monday-Thursday9am-3:30pm
Friday..... 9am-noon

SCHOOL ADDRESS

13000 Juneau Blvd. Elm Grove, 53122
Phone: 262-782-7057
Website: stmaryeg.org

ST. MARY'S THRIFT SHOP

262-784-6644
Mon/Tues/Thurs/Fri..... .9am-4pm
Saturdays. 9am-1pm



3RD SUNDAY IN ORDINARY TIME

*The Spirit of the Lord is upon me...
He has sent me to proclaim liberty to captives
and recovery of sight to the blind,
to let the oppressed go free.
- Lk 4:18*

Excerpts from the Lectionary for Mass ©2001, 1998, 1970 CCD.

©LPI

MISSION STATEMENT

We are a community of believers who strive to be faithful and to teach the truth of the Roman Catholic Church. We see beauty in the sacramental life of the Church, especially in the Holy Sacrifice of the Mass and in adoration of Jesus in the Blessed Sacrament. We promote goodness in this world, following the example of our Blessed Mother, our Lady of the Visitation, by serving the needs of others.

THE PARISH

1260 Church Street
Elm Grove, WI 53122

Phone.....262-782-4575
Thrift Shop262-784-6644
Website.....stmaryeg.org

STAFF

Pastor..... Fr. Peter Berger
Associate Pastor... Fr. Patrick Behling
pbehling@stmaryeg.org
Assisting Priest Fr. David Filut
Deacon Richard Piontek
Deacon Dick Niggemann
niggemannr@archmil.org
Director of Finance Cheryl Peters
cpeters@stmaryeg.org
Financial Assistant Monica Hiller
mhiller@stmaryeg.org
Human Concerns..... Mary Sue Protz
msprotz@stmaryeg.org
Communications..... Nora Mihm
nmihm@stmaryeg.org
Administrative Asst..... Chris Kinzy
ckinzy@stmaryeg.org
Director of Music..... Julie Cucunato
jcucunato@stmaryeg.org
Organist..... Michel Shestak
mshestak@stmaryeg.org
Office Manager..... Liz Steybe
lsteybe@stmaryeg.org
Catholic Formation
Director Josh Dieterich
jdieterich@stmaryeg.org
Co-Director Elizabeth Harrison
eharrison@stmaryeg.org
Cemetery Sexton.....Mike George
mgeorge@stmaryeg.org
Thrift Shop..... Terri Maciejewski
tmaciejewski@stmaryeg.org
Receptionist.....Heidi Steigerwald
hsteigerwald@stmaryeg.org
Receptionist..... Bernadette Stephens
bstephens@stmaryeg.org
Trustee..... Gordon Giampietro
Trustee..... James Carrig

THE SCHOOL

13000 Juneau Blvd.
Elm Grove, WI 53122

Phone.....262-782-7057
Website..... stmaryeg.org

Principal..... Mary Tretow
mtretow@stmaryeg.org
Secretary Kris Dries
kdries@stmaryeg.org

ENVIRONMENT COMMITTEE IS LOOKING FOR VOLUNTEERS

St. Mary's Environment Committee is in need of additional volunteers to help decorate the church prior to our main Liturgical events including Advent, Christmas, Lent, Easter, Pentecost and Ordinary Time. Most of the work is done from 9-11am on a weekday prior to the Liturgical event. No decorating experience is required, we just need people willing to help lift bins, move plants, climb stairs and climb ladders to make our worship space beautiful. Great idea for service hours! If interested, please contact Liz Steybe, lsteybe@stmaryeg.org.

GOOD GRIEF CLASS BEGINS IN MARCH

Losing a loved one can be one of the most difficult, painful things we experience in our lives. To help people through their grief journey, St. Mary's offers a 12 week "Good Grief" support group led by certified Grief Counselor, Deacon Tom Binder. Previous participants have experienced significant healing and have rediscovered peace, joy, and love in their lives. If you're ready to move forward in your grief journey and smile again, why not join us? You'll be so glad you took this first step.



Good Grief will be held for 12 consecutive weeks on Wednesday mornings, March 9th through May 25th from 10-11:30am. Class will be held at Becker Ritter Funeral Home, 14075 W North Ave., Brookfield. The class is free of charge. Due to COVID, masks are required.

A 12-week commitment is very important. Class size is limited, and registration is required. For more information, contact Mary Sue Protz, msprotz@stmaryeg.org or 262-782-4575.



ADORATION CHAPEL

There are so many noteworthy feasts during the coming week! Monday, January 24th is the Feast of St. Francis de Sales, the patron of our Archdiocesan seminary. In your visits to the St. Mary's Perpetual Adoration Chapel, pray for the seminarians, for all priests and deacons and for an increase in vocations to the priesthood. Thank God for those who have answered His call to serve Him and pray that they may continue to serve Him faithfully.

On January 25th we celebrate the Conversion of St. Paul the Apostle. What a blessing that someone who had persecuted Christ became one of His most ardent followers! We should ask ourselves if we are willing to change our ways and become faithful and zealous in serving Him. St. Timothy and St. Titus, whose feasts we commemorate on January 26th were followers of St. Paul. They were recipients of letters from St. Paul, which have become part of the New Testament, and are often read at Mass. January 28th is the Feast of St. Thomas Aquinas, a highly intelligent man who wrote numerous books on Scripture and theology, but claimed that he learned more through prayer than through his writings. Make frequent use of the Chapel and ask Our Lord and all the Saints to help make us true disciples, willing and anxious to follow Him by word and deed.

We need coverage:

- Tuesdays, 1-2 am. Call Nancy Frazer, 262-786-0617.
- Fridays, 8-9pm, Call Mary Schwarz, 262-771-8738.
- Saturdays, 9-10pm. Call Nancy Frazer, 262-786-0617.
- Saturdays, 10-11pm. Call Nancy Frazer, 262-786-0617.

MASS INTENTIONS

Monday, January 24, Saint Francis de Sales, Bishop and Doctor of the Church

6:30am † Jack Hornak

Tuesday, January 25, The Conversion of St. Paul the Apostle

6:30am † Colleen Benson

8:00am † Jack Burns

Wednesday, January 26, Saints Timothy and Titus, Bishops

6:30am † Ed and Beverly Maciejewski

Thursday, January 27, Weekday

6:30am † Poor Souls in Purgatory

Friday, January 28, Saint Thomas Aquinas, Priest and Doctor of the Church

6:30am † Colleen Benson

8:00am † Ray and Norma Deutsch

Saturday, January 29, Weekday

8:00am † Matthew Wernet

4:00pm Parishioners

Sunday, January 30, Fourth Sunday in Ordinary Time

7:30am † Nickoli Revord

9:00am The Intention of Gianna Tripoli

10:30am † Mary Gray

2:00pm † Eleanor Piontek

READINGS

Readings for the Week of January 23, 2022

Sunday: Neh 8:2-4a, 5-6, 8-10/Ps 19:8, 9, 10, 15/1 Cor 12:12-30 or 12:12-14, 27/Lk 1:1-4; 4:14-21

Monday: 2 Sm 5:1-7, 10/Ps 89:20, 21-22, 25-26/Mk 3:22-30

Tuesday: Acts 22:3-16 or Acts 9:1-22/Ps 117: 1bc, 2/Mk 16:15-18

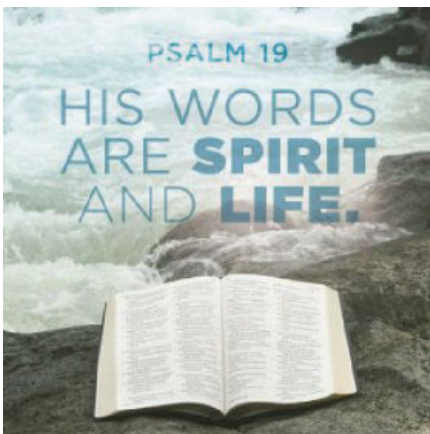
Wednesday: 2 Tm 1:1-8 or Ti 1:1-5/Ps 89:4-5, 27-28, 29-30/Mk 4:1-20

Thursday: 2 Sm 7:18-19, 24-29/Ps 132:1-2, 3-5, 11, 12, 13-14/Mk 4:21-25

Friday: 2 Sm 11:1-4a, 5-10a, 13-17/Ps 51:3-4, 5-6a, 6bcd-7, 10-11/Mk 4:26-34

Saturday: 2 Sm 12:1-7a, 10-17/Ps 51:12-13, 14-15, 16-17/Mk 4:35-41

Next Sunday: Jer 1:4-5, 17-19/Ps 71:1-2, 3-4, 5-6, 15-17 [cf. 15ab]/



REGISTRATION & SACRAMENTS

PARISH REGISTRATION

St. Mary's Visitation is always happy to welcome new members! If you are interested in joining the parish, please visit our website. www.stmaryeg.org/grow-with-us.html and complete our registration form. Please contact nmihm@stmaryeg.org with any questions.

BAPTISM PREPARATION

Children ages 6 and under: Those seeking to have children baptized should be registered, active members of St. Mary's Visitation Parish. Parents who request baptism for a child are expected to complete a preparation class. It is offered bi-monthly. The scheduled classes for 2021 include:

Saturday, March 5th from 10:30-11:30am in church

It is generally easier if the preparation is done before the birth of the child. If you have attended a session within the last five years, it is not necessary to retake the class. To schedule a baptism, please view the baptism dates on the parish website, www.stmaryeg.org/baptism. Please contact Liz Steybe at 262-782-4485 or lsteybe@stmaryeg.org for more information or to register for the baptism class.

Children ages 6-12: Please contact Josh Dieterich, 262-782-4575 or jdieterich@stmaryeg.org.

Adults ages 12 and up: Adults who wish to join the Catholic Church and were not baptized can participate in the Rite of Christian Initiation for Adults (RCIA). Please contact Josh Dieterich, Director of Catholic Formation, 262-782-4575 or jdieterich@stmaryeg.org.

THE SACRAMENT OF MATRIMONY

The Catholic Church takes preparation for the Sacrament of Matrimony very seriously. Generally at least 6 months should be allowed for this preparation. Engaged couples themselves should visit our website, www.stmaryeg.org/contact-us.html and go to the weddings section to fill out a Marriage Request Form. Contact Liz Steybe for more information, lsteybe@stmaryeg.org or 262-782-4575.

THE SACRAMENT OF THE SICK

If you know of someone who is in the hospital or is in need of the Sacrament of the Anointing of the Sick, please contact the Parish Office for more information, 262-782-4575.

PARISH CALENDAR

Sunday, January 23

7:30am Mass
 9am Mass
 10am YDisciple (Josh), Attic
 10:30am Mass
 11:40am YDisciple (V&Rose), Attic
 2pm Latin Mass
 6:30-8pm YDisciple (Mike), Library

Monday, January 24

6:30am Mass
 9am-4pm Thrift Shop Open
 6:30pm Men's Group, Senior Center

Tuesday, January 25

6:30am Mass
 8:00am School Mass
 9am-4pm Thrift Shop Open
 6:30pm RCIA, Attic

Wednesday, January 26

Thrift Shop Closed
 6:30am Mass
 7am Reconciliation
 9am Patriotic Rosary, Church
 4pm Choir Rehearsals, Church
 6:15-7:30pm K5-4th Grade Catholic Formation, School
 6:15-7:45pm 5th-8th Grade Catholic Formation, Attic

Thursday, January 27

6:30am Mass
 9am-4pm Thrift Shop Open
 9am Adult Formation VIBE Bible Study, Sr. Ctr.
 7pm Men's Choir Practice

Friday, January 28

6:30am Mass
 8:00am School Mass
 8:30am Kiwanis, Senior Center
 9am Holy Dusters
 9am-4pm Thrift Shop Open
 2pm-5pm Reconciliation

Saturday, January 29

7am AA Meeting, Senior Center
 8am Mass
 8:45am Reconciliation
 9am-1pm Thrift Shop Open
 4pm Mass

Sunday, January 30

7:30am Mass
 9am Mass
 10:30am Mass
 11:40am YDisciple (V&Rose), Attic
 2pm Latin Mass



In your charity and prayers,
 please remember the souls of those who
 have recently died and their families.

Mary "Joan" Tietjen, Sister of John Just

ST. BEN'S PROGRAM VOLUNTEERS NEEDED

Our parish will again be preparing dinner for the guests at St. Ben's on the first Tuesdays of the even months. The dates are February 2, April 5, June 7, August 2, October 4 and December 6. Please sign-up to volunteer at www.signupgenius.com/go/10c0c44afaf23a5fc1-2022. If you have any questions, please contact Sue Olbrantz, 414-313-6226. Thank you for continuing to support this long-standing parish ministry.



Baby Item Collection

for Women's Care Center
 Milwaukee

January 15-30 in SMV Parish Atrium
 Sponsored by SMV Respect Life Ministry

Please generously support the life-saving mission of Women's Care Center to bring hope to women facing unplanned pregnancies.

Women's Care Center helps pregnant women from our communities choose life for their babies, have healthier pregnancies, become better parents and take first steps to self-sufficiency. With two locations in Milwaukee, Women's Care Center annually serves **over 2,000 women** faced with economic hardship which leads them to abortion. Through WCC's free services, including non-judgmental counseling, state-of-the-art ultrasounds, and parenting education classes, **92% of moms choose life for their baby!**

Women's Care Center has seen an increased need for **emergency baby supplies such as diapers and wipes**. Donations can be made online at supportwomenscarecenter.org/donate, and click on "Wisconsin" and "Milwaukee" to donate in our community. For a complete wish list of items needed, please visit our website, www.stmaryeg.org.

CATHOLIC FORMATION NEWS

WISCONSIN CATHOLIC YOUTH RALLY

Teens in 9th-12th grade and their friends are welcome to join the SMV youth ministry team for prayerful worship, relevant breakouts, joyful community and grace-filled sacraments at the *Wisconsin Catholic Youth Rally on March 19, 2022, 10am to 6pm*. Please save the date on your calendar and plan to attend! Contact eharrison@stmaryeg.org if you have questions or are interested in attending. We register as a group and pay the registration fee with funds raised throughout the year.



SMV PARISH TEEN DISCIPLESHIP

Friends come together to know and serve Christ

Girls Discipleship Group

Rose/Lana/Tricia—11:40-1:15pm, Attic
January 16, 23, 30
February 6, 13, 20
March 6, 13, 20, 27
April 3, 10

Guys Discipleship Groups (pick one)

Mike/Chris—6:30-8pm, Atrium Library
January 9, 23
February 13, 27
March 13, 27
April 10, 24

Josh/Nick/Steve 10-11:30am, Attic

January 9—Types of Prayer

January 23—Moral Decision Making

February 13—Baptism and Confirmation

February 27—Eucharist

March 13—Confession

March 27 — Making New Disciples

April 10 — Getting the Most Out of Holy Week

Contact Elizabeth Harrison, eharrison@stmaryeg.org
if you have any questions.

SCHOOL CALENDAR

Tuesday, January 25

8am Mass

Wednesday, January 26

Spirit Wear Day

Friday, January 28

8am Mass

SCHOOL NEWS



Offering both a full day and half day K-3 program
NOW ENROLLING

Call to schedule a tour today! **262.782.7057**

SCHOOL ENROLLMENT FOR PARISHIONERS

SMV parishioners new to the school can now enroll their children for the 2022-23 school year. Please check our website, www.stmaryeg.org/learn-with-us.html for a link to meet our teachers and take a virtual tour of our school. Contact the school office at 262-782-7057 with any questions.

ANNUAL SMV AUCTION FOR EDUCATION

The Annual Auction for Education will be held March 26th, we hope you can join us! We need your help to make it our most successful to date! We are looking for sponsorships, auction items and monetary donations. Tickets to sporting events, concerts and special events; week or weekend getaways (lake house, cabins, condos; local or otherwise) are always popular items. You can make donations and sponsorships online, visit <http://bidpal.net/smv2022> or drop them off at the school office. We so appreciate your consideration and generosity!



Danielle Mathai & Michelle Akel
Auction Co-Chairs
email us at: auction@stmaryeg.org

CHRISTIAN WOMEN POSTPONES JANUARY 29 SPEAKER BREAKFAST

The Christian Women breakfast scheduled for January 29 has been postponed. Please watch the bulletin for a re-scheduled date, coming soon!

ATTENTION MEN OF ST. MARY'S VISITATION

St Mary's Visitation Catholic men's group has been meeting on Mondays from 6:30pm-8pm in the Senior Center. We are currently presenting the second half of *Symbolon – The Catholic Faith Explained* and we are focusing on Living our Catholic faith. Learn more about your Catholic faith and meet other men in the parish who want to boldly live their faith as God intended. Don't miss it! For information please contact Chris Holland at 414-322-2548.

COURTESY ANNOUNCEMENTS

ARCHDIOCESE OF MILWAUKEE HOSTS PALLIUM LECTURE MARCH 31ST

The Archdiocese of Milwaukee's Pallium Lecture, an annual event to foster conversation and engage the broader culture through the Catholic intellectual tradition will be held March 31 at 7pm at the Brookfield Conference Center. Hosted by Archbishop Jerome E. ListECKI with Keynote Speaker Ryan T. Anderson, President of the Ethics and Public Policy Center, the event is free and open to the public. Visit archmil.org/PalliumLecture to register.

TRUTH BE TOLD: THE GOSPEL OF MARK

Mondays, January 31-March 7, join Firstfruits Women's Center in Elm Grove for their Truth Be Told bible study series, focused on the Gospel of Mark. In the Gospel of Mark, they who have eyes to see can see Jesus is the bread of life, who performs the mighty works of God. During this six-week study, you will clarify your understanding of who Jesus is for us through the "good news" of Mark. Check out the Firstfruits website for more details and to register at www.firstfruits.info/events. If you have any questions, please email Joan Carey, firstfruits.joan@gmail.com.

LOVE AND LIFE GALA FEBRUARY 12TH

Life's Connection invites you to celebrate life with them on Saturday, February 12 at Marriott West/Waukesha for the Annual Love & Life Gala. It's their biggest fundraiser of the year, and includes a Silent and Live Auction, Raffle, Dinner and Special Guest Speaker Fr. Shenan Boquet. Fr. Boquet travels the world spreading the Gospel of Life as President of Human Life International (HLI) headquartered in Virginia. It's a beautiful event for a wonderful cause helping families in our community. To register text [loveandlife to #243-725](tel:243725), call 262-470-3119 or e-mail lifesconnection1@gmail.com.

SUPPORT OUR PARISH

St. Mary's Visitation Parish is grateful for the generous support of our parishioners. We offer many giving options to meet our parishioners needs, as outlined below. Visit www.stmaryeg.org/support-our-parish.html for more information, or contact Cheryl Peters with any questions, cpeters@stmaryeg.org, or 262-782-4575.

ENVELOPES

Parishioners receive packets of envelopes in the mail that are placed in the collection basket at Mass. Includes opportunities for weekly giving as well as Christmas, Easter, Holy Days, special funds, etc. Contact Heidi Steigerwald for changes, hsteigerwald@stmaryeg.org.

ELECTRONIC DONATION OPPORTUNITIES

The methods below provide for automated donations allowing the freedom to give anywhere, anytime, even when traveling — there's no need to worry about a missed collection. If you choose one of these methods and would like to be reminded via email of giving opportunities for Christmas, Easter, Holy Days, special funds, etc. please send an email to donate@stmaryeg.org.

Direct Debit

- Monthly withdrawals directly from a checking or savings account.
- Contact Chris Kinzy to setup or make changes, ckinzy@stmaryeg.org.

PayPal

- You determine how and when donations are processed.
- Setup and make changes yourself on the 'Support Our Parish' page of the St Mary's website.

Credit Card

- Monthly donation processed against your credit card
- Contact Cheryl Peters to setup and or make changes, cpeters@stmaryeg.org.

Venmo

- Donations made as you request or scheduled from Venmo App.
- Download the App and setup donations using [@SMV_EG](https://www.venmo.com/@SMV_EG)

Give Central

- Website or App
- Giving schedule is setup and altered by donor.
- Specials are available as additional, seasonal donations
- Text to give: text the word SUNDAY to 262-393-3447.

ASPHALT
TERRY BUSS, JR.
 Parish Member
 tbj@suburbanasphalt.com
 11251 W. Forest Home Ave. | Franklin, WI 53132
 P 414.425.5353 | F 414.425.6691 | suburbanasphalt.com

TOWN BANK
 N.A.
 AWINTRUST COMMUNITY BANK
800-433-3076
 www.townbank.us

Bluemound Bowl
 (262) 786-6280
 Kids Bumper Bowling Parties
 12935 W. Bluemound Rd.
 www.bluemoundbowl.com

Make your Financial Future a Priority
 Call or visit today to schedule your complimentary personal financial review.


Colin Dewey
 Financial Advisor
 10501 W. Research Dr., Ste. 202
 Wauwatosa, WI 53226
 414-778-0509
 colin.dewey@edwardjones.com

www.edwardjones.com
 Member SIPC

Edward Jones
 MAKING SENSE OF INVESTING

POWERS GOLDSMITH SHOP
 "Fine Quality Jewelry Since 1945"
 • Certified Diamonds • Colored Gemstones
 • Engagement Rings • Wedding Bands
 • Custom Designing • Remounting
 • Appraisal Service • Onsite Goldsmiths
 14545 W. Capitol Dr., Bldg. • 262-373-0614

CENTER FOR WORKING FAMILIES
 c4wf.org
 Representing
 The Working Boys' Center, Quito Ecuador



More info, Jim Parks: 414-349-5076

Jonathan Klicka DDS
 890 Elm Grove Rd., Elm Grove
 (Located in the Village Court #216)
 262-782-6686

Donovan & Jorgenson Inc.
HEATING AND COOLING
 Efficient Furnaces • Air Conditioning
(262) 784-6440
 16935 W. Greenfield

MOVING? Overwhelmed? Call Segues.
 The Easier Way to Downsize, Move & Settle In.

SEGUES (sëg-wäys) Helps Seniors & Boomers Relocate & Make Smooth Moves & Easy Transitions to their New Home.
 Downsizing - Moving - Packing - Unpacking Decorating - Utility Changes
 Staging - Cleaning - Estate Sales - Other Personalized Services
Schedule Your FREE Consultation Today! 262-442-4200

Segues Senior Move Specialists www.segues.net

GROSS
 Heating & Air Conditioning
 For all your heating & cooling needs.

3260 N 126th Street - Brookfield
262.783.6000 • www.grossheating.com
 FREE Estimates • 100% Satisfaction Guarantee

THE ORTHOPEDIC INSTITUTE OF WISCONSIN
 Practice Limited to Orthopedic Surgery, Sports Medicine, Joint Replacement, and Trauma
 *CHRISTOPHER J. EVANICH, M.D.,
 *Parishioner
 3077 N. Mayfair Rd., Suite 100
 Wauwatosa, WI 53222
 Christopher J. Evanich M.D.
 FOR ALL APPOINTMENTS CALL: (414) 384-6700 • Fax: (414) 727-1058

ADT-Monitored Home Security
 Get 24-Hour Protection From a Name You Can Trust

- Burglary
- Flood Detection
- Fire Safety
- Carbon Monoxide

1-855-225-4251

HARDER FUNERAL SERVICE
 Eric C. Harder
 Providing the exceptional service and facilities families have come to expect.
 18700 W. Capitol Dr. **781-8350**

BERGHAMMER
 Construction Corporation
 4750 N. 132nd St., Butler, WI 53007-0918
 262-790-4750
 www.berghammer.com
 GENERAL CONTRACTING
 CONSTRUCTION MANAGEMENT
 DESIGN BUILD CONSTRUCTION
 Jim Parks - Parish Member

SUPPORT OUR ADVERTISERS!

McCoy Plumbing Inc.
 Complete Plumbing Solutions
 David Strigenz, Owner
262-782-5940
 Lic No #249363

ROMAN ELECTRIC
 Plumbing, Heating & Cooling
 Residential Work
 640 S. 70th St. **414-471-8565**

DIFFICULTY HEARING T.V. IN CHURCH OR SOCIALLY?
 Stop Struggling To Understand. Call Now For a FREE Evaluation!
BS WISNIEWSKI HEARING AID CENTERS
 130th and BLUEMOUND • 262-784-0063 | 49th and FOREST HOME • 414-321-2020
 Parishioner Discounts • Board Certified Specialist • www.bswhearing.com

WE'RE HIRING
 AD SALES EXECUTIVES

BE YOURSELF. BRING YOUR PASSION. WORK WITH PURPOSE.

- Work-Life Balance
- Paid Training
- Full-Time with Benefits
- Some Travel
- Serve Your Community

Contact us at: careers@4lpi.com | www.4lpi.com/careers

MP Minuteman Press Tosa
 414-257-9500
 email: tosa@minutemanpress.com
 www.tosa.minutemanpress.com

Call or email for a **FREE** quote on your print project today!

PRINTING • MAILINGS • POSTERS & BANNERS
PROMOTIONAL PRODUCTS • GRAPHIC DESIGN • FREE DELIVERY

STOIBER ELECTRIC CO., INC.
 Industrial and Commercial Contracting
 (262) 782-2226

AVAILABLE FOR A LIMITED TIME!
ADVERTISE HERE NOW!

Contact **Jeff Tkachuk** to place an ad today!
 jtkachuk@4LPi.com or **(800) 950-9952 x2513**

SUBURBAN
 SITE SERVICES
 COMMERCIAL & RESIDENTIAL
414-406-8376

Women's Support Center
 Giving 100% free services to impoverished women
 ♥ Baby supplies & clothing ♥ Pregnancy tests ♥ Ultrasounds
 ♥ Counseling against abortion ♥ Post-abortion counseling
 ♥ Natural family planning & breast feeding classes.
 Donate today to help these women in need!
 2051 W. Wisconsin Ave. Milwaukee ♥ 414-934-8888 ♥ wsc1212@att.net

aspen
 ORTHOPEDIC SPECIALISTS
 Orthopedics, Podiatry,
 Spine Care, Physical Therapy, MRI

(262) 395-4141 • www.aspenors.com

Robby A. Amiot, D.P.M.
Ryan J. Kehoe, M.D.
Jonathon O. Printz, M.D.
 Same-Day Appointments Available

Bark n' Scratch
OUTPOST
 MilwaukeePetFood.com

Shop Online for Free Local
 Same Day Delivery on Order Over \$49
 We think outside the bag!
 5835 W. Bluemound Rd. • Milwaukee, WI
414-444-4110

Weller-Anger & Company, LLC
 Your Elm Grove Insurance Agency since 1984

Quad Parish Members!

Personal • Life • Business Insurance
 930 Elm Grove Rd | 262.789.2500



Garrett Brigman, BSME, MBA

"Know what you own"
Individual stock and bond portfolios for 49 years.

414.271.1664

www.legacycapitalpartners.net



Tower Chapel
Dining Facility

Becker Ritter
Funeral Home & Cremation Services

262-782-5330

www.BeckerRitter.com

Brookfield



JEM Electric, Inc.

Residential • Commercial

www.jemelectricwi.com

For All Your Wiring Needs

Emergency Service • Free Estimates

JOHN, Parish Member 262-784-6979



PAVING AND CONCRETE
Parking Lot Maintenance, Inc.

262.691.3964

www.plmpaving.com



PHM Orthodontists

Pamela R. Hanson, D.D.S., M.S.

Michael G. Payne, D.D.S., M.S.

Michael B. Melugin, D.D.S., M.S.

Complimentary Initial Exam

www.phmorthodontists.com

20855 Watertown Rd 262-798-1421

15855 W National Ave 262-784-4050

AVAILABLE FOR A LIMITED TIME!

ADVERTISE HERE NOW!

Contact **Jeff Tkachuk** to place an ad today!

jtkachuk@4LPi.com or (800) 950-9952 x2513

Schmidt & Bartelt
Funeral & Cremation Service

"Providing Affordable Services at Your Church or Any One of Our Locations."

10121 W. North Ave. (414) 774-5010



A COMPANY YOU CAN TRUST

414-541-9217

www.genewagnerplumbing.com



FORD LINCOLN
CHEVROLET CHRYSLER
DODGE JEEP

Pentlers

Parish Members Since 1955

414-771-9000 www.uptownautomotive.com



**YOUR BROOKFIELD AND
ELM GROVE NEIGHBOR**

& Low Commission Broker 3.95%

George &
Meredith Raab
262.370.7998

See all SE WI
property for sale at:
raabrealtyteam.com



ST. MARY THRIFT SHOP

13150 Juneau Boulevard • 262-784-6644

Open: Mon, Tues, Fri 9am-4pm, Thurs 9am-6pm, Sat 9am-1pm

Closed Wednesday & Sunday

Donations of clothing and

household items gladly accepted

BUNZEL'S OLD FASHIONED MEAT MARKET

Fresh Custom Cut Choice Meats

Party Trays • Catering

Thank You For Supporting A Family Tradition

9015 W. Burleigh • 873-7960

www.bunzelmeats.com



Landscape
Installation,
Design,
Maintenance
& Irrigation

(262) 392-3444

PROUD VENDOR OF ST. MARY
www.seasonalservices.com



Home Improvements & Repair

Serving Wauwatosa & Surrounding Communities
Carpentry & Painting • Insured

Mark Olson LLC (414) 630-2661



WELCOME TO
DELICIOUS
Culver's

15280 W. Bluemound Rd • Elm Grove

ROGERS

TREE SERVICE & YARD CLEAN UP!

Free Estimates
Fully Insured

262-227-9991

WE'RE HIRING

AD SALES EXECUTIVES

BE YOURSELF. BRING YOUR PASSION. WORK WITH PURPOSE.

- Work-Life Balance
- Full-Time with Benefits
- Serve Your Community
- Paid Training
- Some Travel

Contact us at: careers@4lpi.com | www.4lpi.com/careers



Personalized Real Estate Services

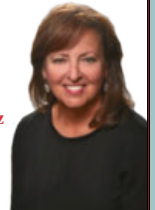
Anne Stefaniak Spalholz

(262) 226-9954

annespalholz@gmail.com

in.a.home

Parish Member 27 Years



SUPPORT OUR ADVERTISERS!



ADT-Monitored Home Security

Get 24-Hour Protection From a Name You Can Trust

- Burglary
- Fire Safety
- Flood Detection
- Carbon Monoxide

1-855-225-4251



One Client. One Trainer. One Goal.™



Brookfield

18000 W Bluemound Rd.

262.289.9860

www.fitnessotogether.com/brookfield

Mike LeDoux, Manager

When It Comes to Water One Call Does It All!

S&K PUMP & PLUMBING, INC.

24 HOUR SERVICE • PHONE: (262) 782-7190

20880 W. Enterprise Ave., Brookfield, WI 53045

snkpump.com • service@snkpump.com

JEROME J. SHIMEK, Attorney at Law
35 Year Parish Member

Family Law Serving Our Community
Estates, Wills, Trusts Probate
and Real Estate, Personal Injury

Estate Planning • 414-588-4280

910 Elm Grove Road • jshimek@att.net



We've Missed You!

Welcome Back to Mass

Stay connected to our faith community no matter where you are
by signing up to get our bulletin delivered straight to your email!

www.ParishesOnline.com



For ad info. call 1-800-950-9952 • www.4lpi.com

St. Mary, Elm Grove, WI

A 4C 01-0135