



# OUR LADY OF PEACE CATHOLIC PARISH

1414 WEST 5TH STREET, MARSHFIELD, WISCONSIN 54449  
715-384-9414 | [OLPMARSHFIELD.COM](http://OLPMARSHFIELD.COM)

## MASS SCHEDULE

Tuesday	5:30 p.m.
Wednesday—Friday	8:00 a.m.
Saturday	4:00 p.m.
Sunday	8:00 a.m. 10:00 a.m.

## CONFESSION SCHEDULE

Saturdays	3:15 p.m. or by appointment
1 <sup>st</sup> & 3 <sup>rd</sup> Fridays	6:00 p.m. at St. John the Baptist

## OFFICE HOURS

Mon—Thu 8:30 a.m. to 4:30 p.m.

## HOMEBOUND COMMUNION

715-384-9414

## PRAYER CHAIN

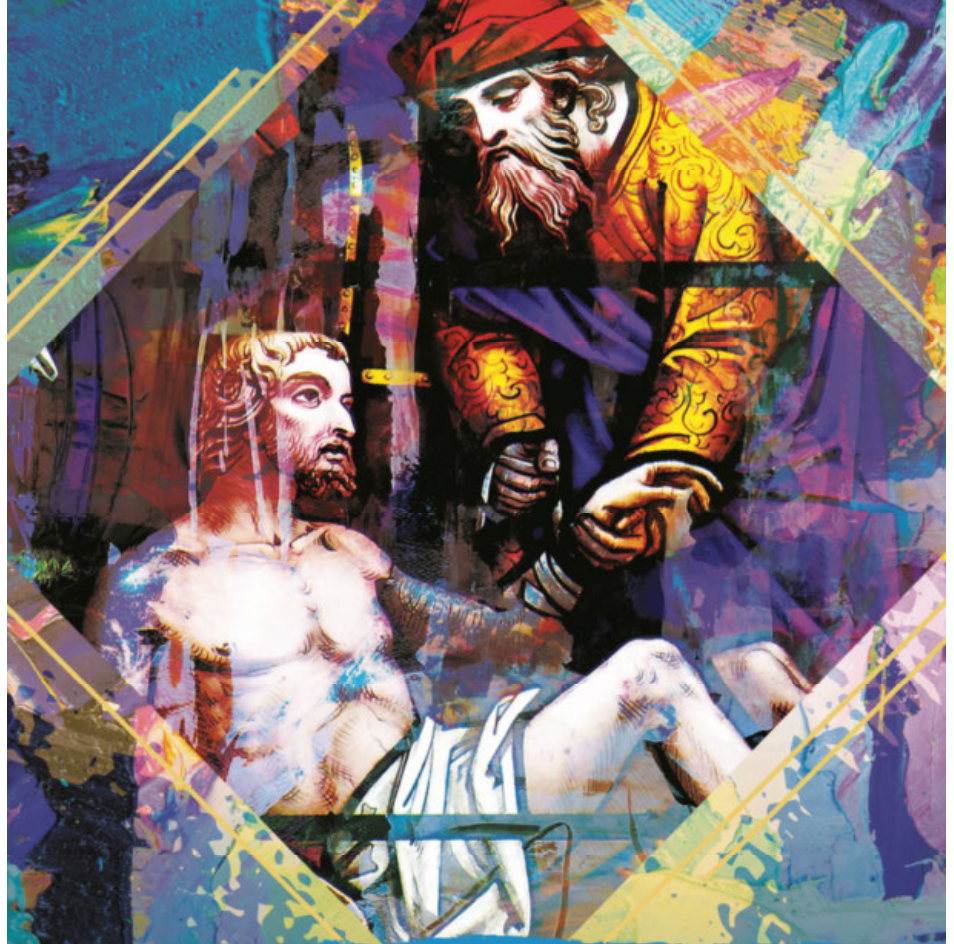
715-207-0477

## EMAIL

[office@olpmarshfield.com](mailto:office@olpmarshfield.com)

## BULLETIN

Submissions:  
[bulletin@olpmarshfield.com](mailto:bulletin@olpmarshfield.com)  
Deadline:  
Tuesdays at 12:00 noon



## 15TH SUNDAY IN ORDINARY TIME

“A Samaritan traveler who came upon him was moved with compassion at the sight.” - Lk 10:33

### SAINT JOHN THE BAPTIST PRIMARY SCHOOL

307 NORTH WALNUT AVENUE  
MARSHFIELD, WISCONSIN 54449  
715-384-4989

### OUR LADY OF PEACE INTERMEDIATE SCHOOL

1300 WEST 5TH STREET  
MARSHFIELD, WISCONSIN 54449  
715-384-5474

### COLUMBUS MIDDLE SCHOOL AND HIGH SCHOOL

710 SOUTH COLUMBUS AVENUE  
MARSHFIELD, WI 54449  
715-387-1177

# LIVE THE LITURGY

INSPIRATION FOR THE WEEK

It's important to keep our eyes open. Otherwise, we can easily dismiss things that truly require our attention. Whether it is someone needing care, a wrong that must be rectified, an injustice that must be addressed, or someone in need of a helping hand, the lens through which we view life (and even the rules by which we live) can prevent us from stopping and acting. Whether it's an obsession with being on time, a compulsion to complete tasks according to a schedule, or a rigidity with not breaking a law or fear of taking a risk, we miss daily opportunities to show mercy. We often fail in our duty to be a good neighbor, especially when it involves brothers and sisters remote from us whom we have never met. The pain of the world is our pain. God's law of love, mercy, and compassion is not something remote. It's already within us and very near. All we have to do is open our eyes and carry it out.

## What is *Lectio Divina*, and how is it associated with the Benedictine Monastic tradition, whose founder, St. Benedict, we honor on July 11?

Benedict desired his monks to live in community, praying the Liturgy of the Hours together, contemplating sacred texts, and doing manual labor. The monks developed a technique to facilitate a spiritual and devotional reading of the Bible known as *Lectio Divina*, the holy reading of a text. This method encourages the reader to hear the biblical text with an open heart and focus on whatever God wants to highlight and then apply it to daily life.

There are variations on *Lectio Divina*, but essentially, the technique consists of a three-step process of reflection. When the reflection is done with a group, the responses are shared by all the participants. Once the text is selected, it is read meditatively, and the following are then explored: choose a word or phrase that attracts you; reflect on how and where the content of this reading touches your life today; ask what you believe that God wants you to do during this coming week (month, year, lifetime).

Thanks to Benedict, the Christian community has been gifted with this special way of entering into the biblical text. This week, use the *Lectio Divina* process on one of the readings for the coming Sunday and make a note of the life connections you are making. How is this reflection on the biblical text drawing you closer to God and others?

### READINGS FOR THE WEEK OF JULY 17, 2022

Sunday: Gn 18:1-10a/Ps 15:2-3, 3-4, 5/Col 1:24-28/  
Lk 10:38-42  
Monday: Mi 6:1-4, 6-8/Ps 50:5-9, 16-17, 21 and 23/  
Mt 12:38-42  
Tuesday: Mi 7:14-15, 18-20/Ps 85:2-4, 5-6, 7-8//Mt 12:46-50  
Wednesday: Jer 1:1, 4-10/Ps 71:1-6ab, 15 and 17/Mt 13:1-9  
Thursday: Jer 2:1-3, 7-8, 12-13/Ps 36:6-11/Mt 13:10-17  
Friday: Sg 3:1-4b or 2 Cor 5:14-17/Ps 63:2-9/  
Jn 20:1-2, 11-18  
Saturday: Jer 7:1-11/Ps 84:3, 4, 5-6a and 8a, 11/Mt 13:24-30  
Next Sunday: Gn 18:20-32/Ps 138:1-8 /Col 2:12-14/Lk 11:1-13



Campaign Goal		\$1,155,000.00
Pledged	59%	\$681,500.00
Under/Over Goal	-41%	-\$473,500.00
Average Pledge		\$4,799.30
Number of Pledges		142

### MASS INTENTIONS FOR THE WEEK

Tuesday July 12th	8:00 AM	† Millie Marty
Wednesday July 13th	8:00 AM	† DuWayne Poppy
Thursday July 14th	8:00 AM	† Arline Stangl
Friday July 15th	8:00 AM	† Philip Ejercito
Saturday July 16th	4:00 PM	† SanDee Bushman
Sunday July 17th	8:00 AM	† Donald Luepke
	10:00 AM	Pro Populo



**Vacation Bible School Monumental** Totally Catholic Vacation Bible School will be July 18-22 from 9:00 to 11:30 a.m. in Dillenburg Hall and is open to all children ages four to 12. Middle school and High school students and adults are encouraged to share their faith by

volunteering. Go to our parish website for more information, to register a child, or to sign up to help.

**Musician Moving** On Our main parish pianist, David Nielsen, has finished his degree and will be leaving us to pursue graduate studies in at this point have not yet found anyone. If you or anyone you know might be interested in this paid position, please call the parish office. We are grateful to David for generously sharing his beautiful musical gifts with us these past years and pray that God will continue to bless him in all his endeavors.

**Holy Communion to the Sick** During the pandemic, Holy Communion to the Sick at the Marshfield Medical Center Hospital was suspended. The Spiritual Care Department is again allowing Holy Communion to be brought to patients in the hospital, but volunteers are needed. If you are interested in helping with this important ministry, call Allyson Mayeaux at 715-305-5453.

**Pulled Pork Parish Picnic** The Parish Action Council is planning a Pulled Pork Picnic after the 4:00 p.m. Mass on Saturday, August 13. At this time we need volunteers who can smoke pork shoulder on their smoker. We also need coordinators to make potato salad and coleslaw. Please contact Jack at [jackfieweger@tds.net](mailto:jackfieweger@tds.net) or 715-652-3053 if you can help.

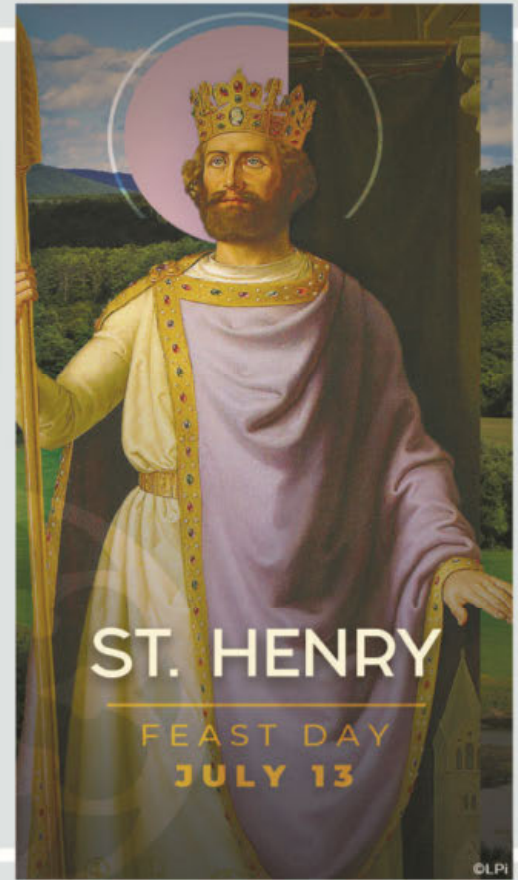
**Seeking Book Club Participants** Have you wanted to read more about some of the interesting women of the Bible? Join Jackie Walker on Wednesdays beginning on July 20th as we meet some of the incredible women in the lineage of Jesus using a series of books by author Francine Rivers. If interested or for more information, email Jackie at [OLP.CRE@gmail.com](mailto:OLP.CRE@gmail.com).

**Dare to Follow Day/Evening of Discernment** Young men ages 12-16 and men age 17 and above are invited to learn more about discerning a call to the priesthood. Several locations are available, including: St. John the Baptist Parish in Edgar on July 14 and Our Lady Queen of Heaven in Wisconsin Rapids on July 19. There is no charge to attend. Lunch or dinner will be provided. Email [rorth@diolc.org](mailto:rorth@diolc.org) or call 608-791-2667 for information or to register



**Hope for Your Marriage** Is your marriage in trouble? No matter how hopeless it seems, forgiveness and trust are possible. Retrouvaille (pronounced "retro vi") helps couples through difficult times in their marriages, some even after separation or divorce. Retrouvaille, which means rediscovery, is confidential and affordable. The next weekend program in Central Wisconsin will be held August 19-21. For more information call 877-922-HOPE (4673) or visit [www.HelpOurMarriage.org](http://www.HelpOurMarriage.org).

**Community Theater** The Pittsville Area Community Theater will be performing Neil Simon's Plaza Suite, a delightfully classic Broadway comedy about love and marriage July 15-17 and July 22-24. Visit [Pittsvilletheater@gmail.com](mailto:Pittsvilletheater@gmail.com) for more information.



## Saint of the Week

Saint Henry was born in 972 to Henry, Duke of Bavaria, Germany, and his wife Gisela of Burgundy. Saint Henry's early life was permeated with Christianity, among those who guided his education was Bishop Wolfgang of Ratisbon, who became a saint himself. In 995, Saint Henry succeeded his father as Duke of Bavaria, and in 1002, upon the death of his cousin, Otho III, he was elected emperor. In 1014, Saint Henry undertook the long journey from Germany to Rome to be crowned Holy Roman Emperor by Pope Benedict XIII.

In 1022 Saint Henry assisted Pope Benedict VIII in holding the Council of Pavia, which promoted clerical celibacy and sought to end simony (the buying and selling of ecclesiastical goods and offices). During his reign, Saint Henry used his wealth and position for the Church. He confirmed Benedict's authority over Rome, was a patron of churches and monasteries, supported the Cluniac Reforms, restored episcopal sees, and founded the Diocese of Bamberg where he built a cathedral. Saint Henry was married to Cunigunde of Luxembourg, to whom he was incredibly devoted. Although disputed by some historians, some stories of the couple's marriage report they took vows of chastity because their union was childless. Saint Henry died in July of 1024 and was canonized in 1146 by Pope Eugene III.

**HOUSE OF HEATING, INC.**  
1602 N. Central Ave.  
Marshfield, WI 54449  
715-384-3163

One of the PREMIER DEALERS  
LENNOX

Let our protection team go to work for you!

**BURNS INSURANCE**  
SECURITY AND PEACE OF MIND

**WEST BEND** 20th Anniversary 2013-2014

Auto • Home • Business • Life  
Health • Annuities • Farm  
burns-insurance.com

Dan & Cindy Burns

**387-0002**

**Rembs**  
Funerals • Cremations • Celebrations

Greg & Tami Jackan & Families  
300 S Oak Ave • Marshfield  
**715-387-1242**  
www.rembsfh.com

**STONEY RIVER**

LIVE. LAUGH. PLAY.  
LUXURY. AFFORDABLE. QUALITY CARE

Assisted Living  
call 715-207-6423  
Memory Care  
call 715-384-7007  
www.stoneyrivermarshfield.com

**REIGEL PLUMBING & HEATING INC**

(715) 387-3411 24 HR EMERGENCY SERVICE

LOCAL • FULL SERVICE • TRUSTED  
PLUMBING & HVAC EXPERTS

REIGELPLUMBING.COM MP # 225089

**THE HEARING HOUSE**  
HEARING AID & SERVICE

"Make your hearing a listening lesson!"

Todd Beyer, ACA, BC-HIS  
601 S. Central Avenue, Ste. 300, Marshfield, WI  
Locations in Wausau, Colby, Neillsville & Stevens Point.  
www.thehearinghouse.com  
Phone: (715) 384-4700

**MERKEL COMPANY INC.**

The highest standard of electrical service

715-384-8717 www.merkelcoinc.com

Choose Catholic Schools!

Columbus Catholic Schools  
715-387-1177  
admissions@columbusdons.org

CCS is a Wisconsin Parental Choice School

To apply, contact eaton.david@columbusdons.org

**BOSCON**  
Collaborate | Construct

Construction Management & General Construction

Educational - Corporate - Workshop - Food - Medical  
www.bosconco.com

**STERNWELTS & SONS**

"Serving your concrete needs"

READY-MIX DIV. BLOCK DIVISION  
715/384-8995 715/384-4870  
11397 Wren Rd./Mild. 400 E. Arnold/Mild.

**BAYMONT**  
BY WYNDHAM

Marshfield | 715-384-5240  
NOW HIRING

Scotty's  
100 S. CHESTNUT  
(715) 384-8118

Pizza & Chicken

VOTED BEST PIZZA IN MARSHFIELD  
13 YEARS IN A ROW!

COMMERCIAL INDUSTRIAL ROOFING SPECIALISTS

**MAURER ROOFING, INC.**

3414 S. Cherry Ave. • P.O. Box 98 • Marshfield  
Phone: 715-387-2570 Fax: 715-384-8976  
www.maurerroofing.com  
email: maurerroofing@tznnet.com

**THE VINTAGE HOUSE**  
~ Wednes-Sat 4:30 - 9:00 ~  
~ Sunday Brunch 9am till Noon \$11  
Over (55): \$8.00  
(Reservations Appreciated)  
10150 US Hwy 10 • Marshfield  
715-676-2772  
Bring in this coupon for 10% Discount!

**FRANE BodyShop**

AUTO BODY SERVICES

(715) 223-6570  
franebodyshop@gmail.com  
www.franebodyshop.com  
N11517 Fairhaven Ave. • Unity

**CHIPS**

Hamburgers

1330 W. Grand Ave. • Wis. Rapids, WI 54495  
1409 S. Central Ave., Marshfield, WI 54449

**Aden TREE CARE!**

Tree Removal • Tree Pruning • Stump Grinding  
(715) 897-1849  
sales@adentreecare.com

**FURNITURE**  
113 W. 9TH ST.  
384-3166

Central Wisconsin's  
Leading Furniture Store  
bigclarencesale.com

**Meyer, Meyer & Associates**

Ameriprise Private Wealth Advisory Practice

715.387.8700  
1204 South Oak Avenue  
P.O. Box 368  
Marshfield, WI 54449

Veteran Owned & Operated

Marshfield Spencer

**Hansen-Schilling**

Because Goodbyes Are Important  
(715) 387-1215  
www.hansenschillingfuneralhome.com

**FIRSTWEBER REALTORS**  
a Berkshire Hathaway affiliate

Jeni Schoenherr, Realtor  
(715) 305-6417  
Schoenherrj@firstweber.com

"The human side of real estate."

**Work Where you Live & Play!**

Immediate Openings for Full-Time Auto Technicians in Marshfield WI!

Benefits • Holiday & Vacation Pay • Ongoing Education  
State of the Art Equipment • Must Supply Your Own Tools

Apply Online @ [schiertirejobs.com](http://schiertirejobs.com)

**GROW YOUR BUSINESS BY PLACING AN AD HERE!**

Contact Michael Wilde to place an ad today!  
mwilde@4LPi.com  
or (800) 950-9952 x2248

**FRANE BodyShop**

AUTO BODY SERVICES

(715) 223-6570  
franebodyshop@gmail.com  
www.franebodyshop.com  
N11517 Fairhaven Ave. • Unity

**CENTRAL BURNER & BOILER, INC.**

Burner & Boiler Sales - Service & Repairs  
Boiler Room & Heating System Equipment  
Pipe Fabrication & Certified Welding  
CHUCK HERMAN  
3219 S. Central Ave., Marshfield  
715/387-3479  
cbbinc@centralburnerandboiler.com

**ecc**  
Quality Eyecare Your Family Can Trust!

Dr. Elizabeth Sanders Optometrist Dr. Charles E. Miller  
Insurance Accepted • www.eyecaremarshfield.com  
Friendly Professional Certified Staff  
387-6397 • 605 East 4th Street, Marshfield

**Webber's Farm Store**  
9706 County Rd H  
Marshfield • 715-384-5639

3/4 mile west of Central on 14th St.  
Hours: Mon-Fri 8:30-7 • Sat 8:30-5

**MCNEELY**  
FINANCIAL SERVICES

Daniel A. Flees, CMFC, FINANCIAL ADVISOR  
702 E. Willow Dr., Spencer, WI 54479  
715-659-4255  
daniel.flees@woodburyfinancial.net

Securities and investment advisory services offered through Woodbury Financial Services, Inc. (WFS), member FINRA/SIPC. WFS is separately owned and other entities and/or marketing names, products or services referenced here are independent of WFS.

**KNIGHTS OF COLUMBUS**

Fr. John Eisen Council 1799

Grand Knight: Scott Frome  
grand.knight1799@gmail.com

Field Agent: Jason Bourget  
jason.bourget@kofc.org

**Melody Gardens**

Restaurant & Skateland  
1200 S. Oak Ave., Marshfield  
715-384-3326

Christian Music Skate Nights  
www.melodygardensmarshfield.com

FAMILY AUTO GROUP

**Wheeler's**  
SINCE 1984

888-351-0053 www.wheelersgm.com  
Abbotsford • Marshfield • Medford • Wisconsin Rapids

**SWETZ OIL**

BULK GASOLINE • DIESEL FUEL & FUEL OIL  
Quality Conoco Motor Oil,  
Hydraulic Oil & Grease  
"Serving Your Area"

652-2380  
County Hwy P • Blenker

**State Farm**

John Neumueller Ins Agency Inc  
John Neumueller, Agent  
507 S Chestnut Ave  
Marshfield, WI 54449  
Bus: 715-675-3324

State Farm, Bloomington, IL  
2001739

**McMillan ELECTRIC**  
715.384.4131

Marshfield, WI • Medford, WI  
www.mcmillanelec.com

**S&S INSURANCE**  
207 W Upham St Marshfield

Auto - Home - Business - Life - Farm  
Investment - Annuities  
387-3477

Paul Helgerson • Jon Schalow  
Jessie Erickson • Laura Debevec Schultze  
Carrie Draeger  
E-mail: [ssinsurancemfld@hotmail.com](mailto:ssinsurancemfld@hotmail.com)

**MITTEN'S**

"WHERE SERVICE IS MORE THAN JUST A WORD"

• Furniture  
• Appliances  
• Electronics

SALES • SERVICE  
VOLUME PRICING  
PERSONAL SERVICE

715-387-8605 • 171 S. CENTRAL AVE. • MARSHFIELD

**PROUDLY CHEESE WISCONSIN**

Ken, Kim, Kelvin Heiman  
10898 Hwy. 10 West • Marshfield, WI 54449  
715/676-2177 • FAX 715/676-3636

**McMillan ELECTRIC**  
715.384.4131

Marshfield, WI • Medford, WI  
www.mcmillanelec.com

**MARSHFIELD MONUMENT**  
Markers-Monuments Mausoleums

Brian Hopperdietzel, Owner  
www.marshfieldmonument.com

435 S. Central Ave. • (715) 384-5575

Place Your Ad Here and Support our Parish!

Instantly create and purchase an ad with

**AD CREATOR STUDIO**

4lpi.com/adcreator

**FirstCall**  
Medical Monitoring

With FIRSTCALL...  
help is available at the push of a button

CLARK ELECTRIC APPLIANCE & SATELLITE INC.  
Call us for more information:  
715-267-6544 or 1-866-279-6544

**CENTURY 21**  
Gold Key Realty, Inc.

**KARA MCMANUS**  
REALTOR®

Cell - 715-304-6176  
Office - 715-387-2121  
c21teamcommunity@gmail.com  
1643 N. Central Avenue  
Marshfield, WI 54449

Each Office Independently Owned and Operated

**Heinzen**  
Printing & Promotional

715.384.4959  
www.heinzenprinting.com

**Central Wisconsin Steam Way**

SERVING CENTRAL WISCONSIN SINCE 1985

The Most Thorough Cleaning Ever - Or It's FREE! Guaranteed

**RON BOHMAN**  
715-387-1229 1-800-236-1113