

March 19, 2023 Fourth Sunday of Lent

Sacred Heart of Jesus

112 East 11th Street • Marshfield, WI 54449

Parish Office 715-384-3213

Mass Times: Tuesday-Friday 8:00am

Weekday Masses are canceled until further notice.

Sunday 8:00am

Holy Days: As scheduled in bulletin

Corpus Christi

10075 Hwy. BB • Marshfield, WI 54449 (location)

112 E. 11th St, Marshfield, WI 54449 (mailing/office)

Parish Office 715-384-3213

Weekend Mass: Saturday 6:00pm

Weekdays/Holy Days: As scheduled in bulletin

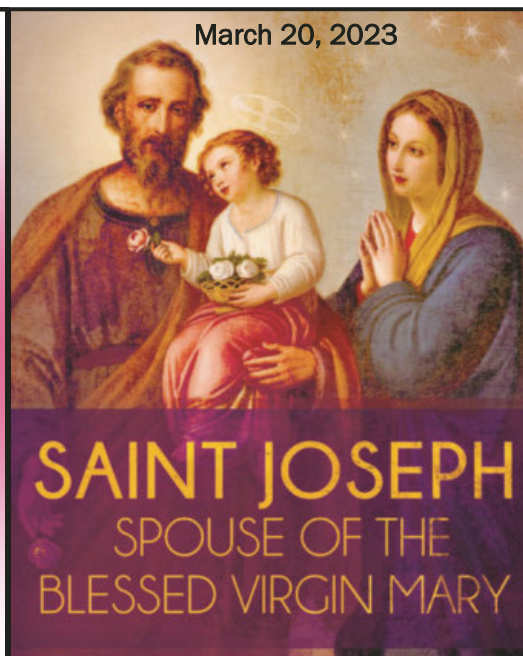


4TH SUNDAY OF LENT

When Jesus heard that they had thrown him out, he found him and said, "Do you believe in the Son of Man?"
- Jn 9:35

PROTECTOR OF THE HOLY CHURCH Having besought the aid of your most holy bride, we turn to you in our distress, blessed Joseph, and confidently invoke your protection too. We beseech you to look kindly on our heritage that Jesus Christ made His own with His blood, and to use your power to help us in our needs, through the love that bound you to the immaculate Virgin, God's Mother, and through the fatherly love you poured out on the Child Jesus. Most careful guardian of the Holy Family, protect the chosen people of Jesus Christ; most loving father, keep us from all stain of error and corruption. Most mighty deliverer, look down on us from the height of heaven; aid us in our battle against the powers of darkness, and defend God's holy Church from the guiles of the enemy and all adversity, as once you snatched the Child Jesus from the jaws of death. Assist us unceasingly, so that, upheld by your example and your help, we may live a holy life, die a holy death, and reach the everlasting happiness of heaven. Amen.

March 20, 2023



SAINT JOSEPH
SPOUSE OF THE
BLESSED VIRGIN MARY

MASS & CONFESSION MODIFIED SCHEDULES

The Mass and Confession schedules have been modified to:

6:00pm Saturday Mass at Corpus Christi

8:00am Sunday Mass at Sacred Heart

CONFESSIONS will be on the third Friday of the month at Sacred Heart at 6:00pm.

If you can not attend one of these Masses, there are other Masses available to attend in the Mfld area. Saturday Masses available to attend include:

4:00pm at Our Lady of Peace in Marshfield

4:30pm at St John the Baptist in Marshfield

5:00pm at St Michael in Hewitt

Sunday Masses available to attend in Marshfield area:

7:00am, 9:00am & 11:00am at St John the Baptist

10:00am at Our Lady of Peace

NO WEEKDAY MASSES AT SACRED HEART There will **NOT** be masses during the weekdays, Tuesday-Friday at Sacred Heart until further notice. If you had a mass intention scheduled on one of these days, Cheryl will be calling you to reschedule it.

MARSHFIELD FAITH FORMATION/CCD religious education program is for students in grades 1-10 in the Marshfield area. The next class will be on March 22nd for grades 6-10 at 6-7:15pm at Our Lady of Peace and Columbus Middle/High School. Call David Alcott with questions at 715-384-3252 ext 6 or email teachdisciples@gmail.com.



RESOURCES TO ACCOMPANY YOUR LENTEN JOURNEY

*Real Life Catholic with Chris Stefanick reallifecatholic.com

*Dynamic Catholic with Matthew Kelly dynamiccatholic.com/lent

*Word on Fire with Bishop Robert Barron

wordonfire.org/calendar/lent

*The Ultimate Guide to Lent with Fr. Mike Schmitz

media.ascensionpress.com/2023



**I am the light of the world, says the Lord;
whoever follows me will have the light of life.**

Parish Staff

Rev. Fr. Keith Kitzhaber 715-384-3213 ext. 102

Email kkitzhaber@hotmail.com

Cell phone number.....715-383-9476

Deacon Raymond Draeger, Permanent Deacon

Phone number.....715-384-3213 ext. 110

Emailraysheart4christ@yahoo.com

Administrative Assistant

Cheryl Stange 715-384-3213 ext. 101

Director of Religious Education

David Alcott..... 715-384-3252 ext. 6

Emailteachdisciples@gmail.com

Contact Information

Parish Office.....715-384-3213 ext 101

HoursMonday-Friday, 8:00am - 4:00pm

E-mail.....sacredheartmarshfield@gmail.com

Websitewww.sacredheartmarshfield.org

Columbus Catholic Schools (CCS).....715-387-1177

FOR YOUR LENTEN JOURNEY The Magnificat Lenten Companion Please take a copy of The Magnificat Lenten Companion home with you. It has a reflection based on the Gospels for each day of Lent to help you to grow to know and love our Lord. You will also find the Stations of the Cross and more.

PRAYER * FASTING * ALMS GIVING

"A LITTLE BIT GOES A LONG WAY" with Deacon Marty Kulak will be presented at St John's on Wednesday, March 22nd at 6:00pm. This talk is entitled, **"A Little Bit Goes a Long Way: Introducing Jesus through the Spiritual Works of Mercy."**

Deacon Marty Kulak will focus on the Spiritual Works of Mercy: forgiving offenses, comforting the afflicted, instructing the ignorant, counseling the doubtful, admonishing sinners, praying for the living and the dead.

MARSHFIELD DEANERY DAY OF CONFESSIONS

will be on Sunday, March 26th from 12:30-5:00pm at Our Lady of Peace. There will be four priests continuously available during this time to hear Confessions. This will be a great opportunity to receive the Sacrament during this Lenten Season!



THE LIVING STATIONS will be presented by Marshfield area high school students on the evening of Wednesday, March 29th at 5:30pm at Our Lady of Peace parish. This is a free event. All are welcome!

Please join us on your Lenten Journey!



WHY DO CATHOLICS GIVE UP SOMETHING FOR LENT? During Lent, we want to make sacrifices by giving up something, such as a type of food like chocolate or dessert, or a habit that we want to quit, such as spending too much time on social media. Or we can make the choice to do something for others. Why do we do this? Lent is about accompanying Jesus into the desert, imitating his example of prayer and fasting. By making such sacrifices of giving up something or doing something for others, we have more room in our heart to refocus our attention on God. We are reminded that this is not our permanent home as we are made to be with our Heavenly Father forever in Heaven.

Sacrament of Penance

Third Friday of the month at 6:00pm at Sacred Heart. Corpus Christi is on Saturdays after the Mass. Communal Penance Services are celebrated during Advent and Lent.

Sacrament of Baptism

Please call the Pastor to register and arrange a date.

Sacrament of Marriage

Please make arrangements with the Pastor at least six months in advance.

Anointing of the Sick/Communion for the Homebound

Contact the Pastor to make arrangements or in case of an emergency. Anyone unable to attend Mass, and who would like to receive Communion at home from our lay staff, please call the Pastor.

New Parishioners

We warmly welcome new members to Sacred Heart and Corpus Christi. To register, please call the Pastor for an appointment.

Bulletin Announcements

Kindly submit, in writing or by e-mail only please, to the parish office by Tuesday 12:00 noon.

Sacred Heart of Jesus



Rest in Peace

ROBERT WILLIAM ADLER - MARCH 8, 2023

SACRED HEART EASTER FLOWER MEMORIALS for loved ones may be sent to the office or placed in the collection basket. Please include the name(s) for whom memorials are to be designated.



CENTRAL CHAMBER CHORALE will perform their spring concert on March 26th at 3:00pm at Christ Lutheran Church, 1208 W 14th St, Mfld. The chorale, under the direction of Dr Richard Brunson, will present a program entitled "An Evening at the Opera." There's sure to be something for everyone, Join Us! This concert is FREE & open to the public.

ATTENTION ENGAGED COUPLES Registration is open for the *Married Love: Two Becoming One* classes in Marshfield. The next available date is April 15th. Please be aware that these classes fill quickly, so register as soon as possible. Couples should first contact their priest and then plan to attend a class at least six months before their wedding. For questions or to register, contact Alanna Hart at 715-650-7310 or hart_alanna@yahoo.com.

MOTHER SON GAME NIGHT will be on Saturday, April 15th at Our Lady of Peace. This is a formal event for sons and their moms (or mother figures). This event includes dinner, games & "Minute to Win-It" challenges. Professional photography by Paul Tishim Photographic Artist will be available for purchase on site. Mass is at 4:00pm with Dinner & Games to follow. This event is FREE, but there will be a free will donation available. To register visit <https://forms.gle/T3jqNoCW5u2cvBmM8> by March 31st. For questions email Nicki at nicki.kitchner@gmail.com

PLEASE RETURN OLD PALMS to the parish office or put in the Church, in the box marked **Palms** by the Adoration Chapel at Sacred Heart. Give to Deacon Ray at Corpus Christi. Please do not throw in the trash as they are blessed.



RECOGNIZE GOD IN YOUR ORDINARY MOMENTS Talking about discipleship and truly being a disciple are two very different things. It is easier to know what we should do than to carry out. Many saints from our tradition have had much to say about this struggle to do what they know they must do, and not do that which they know they shouldn't. It is part of being human. Without God, we have no chance to overcome this predicament. Without God, our actions can ring hollow, or often we are too immobilized to act at all. Without God, we suffer with blindness to the truth of what is important and eternal.

The story in John 9 of Jesus healing the blind man is about more than a physical healing and just one man. It is about how each of us can find healing of our blindness by turning to Jesus Christ. Are you someone that has been saying, "I don't understand all this talk of discipleship and stewardship; what's the big deal?" We all have a blindness that needs to be healed, and the body of Christ needs you so that God's presence in our world can be seen in a more profound manner. The reality is that God heals the blindness of those who seek him so that, in turn, they may be vehicles by which others may see as well. This Lent, you are invited to bring your blindness to Jesus. All the written reflections in the world will not give you new eyes. Those eyes can only be found in Jesus. -Tracy Earl Welliver

Corpus Christi Parish



Sacrament of Penance will be offered at Corpus Christi after the 6:00pm Mass on Saturday nights during Lent.

FIRST MONDAY MEN'S GROUP We meet every first Monday of the month at Corpus Christi at 6:30pm. We have 30 minutes of presentation and discussion. Then, we pray the Rosary during Eucharistic Adoration while Confession is available. Any man is welcome to join us. If you have questions, contact Troy Kroening at troy@gotojoe.com or 715-383-3660.
1st Mondays: April 3rd & May 1st.

EASTER FLOWERS FOR CORPUS CHRISTI

Parishioners who would like to make a donation for Easter flowers in memory of their loved ones, may do so by sending a donation to Mary Burr, 7951 Yellowstone Dr, Hewitt, WI 54441 or place them in the collection basket at church. Write "Easter Flower Donation, Attn: Mary Burr" on the envelope. Please make sure to include the name of your loved one.



THAT MAN IS YOU! Join the Marshfield Deanery's dynamic men's group! We are meeting Tuesday mornings from 6-7am at Our Lady of Peace in Dillenberg Hall. Join us for breakfast, a great presentation, and some discussion. The spring program features a Lenten Mission called "Mysteries of the Rosary", focusing on the Sorrowful Mysteries which is filmed on location in the Holy Land. Join That Man is You! group for a very special Lenten Mission! **All men are invited to join.**

PROJECT SEED SALES A Forage & Seed Corn sale offering high quality, low cost seed in the midst of a challenging economy. Seed corn is offered in both conventional and glyphosate tolerant varieties. There will be alfalfa and clover ready for sale and non-GMO seed can be ordered. Comparable yields make this seed an attractive alternative. Sale date and location: March 25 in Colby & April 1 in Cassel. Details can be found at diolc.org/social-concerns/rural-life/project-seed/

ST ANTHONY SPIRITUALITY CENTER *Discovering a God Rich In Mercy, In a World That Knows No Mercy* will be offered on April 14-16 and presented by Fr Dan Crosby OFM Cap. We'll explore this marvelous gift of mercy that God gives us and demands of us. The cost is \$225. Check-in Friday at 3pm with supper at 6pm and departure on Sunday after the noon meal. For more information contact St Anthony Spirituality Center by email info@sarcenter.com or call 715-443-2236. To register go to www.sarcenter.com.

COLUMBUS CORNER Here is what's new at Columbus Catholic Schools! For more information call 715-387-2444 or visit www.columbuscatholicschools.org.

- *Spring Break will be Mar 20-24. All schools will be closed!
- *Mother Son Game Night will be at OLP on Apr 15, register by Mar 31. Contact nicki.kitchner@gmail.com with questions.
- *The Columbus Catholic Schools Annual Appeal is currently at 88%. This year our goal is \$85,000. You can help by visiting our website to learn the different ways you can [donate](#).
- *Galleon 2023 will be held Fri, Apr 28 at Hotel Marshfield.
- *CCS offers thousands of dollars in scholarships each year. The application process for the 23-24 year started Feb 3 and are due Mar 31. Visit our website to apply.

CORPUS CHRISTI



Mass Intention

Saturday, Mar 25, Fifth Sunday of Lent

6:00 pm † Wesley & Theresa Sydow by Bob & Mary Jane Sydow

With Gratitude for your Support **Corpus Christi** Weekly Collection Report for Mar 12

Envelopes needed weekly.....	\$1,453.45
Envelopes received Mar 12.....	\$912.00
Envelope budget (Fiscal YTD).....	\$53,777.65
Envelopes received (YTD).....	\$46,322.00
Offertory.....	\$120.00

Corpus Christi Mission Statement

The mission of this parish is to build a community of believers, the people of God, who by their Roman Catholic belief seek to provide an environment that demonstrates love of God and love of fellow human beings. We strive to nourish this community by our openness to the teachings of Jesus Christ and the prompting of the Holy Spirit, as well as our regular participation in the Eucharistic Celebration.



Upcoming Events

ST PATRICK'S FESTIVAL on Sun, Mar 19 at St Joachim's in Pittsville serving 11am-2pm. Spaghetti, garlic bread & beverage. Bingo and Basket Raffles also. Please join us!

CHRISTIAN MUSIC SKATE NIGHT at Melody Gardens Skateland from 6:30-9:00pm on Friday, Mar 24.

SHRIMP & BEER-BATTERED FISH FRY Carry Outs Only on Mar 24 from 3:30-7pm at St Mary's in Auburndale. Call St Mary's at 715-652-2747 to place an order after 1pm Friday. Menu includes: beer-battered or baked fish, shrimp, potato salad, french fries or baked potato, bread, cheese & coleslaw. Homemade deserts available for \$2.

GRILLED PORK CHOP DINNER at St Michael's in Junction City on Sun, Mar 26 serving from 10:30am-1pm DRIVE-THRU. Meal includes: 2 seasoned & grilled pork chops, baked potato, green bean casserole, garden salad, bread & dessert.

FISH BOIL & FISH FRY at Colby Lions Shelter on Fri, Mar 31 serving from 4:30-7pm. Boiled or deep fried fish & fish tacos with French fries, coleslaw breads & desserts. 1 pcs-\$8, 2 pcs-\$10, 3 pcs-\$11, 4 pcs-\$12. Beer, wine & soda avail.

TOWN OF LINCOLN FIRE DEPARTMENT BREAKFAST will be Sun, Apr 16 at RiverEdge Golf Course. Serving from 8-11:30am.

SACRED HEART OF JESUS



Mass Intentions for the Week

Sunday, Mar 19, Fourth Sunday of Lent

8:00 am † Ray Newmier by Jim & Cookie Theurer and
† John & Florence Smrecek by Family

Monday, Mar 20, St Joseph, spouse of the BVM

7:00 am Deanery Mass at St John the Baptist Church

Tuesday, Mar 21 through Friday, Mar 24

8:00 am **NO MASS**

Saturday, Mar 25, The Annunciation of the Lord

5:00pm **NO MASS**

Sunday, Mar 26, Fifth Sunday of Lent

8:00 am † Blanche Schuld by Mary Jo Przybylski and
† Alvin Wellner by Carol & Greg Schulte

Liturgical Roles for Mar 26

Lector & Ministers

8:00am Theresa Wojahn, Nancy Brost, Deacon Ray

Servers

8:00am James, David & Stephen Thill

Draeger

With Gratitude for your Support **Sacred Heart** Weekly Collection Report for Mar 12

Envelopes needed weekly.....	\$5,144.25
Envelopes received Mar 12.....	\$3,205.00
Envelope budget (Fiscal YTD).....	\$190,337.25
Envelopes received (YTD).....	\$177,778.90
Offertory.....	\$209.00
Capital Improvements.....	\$125.00
Future Family Life Program.....	\$105.00
Easter, Initial Offering.....	\$105.00

Sacred Heart Mission Statement

We, the members of Sacred Heart Parish, call upon the Holy Spirit for vision to renew the plan God has given us in our faith community. We develop Sacred Worship as one will exhibit living faith, prayer and service to others in Christ. Developing a Family Life Program, we offer spiritual and personal growth by working together with people of all ages and races. Social Justice reaches out to those who are in need. We commit ourselves to continue the mission of Jesus Christ.

HELP FOR THE HOMELESS HYGIENE DRIVE The Society of St Vincent De Paul of Marshfield would like to thank all the parishioners for their generous donations during the recent hygiene drive. These donations will go to our friends and neighbors in need in Marshfield and surrounding communities. Again, thank you for your generous donations. If you or someone you know find yourselves in need, please contact the St Vincent De Paul Outreach by telephone 715-387-0395, or email SVDPMFLDoutreach@outlook.com

This Lenten season, try to focus on the deeper meaning of all your sacrifices. Let your sacrifices be less about saying "No" to something and more about saying "Yes" to Someone - Jesus. "And whatever you do, in word or in deed, do everything in the name of the Lord Jesus, giving thanks to God the Father through him." Colossians 3:17

Support
Our
Advertiser!

Thank you for
advertising!



John Neumueller Ins Agency Inc
John Neumueller
CLU, ChFC, CASL, LUTCF, CPCU, Agent
Offices in Wausau & Marshfield
www.insurancewausauwi.com
Bus: 715-675-3324

State Farm, Bloomington, IL
2001739

CHALICE OF MERCY Emergency Aid for Ukraine www.chaliceofmercy.org

Dear Friends,

With this letter I would like to express my deepest gratitude to you for your prayers and financial support you offered for Chalice of Mercy this last year!

The last year has been the most difficult I have ever lived in my life. On February 23, 2022 I was preparing the schedule for the entire year of missions for Chalice of Mercy. Our plan was finally restart organizing medical missions and pilgrimages for the doctors, but everything changed in an instance when Russian military invaded on February 24. Our capital city Kyiv was supposed to be taken in three days, and bombarding already started falling heavily on big apartment buildings, where simple civil people lived. Many people died that very day. People began to flee and the horror of chaos began to happen. More than 10 million people tried to cross the borders of Poland and other neighboring countries. Mostly women with children and elderly while our brave men went to defend our country. With the deepest pain and at the same time with the greatest hope our mission of Chalice of Mercy from day two began to organize logistics and collections of Emergency Aid to the suffering people of Ukraine.

By the providence of God, we have shipped medical supplies, food and clothing totaling more than \$25 million since March 2022. Our mission covers a very large territory delivering medical/surgery supplies to both Civilian and Military Hospitals, including deliveries directly to the trenches and small medical groups saving lives of both civilians and military personnel. We cover the area from the cities of Kherson to Odessa, the areas where there are real active zones of WAR, and all of the front-line cities and villages. We have established a distribution center in Zaporizhzhya where we receive and distribute the emergency aid directly to the medical teams and volunteers. The volunteers then travel to the many villages that were left in horrific condition after the withdrawal of the Russian soldiers. Suffering of women with small children or bedridden people is impossible to describe. Many people are in dire need and our help is incredibly important and must be immediate.

So many families are completely broken. Many children are left without parents, and parents without children, because they were killed. Ukraine is living with only 30% of its electric supply functioning. Kiev, the capital of Ukraine, has already suffered for more than 50 hours straight without electricity or water. Since it is now winter, this is excruciating due to the cold.

Since the full invasion of Russia, all the horrors of World War II have been repeated over and over again. Our freedom, our culture, and even our language is once again being violated. We are defending our land for our future generations. It is very important to understand that the war in Ukraine did not start all of a sudden ten months ago. Although February 23, 2022 marked the start of the full invasion. More than nine years ago Russia had invaded the Donbas region and then annexed Crimea. In fact, the oppression of Ukraine has a long history, beginning with the genocide committed by Lenin and Stalin, who tried to destroy Ukraine as a nation, because they knew that the Ukrainian people would stand strong against Russian dictatorship and never give up the identity. Finally, Ukraine was free from the Soviet Union in 1991, but it was not a true freedom, we have been tied with a silk thread to the red dragon tail still, but I believe that what is happening now will finally break that thread.

Thank you again for opening your heart for care and support of Ukraine and her suffering people.

Thank you for lifting us up in prayers! Together we will see great things!

May God bless you and your family with His peace! May peace be in every country!

Glory to God! Valentyna Pavshukova Founder of Chalice of Mercy N13740 Fairview Rd, Fairchild, WI 54741

715-828-9070 or 612-751-3749

PLEASE KEEP THE PEOPLE OF UKRAINE IN YOUR PRAYERS!

Monetary donations can be made through Chalice of Mercy.

Visit www.chaliceofmercy.org/donation to see how you can contribute. **Pray the Rosary.**

Heavenly Angels, shield your children from danger.



IN SOLIDARITY WITH UKRAINE will air on ABC affiliates across the United States through a partnership with the Interfaith Broadcasting Commission. Russia's invasion of Ukraine on February 24th, 2022, was a shock to the world. Through this war we are witnessing the reality of evil. But we're also seeing something else. As tanks tore through Ukraine to kill, concerned citizens and Brother Knights arrived with relief supplies to sustain life. As refugees fled, volunteers stood at the border to provide critical care and housing. As bombs dropped from the sky, people of faith sent their prayers to the heavens. In *Solidarity with Ukraine*, an inspiring new film from the Knights of Columbus, see a vivid example of what it means to be a Christian disciple in the midst of war, and how the light of the Gospel continues to shine in the darkness.

BROADCAST SCHEDULE:

WKOW in Madison on 4/2/23 at 11:30am

WAOW in Wausau-Rhineland on 4/2/23 at 12:00am

WXOW & WQOW in La Crosse-Eau Claire on 4/16/23 at 1:00pm





Greg & Tami Jackan & Families
300 S Oak Ave • Marshfield
715-387-1242
www.rembsfh.com



ASSISTED LIVING
305 S. Chestnut Ave. • Marshfield, WI 54449
715-384-6611
www.asterassistedliving.com

**AMAZING NEW
CHEF & MENU**
**TRY OUR FABULOUS
SUNDAY BRUNCH
FROM 6AM-1PM**

820 S CENTRAL AVE
MARSHFIELD, WI 54449
715-384-3705

24/7 Emergency Support
715-384-3163
House Of Heating, Inc.
Heating, Cooling & Fireplaces - Since 1962
HouseOfHeating.com
LENNOX HEAT & GLO

Weber's Farm Store
9706 County Rd H
Marshfield
715-384-5639
3/4 mile west of Central on 14th St.
Hours: Mon-Fri 8:30-7 • Sat 8:30-5

Quality Eyecare
Your Family Can Trust!
Dr. Elizabeth Sanders Optometrist Dr. Charles E. Miller
Insurance Accepted • www.eyecaremarshfield.com
Friendly Professional Certified Staff
387-6397 • 605 East 4th Street, Marshfield

SHORT STAFFED?
Place an ad here to find new
local talent for your business.



CALL 800-950-9952

Hours: Mon. - Fri. 7 am - 5 pm; Sat. 7 am - 12 Noon
STRATFORD BUILDING SUPPLY
Stratford, WI
Ph: 687-4125 • 1-800-261-4125
On the web at: www.stratfordbuilding.com

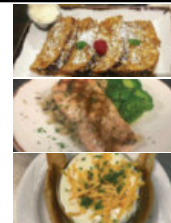
~ 100% Pure Beef & Charcolled ~
CHOPS HAMBURGERS
OPEN DAILY AT: 10:30
Marshfield WI Rapids
(715) 384-7600 (715) 423-8820
ChipsHamburgers.com

Wheeler's
FAMILY AUTO GROUP
SINCE 1964
CHEVROLET GMC
888-351-0053 www.wheelersgm.com
Abbotsford • Marshfield • Medford • Wisconsin Rapids

Veteran Owned & Operated
Marshfield Spencer
Hansen-Schilling
Funeral Home & Crematory Service
Because Goodbyes Are Important
(715) 387-1215
www.hansenschillingfuneralhome.com



THE RIVERS
a taste of MARSHFIELD
NOW OPEN FOR SUNDAY BRUNCH UNTIL 1PM
Bring this ad in for 20% off (Good anytime)
820 S. Central Avenue



FIRSTWEBER
REALTORS®
a Berkshire Hathaway affiliate
Jeni Schoenherr, Realtor
(715) 305-6417
Schoenherrj@firstweber.com
"The human side of real estate."

MITTEN'S
"WHERE SERVICE IS MORE THAN JUST A WORD"
Furniture
Appliances
Electronics
SALES • SERVICE
VOLUME PRICING • PERSONAL SERVICE
715-387-8605
171 S. CENTRAL AVE. MARSHFIELD

AFTER ALL INC.
ARPIN, WI (715) 569-3868
- Agricultural Waste Handling
- Septic & Holding Tank Pumping
- Portable Toilet Rentals
- Snow Removal / Salt & Sand Services
AfterAllInc.Homestead.com

Let our protection Team go to work for you!
BURNS INSURANCE
Auto • Home • Business • Life
Health • Annuities • Farm
burns-insurance.com
387-0002
Dan & Cindy Burns

CENTRAL CULVERT & SUPPLY LLC
Edgar, WI
Karl Kurtzweil - 715.551.3749
www.centralculvert.com

CENTURY 21
Gold Key Realty, Inc.
KARA MC MANUS
REALTOR®
Cell - 715-304-6176
Office - 715-387-2121
c21teamcommunity@gmail.com
1643 N. Central Avenue
Marshfield, WI 54449
Each Office Independently Owned and Operated

With FIRSTCALL®...
help is available at the push of a button.
**CLARK ELECTRIC APPLIANCE
& SATELLITE INC.**
Call us for more information:
715-267-6544 or 1-866-279-6544

KNIGHTS OF COLUMBUS
Fr. John Eisen
Council 1799
Grand Knight: Bob Seitz
grand.knight1799@gmail.com
Field Agent: Jason Bourget
jason.bourget@kofo.org

Concrete Construction • Carpentry • Excavation • Metal Buildings
NIKOLAI CONSTRUCTION
GENERAL CONTRACTORS
8867 E. 29th St. • Marshfield, WI 54449
Office: 715-384-8275 • Fax: 715-384-8332

Gaffney Plumbing, Inc.
• Kohler Showroom
• Mon-Fri 8am-5pm
• New Work, Remodel & Repair
• Commercial
851 S. Central Ave., Marshfield, WI 54449
(715) 384-4606

WE ARE OPEN
Essential Services • Parish Member
Hub City Overhead Door LLC
800-482-3667
WWW.HUBCITYDOOR.COM

BAYMONT
BY WYNDHAM
Marshfield | 715-384-5240
NOW HIRING

DAVE'S EXPERT AUTO SERVICE
500 South Vine
Marshfield, WI 54449
ASE Certified Master Technician
Dave Lang - Owner
715-384-2545

DON'S Automotive
COMPLETE CAR CARE CENTER
Rob Schnitzler
715-384-4333
200 E. 4th St., Marshfield

Sternweis & Sons
"Serving your concrete needs"
READY-MIX DIV. BLOCK DIVISION
715/384-8995* 715/384-4870
11397 Wren Rd./Mfld. 400 E. Arnold/Mfld.

WE APPRECIATE OUR ADVERTISERS!

STONEY RIVER
LIVE. LAUGH. PLAY.
LUXURY.AFFORDABLE. QUALITY CARE
Assisted Living
call 715-207-6423
Memory Care
call 715-384-7007
www.stoneyrivermarshfield.com

State Farm
John Neumueller Ins Agency Inc
John Neumueller, Agent
507 S Chestnut Ave
Marshfield, WI 54449
Bus: 715-675-3324
State Farm, Bloomington, IL
2001739

LET'S GROW YOUR BUSINESS
Place Your Ad Here and Support Our Parish!
CONTACT ME Kristee Flynn
kflynn@4LPi.com • (800) 950-9952 x2251

WE APPRECIATE OUR ADVERTISERS!

Open Mon.-Fri. 8-5 Established 1955
SHAW'S WRECKING YARD LLC
Buying Iron, Metals & Vehicles 9193 Mill Creek Drive
Roll-off Boxes Available Marshfield, WI 54449
(715) 876-3821 shaws wrecking yard llc.com

REAL MUSIC
ENTERTAINMENT • PHOTO BOOTHS
RENTALS & MORE
BOB HALLE • (715) 305-8838
WWW.GONNAGETREAL.COM

REIGEL PLUMBING & HEATING INC
(715) 387-3411 24 HR EMERGENCY SERVICE
LOCAL • FULL SERVICE • TRUSTED
PLUMBING & HVAC EXPERTS
REIGELPLUMBING.COM MP # 225089

FURNITURE
113 W. 9TH ST.
384-3166
**Central Wisconsin's
Leading Furniture Store**

FINANCIAL CLARITY
by Design
Daniel A. Flees, CMFC
FINANCIAL ADVISOR
702 E. Willow Dr., Spencer, WI 54479
715-659-4255
daniel.flees@woodburyfinancial.net
Securities and investment advisory services offered through Woodbury Financial Services, Inc. (WFS), member FINRA/SIPC. WFS is separately owned and other entities and/or marketing names, products or services referenced here are independent of WFS.

9951 DAY ROAD MARSHFIELD
Auburn Field
CANINE SERVICES
Dog Trainer
Dog Boarding
Dog Day Care Center
(715) 313-4236
- Parish Member -
https://www.facebook.com/auburnfieldcanineservices/about/

REAL MUSIC
ENTERTAINMENT • PHOTO BOOTHS
RENTALS & MORE
BOB HALLE • (715) 305-8838
WWW.GONNAGETREAL.COM

REIGEL PLUMBING & HEATING INC
(715) 387-3411 24 HR EMERGENCY SERVICE
LOCAL • FULL SERVICE • TRUSTED
PLUMBING & HVAC EXPERTS
REIGELPLUMBING.COM MP # 225089

MARSHFIELD MONUMENT
Markers-Monuments Mausoleums
Brian Hopperdietzel, Owner
www.marshfieldmonument.com
435 S. Central Ave. • (715) 384-5575



For ad info. call 1-800-950-9952 • www.4lpi.com

Sacred Heart Corpus Christi, Marshfield, WI

A 4C 01-0204