

# EPIPHANY



CATHOLIC

CHURCH

Epiphany Sunday

January 2, 2022

*Vision Statement: "To offer every person in our community a life-changing encounter with Jesus."*

**Epiphany Parish Operating Funds**

Fiscal Year: July 1, 2020 - June 30, 2021

**Epiphany School Operating Funds**

Fiscal Year: July 1, 2020 - June 30, 2021

**Ordinary Income**

Sunday Collections	\$ 1,275,510
Holy Days	7,831
Christmas Collection	27,950
Other Collections	20,247
Investment Income	2,940
<b>Total Ordinary Income</b>	<b>\$ 1,334,478</b>

**Extraordinary Income**

PPP funds	\$ 45,432
Memorials	13,505
Estates & Bequests	40,465
ADA Rebate	136,063
<b>Total Extraordinary Income</b>	<b>\$ 235,465</b>

**Total Income** \$ 1,569,943**Expenses**

Salaries and Benefits	\$ 320,358
Repairs & Maintenance	46,832
Donations	1,321
Supplies and Services	33,691
Materials and Programs	74,259
Insurance	31,128
Utilities	51,899
Other Expenses	1,985
Capital Expenses	252,607
CCHS Assessments	208,316
Epiphany School Support	505,000
<b>Total Expenses</b>	<b>\$ 1,527,396</b>

**Income over Expenses** \$ 42,547**Income**

Tuition and Fees	\$ 1,161,246
Total Parish Support	505,000
Endowment Support	-
Auction Support	20,000
PPP funds	290,937
Other Income	150,167
<b>Total Income</b>	<b>\$ 2,127,350</b>

**Expenses**

Salaries	1,202,833
Benefits	272,904
Textbooks	39,430
Instructional Expenses	76,918
Repairs & Maintenance	32,957
Insurance	31,127
Utilities	42,249
Capital Expenses	254,698
COVID expenses	119,647
Technology Expenses	37,760

**Total Expenses** \$ 2,110,523**Income over Expenses** \$ 16,827

Our financial results for the fiscal year ended June 30, 2021 include income from the Paycheck Protection Program established during the pandemic.

The funds were awarded based on payroll dollars of the parish and school. We used the funds to cover extraordinary expenses that we incurred due to COVID 19. A portion of the school related expenses are noted as a separate line item while other parish and school costs were incurred through decreases in income

(collections and tuition) and increases in payroll and capital expenses.

Thank you for your generosity to Epiphany Parish and School! This was an historic and challenging year, but the support of parishioners and friends enabled us to conclude the year on a clear note.

May this new year of grace be bright for you and your families. Sincerely, Angie O'Connor, Business Manager

# FROM FATHER ERIC

## (MAY IT BE A) HAPPY NEW YEAR!



Dear Brothers and Sisters in Christ,

I noticed an article recently about one more group of folks who are burned out from pandemic-related stresses: clergy.

This after reading about stressed and burned out American workers. A Wall Street Journal subtitle: "Workplace stress is rampant and resignations have risen; employers are trying four-day workweeks, mandatory vacation days and other new ways of working".

Elsewhere, we find how the entire medical/health field remains saddled to the pandemic, resulting in... burnout. One headline that represents many, many more: "U.S. Faces Crisis of Burned-Out Health Care Workers. Hospital leaders are sounding the alarm as health systems face an exodus of exhausted and demoralized doctors, nurses and other front-line workers."

Another field: police enforcement. "Violence, Stress, Scrutiny Weigh On Police Mental Health." I am not surprised at all, in light of the growing divisions in society, along racial fault lines and questions of basic law and order.

So, now back to clergy. This was in the Washington Post just before Christmas: "The first Christmas as a layperson: Burned out by the pandemic, many clergy quit in the past year." What explains this? The author suggests that there is "an exodus of clergy who have left ministry in the past couple years because of a powerful combination of pandemic demands and political stress. Amid fights about masks and vaccine mandates, to how far religious leaders can go in expressing political views that might alienate some of their followers, to whether Zoom creates or stifles spiritual community, pastoral burnout has been high."

This isn't a personal lament but I am finally seeing the cascading effect of burnout occasioned by stresses laid bare by the pandemic. Briefly, what is a solution? We need each other. Suffering alone and/or misunderstood is a recipe for disaster. May this new year serve galvanize our parish—"Christ's visible presence in the world."

Loneliness, as Francis said on Christmas, feeds the trauma. "Our capacity for social relationships is sorely tried; there is a growing tendency to withdraw, to do it all by ourselves, to stop making an effort to encounter others and do things together," the pope said.—Father Eric

# CELEBRATING OUR FAITH

## SACRAMENTS SCHEDULE

### Mass Schedule

Incense is used at 9:30am Sunday Mass. Ministers have Gluten-free Hosts. 7:30 am Sunday Mass is Broadcast on Facebook at Epiphanyparish.com, with drive up Communion till 8:30am (Canopy). \*Masks Required at 2 Masses.

#### Sunday, January 2, EPIPHANY OF THE LORD

7:30am\* Teresa Voirol  
9:30am Joanne Warren  
11:30am\* People of the Parish

#### Monday, Jan. 3, Holy Name of Jesus

7:00am Florentine Ripperda  
Lector: Kara Esker EME: Deb Willenborg

#### Tuesday, Jan. 4, St. Elizabeth Ann Seton, Religious

7:00am Doris Wallace  
8:15am Taimooraz Taimoorazy  
Lector: Kris Angles EME: Dorothy Meier

#### Wednesday, Jan. 5, Saint John Neumann, Bishop

7:00am Carla Lamb Himes  
8:15am Dale Albee  
Lector: Chris Niebur EMEs: Lynda Arnold, Ed & Newze Nnakwe

#### Thursday, Jan. 6, Christmas Weekday

7:00am LaVerne Evans  
8:15am Wayne Joseph Bobin, Sr.  
Lector: Jennifer Kamradt EME: Darly Menke

#### Friday, Jan. 7, Christmas Weekday

7:00am Margo Schmitt  
Lector: Mathew and Katrina Kinate EME: Aggie Hatch

#### Saturday, Jan. 8, Blessed Virgin Mary

7:30am All Souls' Day Memorial Society  
4:00pm Tom Van Deven  
Lector: Steve G. EME: Barb Burdett, Mary C. & Keith Walljasper

#### Sunday, January 9, BAPTISM OF THE LORD

7:30am\* Steve Penn  
9:30am William Warren (liv.)  
11:30am\* People of the Parish

### Confession Times

7:30am M-F 7am,3pm SAT 7am,9am,11am SUN

# REBOOT

a life-changing event

FEATURING INTERNATIONALLY ACCLAIMED  
SPEAKER, AUTHOR, AND TV HOST

CHRIS  
STEFANICK



WEDNESDAY  
April 6, 2022  
6:00PM - 8:15PM

Epiphany Catholic Church  
1000 E College Avenue  
Normal, IL 61761

Tickets: \$39 General Admission  
\$30 Group Rate (4 or more)

INFO/PURCHASE TICKETS:

306.452.2585

RealLifeCatholic.com

real life  
c a t h o l i c



# PARISH UPDATES

## Epiphany Youth Ministry

**High School Youth Group** meets Sunday January 2nd from 6:30-8pm in our new youth space (the old convent). Start your new year by growing in your faith with an awesome and fun community of teens!

**Catholic Heart Work Camp** is a weeklong summer mission trip for teens - you'll work tirelessly, think deeply, celebrate Mass, and build relationships. You'll dance, laugh till your side hurts, pray, change on the inside, and be part of transforming lives and communities for Christ! 8th graders and up are invited to join us in Memphis TN from June 12th-18th for Catholic Heart Work Camp. Contact Kara (kara.esker@epiphanyparish.com) for more info!

**Junior High Youth Group** is open to all 6-8th graders and meets once a month. Our next Junior High Youth Group is Friday, January 21st from 7-8:30pm. Come to the parish hall

to hang out, have fun, and grow in faith together!

## School Custodian Needed!

Epiphany Catholic School is looking for a part time custodian to work during the school day. Responsibilities include cleaning, facility set-up, compliance checks, and maintenance of school buildings. Experience to include knowledge of maintenance/cleaning equipment as



# PARISH CONTACTS

## Parish Office

(309)452-2585  
Epiphanyparish.com

## School Office

(309)452-3268  
Epiphanyschools.org

Fr. Eric Powell (Pastor)

pastor@epiphanyparish.com  
309-660-7860

Fr. Peter O. Okola, AJ (Vicar)

Fr.Peter@epiphanyparish.com  
703-626-8819

Deacon Mark Cleary  
(Baptisms)

mcleary08@comcast.net  
309-531-1062

Kara Esker (Youth, CCD, Pastoral Team)  
pastoralassistant@epiphanyparish.com

Stephanie Demboski

Adult Faith Formation & Evangelization Coordinator  
stephanie.demboski@epiphanyparish.com

Domine King, Joyce Tellman (Office Staff)

office@epiphanyparish.com; Angie O'Connor business.manager@epiphanyparish.com

Mike Essington (IT) it.director@epiphanyparish.com

Spiritual Directors:

Sylvia Hernandez sylviahernandez50@gmail.com  
Deacon Mark Cleary mcleary08@comcast.net

## Parish Outreach

If you find yourself in serious economic need, Epiphany Parish and St. Vincent de Paul want to help. Email Orlando Lopez our Outreach coordinator: outreach@epiphanyparish.com.

# SHARING THE MISSION THANK YOU!

## Gifts from Our Parish Family

<b>December 19, 2021</b> .....	\$11,319
E-giving.....	\$15,102
Special.....	\$880
Parish Endowment.....	\$280
School Endowment.....	\$135
Capital Improvement.....	\$465
<b>Weekly Budget</b> .....	\$24,500
YTD Budget (25 weeks) .....	\$612,500
YTD Income.....	\$585,648
YTD Balance.....	(\$26,852)



**Cover: Adoration of the Magi, Bartolomé Esteban Murillo, 1655, Toledo Museum of Art, Ohio.**

Bartolomé Esteban Murillo became the leading painter in devoutly Catholic Seville, Spain, from the 1640s to the end of his life. He painted almost exclusively for Seville's many churches and religious orders. This painting is his only known depiction of the Adoration of the Magi—the wise kings from the east who come to worship the Christ Child. Murillo treats the subject in an appealingly human way, convincingly expressing the joy, solemn contemplation, and humble devotion of the three kings and their entourage as the infant Jesus is tenderly presented to them by the young Virgin Mary.

well as familiarity with basic landscaping and minor building repair practices, additional duties as directed. Applicants must complete all diocesan requirements. If interested in applying, please contact [jennifer.kamradt@epiphanyschools.org](mailto:jennifer.kamradt@epiphanyschools.org).

## Women's Bible Study

Start the New Year off right.... Join us for a new *Walking with Purpose* Bible Study: "Order Your Priorities: Building a Life Well Lived". Ordering Your Priorities: Building a Life Well Lived is an immensely practical Bible study that will help you put the most important things first. We'll begin by paying attention to the One who made us, because He can best tell us what we need for our lives to run well. Tuesdays, Jan 11-Feb 22, 2022, From 8:30-10:00am or 6:30-8:00pm. See registration details on the Events page at [epiphanyparish.com](http://epiphanyparish.com)

## Starting a Small Group

Have you ever wanted to start a Small Group that studied something of interest to you? But you didn't know where to begin? Come to our Leader Formation Class Jan-February and learn all you need to know to kick off a small group! Begins Sunday Jan. 9 from 7:30-9:00 pm in the Rectory Room, ends before Lent.

## Chris Stefanick is Coming April 6!

Who? Chris Stefanick is an internationally acclaimed author, speaker, and television host who has devoted his life to inspiring people to live a bold, contagious faith. He has been called "one of the most engaging defenders of the Christian faith on the scene today." Chris's live seminars reach more than 85,000 people per year. His reality TV show, videos, and radio spots reach millions of people, and his educational initiatives are turning the tide in the Church. He authored the Chosen Confirmation program which has already formed more than 500,000 teens. Above all, Chris is proud to be the husband to his wife Natalie and father to their six children. Tickets on sale soon!

## Birthright Thanks You!

Birthright thanks Epiphany Parish for 7800.00 collected in baby bottles these past few months. You can still bring your bottle to the Birthright office or call Kathy Janke at 309-242-8893. The baby bottle fundraiser is the only fundraiser that Birthright of Bloomington holds every year so that volunteers can assist pregnant women in a downtown office. If you would like to volunteer, please call Kathy. Thank you, again, for your generosity and prayers!

# SERVICE OPPORTUNITIES

## Funeral Committee Volunteers Needed

We want to resume funeral luncheons after January 1st, but we need YOU! Serving on the Funeral Committee is a concrete way to provide comfort to grieving families when a loved one is lost. There are a variety of ways you can help: donate desserts, set up the parish hall, help during lunch, or clean up. Committee members are not committed to help with every funeral lunch. To join the Funeral Com-

## 2021 CONTRIBUTION STATEMENT

Please tear out, fill out and return this document if you would like to receive a statement of your contributions to Epiphany Parish. Return it to the parish office, or place it in the collection basket on your way into church. Email Option: fill in all lines, but print your email address clearly below.

EMAIL: \_\_\_\_\_

Name: \_\_\_\_\_

Envelope Number: \_\_\_\_\_

Home Address: \_\_\_\_\_

Tuition Statements can be obtained by logging in to your FACTS account and printing a 2021 summary. Contact Angie in the Business Office with questions.

mittee, contact Suzanne Ferrara at [sferra@ilstu.edu](mailto:sferra@ilstu.edu) or join the Funeral Committee on Flocknote.

## Join us at Midwest Food Bank

Epiphany Parish is sponsoring another volunteer service project at Midwest Food Bank on Thursday, January 13 from 6-8 PM. The Food Bank is located at 2031 Warehouse Road in Normal. We are looking for 25 volunteers from our parish to help sort and/or pack bulk food items, most of these volunteer roles do not involve heavy lifting. Volunteers must be age 10 or older. We ask that there be at least one adult to help supervise every three children. This is a fun opportunity to help feed the hungry, learn more about Midwest Food Bank, and meet your fellow parishioners. To sign up for this project, please go to: <https://x.gldn.io/JqBpNU1xOjb> or visit the website. If you have any questions you may contact Joe Morrow at 309-824-2193, or email Orlando Lopez at [outreach@epiphanyparish.com](mailto:outreach@epiphanyparish.com).

## Faith in Action News

Faith in Action is Charleston Bound this spring from April 3-9th! For all the details of this **bus trip**, visit <https://bnfia.org/charleston-sc-bus-trip> or call Jan at 309.827.7780. Book by Jan. 27, 2022! In addition, are you ready to brighten an older adult's day? With Faith in Action, **volunteer drivers**, shoppers and friendly visitors choose when and how often they volunteer. To register for Volunteer Orientation, email [Stacey@bnfia.org](mailto:Stacey@bnfia.org) or call (309) 827-7780. Upcoming dates: Jan. 4, 2022 1:00 PM - 2:30 PM, Feb. 1, 2022 1:00 PM - 2:30 PM

*Hail, Guardian of the Redeemer,  
Spouse of the Blessed Virgin Mary.  
To you God entrusted his only Son;  
in you Mary placed her trust;  
with you Christ became man.*

*Blessed Joseph, to us too,  
show yourself a father  
and guide us in the path of life.  
Obtain for us grace, mercy and courage,  
and defend us from every evil. Amen.*



# Kibler-Brady-Ruestman Memorial Home

Catholic Funeral Directors: Dan Brady ~ Tim Ruestman  
1104 N. Main St. • Bloomington  
309.828.2422 ~ [www.KiblerBradyRuestman.com](http://www.KiblerBradyRuestman.com)

Let's talk about your real estate needs.



**Janel Harrison**

Proud Parent of Two Epiphany Students

(309) 825-1668 | [JanelHarrisonHomes@kw.com](mailto:JanelHarrisonHomes@kw.com)  
[www.facebook.com/RealtorJanelHarrison/](http://www.facebook.com/RealtorJanelHarrison/)



GROW YOUR BUSINESS WHILE SUPPORTING YOUR LOCAL PARISH.

Purchase a bulletin ad today!

support our  
**ADVERTISERS**

### "Together We Grow... One Jewel at a Time"

- Outdoor play area and underground sprinkler pad
- Music, Gymnastics and Sign Language
- Field Trips on our own fleet of buses
- Parent's Nights Out once a month
- Locally owned and operated by Bob and Julie Dobski



#### Three Convenient Locations:

4117 E. Oakland Ave., Bloomington  
1730 Evergreen Blvd., Normal  
210 N. Williamsburg Dr., Bloomington  
[www.littlejewelslearningcenter.com](http://www.littlejewelslearningcenter.com)

**Citizens Bank**  
Proudly Serving the Area since 1903!  
Chatworth Normal  
815-635-3134 309-452-3360  
[www.CBChatworth.com](http://www.CBChatworth.com)  
Member FDIC Equal Housing Lender

**Larson & Darby Group**  
Architecture Engineering Interiors  
815.484.0739

**SUPPORT YOUR LOCAL PARISH.**  
Buy a bulletin ad space today!

support our  
**ADVERTISERS**

play more!  
grow more!  
gingerbread house  
[gingerbreadhousetoys.com](http://gingerbreadhousetoys.com)

**ADT-Monitored Home Security**  
Get 24-Hour Protection From a Name You Can Trust

- Burglary
- Flood Detection
- Fire Safety
- Carbon Monoxide

1-855-225-4251

**Disposal Service, Inc.**  
Waste Collection Services  
Residential • Commercial • Industrial  
Waste Equipment Rental • Recycling  
Municipal Solid Waste Disposal  
309-821-9743 email: [info@pdcare.com](mailto:info@pdcare.com)

**pixel BASH DESIGNS**  
CUSTOM NAME STICKERS • GIFTS  
GRAPHIC DESIGNER • PARISHIONER

**Birthright®**  
PREGNANT? NEED HELP?  
Free Pregnancy Tests  
All Services Free & Confidential  
[www.birthright.org](http://www.birthright.org)  
505 N. Center • Bloomington • 309-829-5430  
24 Hr. Hotline • 1-800-550-4900

**STAND OUT**  
with a PREMIUM DIGITAL AD  
on [PARISHESONLINE.COM](http://PARISHESONLINE.COM)

CONTACT US AT 800-950-9952

**health markets**  
Chris Bischoff, Licensed Insurance Agent  
309-824-4747 | HEALTH & MEDICARE  
[chris.bischoff@healthmarkets.com](http://chris.bischoff@healthmarkets.com)  
[www.facebook.com/ChrisBischoffHM](http://www.facebook.com/ChrisBischoffHM)

**College Hills Great Top**  
1522 E. College Ave.  
Normal, Illinois 61761  
Ph. (309) 452-2222  
Wholesale/Retail  
Open 7 Days  
Tim Leary - Owner/Operator

SUPPORT OUR ADVERTISERS!

**FREE AD DESIGN**  
WITH PURCHASE OF THIS SPACE  
CALL 800.950.9952

**WE'RE HIRING**  
AD SALES EXECUTIVES  
BE YOURSELF. BRING YOUR PASSION. WORK WITH PURPOSE.

- Work-Life Balance
- Paid Training
- Full-Time with Benefits
- Some Travel
- Serve Your Community

Contact us at [careers@4lpi.com](mailto:careers@4lpi.com)  
[www.4lpi.com/careers](http://www.4lpi.com/careers)

AVAILABLE FOR A LIMITED TIME!  
ADVERTISE HERE NOW!

Contact **Trey Hill** to place an ad today! [thill@4LPi.com](mailto:thill@4LPi.com)  
or (800) 950-9952 x2613

**DANIEL G. DENEEN**  
ATTORNEY & COUNSELOR AT LAW  
CONCENTRATION ON WILLS, PROBATE & COMMERCIAL LAW  
207 W. JEFFERSON, SUITE 603, BLOOMINGTON 663-0555

**ADT-Monitored Home Security**  
Get 24-Hour Protection From a Name You Can Trust

- Burglary
- Flood Detection
- Fire Safety
- Carbon Monoxide

1-855-225-4251

**NEVER MISS A BULLETIN!**  
Sign up to have our weekly parish bulletin emailed to you at [www.parishesonline.com](http://www.parishesonline.com)

**ENTEC**  
HVAC Service & Solutions  
• Energy Services • Building Automation  
(309) 697-2122  
[www.entecservicesinc.com](http://www.entecservicesinc.com)  
Building Performance. Building Relationships.

**Bloomington Meats**  
BEST MEAT on BUNN STREET

Custom Processing & Retail Market  
Mon & Tues 8am-5pm, Wed-Fri 8am-6pm, Sat 8am-4pm, Sun 11am-3pm  
2401 S Bunn 828-9731  
ASSORTED BUNDLES • OVER 50 FLAVORS OF BRATS • WEEKLY SPECIALS

**AVANTI'S**  
[www.avantisbloomington.com](http://www.avantisbloomington.com)  
ORDER ONLINE



663-1968  
1800 Eastland Dr., Bloomington  
www.carmodyflynn.com

Bloomington/Normal's Oldest  
Continuing Funeral Service

STEVEN E. HALL • ERIC J. WILLIAMS • JODELL A. JARMAN



**GENE AGNEW, Broker, Parishioner**  
Buying or Selling Your Home?  
309-530-0473 or geneagnewsells@gmail.com  
www.geneagnewsells.com  
HomeSmart Realty Group

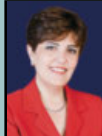
GROW YOUR BUSINESS WHILE SUPPORTING YOUR LOCAL PARISH.

Purchase a bulletin ad today!

AVAILABLE FOR A LIMITED TIME!

ADVERTISE HERE NOW!

Contact **Trey Hill** to place an ad today! thill@4LPi.com or (800) 950-9952 x2613



**Liliana Timoorazi**  
Broker, CRS, GRI  
Award Winner for Impeccable Customer Service, Loyalty & Integrity  
(309) 826-5559 • www.lilianacoldwellhomes.com  
A Relationship that will last forever

**Holiday Inn Express & Suites**  
Conference Center  
1715 Parkway Plaza Drive & Veteran Pkway  
309-862-1600 | Deacorp@aol.com  
Tony & Karen De Angelis, Owners

**Children's Center for Dentistry**  
Specialized Care for Kids

**BETSY ULRICH, D.D.S., M.S.**  
**SUGAR CREEK ORTHODONTICS, P.C.**  
200 S. Towanda Ave. Normal, IL 61761 (309) 452-7445  
400 North Chicago St. Lincoln, IL 62656 (217) 732-1073  
www.sugarcreekortho.com

**PETERSON**  
INSURANCE SERVICES, INC.  
Auto • Home • Business Farm • Life • Work Comp  
Dustin A. Peterson, Parish Member  
(217) 935-6605 • www.peterson.insurance

**Gregory M. Dietz, DMD**  
Pediatric Dentist  
309-827-KIDS(5437)  
www.bloomingtonpediatricdentist.com  
Parishioner

**STARCREST CLEANERS**  
PARISHIONER LUKE HERMES AND FAMILY

ONLINE ORDERING for curbside pick-up

**WEBER ELECTRIC INC.**  
RESIDENTIAL • COMMERCIAL INDUSTRIAL - DATA - COMM  
**SERVICE CALLS 827-7337**  
200 E LAFAYETTE  
For All Your Electrical Needs

**State Farm**  
**Axel Jimenez, Agent & Parishioner**  
309-451-3276 • axelismyagent.com  
Providing Insurance and Financial Services

3010 E. Empire Street • (309) 661.8322  
www.BIAGGIS.com

**SUPPORT YOUR LOCAL PARISH.**  
Buy a bulletin ad space today!

**William Streenz**  
Parishioner  
License# 192-000135  
Mobile Service  
Keys Duplicated - Locks Repaired  
24 Hour Emergency Service  
1509 N. Clinton Blvd. • 309-454-1713

**ADT-Monitored Home Security**  
Get 24-Hour Protection From a Name You Can Trust

- Burglary
- Fire Safety
- Flood Detection
- Carbon Monoxide

1-855-225-4251

**SUPPORT OUR ADVERTISERS!**

**Prairie Dental Associates**  
Quality Dentistry by Dental Professionals Who Value Your Trust.

- Cigna Dental Providers.
- Delta Dental Providers
- Free oral cancer screenings at every cleaning appointment.
- Office located behind Buffalo Wild Wings and Bloomington Avantis.

3220 Gerig Drive, Blm. • 309-662-7722  
Hours: Mon.-Tues. 8-5 • Wed. 8-7 • Closed Thurs. • Fri. 8-3  
PrairieDentalAssociates.com

Christopher M. Sikora, DMD Daniel R. Jacobsen, DMD

**Phillips & Associates, CPAs, PC**  
TAX AND ACCOUNTING SERVICES  
Richard W Phillips, CPA - Parishioner  
1600 Hunt Dr, Normal 452-2417

**HERMES**  
Service and Sales  
Trusted Since 1957  
Residential & Commercial  
HEATING • AIR CONDITIONING • REFRIGERATION • SHEET METAL  
309-828-8111  
HermesService.com

**CIOS**  
CENTRAL ILLINOIS ORTHOPEDIC SURGERY  
Orthopedic Care and Physical Therapy for the whole family. Specializing in Mako Robotic-Assisted Joint Replacement  
(309) 662-2278  
Proud parent of Epiphany and CCHS students

Dr. Brett Keller

**FREE AD DESIGN**  
WITH PURCHASE OF THIS SPACE  
CALL 800.950.9952

**We've Missed You!**  
Welcome Back to Mass

Stay connected to our faith community no matter where you are by signing up to get our bulletin delivered straight to your email!

www.ParishesOnline.com