

St. Mary Catholic Church

214 Church Street, Algoma, WI 54201

... since 1860

Pastor

Fr. Alvan Amadi

Email: aamadi@smsalgoma.com

Office:(920) 487-5005 Ext# 3

Religious Education

Barb Heiges

Email: bheiges@smsalgoma.com

Phone(920) 255-3326

Parish Ministries Coordinator

Donna Moran 920-723-1948

Email: dmoran@smsalgoma.com

Parish Trustees

Larry Feuerstein.....487-3956

Kevin Guilette493-6820

Parish Administrative Assistant

Patty Kubetz

Email: pkubetz@smsalgoma.com

St. Mary Grade School

Margaret Hall, Principal

Email: mhall@smsalgoma.com

Phone.....(920) 487-5004

Susan Dean, Secretary

Email: sdean@smsalgoma.com

Prayer Chain

Barb Harz.....(920) 255-2296

Gift Bearers

Patti Donart.....(920) 487-2651

Chairpersons

Pastoral Council

John Ortlieb.....487-9987

Finance Council

Mary Kay Bennett... 487-3206

Buildings & Grounds

Dan Vertz.....487-2091

Cemetery Association

Earl Krueger.....487-3861

Larry Feuerstein.....487-3956

Board of Education

Jamie Dachelet487-5374

Stewardship

Linda Andre487-2542

Jan Guilette.....856-6979

Worship

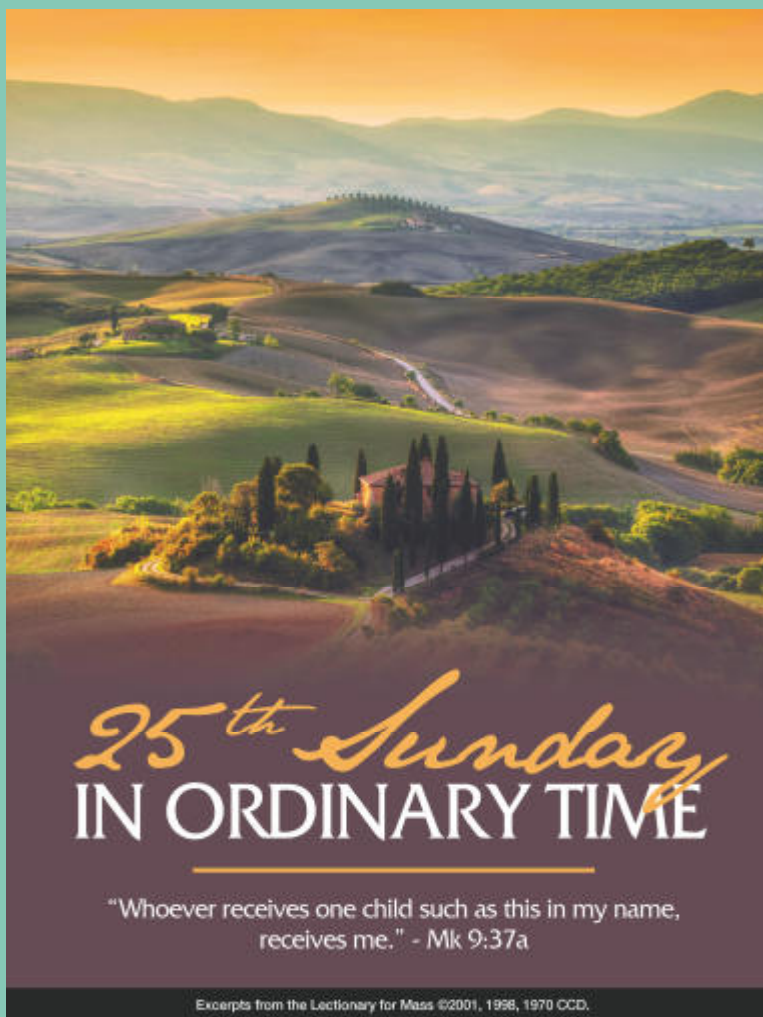
Karen Wautlet487-3754

VISION:

Love God, Love others, and form disciples for Jesus.

MISSION:

To build a Catholic Community that discovers Jesus, follows Jesus, worships Jesus, and shares Jesus with others.



SEPTEMBER 23, 2018

Call Parish Office For Sacramental Prep
Baptism • Marriage • RCIA
(920) 487-5005 Ext#100

Confessions according to schedule
and Confessions and Sacrament of Anointing
anytime by request.
Contact Father Amadi (920) 487-5005 Ext# 3

Check out
Formed.org

Parish Access
Code:
C3F6DM

St. Mary Mass Schedule



Saturday, September 22

4:00 pm For the People of the Parish

Sunday, September 23

8:15 am † Bob Wagner

Tuesday, September 25

8:05 am † Patrick Bair

Wednesday, September 26

8:05 am **Mass at Holy Rosary Kewaunee**

Thursday, September 27

7:40 am Pray the Rosary

8:05 am † Paul Zima

3:00 pm - 4:00 pm **Adoration & Confessions**

Friday, September 28

8:05 am 70th Wedding Anniversary of Mahlon & Jeanette Dier

10:15 am Mass at Algoma Long Term Care Center

Saturday, September 29

8:05 am † Mary Jerabek

8:45 am—10:00 am **Confessions**

4:00 pm For the People of the Parish

Sunday, September 30

8:15 am † Francis Vandermeuse

Saint Mary Parish Lights September 23—29



Steeple, Tabernacle and Grotto lights will burn in memory of Matt Wisnicky

This Week at St. Mary

Tuesday, September 25

10:00 am - Adult Catholic Christian Formation in the Knights of Columbus room. If you have ever wondered about the Blessed Virgin and her role in salvation, and would like to learn more, please come and be part of our Adult Faith Formation. You do not have to attend every single one of them. All are welcome.



Wednesday, September 26

3:35 pm—5:00 pm

K—6th grade Faith Formation Classes

6:45 pm—8:30 pm

7th—11th grade Faith Formation Classes

Meet in the Religious Education/Social Hall (Old Library in basement)

6:30 pm Adult Catholic Christian Formation

in the Knights of Columbus room. Subject is the same as Tuesday mornings.

Monday, October 1

10:00 am –Scrip order is due in the parish office; pick-up will be the following week-end after masses.

Order Scrip and support your parish. You can buy your groceries and gas with scrip. It does not cost you anything extra. Please come and check it out!



Readings for the Week of September 23, 2018

- Sunday: Wis 2:12, 17-20/Ps 54:3-4, 5, 6-8 [6b]/ Jas 3:16--4:3/Mk 9:30-37
- Monday: Prv 3:27-34/Ps 15:2-3a, 3bc-4ab, 5 [1]/ Lk 8:16-18
- Tuesday: Prv 21:1-6, 10-13/Ps 119:1, 27, 30, 34, 35, 44 [35]/Lk 8:19-21
- Wednesday: Prv 30:5-9/Ps 119:29, 72, 89, 101, 104, 163 [105]/Lk 9:1-6
- Thursday: Eccl 1:2-11/Ps 90:3-4, 5-6, 12-13, 14 and 17bc [1]/Lk 9:7-9
- Friday: Eccl 3:1-11/Ps 144:1b and 2abc, 3-4 [1]/Lk 9:18-22
- Saturday: Dn 7:9-10, 13-14 or Rv 12:7-12a/Ps 138:1-2ab, 2cde-3, 4-5 [1]/Jn 1:47-51
- Next Sunday: Nm 11:25-29/Ps 19:8, 10, 12-13, 14 [9a]/Jas 5:1-6/Mk 9:38-43, 45, 47-48

Our local Algoma chapter of St. Vincent DePaul Society is having a Friends Walk on Saturday, September 29th.



Registration is at 8:30 am at our store located at 303 Third Street. Walkers will leave the store at 9:00 am and proceed to the beautiful Ahnapee Trail for a 3 mile walk. Refreshments, snacks and T-shirts will be provided.

There is a \$15 walk donation. Pledge sheets are available at our store or online at fopwalk.org. For more information, call Sharon at (920) 487-3806 or Gayle at (920) 255-2981.

All proceeds benefit our local community. Please help us to help others who endure difficult times. Donations should be made out to St. Vincent DePaul

Sacred Vessels for the Sacred Liturgy

You must have noticed the various sacred vessels used in the celebration of Holy Mass. These vessels contain the host and wine to be consecrated so that they become the precious Body and Blood of Jesus Christ. There are several of them and each has a distinct name to identify exactly what they are used for in the sacred liturgy. The vessel that holds the consecrated hosts is called a ciborium. The root of the word is the Latin for food *cibus* (pronounced with a hard c as in Cheese!). A ciborium can either have a stem with which it stands on the Altar and where it is held during the distribution of Holy Communion or it can be without a stem. A ciborium almost always has an arched cover which distinguishes it from a chalice. There is also a paten which is the flat metal plate on which is placed the large host which the priest consecrates, elevates and consumes during Holy Mass.

Another principal sacred vessel is the Chalice which is the ornate metal goblet which contains the Precious Blood of Christ. Sacred vessels are made with special care because they contain the greatest treasure of the Church, namely, the very Body and Blood of Christ which we receive in Holy Communion. There is a requirement that they be made with precious metal and not wood, clay or crystal. This reason is that the former is more durable than the latter.

In the scriptures, chalices are featured prominently in sacred worship. In Psalm 116:12 we hear the psalmist pose a prayerful question: "what shall I render to the Lord for all blessings to me?" The answer is given thus: "I will lift up the chalice of salvation and call on the name of the Lord" (Ps 116:13). St. Paul asks the Corinthians: "The cup of blessing which we bless, is it not a participation in the Blood of Christ? The bread which we break, is it not a participation in the Body of Christ?" (I Cor 10:16). Besides, the Eucharistic prayers of the mass frequently make reference to the "Chalice of blessing."

Every newly ordained priest receives from family and friends a new chalice with which to offer the Holy Sacrifice of the Mass. It is with this chalice that the newly ordained priest celebrates his First Mass soon after ordination. For the rest of a priest's life, he takes special care of this Chalice which for him remains a priceless gift. In many ways, a priest's chalice symbolizes his unique participation in the one priesthood of Jesus Christ. Like most priests, I have my own personal chalice which is near and dear to my heart!

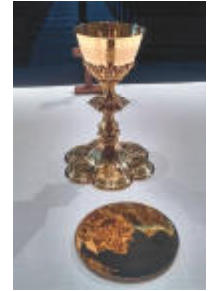
Furthermore, priests who celebrate significant anniversaries are often gifted with a chalice. One of such Chalices was found in the sacristy closet soon after my arrival here at the parish. It was a gorgeous chalice gifted to Msgr William Kraemer in 1910 by the Bohemian priests of the Green Bay Diocese at the celebration of the 25th anniversary of his ordination to the priesthood. Although the Chalice was somewhat rusty and needed to be professionally restored (which a generous benefactor who would like to remain anonymous has paid for!), one could tell that it was a beautiful and exquisite gift.

We shall be using this newly restored Chalice of Msgr. Kraemer's to celebrate Mass on Sundays and special solemnities. In celebrating Mass with this chalice, we shall be praying in thanksgiving for Msgr. Kraemer's 38-year ministry here as pastor, during which time he guided the efforts to build and dedicate our parish church in 1906. Interestingly, the year St. Mary Church was dedicated in 1906 was also the year the priestly ordination of the first son of this parish, Father Hubert McDonald, took place. With this chalice therefore, we shall also be praying for the next son of this parish to be ordained a priest, as well as for an increase of vocations.

Speaking of priest sons of Algoma, Msgr. William Groessl was another ordained in 1926. Prior to arriving here, I had heard much about this priest since he taught for many years at St. Francis de Sales Seminary in Milwaukee, where I was privileged to serve for four years as the Director of Worship and Liturgical Formation. Many years after his death, Msgr Groessl is still recalled and revered as a beloved seminary formator and a wise spiritual director of future priests. There have been several other priest sons of St. Mary since then and one of whom even became a bishop. Father Mark Schmitt was ordained a priest in 1948 and auxiliary bishop of Green Bay in 1970. Our parish has also been blessed with many other sons and daughters who have become religious brothers and sisters. For all of them and for the witness of their lives, we give thanks.

May Christ grant us holy priests, today more than ever.

Fr. Amadi



Thank you, St Mary Parish for your contribution to school and office supplies. Feel free to continue donating if possible—our needs never stop. Big thanks & Blessings.



Tweets from: [Pope Francis @Pontifex](#)
September 18 2018

"Meek and humble of heart, close to the people, with compassion, with meekness and tenderness. This is Jesus."



Each Week our Stewardship Goal is \$6,000.00.

Weekend of September 15 & 16

Stewardship & Loose Collection \$ 4,068.41

**Saint Mary Stewardship is at 18.89%
of the year-end goal.**

(Fiscal Year July 1, 2018 — June 30, 2019)

STEELE CHIROPRACTIC
 Dr. Marcus Steele
 Dr. Marie Chapman
 Dr. Kari Wied
INFANT-TO-ELDERLY CARE
 1218 Ellis Street, Kewaunee, WI
 920-388-3440

Open Tues., Thurs., Fri & Sat
 10:30am-12:30pm & 2:30-4:30pm
 Closed Sun., Mon., Wed.

City of Flowers Greenhouse
 1111 Clark St., Algoma
 920-487-8250

OPEN YEAR ROUND

SCHINDERLE FUNERAL HOME, INC.
 Laurie Schinderle
 William J. Schinderle
 Parish Members
 1600 Schinderle Ln., Algoma, WI.
 487-2662 • www.schinderle.com

Meade Manor Pet Clinic
 Dr. Debbie Moede, D.V.M.
 Veterinary Services and Pet Boarding
 (3 mi. East of Casco on Hwy 54)
837-2511

JUNIO ELECTRIC

Call Bob 487-2512
 Algoma, WI
 Parish Member

UPGRADE TO A VIBRANT ad
 Contact us for details • 800-950-9952

SPREAD THE WORD
 A Thriving, Vibrant Community Matters

SUPPORT OUR ADVERTISERS

FUNERAL HOMES
 FURNITURE - FLOORING - BEDDING

WM
 WIESNER & MASSART, INC
 CASCO 920-487-7414
 ALGOMA 920-487-2061
 wiesnermassart.com

PROTECTING SENIORS NATIONWIDE
 MEDICAL ALERT SYSTEM
\$29.95/MO
 BILLED QUARTERLY

CALL NOW! 1.877.801.7772 • WWW.24-7MEDALARM.COM

catholicmatch®
 Wisconsin
 CatholicMatch.com/WI

KF Kinnard Farms
 Our life. Our work. Our home.
 Proud to be a Member of Our Local Community
 Casco, WI
 920 837-7644 • www.kinnardfarms.com

WEBER INSURANCE
487-3435
 Parish Member

AMERICAN FAMILY INSURANCE
 Brian Jagodinsky, Agent
 Phone: 388-3761
 1334 Ellis Street • Kewaunee, WI

WE'RE HIRING
AD SALES EXECUTIVES

- Full Time Position with Benefits
- Sales Experience Preferred
- Paid Training
- Overnight Travel Required
- Expense Reimbursement

CONTACT US AT careers@4LPi.com
www.4LPi.com/careers

GREEN BAY DIOCESAN MUSEUM
 At St. Francis Xavier Cathedral
 140 So. Madison St.
 Green Bay, WI 54301
 Tours Available
 Phone 920-432-4348

COUNTRYWIDE CONSTRUCTION & DESIGN, LLC
 "Creating & Improving Homes"
www.countrywide-construction.com
kevin@countrywide-construction.com
 Kevin J. Guilette (920) 856-6982
 Parish Member

Wiese Memorials
 1801 Flora Ave., Algoma
 920-487-5524
 Jason & Jacque Wiese, Owners
 Family Owned
 Parish Members
 Cemetery Monuments

KONOP MEATS, INC.
 N2062 Hwy AB • Denmark
 920-388-3892 • 920-863-5881
 "Since 1910"
 STANGELVILLE
 Quality Meat and Sausage
 Mark J. Konop & John L. Konop

GreenStone FARM CREDIT SERVICES
 Sturgeon Bay • 920-743-8150

See What's in Store!
 JEWELRY • ROSARIES • BOOKS
 AND MORE
www.parishstore.com

COMPLIMENTS OF ALGOMA NET COMPANY

AVAILABLE FOR A LIMITED TIME
ADVERTISE YOUR BUSINESS HERE
 Contact Ms. Terry Bauer to place an ad today!
tbauer@4LPi.com or (800) 950-9952 x2629

FREE AD DESIGN WITH PURCHASE OF THIS SPACE.
 - 800-950-9952 -

THRIVENT FINANCIAL
 Connecting Faith & Finance for good™
 ASK ME ABOUT THE THRIVENT STORY

THrivent FINANCIAL GROUP INC. is an Equal Opportunity Employer. Minorities and women are encouraged to apply.

THrivent FINANCIAL GROUP INC. is an Equal Opportunity Employer. Minorities and women are encouraged to apply.

THrivent FINANCIAL GROUP INC. is an Equal Opportunity Employer. Minorities and women are encouraged to apply.

PAPHAM AUTO SERVICE
 (920) 388-3530 N2315 Hwy 42
 Fax (920) 388-4007 Kewaunee, WI 54216

IN this Parish
 Doing His Works

KNIGHTS OF COLUMBUS
487-9929

GreenStone FARM CREDIT SERVICES
 Sturgeon Bay • 920-743-8150

Tax & Accounting Services

GreenStone FARM CREDIT SERVICES
 Sturgeon Bay • 920-743-8150

Tax & Accounting Services

GreenStone FARM CREDIT SERVICES
 Sturgeon Bay • 920-743-8150

Tax & Accounting Services

GreenStone FARM CREDIT SERVICES
 Sturgeon Bay • 920-743-8150

Tax & Accounting Services

GreenStone FARM CREDIT SERVICES
 Sturgeon Bay • 920-743-8150

Tax & Accounting Services

GreenStone FARM CREDIT SERVICES
 Sturgeon Bay • 920-743-8150

Tax & Accounting Services

GreenStone FARM CREDIT SERVICES
 Sturgeon Bay • 920-743-8150

Tax & Accounting Services

GreenStone FARM CREDIT SERVICES
 Sturgeon Bay • 920-743-8150

Tax & Accounting Services

GreenStone FARM CREDIT SERVICES
 Sturgeon Bay • 920-743-8150

Tax & Accounting Services

GreenStone FARM CREDIT SERVICES
 Sturgeon Bay • 920-743-8150

Tax & Accounting Services

SUPPORT THE ADVERTISERS THAT SUPPORT OUR COMMUNITY

HELP PROTECT YOUR FAMILY
CALL NOW! 1-888-891-6806

AUT AUTHORIZED DEALER

HOME SECURITY TEAM

ABC FAMILY DENTAL SERVICES, S.C.
 613 CENTER DRIVE
 LUXEMBURG, WI 54217
 Telephone (920) 845-2225

Dr. Bryan W. Iwen
 Dr. Carmen A. Iwen

PARISHES online
 Largest online directory of Catholic Churches

27 Pines Golf Course and Range
 "Pay a Little Play a Lot!"
 5611 Silverdale Rd
 Sturgeon Bay 920-746-8762

BWS Hauling
 Commercial & Industrial
 Trash & Scrap Metal Service
 2 yd - 50 yd boxes
920-388-3553 Locally owned

McNulty Surveying & Mapping LLC
 Terrence J. McNulty
 Professional Land Surveyor
 (920) 856-6711
 300 E. Park Street, Forestville
 "SERVING YOU SINCE 1998"

NEVER MISS A BULLETIN!
 Sign up to have our weekly parish bulletin
 emailed to you at www.parishesonline.com