



*At St. Charles, all are invited to
meet Christ, know Christ,
love Christ and serve Christ.*

January 2, 2022
THE EPIPHANY OF THE LORD

*Wise Men Still Seek
Him*



*“Where is the newborn king of the Jews?
We saw his star at its rising and have come to do him homage.”*

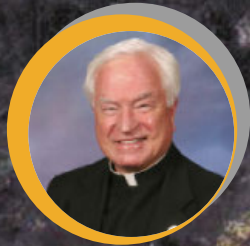
Matthew 2:2



313 Circle Drive, Hartland, WI 53029 • 262-367-0800
www.stcharleshartland.com • email: parish@stcharleshartland.com



WELCOME TO ST. CHARLES - WE ARE HERE FOR YOU



PASTOR
Fr. Ken Omernick



ASSOCIATE PASTOR
Fr. Nick Baumgardner



PERMANENT DEACON
Rob Mitchell

ST. CHARLES STAFF TEAMS

TEACHING PARISH SEMINARIANS:

Robert Ross, rross@sfs.edu

David Sweeney, dsweeney@sfs.edu

SCHOOL TEAM 262-367-2040

Principal/Team Lead: Dan Garvey, Ext. 208,
dgarvey@stcharleshartland.org

Advancement Officer: Allison Caswell, Ext. 227,
acaswell@stcharleshartland.org

School Administrative: Lisa Moehrke, Ext. 206,
school@stcharleshartland.com

School Administrative: Karen Dejewski, Ext. 206,
school@stcharleshartland.com

DISCIPLESHIP TEAM

Associate Pastor/Team Lead: Fr. Nick Baumgardner,
nbaumgardner@stcharleshartland.org

Adult Small Groups: Maria Notch, Ext. 220,
mnotch@stcharleshartland.org

Children's Discipleship: Alicia Van Hecke, Ext. 205,
avanhecke@stcharleshartland.org

Student Discipleship Lead: Nick Scanlan, Ext. 209,
nscanlan@stcharleshartland.org

Student Discipleship Co-lead: Rachel Heffron, Ext. 221,
rheffron@stcharleshartland.org

Discipleship Coordinator: Marianne Giovingo, Ext. 230,
mgiovingo@stcharleshartland.org

Baptism Coordinator: Mary Jo Romportl, Ext. 202,
mjromportl@stcharleshartland.org

OPERATIONS TEAM

Operations Manager/Team Lead: Marge Beck, Ext. 201,
mbeck@stcharleshartland.org

Facilities Manager: Mike Cattani, Ext. 210,
mcattani@stcharleshartland.org

Maintenance Manager: Tim Orzechowski, Ext. 217,
torzechowski@stcharleshartland.org

Bookkeeping Specialist: Dee Anne Hamer, Ext. 215,
dhamer@stcharleshartland.org

Cornerstone/Safeguarding: Karen Dejewski,
cornerstoneproject@stcharleshartland.org

WORSHIP TEAM

Worship Lead: Peg Kasun, Ext. 225,
pkasun@stcharleshartland.org

Deacon: Deacon Rob Mitchell
rmitchell@stcharleshartland.org

Liturgist : Elizabeth Thompson, M.Div., 262-367-6704
ethompson@stcharleshartland.org

Musician: Scott Currier, Ext. 225,
scurrier@stcharleshartland.org

Wedding Coordinator: Dee Anne Hamer, Ext. 222,
dhamer@stcharleshartland.org

COMMUNICATIONS & STEWARDSHIP TEAM

Assist. to the Pastor/Team Lead: Terrie Carew, Ext. 224,
tcarew@stcharleshartland.org

Communications Coordinator: Allison Caswell, Ext. 227,
acaswell@stcharleshartland.org

Graphic Design Specialist: Renee Krier, Ext. 224,
rkrier@stcharleshartland.org

Engagement Coordinator: Marianne Giovingo, Ext. 226,
mgiovingo@stcharleshartland.org

Parishioner Engagement: Nancy Neuser,
nneuser@stcharleshartland.org

Administrative: Kathy Gillstrom, Ext. 200,
kgillstrom@stcharleshartland.org

Administrative: Mary Jo Romportl, Ext. 200,
mjromportl@stcharleshartland.org

PARISH OFFICE: 262-367-0800,
Mon. - Fri., 8 am - 4 pm

EMAIL US: parish@stcharleshartland.org

WEBSITE & LIVESTREAM: www.stcharleshartland.com

PARISH SCHOOL: 262-367-2040,
school@stcharleshartland.com



WELCOME TO ST. CHARLES - WE ARE HERE FOR YOU

SATURDAY MASS OF ANTICIPATION: 5:00pm

SUNDAY MASS TIMES: 7:00am, 9:00am, 11:00am & 6:00pm

WEEKDAY MASS: Monday - Friday: 8:30am & Saturday: 8:30am

TUESDAY TRADITIONAL MASS

Monthly on the fourth Tuesday at 5:30 pm

EUCCHARISTIC ADORATION

Mondays: 5:00-7:00pm with closing prayer (includes music)

Tuesdays: 6:30-8:00pm with 7:30pm Rosary and closing prayer

Fridays: 9:00am-3:00pm with the Divine Mercy Chaplet at 3:00pm followed by Benediction

RECONCILIATION

Saturdays: 3:30pm - 4:30pm & Thursdays: 5:00pm - 6:00pm or by appointment (schedule by calling the Parish Office).

SACRAMENT OF THE SICK

By appointment with Fr. Ken or Fr. Nick (schedule by calling the Parish Office).

ANOINTING MASSES: 2nd & 4th Fridays every month at 8:30 am

WE ARE HERE TO HELP YOU WITH:

- JOINING OUR PARISH
- PLANNING A WEDDING
- EXPECTING, ADOPTING OR A BIRTH OF A CHILD
- BECOMING FULLY CATHOLIC
- JOINING A SMALL GROUP

For help with any of these areas please contact the Parish Office at 262-367-0800 or parish@stcharleshartland.org.

OUTREACH SERVICES TEAM: Terri Blazek: 262-367-7608, jtblazek@wi.rr.com

TO ASK FOR PRAYERS or to be added to the email list, please email: prayernetwork@stcharleshartland.org

FOR EMERGENCY PRAYERS, please email: emergencyprayers@stcharleshartland.org

Printed weekly prayer sheets are available on the information wall.



ST. VINCENT DE PAUL: if you need food, shelter or assistance call 262-367-0800 (Parish Office)

NEED HOME COMMUNION:

For information call 262-367-0800 (Parish Office)

Bulletin Advertisers of the Week

Please support our advertisers!

 <p>EVERT-LUKO FUNERAL HOME Family Helping Family 262-367-2156 Now Proudly Operating PASSAGES Cremation Service www.evertlukofuneralhome.com</p>	 <p>CARPET PLUS, INC. We Bring the Showroom to You! (414) 573-0105 Dan Taylor, Parish Member</p>
--	--

Mass Intentions for the Week of January 2nd



Sunday, January 2 ~ Epiphany of the Lord

7:00 am Living and Deceased Members of St. Charles
9:00 am † Charles Birschbach
11:00 am † Wayne Sanger
6:00 pm No Mass

Monday, January 3

8:30 am † Kevin O'Toole

Tuesday, January 4

8:30 am † Jerry Condon

Wednesday, January 5

8:30 am † Lorraine Donovan

Thursday, January 6

8:30 am † John Frank Gugg

Friday, January 7

8:30 am † Arlene Condon

Saturday, January 8

8:30 am † Mary Phannenstill
5:00 pm † Christine Melloch

Sunday, January 9 ~ The Baptism of the Lord

7:00 am † Brian Gillstrom
9:00 am Living and Deceased Members of St. Charles
11:00 am † Glen Marquardt
6:00 pm † Walter Herzog

Please pray for the repose of the souls of

Thomas Paulsen, James Krznarich, Carol Boehm
and Marilyn Barwick

May their souls and the souls of all the faithfully departed
REST IN CHRIST'S PEACE.

BULLETIN DUE DATES!

If you have an event(s) you would like to publicize in a January bulletin, please submit your information by the due dates listed below. Please submit all articles by 8:00 am on the due date. Thank you!

- Jan. 9th Bulletin information is due Monday, Jan. 3rd
- Jan. 16th Bulletin information is due Monday, Jan. 10th
- Jan. 23rd Bulletin information is due Wednesday, Jan. 12th

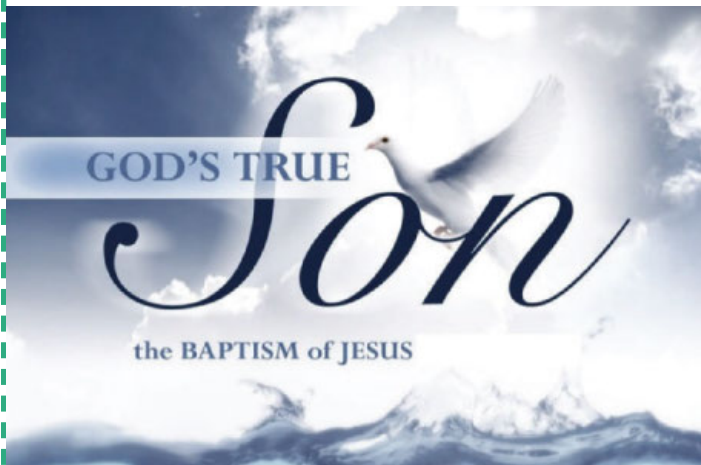


If you go to the hospital ... Federal laws prohibit hospitals and nursing homes from routinely informing us when you are admitted, so **please call the Parish Office to schedule a priest or communion visit (262-367-0800.)**



15 minutes each day spent in God's presence – reading, reflecting, responding and resting with his Word – adds up to 90 hours in one year. That is time well spent and a testimony to how a little at a time turns into something remarkable!

Reflection questions for Sunday, January 9th



- The prophet Isaiah was called to bring words of comfort and good news to the beleaguered Israelites held captive in Babylon. How do you minister to those in your life struggling to find God's presence?
- Paul taught Titus that baptized believers are called "to live temperately, justly, and devoutly." How well do you think you live by this moral and ethical standard?
- We hear today the account of the baptism of Jesus and God's words from heaven, "You are my beloved Son; with you I am well pleased." What do you imagine Jesus did (prior to the start of his public ministry) that was so pleasing to God?

Readings for the Week of January 2nd

Sunday: Is 60:1-6/Ps 72:1-2, 7-8, 10-11, 12-13 [cf.11]/Eph 3:2-3a, 5-6/Mt 2:1-12
Monday: 1 Jn 3:22—4:6/Ps 2:7bc-8, 10-12a/Mt 4:12-17, 23-25
Tuesday: 1 Jn 4:7-10/Ps 72:1-2, 3-4, 7-8/Mk 6:34-44
Wednesday: 1 Jn 4:11-18/Ps 72:1-2, 10, 12-13/Mk 6:45-52
Thursday: 1 Jn 4:19—5:4/Ps 72:1-2, 14 and 15bc, 17/Lk 4:14-22a
Friday: 1 Jn 5:5-13/Ps 147:12-13, 14-15, 19-20/Lk 5:12-16
Saturday: 1 Jn 5:14-21/Ps 149:1-2, 3-4, 5 and 6a and 9b/Jn 3:22-30
Next Sunday: Is 42:1-4, 6-7/Ps 29:1-2, 3-4, 3, 9-10 [11b]/Acts 10:34-38/Lk 3:15-16, 21-22 or, Is 40:1-5, 9-11/Ps 104:1b-2, 3-4, 24-25, 27-28, 29-30 [1]/Ti 2:11-14; 3:4-7/Lk 3:15-16, 21-22

READ. REFLECT. RESPOND. REST.

Cut out and keep in your Bible for reference!



NOTHING IS IMPOSSIBLE BECAUSE WE ARE BAPTIZED IN CHRIST

by Marianne Giovingo

St. Charles Engagement & Discipleship Coordinator

As we celebrate the Epiphany, we recall the reason for the journey of the Wise Men: to see the Christ Child. This Baby, born in the most unlikely of circumstances, drew a crowd with Him wherever He went, but always to Glorify His Heavenly Father, never for Himself. Have we responded to the Star leading us to the Light of the World? What are we willing to leave behind to seek and trust in the One who we believe has Saved, is Saving, and will always Save?

Next weekend, the Church celebrates the Baptism of our Lord Jesus. Liturgically, we jump from His birth to age 33 in one week. Jesus was free from sin and did not need to be baptized. He chose this path as an example for us, to come to the waters of rebirth and to build a rapport of trust with us: whatever we will go through, we can trust Jesus has gone through it before us and will be with us in it.

What day were you baptized? Just as important as your birthday, the day you became a child of God is one that should be celebrated: for me, it was Jan. 26, 1986. Why is the date important to recall and remember? By your Baptism, you have every grace [free gifts from God] you need to live a life of holiness; this Sacrament permits the Holy Spirit to dwell in you forever! The grace is given when needed—so be bold and ask for it!

Unlike Jesus, we will sin again, but we can renew our Baptismal promises and be restored to original purity every time we participate in the Sacrament of Reconciliation. God is working in our daily lives and is speaking to us in nature, through each other, and in Scripture.

So my question and challenge for you is this: **How is God inviting YOU to build on the NEXT STEP cards you received during Advent?** Jesus Christ is born, you are reborn in His Spirit—so begin [again] today and let the Lord lead you on adventures that will help you to **PRAY EVERY DAY, DISCOVER YOUR STORY, BE RECONCILED, AND MEDITATE ON GOD'S WORD!**

YOU ARE BAPTIZED IN THE NAME OF THE FATHER, SON, AND HOLY SPIRIT



LIVE THE LITURGY - INSPIRATION FOR THE WEEK

Human beings easily get bored. Life's routines can become so predictable that there is often little time for excitement or freshness. Today is all about the new and the wonderful. In celebrating the beauty and simplicity of the Epiphany, we see in tangible ways God's creative, redemptive, and restorative power. This refreshment and revitalization is offered not only to a select few but to everyone throughout the world. There is nothing routine or static about God. Surprises, wonders, miracles, opportunities, healings, and joy without measure are available to those who believe. There are never any endings, just beginnings. And, when darkness, boredom, and gloom seem to be the order of the day, a bright new light now shines pointing us to truth and reminding us that we are loved. ©LPi

EVERYDAY STEWARDSHIP RECOGNIZE GOD IN YOUR ORDINARY MOMENTS

THE LIGHT OF THE MOON

If you own a television that has been turned on at any point in the last month or so, chances are you've caught at least a scene or two of the 1946 classic film "It's a Wonderful Life."

If you're not familiar with the movie, it follows the life of George Bailey from childhood through adulthood. A dreamer by nature, George has big plans for himself that involve world exploration and adventure — but family and community obligations keep him tethered to the same spot on the map, leading an altogether ordinary life.

One of the most memorable scenes from that movie is of George dancing with his sweetheart Mary while they sing "Buffalo Gals — Won't you come out tonight/And dance by the light of the moon?"

That lyric always catches my ear. Of course, the moon doesn't have any light of its own. All the moon has is the ability to reflect the light that shines upon it.

The same holds for us, doesn't it? Our stewardship is purely a reflection of the grace granted to us by another. "Upon you the LORD shines," writes Isaiah, "and over you appears his glory." Every good action we will ever take begins in the mind of God. The fact that we have the honor of carrying it out on His behalf is a beautiful gift. It is God that makes our ordinary lives extraordinary.

In the end of the movie, George Bailey realizes that he

had a far greater life because, instead of being the hero of his own story, he allowed himself to reflect goodness onto others.

Remember — the magi didn't chart their own course. They merely followed the star.

— Tracy Earl Welliver, MTS ©LPi



CELEBRATING THE CHRISTMAS SEASON



The Epiphany house blessing of the door is a wonderful Catholic tradition for families. It's very simple to do and is a great way to pray with your family! All you need is a piece of blessed chalk. If you did not receive the blessed chalk during the reverse collection at this weekend's Masses, you may pick up your chalk in the parish office. Once you have your chalk, follow these directions and say this prayer.

EPIPHANY HOUSE BLESSING TRADITION

The traditional method for blessing homes this day is using chalk (an incarnational image because it reminds us of the dust of the earth from which we were made.) The chalk is used to mark the first two numerals of the year - initials of the three kings – last two numerals of the year, for example:

20 + C + M + B + 22

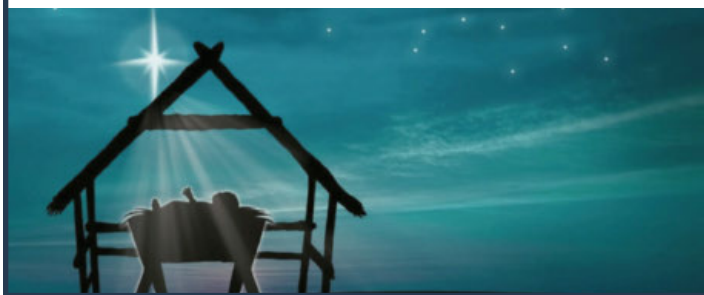
Over doorways – The numerals consecrate the new year. The initials remind us of the legendary names of the Magi, Casper, Melchior and Balthasar, and also stand for the Latin motto "Christus mansionem benedicat," or in English "May Christ bless this house."

This rhyme may be used after the door lintel is marked with chalk, or you may use this blessing:

Blessed are you Lord, God of all creation.
You bless us with your gift of chalk.

Today with a shining star you guided strangers
to your son, our Lord Jesus Christ.
In love the Holy Family welcomed them as guest.

Through the intercessions of your saints
Casper, Melchior and Balthasar
grant that we who bless our homes with this chalk
may be filled with kindness toward one another
and with hospitality to all those we welcome
in the name of your beloved Son,
who is Lord forever and ever.
Amen



THE BEAN CAKE

The blessing of the house may be followed with a special meal, traditionally a "King's Cake." In this cake is planted or baked a dried lima bean (or an alternate such as a jelly bean) and the person who finds it becomes king for a day with a royal paper crown. You may choose a favorite bundt-cake recipe, and for larger families or groups, you might have three kings.

The bean, or beans, when discovered by the new king may become the main jewel in the waiting paper crown(s). Crowns are then fitted and the new kings crowned with much fanfare.

The king has the honor of ruling the next twenty-four hours, chooses the menu and creates some new house rules effective for twenty-four hours. The king must also prepare a small talk for the family on the lesson they can learn from the story of the three holy kings.

Often the description of their dangerous journey and their encounter with Herod is enough to tout the perils of our own road in life and the need to keep our eyes ever on the star, the light of lights.



PARISH AND SCHOOL OFFICE HOLIDAY HOURS

The St. Charles Parish & School Offices will be closed on Monday, Jan. 3rd. The School Office will also be closed on Tuesday, Jan. 4th and reopen on Wednesday, Jan. 5th.

ST. CHARLES PARISH & SCHOOL
2022 AUCTION & DINNER

Hope Grows Here

BE JOYFUL IN HOPE, PATIENT IN AFFECTION, FAITHFUL IN PRAYER. ROMANS 12:12

SILENT & LIVE AUCTIONS, GRAND RAFFLE, COCKTAILS, DINNER,
DESSERT DASH, THEME BASKET RAFFLE, & MORE!

SATURDAY, FEBRUARY 26, 2022 5:30PM

6996 PENNSYLVANIA STREET, OCONOMOWOC, WI 53066
THE CLUB AT LAC LA BELLE

St. CHARLES
Parish and School

Introducing the new

FORMED[®]

The Catholic Faith. On Demand.

FORMED from the Augustine Institute is a great resource that will help further your spiritual journey throughout the coming year. It's FREE for St. Charles parishioners and guests and easy to use on your computer, tablet, smartphone or other electronic device. **Register today and deepen your faith at home or on the go during this Christmas Season.**

Get FORMED Now! It's EASY and FREE to Register!

- Go to formed.org/signup
- Select your parish
- Register with your name and email address
- Check that email account for a link to begin using FORMED

FORMED[®] PICK OF THE WEEK
January 2, 2022

WATCH

GOD'S DOORKEEPER: ST. ANDRÉ OF MONTREAL
This week, we celebrate the memorial of a humble doorkeeper, St. André of Montreal. Learn how this man became a great saint through his small acts of love!



God's Doorkeeper
St. André of Montreal

FORMED NOW! HOW TO PRAY
Whether you are a veteran in the spiritual life or are just beginning, start this year off right by recommitting yourself to prayer! Join Drs. Tim Gray and Elizabeth Klein as they discuss ways to kickstart your prayer life this year!



How to Pray
with Dr. Tim Gray & Dr. Elizabeth Klein

LEARN

LISTEN

PREPARE THE WAY OF THE KING BY DR. SCOTT HAHN
As we celebrate the Epiphany, Dr. Scott Hahn explains how we should understand the three Magi and their gifts to the Lord!




PREPARE THE WAY OF THE KING
DR. SCOTT HAHN

STEWARDSHIP (TIME, TALENT AND TREASURE)



RESPECT FOR LIFE AD CAMPAIGN

Because of all the precautions caused by the COVID-19 epidemic, we cannot be sure if we will be able to collect signatures for our January 22nd Freeman ad in our church. Since the ad costs between \$4,000 and \$4,500 and we can't be sure that we will have any signatures or donations, we have decided that we will not place the signature ad in the Waukesha Freeman this year. However, we do not want the January 22nd anniversary date to pass unnoticed. Therefore, we will place a smaller ad in the Freeman on that date. The size of the ad will depend on how many donations are sent to us for that purpose. If you would like to contribute to this year's ad, please make your check payable to: WRL-Waukesha County Chapter. Please write "January 22nd ad" at the bottom of the check. Send it to: Mary Carey, P.O. Box 12, Waukesha, WI 53187. Thank you so much for your help and your continued support.



ST. CHARLES NIGHT AT CULVER'S IN HARTLAND

Monday, January 3rd from 5:00-8:00 pm

Mention that you are with St. Charles and the School receives 10% of the evening's sales! Thanks for your support!

#GIVINGTUESDAY

THANK YOU!

Thank you to all those who graciously donated to St. Charles Parish on Giving Tuesday. Your generosity provided gift cards to needy families through our sister school, St. Anthony's School in Milwaukee.

Thank you for assisting us in helping others.

The Outreach Services Team

ST. VINCENT de PAUL SOCIETY

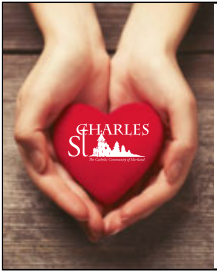


FOOD PANTRY NEEDS: brown sugar, pasta sides, rice sides, salad dressing, mandarin oranges, cooking oil, brownie mix, laundry detergent, toilet bowl cleaner, paper towel, toilet paper

Happy New Year and a blessed 2022 from the members and patrons of St Charles' Society of St. Vincent de Paul. Today is SHARE SUNDAY. If you would like to help with financial needs, donations may be placed in the SVdP collection boxes located in the narthex and next to the hall sign-up shelf. If your donation is intended for the food pantry, please note that on the envelope or memo portion of your check. All other donations will be placed in the SVdP general account to help with needs such as rent, security deposits, utility bills, household goods, and vehicle repairs. Thank you for helping us help others.

If you need assistance, please contact SVdP at 262-367-0800. If you need food, the pantry is located at 229 Lawn Street, Hartland. It is open Tuesdays between 10 AM and noon. Evening hours are on the second and fourth Tuesday of the month between 5:30 PM and 7 PM.

The food pantry will close when Arrowhead Schools close for inclement weather. It will reopen the following week weather permitting.



PARISH SUPPORT FOR THE WEEKEND OF NOVEMBER 21 ST

FISCAL YEAR JULY 1 THRU JUNE 30

2021-2022	
Envelopes.....	\$45,224.84
Offertory.....	\$1,790.70
Weekend Total	\$47,015.54
E-Giving	\$10,461.25
YTD	\$743,462.78

2020-2021	
Envelopes.....	\$44,944.50
Offertory.....	\$366.03
Weekend Total	\$45,310.53
E-Giving	\$10,869.10
YTD	\$699,452.70

PARISH SCHOOL CELEBRATING THE SEASON



EVENTS & NEWS AT ST. CHARLES PARISH SCHOOL

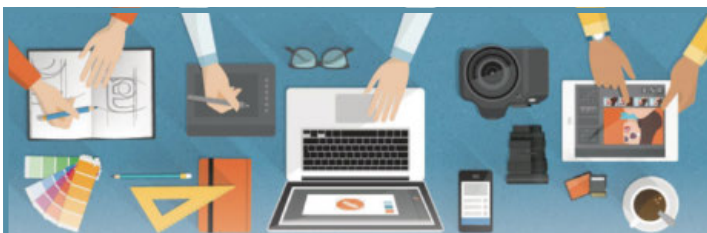
ARE YOU INTERESTED IN SUPPORTING OUR SCHOOL?

We would love your help! Please prayerfully consider donating to our Annual Development Fund (ADF).

Are you wondering what the ADF is? It helps bridge the gap between the actual cost to educate a child at St. Charles School and the current tuition. Annually, about 10% of our families receive assistance with tuition. This number may increase in the future as families face financial hardships. We want to ensure that all students are able to attend St. Charles no matter their family's financial situation.

We are hoping to reach our goal of \$50,000 by the end of June. We have currently raised nearly \$11,000 and are so appreciative of your generosity!

Thank you for continuing to support the mission of St. Charles Parish School!



DO YOU LOVE TO BE CREATIVE?

Is photography a hobby? Are you a writer? Do you enjoy graphic design? We would love your help on our Marketing Committee! Our parish and school loves welcoming new members, and we are constantly working on new approaches to spread the news about St. Charles in our community. Please contact Allison Caswell, Communications Specialist, at 262-367-2040 or acaswell@stcharleshartland.org if you are interested and/or if you have any questions.

SCHOLA CHOIR SPREADING JOY!

The St. Charles Schola performed at a Christmas Party in Hartland on December 18. After singing their concert, they enjoyed carriage rides through downtown Hartland and then went door to door in the neighborhood sharing the beauty of their music. A joyous time was had by all, and it was beautiful to see the surprise and appreciation on people's faces as this random act of kindness brought the Christmas spirit to their doorsteps. Thank you to all of the Schola Moms who chaperoned and helped make this trip possible!



5TH GRADE FIELD TRIP

Our 5th Graders recently went to the Mitchell Park Domes for a field trip! Students received a guided tour to learn more about pollinators and plants, which they learned about in class. Students had a wonderful time exploring the Domes!





**SCHOOL
OPEN HOUSE
JANUARY 23**



COME SEE OUR SCHOOL!

**Our annual Open House will be on
Sunday, January 23 from 10 am to 1 pm**

Stop by after Mass to check out our classrooms, meet with teachers and Principal Garvey, and speak with current parents. This is a wonderful opportunity to take a tour of our school and consider it for your family for the 2022-2023 school year! Please visit our website for more information and to register for a tour. Walk-ins are also welcome!



Steve & Joyce BERGELIN
www.SteveandJoyceBergelin.com



REALEXECUTIVES
INTEGRITY
(262) 424-8753



TODD WANGERIN ELECTRIC, Inc.
Free Estimates - Licensed - Insured
Over 20 years experience
Todd Wangerin 262-719-4411
twelectric4411@att.net

www.hhortho.com
Holzauer, Hewett & Barta s.c.
Orthodontic Care For Children And Adults
Daniel Holzauer DDS MS | Charles Hewett DDS MS | Joshua Barta DDS MS
520 Hartbrook Dr., Hartland 262-567-7076
2316 N. Grandview Blvd, Waukesha 262-547-6365
10225 W. Capitol Dr., Wauwatosa 414-463-5700

Oconomowoc Landscape Supply & Garden Center
Landscaping Supplies • Annuals
Perennials • Trees & Shrubs
Increase your Homes Value Enjoy a Beautiful Landscaped Yard
262-567-1777
www.olandscape.com • Corner of K & 67 at bypass



Hartland Terrace Assisted Living
• RN Lead 24-Hour Elite Care Team
• Full Continuum of Care • Memory Care
• All Inclusive Pricing • Private Studios
• Family Centered Care Model
327 North Avenue • Hartland | 262-369-4391
www.hartlandterrace.com

Complete line of Hispanic & American Groceries.
We specialize in fresh corn tortillas, Mexican bakery and our famous El Rey Tostadita Chips.
Serving Milwaukee Since 1978
El Rey Family Market 3520 W. Oklahoma Ave. 414-943-1940
El Rey Plaza 3524 W. Burlington St. 414-941-5200
El Rey Food Mart 1325 W. Burlington St. 414-943-1816
El Rey Food Mart 916 S. Cass St. 414-388-7786

www.hhortho.com
Holzauer, Hewett & Barta s.c.
Orthodontic Care For Children And Adults
Daniel Holzauer DDS MS | Charles Hewett DDS MS | Joshua Barta DDS MS
520 Hartbrook Dr., Hartland 262-567-7076
2316 N. Grandview Blvd, Waukesha 262-547-6365
10225 W. Capitol Dr., Wauwatosa 414-463-5700

BUNZEL'S OLD FASHIONED MEAT MARKET
Fresh Custom Cut Choice Meats
Party Trays • Catering
Thank You For Supporting A Family Tradition
9015 W. BURLEIGH 873-7960
www.bunzelmeats.com



30 YEARS OF EXCELLENCE
Pat's Heating & Air Conditioning
262-567-7499
OCONOMOWOC
www.patsheating.com



FOOT & ANKLE Associates of Wisconsin
Parish Member
Dr. Amy Galati
Call: (262) 542-3779
www.footandanklewi.com

FREE AD DESIGN
WITH PURCHASE OF THIS SPACE
CALL 800.950.9952



KOWAL INVESTMENT GROUP
The Retirement Specialists
Aaron T. Kowal, CFP®
W238N1660 Busse Rd., Ste. 100, Waukesha, WI 53188
262-522-4040
www.kowalinvestmentgroup.com

Henry & Diane Barwinski, Co-Owners
ECHO LAWN
A Complete Lawn, Landscape, and Snow Removal Service
Milwaukee 414-462-6670
Lake Country 262-695-8152

www.hhortho.com
Holzauer, Hewett & Barta s.c.
Orthodontic Care For Children And Adults
Daniel Holzauer DDS MS | Charles Hewett DDS MS | Joshua Barta DDS MS
520 Hartbrook Dr., Hartland 262-567-7076
2316 N. Grandview Blvd, Waukesha 262-547-6365
10225 W. Capitol Dr., Wauwatosa 414-463-5700



Hartland Family CHIROPRACTIC
211 Cottonwood Ave, Hartland (262) 367-7424
www.hartlandchiro.com

NEVER MISS A BULLETIN !
Sign up to have our weekly parish bulletin emailed to you at www.parishesonline.com



WE'RE HIRING
AD SALES EXECUTIVES
BE YOURSELF. BRING YOUR PASSION. WORK WITH PURPOSE.


- Work-Life Balance
- Full-Time with Benefits
- Paid Training
- Some Travel

Contact us at careers@4lpi.com
www.4lpi.com/careers

TOWN BANK
AWINTRUST COMMUNITY BANK
800-433-3076
www.townbank.us



701 Industrial Ct., Hartland
262-367-5800



R&R INSURANCE
Rick Kalscheuer
Parish Member
800.566.7007 | MyKnowledgeBroker.com



support our ADVERTISERS



MICHAEL J. FINN S.C.
ATTORNEY AT LAW
PARISH MEMBER
262-367-8485
mjfinnsc@sbcglobal.net
163 E. Capitol Dr., Hartland, WI 53029

VISU-SEWER, INC.
262-695-2340
Professional Sewer Inspection, Maintenance and Rehabilitation Services
Parish Members
www.visu-sewer.com

DON CULL EXCAVATING
W298 N9248 Center Oak Rd
Septic & Mound Systems Grading
966-7038
MPRS 221589



CHARLES SL
St. Charles School... We choose Christ in learning, living, & values in the light of our faith.
262-367-2040
www.stcharlesschoolhartland.com

JENSON MOTORS
Auto - Truck Repair
Hours: Mon-Fri 7:30-5:30
Proprietor: Guy Jenson
262-367-5556
364 Cottonwood Ave., Hartland, WI

SUPPORT OUR ADVERTISERS!

We've Missed You!
Welcome Back to Mass



Stay connected to our faith community no matter where you are by signing up to get our bulletin delivered straight to your email
www.ParishesOnline.com

AVAILABLE FOR A LIMITED TIME!
ADVERTISE HERE NOW!

Contact **Jeff Tkachuk** to place an ad today! jtkachuk@4LPi.com
or (800) 950-9952 x2513

KLINK'S KARPETS, INC
Hartland's Floor Covering Center
Family Owned & Operated for over 47 Years
Carpeting & Hard Surfaces
107 North Ave. Hartland, WI
367-4670 Parish Member




DAVE PERRY
heating • cooling
Proudly Serving the Lake Country Area for more than 20 years
Heating • Air Conditioning • Geothermal New Construction • Replacement
262.966.1959
www.daveperryheatingandcooling.com




SPRUNG
Heating, Sheet Metal & Well Pump Service
7024 Main St., Merton
538-1400
Service • Repair & New Construction
Residential & Commercial
Parish Members



Lake Country Eye Care
580 Westbrook Dr. • Hartland, WI 53029
Amber A. Dentz, OD - Parishioner
www.lakecountryeyecare.com
262-367-6610




Generations DENTAL
Jim Muenzenberger, D.D.S.
and Kelly Newman, D.D.S.
Parish Members
130 E. Capitol Dr. Hartland, WI 53029
Office 262-367-2750
GenerationsDentalHartland.com



www.Palmersteakhouse.com
122 E. Capitol Dr. • Hartland, WI
262-369-3939

UnitedDrivingSchoolWI.com
ENROLL TODAY!




DUNN
INVESTMENT MANAGEMENT GROUP
of RBC Wealth Management
James P. Dunn
Managing Director - Financial Advisor
Senior Portfolio Manager - Portfolio Focus
james.dunn@rbc.com

18500 West Corporate Drive, Ste. 100
Brookfield, WI 53045
Call (262) 395-1101 for an appointment

- Customized portfolio management & investment consulting for individuals & institutions
- Comprehensive Investment advice & retirement planning
- Recently retired or changed jobs? Providing specialized 401K rollover solutions

A Division of RBC Capital Markets LLC NYSE/FINRA/SIPC

The Mobile Repair Guys
"Your small engine maintenance & repair specialists!"
Home-Service LLC

Small Engine Maintenance and Repair

Specializing in Lawn Mowers & Snow Blowers

WE COME TO YOU AT NO EXTRA COST

414-617-3490

Lake Country Home Realty


Jim Lotz
262.312.8603
M.S.
Jim@LakeCountryHomeRealty.com
www.LakeCountryHomeRealty.com

It's Time to Travel Again!



CZ Travel
Kristin Walsh
kristinczwalsh@gmail.com
www.CZtravel.org

REICHL & KOLSTAD
ORTHODONTICS



Dr. Peter Reichl & Dr. James Kolstad
look forward to meeting you!

Offering Traditional Braces & Invisalign

Located in Waukesha, Mukwonago & Hartland

262-547-2827

www.ReichlKolstadOrtho.com

WEALTHSPIRE
ADVISORS

Brion Collins
CFP® Professional & Parishioner
262.326.6090 | www.wealthspire.com

We salute the St. Charles community and all who make such a profound difference.



Wealthspire Advisors is the common brand and trade name used by Sunray Advisory LLC and Wealthspire Advisors, LP, separate registered investment advisors and subsidiary companies of NFP Corp. Securities, when offered, are offered through an affiliate, Wealthspire Capital, LLC member FINRA/SIPC. Certified Financial Planner Board of Standards Inc. (CFP Board) owns the CFP® mark in the United States.

What Will Be Your Legacy?

If you value your faith and your family, I welcome the opportunity to share my faith-based perspective in union with my financial experience in order to co-create a personal legacy strategy. I can assist with: Portfolio Management | Retirement Planning | Financial & Legacy Strategies | Special Needs Planning



Kurt Maltby, CFP®, CHSNC®
CERTIFIED FINANCIAL PLANNER™
Associate Vice President, Financial Advisor

Morgan Stanley
20975 Swenson Drive, Waukesha
Phone: (262) 523-8303 | NMLS # 1504808
advisor.morganstanley.com/the-riverwood-wealth-management-group

Morgan Stanley and its Financial Advisors do not provide tax or legal advice. Individuals should seek advice based on their particular circumstances from an independent tax advisor.
Morgan Stanley Smith Barney LLC. Member SIPC. ©2014-04-04

CARPET PLUS, INC.
We Bring the Showroom to You!
(414) 573-0105
Proudly Serving Crusader Nation for over 20 years!
Dan Taylor, Parish Member

EVERT-LUKO FUNERAL HOME
Family Helping Family
262-367-2156

PASSAGES
Cremation Service
www.evertlukofuneralhome.com

ANTHONY THOMAS BUILDERS INC.

From Lakeshore to Traditional or Contemporary, we build YOUR home for you!



Custom Homes | 30 Years Experience | High Quality | Design & Build | Land Selection

Contact Anthony Federspill at tonyatb@gmail.com | 414-520-8884
Visit our website www.anthonymthomasbuilders.com

COURI INSURANCE AGENCY

Protection for the Unexpected™

Coverages IMPORTANT Pricing IMPORTANT Low Costs GREAT COVERAGES

Jerry & Judie Couri
262-548-8077 • couri.com

H+P CERTIFIED PUBLIC ACCOUNTANTS

Mark G. Hayes, CPA
262-367-5505 • 262-367-0545 Fax
365 Cottonwood Ave., Suite A • Hartland, WI 53029
mark@hpcpa.tax • www.hpcpa.tax

George & Meredith Raab

Don't pay 6% or more in commission when we provide the same full service for 3.95%, saving you THOUSANDS!

262-370-7998
welketosellhomesforless@gmail.com
welketosellhomesforless.com | T3realtlyllc.com

SPORTS GRILL

PIZZA • FRIDAY FISH FRY • SANDWICHES
*\$5.00 OFF ANY 16" PIZZA
*SUNDAY'S "KIDS EAT FREE" WITH ADULT PURCHASE
We do Parties & Catering!
Not valid with any other offers or coupons
369-0079
300 COTTONWOOD • HARTLAND
PARISH MEMBER

Emanuele & Haut, CPAs, SC
Certified Public Accountants
Emanuele-Haut certified public accountants
142 E. Capitol Dr. Hartland, WI
Parish Member
262.367.1040
sam@ehcpas.com

Integré Professional Services
Handyman Parishioner
Michael Hall 262-239-5052 cell
integrepofs@gmail.com

Wolf Electric LLC
Commercial, Industrial, Residential
Garrett Wolf • Master Electrician/Parishioner
Commercial • Industrial • Residential
(262) 224-7310 • www.wolfelectricllc.com

Angela Isherwood
Owner & Luxury Travel Designer
Parishioner
262.229.9271
Angela@OliveAndAtlasTravel.com
www.OliveAndAtlasTravel.com

AVAILABLE FOR A LIMITED TIME!
ADVERTISE HERE NOW!
Contact **Jeff Tkachuk** to place an ad today!
jtkachuk@4LPI.com or (800) 950-9952 x2513

GOOD TIMES DAY CAMP
262-521-8100 • WWW.GOODTIMESWI.COM

Where happiness and wonderment come to play!

- Now Enrolling Ages 3 - 15
- 15 Acres & 2 Heated Pools
- Many Athletic Fields
- Swimming Lessons Included
- Field Trips Included
- Bussing to/from Hartland
- Bussing to/from Brookfield
- Worry Free Scheduling
- Low Ratio's
- Accepting Counselor Applications

Where challenges are met, goals are accomplished, and friendships and memories made last a lifetime!



PAUN Construction

Specializing in Masonry Residential & Commercial
W300 N7741 Christine Ln., Hartland, WI 53029
Robert J. Paun (262) 326-8043
www.paunconstruction.com
mail@paunconstruction.com

Please Support these
CONTRACTORS
Thank You to these contractors helping St Charles grow!



NELCO ELECTRIC, INC.
GERMANTOWN, WI
Commercial • Industrial • Residential
24 Hour Service 262-502-9950
WWW.NELCOELECTRIC.COM
Barb Jarchow Parishioner

zimmerman
ARCHITECTURAL STUDIOS, INC.
260 West Mt. Vernon Avenue
Milwaukee, WI 53212 | zimmerman.com
TELEPHONE (414) 478-9300
FAX/EMAIL (414) 478-9304

Vicki Marciniak
When it comes to your home, it's more than just business, it's personal.
Cell: (414) 243-5584
vmarciniak@firstweber.com
www.VickiMarciniak.FirstWeber.com

Frontier
TITLE & CLOSING SERVICES
1130 James Drive, Hartland, WI 53029
Office: 262-361-4466 Fax: 262-361-4462
www.frontiertitlellc.com
Frontier Title & Closing Services, LLC
Lake Country's Most Experienced Title & Closing Company
Specializing in Residential, Commercial & New Construction Transactions
Serving the Real Estate Community!

Lifetime Door Co
GARAGE DOORS • DOOR OPENERS • REPAIRED OR REPLACED
SALES • SERVICE • INSTALLATION
262-567-9203

Frontier
TITLE & CLOSING SERVICES
1130 James Drive, Hartland, WI 53029
Office: 262-361-4466 Fax: 262-361-4462
www.frontiertitlellc.com
Frontier Title & Closing Services, LLC
Lake Country's Most Experienced Title & Closing Company
Specializing in Residential, Commercial & New Construction Transactions
Serving the Real Estate Community!