

# January 2, 2022 The Epiphany of the Lord



Saint  
Bernadette  
Catholic Church



SMA  
Saint Mary Academy

## Prelude

1. We three kings of Orient are;  
Bearing gifts, we traverse afar  
Field and fountain,  
Moor and mountain,  
Following yonder star.  
**REFRAIN**

### REFRAIN

**O star of wonder, star of night,  
Star with royal beauty bright,  
Westward leading,  
still proceeding,  
Guide us to the perfect Light.**

## We Three Kings

2. Born a King on Bethlehem's plain,  
Gold I bring to crown him again;  
King forever,  
Ceasing never,  
Over us all to reign.  
**REFRAIN**

3. Frankincense to offer have I;  
Incense owns a Deity night;  
Prayer and praising,  
Gladly raising,  
Worshiping God on high.  
**REFRAIN**

## Hopkins

4. Myrrh is mine: its bitter perfume  
Breathes a life of gathering gloom;  
Sorrowing, sighing,  
Bleeding, dying,  
Sealed in the stonycold tomb.  
**REFRAIN**

5. Glorious now behold him arise,  
King and God and Sacrifice:  
"Alleluia, Alleluia!"  
Sounds through the earth and skies.  
**REFRAIN**

## Gathering Song

## As with Gladness Men Of Old

## Dix, Kocher, & Monk

1. As with glad-ness men of old Did the guid-ing  
2. As with joy-ful steps they sped To that low-ly  
3. As they of-fered gifts most rare At that man-ger

star be-hold; As with joy they hailed its light,  
man-ger-bed, There to bend the knee be-fore  
crude and bare; So may we this ho-ly day,

Lead-ing on-ward, beam-ing bright; So, most gra-cious  
Him, whom heav'n and earth a-dore; So may we with  
Drawn to you with-out de-lay, All our cost-liest

Lord, may we Ev-er-more your splen-dor see.  
hur-ried pace Run to seek your throne of grace.  
treas-ures bring, Christ, to you, our heav'n-ly King.

**Gloria**

**Mass of Christ the Savior**

**Schutte**

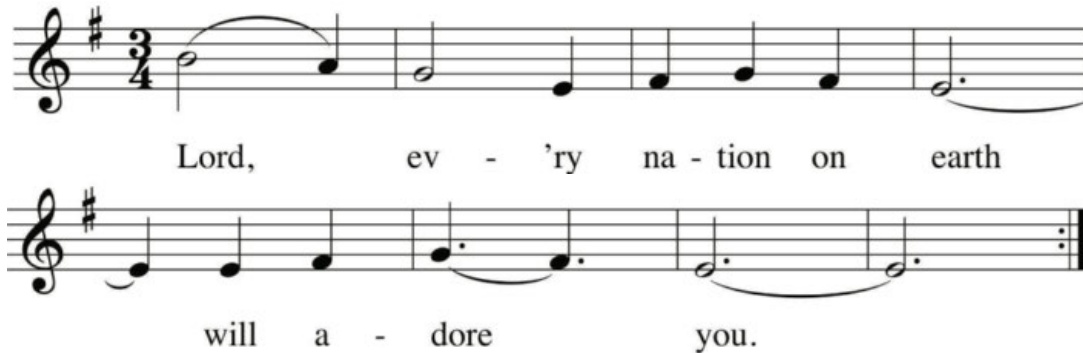
**First Reading**

**Isaiah 60:1-6**

**Responsorial Psalm**

**Ps 72**

**Pishner**



Lord, ev - 'ry na - tion on earth  
will a - dore you.

Text: Psalm 72:1-2, 7-8, 10-11, 12-13. The English translation of the Psalm Response from the Lectionary for Mass © 1969, 1981, 1997, International Commission on English in the Liturgy Corporation. All rights reserved. Psalm verses Copyright © 2010 Conception Abbey/The Grail, admin. by GIA Publications, Inc. All rights reserved. Tune: Stephen Pishner (based on KINGS OF ORIENT). Copyright © 2013, by GIA Publications, Inc., Chicago. All rights reserved. Reprinted under OneLicense.net, #A-702365.

**Second Reading**

**Ephesians 3:2-3a, 5-6**

**Gospel Acclamation**

**Mass of Christ the Savior**

**Schutte**

**Gospel**

**Matthew 2:1-12**

**Nicene Creed**

I believe in one God,  
the Father almighty,  
maker of heaven and earth,  
of all things visible and invisible.

I believe in one Lord Jesus Christ,  
the Only Begotten Son of God,  
born of the Father before all ages.  
God from God, Light from Light,  
true God from true God,  
begotten, not made,  
consubstantial with the Father;  
through him all things were made.  
For us men and for our salvation  
he came down from heaven,  
**[At the words that follow, up to and including and  
became man, all bow.]**  
and by the Holy Spirit was incarnate of the Virgin  
Mary, and became man.

For our sake he was crucified under Pontius Pilate,

he suffered death and was buried,  
and rose again on the third day  
in accordance with the Scriptures.  
He ascended into heaven  
and is seated at the right hand of the Father.  
He will come again in glory  
to judge the living and the dead  
and his kingdom will have no end.

I believe in the Holy Spirit,  
the Lord, the giver of life,  
who proceeds from the Father and the Son,  
who with the Father and the Son  
is adored and glorified,  
who has spoken through the prophets.

I believe in one, holy, catholic and apostolic Church.  
I confess one Baptism  
for the forgiveness of sins and I look forward to the  
resurrection of the dead  
and the life of the world to come. Amen.

Excerpts from the English translation of *The Roman Missal* © 2010, International Commission on English in the Liturgy Corporation. All Rights Reserved.



**LIKE & FOLLOW**  
our parish on Facebook

**For DAILY Catholic Content  
and parish announcements**  
[www.facebook.com/SaintBernadetteLouisville/](http://www.facebook.com/SaintBernadetteLouisville/)

# Preparation of Gifts

# The First Nowell

# Traditional



1. The first No - well the an - gel did say Was to  
 2. They look - ed up and saw a star Shin - ing  
 3. And by the light of that same star Three  
 4. This star drew nigh to the north - west, O'er  
 5. Then en - tered in those wise men three, Full  
 6. Then let us all with one ac - cord Sing



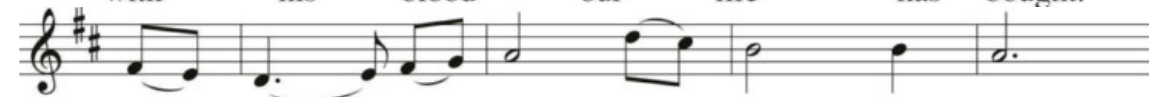
cer - tain poor shep - herds in fields as they lay; In  
 in the east be - yond them far; And  
 wise men came from coun - try far; To  
 Beth - le - hem it took its rest; And  
 rev - 'rent - ly up - on their knee, And  
 prais - es to our heav - 'nly Lord, Who



fields where they lay keep - ing their sheep, On a  
 to the earth it gave great light, And  
 seek for a king was their in - tent, And to  
 there it did both stop and stay Right  
 of - fered there in his pres - ence Their  
 made the heav'ns and earth of naught, And



cold win - ter's night that was so deep.  
 so it con - tin - ued both day and night.  
 fol - low the star where - ev - er it went.  
 o - ver the place where Je - sus lay.  
 gold and myrrh and frank - in - cense.  
 with his blood our life has bought.




No - well, No - well, No - well, No - well!




Born is the King of Is - ra - el.

Text English Carol, 17th C. Tune: THE FIRST NOWELL, Irregular; English Melody; harm. From *Christmas Carols New and Old*, 1871



**NEXT SUNDAY, JANUARY 9th at 12pm**

**Please help us with taking down and storing our Christmas decorations. We could use any amount of time you are able to offer! Meet at the foot of the altar at the end of Mass. Thank you!**



We will sing *Mystery of Faith*, Option 2

When we eat this Bread and drink this Cup, we proclaim your Death, O Lord, until you come again.

The English translation of The Roman Missal copyright © 2010, ICEL. All rights reserved.

**Communion Song**

**Wood of the Cradle**

**O'Brien**

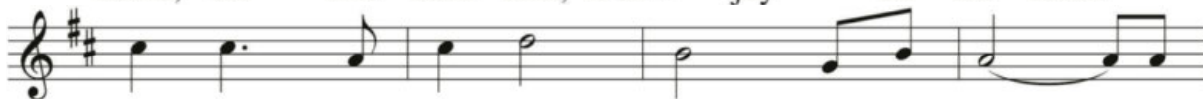
Verses



1. Wood of the cra - dle, wood of the cross,  
2. Shep - herds lie sleep - ing, deep in their dreams;  
3. Star in the heav - ens bear - ing new light,  
4. Come, all who hun - ger, come, all who thirst;



bear - ing a life - time of joy and of loss,  
an - gels a - wak - en them. "What could this mean?  
guid - ing the sag - es and a - ges this night:  
come, all who seek him, God's joy on the earth.



who is your loved one? Who could he be, 7  
Whom do you her - ald? Whom must we find? A  
Where will you lead us? Where can he be, the  
Find him a shel - ter, bright, safe, and warm; 7



born in a man - ger to die on a tree?  
child in a man - ger? Our God born in time?"  
child born of mys - t'ry who died on a tree?  
see in all peo - ple his love be - ing born.

Refrain



This, this is Je - sus the Lord, here in the bod - y and

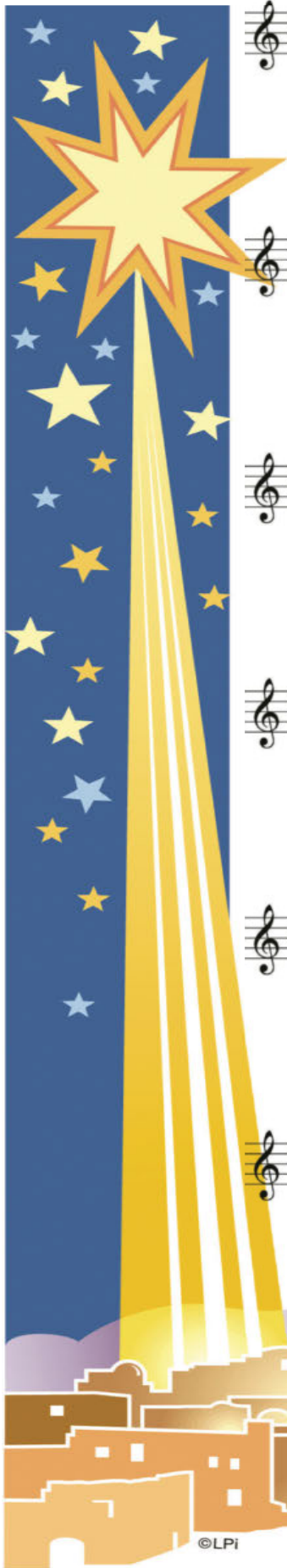


blood out - poured. Come, come, walk in his ways. Kneel at the



man - ger and rise from the grave.

Text and Tune: Francis Patrick O'Brien, b. 1958 © 2002, GIA Publications, Inc. All rights reserved. Reprinted under OneLicense.net, #A-702365.



1. Ev - 'ry na - tion sees the glo - ry Of a  
 2. Ev - 'ry tongue shall sing the prais - es Of his  
 3. Once a - gain may we dis - cov - er Word made  
 4. Gath - er, God, the world to - geth - er In the



star that pierced the night. As we tell the won-drous  
 birth in deep - est night. He is heal - ing for the  
 flesh sent from a - bove. In our neigh - bor, sis - ter,  
 bright - ness of your day. Fill our hearts with joy for -



sto - ry We are bathed in ra - dian't light.  
 a - ges; He is Christ, our God's de - light.  
 broth - er, In the lone - ly and un - loved.  
 ev - er; Help us walk the ho - ly way.



Star sent forth from high - est heav - en, Danc - ing  
 He pro - claims with - in his be - ing All our  
 May we touch him, may we hold him, May we  
 May your jus - tice rule the na - tions; May all



light of God's de - sign, Shine up - on the gift that's  
 hopes, our great de - sires. He shall die to rise, re -  
 cra - dle him with care As we learn to love each  
 peo - ple live as one. Now we see our true sal -



giv - en: Word made flesh now born in time.  
 deem - ing All who fol - low with their lives.  
 oth - er, Bring - ing hope from out de - spair.  
 va - tion In the glo - ry of your Son.

©LPI

## GOSPEL MEDITATION

### ENCOURAGE DEEPER UNDERSTANDING OF SCRIPTURE

In his Apostolic Exhortation, *The Joy of the Gospel*, Pope Francis references a thought from Pope Benedict XVI: "Being a Christian is not the result of an ethical choice or a lofty idea, but the encounter with an event, a person, which gives life a new horizon and a decisive direction." Today we celebrate an encounter with the Person of Jesus Christ! This simple but holy event in time dramatically changes human life, pointing it toward a new horizon and giving it a decisive direction. This is a message and truth that is not meant to be shared with only a select few who qualify but with the entire world. Pope Francis continues saying, "Thanks solely to this encounter or renewed encounter with God's love, which blossoms into an enriching friendship, we are liberated from our narrowness and self-absorption. We become fully human when we become more than human, when we let God bring us beyond ourselves in order to attain the fullest truth of our being."

Look around at people. Where is life heading for them? What gives them direction? Even we who are people of faith can



get distracted and lose our focus. God, in all of His fullness, is revealed in Jesus Christ and we can encounter Him! God is tangible, real, vulnerable, poor, and full of wonders, surprises, and opportunities. For those who are struggling and lost, today is a day of great joy. All they have to do is reach out and touch the truth of Christ. This presence is revealed in the poor, exploited, and vulnerable ones who cry out for compassion and love. But it is also found in the faithful ones who see in the Epiphany of God a liberation from structures and systems that hurt us, a narrowness of

mind and heart that constricts us, and an absorption in our self-agenda that prevents us from seeing anything other than ourselves as important.

We have been given the charge of preaching this Good News. If only we could find a way to be more effective, it might stand a chance of doing what God intended it to do. There is always tomorrow and our memory of that bright new light that shone so brilliantly that Bethlehem night pointing us to truth and reminding us that we are loved.

*"And you, Bethlehem, land of Judah, are by no means least among the rulers of Judah; since from you shall come a ruler, who is to shepherd my people Israel."*

- Mt 2:6

Excerpts from the Lectionary for Mass ©2001, 1998, 1970 CCD.



JANUARY 2, 2022

©LPI

# THIS WEEK AT OUR PARISH

## Sunday, January 2

9:45am.....ABB (Adult Bible Background) ..... Lourdes Rm

**9:45am.....NO G.I.F.T. Classes**

6:00pm.....Men's Basketball League ..... SMA

## Monday, January 3 ..... PARISH CENTER CLOSED

**SMA Classes Resume**

8:15am.....Mass (Rosary).....Church & Online

3:00pm.....Centering Prayer..... Chapel

6:30pm.....Boy Scouts..... Soubirous Rm

## Tuesday, January 4

12:00pm....Mass (Rosary).....Church & Online

12:30pm—7:30pm...Adoration ..... Church

6:00pm—7:30pm...Confession..... Church

6:30pm.....Knights of Columbus.....Fr. McGivney Rm

## Wednesday, January 5

6:00am.....Men's Boot Camp..... Soubirous Rm

8:15am.....Mass (Rosary).....Church & Online

5:00pm.....Children's Choir ..... Church

5:45pm.....Youth Choir ..... Church

6:00pm.....Baptism Prep Class.....Fr. McGivney Rm

## Thursday, January 6

8:00am.....Women's Ministry..... Soubirous Rm

8:15am.....SCHOOL Mass.....Church & Online

9:00am.....Rosary.....Chapel

6:30pm.....Pastoral Council Mtg.....John Paul II Rm

6:30pm.....Youth Ministry.....Grotto Rm

7:00pm.....Women's Ministry..... Soubirous Rm

7:00pm.....Communion Minister Training.....Church

7:00pm.....ACE (Adult Christian Enrichment).....Online

## Friday, January 7

8:15am.....Mass (Rosary).....Church & Online

10:00am... ACE (Adult Christian Enrichment).....Online

3:00pm.....Daisy Troop (2403) ..... St. Cecelia Rm

3:00pm—6:00pm.....Vaccine Clinic.....Soubirous Rm

## Saturday, January 8

**7:30am—12:30pm...Blood Drive.....SMA Cafeteria**

10:00am....Women's Book Club ..... Soubirous Rm

12:00pm.....25<sup>th</sup> Anniversary Renewal..... Chapel

4:00pm.....Mass .....Church & Online

## Sunday, January 9

8:00am.....Rosary ..... Chapel

8:30am.....Mass .....Church & Online

9:45am.....ABB (Adult Bible Background) ..... Lourdes Rm

**9:45am.....G.I.F.T. Classes Resume.....SMA**

11:00am....Mass.....Church & ONLINE

12:00pm....RCIA.....Chapel

6:00pm.....Men's Basketball League .....SMA

# MASS INTENTIONS

Saturday, January 1

**9:00am Parishioners of Saint Bernadette**

**4:00pm Nicholas Buckler and Clay Keibler**

Sunday, January 2

**8:30am Parishioners of Saint Bernadette**

**11:00am Mary Roos**

Monday, January 3

**8:15am Purita dela Cruz**

Tuesday, January 4

**12:00pm Jean Newman Haywood**

**Cory & Cely Abad\***

Wednesday, January 5

**8:15am Margaret Ann Bryan and Clay Keibler**

Thursday, January 6

**8:15am Steven & Teresa Kiefer\***

Friday, January 7

**8:15am Oropilla Family Wedding\***

Saturday, January 8

**4:00pm Parishioners of Saint Bernadette**

Sunday, January 9

**8:30am Arthur Beck and Margaret Carrico**

**11:00am Clay Keibler and Mary Roos**

Please call Tina @ 815-3102 if you would like to make a special Intention for a Mass. The usual stipend for a Mass Intention is \$10 to support the work of the Parish.

\*Indicates intentions are for those still living.



*In Memoriam*

**PLEASE PRAY FOR**

**Celina Fields**, wife of Joseph;  
mother of Lara and Jana

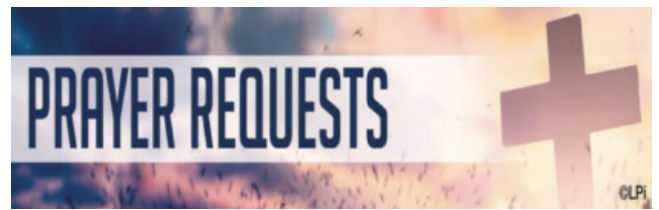
**Nellie Stahlman**, mother of Brian (Andrea)  
Stahlman; grandmother of Zach, Nick,  
and Luke



Amount Collected 12/19/21 \$ 20,185  
 Collected through WeShare Online \$ 41,284  
**Total Collected 12/19/21 \$ 61,469**

**\*Note: The majority of online WeShare donations are made on the 15th of the month.**

Year to Date Actual as of 11/30/21 \$ 670,841  
 Year to Date Budgeted as of 11/30/21 \$ 694,949



Please remember all those who are ill in our parish and: Tasso Katselas, Julia Leopold, Ronald Bennett, Yvonne Seibert, Steve Clement, Robert Runner, Connie Buehner, Liam Atherton, Maria and Arnett, Brooks Fuentes, Christina Malthouse, Kenneth Elmer, Maxine Stoehr, Joseph Butler, Jim Sauer, Ezra Shaffer, Fran Hughes, Robert Dennett, Jack Mayer, Ryan and Catherine Yacavoni, Debbie Benoit, Bruce Lane, Joyce Wise, Bob Quinlan, Lucy Todd, Debbie Wibbels, John and Susan Weber, Tom Toole, Deacon Jerry Buehner, Clint Crosley, Janice Finnegan, Raymond Lindle, Carole Howard, David Such, Dr. Owen Schmitt, Jeff Engledow, Sandy Holloway, Wilma Brown, Christy Judge, Ed Blecha, Leachman House, Ben Beer, David Coleman, Jim Whittaker, Alex Lhotsky, Christy Mattingly, June Merrifield, Tim Huval, and all of our men and women serving our country, all humanitarian endeavors including Peace Corps and AmeriCorps, for their safe return home. **IF YOU WOULD LIKE TO ADD SOMEONE TO THE LIST, PLEASE CALL THE PARISH @ 425-2210.**



Fr. Jeff, Fr. Pepper, Kelley Magnuson, and David Zorn would like to extend an especially big "THANK YOU" to all those involved with the music and art & environment for our Christmas Eve and Day celebrations this year. The Art & Environment Committee wonderfully transformed our narthex and worship space from the preparatory season of Advent to the joyous season of Christmas, and our singers, instrumentalists, cantors and accompanists supported our prayer and augmented our song with their beautiful music. I know all will want to join us in extending our gratitude to these wonderful stewards!

**FR. JEFF'S UPCOMING MILITARY SCHEDULE**

Guard Duty—January 8/9

Retreat—January 23—29



**Our Parish Target: \$170,100**

**As of 12/17/21: \$163,275**

**Our Participation Goal: 462 households**

**As of 12/17/21: 339 households**

Thanks to those who have already responded with a gift to the 2021 Catholic Services Appeal. Gifts can be made online at [www.ArchLou.org/CSA](http://www.ArchLou.org/CSA).

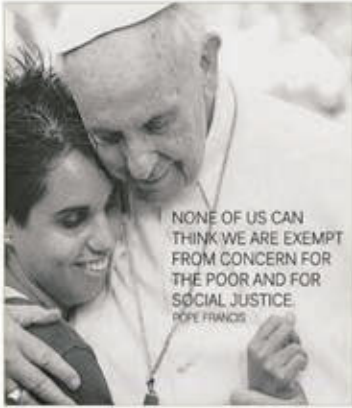


## Justice Workshop "Solidarity with the Poor"

Saturday, January 22, 2022

9:00 am – 4:00 pm

Cathedral of the Assumption Undercroft  
433 S. Fifth Street Louisville, KY 40202



This is an experiential workshop focusing on the Gospel call to serve the least in our community and to experience God in the poor.

*Note: This workshop requires walking and touring of local charitable agencies.*

Catechists credit: 7 hours credit applied toward Theology in the content area of Catholic Social Teaching

Preregistration is required.

Contact Lynn McDaniel at [lmcdaniel@archlou.org](mailto:lmcdaniel@archlou.org)  
or (502) 636-0296, ext. 1267.

Cost is \$25.00 (includes lunch). Make checks payable to ALMI.



Sponsored by the Archdiocese of Louisville  
Office of Faith Formation with the assistance  
of the Catholic Services Appeal.



In the new year, we will have 2 separate choirs rehearsing on Wednesday nights: Children's' Choir, Grades 3-5 (5-5:45pm) and Youth Choir, Grades 6-8 (5:45-6:30pm). These choirs will sing special preludes and lead worship at some of our Masses! For more info, contact Kelley Magnuson @ [kelleym@stb2008.org](mailto:kelleym@stb2008.org) or sign-up at [www.stb2008.org/youth-choirs](http://www.stb2008.org/youth-choirs)

## THINKING ABOUT SEPARATION OR DIVORCE?



**RETROUVAILLE**  
A LIFELINE FOR MARRIED COUPLES

**CAN HELP**

Next Weekend February 18-20, 2022

Go to [helpourmarriage.org](http://helpourmarriage.org) for more information, email [3012@retrouvaille.org](mailto:3012@retrouvaille.org), or call 502-479-3329

Is your marriage or that of a relative or friend heading for divorce? Do you know how to save that marriage? Or do you feel helpless? Retrouvaille (pronounced retro-vi with a long i) is designed to help troubled marriages regain their health. It helps spouses uncover or re-awaken the love, trust and commitment that originally brought them together. The program is highly successful in saving hurting marriages, even bringing reconciliation to couples who have already separated or divorced.

## From Grief to Healing

If you have lost a loved one then you know how much grief impacts your life. You do not have to navigate this alone. You are invited to a 10-week group process which will focus on the tasks of grief.

### Online / Zoom

Wednesdays 10:00 – 11:00 a.m.

**January 19 – March 23**

OR

### In-Person

Sundays 3:30 – 4:30 p.m.

(you are invited to stay for 5:00 Mass)

**January 23 – March 27**

### **St. Margaret Mary**

Sacred Heart Spirituality Center Living Room

Donation if able: \$11

Contact: Denise Ruiz at 426-1588 ext. 126 or

[druiz@stmm.org](mailto:druiz@stmm.org)

## DIVORCE *Care*

DivorceCare is a weekly seminar/support group that helps divorced or separated people heal from the hurt. It provides a warm, caring, and confidential environment in which participants can learn practical information and gain hope for the future.

**Weekly:** Tuesdays 6:30 – 8:30pm

**January 25 – April 26**

**Location:** St. Margaret Mary, 7813 Shelbyville Rd.

**Register:** To register and purchase the workbook go to [www.divorcecare.org](http://www.divorcecare.org)

If you already have a workbook there are no addition fees.

**Contact:** Denise Ruiz, 426-1588 ext. 126 or

[druiz@stmm.org](mailto:druiz@stmm.org)



## **DivorceCare for Kids**

DivorceCare for Kids, DC4K, provides a safe, fun place where your children will learn to understand their feelings, express their emotions appropriately, feel better about themselves and develop coping skills

**Weekly:** Tuesdays, 6:30 – 8:30 p.m.

**January 25 – April 26**

**Location:** St. Margaret Mary, 7813 Shelbyville Rd.

**Donation:** \$25

RSVP appreciated to Denise Ruiz at 426-1588 ext. 126 or [druiz@stmm.org](mailto:druiz@stmm.org)



## **BLOOD DRIVE**

The need is constant.  
The gratification is instant.  
**Give blood.**

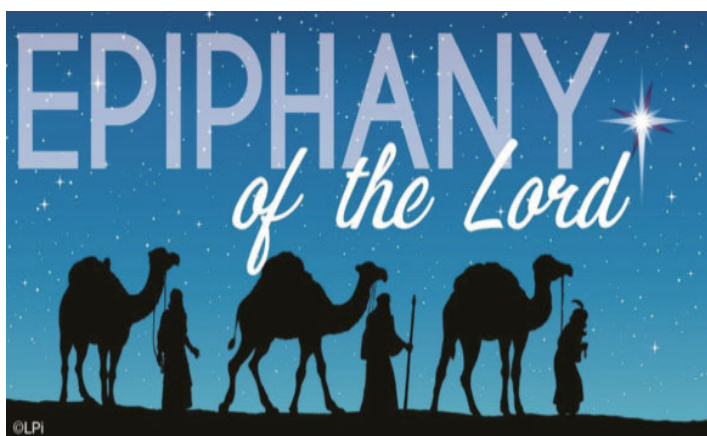
**SATURDAY, JANUARY 8<sup>TH</sup>**

**7:30AM–12:30PM**

**SAINT MARY ACADEMY  
CAFETERIA**

**TO SIGN-UP:** Go to [www.RedCrossBlood.org](http://www.RedCrossBlood.org). Search by sponsor keyword **StBernadette** then find **St. Mary Academy** and pick your time to donate. Contact Bill Blevins with the Red Cross at 609-7001 or parishioner, Rita Owens, at 387-7511 or [mthexprt@gmail.com](mailto:mthexprt@gmail.com) with any questions. If you'd like to volunteer to help at the event, contact Rita Owens.

Complete the Red Cross Rapid Pass Registration Form an hour before you arrive January 8<sup>th</sup> [RedCrossBlood.org/RapidPass](http://RedCrossBlood.org/RapidPass).



## HILDEGARD HOUSE SEEKING COMPASSIONATE COMPANIONS!



Hildegard House provides a home and compassionate care for individuals at the end of life who have no home or caregiver, so that they may die with dignity. Hildegard House is seeking volunteers to serve a weekly 5-hour shift to provide compassionate

care. **New volunteer training is Friday, January 14 from 6 to 8 p.m. and Saturday, January 15 from 9 a.m. to 4 p.m.** Please visit our website at [www.hildegardhouse.org](http://www.hildegardhouse.org) to sign up or call Jana McNally at 502-581-8267 for more information. Hildegard House is located at 114 Adams Street in the Butchertown neighborhood of Louisville.



Virtually every one of us will care for a loved one at some time in our life. Though rewarding, it's not always easy. Nourish for Caregivers is for anyone juggling the challenges of everyday life, health, career and caring for an aging parent, spouse or grandparent, in town or at a distance. Nourish provides caregivers a faith perspective, as well as practical and emotional supports, useful tools, and shared experience. Discover the blessings that come from caring for another. Be nourished.

This group will meet on the second Wednesday of the month from 7 - 8:30 p.m. If you want to join in person we will be at St. Margaret Mary in the Spirituality Center. If you are unable to join in person, you can participate by Zoom. Please register by emailing Denise Ruiz at [druiz@stmm.org](mailto:druiz@stmm.org), to receive the Zoom link or call at 690-2834 for more information.

## SACRAMENTS



### BAPTISM

Families wishing to have their child/children (infancy through age 7) baptized at Saint Bernadette, please complete an inquiry form online at [www.stb2008.org/baptism](http://www.stb2008.org/baptism)



### FIRST COMMUNION

To register a child to receive the sacrament of First Communion at Saint Bernadette, please call Elizabeth Auffrey @ 815-3108 and complete an online registration form at [www.stb2008.org/first-communion](http://www.stb2008.org/first-communion)



### CONFIRMATION

To register a child to receive the sacrament of Confirmation at Saint Bernadette, please call Elizabeth Auffrey @ 815-3108 and complete an online registration form at [www.stb2008.org/confirmation](http://www.stb2008.org/confirmation)



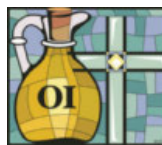
### Interested in Becoming Catholic?

If you are interested in learning more about the Catholic faith, contact Dr. Sharon Schuhmann at [sharons@stb2008.org](mailto:sharons@stb2008.org) or 815-3103 or inquire online at [www.stb2008.org/rcia](http://www.stb2008.org/rcia)



### MARRIAGE

Couples who wish to be married at Saint Bernadette should contact the parish office no less than six months before the proposed wedding date. To schedule a wedding at Saint Bernadette, please call Kelley Magnuson @ 815-3112.



### ANOINTING OF THE SICK

To schedule the Sacrament of Anointing of the sick before a medical procedure or in the event of a serious illness, call Nancy Falls @ 815-3106. When hospitalized, please notify the Parish Office (425-2210). In cases of medical **emergency** or **death**, please call 966-7829.



# TUITION ASSISTANCE FOR THE 2022/2023 SCHOOL YEAR



*At the Catholic Education Foundation, the Answer is Yes!*

The Catholic Education Foundation, the Archdiocese of Louisville and our funding partners are helping more families than ever who cannot afford the full cost of educating their children in a Catholic elementary school.

**WHO CAN APPLY?** All families with one or more children enrolled in or applying to a Catholic elementary school in the Archdiocese of Louisville.

**WHEN DO I APPLY? New Earlier Dates** - Tuition assistance applications should be submitted between **November 15, 2021 and January 31, 2022.**

**HOW DO I APPLY?** A single form, the FACTS management application, will be used for all types of Catholic elementary school tuition assistance. The online application is available on our website, [www.ceflou.org](http://www.ceflou.org).

When submitting your application, you must submit your **2020** federal income tax return and **2020** W-2 information.

**DO I APPLY EVERY YEAR?** Yes, you must apply for tuition assistance each year.

**WHEN WILL I KNOW IF I HAVE BEEN GRANTED TUITION ASSISTANCE? New Earlier Date** - Tuition assistance award notifications will be issued to families no later than **May 1, 2022.**

**ADDITIONAL INFORMATION**

- Completed applications received by January 31, 2022 will be considered in the initial grant awards. A smaller amount of tuition assistance may be available for forms submitted after that date.
- Complete only one FACTS application for your family, including all students in the family (elementary and high school) on the same form. FACTS will send a need evaluation to all funding sources for which each family could qualify as well as the schools you have listed on the form.

**WHAT IF I HAVE QUESTIONS?** Please call the FACTS parent help line at 1-866-315-9262 or visit us online at [www.ceflou.org](http://www.ceflou.org). We would be happy to assist you!



## ADULT FAITH FORMATION

Join us on Sundays from 9:45-10:45am for **ADULT BIBLE BACKGROUND** with Deacon Jim Shields in the Parish Center, Lourdes Room. Learn about the bible background of the Sunday readings. Contact Deacon Jim at [jims@stb2008.org](mailto:jims@stb2008.org) or at 423-7222 for more information.

The ministry of **EUCCHARISTIC ADORATION** offers the opportunity to all parish members to come and spend time before our Lord physically present in The Consecrated Host. Adoration before the exposed Blessed Sacrament takes place on Tuesdays, 12:30-7:30pm in Church.

The **ROSARY AND THE CHAPLET OF MERCY** is prayed in the Chapel weekdays following Mass and 8:00am before Sunday Masses.

We welcome you to join us on Mondays from 3:00pm—4:00pm for **CENTERING PRAYER** in the Day Chapel. Centering Prayer is a method of prayer in which we consent to rest in God's presence. For more information contact Vickie Speer at [speer.vickie@gmail.com](mailto:speer.vickie@gmail.com) or 267-4872.

**MEN'S LEADERSHIP BOOT CAMP** meets every Wednesday from 6:00-7:00am in the Parish Center, Soubirous Rm. This is a weekly gathering designed to help men develop as Catholic Christian leaders in their families, careers and beyond. For more information on the group contact Gary Montgomery at [coachgary@icanplay.com](mailto:coachgary@icanplay.com) or 423-9724.

**THE MEN'S MINISTRY** meets every Saturday from 8:00-9:30am in the Parish Center, Fr. McGivney Rm. The purpose of these gatherings is to provide a space for men to gather and discuss topics pertinent to their lives. For more information on the group contact Deacon Todd Auffrey at [todda@stb2008.org](mailto:todda@stb2008.org)




Adult Christian  
Enrichment Programs

Join us as we examine the ancient biblical cultures, peoples, places, and writings and explore the meaning and impact on our life of faith today.

Sessions on ZOOM  
Thursday 7:00pm—8:30pm  
OR  
Friday 10:00am—11:30am

Call Lynnette LeGette (502) 802-5966 to register (no fee) and receive the link to the class.

Jan. 06-07	Egyptian Culture
Jan. 13-14	Minoan & Mycenaean Culture
Jan. 20-21	Greek Culture
Jan. 27-28	Persian Culture



**DID YOU KNOW?**

January is human trafficking awareness month. Catholic Charities of Louisville is Kentucky's flagship program addressing human trafficking. Our Bakhita Empowerment Initiative last year provided service and care to 52 women and men exiting human trafficking, trained other professionals in addressing trafficking, and taught young people how to not be exploited. If you think you see trafficking, call the National Hotline at 888-373-7888.



You've got Word on Fire ENGAGE!

Your parish has given you complete access to Bishop Barron's Word on Fire ENGAGE video library! Visit [WoFDigital.org](http://WoFDigital.org) from Flocknote to watch any of the videos whenever you want without ever having to login.

Visit [WoFDigital.org](http://WoFDigital.org)

## PARISH INFORMATION

### PARISH CENTER

6500 St. Bernadette Avenue  
Prospect, KY 40059  
502-425-2210  
502-442-0065 Fax  
[www.stb2008.org](http://www.stb2008.org)

### AFTER HOURS EMERGENCIES

(A person near or in danger of death)  
502-966-7829

### OFFICE HOURS

Monday-Friday, 8:30am to 4:30pm

### WEEKDAY MASSES

Monday, Wednesday, Thursday, & Friday 8:15am  
Tuesday 12:00pm

### WEEKEND MASSES

Saturday 4:00pm  
Sunday 8:30am and 11:00am

### EUCCHARISTIC ADORATION

Tuesday 12:30pm–7:30pm

### RECONCILIATION

Tuesday 6:00pm–7:30pm  
Or by appointment



After each weekend Mass, Father invites anyone interested in parish membership to complete the "Inquiry Form" at the Kiosk in the Lobby.

You may also contact: Nancy Falls at [nancyf@stb2008.org](mailto:nancyf@stb2008.org) or 815-3106 or register online at [www.stb2008.org/im-interested-in-joining](http://www.stb2008.org/im-interested-in-joining)

As of 11/30/21 we have 2081 Registered Families, (6603 souls).

## OUR STAFF

**Pastor**.....Fr. Jeff Nicolas  
[frnicolas@stb2008.org](mailto:frnicolas@stb2008.org).....815-3107

**Deacon**, Jerry Buehner.....[jerryb@stb2008.org](mailto:jerryb@stb2008.org)

**Deacon**, Todd Auffrey.....[todda@stb2008.org](mailto:todda@stb2008.org)

**Deacon**, Jim Shields.....[jims@stb2008.org](mailto:jims@stb2008.org)

**Pastoral Associate for Intentional Discipleship**  
.....Dr. Sharon Schuhmann  
[sharons@stb2008.org](mailto:sharons@stb2008.org).....815-3103

**Mission Advancement Advocate**.....Nancy Falls  
[nancyf@stb2008.org](mailto:nancyf@stb2008.org).....815-3106

**Finance Manager**.....Angela Kerr  
[angelak@stb2008.org](mailto:angelak@stb2008.org).....815-3109

**Office Support Coordinator**.....Tina LaTulippe  
[tinal@stb2008.org](mailto:tinal@stb2008.org).....815-3102

**Bookkeeper**.....Missy Mattingly  
[missym@stb2008.org](mailto:missym@stb2008.org).....815-3111

**Director of Worship & Music**.....David Zorn  
[davidz@stb2008.org](mailto:davidz@stb2008.org).....815-3104

**Assistant Director of Worship & Music**  
.....Kelley Magnuson  
[kelleym@stb2008.org](mailto:kelleym@stb2008.org).....815-3112

**Director of Children's Formation**...Elizabeth Auffrey  
[elizabetha@stb2008.org](mailto:elizabetha@stb2008.org).....815-3108

**Neighbor Care Coordinator**.....Ellen Creely  
[ellenc@stb2008.org](mailto:ellenc@stb2008.org).....815-3101

**Youth Ministry**.....Dr. Sharon Schuhmann  
[sharons@stb2008.org](mailto:sharons@stb2008.org).....815-3103

**Facilities Manager**.....Rob Nicolas  
[facilities@stb2008.org](mailto:facilities@stb2008.org).....509-7843



### SAINT MARY ACADEMY

11311 Saint Mary Lane  
Prospect, KY 40059  
502-315-2555

[www.saintmaryacademy.com](http://www.saintmaryacademy.com)

**Julie Speer, Interim Principal**

**Limón y Sal**  
MEXICAN KITCHEN

502-423-4604  
10000 BROWNSBORO RD. 40241  
LIMONYSAL502.COM  
DINE IN • CARRY OUT  
WE CATER (TACO+FAJITA BAR)  
-PARISHIONERS-

**STUART GREEN LAW**

ESTATES // TRUSTS // TAX

2020 High Wickham Place, Suite 206  
Louisville, KY 40245  
stuart@stuartgreenlaw.com  
(866) 788-2784  
www.stuartgreenlaw.com



**LICHTEFELD INCORPORATED**  
908 S. 8th Street • Louisville, KY 40202  
502-589-4777

**Designing and Constructing**  
- Churches - Schools - Office - Warehouse  
- Medical - Dental - Automotive - Retail

**CALL:  
MARK LICHTEFELD**

Parish Member

**BUTTORFF**  
Historically Inspired Custom Homes  
243-0909



**COIT**  
CLEANING & RESTORATION SERVICES  
People you trust... trust Coit. www.coit.com

636-1401

Carpet & Area Rugs  
Upholstery • Draperies, Blinds  
& Window Coverings  
Tile, Grout, Stone & Wood Floor Care  
Air Duct Cleaning

24/7 Emergency  
Fire & Water Damage

**Jo Hall, Parishioner**

**LOS AZTECAS**



MEXICAN RESTAURANT

U.S. Hwy 42 - Prospect  
(502) 228-2450

Herr Ln - Lyndon  
(502) 426-3994

Dining • Carryout • Catering

Large Group Reservations Welcome!

**HOUSE of COLOUR**

**Meghan Tinker, Parishioner**

Color & Style Analysis, Personal Shopping, Wardrobe Cleanout  
502-439-6347 • meghan.tinker@houseofcolour.com  
houseofcolour.com



**Karem's Grill & Pub**

Louie Karem, Owner Ph: 327-5646  
9424 Norton Commons Blvd. • Prospect, KY 40059

**MEDLEY'S**

AUTO & TRUCK ALIGNMENT SERVICE, INC.  
"Since 1944"  
633 S. Campbell St. 3913 Shepherdsville Rd.  
Steve Medley 585-5391 • 459-5740

12314 Shelbyville Rd. 502-244-8606 • 1200 Gardiner Ln. 502-451-2600

**SAM KINNAIRD'S FLOORING**

Designers On Staff **FREE** In Home Estimates  
kinnairdsflooring.com

**Arch L. Heady & Son at Westport Village**

7410 Westport Road  
Louisville, Kentucky 40222  
(502) 426-9351

Arch L. Heady III,  
Chris L. Heady (Parishioner)  
Cody Phillips • Caleb Raymer  
Gregory Robertson

Your Pre-Arrangement Specialists  
Where Personal and Sincere  
Services Are a Tradition



www.archheadywestport.com



**Whitehouse**  
Residential & Commercial Painting Co.

(502) 425-0483  
www.whitehousepaint.com

**We've Missed You!**  
Welcome Back to Mass



Stay connected to our faith community no matter where you are  
by signing up to get our bulletin delivered straight to your email!

**www.ParishesOnline.com**

**Tea Station**  
Asian Bistro

502.423.1202  
9422 Norton Commons Blvd • Prospect, KY

**DRAPED IN STYLE**

Draped in Style has been serving clients since 2005.  
We specialize in residential and commercial  
window coverings such as draperies, blinds and shades.

502.297.8884  
10707 Meeting Street • Prospect, KY 40059  
www.louisvillewindowtreatments.com




Marybeth Couch, Parishioner  
(left) the owner  
Vanessa Yates, Owner/Designer  
(right)

We're here through all of  
life's twists and turns.

At the Ditsler Agency it's not just our job to help  
guide you to a future worth looking forward to, it's  
our passion. The way we see it, putting you first  
means understanding your needs and making sure  
you get coverage at the right price.

Auto | Business | Home | Life | Retirement | Farm

**Ditsler Insurance Agency, LLC**  
1313 LYNDON LN STE 102  
LOUISVILLE, KY 40222  
(502) 895-0812  
www.ditslerinsurance.com




**FREE AD DESIGN**  
WITH PURCHASE  
OF THIS SPACE

**CALL 800.950.9952**

**Bobcat ENTERPRISES**

(502) 245-1911  
bobcatent.com

RENTAL • SALES • SERVICE • PARTS • TRAINING



**Anthem, Humana & Aetna**  
Medicare Health Plans, Home Health Care  
& Long Term Care

**John McBride, Parishioner**  
Office: 426-1806 • Cell: 419-4968



**Kentuckiana Deli Provisions**  
Distributors of  
**Boar's Head**

502-722-2306  
Found in Louisville's Finest Delicatessens!

**SUPPORT OUR ADVERTISERS!**



**Domino's**  
Tom & Ann Reynolds  
Parishioners

Westport Plaza • 425-5170  
Brownsboro Rd. Prospect  
409-4096 228-3030



**AHRENS Orthodontics**

• 3 NEIGHBORING LOCATIONS TO SERVE YOU •  
(502) 426-2744 • www.ahrensoortho.com

2015 Herr Lane (East Louisville, KY)  
6225 W. Hwy. 146 (Crestwood, KY) • 4819 Taylorsville Rd. (Taylorsville, KY)




**LANG**

Do Business Better with Lang  
Office Systems & IT Services  
www.langcompany.com 584.2383  
Welter Family, Parishioners

**Highlands Funeral Home**

3331 Taylorsville Rd.  
451-4420

Family-Owned & Operated  
by the  
Owen & Wagner Families

**KENTUCKIANA ROOFING CO.**  
One-Day Roofing  
893-5149  
David Brown - Parishioner



**PROSPECT PEDIATRICS**  
A Division of One Pediatrics

Terrence McKenna, M.D.  
Patrick Hynes, M.D.  
Pamela Biddle, M.D.

9217 U.S. Highway 42  
Prospect, KY 40059  
Phone: 502-228-1312  
Fax: 502-228-5541  
Accepting New Patients • www.prospectpediatrics.com

**Lucy de la Vega**  
REALTOR

(502) 553-7499  
Lucyd@GLH-llc.com

Residential Real Estate | Buying | Selling  
Single-family homes | Condos | Resale | New Construction  
[www.accesslouisvillehomes.com](http://www.accesslouisvillehomes.com)

**Greater Louisville Homes, LLC**  
1144 Main Street, Suite 201,  
Louisville, KY 40243

**ADT-Monitored Home Security**  
Get 24-Hour Protection From a Name You Can Trust

- Burglary
- Fire Safety
- Flood Detection
- Carbon Monoxide

1-855-225-4251

**Gustavo's Mexican Grill**

We are safely open for dine in, hosted "igloo style" dining, patio dining, curbside takeout, catering and boxed lunches.  
Check out our menu and catering menu:  
[www.gustavosmexgrill.com](http://www.gustavosmexgrill.com)

Locations  
Crestwood - 502-243-6950  
LaGrange - 502-222-4050  
Prospect - 502-434-7266  
Norton Commons, Prospect - 502-690-7070

Having a Fiesta? We know how to please a hungry crowd!  
Let us cater your event or celebrate with us at any of our 4 locations!  
Call Matt York for Catering at 502-269-1388  
Give a Gustavo's Gift Card to your loved ones!

**Signature HealthCARE**  
CARE FROM START TO FINISH.  
SKILLED NURSING  
IN-HOUSE REHAB THERAPISTS

SIGNATURE HEALTHCARE AT JEFFERSON MANOR  
SIGNATURE HEALTHCARE AT JEFFERSON PLACE

**TRY GIST PIANO CENTER**  
• TRUSTED IN KENTUCKY •

Sales • Tuning • Moving  
Storage • Restoration • Estimates

Hannah Gist (502) 451-1831 x308  
[www.gistpiano.com](http://www.gistpiano.com)

John and Hannah Gist, Parishioners

**Rattermans**  
FUNERAL HOMES

Providing comfort and service to families since 1864.

3711 Lexington Rd., St. Matthews 893-3644  
12900 Shelbyville Rd., Middleton 244-3305

**FRANK OTTE LANDSCAPE & DESIGN GROUP**

Brad Barz, Senior Landscape Designer  
[brad@frankotte.com](mailto:brad@frankotte.com) [www.frankotte.com](http://www.frankotte.com)  
M: 502.817.3320

Nominate Someone for Our Day of Giving

Like us on Facebook!

**Sugar Tree SWEET SHOP**

9444 Norton Commons Blvd • 502-434-6949  
Candy, Ice Cream, & Milkshakes

**WWJD**

Compliments of Automatic Controls Company  
502-266-6640

**Cassis Dermatology & Aesthetics Center**  
Dr. Tami Buss Cassis, MD, FAAD  
502-326-8588  
[www.cassisderm.com](http://www.cassisderm.com)  
9301 Dayflower St. • Suite 100 • Prospect, KY 40059

**VALHALLA DENTAL CARE**  
[www.vdentalcare.com](http://www.vdentalcare.com)

**JEFF KESSLER, D.M.D.**  
245-9343

Two Locations to Serve You  
Norton Commons and Lake Forest

**SUPPORT OUR ADVERTISERS!**

**Hallmark House**

Hallmark House is a Premier, Personal Care, Alzheimer's & Memory Care Community. We are proud to announce our Deficiency Free State Survey!

[Hallmarkhouseky.com](http://Hallmarkhouseky.com) | 502.290.6706  
10301 Coneflower Lane | Prospect, KY 40059

**AVAILABLE FOR A LIMITED TIME!**  
**ADVERTISE HERE NOW!**

Contact **Nancy MacMillan** to place an ad today! [nmacmillan@4LPi.com](mailto:nmacmillan@4LPi.com) or (800) 477-4574 x6426

**CHRIS ALLEN**  
Realtor/Owner  
Norton Commons Resident  
(502) 594-3091  
[www.ChrisAllenProperties.com](http://www.ChrisAllenProperties.com)

**RAINEY ALLEN SHAW REALTORS**

**WEBER HEATING & AIR CONDITIONING, INC.**

502-896-1617  
Residential Commercial  
We service all makes and models!  
Sales, Service & Installation  
[weberhvac21@gmail.com](mailto:weberhvac21@gmail.com)  
[www.weberheatingandac.com](http://www.weberheatingandac.com)

**WE'RE HIRING**  
AD SALES EXECUTIVES

BE YOURSELF. BRING YOUR PASSION.  
WORK WITH PURPOSE.

- Work-Life Balance
- Full-Time with Benefits
- Serve Your Community
- Paid Training
- Some Travel

Contact us at [careers@4lpi.com](mailto:careers@4lpi.com)  
[www.4lpi.com/careers](http://www.4lpi.com/careers)

**Now Accepting New Patients**  
Emergency Care and Evening Appointments Available  
In-Network Provider for Most Insurances

Gentle, Caring Dental Team  
State of the Art Facility  
Same Day Crowns

General, Family Dental Care  
Reconstructive Dentistry  
Cosmetic & Sedation Services

**Signature Smiles AT CHAMBERLAIN POINTE**  
Arlene R. Baluyut, DMD and Associates  
(502) 326-1800  
4642 Chamberlain Lane, Suite 252  
[www.SignatureSmilesLouisville.com](http://www.SignatureSmilesLouisville.com)

Dr. Arlene Baluyut, DMD (Parishioner)

**We've Missed You!**  
Welcome Back to Mass

Stay connected to our faith community no matter where you are by signing up to get our bulletin delivered straight to your email!

[www.ParishesOnline.com](http://www.ParishesOnline.com)

**SUPPORT YOUR LOCAL PARISH.**  
Buy a bulletin ad space today!

**Commonwealth Bank & Trust Company**

**NORTON COMMONS BRANCH**  
10716 Meeting Street / Prospect, KY 40059  
502.259.2140

FDIC [www.CBandT.com](http://www.CBandT.com)