

April 10, 2022 Palm Sunday of the Lord's Passion



PALM SUNDAY

As he rode along, the people were spreading their cloaks on the road; the whole multitude of his disciples began to praise God aloud with joy for all the mighty deeds they had seen. - Lk 19:36, 37b

Excerpts from the Lectionary for Mass ©2001, 1998, 1970 CCD.

©LPI

Palm Sunday Processional

Cooney

Verse Response



Sing ho-san-na to the cho-sen one!

Refrain



Sing ho-san-na, sing ho-san-na,



sing ho-san-na to the cho-sen one!

Text and Tune: Rory Cooney. © 1999 by GIA Publications, Inc.. All rights reserved. Reprinted under OneLicense.net, #A-702365.

At the Procession with Palms - Gospel

Luke 19:28—40

Gathering Song

All Glory, Laud, and Honor

ST. THEODULPH

Refrain

All glo - ry, laud, and hon - or To you, Re-deem-er, King!
 To whom the lips of chil - dren Made sweet ho - san - nas ring.

Verses

1. You are the King of Is - ra - el And
 2. The com - pa - ny of an - gels Are
 3. The peo - ple of the He - brews With
 4. To you, be - fore your pas - sion, They
 5. Their prais - es you ac - cept - ed; Ac -

Da - vid's roy - al Son, Now in the Lord's Name
 prais - ing you on high; And we, with all cre -
 palms be - fore you went; Our praise and prayers and
 sang their hymns of praise. To you, now high ex -
 cept the prayers we bring, Great source of love and

com - ing, Our King and Bless - ed One.
 a - tion, In cho - rus make re - ply.
 an - thems Be - fore you we pre - sent.
 alt - ed, Our mel - o - dy we raise.
 good - ness, Our Sav - ior and our King.

Text: *Gloria, laus et honor*; Theodulph of Orleans, c. 760–821; tr by John M. Neale, 1818–1866, alt. Tune: ST. THEODULPH, 7 6 7 6 D; Melchior Teschner, 1584–1635.

First Reading

Isaiah 50:4–7

Responsorial Psalm

Ps. 22

Haugen

Refrain

My God, my God, O why have you a - ban - doned me?

Text: Psalm 22:8–9, 17–18, 19–20, 23–24; Marty Haugen © 1983, GIA Publications, Inc. ; refrain trans. © 1969, ICEL. Tune: Marty Haugen © 1983, GIA Publications. All rights reserved. Reprinted under OneLicense.net, #A-702365.

Second Reading

Philippians 2:6–11

Gospel Acclamation

Mass of Mercy

True

Cantor, then All

Glo-ry to you, Word of God, Lord Je - sus Christ.

Glo-ry to you, Word of God, Lord Je - sus Christ.

The image shows two staves of musical notation in 6/8 time. The first staff is for the Cantor and the second for the All. The lyrics are 'Glo-ry to you, Word of God, Lord Je - sus Christ.' The melody is simple and repetitive.

Text: ICEL © 2010. Music: Mass of Mercy, Lori True, Copyright © 2014 GIA Publications, Inc., Chicago. All rights reserved. Reprinted under OneLicense.net, #A-702365

Gospel

Luke 22:14–23:56

RCIA Dismissal (11am Mass Only) Dismissal of the Catechumens

Walker

May the word of God strength-en you. May the word of God

nour-ish you. May the word of God com-fort you_ all your life.

The image shows two staves of musical notation in 6/8 time with a key signature of one sharp (F#). The lyrics are 'May the word of God strength-en you. May the word of God nour-ish you. May the word of God com-fort you_ all your life.' The melody is simple and repetitive.

Text and Tune: Christopher Walker © 1996 Published by OCP Publications.. All rights reserved. Reprinted under OneLicense.net, #A-702365.

Apostle's Creed

I believe in God,
the Father almighty,
Creator of heaven and earth,
and in Jesus Christ, his only Son, our
Lord,

[At the words that follow, up to and
including *the Virgin Mary, all bow.*]

who was conceived by the Holy Spirit,
born of the Virgin Mary,

suffered under Pontius Pilate,
was crucified, died and was buried;
he descended into hell;
on the third day he rose again from
the dead;
he ascended into heaven,
and is seated at the right hand of
God the Father almighty;
from there he will come to judge
the living and the dead.

I believe in the Holy Spirit,
the holy catholic Church,
the communion of saints,
the forgiveness of sins,
the resurrection of the body,
and life everlasting.

Amen.

Excerpts from the English translation of *The Roman Missal* © 2010,
International Commission on English in the Liturgy Corporation. All
Rights Reserved.



SATURDAY, APRIL 16TH 1:30pm–2:00pm

You and your family are encouraged to join all of Saint Bernadette in an **EASTER TRADITION** of our parish. As a visual reminder of the **VICTORY** that the cross holds for us, your family is asked to bring fresh flowers (one or several) to transform the bare wooden cross that will be erected at our entrance sign, into a beautiful witness of the **HOPE** that Jesus brings to our world. The event will take place on Holy Saturday, April 16, 1:30–2:00pm with prayer, followed by covering the cross with colorful flowers. Bring the family!

Preparation of Gifts

Were You There

African American Spiritual



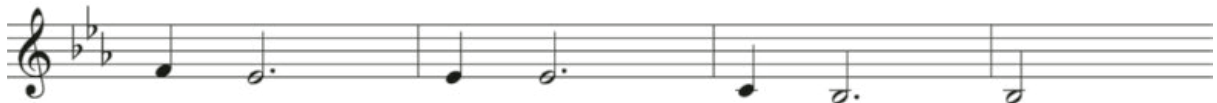
1. Were you there when they cru - ci - fied my Lord?
2. Were you there when they nailed him to the tree?
3. Were you there when they pierced him in the side?
4. Were you there when the sun re - fused to shine?
5. Were you there when they laid him in the tomb?
6. Were you there when they rolled the stone a - way?



Were you there when they cru - ci - fied my Lord?
Were you there when they nailed him to the tree?
Were you there when they pierced him in the side?
Were you there when the sun re - fused to shine?
Were you there when they laid him in the tomb?
Were you there when they rolled the stone a - way?



Oh, some - times it caus - es me to



trem - ble, trem - ble, trem - ble.



Were you there when they cru - ci - fied my Lord?
Were you there when they nailed him to the tree?
Were you there when they pierced him in the side?
Were you there when the sun re - fused to shine?
Were you there when they laid him in the tomb?
Were you there when they rolled the stone a - way?

Text: African American spiritual. Tune: WERE YOU THERE, 10 10 with refrain; African American spiritual; harm by Robert J. Batastini, b. 1942.

Eucharistic Acclamations

Mass of Mercy

True

We will sing *Mystery of Faith*, Option 3

“Save us, Savior of the world, for by your Cross and Resurrection you have set us free,

The English translation of The Roman Missal copyright © 2010, ICEL. All rights reserved.



Thursday, April 14 : MASS OF THE LORD'S SUPPER at 7pm
Our period of adoration will go until 10pm and
close with the office of night prayer at 9:45pm

Friday, April 15: CELEBRATION OF THE LORD'S PASSION at 7pm

Saturday, April 16: EASTER VIGIL MASS at 8:45pm

Refrain

Draw near, draw near! Take the Bod - y
of your Lord. Draw near, draw near!
Drink the Blood for you out - poured.

Verses

1. Draw near and take the Bod - y of the Lord,
2. Christ, our Re-deem - er, God's e - ter - nal Son,
3. Let us ap - proach with faith - ful hearts sin - cere
4. With heav'n - ly bread Christ makes the hun - gry whole;
and drink with faith the Blood for you out - poured.
has by his cross and blood the vic - t'ry won.
and claim the prom - ise of sal - va - tion here.
his liv - ing wa - ter fills the thirst - ing soul.
Saved by Christ's Bod - y and his ho - ly Blood, with
He spent his life for great - est and for least. Praise
Christ rules our hearts, and all his saints de - fends; he
Al - pha - O - me - ga, un - to whom shall bow all
D.C.
souls re - freshed we give our thanks to God.
Christ, the Pas - chal Vic - tim, Christ the Priest.
gives be - liev - ers life that nev - er ends.
na - tions of the earth, be with us now.

Text: Sancti, venite, Christi corpus sumite, 7th C., tr. By John M. Neale, 1818–1866, alt. Tune: Steven R. Janco, b. 1961, © 1992, World Library Publications. All rights reserved. Reprinted under OneLicense.net, #A-702365.



Sunday, April 17: **EASTER SUNDAY MASS**
8:30am and 11:00am



HOLY WEEK SCHEDULE

Sunday, April 10.....Palm Sunday

- 9:45am.....ABB (Adult Bible Background)..... Lourdes Rm
- 9:45am.....GIFT..... SMA
- 12:00pm....RCIA Luncheon.....Soubirous Rm
- 3:00pm.....Faith Sharing.....N700

Monday, April 11

- 8:15am.....Mass (Rosary).....Church & Online
- 9:45am.....Faith Sharing Group.....N700
- 3:00pm.....Centering Prayer.....Chapel
- 3:00pm.....Girl Scouts (292).....Soubirous Rm
- 6:30pm.....Boy Scouts.....Soubirous Rm
- 7:00pm.....Men's Choir.....Church

Tuesday, April 12

- 8:00am.....Women's Bible Study.....Soubirous Rm
- 10:15am.....Faith Sharing.....N700
- 12:00pm....Mass (Rosary).....Church & Online
- 12:30pm—7:30pm...Adoration.....Church
- 12:45pm—2pm....Confession.....Church

NO EVENING CONFESSION

- 6:30pm.....SMA PTO.....SMA Library
- 7:00pm.....Women's Bible Study.....Soubirous Rm

Wednesday, April 13

- 6:00am.....Men's Boot Camp.....Soubirous Rm
- 8:15am.....Mass (Rosary).....Church & Online
- 5:00pm.....Youth Choir.....Church
- 6:15pm.....Youth Solo/Cantor.....Church
- 6:30pm.....Bear Den.....Soubirous Rm
- 6:30pm.....Lion Den.....St. Cecelia Rm
- 6:45pm.....Choir.....Church

Thursday, April 14.....Holy Thursday

- 1:25pm.....SMA Prayer Service.....Church & Online
- 7:00pm.....Holy Thursday Mass.....Church & Online

Friday, April 15..Parish Center Closed...Good Friday

- 9:00am.....SMA Stations of the Cross.....Church
- 7:00pm.....Good Friday Service.....Church & Online

Saturday, April 16.....Easter Vigil

- 8:00am.....Men's Group.....Fr. McGivney Rm
- 1:30pm.....Decorate Cross.....Outside
- 8:45pm.....Easter Vigil.....Church & Online

Sunday, April 17.....Easter Sunday

- 8:00am.....Rosary.....Chapel
- 8:30am.....Mass.....Church & Online
- 9:45am.....ABB (Adult Bible Background).....Lourdes Rm

NO G.I.F.T

- 11:00am....Mass.....Church & ONLINE



Saturday, April 9

4:00pm Nicholas Buckler

Sunday, April 10

8:30am Margaret Carrico

Robert and Patsy Seger

11:00am Parishioners of Saint Bernadette

Monday, April 11

8:15am Edward Flaherty

Tuesday, April 12

12:00pm Harold Dukes

Wednesday, April 13

8:15am Stephen Lutes and Albert Kauffman

Thursday, April 14

7:00pm Ken O'Hara

Friday, April 15

GOOD FRIDAY

Saturday, April 16

8:45pm Parishioners of Saint Bernadette

Sunday, April 17

8:30am Starr & Harry Kavorkian; Ted State;

Ed Ruth; Clay Keibler; Ken O'Hara;

Norb LaTulippe; and Joan Medley

**11:00am Mary Roos; Dana Bayerle; Roy Fey;
and Nellie Stahlman**


Please call Tina @ 815-3102 if you would like to make a special Intention for a Mass. The usual stipend for a Mass Intention is \$10 to support the work of the Parish.

*Indicates intentions are for those still living.

Thank You.

Mary Jean Pirouznia and family would like to thank the Saint Bernadette Community for the outpouring of love and support following the death of her husband, Issa. This kind compassion has truly been a blessing.

PRAYER REQUESTS



Please remember all those who are ill in our parish and: David Meade, Fr. Bill Fichteman, Jody Gubach, Angela Kavorkian, Lindsay Weidman, Judy Montgomery, Steve Krebs, Emmy Atkinson, Tasso Katselas, Julia Leopold, Ronald Bennett, Yvonne Seibert, Liam Atherton, Maria and Arnett, Brooks Fuentes, Kenneth Elmer, Maxine Stoehr, Joseph Butler, Jim Sauer, Ezra Shaffer, Fran Hughes, Robert Dennett, Jack Mayer, Ryan and Catherine Yacavoni, Debbie Benoit, Bruce Lane, Bob Quinlan, Lucy Todd, Debbie Wibbels, John and Susan Weber, Tom Toole, Clint Crosley, Janice Finnegan, Raymond Lindle, Carole Howard, David Such, Dr. Owen Schmitt, Jeff Engledow, Sandy Holloway, Wilma Brown, Christy Judge, Ed Blecha, Leachman House, Ben Beer, David Coleman, Jim Whittaker, Alex Lhotsky, Christy Mattingly, June Merrifield, Tim Huval, and all of our men and women serving our country, all humanitarian endeavors including Peace Corps and AmeriCorps, for their safe return home. IF YOU WOULD LIKE TO ADD SOMEONE TO THE LIST, PLEASE CALL THE PARISH @ 425-2210.



Kevin, Carley, and Blair Kern

Russ, Emilie, and Carlie Sturm; and Denise Isaac

Zack & Kathryn Tencza

Julie Voegele

Derek, Kami, Simone, and Sutton Wigginton

PARISH Support



Amount Collected 03/27/22	\$ 11,739
Collected through WeShare Online	\$ 6,532
Total Collected 03/27/22	\$ 18,271

***Note: The majority of online WeShare donations are made on the 15th of the month.**

Year to Date Actual as of 2/28/22	\$ 1,139,797
Year to Date Budgeted as of 2/28/22	\$ 1,231,967
Difference	\$ (92,170)
Year to Date Actual this time last year	\$ 1,200,934



IT'S SAFE. IT'S SIMPLE. IT'S CONVENIENT.

Donate today using your debit card, credit card, checking, or savings account.

- 1 Visit <https://stb2008.weshareonline.org>
- 2 Set up your account.
- 3 Choose a payment option and customize your donation.



Questions? Contact Tina LaTulippe at 815-3102



WEEKLY PRAYER

READINGS FOR THE WEEK OF APRIL 10, 2022

- Sunday:** Lk 19:28-40/Is 50:4-7/Ps 22:8-9, 17-18, 19-20, 23-24 [2a]/Phil 2:6-11/Lk 22:14—23:56 or 23:1-49
- Monday:** Is 42:1-7/Ps 27:1, 2, 3, 13-14/Jn 12:1-11
- Tuesday:** Is 49:1-6/Ps 71:1-2, 3-4a, 5ab-6ab, 15 and 17/Jn 13:21-33, 36-38
- Wednesday:** Is 50:4-9a/Ps 69:8-10, 21-22, 31 and 33-34/Mt 26:14-25
- Thursday:** *Chrim Mass:* Is 61:1-3a, 6a, 8b-9/Ps 89:21-22, 25 and 27/Rv 1:5-8/Lk 4:16-21
Evening Mass of the Lord's Supper: Ex 12:1-8, 11-14/Ps 116:12-13, 15-16abc, 17-18/1 Cor 11:23-26/Jn 13:1-15
- Friday:** Is 52:13—53:12/Ps 31:2, 6, 12-13, 15-16, 17, 25/Heb 4:14-16; 5:7-9/Jn 18:1—19:42
- Saturday:** Vigil: Gn 1:1—2:2 or 1:1, 26-31a/Ps 104:1-2, 5-6, 10, 12, 13-14, 24, 35 [30] or Ps 33:4-5, 6-7, 12-13, 20-22 [5b]/Gn 22:1-18 or 22:1-2, 9a, 10-13, 15-18/Ps 16:5, 8, 9-10, 11 [1]/Ex 14:15—15:1/Ex 15:1-2, 3-4, 5-6, 17-18 [1b]/Is 54:5-14/ Ps 30:2, 4, 5-6, 11-12, 13 [2a]/Is 55:1-11/Is 12:2-3, 4, 5-6 [3]/Bar 3:9-15, 32—4:4/Ps 19:8, 9, 10, 11/Ez 36:16-17a, 18-28/Ps 51:12-13, 14-15, 18-19 [12a]/Rom 6:3-11/Ps 118:1-2, 16-17, 22-23/Lk 24:1-12
- Next Sunday:** Acts 10:34a, 37-43/Ps 118:1-2, 16-17, 22-23 [24]/Col 3:1-4 or 1 Cor 5:6b-8/Jn 20:1-9 or Lk 24:1-12 or, Lk 24:13-35

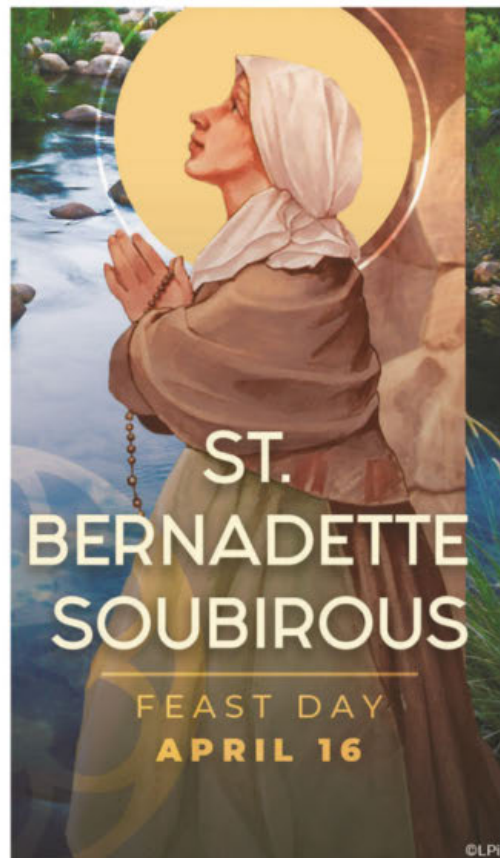
OBSERVANCES FOR THE WEEK OF APRIL 10, 2022

- Sunday:** Holy Week begins; Palm Sunday of the Passion of the Lord
- Monday:** St. Stanislaus, Bishop and Martyr
- Wednesday:** St. Martin I, Pope and Martyr
- Thursday:** Holy Thursday
- Friday:** Good Friday; Tax Day
- Saturday:** Holy Saturday
- Next Sunday:** Easter Sunday

LIVE THE LITURGY

Inspiration for the week

Hailed one moment and rejected the next. This seems to be the pattern that repeats itself not only throughout history but in our own lives as well. Jesus wants to be triumphantly welcomed into our hearts with joy! And welcome him we do! Then come the times when we do exactly the opposite and we reject the teachings of the Gospel and turn our backs on God's friendship. The one who at one time is a friend now becomes an enemy. Jesus understands our ambivalence. He lived it on the way to the cross. Understanding the full array of human emotion, God accepts us where we are. There is a great deal of drama on the road to Calvary. Our lives can be dramatic as well. In all of those whirlwind moments it can be difficult to find God's presence and understand his will. We walk with Jesus this week seeking inspiration and hope, the essential keys needed to unlock the door to God's presence in our lives.



SAINT OF THE WEEK

At the age of 14 St. Bernadette (1844-1879) was living in abject poverty with her family in a one-room basement which had previously been used as a jail, in the town of Lourdes in southern France. She was a sickly child, having fallen victim to Cholera in 1854 and would battle asthma and tuberculosis for the rest of her short life. Bernadette was illiterate and is characterized in many accounts as slow or ignorant. It was in her 14th year that Bernadette was granted 18 visions of a 'Lady' at a grotto in Massabielle. The Lady instructed Bernadette to come daily to the grotto to receive the visions, eventually proclaiming 'I am the Immaculate Conception'. A spring at the grotto, which appeared where Bernadette was instructed to dig, has been a site of miraculous healing. The Lady also asked that a chapel be built in the grotto for pilgrims. Today the Marian shrine at Lourdes is one of the world's most popular.

During and following the period of visions, the saint was examined rigorously by Church and local authorities. The popular excitement around the visions left her subject to persistent questioning and attention. Eventually she sought protection by retiring to a home for the poor in a nunnery. She took her vows in 1866 with the Sisters of Charity at Nevers. She worked as an infirmary assistant, and later a sacristan, but by the end of her life she was too sick to participate in convent life. She died at the age of 35, humble and penitent until the end.



PRAYER FOR THOSE RECEIVING SACRAMENTS AT EASTER VIGIL

Good and gracious God, giver of all that is good, we bring before you today our brothers and sisters who are preparing to receive the Sacraments of Initiation.

St. Paul says to the Romans, "The word is near you, in your mouth and in your heart..."

Keep safe these catechumens who long for your saving sacraments. Perfect them and make them worthy to be called your sons and daughters.

We pray also for ourselves and ask for the same gifts that you freely give to them. Make us all worthy to call you our Father.

We ask all this in Jesus' name, who is our savior and our brother.

Amen.

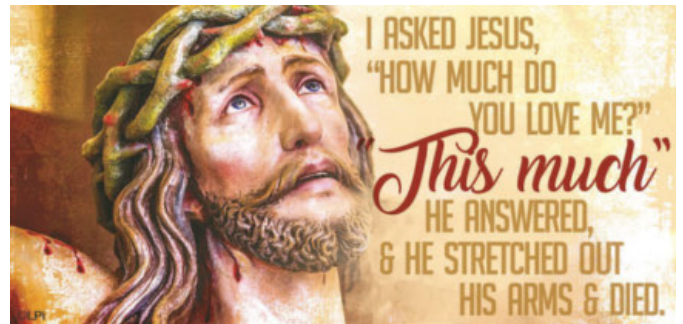
New Parents Meals Ministry

Know someone in our church family who is welcoming a baby through birth, foster care, or adoption? (Maybe it's you!)

Your St. Bernadette family wants to help and celebrate with you by bringing you food!

We provide delicious, home-cooked meals that fit your schedule and dietary needs via safe, contactless porch drop-off.

Please go to www.stb2008.org/new-parents-meal-ministry or contact Nina Gladson, ministry coordinator, at ninacam@vt.edu to find out more.



TIME TO RETURN RICE BOWLS

Thanks to all who have participated in the Catholic Relief Services Rice Bowl Collection. Rice Bowl offerings may be returned any time to the basket in the Narthex of Church or to the Parish Center.



Hear today's homily again at www.stb2008.org

ADULT FAITH FORMATION

Join us on Sundays from 9:45-10:45am for **ADULT BIBLE BACKGROUND** with Deacon Jim Shields in the Parish Center, Lourdes Room. Learn about the bible background of the Sunday readings. Contact Deacon Jim at jims@stb2008.org or at 423-7222 for more information.


The ministry of **EUCCHARISTIC ADORATION** offers the opportunity to all parish members to come and spend time before our Lord physically present in The Consecrated Host. Adoration before the exposed Blessed Sacrament takes place on Tuesdays, 12:30-7:30pm in Church.

The **ROSARY AND THE CHAPLET OF MERCY** is prayed in the Chapel weekdays following Mass and 8:00am before Sunday Masses.

We welcome you to join us on Mondays from 3:00pm—4:00pm for **CENTERING PRAYER** in the Day Chapel. Centering Prayer is a method of prayer in which we consent to rest in God's presence. For more information contact Vickie Speer at speer.vickie@gmail.com or 267-4872.

MEN'S LEADERSHIP BOOT CAMP meets every Wednesday from 6:00-7:00am in the Parish Center, Soubirous Rm. This is a weekly gathering designed to help men develop as Catholic Christian leaders in their families, careers and beyond. For more information on the group contact Gary Montgomery at coachgary@icanplay.com or 423-9724.

THE MEN'S MINISTRY meets every Saturday from 8:00-9:30am in the Parish Center, Fr. McGivney Rm. The purpose of these gatherings is to provide a space for men to gather and discuss topics pertinent to their lives. For more information on the group contact Deacon Todd Auffrey at todda@stb2008.org




Adult Christian
Enrichment Programs

Join us as we examine the ancient biblical cultures, peoples, places, and writings and explore the meaning and impact on our life of faith today.

Sessions on **ZOOM**
Thursday 7:00pm—8:30pm
OR
Friday 10:00am—11:30am

Call Lynnette LeGette (502) 802-5966 to register (no fee) and receive the link to the class.


April 07—08 Being Roman
April 14—15 **NO CLASS—HOLY WEEK**
April 21—22 Being a Roman Soldier
April 28—29 Being a Roman Woman



DID YOU KNOW?

CATHOLIC CHARITIES OF LOUISVILLE, INC.

We join you in praying for an end to the war and suffering in Ukraine. Many of you have asked if we will receive refugees from Ukraine. While the U.S. has announced that our nation will receive 100,000 refugees from Ukraine, we don't yet know when. That resettlement often takes years. In the meantime, most Ukrainians hope to return to Ukraine after the conflict settles. We hope the same for them.



You've got Word on Fire **ENGAGE!**

Your parish has given you complete access to Bishop Barron's Word on Fire ENGAGE video library! Visit WoFDigital.org from Flocknote to watch any of the videos whenever you want without ever having to login.

Visit WoFDigital.org



On Good Friday, our parish will take up the annual collection to support Christians and Holy Places in the Holy Land. Your support helps the church minister in parishes, provide Catholic schools, and offer religious education. The Pontifical Good Friday Collection also helps to preserve the sacred shrines. For more information, please see www.myfranciscan.org/



**APRIL 24 at 10:00am
in the Day Chapel**

JOIN US FOR THE CHAPLET OF DIVINE MERCY

Pope John Paul II, at the canonization Mass for St. Faustina Kowalska in 2000, declared that the Second Sunday of Easter would be known as Divine Mercy Sunday. We will celebrate by praying the Chaplet of Divine Mercy. Please join us.



**COMMUNITY SHRED DAY
SATURDAY, MAY 14th
from 9AM-12PM**

Saint Bernadette Parking Lot

**SUGGESTED DONATION
\$5 PER BOX**

Cash or check accepted.
Checks should be made out to Saint Bernadette.

All donations benefit Saint Bernadette's Youth Ministry.



**MAY 14TH
7:30AM-12:30PM
SAINT MARY ACADEMY GYM**

Patients and hospitals are in real demand at this time. If you are feeling well, please make an appointment. Your donation can help save more than one life. Give the Gift of Life. We welcome all donors!

All scheduling will be made through the Red Cross website at www.RedCrossBlood.org. Search by sponsor keyword STBernadette then find St. Mary Academy and pick your time to donate. Contact Bill Blevins with the Red Cross at 609-7001 or parishioner, Rita Owens, at 387-7511 or mthexprt@gmail.com with any questions. If you'd like to volunteer to help at the event, contact Rita Owens.



BLESSING OF BIKE HELMETS AND DRIVER'S LICENSES

**SUNDAY, MAY 1
AT 1:30PM**

We will have a blessing of helmets for bike riders and licenses for new drivers at 1:30 p.m. on Sunday, May 1st, in the space between SMA and the church.



CHILDREN'S LITURGY AT SUNDAY MASS

Children's Liturgy of the Word (CLW) **RESUMES MAY 1** **VOLUNTEERS NEEDED**

CLW is a worship experience geared especially for children ages 3-7 during the 11am Mass on Sundays. It mirrors the worship experience of the larger community, with a style that is age appropriate, engaging and interactive. CLW is not a formal religious education class nor is it intended to substitute for attendance in a religious class - rather it partners with the religious class and parental teaching at home.

Volunteers such as yourself are what allow this ministry to continue. **Leaders** (Pre-K & K-2nd), **Assistant leaders** (Pre-K & K-2nd), and **Narthex monitors** are needed. Easy to follow Lessons & materials are provide. Safe Environment training and a Back Ground Check are required. To sign up to Volunteer or receive more information - Please contact Elizabeth Auffrey 815-3108 or elizabetha@stb2008.org



SAINT BERNADETTE YOUTH MINISTRY welcomes all **8th graders through high school students** to be part of our growing ministry. We meet every Thursday evening from 6:30pm to 8:00pm.

Sign up for text alerts for meeting info:
To: 81010 Msg: @8732eg



FIRST COMMUNION

Sunday, May 15th at 2pm

First Communion Rehearsal
Thursday, May 12 at 7pm in the Church



LIKE & FOLLOW
our parish on Facebook

For DAILY Catholic Content
and parish announcements

www.facebook.com/SaintBernadetteLouisville/

WEDNESDAY, APRIL 20 11:30 A.M.

PARISH CENTER



Saint Bernadette parishioner, Mary Kopriva, will be giving an interesting and unique talk about fossils and minerals. Mary will display fossils dating from approximately 550 million years ago through the end of the ice age 10,000 years ago. She will speak about and display minerals from around the world. Her program will be an interactive talk where she asks questions to involve the audience. Bring any



questions that you may have about this fascinating topic. Mary is providing door prizes.

Bring your lunch; drinks and dessert will be provided.

Please RSVP by Monday, April 18.
patjanebell@bellsouth.net or 502-326-9610



NOMINATIONS ACCEPTED

Saint Bernadette will have **4 OPENINGS ON THE PASTORAL COUNCIL AS OF JULY 1**. Members serve a term of 3-years. There are 4 Council members whose term will expire in June (Megan Elmore, Ryan Fischer, Rachel Ford, and Dawn Taylor).

If you are interested in nominating someone, or yourself, please email Nancy Falls at nancyf@stb2008.org.

The **NOMINATION DEADLINE IS APRIL 24**.

Those nominated will be invited to an information and discernment meeting in advance of selecting the new council members.

SACRAMENTS



BAPTISM

Families wishing to have their child/children (infancy through age 7) baptized at Saint Bernadette, please complete an inquiry form online at www.stb2008.org/baptism



FIRST COMMUNION

To register a child to receive the sacrament of First Communion at Saint Bernadette, please call Elizabeth Auffrey @ 815-3108 and complete an online registration form at www.stb2008.org/first-communion



CONFIRMATION

To register a child to receive the sacrament of Confirmation at Saint Bernadette, please call Elizabeth Auffrey @ 815-3108 and complete an online registration form at www.stb2008.org/confirmation



Interested in Becoming Catholic?

If you are interested in learning more about the Catholic faith, contact Dr. Sharon Schuhmann at sharons@stb2008.org or 815-3103 or inquire online at www.stb2008.org/rcia



MARRIAGE

Couples who wish to be married at Saint Bernadette should contact the parish office no less than six months before the proposed wedding date. To schedule a wedding at Saint Bernadette, please call Kelley Magnuson @ 815-3112.



ANOINTING OF THE SICK

To schedule the Sacrament of Anointing of the sick before a medical procedure or in the event of a serious illness, call Nancy Falls @ 815-3106. When hospitalized, please notify the Parish Office (425-2210). In cases of medical **emergency** or **death**, please call 966-7829.

PARISH INFORMATION

PARISH CENTER
 6500 St. Bernadette Avenue
 Prospect, KY 40059
 502-425-2210
 502-442-0065 Fax
www.stb2008.org

AFTER HOURS EMERGENCIES
 (A person near or in danger of death)
 502-966-7829

OFFICE HOURS
 Monday-Friday, 8:30am to 4:30pm

WEEKDAY MASSES
 Monday, Wednesday, Thursday, & Friday 8:15am
 Tuesday 12:00pm

WEEKEND MASSES
 Saturday 4:00pm
 Sunday 8:30am and 11:00am

EUCCHARISTIC ADORATION
 Tuesday 12:30pm–7:30pm

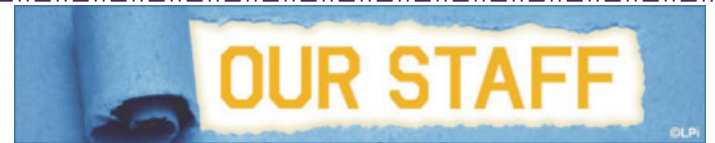
RECONCILIATION
 Tuesday 6:00pm–7:30pm
 Or by appointment



After each weekend Mass, Father invites anyone interested in parish membership to complete the "Inquiry Form" at the Kiosk in the Lobby.

You may also contact: Nancy Falls at nancyf@stb2008.org or 815-3106 or register online at www.stb2008.org/im-interested-in-joining

As of 2/28/22 we have 2092 Registered Families, (6632 souls).



Pastor.....Fr. Jeff Nicolas
 DEPLOYED UNTIL NOVEMBER 2022

Administrator pro tempore.....Fr. Pepper Elliott
fpelliott@stb2008.org.....815-3105

Interim Principal.....Julie Speer
julie.speer@saintmaryacademy.com315-2555

Deacon, Jerry Buehner.....jerryb@stb2008.org

Deacon, Todd Auffrey.....todda@stb2008.org

Deacon, Jim Shields.....jims@stb2008.org

Pastoral Associate for Intentional Discipleship
Dr. Sharon Schuhmann
sharons@stb2008.org.....815-3103

Mission Advancement Advocate.....Nancy Falls
nancyf@stb2008.org.....815-3106

Business Manager.....Angela Kerr
angelak@stb2008.org.....815-3109

Office Support Coordinator.....Tina LaTulippe
tinal@stb2008.org.....815-3102

Bookkeeper.....Missy Mattingly
missym@stb2008.org.....815-3111

Director of Worship & Music.....David Zorn
davidz@stb2008.org.....815-3104

Assistant Director of Worship & Music
Kelley Magnuson
kelleym@stb2008.org.....815-3112

Director of Children's Formation...Elizabeth Auffrey
elizabetha@stb2008.org.....815-3108

Neighbor Care Coordinator.....Ellen Creely
ellenc@stb2008.org.....815-3101

Youth Ministry.....Dr. Sharon Schuhmann
sharons@stb2008.org.....815-3103

Facilities Manager.....Rob Nicolas
facilities@stb2008.org.....509-7843



Limón y Sal
MEXICAN KITCHEN

502-423-4604
10000 BROWNSBORO RD. 40241
LIMONYALS02.COM
DINE IN • CARRY OUT
WE CATER (TACO • Fajita Bar)
-PARISHIONERS-

STUART GREEN LAW

ESTATES // TRUSTS // TAX

2020 High Wickham Place, Suite 206
Louisville, KY 40245
stuart@stuartgreenlaw.com
(866) 788-2784
www.stuartgreenlaw.com



LICHTEFELD INCORPORATED
908 S. 8th Street • Louisville, KY 40202
502-589-4777

Designing and Constructing
- Churches - Schools - Office - Warehouse
- Medical - Dental - Automotive - Retail

CALL:
MARK LICHTEFELD

Whitehouse
Residential & Commercial Painting Co.

(502) 425-0483
www.whitehousepaint.com

COIT
CLEANING & RESTORATION SERVICES
People you trust... trust Coit. www.coit.com

636-1401

Carpet & Area Rugs
Upholstery • Draperies, Blinds
& Window Coverings
Tile, Grout, Stone & Wood Floor Care
Air Duct Cleaning

24/7 Emergency
Fire & Water Damage

Jo Hall, Parishioner

LOS AZTECAS



MEXICAN RESTAURANT

U.S. Hwy 42 - Prospect
(502) 228-2450

Herr Ln - Lyndon
(502) 426-3994

Dining • Carryout • Catering

Large Group Reservations Welcome!

HOUSE of COLOUR

Meghan Tinker, Parishioner

Color & Style Analysis, Personal Shopping, Wardrobe Cleanout
502-439-6347 • meghan.tinker@houseofcolour.com
houseofcolour.com



12314 Shelbyville Rd. 502-244-8606 • 1200 Gardiner Ln. 502-451-2600

SAM KINNAIRD'S FLOORING

Designers On Staff **FREE** In Home Estimates
kinnairdsflooring.com

Arch L. Heady & Son
at Westport Village

7410 Westport Road
Louisville, Kentucky 40222

(502) 426-9351

Arch L. Heady III,
Chris L. Heady (Parishioner)
Cody Phillips • Caleb Raymer
Gregory Robertson

Your Pre-Arrangement Specialists
Where Personal and Sincere
Services Are a Tradition

www.archlheadywestport.com



MEDLEY'S

AUTO & TRUCK ALIGNMENT SERVICE, INC.
"Since 1944"
633 S. Campbell St. 3913 Shepherdsville Rd.
Steve Medley 585-5391 • 459-5740

Place Your Ad Here and
Support our Parish!

Instantly create and
purchase an ad with

**AD
CREATOR
STUDIO**



4lpi.com/adcreator



Tea Station
Asian Bistro

502.423.1202
9422 Norton Commons Blvd • Prospect, KY

Parish Member

BUTTORFF
Historically Inspired Custom Frames
243-0909

We're here through all of life's twists and turns.
At the Ditsler Agency it's not just our job to help guide you to a future worth looking forward to, it's our passion. The way we see it, putting you first means understanding your needs and making sure you get the right coverage at the right price.

Ditsler Insurance Agency, LLC
1313 LYNDON LN STE 102 LOUISVILLE, KY 40222
(502) 895-0812 | DitslerInsurance.com
Auto | Business | Home | Life | Retirement | Farm



SCAN FOR QUOTE



Fiesta Time Amigos
Mexican Restaurant

(502) 365-3327
10401 Meeting Street
Prospect KY 40059

\$5 OFF

Purchase of \$20
- or more with -
this coupon

**FREE
AD DESIGN**

WITH PURCHASE
OF THIS SPACE

CALL 800.950.9952

DRAPED IN STYLE

Draped in Style has been serving clients since 2005.
We specialize in residential and commercial window coverings such as draperies, blinds and shades.

502.297.8884
10707 Meeting Street • Prospect, KY 40059
www.louisvillewindowtreatments.com



Marybeth Crutch, Parishioner
(left) the owner
Vanessa Yates, Owner/Designer
(right)

Anthem, Humana & Aetna

Medicare Health Plans, Home Health Care
& Long Term Care

John McBride, Parishioner
Office: 426-1806 • Cell: 419-4968



Bobcat ENTERPRISES

(502) 245-1911
bobcatent.com

RENTAL • SALES • SERVICE • PARTS • TRAINING

SUPPORT OUR ADVERTISERS!

Domino's

Tom & Ann Reynolds
Parishioners

Westport Plaza • 425-5170
Brownsboro Rd. Prospect
409-4096 228-3030

AHRENS Orthodontics

• 3 NEIGHBORING LOCATIONS TO SERVE YOU •

(502) 426-2744 • www.ahrensortho.com
2015 Herr Lane (East Louisville, KY)
6225 W. Hwy. 146 (Crestwood, KY) • 4819 Taylorsville Rd. (Taylorsville, KY)



LANG

Do Business Better with Lang
Office Systems & IT Services
www.langcompany.com 584.2383
Welter Family, Parishioners

Highlands Funeral Home

3331 Taylorsville Rd.

451-4420

Family-Owned & Operated
by the
Owen & Wagner Families

KENTUCKIANA ROOFING CO.

One-Day Roofing
893-5149
David Brown - Parishioner



Lucy de la Vega
REALTOR

(502) 553-7499
Lucyd@GLH-llc.com

Residential Real Estate | Buying | Selling
Single-family homes | Condos | Resale | New Construction
www.accesslouisvillehomes.com

Greater Louisville Homes, LLC
1144 Main Street, Suite 201
Louisville, KY 40243

ADT-Monitored Home Security
Get 24-Hour Protection From a Name You Can Trust

- Burglary
- Fire Safety
- Flood Detection
- Carbon Monoxide

1-855-225-4251

Gustavo's Mexican Grill

We are safely open for dine in, hosted "islow style" dining, patio dining, curbside takeout, catering and boxed lunches. Check out our menu and catering menu: www.gustavosmexgrill.com

Locations
Crestwood - 502-243-6950
LaGrange - 502-222-4050
Prospect - 502-434-7266
Norton Commons, Prospect - 502-690-7070

Having a Fiesta? We know how to please a hungry crowd! Let us cater your event or celebrate with us at any of our 4 locations! Call Matt York for Catering at 502-269-1388 Give a Gustavo's Gift Card to your loved ones!

TOM DREXLER
BATHROOM REMODELING
Trusted since 1982

Robert Koch
Design Consultant
Parishioner

502-377-3655 | rkoch@tomdrexler.com

TRY GIST PIANO CENTER
• TRUSTED IN KENTUCKY •

Sales • Tuning • Moving
Storage • Restoration • Estimates

Hannah Gist (502) 451-1831 x308
www.gistpiano.com

John and Hannah Gist, Parishioners

Rattermans
FUNERAL HOMES

Providing comfort and service to families since 1864.

3711 Lexington Rd., St. Matthews 893-3644
12900 Shelbyville Rd., Middleton 244-3305

FRANK OTTE LANDSCAPE & DESIGN GROUP

Brad Barz, Senior Landscape Designer
brad@frankotte.com www.frankotte.com
M: 502.817.3320

Nominate Someone for Our Day of Giving

Like us on Facebook!

Sugar Tree
SWEET SHOP

9444 Norton Commons Blvd • 502-434-6949
Candy, Ice Cream, & Milkshakes

WWJD

Compliments of Automatic Controls Company
502-266-6640

Cassis
Dermatology & Aesthetics Center

Dr. Tami Buss Cassis, MD, FAAD
502-326-8588
www.cassisderm.com
9301 Dayflower St. • Suite 100 • Prospect, KY 40059

VALHALLA DENTAL CARE
www.vdentalcare.com

JEFF KESSLER, D.M.D.
245-9343

Two Locations to Serve You
Norton Commons and Lake Forest

SUPPORT OUR ADVERTISERS!

Hallmark House

Hallmark House is a Premier, Personal Care, Alzheimer's & Memory Care Community. We are proud to announce our Deficiency Free State Survey!

Hallmarkhouseky.com | 502.290.6706
10301 Coneflower Lane | Prospect, KY 40059

GROW YOUR BUSINESS BY PLACING AN AD HERE! CONTACT US!

Contact Nancy MacMillan to place an ad today!
nmacmillan@4LPi.com
or (800) 477-4574 x6426

WEBER HEATING & AIR CONDITIONING, INC.

502-896-1617
Residential Commercial
We service all makes and models!
Sales, Service & Installation
weberhvac21@gmail.com
www.weberheatingandac.com



GROW YOUR BUSINESS WHILE SUPPORTING YOUR LOCAL PARISH.

• BOOKS •

Purchase a bulletin ad today!

WE'RE HIRING AD SALES EXECUTIVES

BE YOURSELF. BRING YOUR PASSION. WORK WITH PURPOSE.

- Work-Life Balance
- Full-Time with Benefits
- Serve Your Community
- Paid Training
- Some Travel

Contact us at careers@4lpi.com
www.4lpi.com/careers

Now Accepting New Patients
Emergency Care and Evening Appointments Available
In-Network Provider for Most Insurances

Gentle, Caring Dental Team
State of the Art Facility
Same Day Crowns

General, Family Dental Care
Reconstructive Dentistry
Cosmetic & Sedation Services

MedSpa SERVICES

- Botox®
- Dermal Fillers
- Zoom® Whitening

Signature Smiles
AT CHAMBERLAIN POINTE

Arlene R. Baluyut, DMD and Associates

(502) 326-1800
4642 Chamberlain Lane, Suite 252
www.SignatureSmilesLouisville.com

Dr. Arlene Baluyut, DMD (Parishioner)

Elkin J Galvis, MD

Office (502) 561-4263
225 Abraham Flexner Way, Ste 800
Louisville, Kentucky 40202
kleinertkutz.com

Also seeing patients at Chamberlain Pointe, New Albany and St. Matthews locations

KLEINERT KUTZ
Hand Care Center

SUPPORT YOUR LOCAL PARISH.

Buy a bulletin ad space today!

Commonwealth Bank & Trust Company

NORTON COMMONS BRANCH
10716 Meeting Street / Prospect, KY 40059
502.259.2140

