

And the Word became flesh and lived among us.

St. Anne Parish

CHRISTMAS: The Nativity of the Lord

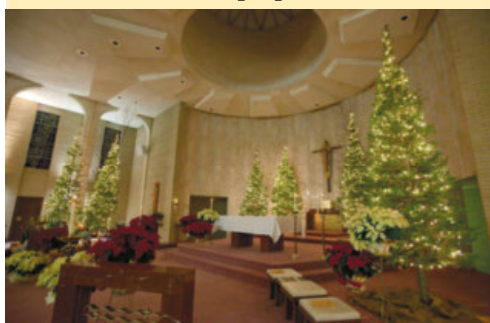
25 DECEMBER 2021

Feast of the Holy Family - 26 DECEMBER 2021



IT WAS 1997, MY FIRST CHRISTMAS

as pastor of Newman Parish in Stevens Point. Walking to celebrate the first of our two Christmas Eve Masses I was curious to see how the chapel was decorated. Our parish environment team was not involved in the preparations; that



was the task of the sisters in whose chapel we worshiped.

Newman was a parish without a church, and so depended upon the generous hospitality of the Sisters of St. Joseph of the Third Order of St. Francis, who allowed us, for a monthly rental fee, to use their beautiful chapel in their Motherhouse on Maria Drive.

I got buzzed in by the sister at the switchboard and headed down the long hall to the chapel. I wasn't as giddy as a child on Christmas morning, but I was eager to see our setting for Christmas.

Turning the corner and walking into the chapel, my heart sank. Behind the altar, on either side of the tabernacle, were two Christmas trees with multi-colored lights. The trees stood no more than five feet; dwarfed by the immense space surrounding them. The one saving grace were the flowers – a dozen or more large, brilliant poinsettias.

I couldn't stand there, crestfallen, for See **TREES** on Page 6

WELCOME

We're grateful that you've chosen to celebrate Christmas with us. If you live in the area and are interested in joining a Catholic parish, we'd appreciate your consideration. Come to Mass with us a few times and, if you're interested, contact Fr. Tom Lindner, our pastor, to schedule a meeting to talk about parish membership. You can find his email address and phone number on the next page.

"O Come, All Ye Faithful"

John F. Wade

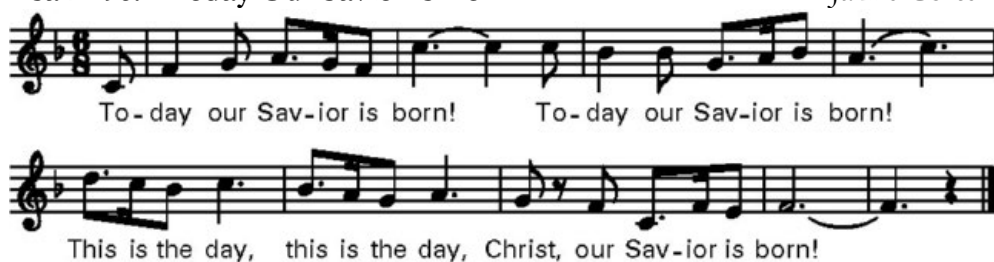
O come, all ye faithful, joyful and triumphant,
O come ye, O come ye to Bethlehem;
Come and behold him, born the King of angels;
O come, let us adore him, O come, let us adore him,
O come, let us adore him, Christ, the Lord!

Sing, choirs of angels, sing in exultation,
Sing, all ye citizens of heav'n above!
Glory to God, all glory in the highest;
O come, let us adore him, O come, let us adore him,
O come, let us adore him, Christ, the Lord!

Yea, Lord, we greet thee, born this happy morning,
Jesus, to thee be all glory giv'n;
Word of the Father, now in flesh appearing.
O come, let us adore him, O come, let us adore him,
O come, let us adore him, Christ, the Lord!

Psalm 96: "Today Our Savior is Born"

Jaime Cortez





715.849.3930 | stanneswausau.org
700 W. Bridge St., Wausau WI 54401
Parish Office Hours: 9A-4P Mon-Thurs

Fr. Tom Lindner, Pastor
frtom@stanneswausau.org | Ext. 309
Deacon Erv Burkhardt
ervb@stanneswausau.org | Ext. 303
Kristine Lato, Liturgy Coordinator
& Administrative Assistant
kristinek@stanneswausau.org | Ext. 307
John Schmitt, Lee Ann Lella
Disciple Formation Co-Directors
johns@stanneswausau.org | Ext. 306
leeannl@stanneswausau.org | Ext. 308
Paul Hoffer, Finance Director
paulh@stanneswausau.org | Ext. 310
Newman Catholic Schools
Jeff Gulan, President
www.NewmanCatholicSchools.com
715.845.5735

Pastoral Council
Jenny Bruening, Julie Bunczak,
Tony Cicha, Sandy Gilge, Kendall Gullo,
Cec Holmberg, Doug Holmberg,
Deb Jarosz, Gary Jarosz, John Lang,
Kathy Maves, Evie Nielsen, John Prey,
Elizabeth Waggoner, Jill Warsaw,
Deacon Erv Burkhardt, Fr. Tom Lindner

Finance Council
Mary Bethke, Tom Erickson, Tim Gierl,
Susan Imm, Gary Jarosz, Bill Lewandowski,
Buddy Watford, Ann Waraksa,
Paul Hoffer, Fr. Tom Lindner

JOINING OUR PARISH: Fr. Tom would be glad to talk with you about parish membership. Send him an email at frtom@stanneswausau.org or call 849.3930.

CELEBRATING BAPTISM: We gladly welcome children to faith through the waters of Baptism. If you want to raise your child in the Catholic faith and celebrate your child's baptism, please call the parish office, 849.3930. Parents celebrating the baptism of their first child are asked to complete a baptism orientation seminar.

CELEBRATING MARRIAGE: We eagerly welcome couples seeking to celebrate the Sacrament of Marriage. Contact Fr. Tom to talk about scheduling your wedding and to learn about marriage preparation.

COMMUNICATION: Email is a primary means of communication in the parish. If you are not getting our weekly parish emails, please send an email to mail@stanneswausau.org and we'll add you to the email list.

Gospel Acclamation

Sussex Carol, Barbara Bridge



Profession of Faith (The Apostles' Creed)

I believe in God, the Father almighty, Creator of heaven and earth, and in Jesus Christ, his only Son, our Lord, who was conceived by the Holy Spirit, born of the Virgin Mary, suffered under Pontius Pilate, was crucified, died and was buried; he descended into hell; on the third day he rose again from the dead; he ascended into heaven, and is seated at the right hand of God the Father almighty; from there he will come to judge the living and the dead. I believe in the Holy Spirit, the holy catholic Church, the communion of saints, the forgiveness of sins, the resurrection of the body, and life everlasting. Amen.

GATHERING GIFTS

In this season of giving gifts, we will gather our gifts to the parish by passing baskets from person to person and row to row. Contributions also can be placed in baskets in the baptistry and south entrance, as well as offered at stanneswausau.org. Thank you.

"Night of Silence"

Daniel Kantor



1. Cold are the peo - ple, win - ter of life, We trem - ble in
2. Voice in the dis - tance, call in the night, On wind you en -
3. Spir - it a - mong us, shine like the star, Your light that guides



shad - ows this cold end - less night, Fro - zen in the snow lie
fold us, you speak of the light, Gen - tle on the ear you
shep - herds and kings from a - far, Shim - mer in the sky so



ros - es sleep - ing, Flow - ers that will ech - o the sun -
whis - per soft - ly, Ru - mors of a dawn so em - brac -
emp - ty, lone - ly, Ris - ing in the warmth of your Son's



rise, Fire of hope is our on - ly warmth,
ing, Breath - less love a - waits dark - ened souls,
love, Star un - know - ing of night and day,



Wea - ry, its flame will be dy - ing soon.
Soon will we know of the morn - ing.
Spir - it we wait for your lov - ing Son.

“Silent Night”

Mohr, Gruber

Silent night, holy night, All is calm, all is bright
Round yon Virgin Mother and Child,
Holy Infant so tender and mild,
Sleep in heavenly peace, Sleep in heavenly peace.

Silent night, holy night, Shepherds quake at the sight;
Glories stream from heaven afar,
Heav'nly hosts sing alleluia;
Christ, the Savior, is born! Christ, the Savior, is born!

Silent night, holy night, Son of God, love's pure light
Radiant beams from thy holy face,
With the dawn of redeeming grace,
Jesus, Lord, at thy birth, Jesus, Lord, at thy birth.


If you are able, please remain standing for the Eucharistic Prayer.

Eucharistic Prayer

Mass of Creation, Marty Haugen

Preface

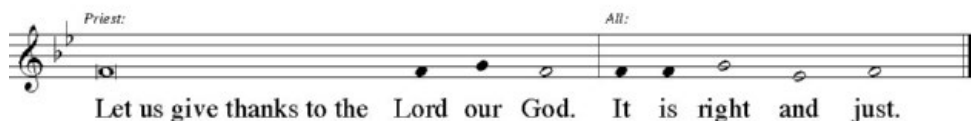
Priest: The Lord be with you. *All:* And with your spir - it.



Priest: Lift up your hearts. *All:* We lift them up to the Lord.



Priest: Let us give thanks to the Lord our God. *All:* It is right and just.



Holy, Holy

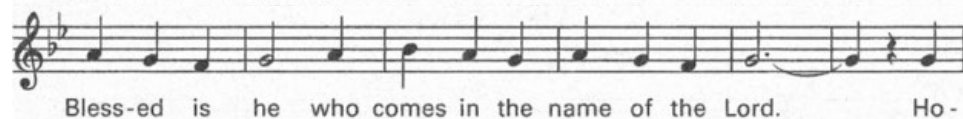
Ho-ly, Ho-ly, Ho-ly Lord God of hosts. Heav-en and



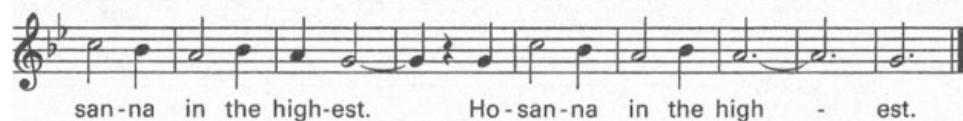
earth are full of your glo-ry. Ho-san-na in the high-est.



Bless-ed is he who comes in the name of the Lord. Ho-

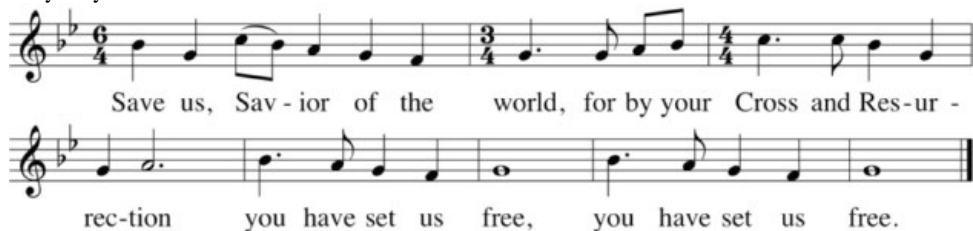


san-na in the high-est. Ho-san-na in the high - est.



Mystery of Faith

Save us, Sav-ior of the world, for by your Cross and Res-ur-
rec-tion you have set us free, you have set us free.



Stewardship

GOD, WE HEAR in the Christmas readings, has entered quietly into the world. Not into the great city of Jerusalem, but into a small village about five miles south. Not into a noble family, but to an outcast couple keeping the newborn in a manger. Not announced by royal edicts, but to common shepherds, the first human heralds of Christ's birth. As Christian stewards we simply allow Christ to live in us no matter what our circumstances happen to be. We allow Christ to share his love with us and reflect that love out to others. We now are the heralds of Christ's Incarnation. What an unimaginable gift from a generous Lord. Good stewards rejoice in this gift and give glory to God.

- International Catholic Stewardship Council

PARTICIPATION AT MASS

Dec. 11/12

4 PM - 112; 8:30 AM - 148

10:30 AM - 95; 6 PM - 78; Online - 190

ST. ANNE PARISH GIVING

Total collected (Dec. 12): \$20,636

Weekly need: \$15,099

Total collected (since July 1, 2021): \$333,155

Amount needed: \$353,218



2021-22 Parish Target: \$110,760

Pledges/Contributions: \$ 30,688

124 contributors / 12% of parish

Still needed: \$ 80,072

You can make your contributions to the parish and the Annual Appeal at stanneswausau.org.

2021 GIVING DEADLINE: Contributions are due at the parish office by Dec. 31 to be included in 2021 giving statements. If you have questions about your giving, please contact Paul Hoffer at paulh@stanneswausau.org or by phone.

Thanks to all who have returned your stewardship materials. If you haven't already done so, please take time this week to do so. Please REVIEW the materials and RETURN the pledge forms of Time, Talent & Treasure this week.



This Week

FEAST OF THE HOLY FAMILY | 26 DEC

1 Sm 1:20-22,24-28/1 Jn 3:1-2,21-24/Lk 2:41-52

- 9:30 AM Sunday +Bob Winter -LIVESTREAM
- 6 PM Sunday -People of St. Anne Parish

PLEASE NOTE A CHANGE IN THE NORMAL SUNDAY MASS SCHEDULE.

MONDAY 27 DEC / 1 Jn 1:1-4/Jn 20:1a,2-8

- Parish office closed

TUESDAY 28 DEC / 1 Jn 1:5-2:2/Mt 2:13-18

- 7 AM - Communion Service

WEDNESDAY 29 DEC / 1 Jn 2:3-11/Lk 2:22-35

- 8:15 AM - Mass +James Radtke

THURSDAY 30 DEC / 1 Jn 2:12-17/Lk 2:36-40

- 8:15 AM - Mass +Don Steckbauer

FRIDAY 31 DEC / 1 Jn 2:18-21/Jn 1:1-18

- 7 AM - Mass +Burish & Blaskowski families

SOLEMNITY OF MARY, MOTHER OF GOD

Nm 6:22-27/Gal 4:4-7/Lk 2:16-21

- 4 PM 31 DEC +Mary & John Spara Olson -LIVESTREAM

SOLEMNITY OF THE EPIPHANY OF THE LORD | 1/2 JAN

Is 60: 1-6/Eph 3:2-3a,5-6/Mt 2:1-12

- 4 PM Saturday +Maynard, Dorothy, Father Raphael Hollis -LIVESTREAM
- 8:30 AM Sunday +Henry Brzezinski
- 10:30 AM Sunday +Michael Bandoek
- 6 PM Sunday -People of St. Anne Parish

Links to the daily readings listed above, as well as video and written reflections, can be found at stanneswausau.org.

2022 CALENDARS are available on tables in the entranceways of church. We are grateful to Peterson/Kraemer Funeral Home for providing these calendars.

CIRCLE OF JOY GRATITUDE: Thanks to everyone who baked cookies or breads for the homebound and brought items for the homeless Warming Center. We packed 34 tins of cookies and delivered them to our parishioners. They were all very appreciative of our wonderful gift. Your generosity allowed us to take hygiene and clothing items, along with cookies and breads, to the Warming Center. You made this project a huge success!

LITTLE BLUE BOOKS continue to offer daily scripture passages and reflection throughout the Christmas season.

REGARDING MASKS: Bishop Callahan advises that "Wearing a mask is strongly recommended while attending Mass or other parish events." However, mask-wearing is not required.

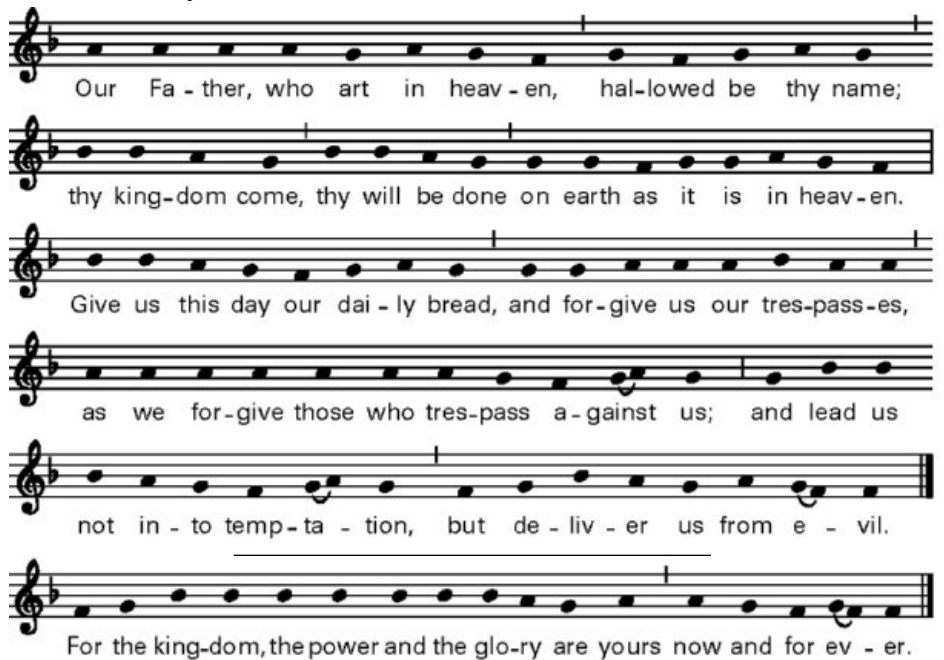
Amen



Lamb of God



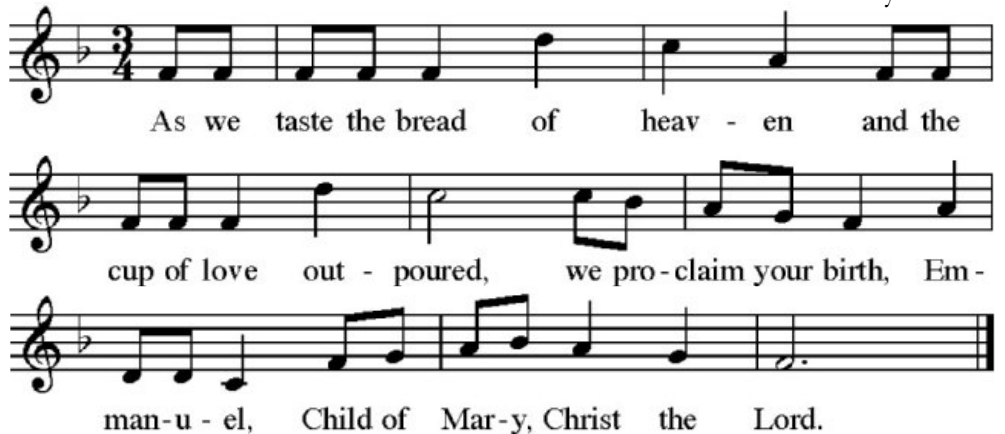
The Lord's Prayer



If you are able, please remain standing throughout the communion procession.

"The Table of Emmanuel"

Tony Alonso



IF YOU KNOW SOMEONE who is ill, grieving, alone — someone who needs to know the warmth of God's love — share a prayer shawl with them. Prayer shawls made by members of our parish are available in the southwest corner of the Gathering Space. They are made with prayer and blessing and then blessed by Fr. Tom. Please take a prayer shawl and share this gift of God's grace.



“Joy to the World”

Psalm 98, Watts/Handel

1. Joy to the world! the Lord is come; Let earth re-
 2. Joy to the world! the Sav - ior reigns; Let us our
 3. He rules the world with truth and grace, And makes the

1. ceive her King; Let ev - 'ry heart pre - pare him
 2. songs em - ploy; While fields and floods, rocks, hills and
 3. na - tions prove The glo - ries of his righ - teous -

1. room, And heav'n and na - ture sing, And heav'n and na - ture
 2. plains Re - peat the sound - ing joy, Re - peat the sound - ing
 3. ness, And won - ders of his love, And won - ders of his

1. sing, And heav'n, and heav'n and na - ture sing.
 2. joy, Re - peat, re - peat the sound - ing joy.
 3. love, And won - ders, won - ders of his love.

MUSIC FOR THE FEAST OF THE HOLY FAMILY

“Once in Royal David’s City”

Alexander/Gauntlett

1. Once in roy - al Da - vid's cit - y Stood a low - ly
 2. He came down to earth from heav - en Who is God and
 3. And through all his won - drous child - hood He would hon - or
 4. For he is our child - hood's pat - tern, Day by day like
 5. And our eyes at last shall see him, Through his own re -

1. cat - tle shed, Where a moth - er laid her ba - by
 2. Lord of all, And his shel - ter was a sta - ble,
 3. and o - bey, Love and watch the low - ly maid - en
 4. us he grew; He was lit - tle, weak, and help - less,
 5. deem - ing love; For that child so dear and gen - tle

1. In a man - ger for his bed. Mar - y was that
 2. And his cra - dle was a stall. With the poor and
 3. In whose gen - tle arms he lay. Chris - tian chil - dren
 4. Tears and smiles like us he knew: And he feels for
 5. Is our Lord in heav'n a - bove: And he leads his

1. moth - er mild, Je - sus Christ her lit - tle Child.
 2. mean and low - ly Lived on earth our Sav - ior ho - ly.
 3. all should be Kind, o - be - dient, good as he.
 4. all our sad - ness, And he shares in all our glad - ness.
 5. chil - dren on To the place where he has gone.

Additional music begins near the bottom of Page 1.

GIFT CARD GIVING: Parishioners are encouraged to donate gift cards, which will be given to St. Vincent de Paul to share in their outreach to individuals and families in need. Cards are requested for Kwik Trip, Pick 'n' Save and Walgreens valued at \$5 to \$25. Donations can be put in the collection basket at Mass until Jan. 9, the Feast of the Baptism of the Lord.

Gift cards can be purchased at the stores or online through Newman Catholic Schools. There is a link in the banner at stanneswau.sau.org.

BABY BOTTLE CAMPAIGN: The Baby Bottle Campaign raises funds for Hope Life Center, which offers pregnancy testing and counseling. Baby Bottles distributed during Advent will be gathered in early January. Make checks payable to St. Anne with “hope” in the memo line. Learn more at hopewi.org.

RESUMING COMMUNITY MEALS: St. Anne has a long tradition of serving Community Meals, but continuing that tradition depends upon a sufficient group of coordinators and volunteers. We plan, prepare and serve meals one Thursday a month to people who might otherwise go without a good, nutritious meal. Meals are served at St. Matthew School. If you'd be interested in participating in this important outreach, send an email to barb@stanneswau.sau.org. St. Anne's first meal is Jan. 27.

WELCOMING REFUGEES UPDATE: A group of parishioners began meeting in September to initiate a process of learning about the history and current reality of refugees and to consider the possibility of our parish co-sponsoring a refugee family.

After a discernment process lasting over several meetings, the group reached consensus to move forward in identifying a leadership team and making a formal application to the local refugee re-settlement agency. That application was submitted in mid-December. If accepted the re-settlement agency will “match” St. Anne with a family that will likely arrive in early January. The leadership team includes Christine Daniels, Matt Hattenhauer, Dakota Kaiser, Joan Kleist, Mary Lee Schulta, Steve and Sally Schmidt and Scott Waggoner. You can learn more at stanneswau.sau.org/welcome.

TREES / from Page 1

long. It was Christmas Eve, people would be arriving for Mass, there wasn't any way to make this better. So, Christmas was celebrated – with great spirit, and dinky trees.

Parishioners told me later there had been taller trees in previous years, but something had obviously prompted a change. Or, those larger artificial trees had shrunk into smaller artificial trees.

Being a new pastor I didn't want to ruffle feathers; we were the ones intruding on someone else's home, after all. And, yet, was it possible to decorate the space with larger trees, maybe even real trees? We had parishioners eager to take on such a task, but would their efforts be welcome? I explained my sadness and proposal with Sister Marice, who was essentially our landlord.

The reason for shorter trees was simple, Sister Marice explained. Sister Mary Rose, who was in charge of decorating for Christmas, had gotten older, her dexterity and stamina more limited, and there were fewer sisters to help her. There were shorter trees because she couldn't reach any higher to hang the lights.

Sister Marice agreed to larger trees, but I wondered how Sister Mary Rose would react to outsiders hauling in trees, determining their location, hanging the lights? I was told not to worry.

The next year, a few days before Christmas a crew of workers began carrying and erecting trees cut from a woods on the outskirts of town. There were six of them, around 20-footers. Massive in comparison. Stands were adjusted, lights strewn and tipping trees straightened as Sister Mary Rose watched in disbelief. She didn't say it, but I thought I could read her mind: What are these people doing to my chapel?

Walking home that second Christmas Eve, I realized I'd forgotten something. I got buzzed in and turned that same corner into the chapel and saw our remarkable forest of trees with white, twinkling lights. And sitting in a middle pew, the only person in the chapel, was Sister Mary Rose. I didn't intrude and left hoping that her being there on that late Christmas night meant she was happy with what we'd done.

She told me the next morning that she was. **TL**

“Hark the Herald Angels Sing”

Wesley, Mendelssohn

**Hark! the herald angels sing, “Glory to the newborn King;
Peace on earth, and mercy mild God and sinners reconciled!”
Joyful, all you nations, rise, Join the triumph of the skies;
With the angelic host proclaim, “Christ is born in Bethlehem!”
Hark! the herald angels sing, “Glory to the newborn King!”**

**Christ, by highest heaven adored, Christ the everlasting Lord:
Late in time behold him come, Offspring of the Virgin's womb.
Veiled in flesh the God-head see: Hail the incarnate Deity,
Pleased as man with us to dwell, Jesus, our Emmanuel.
Hark! the herald angels sing, “Glory to the newborn King!”**

**Hail the heav'n born Prince of Peace! Hail the Sun of Righteousness!
Light and life to all he brings, Ris'n with healing in his wings.
Mild he lays his glory by, Born that we no more may die,
Born to raise us from the earth, Born to give us second birth.
Hark! the herald angels sing, “Glory to the newborn King!”**



MASS MOVES TO MCKILLIP HALL JAN. 8/9

With the start of construction on the church renovation on Jan. 4, Lord's Day Mass moves to McKillip Hall – also known as “the gym” – beginning Jan. 8/9. Complete information regarding worship in our temporary chapel can be found in a newsletter mailed to all parishioners earlier this month. Further information regarding this move, as well as the church renovation project, will be included in upcoming Quick Things email updates and can be found at stanneswousau.org/re-imagining.

HELP NEEDED REMOVING PEWS

The existing pews need to be removed to make way for construction equipment and, eventually, new pews. A crew of parishioners is needed on Monday, Jan. 3 at 9 a.m. to remove the pews. It's estimated to take about three hours, but the more workers who volunteer, the less time it will take and the lighter the load. Send an email to mail@stanneswousau.org to indicate your availability and willingness. If you know a college student who might be home for Christmas break, encourage them to help.

SPEAKING OF PEWS

If you would like one or two or all of the pews, they are yours for the taking. Or, if you know of someone or an organization that might be interested, let them know. They will be ready to take Jan. 3, but you can contact the parish office now to let us know if you or someone else is interested.

A flyer for St. Anne Parish Youth Mission Trip. The flyer is yellow and blue. It says "St. Anne Parish Youth Mission Trip" in black text. Below that, it says "July 2-9, 2022" in black text. There is a red circular graphic that says "Register now for the best chance for a spot!". At the bottom, it says "More info and register at: www.stanneswousau.org". There is a photo of a group of people on a boat.

Plans are set for another great summer youth mission trip for youth and adult chaperones! We will once again partner with Group Mission Trips and head to Grand Rapids, MI, July 2-9. Find registration details at stanneswousau.org/mission-trips. Only a \$50 deposit is required now to secure your spot. Fund-raising helps raise remaining funds. Act now because the first organizational meeting is Sunday, Jan. 16.

CAROLS
TO ANTICIPATE
CHRISTMAS MASS

WHAT CHILD IS THIS, who, laid to rest,
On Mary's lap is sleeping?
Whom angels greet with anthems sweet,
While shepherds watch are keeping?

Refrain: This, this is Christ the King,
Whom shepherds guard and angels sing;
Haste, haste to bring him laud,
The babe, the son of Mary.

Why lies he in such mean estate
Where ox and ass are feeding?
Good Christian, fear; for sinners here
The silent Word is pleading.

So bring him incense, gold and myrrh,
Come peasant, king to own him;
The King of kings salvation brings,
Let loving hearts enthrone him.

O LITTLE TOWN OF BETHLEHEM, How still we see the lie!
Above thy deep and dreamless sleep The silent stars go by;
Yet in the dark streets shineth The everlasting Light;
The hopes and fears of all the years Are met in thee tonight.

For Christ is born of Mary, And gathered all above,
While mortals sleep, the angels keep Their watch of wond'ring love.
O morning stars, together Proclaim the holy birth!
And praises sing to God the King, And peace to all on earth.

How silently, how silently, The wondrous gift is giv'n!
So God imparts to human hearts The blessings of his heav'n.
No ear may hear his coming, But in this world of sin,
Where meek souls will receive him, still The dear Christ enters in.

O holy Child of Bethlehem! Descend to us we pray.
Cast out our sin and enter in, Be born in us today.
We hear the Christmas angels The great glad tidings tell;
O come to us, abide with us, Our Lord Emmanuel!

AWAY IN A MANGER, no crib for a bed,
The little Lord Jesus laid down his sweet head.
The starts in the bright sky looked down
where he lay,
The little Lord Jesus, asleep on the hay.

The cattle are lowing; the baby awakes,
But little Lord Jesus, no crying he makes.
I love you, Lord Jesus, look down from the
sky,
And stay by my cradle till morning is nigh.

Be near me, Lord Jesus; I ask you to stay
Close by me forever, and love me, I pray.
Bless all the dear children in your tender
care,
And fit us for heaven, to live with you there.

Music reprinted under ONE LICENSE #A-729229.

Partners
in Planning LLC

In alliance with
EQUITABLE
ADVISORS

"A goal without a plan is just a wish." -Antoine de Saint-Exupéry



John Knoll
FINANCIAL PLANNER CFP®, ChFC, RICP
(715) 845-3196
2100 Stewart Avenue, Suite 150
Wausau, WI 54401
Securities offered through Equitable
Advisors, LLC (NY, NY 212-314-4600)
member FINRA, SIPC. Partners in Planning,
LLC is not owned or operated by Equitable
Advisors PPG-161625 (8/21)

Parish Member

www.partnersinplanning.financial

**MODERN BUILDERS
& SUPPLIERS, INC.**
*Designers & Suppliers
of Fine Homes*
Bus. Phones:
848-3263 or 845-4258
Fax 842-3623
3704 W. Stewart Ave.,
Wausau, WI 54401-3997

Sterling Water, Inc.
Culligan.
Call Your Culligan Man Today!
355-7060
1-800-388-7288
www.culliganh2o.com

BADGERLAND
OVERHEAD DOOR LLC
Wausau, WI
Complete overhead door and door
opener sales, service & installation
715-581-6358 or 715-551-2673

Malbrit
Mechanical, Inc.
715-845-4848
Heating & Air Conditioning
Installation • Service • Repair
www.malbrit.com Since 1946

IMAGE MAKERS
*Professional Styling
For Entire Family*
SHARON OSTROWSKI
Owner
842-3915
601 S. 3rd, Wausau, WI 54401

the HappyCar
**Olson Tire & Auto
Service, Inc.**
OLSON
AUTO BODY & PAINT, LLC
PROUD TO SUPPORT
CATHOLIC SCRIP
LOCATED BY THE COURTHOUSE
715-845-8473
PARISHONES
OlsonTireAndAuto.com

BRAINARD
FUNERAL HOME
AND CREMATION CENTER
(715) 845-5525
Wausau East • Weston
brainardfuneral.com

**BLOOD DONORS NEEDED!
BLOOD DRIVE HOSTS NEEDED!**
Blood Center of
Northcentral
Wisconsin
Our Plasma & Blood
Stays Local.
Benefiting Our
Community
(715) 842-0761
(Downtown Wausau)
www.bcnwi.org

Prima Fascia Massage Therapy LLC
Rachael Spangler LMT
Myofascial Release Technique Trigger Point Deep Tissue
715.870.1251
<https://www.facebook.com/primafascia/>



Ashley Luczaj
Catholic Financial Life Advisor
(715) 432-7156
15-0049-10/21 Headquartered in Milwaukee, Wis.
Products and services are not available in all states.
*Products offered through Catholic Financial Life's
Brokerage affiliate, Catholic Brokerage Services Corporation.


Catholic
Financial Life
Financial Products Offered:
Life Insurance
Annuities
IRAs
Medicare Advantage,
Supplements and Part D Insurance*
Services Offered:
Family Protection
401(k) Rollover



PC PORTAL
EXPERIENCED. TRUSTED. SOLUTIONS.
Your Trusted IT Partner Since 2004
715.302.0152 | pcpportal.us




Peterson/Kraemer
Funeral Homes & Crematory Inc.
Wausau East/Wausau West
(715) 845-6900



OSUN
PRINT | MAIL | CREATIVE
1800 GRAND AVE • WAUSAU
SUNPRINTING.COM
715-845-4911



Helke
Funeral Home
and Cremation Services
Dean Welker, Parish Member
842-3993 • helke.com
320 Spruce St., Wausau



THE DIRKS GROUP
Beyond the Network
dirksgroup.com • 715-848-9865

Menzner Hardwoods
Accepting Employment Applications!
Please apply at
105 Main St., Marathon, WI
715-443-2354



Cloverbelt Credit Union
Great Rates You Can Bank On®
Wausau & Weston
715-842-5693
Parish Members

A wonderful Dining Experience with Friends



Est. 1936
• FROZEN DESSERT DRINKS
• DAILY SPECIALS
(715) 359-2200
Weston, WI
http://thepalmsausau.com/

relevant radio
92.9 FM
Talk Radio for Catholic Life!
Or Listen on-line at
RelevantRadio.com



THE DIRKS GROUP
Beyond the Network
dirksgroup.com • 715-848-9865



715-359-9639
Schofield, WI
www.facebook.com/ChristianFaithLifeResources
www.christianfaithlife.com



BENEDICTINE LIVING COMMUNITY OF WAUSAU
Benedictine Health System
SHORT-TERM REHAB AND LONG-TERM CARE
1821 N. Fourth Avenue, Wausau, WI
715-675-9451
www.blcwasau.org



715.675.2379 Mon - Fri 9-6
1740 Business 51 N Sat 9-4
Wausau, WI 54401 Closed Sundays
nigbursfinefurniture.com



EL TEQUILA SALSAS
Fresh Authentic Mexican Cuisine
Call (715) 298-3277
for Take Out or Delivery!
Best Mexican Food in Town!

Fresh Authentic Mexican Cuisine
Call (715) 298-3277
for Take Out or Delivery!
Best Mexican Food in Town!

AVAILABLE FOR A LIMITED TIME!
ADVERTISE HERE NOW!


Contact **Kena Owen** to place an ad today!
kowen@4LPi.com
or **(800) 950-9952 x5876**

LET US HELP PROTECT YOUR DREAMS.



Jamie Schlei Agency, LLC
3806 Schofield Ave Ste 3
Schofield, WI 54476
jschlei@amfam.com
(715) 359-2400

AMERICAN FAMILY INSURANCE
24-HOUR CLAIMS REPORTING & CUSTOMER SERVICE 1-800-MYAMFAM (662-6226)
HOME | AUTO | LIFE | BUSINESS | FARM & RANCH | AMFAM.COM



Asset Protection
Trusts • Wills • Probate
Nursing Home/Medicaid

305 S. 18th Avenue
Ste. 200
Wausau, WI 54401
715.843.5001
hougumlaw.com

SUPPORT OUR ADVERTISERS!




4007 Central Drive
Wausau, WI 54401
715-845-5111
aqclic@frontier.com

- Commercial HVAC
- HVAC Facilities Maintenance
- Commercial Kitchen Ventilation
- Industrial Ventilation
- Dust Collection Systems
- Architectural Metal Fabrication
- Light Structural Steel Fabrication
- Sheet Metal Fabrication

We've Missed You!
Welcome Back to Mass



Stay connected to our faith community no matter where you are by signing up to get our bulletin delivered straight to your email!

www.ParishesOnline.com

I love this town.

Thanks, St. Anne Church.

I love being here to help in a community where people are making a difference every day. Thank you for all you do.



John Neumueller Ins Agency Inc
John Neumueller, Agent
www.insuranceausauwi.com
Wausau, WI 54401
Bus: 715-675-3324



2007004 State Farm, Bloomington, IL



611 Stevens Dr.
Wausau, WI
715.848.2020

Dr. Gregory Leischer
Dr. Kelsey Koerner
Dr. Lauren Leurquin
eyecarecenterausau.com