

# ST. ANNE PARISH + 31 July 2022

Ordinary Time 11 12 13 14 15 16 17 18 19 20 21 22 23 24 25 26



**WELCOMING:** This weekend we welcome Fr. Thomas Nirappel. Fr. Thomas is seeking financial and spiritual support for his religious order, the Missionaries of St. Francis de Sales, and their ministry of educating poor children in northeast India. Fr. Thomas is currently serving in the Diocese of La Crosse as pastor of St. Adalbert Parish in Rosholt and St. Mary Parish in rural Stevens Point. Envelopes in which to make contributions are in the pews and chairs, as well as at the entrances. Contributions can be put in the collection basket today, or in the next few weeks. Checks should be issued to *St. Anne Parish*.

**NEXT WEEK:** There will be a homecoming of sorts next Saturday as Fr. Tom Krieg presides at the 4 p.m. Mass. Fr. Tom grew up at St. Anne and is the son of Vivian Krieg, a long-time parishioner. He will be in town for a reunion of his Newman Catholic High School class. Fr. Tom is currently pastor of St. James Parish in Eau Claire.



## Middle School Stay-at-Home Service Week | Aug. 8-12, 8:30A-4P Open to all youth ENTERING Gr. 6-8

**NCIS: Wausau** is a five-day local service experience designed to bring participants in contact with others while serving the community. Instead of just "talkin' the talk," you'll be "walkin' the walk."

**ADULTS AND HIGH-SCHOOL TEENS** assist as leaders and counselors. The number of participants is based on the number of leaders, so please consider making it possible for more young people to participate.

**LEARN MORE AT STANNESWAU-  
SAU.ORG/YOUTH-EVENTS.**



safe and secure housing, meals and assistance with long-term support. You can learn more about KATS at [www.katsinc.org](http://www.katsinc.org). Donations will be collected the next two Sundays, and can also be dropped in the main Gathering Space during the week.

The following items are being collected: toilet paper, Kleenex, paper towels and garbage bags.

### "Build a Longer Table"

David Bjorlin



1. Build a long - er ta - ble, not a high - er wall,
2. Build a saf - er ref - uge, not a larg - er jail;
3. Build a broad - er door - way, not a long - er fence.
4. When we lived as ex - iles, ref - u - gees a - broad,



feed - ing those who hun - ger, mak - ing room for all.  
where the weak find shel - ter, mer - cy will not fail.  
Love pro - tects all peo - ple, spar - ing no ex - pense.  
Christ be - came our door - way to the reign of God.



Feast - ing to - geth - er, stran - ger turns to friend,  
For an - y place where jus - tice is de - nied,  
When we em - brace com - pas - sion more than fear,  
So must our ta - bles wel - come those who roam.



Christ breaks walls to piec - es; false di - vi - sions end.  
Christ will breach the jail wall, free - ing all in - side.  
Christ tears down our fenc - es: all are wel - come here.  
None can be ex - clud - ed; all must find a home.



# ST. ANNE PARISH

Living the Gospel with love and courage.

715.849.3930 | stanneswausau.org  
700 W. Bridge St., Wausau WI 54401  
Parish Office Hours: 9A-4P Mon-Thurs

Fr. Tom Lindner, Pastor

frtom@stanneswausau.org | Ext. 309

**JOINING OUR PARISH:** Fr. Tom is eager to talk with you about parish membership. Contact him at frtom@stanneswausau.org or 849.3930.

**CELEBRATING BAPTISM:** We gladly welcome children to faith through the waters of Baptism. To learn more about celebrating your child's baptism, send an email or call Fr. Tom.



**FR. JAMES MARTIN**, the Jesuit priest and author of many excellent books — *Jesus: A Pilgrimage* being, arguably, the best of the lot — offers a live faith-sharing opportunity every Friday on Facebook. It's similar to my Quick Things in that some weeks it's essentially him remarking, to varying degrees of eloquence, on various topics. I try to watch each week, whether live or later; it's worth a half hour and you don't need a Facebook account to connect.

On July 22, the day designated on the Church calendar to honor St. Mary Magdalene, Fr. Martin identified the day as a "Solemnity." He sounded somewhat unsure, but thought he was correct. He wasn't and, I'll confess, I thought it was a rather foolish mistake for him to make. Shouldn't a priest, especially one with such prominence, know the calendar?

Without getting too far into the weeds of how different saints and occasions are identified on the calendar, suffice to say there are essentially three general categories: *Solemnities*, which are of greatest importance, ranging from Easter and Christmas to All Saints and the Assumption; *Feasts*, which recognize most of the apostles, as well as lesser occasions, such as the Visitation, Baptism of

See **MAGDALENE** on Page 5

## Glory to God

Mass of the Angels and Saints, Steven Janco

Glo - ry to God in the high - est, and on  
earth peace to peo - ple of good will.

*To verses*

*Cantor, then All (Last time)*

A - men.

1. We praise you, we bless you, we adore you, we glorify you, we give you thanks for your great glory, Lord God, heavenly King, O God, almighty Father.
2. Lord Jesus Christ, Only Begotten Son, Lord God, Lamb of God, Son of the Father, you take away the sins of the world, have mercy on us; you take away the sins of the world, receive our prayer; you are seated at the right hand of the Father, have mercy on us.
3. For you alone are the Holy One, you alone are the Lord, you alone are the Most High, Jesus Christ, with the Holy Spirit, in the glory of God the Father.

## Psalm 90

Marty Haugen

If to-day you hear his voice, hard - en not your hearts.

## Gospel Acclamation

Mass of the Angels and Saints, Steven Janco

Al - le - lu - ia, al - le - lu - ia, al - le - lu - ia.

Al - le - lu - ia, al - le - lu - ia, al - le - lu - ia.

## Profession of Faith (The Apostles' Creed)

**I believe in God, the Father almighty, Creator of heaven and earth, and in Jesus Christ, his only Son, our Lord, who was conceived by the Holy Spirit, born of the Virgin Mary, suffered under Pontius Pilate, was crucified, died and was buried; he descended into hell; on the third day he rose again from the dead; he ascended into heaven, and is seated at the right hand of God the Father almighty; from there he will come to judge the living and the dead. I believe in the Holy Spirit, the holy catholic Church, the communion of saints, the forgiveness of sins, the resurrection of the body, and life everlasting. Amen.**

**KNEELING & STANDING:** Please remember that people at pews with kneelers, if able, are asked to kneel after the Holy, Holy and to stand at the Great Amen. People at chairs without kneelers, if able, are asked to remain standing - out of reverence - throughout the Eucharistic Prayer.

**“Where Your Treasure Is”**

Marty Haugen

Where your treas-ure is, there your heart shall be. All that  
 you pos-ess will nev-er set you free. Seek the  
 things that last; come and learn from me. Where your  
 treas-ure is, your heart shall be. be.

**Mass of the Angels and Saints**

Steven Janco

Holy, Holy

Ho - ly, Ho - ly, Ho - ly Lord God of  
 hosts. Heav'n and earth are full of your glo - ry. Ho -  
 san - na, ho - san - na, ho - san - na in the  
 high - est, ho - san - na, ho - san - na, ho -  
 san - na in the high - est. Bless - ed is he who comes in the  
 name of the Lord. Ho - san - na, ho -  
 san - na, ho - san - na in the high - est, ho -  
 san - na, ho - san - na, ho - san - na in the high - est.

**Mystery of Faith**

We pro - claim your Death, O Lord, and pro -  
 fess your Res - ur - rec - tion un - til you come a - gain.

**Amen**

A - men, a - men, a - men.  
 A - men, a - men, a - men.



**THERE'S A WARNING** in today's Gospel for those who pursue leisure and pleasure as their goal in life without concern for the poor and less fortunate. He tells the parable of the wealthy landowner who, upon yielding an exceptionally profitable harvest one year, determines that he will live the rest of his days in relaxation; to eat, drink and be merry. God calls the miser a "fool" and lets him know that his greed and self-indulgence will not bring him the security he seeks. Good stewards acknowledge that the money and possessions entrusted to them are to be used to further the mission of Jesus Christ. This might prompt us to reflect on our own daily consumption habits. Do we spend money on articles that make us better ambassadors of Christ? Does our personal lifestyle bring "good news to the poor"?

— *International Catholic Stewardship Council*

**PARTICIPATION AT MASS**

July 23/24

4 PM - 112; 8:30 AM - 155  
 10:30 AM - 135; 6 PM - 110; Online - 215

**ST. ANNE PARISH GIVING**

Total collected (July 24): \$19,884  
 Weekly need: \$15,250

Total collected (since July 1, 2022): \$62,560  
 Amount needed: \$61,000

**FISCAL YEAR GIVING AT-A-GLANCE**

June 30 marked the end of the 2021-22 fiscal year and the good news is that parish giving exceeded the amount needed as established in the parish budget. We'll provide a more complete review of the fiscal year in a couple months, but here are the giving numbers:

2021-22 Giving Total: \$795,182  
 Amount Needed: \$776,000  
 Difference: +\$19,182  
 2020-21 Giving Total: \$752,676

**SEEKING GARDENERS:** A few parishioners are needed to assist in maintaining flower gardens and other landscaping around the church, school and rectory. If you're willing to get your hands dirty and can commit to maybe an hour a week through the fall, please call the office or send an email to [ail@stanneswau.org](mailto:ail@stanneswau.org).

*Please support our  
 bulletin advertisers.*



TO STRENGTHEN OUR PARISHES    TO LOVE OUR NEIGHBORS    TO CARE AND PRESERVE    TO FORTIFY OUR FUTURE

**HAVE YOU MADE YOUR PLEDGE?** We are getting ever so close to meeting our target for the **INSPIRED BY THE SPIRIT** campaign, which means that your pledge and contribution are all that more needed and important as we anticipate paying the final bills for the beautiful renovation of our church. Please be attentive to the letter and pledge form you recently received in the mail. Brochures and pledge forms also are available at church entrances. Please make your pledge this week if possible.

**THANK YOU** to those parishioners who have already pledged \$708.538, which is 78 percent of our goal!

## Transitions

**ETERNAL LIFE:** We pray for the eternal rest of **Leona Denfeld** who died recently. May she rest in the peace of the Risen Lord.

## This Week

**MONDAY 1 AUG** / Jer 28:1-17/Mt 14:13-21

**TUESDAY 2 AUG** / Jer 30:1-2,12-15,18-22/Mt 14:22-36 or Mt 15:1-2, 10-14

- 7 AM - Communion Service

**WEDNESDAY 3 AUG** / Jer 31:1-7, Mt 15:21-28

- 8:15 AM - Communion Service

**THURSDAY 4 AUG** / Jer 31:31-34/Mt 16:13-23

- 7 AM - Communion Service

**FRIDAY 5 AUG** / Na 2:1,3;3:1-3,6-7/Mt 16:24-28

- 7 AM - MASS +Poor Souls

**SATURDAY 6 AUG** / Dn 7:9-10, 13-14/2Pt 1:16-19/Lk 9:28-36

- 9 AM Reconciliation

**NINETEENTH SUNDAY IN ORDINARY**

**TIME | 6/7 AUG**

Wis 18:6-9/Heb 11:1-2, 8-19 or 11:1-2, 8-12/Lk 12:32-48

- 4 PM Saturday +Lorraine Doering
- 8:30 AM Sunday +Maynard Hollis **LIVESTREAM**
- 10:30 AM Sunday +Helen Carl
- 6 PM Sunday -People of St. Anne Parish

Links to the daily readings listed above, as well as video and audio reflections can be found at [stanneswausau.org](http://stanneswausau.org).

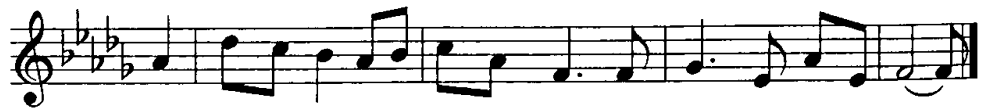
Find links to watch the June 19 Dedication Mass, as well as photo highlights, at [StAnnesWausau.org/re-imagining](http://StAnnesWausau.org/re-imagining).

### “You Satisfy the Hungry Heart”

Omer Westendorf



You sat-is-fy the hun-gry heart with gift of fin-est wheat;



come give to us, O sav-ing Lord, the bread of life to eat.

### “Laudate Dominum” (Praise the Lord, all you peoples) Jacques Berthier, Taize



Lau-dá - te Dó-mi-num, lau-dá - te Dó-mi-num o-mnes



gen - tes, al - le - lú - ia. al - le - lú - ia.

Music reprinted under ONE LICENSE #A-729229.



**THANK YOU** to those parishioners who participated in our recent orientation and have begun serving at Mass as eucharistic ministers. More ministers are welcome. To learn more, send an email to [frrtom@stanneswausau.org](mailto:frrtom@stanneswausau.org).

**THE NEED REMAINS** for more parishioners to assist at Mass as **READERS, WELCOME MINISTERS** and **SERVERS** at all Masses and **LIVE-STREAM MINISTERS** at the 8:30 a.m. Mass. If you are willing to assist in any of these roles, send an email to [frrtom@stanneswausau.org](mailto:frrtom@stanneswausau.org) to learn more.



**ANOINTING:** If you or a family member or friend were not able to participate in last weekend's celebration of the Anointing of the Sick and seek to be anointed, please contact Fr. Tom. He will gladly schedule a time to celebrate the sacrament at church, your home or care center.

**MAGDALENE** | from Page 1

of the Lord and Transfiguration; and *Memorials*, which honor the vast majority of the saints. There are also *Optional Memorials*, but we'll save that designation for another column, as well as days such as Ash Wednesday and All Souls that don't fit any of the three main classifications. See what I mean about the weeds?

Getting back to Fr. Martin's speculation about the designation of July 22. It was for as long as these categories existed celebrated as a Memorial, the Memorial of St. Mary Magdalene. In 2016, however, Pope Francis raised the significance of Mary's recognition to a Feast, more appropriate, he said, of the woman who was a "true and authentic evangelizer," "the apostle of the apostles." With that designation, she became the only woman honored with a Feast, other than Jesus' mother Mary, and attained a status comparable to all but one of the other apostles.

In making his faux pas about Mary Magdalene's day being a Solemnity, Fr. Martin did offer some justification. Think about it, he said, from the minute she encountered Jesus at the empty tomb until she returned to the Upper Room where all the others were hiding, she was the Church, she was the only person who had experienced the Paschal Mys-

tery – the life, death and resurrection of Jesus! He might have added that if not for Mary and her witness and proclamation, the good news of the empty tomb might have never been told.

While walking that afternoon I was thinking about Fr. Martin's mistake and the more I pondered the more I realized he was exactly correct, even if technically incorrect. That day in July should be identified as the Solemnity of St. Mary Magdalene, Apostle to the Apostles, for the profound reasons he listed. It kind of gives me goosebumps to think about this woman running to share with the others — she was the Church; the only one who'd experienced what she experienced, who knew what she knew.

The Church already recognizes her extraordinary role in the Collect – or opening prayer – for the day: She was "entrusted ... before all others with announcing the great news of the Resurrection."

Only three other saints, other than Mary, the Mother of God, are honored with Solemnities, and each of them – John the Baptist, Peter and Paul – share a comparable significance in the life of Jesus and the Church. It's easy to justify Mary Magdalene being added to that elite group. Let's hope word of Fr. Martin's error starts circulating through just the right channels in Rome; not to correct his mistake, but to make it accurate. **TL**

**Partners in Planning LLC** | In alliance with **EQUITABLE ADVISORS**

"A goal without a plan is just a wish." -Antoine de Saint-Exupéry




**John Knoll**  
FINANCIAL PLANNER CFP®, ChFC, RICP  
(715) 845-3196  
2100 Stewart Avenue, Suite 150  
Wausau, WI 54401  
Securities offered through Equitable Advisors, LLC (NY, NY 212-314-4600) member FINRA, SIPC. Partners in Planning, LLC is not owned or operated by Equitable Advisors PPG-161625 (8/21)

Parish Member

[www.partnersinplanning.financial](http://www.partnersinplanning.financial)

**MODERN BUILDERS & SUPPLIERS, INC.**  
*Designers & Suppliers of Fine Homes*  
Bus. Phones: 848-3263 or 845-4258  
Fax 842-3623  
3704 W. Stewart Ave., Wausau, WI 54401-3997

GROW YOUR BUSINESS WHILE SUPPORTING YOUR LOCAL PARISH.



Purchase a bulletin ad today!

**BADGERLAND OVERHEAD DOOR LLC**  
Wausau, WI  
Complete overhead door and door opener sales, service & installation  
715-581-6358 or 715-551-2673

**Malbrit Mechanical, Inc.**  
715-845-4848  
Heating & Air Conditioning Installation • Service • Repair  
[www.malbrit.com](http://www.malbrit.com) Since 1946

**IMAGE MAKERS**  
Professional Styling For Entire Family  
SHARON OSTROWSKI  
Owner  
842-3915  
601 S. 3rd, Wausau, WI 54401

**FREE AD DESIGN**  
WITH PURCHASE OF THIS SPACE  
**CALL 800.950.9952**

**BRAINARD FUNERAL HOME**  
AND CREMATION CENTER  
(715) 845-5525  
Wausau East • Weston  
[brainardfuneral.com](http://brainardfuneral.com)

*Prima Fascia Massage Therapy LLC*  
Rachael Spangler LMT  
Myofascial Release Technique Trigger Point Deep Tissue  
715.870.1251  
<https://www.facebook.com/primafascia/>



**Ashley Luczaj**  
Catholic Financial Life Advisor  
(715) 432-7156

15-0049-10/21 Headquartered in Milwaukee, Wis. Products and services are not available in all states. \*Products offered through Catholic Financial Life's Brokerage affiliate, Catholic Brokerage Services Corporation.

**Catholic Financial Life**  
Financial Products Offered:  
Life Insurance  
Annuities  
IRAs  
Medicare Advantage, Supplements and Part D Insurance\*

Services Offered:  
Family Protection  
401(k) Rollover



**PC PORTAL**  
EXPERIENCED. TRUSTED. SOLUTIONS.  
Your Trusted IT Partner Since 2004  
715.302.0152 | pcpportal.us



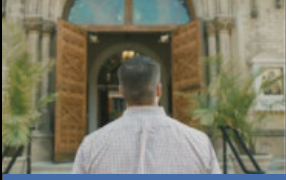
**Peterson/Kraemer**  
Funeral Homes & Crematory Inc.  
Wausau East/Wausau West  
(715) 845-6900



**OSUN**  
PRINT | MAIL | CREATIVE  
1800 GRAND AVE • WAUSAU  
SUNPRINTING.COM  
715-845-4911



**Helke**  
Funeral Home  
and Cremation Services  
Dean Welker, Parish Member  
842-3993 • helke.com  
320 Spruce St., Wausau



**As one door closes,  
God opens another.**

**Menzner  
Hardwoods**  
Accepting Employment Applications!  
Please apply at  
105 Main St., Marathon, WI  
715-443-2354



**Cloverbelt  
Credit Union**  
Great Rates You Can Bank On®  
Wausau & Weston  
715-842-5693  
Parish Members

**FREE  
AD DESIGN**  
WITH PURCHASE  
OF THIS SPACE



**relevant  
92.9 FM radio**  
Talk Radio for Catholic Life!  
Or Listen on-line at  
RelevantRadio.com

**If you're looking for a new career,  
this may be the opportunity  
you've been looking for.**

Tim J. Nowak, FICF  
General Agent  
(920) 810-6188  
timothy.nowak@kofc.org



Learn more about becoming a  
Knight of Columbus  
field agent: kofc.org/careers



**Knights of  
Columbus**

SEE DISABILITY INCOME LONG-TERM CARE RETIREMENT LIFE DISABILITY INCOME LONG-TERM CARE RETIREMENT



**715-359-9639**  
Schofield, WI  
www.facebook.com/  
ChristianFaithLifeResources  
www.christianfaithlife.com




**BENEDICTINE LIVING COMMUNITY  
OF WAUSAU**  
Benedictine Health System  
SHORT-TERM REHAB  
AND LONG-TERM CARE  
1821 N. Fourth Avenue, Wausau, WI  
715-675-9451  
www.blcwausau.org



**CALL  
800.950.9952**

**SUPPORT OUR  
ADVERTISERS!**



**Carmelo's  
Italian Restaurant**  
(715) 845-5570  
3607 N Mountain Rd  
Wausau  
Open 5pm Daily  
www.carmeloswausau.com

**REACH**  
Work-from-anywhere  
solutions for your home  
or mobile office.  
715.298.4414  
ReachConnects.com

**LIFE GOES BY  
in a flash  
LIVE BRILLIANTLY!**



**JIM KRYSHAK JEWELERS**  
Diamonds Fine Jewelry  
715.241.7557 • 226500 Rib Mountain Dr. • Wausau, WI

**GROW YOUR  
BUSINESS  
BY PLACING  
AN AD HERE!**

**CONTACT US!**

Contact Tim Browne  
to place an ad today!  
tbrowne@4LPi.com  
or (800) 950-9952 x2518



**LET US HELP PROTECT YOUR DREAMS.**

**Jamie Schlei Agency, LLC**  
3806 Schofield Ave Ste 3  
Schofield, WI 54476  
jschlei@amfam.com  
(715) 359-2400



**AMERICAN FAMILY  
INSURANCE**

24-HOUR CLAIMS REPORTING & CUSTOMER SERVICE 1-800-MYAMFAM (888-6326)  
HOME | AUTO | LIFE | BUSINESS | FARM & RANCH AMFAM.COM

American Family Mutual Insurance Company, S.S. and its Operating Companies, American Family Insurance Company, American Family Life Insurance Company, 6000 American Parkway, Madison, WI 53705 010000 - New 2/17 02/015 - 95/019



**HOUGUM  
LAW FIRM, LLC**  
ESTATE PLANNING & ELDER LAW

**Asset Protection  
Trusts • Wills • Probate  
Nursing Home/Medicaid**

305 S. 18th Avenue  
Ste. 200  
Wausau, WI 54401  
**715.843.5001**  
hougumlaw.com



**THE DIRKS GROUP**  
Beyond the Network  
dirksgroup.com • 715-848-9865

*"Don't replace it... Raise it!"*



**ABLE**  
Concrete Raising 100 LLC

**Industry Leader in Raising & Leveling Concrete**

• 25 Years Experience •  
Call for estimate: (715) 359-1900

**715-845-3171**  
3650 Stewart Ave.  
Wausau, WI 54401

**NEW PATIENTS WELCOME**  
Steven B. DeMille, D.D.S.  
Denise L. Long, D.M.D.  
Adam Manteuffel, D.D.S.  
www.wausaufamilydental.com



4007 Central Drive  
Wausau, WI 54401  
715-845-5111  
aqcllc@frontier.com

- Commercial HVAC
- HVAC Facilities Maintenance
- Commercial Kitchen Ventilation
- Industrial Ventilation
- Dust Collection Systems
- Architectural Metal Fabrication
- Light Structural Steel Fabrication
- Sheet Metal Fabrication

**Place Your Ad Here and  
Support our Parish!**

Instantly create and  
purchase an ad with

**AD CREATOR STUDIO**




**4lpi.com/adcreator**




**John Neumueller Ins Agency Inc**  
John Neumueller  
CLU, ChFC, CASL, LUTCF, CPCU, Agent  
Offices in Wausau & Marshfield  
www.insurancewausauwi.com  
Bus: 715-675-3324

State Farm, Bloomington, IL 2001739