

ST. ANNE PARISH + 7 August 2022

Ordinary Time 11 12 13 14 15 16 17 18 19 20 21 22 23 24 25 26



THIS WEEKEND is a homecoming of sorts as Fr. Tom Krieg returns to St. Anne and presides at our Saturday afternoon Mass. Fr. Tom is in town for a reunion of his 1982 Newman Catholic High School class and asked about an opportunity to preside at Mass in our renovated church. With a wedding anni-



versary to celebrate out of town, I was eager to accept his offer.

Regardless of the coincidence in scheduling, it's wonderful to welcome Tom back to the parish where he grew up. Tom was part of the generation of parishioners who lived in the neighborhood. There were blocks of houses occupied by St. Anne families, living so close the kids could walk to school or ride a bike – Bridge Street was not quite the busy thoroughfare it is today – and, of course, in those days most did attend what was then a *parish* school.

As with many of his classmates Tom was a server at morning Mass. Unless he was more of a morning person than he is now, that was a considerable sacrifice, but it's the thing most everyone did. Tom tells a wonderful story of a morning when his serving partner didn't show up

See **HOME** on Page 5

MIDDLE SCHOOL SERVICE - THIS WEEK!

Middle School Stay-at-Home Service Week

NCIS: Wausau is a five-day local service experience for all youth entering Grades 6-7-8. Beginning Monday morning and running through Friday, it is designed to bring participants in contact with others while serving the community. Instead of just "talkin' the talk," you'll be "walkin' the walk."

THANKS to those adults and high-school teens who are assisting as leaders and counselors.

LEARN MORE at stanneswausau.org/youth-events and watch for highlights throughout the week at St. Anne Parish on Facebook.



"God of the Hungry"

Scott Soper



1. God of all the hun-gry mil-lions, God who suf-fers with the
 2. God who trav - els with the strang-er, greet-ed by our ap - a -
 3. God who loves the sick, the dy - ing, they are pre-cious in your



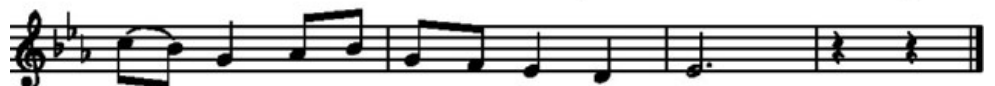
1. poor, still our greed keeps us from shar-ing with the hun-gry
 2. thy, teach us to em-brace all peo-ple; all can live with
 3. sight; we will bring them your com-pas-sion, fill their liv - ing



1. at our door. All who thirst will thirst no long - er when we
 2. dig - ni - ty. You have bid us clothe the na - ked, bring-ing
 3. with your light. God who brings the cap-tive free-dom, free our



1. do as you would do. May we care for all your
 2. hope in all we do. May we wel - come all your
 3. hearts to love a - new. May we com - fort all your



1-3. peo - ple; help us know that they are you.



ST. ANNE PARISH

Living the Gospel with love and courage.

715.849.3930 | stanneswausau.org
700 W. Bridge St., Wausau WI 54401
Parish Office Hours: 9A-4P Mon-Thurs

Fr. Tom Lindner, Pastor

frtom@stanneswausau.org | Ext. 309

Deacon Erv Burkhardt

ervb@stanneswausau.org | Ext. 303

Kristine Lato, Liturgy Coordinator
& Administrative Assistant

kristinek@stanneswausau.org | Ext. 307

John Schmitt, Lee Ann Lella

Disciple Formation Co-Directors

johns@stanneswausau.org | Ext. 306

leeannl@stanneswausau.org | Ext. 308

Paul Hoffer, Finance Director

paulh@stanneswausau.org | Ext. 310

Newman Catholic Schools

Jeff Gulan, President

www.NewmanCatholicSchools.com

715.845.5735

Pastoral Council

Jenny Bruening, Julie Bunczak,

Tony Cicha, Sandy Gilge, Kendall Gullo,

Cec Holmberg, Doug Holmberg,

Deb Jarosz, Gary Jarosz, John Lang, Kathy

Maves, Evie Nielsen, John Prey,

Elizabeth Waggoner, Jill Warsaw,

Deacon Erv Burkhardt, Fr. Tom Lindner

Finance Council

Mary Bethke, Tom Erickson, Tim Gierl,

Susan Imm, Gary Jarosz, Bill Lewandowski,

Buddy Watford, Ann Waraksa,

Paul Hoffer, Fr. Tom Lindner

JOINING OUR PARISH: Fr. Tom is eager to talk with you about parish membership. Contact him at frtom@stanneswausau.org or 849.3930.

CELEBRATING BAPTISM: We gladly welcome children to faith through the waters of Baptism. To learn more about celebrating your child's baptism, send an email or call Fr. Tom. Parents celebrating the baptism of their first child are asked to complete a baptism orientation seminar.

CELEBRATING MARRIAGE: We eagerly welcome couples seeking to celebrate the Sacrament of Marriage. Contact Fr. Tom to talk about scheduling your wedding and to learn about marriage preparation.

CARING FOR THE SICK: If you or a loved one are seriously ill or anticipating surgery, please call or email Fr. Tom to schedule the celebration of the sacrament of Anointing of the Sick.

RECONCILIATION: This sacrament of God's healing mercy is celebrated at 9 a.m. Saturday, and by appointment with Fr. Tom.

Glory to God

Glory to God in the highest,

and on earth peace to people of good will.

We praise you, we bless you, we adore you, we glorify you,
we give you thanks for your great glory,

Lord God, heavenly King, O God, almighty Father.

Lord Jesus Christ, Only Begotten Son, Lord God,

Lamb of God, Son of the Father,

you take away the sins of the world, have mercy on us;

you take away the sins of the world, receive our prayer;

you are seated at the right hand of the Father, have mercy on us.

For you alone are the Holy One, you alone are the Lord,

you alone are the Most High, Jesus Christ, with the Holy Spirit,
in the glory of God the Father. Amen.

Psalm 33: "Happy Are the People"

Marty Haugen

Hap - py are the peo - ple the Lord has cho - sen,
cho - sen to be his own.

Gospel Acclamation

Mass of the Angels and Saints, Steven Janco

Al - le - lu - ia, al - le - lu - ia, al - le - lu - ia.
Al - le - lu - ia, al - le - lu - ia, al - le - lu - ia.

Profession of Faith (The Apostles' Creed)

**I believe in God, the Father almighty, Creator of heaven and earth,
and in Jesus Christ, his only Son, our Lord,**

**who was conceived by the Holy Spirit, born of the Virgin Mary,
suffered under Pontius Pilate, was crucified, died and was buried;**

**he descended into hell; on the third day he rose again
from the dead; he ascended into heaven,**

**and is seated at the right hand of God the Father almighty;
from there he will come to judge the living and the dead.**

I believe in the Holy Spirit, the holy catholic Church,

the communion of saints, the forgiveness of sins,

the resurrection of the body, and life everlasting. Amen.

KNEELING & STANDING: Please remember that people at pews with kneelers, if able, are asked to kneel after the Holy, Holy and to stand at the Great Amen. People at chairs without kneelers, if able, are asked to remain standing - out of reverence - throughout the Eucharistic Prayer.

WE BOW TO THE ALTAR: The altar is the primary focal point as we gather to worship. Arriving or departing, we show reverence to the altar by bowing toward it before entering and leaving the pew. People standing at chairs without kneelers during the eucharistic prayer are encouraged to bow after the priest presents the bread and wine that have become the Body of Christ and the Blood of Christ. We bow as the priest genuflects.

"A Rightful Place"

Steve Angrisano

Refrain

Let us live our lives so that all might see that our hearts are rest - less till they rest in thee. Let us build your king - dom in truth and grace so that all might know they have a right-ful place.

Mass of the Angels and Saints

Steven Janco

Holy, Holy

Ho - ly, Ho - ly, Ho - ly Lord God of hosts. Heav'n and earth are full of your glo - ry. Ho - san - na, ho - san - na, ho - san - na in the high - est, ho - san - na, ho - san - na, ho - san - na, ho - san - na in the high - est. Bless - ed is he who comes in the name of the Lord. Ho - san - na, ho - san - na, ho - san - na in the high - est, ho - san - na, ho - san - na, ho - san - na in the high - est.

Mystery of Faith

We pro - claim your Death, O Lord, and pro - fess your Res - ur - rec - tion un - til you come a - gain.

Amen

A - men, a - men, a - men.



HAVE YOU MADE YOUR PLEDGE? We are very close to meeting our target for the **INSPIRED BY THE SPIRIT** campaign, which means your pledge and contribution are all that more important as we anticipate the final bills for the beautiful renovation of our church. Please be attentive to the letter and pledge form you recently received in the mail. If possible, please make your pledge this week. **THANK YOU** to those parishioners who have already pledged \$738,938, which is 82 percent of our goal!

Stewardship

PARTICIPATION AT MASS

July 30/31

4 PM - 117; 8:30 AM - 118
10:30 AM - 100; 6 PM - 132; Online - 137

ST. ANNE PARISH GIVING

Total collected	(July 31): \$10,291
	Weekly need: \$15,250
Total collected (since July 1, 2022):	\$72,851
Amount needed:	\$76,250
Shortfall:	\$ 3,399

This Week

MONDAY 8 AUG / Ez 1:2-5, 24-28c/Mt 17:22-27

• 8:30 AM - NCIS Middle School Service

TUESDAY 9 AUG / Ez 2:8-3:4/ Mt 18:1-5,10,12-14

• 7 AM - Mass +Ed, Gert & Dawn Burek
• 8:30 AM - NCIS Middle School Service

WEDNESDAY 10 AUG / 2 Cor 9:6-10/Jn 12:24-26

• 8:15 AM - Mass +Diane Bargender
• 8:30 AM - NCIS Middle School Service

THURSDAY 11 AUG / Ez 12:1-12/Mt 18:21-19:1

• 7 AM - Mass +Ellie & Jake Dahm
• 8:30 AM - NCIS Middle School Service

FRIDAY 12 AUG / Ez 16:1-1,60,63/Mt 19:3-12

• 7 AM - Mass +Reynolds family
• 8:30 AM - NCIS Middle School Service

SATURDAY 13 AUG/Ez 18:1-10,13,30-32/Mt 19:13-15

• 9 AM Reconciliation

TWENTIETH SUNDAY IN ORDINARY TIME 13/14 AUG

Jer 38:4-6, 8-10/Heb 12:1-4/Lk 12:49-53

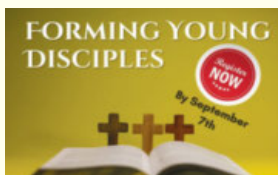
• 4 PM Saturday +John, Naomi & Jack Cline
• 8:30 AM Sunday +Carol Brady -LIVESTREAM
• 10:30 AM Sunday +John & Gertrude Spatz
• 6 PM Sunday -People of St. Anne Parish



HELP OUR MARRIAGE: Married couples experiencing conflict, challenge or other realities that threaten their relationship are strongly encouraged to consider participating in an upcoming Retrouvaille program in Wausau on Aug. 19-21. Find a link to complete information in the Quick Things email or HelpOurMarriage.org. Some couples come to Retrouvaille during the initial signs of a marriage problem. Other couples are in a state of despair and hopelessness when they attend the program. There is always hope of reviving your relationship.

REGISTRATION

is under way for Forming Young Disciples, the parish's Wednesday night faith formation program for children in kindergarten through Grade 10. Complete information can be found at stanneswausau.org.



SEEKING GARDENERS: A few parishioners are needed to assist in maintaining flower gardens and other landscaping around the church, school and rectory. If you're willing to get your hands dirty and can commit to maybe an hour a week through the fall, please call the office or send an email to mail@stanneswausau.org.

VISITING TOGETHER:

Pope Francis recently spoke of the need to visit and honor older members of the community. In his remarks, Pope Francis says "visiting the elderly must be done by many, together and often. Fr. Tom is anticipating visits to homebound parishioners, and those in care centers, in the late summer or early fall, which raises the question: Might there be parishioners willing to join him — visiting together? If so, please call Fr. Tom or send an email to frtom@stanneswausau.org.



Find links to watch the June 19 Dedication Mass, as well as photo highlights, at StAnnesWausau.org/re-imagining.

share
sunday

For the August Share Sunday collection we introduce a new beneficiary: KATS: Keep Area Teens Safe. The drive is part of an Eagle Scout project initiated by Carson Rice, a St. Anne parishioner and Newman Catholic High School student. KATS is a shelter for runaway and homeless youth ages 12 to 17 offering safe and secure housing, meals and assistance with long-term support. You can learn more about KATS at www.katsinc.org. Donations will be collected throughout this week and next Sunday in the main Gathering Space.

The following items are being collected: toilet paper, Kleenex, paper towels and garbage bags.

"Take Your Place at the Table"

Collegetown Composers Group

Take your place at the ta - ble; _____
 serve one an - o - ther in just-ice; _____
 do this and you _____ shall live.

Verses

All:

...do this and you _____ shall live.

"Rain Down"

Psalm 33, Jaime Cortez

Rain down, rain down, rain down your love on your
 peo - ple. love, God of life.
 1. Faith - ful and true is the word of our God.
 2. We who re - vere and find hope in our God
 All of God's works are so wor - thy of trust.
 live in the kind - ness and joy of God's wing.
 God's mer - cy falls on the just and the right;
 God will pro - tect us from dark - ness and death;
 full of God's love is the earth.
 God will not leave us to starve.

D.C.

HOME / from Page 1

and as he knelt alone in front of the altar, his dad George came and knelt next to him. George died a few years ago, and while Tom's mom Vivian has moved from their family home - in the neighborhood - she remains a faithful St. Anne parishioner.

Once Tom graduated from Newman he went away to college at Notre Dame and any number of experiences, opportunities and relationships that led him to contact the vocation director of the Diocese of La Crosse to talk about maybe entering the seminary and studying for the priesthood. The stories priests tell about how we discerned a vocation to the priesthood, what prompted the decision, varies with each of us, but there are some common themes.

One element I appreciate is priests or seminarians acknowledging the parish where they grew up; the parish where they first experienced the rituals and mystery of the Church; the community, the people shaping, affirming and challenging them in ways that were often unintentional but all too profound. I'm grateful Tom's beginnings of faith at St. Anne are part of his story.



Above: Fr. Tom with Fr. Bob McKillip, the St. Anne pastor at that time, and Fr. George Szews who grew up among the faithful people at St. Florian Parish in Hatley. And, yes, some priests wore ties in those days.

Page 1: Fr. Tom Krieg at his first Mass celebration on May 31, 1992 and the current pastor, then just a seminarian.

Three days after my ordination I celebrated Mass in my home parish, St. Anthony in Loyal, and it was bizarre looking out at these people who had been gathering in this church for as long as I could remember. It seemed strange leading them in worship, but also quite comfortable. We all were in a familiar place, gathered with people we knew well, maybe too well.

Tom has presided at Mass in our church before and maybe he experienced a similar awareness of people and place. I hope he will again this weekend. Of course, the church in which we worship is remarkably different from when he served Mass as a boy, but the church in which we gathered to celebrate his first Mass in 1992 had also undergone a significant transformation. Too many of the people who once filled the pews are gone, but several remain and others have taken their place, including a young family who were part of Tom's campus ministry community at UW-Stout.

What I wonder is whether there are young people worshipping among us in this generation of our parish who are being shaped, encouraged and challenged as Tom once was. I am hopeful and confident there are. Not that many will become priests, although wouldn't it be wonderful if a one or two, or even three, did! The hope is that our faithful witness, our worship and service, will linger with them, keeping them close to the Church and the mission of discipleship, always recognizing an enduring link to us. **TL**

Partners in Planning LLC
"A goal without a plan is just a wish." -Antoine de Saint-Exupéry
John Knoll
 FINANCIAL PLANNER CFP®, ChFC, RICP
(715) 845-3196
 2100 Stewart Avenue, Suite 150
 Wausau, WI 54401
 Securities offered through Equitable Advisors, LLC (NY, NY 212-314-4600) member FINRA, SIPC. Partners in Planning, LLC is not owned or operated by Equitable Advisors PPG-161625 (8/21)
 Parish Member
www.partnersinplanning.financial

In alliance with
EQUITABLE ADVISORS
MODERN BUILDERS & SUPPLIERS, INC.
Designers & Suppliers of Fine Homes
 Bus. Phones:
 848-3263 or 845-4258
 Fax 842-3623
 3704 W. Stewart Ave.,
 Wausau, WI 54401-3997

GROW YOUR BUSINESS WHILE SUPPORTING YOUR LOCAL PARISH.
 BOOKS
 Purchase a bulletin ad today!

BADGERLAND OVERHEAD DOOR LLC
 Wausau, WI
 Complete overhead door and door opener sales, service & installation
715-581-6358 or 715-551-2673

Malbrit Mechanical, Inc.
715-845-4848
 Heating & Air Conditioning Installation • Service • Repair
www.malbrit.com Since 1946

IMAGE MAKERS
 Professional Styling For Entire Family
 SHARON OSTROWSKI
 Owner
842-3915
 601 S. 3rd, Wausau, WI 54401

FREE AD DESIGN
 WITH PURCHASE OF THIS SPACE
CALL 800.950.9952

BRAINARD FUNERAL HOME
 AND CREMATION CENTER
(715) 845-5525
 Wausau East • Weston
brainardfuneral.com

Prima Fascia Massage Therapy LLC
Rachael Spangler LMT
 Myofascial Release Technique Trigger Point Deep Tissue
715.870.1251
<https://www.facebook.com/primafascia/>

Catholic Financial Life
 Financial Products Offered:
 Life Insurance
 Annuities
 IRAs
 Medicare Advantage,
 Supplements and Part D Insurance*
 Services Offered:
 Family Protection
 401(k) Rollover
Ashley Luczaj
 Catholic Financial Life Advisor
 (715) 432-7156
 15-0049-10/21 Headquartered in Milwaukee, Wis.
 Products and services are not available in all states.
 *Products offered through Catholic Financial Life's Brokerage affiliate, Catholic Brokerage Services Corporation.

PC PORTAL
EXPERIENCED. TRUSTED. SOLUTIONS.
Your Trusted IT Partner Since 2004
715.302.0152 | pcpportal.us

Peterson/Kraemer
Funeral Homes & Crematory Inc.
Wausau East/Wausau West
(715) 845-6900

SUN
PRINT | MAIL | CREATIVE
1800 GRAND AVE • WAUSAU
SUNPRINTING.COM
715-845-4911

Helke
Funeral Home
and Cremation Services
Dean Welker, Parish Member
842-3993 • helke.com
320 Spruce St., Wausau

**As one door closes,
God opens another.**

**Menzner
Hardwoods**
Accepting Employment Applications!
Please apply at
105 Main St., Marathon, WI
715-443-2354

**Cloverbelt
Credit Union**
Great Rates You Can Bank On®
Wausau & Weston
715-842-5693
Parish Members

**FREE
AD DESIGN**
WITH PURCHASE
OF THIS SPACE

**relevant
92.9 FM radio**
Talk Radio for Catholic Life!
Or Listen on-line at
RelevantRadio.com

**If you're looking for a new career,
this may be the opportunity
you've been looking for.**
Tim J. Nowak, FICF
General Agent
(920) 810-6188
timothy.nowak@kofc.org

**ChristianFaith
Book & Gift Shop**
715-359-9639
Schofield, WI
www.facebook.com/
ChristianFaithLifeResources
www.christianfaithlife.com

BENEDICTINE LIVING COMMUNITY
OF WAUSAU
Benedictine Health System
SHORT-TERM REHAB
AND LONG-TERM CARE
1821 N. Fourth Avenue, Wausau, WI
715-675-9451
www.blc.wausau.org

**CALL
800.950.9952**

REACH
Work-from-anywhere
solutions for your home
or mobile office.
715.298.4414
ReachConnects.com

**SUPPORT OUR
ADVERTISERS!**

**Carmelo's
Italian Restaurant**
(715) 845-5570
3607 N Mountain Rd
Wausau
Open 5pm Daily
www.carmelos.wausau.com

LET US HELP PROTECT YOUR DREAMS.
Jamie Schlei Agency, LLC
3806 Schofield Ave Ste 3
Schofield, WI 54476
jschlei@amfam.com
(715) 359-2400

**HOUGUM
LAW FIRM, LLC**
ESTATE PLANNING & ELDER LAW
Asset Protection
Trusts • Wills • Probate
Nursing Home/Medicaid
305 S. 18th Avenue
Ste. 200
Wausau, WI 54401
715.843.5001
hougumlaw.com

THE DIRKS GROUP
Beyond the Network
dirksgroup.com • 715-848-9865

**GROW YOUR
BUSINESS
BY PLACING
AN AD HERE!**
CONTACT US!
Contact Tim Browne
to place an ad today!
tbrowne@4LPi.com
or (800) 950-9952 x2518

**AMERICAN FAMILY
INSURANCE**
24-HOUR CLAIMS REPORTING & CUSTOMER SERVICE 1-800-MYAMFAM (662-6326)
HOME | AUTO | LIFE | BUSINESS | FARM & RANCH | AMFAM.COM

"Don't replace it... Raise it!"
ABLE
Concrete Raising 100 LLC
Industry Leader in Raising & Leveling Concrete
• 25 Years Experience •
Call for estimate: (715) 359-1900

NEW PATIENTS WELCOME
Steven B. DeMille, D.D.S.
Denise L. Long, D.M.D.
Adam Manteuffel, D.D.S.
www.wausaufamilydental.com

**Wausau
FAMILY DENTAL**
715-845-3171
3650 Stewart Ave.
Wausau, WI 54401

**AIRQUALITY
CONTROL**
4007 Central Drive
Wausau, WI 54401
715-845-5111
aqcllc@frontier.com
• Commercial HVAC
• HVAC Facilities Maintenance
• Commercial Kitchen Ventilation
• Industrial Ventilation
• Dust Collection Systems
• Architectural Metal Fabrication
• Light Structural Steel Fabrication
• Sheet Metal Fabrication

**Place Your Ad Here and
Support our Parish!**
Instantly create and
purchase an ad with
AD CREATOR STUDIO
4lpi.com/adcreator

**eyecare
center
of wausau**
611 Stevens Dr.
Wausau, WI
715.848.2020
Dr. Gregory Leischer
Dr. Kelsey Koerner
Dr. Lauren Leurquin
eyecarecenter.wausau.com

State Farm
John Neumueller Ins Agency Inc
John Neumueller
CLU, ChFC, CASL, LUTCF, CPCU, Agent
Offices in Wausau & Marshfield
www.insurance.wausau.wi.com
Bus: 715-675-3324
State Farm, Bloomington, IL
2001739