

ST. ANNE PARISH + 21 August 2022

Ordinary Time 11 12 13 14 15 16 17 18 19 20 21 21 22 23 24 25



AS I OBSERVED in a recent Quick Things, one of the treats of summer is gathering with family and old friends. That even happens as we gather for Mass.

Almost every Sunday this summer someone has introduced themselves and told me they grew up at St. Anne or were one-time parishioners, back in town for a granddaughter's basketball tournament, a gathering of some sort, or just passing through the area.

It's also a treat to welcome children, grandchildren and others who return to visit family and join us for Mass. Along those lines, Fr. Tom Krieg presided at one of our Masses when he was in Wausau a couple weeks ago for a reunion of his Newman Catholic High School class. He is pastor of St. James Parish in Eau Claire, but grew up at St. Anne and appreciated celebrating Mass with us.

This weekend brings another home- See **VISITORS & REFUGEES** on Page 5

"Christ Be Our Light"

Bernadette Farrell



1. Long-ing for light, — we wait in dark-ness. Long-ing for
2. Long-ing for peace, — our world is trou-bled. Long-ing for
3. Long-ing for food, — man-y are hun-gry. Long-ing for



1. truth, — we turn to you. Make us your own, —
2. hope, — man-y de-spair. Your word a-lone —
3. wa-ter, man-y still thirst. Make us your bread, —



1. your ho-ly peo-ple, light for the world to see.
2. has pow'r to save us. Make us your liv-ing voice.
3. bro-ken for oth-ers, shared un-til all are fed.



Christ, be our light! Shine in our hearts. Shine through the dark-ness.



Christ, be our light! Shine in your church gath-ered to-day.



The **REALLY GOOD NEWS** is that we have pledges totaling nearly 90 percent of our **INSPIRED BY THE SPIRIT** goal.

The **NOT-SO-GOOD NEWS** is that those pledges are from just 16 percent of our parishioners.

But, then, the **HOPEFUL NEWS** is that you might be among the parishioners who have yet to make a pledge, and that this might be the week to turn hope into reality. As you consider your pledge, here's an important reminder from John Knoll, one of our parish campaign co-chairs: *In considering my family's pledge, it was important to recognize that the commitment is spread over five years, but not a one-time contribution. For those who haven't pledged yet, please consider a contribution of \$45 a month over these next five years.*

Pledge forms were mailed recently to parishioners who have not pledged. Brochures and pledge forms also are available at church entrances. Links to more information can be found in the Quick Things email. **THANK YOU!**



ST. ANNE PARISH

Living the Gospel with love and courage.

715.849.3930 | stanneswausau.org
700 W. Bridge St., Wausau WI 54401
Parish Office Hours: 9A-4P Mon-Thurs

Fr. Tom Lindner, Pastor

frtom@stanneswausau.org | Ext. 309

Deacon Erv Burkhardt

ervb@stanneswausau.org | Ext. 303

Kristine Lato, Liturgy Coordinator
& Administrative Assistant

kristinek@stanneswausau.org | Ext. 307

John Schmitt, Lee Ann Lella

Disciple Formation Co-Directors

johns@stanneswausau.org | Ext. 306

leeannl@stanneswausau.org | Ext. 308

Paul Hoffer, Finance Director

paulh@stanneswausau.org | Ext. 310

Newman Catholic Schools

Jeff Gulan, President

www.NewmanCatholicSchools.com

715.845.5735

Pastoral Council

Jenny Bruening, Julie Bunczak,

Tony Cicha, Sandy Gilge, Kendall Gullo,

Cec Holmberg, Doug Holmberg,

Deb Jarosz, Gary Jarosz, John Lang, Kathy

Maves, Evie Nielsen, John Prey,

Elizabeth Waggoner, Jill Warsaw,

Deacon Erv Burkhardt, Fr. Tom Lindner

Finance Council

Mary Bethke, Tom Erickson, Tim Gierl,

Susan Imm, Gary Jarosz, Bill Lewandowski,

Buddy Watford, Ann Waraksa,

Paul Hoffer, Fr. Tom Lindner

JOINING OUR PARISH: Fr. Tom is eager to talk with you about parish membership. Contact him at frtom@stanneswausau.org or 849.3930.

CELEBRATING BAPTISM: We gladly welcome children to faith through the waters of Baptism. To learn more about celebrating your child's baptism, send an email or call Fr. Tom. Parents celebrating the baptism of their first child are asked to complete a baptism orientation seminar.

CELEBRATING MARRIAGE: We eagerly welcome couples seeking to celebrate the Sacrament of Marriage. Contact Fr. Tom to talk about scheduling your wedding and to learn about marriage preparation.

CARING FOR THE SICK: If you or a loved one are seriously ill or anticipating surgery, please call or email Fr. Tom to schedule the celebration of the sacrament of Anointing of the Sick.

RECONCILIATION: This sacrament of God's healing mercy is celebrated at 9 a.m. Saturday, and by appointment with Fr. Tom.

Glory to God

Glory to God in the highest,

and on earth peace to people of good will.

We praise you, we bless you, we adore you, we glorify you,

we give you thanks for your great glory,

Lord God, heavenly King, O God, almighty Father.

Lord Jesus Christ, Only Begotten Son,

Lord God, Lamb of God, Son of the Father,

you take away the sins of the world, have mercy on us;

you take away the sins of the world, receive our prayer;

you are seated at the right hand of the Father, have mercy on us.

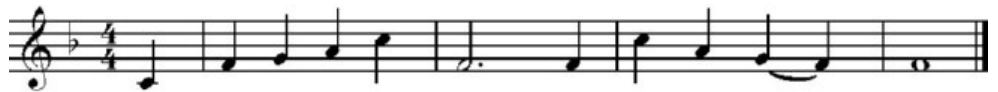
For you alone are the Holy One, you alone are the Lord,

you alone are the Most High, Jesus Christ, with the Holy Spirit,

in the glory of God the Father. Amen.

Psalm 117

Michel Guimont



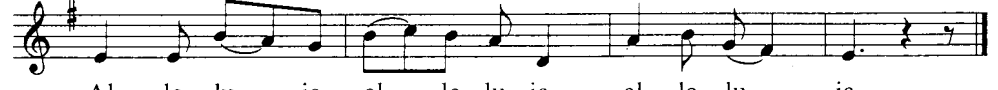
Go out to all the world and tell the Good News.

Gospel Acclamation

Mass of the Angels and Saints, Steven Janco



Al - le - lu - ia, al - le - lu - ia, al - le - lu - ia.



Al - le - lu - ia, al - le - lu - ia, al - le - lu - ia.

Profession of Faith (The Apostles' Creed)

I believe in God, the Father almighty, Creator of heaven and earth,

and in Jesus Christ, his only Son, our Lord,

who was conceived by the Holy Spirit, born of the Virgin Mary,

suffered under Pontius Pilate, was crucified, died and was buried;

he descended into hell; on the third day he rose again

from the dead; he ascended into heaven,

and is seated at the right hand of God the Father almighty;

from there he will come to judge the living and the dead.

I believe in the Holy Spirit, the holy catholic Church,

the communion of saints, the forgiveness of sins,

the resurrection of the body, and life everlasting. Amen.

KNEELING & STANDING: Please remember that people at pews with kneelers, if able, are asked to kneel after the Holy, Holy and to stand at the Great Amen. People at chairs without kneelers, if able, are asked to remain standing - out of reverence - throughout the Eucharistic Prayer.

WE BOW TO THE ALTAR: The altar is the primary focal point as we gather for worship. Arriving or departing, we show reverence to the altar by bowing toward it before entering and leaving the pew. People standing at chairs without kneelers during the eucharistic prayer are encouraged to bow after the priest presents the bread and wine that have become the Body of Christ and the Blood of Christ. We bow as the priest genuflects.

We genuflect as we pass or approach the tabernacle as a profound way of acknowledging the presence of Christ in the sacrament being reserved in it. Genuflection involves kneeling briefly on one knee.

“I Will Rest in You”

Vallimar and Frank Jansen

MARK YOUR CALENDARS: The composers of this hymn, Vallimar and Frank Jansen, will be with us for three Advent evenings of song and reflection—Dec. 12-13-14.

I will rest in you, O Lord; I will
rest in you, O Lord. I will lay down be-fore you my
heav-y bur-dens; I will rest in you, O Lord.

Mass of the Angels and Saints

Steven Janco

Holy, Holy

Ho - ly, Ho - ly, Ho - ly Lord God of
hosts. Heav'n and earth are full of your glo - ry. Ho -
san - na, ho - san - na, ho - san - na in the
high - est, ho - san - na, ho - san - na, ho -
san - na in the high - est. Bless - ed is he who comes in the
name of the Lord. Ho - san - na, ho -
san - na, ho - san - na in the high - est, ho -
san - na, ho - san - na, ho - san - na in the high - est.

Mystery of Faith

We pro - claim your Death, O Lord, and pro -
fess your Res - ur - rec - tion un - til you come a - gain.

Amen

A - men, a - men, a - men.
A - men, a - men, a - men.

Transitions

ETERNAL LIFE: We pray for the eternal rest of **Fred Jewell** who died recently. May he rest in the peace of the Risen Lord.

This Week

MONDAY 22 AUG / 2 Thes 1:1-5, 11-12/Mt 23:13-22

TUESDAY 23 AUG / 2 Thes 2:1-3,14-17/Mt 23:23-26

• 7 AM - Communion Service

WEDNESDAY 24 AUG / Rv 21:9-14/Jn 1:45-51

• 8:15 AM - MASS +Lawrence Rebman

THURSDAY 25 AUG / 1 Cor 1:1-9/Mt 24:42-51

• 7 AM - MASS +James Radtke

FRIDAY 26 AUG / 1 Cor 1:17-25/Mt 25:1-13

• 7 AM - MASS +James Dickinson

SATURDAY 27 AUG / 1 Cor 1:26-31/Mt 25:14-30

• 9 AM - Reconciliation

TWENTY-SECOND SUNDAY IN ORDINARY TIME | 27/28 AUG

Sir 3:17-18,20,28-29/Heb 12:18-19, 22-24/Lk 14:1, 7-14

• 4 PM Saturday +Gerald Klopotek

• 8:30 AM Sunday +Warren Eschenbach
-LIVESTREAM

• 10:30 AM Sunday +Isidoro & Felomina Carpen-tero

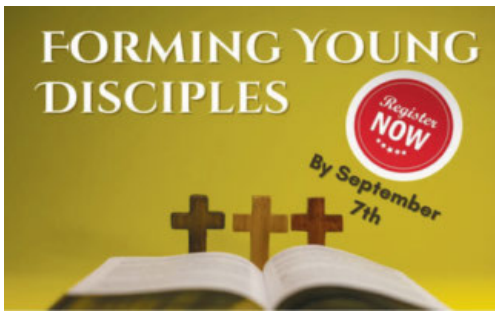
• 6 PM Sunday - People of St. Anne Parish

Links to the daily readings listed above, as well as video and audio reflections can be found at stanneswausau.org.

Stewardship

A PROFOUND QUESTION initiates today's gospel: "Lord, will only a few people be saved?" Jesus offers only a simple reply: Strive to enter through the narrow gate. Many will try to enter and will not be able. Good stewards know there is only one, narrow gate. Not everything will fit. This narrow gate has no room for our accomplishments. No room for our money. No room for our possessions. No room for anything else but those who've been good stewards of the Gospel. We can't custom build our own gates either. There is only one, narrow gate that happens to be open for a time, but for how long? What is our plan of action to get through that gate?

— International Catholic Stewardship Council



REGISTRATION is under way for Forming Young Disciples, the parish's Wednesday night faith formation program for children in kindergarten through Grade 10. Complete information can be found at stanneswausau.org.

MAKING IT HAPPEN: Parishioners are invited to enter the "faith space" of helping to form our parish's young disciples. To learn more, send an email to johns@stanneswausau.org or leeanni@stanneswausau.org, and watch last week's Quick Things video.

COMMUNITY MEALS

will resume Sept. 15. These are meals served at St. Matthew Church to people of the community who need and appreciate a nutritious meal and camaraderie. St. Anne parishioners will serve Community Meals in alternating months.



People are needed to help at the meals and to prepare desserts. If you can help make this happen or to learn more, send an email to candbgiebel@gmail.com or dparlier77@gmail.com.

SHARING

GRIEF: People who are grieving the death of a spouse, a family member or close friend are invited to participate in GriefShare, a program offered on Zoom over 14 weeks in which a friendly, caring group of people offer guidance and encouragement to those dealing with one of life's most difficult experiences. St. Anne offers GriefShare at 6 p.m. Mondays. To learn more about GriefShare or to register, send an email to bosdad.johnson2@gmail.com.



VISITING TOGETHER: Pope Francis recently spoke of the need to visit and honor older members of the community. In his remarks, Pope Francis says "visiting the elderly must be done by many, together and often. Fr. Tom is anticipating visits to homebound parishioners, and those in care centers, in the late summer or early fall, which raises the question - Might there be parishioners willing to join him - visiting together? If so, please call Fr. Tom or send an email to frtom@stanneswausau.org.



"Take Your Place at the Table"

Collegeville Composers Group

Take your place at the ta - ble; ———

serve one an - o - ther in just-ice; ———

do this and you — shall live.

Verses

All:

...do this and you — shall live.

"How Can I Keep from Singing"

Robert Lowry

1. My life flows on in end-less song. A -
2. Through all the tu - mult and the strife I

bove earth's lam - en - ta - tion I hear the clear though
hear that mu - sic ring - ing. It finds an ech - o

far - off hymn That hails a new cre - a - tion.
in my soul. How can I keep from sing - ing?

No storm can shake my in-most calm While to that Rock I'm
cling - ing. Since Christ is Lord of heav-en and earth,

How can I keep from sing - ing?

VISITORS & REFUGEES / from Page 1

coming of sorts. It's been several years, but Fr. John Parr was once pastor of Holy Name and St. Matthew parishes and so is familiar with Wausau and many people in its Catholic community. I've known Fr. Parr since my seminary days when he was the diocesan vocation director, the person who helps encourage and oversee guys making their way to ordination. He's been a good friend ever since and I'm grateful he'll join us as I enjoy my annual week in Central Michigan.

Before he retired in January, Fr. Parr was pastor of St. Elizabeth Ann Seton Parish in Holmen. Now he's graciously filling in as needed and enjoying lots and lots of baseball games. To that end, he is cautiously optimistic that the Brewers will have a long, strong run this fall.

In what may have been his last time with us at St. Anne, Fr. Parr preached a six-part series on the Eucharist on Aug. 4, 2011. Those presentations "live" on the internet and you can find links in the Quick Things email. You'll notice the content is as significant as ever and that Fr. Parr, remarkably, hasn't gotten any older.

THE AGENCY CHARGED with settling refugees in Central Wisconsin is anticipating the arrival this fall of new individuals and families who have fled Syria, Congo and Somalia in the last few or several years. It's important to remember that the vast majority of the world's refugees live in vast camps awaiting re-

settlement. The more immediate evacuation and resettlement of Afghan refugees is not the norm.

The successful re-settlement of these new neighbors will require the assistance and encouragement of local sponsoring organizations. Two strong and generous group of St. Anne parishioners have been very successful in helping two Afghan families settle into life in Wausau. The question is are there sufficient



people to help do it again – to welcome one of the new families who will soon be moving here? One important lesson we've learned from our initial sponsoring parishioners is that it is doable, and it is immensely rewarding – for the new neighbors and the sponsorship team!

Any parishioners interested in learning more about the big picture of refugees and refugee resettlement and the feasibility of sponsoring another refugee family are encouraged to attend a meeting at 6:30 p.m. Thursday, Sept. 8 in the Gathering Space. This is an introductory, learning opportunity meant to help parishioners begin to discern whether a commitment can be made to sponsoring new refugees. If you have immediate questions, please send me an email — frtom@stanneswau-sau.org. **TL**

Partners in Planning LLC
"A goal without a plan is just a wish." -Antoine de Saint-Exupéry
John Knoll
 FINANCIAL PLANNER CFP®, ChFC, RICP
(715) 845-3196
 2100 Stewart Avenue, Suite 150
 Wausau, WI 54401
 Securities offered through Equitable Advisors, LLC (NY, NY 212-314-4600) member FINRA, SIPC. Partners in Planning, LLC is not owned or operated by Equitable Advisors PPG-161625 (8/21)
 Parish Member
www.partnersinplanning.financial

In alliance with
EQUITABLE ADVISORS

GROW YOUR BUSINESS WHILE SUPPORTING YOUR LOCAL PARISH.

 Purchase a bulletin ad today!

BADGERLAND OVERHEAD DOOR LLC
 Wausau, WI
 Complete overhead door and door opener sales, service & installation
715-581-6358 or 715-551-2673

MODERN BUILDERS & SUPPLIERS, INC.
 Designers & Suppliers of Fine Homes
 Bus. Phones: 848-3263 or 845-4258
 Fax 842-3623
 3704 W. Stewart Ave., Wausau, WI 54401-3997

Malbrit Mechanical, Inc.
715-845-4848
 Heating & Air Conditioning Installation • Service • Repair
www.malbrit.com Since 1946

IMAGE MAKERS
 Professional Styling For Entire Family
 SHARON OSTROWSKI Owner
842-3915
 601 S. 3rd, Wausau, WI 54401

FREE AD DESIGN
 WITH PURCHASE OF THIS SPACE
CALL 800.950.9952

BRAINARD FUNERAL HOME
 AND CREMATION CENTER
(715) 845-5525
 Wausau East • Weston
brainardfuneral.com

Prima Fascia Massage Therapy LLC
Rachael Spangler LMT
 Myofascial Release Technique Trigger Point Deep Tissue
715.870.1251
<https://www.facebook.com/primafascia/>

Ashley Luczaj
 Catholic Financial Life Advisor
 (715) 432-7156
 15-0049-10/21 Headquartered in Milwaukee, Wis. Products and services are not available in all states. *Products offered through Catholic Financial Life's Brokerage affiliate, Catholic Brokerage Services Corporation.

Catholic Financial Life
 Financial Products Offered:
 Life Insurance
 Annuities
 IRAs
 Medicare Advantage, Supplements and Part D Insurance*
 Services Offered:
 Family Protection
 401(k) Rollover



PC PORTAL
EXPERIENCED. TRUSTED. SOLUTIONS.
Your Trusted IT Partner Since 2004
715.302.0152 | pcportal.us




Peterson/Kraemer
Funeral Homes & Crematory Inc.
Wausau East/Wausau West
(715) 845-6900



OSUN
PRINT | MAIL | CREATIVE
1800 GRAND AVE • WAUSAU
SUNPRINTING.COM
715-845-4911



Helke
Funeral Home
and Cremation Services
Dean Welker, Parish Member
842-3993 • helke.com
320 Spruce St., Wausau



**As one door closes,
God opens another.**

**Menzner
Hardwoods**
Accepting Employment Applications!
Please apply at
105 Main St., Marathon, WI
715-443-2354



**Cloverbelt
Credit Union**
Great Rates You Can Bank On®
Wausau & Weston
715-842-5693
Parish Members

**FREE
AD DESIGN**
WITH PURCHASE
OF THIS SPACE



**relevant
92.9 FM radio**
Talk Radio for Catholic Life!
Or Listen on-line at
RelevantRadio.com

**If you're looking for a new career,
this may be the opportunity
you've been looking for.**

Tim J. Nowak, FICF
General Agent
(920) 810-6188
timothy.nowak@kofc.org



Learn more about becoming a
Knight of Columbus
field agent: kofc.org/careers



**Knights of
Columbus**

SEE DISABILITY INCOME LONG-TERM CARE RETIREMENT LIFE DISABILITY INCOME LONG-TERM CARE RETIREMENT



715-359-9639
Schofield, WI
www.facebook.com/
ChristianFaithLifeResources
www.christianfaithlife.com



**BENEDICTINE LIVING COMMUNITY
OF WAUSAU**
Benedictine Health System
SHORT-TERM REHAB
AND LONG-TERM CARE
1821 N. Fourth Avenue, Wausau, WI
715-675-9451
www.blc.wausau.org

**CALL
800.950.9952**

REACH
Work-from-anywhere
solutions for your home
or mobile office.
715.298.4414
ReachConnects.com

**SUPPORT OUR
ADVERTISERS!**



**Carmelo's
Italian Restaurant**
(715) 845-5570
3607 N Mountain Rd
Wausau
Open 5pm Daily
www.carmelos.wausau.com

LET US HELP PROTECT YOUR DREAMS.

Jamie Schlei Agency, LLC
3806 Schofield Ave Ste 3
Schofield, WI 54476
jschlei@amfam.com
(715) 359-2400

**AMERICAN FAMILY
INSURANCE**

24-HOUR CLAIMS REPORTING & CUSTOMER SERVICE 1-800-MYAMFAM (662-6326)
HOME | AUTO | LIFE | BUSINESS | FARM & RANCH AMFAM.COM

American Family Mutual Insurance Company, S.S. and its Operating Companies, American Family Insurance Company, American Family Life Insurance Company, 6000 American Parkway, Madison, WI 53705 010000 - New 2/17 020115 - 9501919

REACH
Work-from-anywhere
solutions for your home
or mobile office.
715.298.4414
ReachConnects.com

**LIFE GOES BY
in a flash
LIVE BRILLIANTLY!**



JIM KRYSHAK JEWELERS
Diamonds Fine Jewelry
715.241.7557 • 226500 Rib Mountain Dr. • Wausau, WI

**GROW YOUR
BUSINESS
BY PLACING
AN AD HERE!**

CONTACT US!

Contact Tim Browne
to place an ad today!
tbrowne@4LPi.com
or (800) 950-9952 x2518



LET US HELP PROTECT YOUR DREAMS.

Jamie Schlei Agency, LLC
3806 Schofield Ave Ste 3
Schofield, WI 54476
jschlei@amfam.com
(715) 359-2400

**AMERICAN FAMILY
INSURANCE**

24-HOUR CLAIMS REPORTING & CUSTOMER SERVICE 1-800-MYAMFAM (662-6326)
HOME | AUTO | LIFE | BUSINESS | FARM & RANCH AMFAM.COM


American Family Mutual Insurance Company, S.S. and its Operating Companies, American Family Insurance Company, American Family Life Insurance Company, 6000 American Parkway, Madison, WI 53705 010000 - New 2/17 020115 - 9501919

"Don't replace it... Raise it!"

ABLE
Concrete Raising 100 LLC

Industry Leader in Raising & Leveling Concrete

• 25 Years Experience •
Call for estimate: (715) 359-1900



**HOUGUM
LAW FIRM, LLC**
ESTATE PLANNING & ELDER LAW

Asset Protection
Trusts • Wills • Probate
Nursing Home/Medicaid

305 S. 18th Avenue
Ste. 200
Wausau, WI 54401
715.843.5001
hougumlaw.com



THE DIRKS GROUP
Beyond the Network
dirksgroup.com • 715-848-9865



715-845-3171
3650 Stewart Ave.
Wausau, WI 54401

NEW PATIENTS WELCOME
Steven B. DeMille, D.D.S.
Denise L. Long, D.M.D.
Adam Manteuffel, D.D.S.
www.wausaufamilydental.com



4007 Central Drive
Wausau, WI 54401
715-845-5111
aqcllc@frontier.com

- Commercial HVAC
- HVAC Facilities Maintenance
- Commercial Kitchen Ventilation
- Industrial Ventilation
- Dust Collection Systems
- Architectural Metal Fabrication
- Light Structural Steel Fabrication
- Sheet Metal Fabrication

**Place Your Ad Here and
Support our Parish!**

Instantly create and
purchase an ad with

AD CREATOR STUDIO



4lpi.com/adcreator




611 Stevens Dr.
Wausau, WI
715.848.2020

Dr. Gregory Leischer
Dr. Kelsey Koerner
Dr. Lauren Leurquin
eyecarecenter.wausau.com




John Neumueller Ins Agency Inc
John Neumueller
CLU, ChFC, CASL, LUTCF, CPCU, Agent
Offices in Wausau & Marshfield
www.insurance.wausau.wi.com
Bus: 715-675-3324

State Farm, Bloomington, IL
2001739