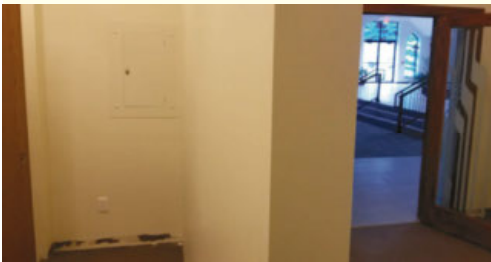


**ST. ANNE PARISH + 4 September 2022**  
**Ordinary Time 11 12 13 14 15 16 17 18 19 20 21 22 23 24 25 26**



**SOME FRIENDS MOVED** to DePere back in late winter. They had to wait for construction of their new home to be completed, and even then things weren't quite finished. The house had doors and windows, carpet and tile, and a furnace, but not much else. They moved in their furniture, but were without kitchen appliances until late May. The landscaper did-



n't plant their lawn until July.

It was a series of steps. Just a couple weeks ago, they report, they felt like the construction and furnishing was complete.

We've experienced, or still are experiencing, something similar with our church renovation. We've moved in, the project is 95 percent complete, more or less, but there are still some significant details left undone. Most of them aren't readily apparent, but when we look closely, or as time evolves, some unfinished business becomes more visible.

What remains to do hasn't changed much since an initial accounting in late-June. Delays are largely due to supply-chain restrictions, as well as more immediate projects demanding our contractor's attention. Labor Day weekend seems like an appropriate time to review the progress of our renovation labor.

Work is anticipated in the next week or so in the Gathering Space where rail- See **UNFINISHED** on Page 5

On the first two Sundays of September we are gathering items for The Neighbor's Place. Bring donations along to Mass or drop them in the Gathering Space during the week. Learn more about this week's beneficiary at [neighborsplace.org](http://neighborsplace.org). These are the items needed now:



- Unopened diapers, size 3-7
- Pull-ups
- Cloth diaper supplies
- Baby wipes
- Baby hygiene supplies
- Unopened baby formula
- Feminine hygiene supplies or adult incontinence products.
- All-purpose cleaners
- Toothbrushes and toothpaste
- Shampoo, soap, deodorant
- Laundry soap
- Disinfectant
- Toilet paper, towels

**REGISTRATION** is under way for Forming Young Disciples, the parish's Wednesday night program for children in kindergarten through Grade 10. The deadline is Sept. 7. Complete information is at [stanneswausau.org/youngdisciple](http://stanneswausau.org/youngdisciple).



**MAKING IT HAPPEN:** Parishioners are invited to share in the important ministry of forming young disciples. To learn more, send an email to [johns@stanneswausau.org](mailto:johns@stanneswausau.org) or [leeannl@stanneswausau.org](mailto:leeannl@stanneswausau.org), or watch the recent Quick Things conversation "Why Be a Catechist?" There's a link at the web site.

**"Take Up Your Cross"**

Charles W. Everest



1. Take up your cross, the Sav-ior said, If you would  
 2. Take up your cross, let not its weight Fill your weak  
 3. Take up your cross, heed not the shame, And let your  
 4. Take up your cross, then, in his strength, And calm-ly  
 5. Take up your cross, and fol-low Christ, Nor think till



my dis-ci-ple be; Take up your cross with will-ing  
 spir-it with a-larm; His strength shall bear your spir-it  
 fool-ish heart be still; The Lord for you ac-cept-ed  
 ev-'ry dan-ger brave; It guides you to a bet-ter  
 death to lay it down; For on-ly those who bear the



heart, And hum-bly fol-low af-ter me.  
 up, And brace your heart and nerve your arm.  
 death Up-on a cross, on Cal-v'ry's hill.  
 home And leads to vic-t'ry o'er the grave.  
 cross May hope to wear the glo-rious crown.

# This Week

**MONDAY 5 SEPT** / Cor 5:1-8/Lk 6:6-11

• Labor Day - Parish Office closed

**TUESDAY 6 SEPT** / 1 Cor 6:1-11/Lk 6:12-19

• 7 AM - Communion Service

**WEDNESDAY 7 SEPT** / 1 Cor 7:25-31/Lk 6:20-26

• 8:15 AM - Mass +Carol Brady

**THURSDAY 8 SEPT** / Rom 8:28-30/Mt 1:18-23

• 8:15 AM - Mass +Ruth Ellen Stencil

• 6:30 PM - Welcoming New Neighbors informational meeting, Gathering Space

**FRIDAY 9 SEPT** / 1 Cor 9:16-19,22-27/Lk 6:39-42

• 7 AM - Mass +Ed, Gert, & Dawn Burek

**SATURDAY 10 SEPT** / 1 Cor 10:14-22/Lk 6:43-49

• 9 AM Reconciliation

**TWENTY-FOURTH SUNDAY IN ORDINARY TIME | 10/11 SEPT**

Wis 9:13-18/Phlm 9-10,12-17/Lk 14:25-33

• 4 PM Saturday +Dale Robinson

• 8:30 AM Sunday +Ann Knoeck -LIVESTREAM

• 10:30 AM Sunday -People of St. Anne Parish

• 6 PM Sunday +Ruth & Dave Stencil

Links to the daily readings listed above, as well as video and audio reflections can be found at [stanneswausau.org](http://stanneswausau.org).



## ST. ANNE PARISH

Living the Gospel with love and courage.

715.849.3930 | [stanneswausau.org](http://stanneswausau.org)

700 W. Bridge St., Wausau WI 54401  
Parish Office Hours: 9A-4P Mon-Thurs

Fr. Tom Lindner, Pastor

[frtom@stanneswausau.org](mailto:frtom@stanneswausau.org) | Ext. 309

**JOINING OUR PARISH:** Fr. Tom is eager to talk with you about parish membership. Contact him at [frtom@stanneswausau.org](mailto:frtom@stanneswausau.org) or 849.3930.

**CELEBRATING BAPTISM:** We gladly welcome children to faith through the waters of Baptism. To learn more about celebrating your child's baptism, send an email or call Fr. Tom. Parents celebrating the baptism of their first child are asked to complete a baptism orientation seminar.

**CELEBRATING MARRIAGE:** We eagerly welcome couples seeking to celebrate the Sacrament of Marriage. Contact Fr. Tom to talk about scheduling your wedding and to learn about marriage preparation.

**CARING FOR THE SICK:** If you or a loved one are seriously ill or anticipating surgery, please call or email Fr. Tom to schedule the celebration of the sacrament of Anointing of the Sick.

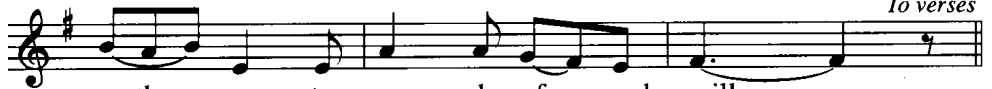
**RECONCILIATION:** This sacrament of God's healing mercy is celebrated at 9 a.m. Saturday, and by appointment with Fr. Tom.

### Glory to God

Mass of the Angels and Saints, Steven Janco



Glo - ry to God in the high - est, and on



earth peace to peo - ple of good will.

*To verses*



*Cantor, then All (Last time)*

A - men.

1. We praise you, we bless you, we adore you, we glorify you, we give you thanks for your great glory, Lord God, heavenly King, O God, almighty Father.
2. Lord Jesus Christ, Only Begotten Son, Lord God, Lamb of God, Son of the Father, you take away the sins of the world, have mercy on us; you take away the sins of the world, receive our prayer; you are seated at the right hand of the Father, have mercy on us.
3. For you alone are the Holy One, you alone are the Lord, you alone are the Most High, Jesus Christ, with the Holy Spirit, in the glory of God the Father.

### Psalm 90: "In Every Age, O Lord"

Collegetown Composers Group



In e - v'ry age, O Lord, you have been our re - fuge.

### Gospel Acclamation

Mass of the Angels and Saints, Steven Janco



Al - le - lu - ia, al - le - lu - ia, al - le - lu - ia.



Al - le - lu - ia, al - le - lu - ia, al - le - lu - ia.

### Profession of Faith (The Apostles' Creed)

I believe in God, the Father almighty, Creator of heaven and earth, and in Jesus Christ, his only Son, our Lord, who was conceived by the Holy Spirit, born of the Virgin Mary, suffered under Pontius Pilate, was crucified, died and was buried; he descended into hell; on the third day he rose again from the dead; he ascended into heaven, and is seated at the right hand of God the Father almighty; from there he will come to judge the living and the dead. I believe in the Holy Spirit, the holy catholic Church, the communion of saints, the forgiveness of sins, the resurrection of the body, and life everlasting. Amen.

**LINKS TO THE READINGS PROCLAIMED** at Mass are included in the Quick Things email sent to parishioners every Wednesday. Reviewing these scripture passages before Sunday prepares us to listen to them with greater attention and understanding. If you are not getting the weekly email, let us know by sending an email to [mail@stanneswausau.org](mailto:mail@stanneswausau.org).



## "In Every Age"

Psalm 90, Janet Sullivan Whitaker

In ev - 'ry age, O God, you have been our ref - uge.  
In ev - 'ry age, O God, you have been our hope.

**KNEELING & STANDING:** Please remember that people at pews with kneelers, if able, are asked to kneel after the Holy, Holy and to stand at the Great Amen. People at chairs without kneelers, if able, are asked to remain standing - out of reverence - throughout the Eucharistic Prayer. At communion time, we remain standing, as a sign of unity, until everyone has received communion.

## Mass of the Angels and Saints

Steven Janco

Holy, Holy

Ho - ly, Ho - ly, Ho - ly Lord God of  
hosts. Heav'n and earth are full of your glo - ry. Ho -  
san - na, ho - san - na, ho - san - na in the  
high - est, ho - san - na, ho - san - na, ho -  
san - na in the high - est. Bless - ed is he who comes in the  
name of the Lord. Ho - san - na, ho -  
san - na, ho - san - na in the high - est, ho -  
san - na, ho - san - na, ho - san - na in the high - est.

Mystery of Faith

We pro - claim your Death, O Lord, and pro -  
fess your Res - ur - rec - tion un - til you come a - gain.

Amen

A - men, a - men, a - men.  
A - men, a - men, a - men.



**THANKS TO THOSE WHO LABOR:** This is a good weekend to acknowledge and THANK those parishioners whose laboring throughout the summer has allowed us to worship each Lord's Day, as well as enhanced the landscaping and environment of our church—inside and out.

Our gratitude extends to the many ministers at Mass – cantors, accompanists, welcome ministers, eucharistic ministers, readers, servers and livestream ministers, as well as gardeners, church environment ministers and others who tend to ongoing needs of the parish, whether for a season or throughout the year.

## THANK YOU!

### PARTICIPATION AT MASS

Aug. 27/28

4 PM - 127; 8:30 AM - 162  
10:30 AM - 101; 6 PM - 128; Online - 124

Aug. 20/21

4 PM - 140; 8:30 AM - 152  
10:30 AM - 124; 6 PM - 109; Online - 147

Aug. 13/14

4 PM - 124; 8:30 AM - 135  
10:30 AM - 91; 6 PM - 111; Online - 141

### ST. ANNE PARISH GIVING

Total collected Aug. 28: \$10,515  
Weekly need: \$15,773

Total collected (since July 1, 2022): \$120,586  
Amount needed: \$137,773  
Shortfall: \$ 17,187

**MISSION APPEAL:** Parishioners contributed \$2,466 to the recent mission appeal by Fr. Thomas Nirappel to support the Missionaries of St. Francis de Sales in their ministry of educating poor children in northeast India.



Pledges & Contributions: \$784,740  
Target: \$905,000  
Remaining: \$120,260  
Percent of goal pledged: 87%

**THANK YOU TO THOSE WHO HAVE ALREADY PLEDGED! IF YOU HAVEN'T PLEDGED, WOULD YOU PLEASE DO SO THIS WEEK?**



**MEETING ON THURSDAY TO CONSIDER WELCOMING MORE NEW NEIGHBORS**

There are 27 million refugees in the world, many in camps for years, some for decades; all of them hoping to be welcomed somewhere, by someone, someday. The agency working to re-settle refugees in Wausau is seeking sponsoring organizations to join this effort. It's what two groups of St. Anne parishioners have been doing for the past six months welcoming new neighbors from Afghanistan.

The process of welcoming refugees begins with learning about the plight of refugees and considering what refugee sponsorship entails. An informational meeting to initiate this discernment process will be at 6:30 p.m. Thursday, Sept. 8 in the Gathering Space. If you are interested in learning more, please plan to attend.

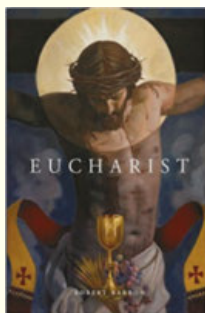
**COMMUNITY MEALS**

will resume Sept. 15. These are meals served at St. Matthew Church to people of the community who need and appreciate a nutritious meal and camaraderie. St. Anne parishioners will serve Community Meals in alternating months.



People are needed to help at the meals and to prepare desserts. If you can help make this happen or to learn more, send an email to [candbgiebel@gmail.com](mailto:candbgiebel@gmail.com) or [dparlier77@gmail.com](mailto:dparlier77@gmail.com).

**FALL BOOK CLUB:** In anticipation of a multi-year focus on the Eucharist by the U.S. Bishops, parishioners are invited to join a fall discussion of "Eucharist," a book by Bishop Robert Barron. What is the Eucharist, what are its many dimensions, what does it mean to be a eucharistic people? These are among the questions Bishop Barron addresses and the group will discuss in every-other-week gatherings at 6:30 p.m. Tuesdays on Zoom beginning Sept. 20. If you're interested, send an email to Fr. Tom and purchase the book from a local bookseller or online.



**"Take Your Place at the Table"**

Collegetville Composers Group

Take your place at the ta - ble; \_\_\_\_\_  
 serve one an - o - ther in just-ice; \_\_\_\_\_  
 do this and you \_\_\_\_\_ shall live.

Verses *All:*  
 ...do this and you \_\_\_\_\_ shall live.

**"Lord of All Hopefulness"**

Jan Struther

1. Lord of all hope - ful - ness, Lord of all joy,  
 2. Lord of all ea - ger - ness, Lord of all faith,  
 3. Lord of all kind - li - ness, Lord of all grace,  
 4. Lord of all gen - tle - ness, Lord of all calm,

Whose trust, ev - er child-like, no cares could de - stroy,  
 Whose strong hands were skilled at the plane and the lathe,  
 Your hands swift to wel - come, your arms to em - brace,  
 Whose voice is con - tent - ment, whose pres - ence is balm,

Be there at our wak - ing, and give us, we pray,  
 Be there at our la - bors, and give us, we pray,  
 Be there at our hom - ing, and give us, we pray,  
 Be there at our sleep - ing, and give us, we pray,

Your bliss in our hearts, Lord, at the break of the day.  
 Your strength in our hearts, Lord, at the noon of the day.  
 Your love in our hearts, Lord, at the eve of the day.  
 Your peace in our hearts, Lord, at the end of the day.

Music reprinted under ONE LICENSE #A-729229.

**THE SUNDAY READINGS** will be read, discussed and prayed over in a weekly gathering at 6:30 p.m. Tuesdays beginning Sept. 20 in the Gathering Space. It's a great way to anticipate hearing the readings proclaimed at Mass and to gain a deeper awareness into the meaning and power of God's word. All are welcome!





# Welcoming WELCOME MINISTERS

The first of the many ministers who make our Lord's Day worship possible are the Welcome Ministers who greet people arriving for Mass and help to gather the collection. More parishioners are needed to join in this essential ministry. Orientation for new and returning Welcome Ministers will be at 5 p.m. and 6:30 p.m. on Thursday, Sept. 15 in church. Please consider this need and your participation.



**BECOMING CATHOLIC  
BECOMING CHRISTIAN**

If you're interested in learning more about Jesus, the Catholic Church, becoming a Catholic Christian and what it means to be a disciple of Jesus, we'd love to talk with you. You might be baptized in another Christian church and be interested in becoming Catholic, or someone who has never been baptized. To learn more, contact Lee Ann Lella, a co-director of disciple formation, at [leeannl@stanneswau-sau.org](mailto:leeannl@stanneswau-sau.org).

## UNFINISHED / from Page 1

ings, matching those in the church, will be installed on the stairs going into the Baptistry. These railings will more closely align with the doors and thus be more helpful for people who need them. In addition, new lights will be installed in the main entranceway.

Lighting controls and emergency egress lighting remain unavailable and may not be delivered and installed until mid-October. This restricts how we turn lights on and off, as well as the ability to dim or brighten lights. Lights over the Baptismal Font, for example, must be turned on in an attic over the entranceway coat racks – not the most convenient arrangement. Supply issues also are affecting installation of a new, more sleek microphone for the ambo.

Further into church we are still waiting for kneelers to be installed at rows across the middle of the church, as well as partitions and

kneelers at the front pews. There's been no word on when this will be completed.

Better progress is reported in renovation of the former Blessed Sacrament Chapel. A divider has been constructed creating a Reconciliation Room in the area just inside the main doors, and a vesting sacristy for the presider and deacon behind the partition. For the time being, Reconciliation is celebrated in the library, but will move to the new location, hopefully, by mid-September.

In addition, a new ambry — where the holy oils and sacred chrism are stored — is being created. It will be designed to complement the altar and other furnishings, and be placed near the Baptismal Font.

Meanwhile, the work of the *Inspired by the Spirit* campaign to help in paying the final bills of the project also continues. Watch for more encouragement regarding the campaign later this month. **TL**

**Partners in Planning LLC**

In alliance with  
**EQUITABLE ADVISORS**

"A goal without a plan is just a wish." -Antoine de Saint-Exupéry



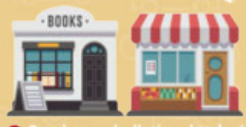
**John Knoll**  
FINANCIAL PLANNER CFP®, ChFC, RICP  
(715) 845-3196  
2100 Stewart Avenue, Suite 150  
Wausau, WI 54401  
Securities offered through Equitable Advisors, LLC (NY, NY 212-314-4600) member FINRA, SIPC. Partners in Planning, LLC is not owned or operated by Equitable Advisors PPG-161625 (8/21)

Parish Member

[www.partnersinplanning.financial](http://www.partnersinplanning.financial)

**MODERN BUILDERS & SUPPLIERS, INC.**  
*Designers & Suppliers of Fine Homes*  
Bus. Phones: 848-3263 or 845-4258  
Fax 842-3623  
3704 W. Stewart Ave., Wausau, WI 54401-3997

GROW YOUR BUSINESS WHILE SUPPORTING YOUR LOCAL PARISH.



Purchase a bulletin ad today!

**BADGERLAND OVERHEAD DOOR LLC**

Wausau, WI  
Complete overhead door and door opener sales, service & installation

715-581-6358 or 715-551-2673

**Malbrit Mechanical, Inc.**  
715-845-4848  
Heating & Air Conditioning Installation • Service • Repair  
[www.malbrit.com](http://www.malbrit.com) Since 1946

**IMAGE MAKERS**  
Professional Styling For Entire Family  
SHARON OSTROWSKI  
Owner  
842-3915  
601 S. 3rd, Wausau, WI 54401

**FREE AD DESIGN**

WITH PURCHASE OF THIS SPACE

**CALL 800.950.9952**

**BRAINARD FUNERAL HOME**  
AND CREMATION CENTER  
(715) 845-5525  
Wausau East • Weston  
[brainardfuneral.com](http://brainardfuneral.com)

*Prima Fascia Massage Therapy LLC*

Rachael Spangler LMT  
Myofascial Release Technique Trigger Point Deep Tissue  
715.870.1251  
<https://www.facebook.com/primafascia/>



**Ashley Luczaj**  
Catholic Financial Life Advisor  
(715) 432-7156

**Catholic Financial Life**

Financial Products Offered:  
Life Insurance  
Annuities  
IRAs  
Medicare Advantage,  
Supplements and Part D Insurance\*

Services Offered:  
Family Protection  
401(k) Rollover

15-0049-10/21 Headquartered in Milwaukee, Wis. Products and services are not available in all states. \*Products offered through Catholic Financial Life's Brokerage affiliate, Catholic Brokerage Services Corporation.



**PC PORTAL**  
EXPERIENCED. TRUSTED. SOLUTIONS.  
Your Trusted IT Partner Since 2004  
715.302.0152 | pcpportal.us



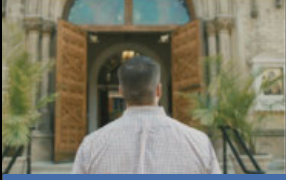
**Peterson/Kraemer**  
Funeral Homes & Crematory Inc.  
Wausau East/Wausau West  
(715) 845-6900



**OSUN**  
PRINT | MAIL | CREATIVE  
1800 GRAND AVE • WAUSAU  
SUNPRINTING.COM  
715-845-4911



**Helke**  
Funeral Home  
and Cremation Services  
Dean Welker, Parish Member  
842-3993 • helke.com  
320 Spruce St., Wausau



**As one door closes,  
God opens another.**

**Menzner  
Hardwoods**  
Accepting Employment Applications!  
Please apply at  
105 Main St., Marathon, WI  
715-443-2354



**Cloverbelt  
Credit Union**  
Great Rates You Can Bank On®  
Wausau & Weston  
715-842-5693  
Parish Members

**FREE  
AD DESIGN**  
WITH PURCHASE  
OF THIS SPACE



**relevant  
92.9 FM radio**  
Talk Radio for Catholic Life!  
Or Listen on-line at  
RelevantRadio.com

**If you're looking for a new career,  
this may be the opportunity  
you've been looking for.**

Tim J. Nowak, FICF  
General Agent  
(920) 810-6188  
timothy.nowak@kofc.org



Learn more about becoming a  
Knight of Columbus  
field agent: kofc.org/careers



SEE DISABILITY INCOME LONG-TERM CARE RETIREMENT LIFE DISABILITY INCOME LONG-TERM CARE RETIREMENT



**715-359-9639**  
Schofield, WI  
www.facebook.com/  
ChristianFaithLifeResources  
www.christianfaithlife.com



**BENEDICTINE LIVING COMMUNITY  
OF WAUSAU**  
Benedictine Health System  
SHORT-TERM REHAB  
AND LONG-TERM CARE  
1821 N. Fourth Avenue, Wausau, WI  
715-675-9451  
www.blcwausau.org



**CALL  
800.950.9952**



**IF THE  
OPEN TABLES SIGN IS  
LIT,  
COME ON IN  
AND SIT**

715.359.2200 | thepalmswausau.com  
5912 Business Hwy 51 S. • Weston

**SUPPORT OUR  
ADVERTISERS!**



**Carmelo's  
Italian Restaurant**  
(715) 845-5570  
3607 N Mountain Rd  
Wausau  
Open 5pm Daily  
www.carmeloswausau.com



**REACH**  
Work-from-anywhere  
solutions for your home  
or mobile office.  
715.298.4414  
ReachConnects.com

**LIFE GOES BY  
in a flash  
LIVE BRILLIANTLY!**



**JIM KRYSHAK JEWELERS**  
Diamonds Fine Jewelry  
715.241.7557 • 226500 Rib Mountain Dr. • Wausau, WI

**GROW YOUR  
BUSINESS  
BY PLACING  
AN AD HERE!**

**CONTACT US!**

Contact Tim Browne  
to place an ad today!  
tbrowne@4LPi.com  
or (800) 950-9952 x2518




**LET US HELP PROTECT YOUR DREAMS.**

**Jamie Schlei Agency, LLC**  
3806 Schofield Ave Ste 3  
Schofield, WI 54476  
jschlei@amfam.com  
(715) 359-2400



American Family Mutual Insurance Company, S.S. and its Operating Companies, American Family Insurance Company, American Family Life Insurance Company, 6000 American Parkway, Madison, WI 53702 010000 - New 2/17 020015 - 9501919  
24-HOUR CLAIMS REPORTING & CUSTOMER SERVICE 1-800-MYAMFAM (888-6326)  
HOME | AUTO | LIFE | BUSINESS | FARM & RANCH AMFAM.COM



**HOUGUM  
LAW FIRM, LLC**  
ESTATE PLANNING & ELDER LAW

**Asset Protection  
Trusts • Wills • Probate  
Nursing Home/Medicaid**

305 S. 18th Avenue  
Ste. 200  
Wausau, WI 54401  
**715.843.5001**  
hougumlaw.com



**THE DIRKS GROUP**  
Beyond the Network  
dirksgroup.com • 715-848-9865

*"Don't replace it... Raise it!"*



**ABLE**  
Concrete Raising 100 LLC  
Industry Leader in Raising & Leveling Concrete  
• 25 Years Experience •  
Call for estimate: (715) 359-1900



**715-845-3171**  
3650 Stewart Ave.  
Wausau, WI 54401

**NEW PATIENTS WELCOME**  
Steven B. DeMille, D.D.S.  
Denise L. Long, D.M.D.  
Adam Manteuffel, D.D.S.  
www.wausaufamilydental.com



4007 Central Drive  
Wausau, WI 54401  
715-845-5111  
aqcllc@frontier.com

- Commercial HVAC
- HVAC Facilities Maintenance
- Commercial Kitchen Ventilation
- Industrial Ventilation
- Dust Collection Systems
- Architectural Metal Fabrication
- Light Structural Steel Fabrication
- Sheet Metal Fabrication

**Place Your Ad Here and  
Support our Parish!**

Instantly create and  
purchase an ad with

**AD CREATOR STUDIO**




**4lpi.com/adcreator**



611 Stevens Dr.  
Wausau, WI  
715.848.2020

Dr. Gregory Leischer  
Dr. Kelsey Koerner  
Dr. Lauren Leurquin  
eyecarecenterwausau.com




**John Neumueller Ins Agency Inc**  
John Neumueller  
CLU, ChFC, CASL, LUTCF, CPCU, Agent  
Offices in Wausau & Marshfield  
www.insurancewausauwi.com  
Bus: 715-675-3324

State Farm, Bloomington, IL 2001739