

# St. Anne Parish

ORDINARY TIME | 2 3 4 5 6 7  
22 January 2023

**IF JESUS IS CALLING** us to follow him, as we believe he is, what is he asking of us? The specifics might vary, but we generally speak of our response as “stewardship.” Having heard the call of Jesus, our desire is to be good “stewards.”

It’s a strange, churchy word to be sure. In the gospel we encounter the “unjust” steward, this guy who manipulates his master’s financial records and, remarkably, is praised for his conniving. Or, as some suggest, it’s a matter of the steward being creative, responding to the situation; cleverly, if not selfishly, giving his best effort.

Those would be worthy attributes of someone responding to the call of Jesus, someone committed to the cause of discipleship – creative, responsive, generous.

Moving into a new year, our parish gives thanks for its creative, responsive and generous stewards - servants of all sorts - and we urge others to consider their own creative and generous response in sharing Time, Talent and Treasure.

One of the most significant aspects of sharing *time* is our presence and participation at Mass. It’s why we count how many people are at Mass and report it in the bulletin; how many people are giving their time to the Lord and to the community. The numbers donating time and presence is far lower than prior to the pandemic; numbers are ticking up slightly, but nowhere near former levels.

Even at Christmas, the standing-room-only crowds we’ve known and had anticipated didn’t materialize. Most pastors offer similar reports. One pastor

See **CALLING** on Page 5

**FISH FRY SIGN-UP STARTS WEDNESDAY**

- watch this week's Quick Things email for details -

**ST. ANNE FISH FRIES RETURN FEB. 24**



**A GREAT SUMMER SERVICE OPPORTUNITY FOR YOUTH AND ADULT CHAPERONES!**

## Summer Youth Mission Trip

July 8-15, 2023

Mission, South Dakota

Register and More Info at:

[www.stanneswausau.org/missiontrips](http://www.stanneswausau.org/missiontrips)



### “You Walk along Our Shoreline”

Sylvia G. Dunstan



1. You walk a - long our shore-line, Where land meets un - known sea.  
2. You call us, Christ, to gath - er The peo - ple of the earth.  
3. We cast our net, O Je - sus; We cry the king - dom's name;



We hear your voice of pow - er, “Now come and fol - low me.  
We can - not fish for on - ly Those lives we think have worth.  
We work for love and jus - tice; We learn to hope through pain.



And if you still will fol - low Through storm and wave and shoal,  
We spread your net of gos - pel A - cross the wa - ter's face,  
You call us, Lord, to gath - er God's daugh - ters and God's sons,



Then I will make you fish - ers, But of the hu - man soul.”  
Our boat a com - mon shel - ter For all found by your grace.  
To let your judg - ment heal us So that all may be one.



715.849.3930 | [stanneswausau.org](http://stanneswausau.org)  
700 W. Bridge St., Wausau WI 54401  
Parish Office Hours: 9A-4P Mon-Thurs

**Fr. Tom Lindner, Pastor**

[frtom@stanneswausau.org](mailto:frtom@stanneswausau.org) | Ext. 309

**Deacon Erv Burkhardt**

[ervb@stanneswausau.org](mailto:ervb@stanneswausau.org) | Ext. 303

**Kristine Lato, Liturgy Coordinator  
& Administrative Assistant**

[kristinek@stanneswausau.org](mailto:kristinek@stanneswausau.org) | Ext. 307

**John Schmitt, Lee Ann Lella**

**Disciple Formation Co-Directors**

[johns@stanneswausau.org](mailto:johns@stanneswausau.org) | Ext. 306

[leeannl@stanneswausau.org](mailto:leeannl@stanneswausau.org) | Ext. 308

**Paul Hoffer, Finance Director**

[paulh@stanneswausau.org](mailto:paulh@stanneswausau.org) | Ext. 310

**Newman Catholic Schools**

**Jeff Gulan, President**

[www.NewmanCatholicSchools.com](http://www.NewmanCatholicSchools.com)

715.845.5735

**JOINING OUR PARISH:** Fr. Tom is eager to talk with you about parish membership. Contact him at [frtom@stanneswausau.org](mailto:frtom@stanneswausau.org) or 849.3930.

**CELEBRATING BAPTISM:** We gladly welcome children to faith through the waters of Baptism. To learn more about celebrating your child's baptism, send an email or call Fr. Tom. Parents celebrating the baptism of their first child are asked to complete a baptism orientation seminar.

**CELEBRATING MARRIAGE:** We eagerly welcome couples seeking to celebrate the Sacrament of Marriage. Contact Fr. Tom to talk about scheduling your wedding and to learn about marriage preparation.

**CARING FOR THE SICK:** If you or a loved one are seriously ill or anticipating surgery, please call or email Fr. Tom to schedule the celebration of the sacrament of Anointing of the Sick.

**RECONCILIATION:** This sacrament of God's healing mercy is celebrated at 9 a.m. Saturday, and by appointment with Fr. Tom.

**COMMUNICATION:** Email is a primary means of communication in the parish. If you are not getting our weekly parish emails, please send an email to [mail@stanneswausau.org](mailto:mail@stanneswausau.org) and we'll add you to the email list.

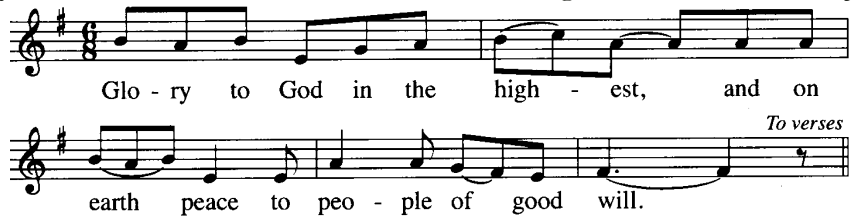
**BECOMING CATHOLIC:** If you are interested in becoming a Christian, becoming a Catholic or curious about matters of faith, contact Lee Ann Lella at [leeannl@stanneswausau.org](mailto:leeannl@stanneswausau.org).

**FACEBOOK:** Like us at *St. Anne Parish* and find photos and news of the parish.

**IT'S EASY TO CONTRIBUTE TO ST. ANNE PARISH. GO TO [STANNESWAUSAU.ORG/SUPPORTING-ST-ANNE](http://STANNESWAUSAU.ORG/SUPPORTING-ST-ANNE).**

## Glory to God

Mass of the Angels and Saints, Steven Janco



1. We praise you, we bless you, we adore you, we glorify you, we give you thanks for your great glory, Lord God, heavenly King, O God, almighty Father.
2. Lord Jesus Christ, Only Begotten Son, Lord God, Lamb of God, Son of the Father, you take away the sins of the world, have mercy on us; you take away the sins of the world, receive our prayer; you are seated at the right hand of the Father, have mercy on us.
3. For you alone are the Holy One, you alone are the Lord, you alone are the Most High, Jesus Christ, with the Holy Spirit, in the glory of God the Father.

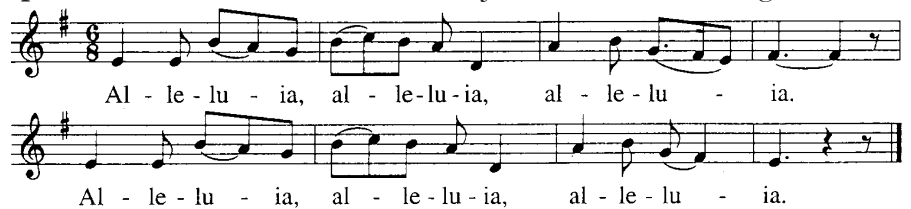
## Psalm 27: "The Lord Is My Light"

Christopher Walker



## Gospel Acclamation

Steven Janco, Mass of the Angels and Saints



## Profession of Faith (Nicene Creed)

I believe in one God, the Father almighty, maker of heaven and earth, of all things visible and invisible.

I believe in one Lord Jesus Christ, the Only Begotten Son of God, born of the Father before all ages.

God from God, Light from Light, true God from true God, begotten, not made, consubstantial with the Father; through him all things were made.

For us men and for our salvation he came down from heaven, *and by the Holy Spirit was incarnate of the Virgin Mary, and became man.*

For our sake he was crucified under Pontius Pilate, he suffered death and was buried, and rose again on the third day in accordance with the Scriptures.

He ascended into heaven and is seated at the right hand of the Father. He will come again in glory to judge the living and the dead and his kingdom will have no end.

I believe in the Holy Spirit, the Lord, the giver of life, who proceeds from the Father and the Son, who with the Father and the Son is adored and glorified, who has spoken through the prophets.

I believe in one, holy, catholic and apostolic Church. I confess one Baptism for the forgiveness of sins and I look forward to the resurrection of the dead and the life of the world to come. Amen.

**KNEELING & STANDING:** People at pews without kneelers, if able, are asked to remain standing for the Eucharistic Prayer. At communion time, we remain standing, as a sign of unity, until everyone has received communion.

**“Drawn to You**

Sarah Hart

Drawn to you, Lord, we are drawn to you, to the  
 beau-ty of your pres-ence in this place. Here for you, God, we are  
 here for you as the gifts we bring be-come a feast of  
 grace. We are drawn to you.

**Eucharistic Prayer**

Mass of the Angels and Saints, Steven Janco

Holy, Holy

Ho - ly, Ho - ly, Ho - ly Lord God of  
 hosts. Heav'n and earth are full of your glo - ry. Ho -  
 san - na, ho - san - na, ho - san - na in the  
 high - est, ho - san - na, ho - san - na, ho -  
 san - na in the high - est. Bless - ed is he who comes in the  
 name of the Lord. Ho - san - na, ho -  
 san - na, ho - san - na in the high - est, ho -  
 san - na, ho - san - na, ho - san - na in the high - est.

**Mystery of Faith**

We pro - claim your Death, O Lord, and pro -  
 fess your Res - ur - rec - tion un - til you come a - gain.

Amen

A - men, A - men, A - men.  
 A - men, A - men, A - men.

**THE CALLING OF PETER**, Andrew, James and John is described so simply. However, following Jesus had to have been a difficult journey for these first disciples. It is difficult for us today. Jesus wants to teach us his way of thinking, acting and encountering the world. But it is not easy for us to embrace his teaching. Good stewards of Jesus' teachings realize they are on a spiritual journey, and must learn from their experiences of being open and resistant to the gospel. They realize the need to be liberated from those actions that keep them from enjoying a closer friendship with Jesus. What is it in our lives that we need to reform? What keeps us from revealing God's glory to others?

—International Catholic Stewardship Council



**Watch for an important announcement coming soon. In the meantime, you can still make your pledge. All contributions and pledges - of any amount - are appreciated. There are pledge forms in the entranceways and you also can pledge at [stanneswausau.org](http://stanneswausau.org).**

**PARTICIPATION AT MASS**

Jan. 14/15  
 4 PM - 157; 8:30 AM - 182  
 10:30 AM - 163; 6 PM - 162; Online - 104

**PARISH GIVING**

Total collected	Jan. 15: \$15,105
	Weekly need: \$15,773
Total collected (since July 1, 2022):	\$426,480
Amount needed:	\$453,227
Shortfall:	\$ 26,747
World Mission Sunday	\$935

**THIS BULLETIN IS MADE POSSIBLE** by businesses and services that have chosen to advertise in our weekly publication.

Gary Stang from LPi, our bulletin publisher, will be in our office soon securing new advertisements. Are you associated with a business that might take advantage of this opportunity to promote your business and our parish? It's an opportunity to expand your reach with print and digital ads. To learn more contact Paul Hoffer at [paulh@stanneswausau.org](mailto:paulh@stanneswausau.org). As always, **please support our bulletin advertisers!**



# This Week

**MONDAY 23 JAN** / Heb 9:15,24-28/Mk 3:22-30

**TUESDAY 24 JAN** / Heb 10:1-10/Mk 3:31-35

- 7 AM - Mass +Peter & Ada Calmes
- 6:30 PM - Sunday Scripture Study, Gathering Space

**WEDNESDAY 25 JAN** / Acts 22:3-16/Mk 16:15-18

- 8:15 AM - Mass +Dave & Ruth Stencil
- 6:30 PM - Forming Young Disciples

**THURSDAY 26 JAN** / 2 Tim 1:1-8/Mk 4:21-25

- 7 AM - Mass +Carol Brady

**FRIDAY 27 JAN** / Heb 10:32-39/Mk 4:26-34

- 7 AM - Mass +Paul & Ted Reynolds

**SATURDAY 28 JAN** / Heb 11:1-2,8-19/Mk 4:35-41

- 9 AM Reconciliation

## FOURTH SUNDAY IN ORDINARY TIME 28/29 JAN

Zeph 2:3, 3:12-13/1 Cor 1:26-31/Mt 5:1-12a

- 4 PM Saturday +Arthur Guralski
- 8:30 AM Sunday +Beatrice Koy **-LIVESTREAM**
- 10:30 AM Sunday +Dorothy & Joseph Karlen
- 6 PM Sunday -People of St. Anne Parish

Links to the daily readings listed above, as well as video and written reflections, can be found at [stanneswausau.org](http://stanneswausau.org). Also at the web site is a daily feature "Saint of the Day."



**GRIEF MINISTRY:** A new session of Grief Share, a program for people experiencing the reality of grief, will begin at 1 p.m. Wednesday, Feb. 15. It will be offered online.

MARY MOTHER OF GOOD HELP PARISH

## SUPER ROLL SUNDAY

Sunday, February 12, 2023  
8:00 AM to 3:00 PM  
Pick Up at St. Anne's Parish



Mary, Mother of Good Help Parish resumes its popular Super Roll Sunday egg roll and spring roll sale on Feb. 12, Super Bowl Sunday. Order online at [marymotherofgoodhelp.org](http://marymotherofgoodhelp.org) or find order forms in the St. Anne Gathering Space.

## "From the Many, Make Us One"

Gabe Huck, Tony Alonso

*Cantor* *Assembly*

To this ta-ble now we

*Cantor* *Assembly*

come. From the man-y, make us

*Cantor* *Assembly*

one. To this ta-ble now we

*Cantor* *Assembly*

come. From the man-y, make us

one. When we sing and when we cry, as we

live and as we die: To this ta-ble now we

come. From the man-y, make us one.

## "Bearers of Peace"

Bernadette Farrell

1. Peo - ple of Je - sus, trust - ed to be bear - ers of  
2. Stand with the ones who see a new way: peo - ple of  
3. Pray for the day our chil - dren will see war strange and  
4. Why spend your tears on what can - not heal? Why spend your  
5. Chil - dren of peace, go forth through the earth, heal - ing our

1. peace from God's liv - ing tree, peace that the world it - self can-not  
2. faith who strug - gle and pray, giv - en the call to shape and re -  
3. dis - tant as slav - er - y. Work for a world where new ways a -  
4. rage on what you con-veal? God's liv - ing Word cries out to re -  
5. world and bring - ing to birth vi - sion to build and fash - ion a

1. know, the peace that is giv - en to plant and to grow.  
2. build our ac - tions, our con-scienc-es, our bro - ken world.  
3. bound to meet and to di - a - logue till peace is found.  
4. veal a love that will sat - is - fy, hope that is real.  
5. way: the full - ness of life for God's peo - ple to - day.

**CALLING** / from Page 1

expressed his dismay at seeing pictures of parish families on Facebook celebrating Christmas, but not seeing them at Mass. It's hard to accept that such may be our new reality, and we struggle with how best to encourage people to resume giving their time to God.

*Talent* – sharing our abilities, our effort with the parish – remains a challenge as well. We struggle week to week to have sufficient ministers at our four Masses, oftentimes calling upon the same generous people to assist in various roles. This scarcity of ministers also affects how we worship; we currently are unable to offer the Blood of Christ at Mass because there aren't sufficient people to offer the cup at all of our liturgies every Lord's Day. We'll be calling for new and more ministers in coming weeks, not to mention people to welcome new refugee families and assist with our Lenten fish fries.

It's also helpful to think outside of former patterns – how we've *always* done it. Filling in at Resurrection and St. Michael parishes I was assisted at a few Masses by an adult server. This was common in my former parish experiences, as well. We've moved in this direction a bit with parents serving with children, which seems a great way for mothers and fathers to encourage their children and minister with them. This doesn't preclude young people serving, but it opens doors to other possibilities.

In terms of *treasure*, some might suggest we've talked a bit too much of late about financial support. Working to meet our target in the *Inspired By the Spirit* campaign, there really wasn't an option – We needed to get the word out! And results seem to suggest that frequent, brief mentions have had a positive result. Of course the five-year capital campaign is in addition to our regular parish giving, which remains necessary to support the ongoing needs of our parish. As is true with time and talent, we are not all able to contribute the same amount, but hopefully we might all contribute something. **TL**

**NEW NEIGHBORS DISCUSSION:** The challenges and successes of welcoming new neighbors, documented and undocmented, will be the focus of a panel discussion at 7 p.m. Wednesday, Jan. 25 at UW Center for Civic Engagement, 625 Stewart Ave. The panel will include refugee resettlement officials, a new neighbor from Burundi and a case manager who works with arrivals from Central and South America.



**NIGHTS OF MUSIC, MISSION & LIGHT:**

If you weren't able to attend our Advent evenings with ValLimar Jansen, you can find all of the presentations at links in the weekly Quick Things email, as well as at [stannesausau.org/advent-music-and-mission](http://stannesausau.org/advent-music-and-mission). The online presentations will be available only for the rest of the month.

**Partners in Planning LLC** | In alliance with **EQUITABLE ADVISORS**

*"A goal without a plan is just a wish." -Antoine de Saint-Exupéry*



**John Knoll**  
FINANCIAL PLANNER CFP®, ChFC, RICP  
**(715) 845-3196**  
2100 Stewart Avenue, Suite 150  
Wausau, WI 54401  
Securities offered through Equitable Advisors, LLC (NY, NY 212-314-4600) member FINRA, SIPC. Partners in Planning, LLC is not owned or operated by Equitable Advisors PPG-161625 (8/21)

Parish Member

[www.partnersinplanning.financial](http://www.partnersinplanning.financial)

**NEVER MISS OUR BULLETIN!**

**SUBSCRIBE**

Have our bulletin emailed to you every week.

Visit [www.parishesonline.com](http://www.parishesonline.com)

**BADGERLAND OVERHEAD DOOR LLC**

Wausau, WI  
Complete overhead door and door opener sales, service & installation

**715-581-6358 or 715-551-2673**

**MODERN BUILDERS & SUPPLIERS, INC.**  
*Designers & Suppliers of Fine Homes*  
Bus. Phones: 848-3263 or 845-4258  
Fax 842-3623  
3704 W. Stewart Ave., Wausau, WI 54401-3997

**Malbrit Mechanical, Inc.**  
**715-845-4848**  
Heating & Air Conditioning Installation • Service • Repair  
[www.malbrit.com](http://www.malbrit.com) Since 1946

**IMAGE MAKERS**  
*Professional Styling For Entire Family*  
SHARON OSTROWSKI  
Owner  
**842-3915**  
601 S. 3rd, Wausau, WI 54401

**FREE AD DESIGN**  
with purchase of this space  
**CALL 800-950-9952**

**BRAINARD FUNERAL HOME**  
AND CREMATION CENTER  
**(715) 845-5525**  
Wausau East • Weston  
[brainardfuneral.com](http://brainardfuneral.com)

**WE'RE HIRING!**  
AD SALES EXECUTIVES  
BE YOURSELF. BRING YOUR PASSION. WORK WITH PURPOSE.  
• Paid training • Some travel  
• Work-life balance • Full-Time with benefits  
• Serve your community

Contact us at [careers@4lpi.com](mailto:careers@4lpi.com) or [www.4lpi.com/careers](http://www.4lpi.com/careers)



**Ashley Luczaj**  
Catholic Financial Life Advisor  
(715) 432-7156

15-0049-10/21 Headquartered in Milwaukee, Wis. Products and services are not available in all states. \*Products offered through Catholic Financial Life's Brokerage affiliate, Catholic Brokerage Services Corporation.

**Financial Products Offered:**  
Life Insurance  
Annuities  
IRAs  
Medicare Advantage, Supplements and Part D Insurance\*

**Services Offered:**  
Family Protection  
401(k) Rollover





**PC PORTAL**  
EXPERIENCED. TRUSTED. SOLUTIONS.  
Your Trusted IT Partner Since 2004  
715.302.0152 | pcportal.us



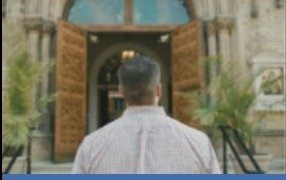
**Peterson/Kraemer**  
Funeral Homes & Crematory Inc.  
Wausau East/Wausau West  
(715) 845-6900



**OSUN**  
PRINT | MAIL | CREATIVE  
1800 GRAND AVE • WAUSAU  
SUNPRINTING.COM  
715-845-4911



**Helke**  
Funeral Home  
and Cremation Services  
Dean Welker, Parish Member  
842-3993 • helke.com  
320 Spruce St., Wausau




**As one door closes,  
God opens another.**



**MENZNER HARDWOODS**  
Leading Manufacturer of Hardwood Mouldings  
and Veneered Products  
715-443-2354 • 105 Main St. Marathon WI • menznerhardwoods.com



**Cloverbelt Credit Union**  
Great Rates You Can Bank On®  
Wausau & Weston  
715-842-5693  
Parish Members



**FREE AD DESIGN**  
with purchase of this space  
**CALL 800-950-9952**



**relevant radio**  
92.9 FM  
Talk Radio for Catholic Life!  
Or Listen on-line at  
**RelevantRadio.com**


**If you're looking for a new career,  
this may be the opportunity  
you've been looking for.**

Tim J. Nowak, FICF  
General Agent  
(920) 810-6188  
timothy.nowak@kofc.org



Learn more about becoming a Knight of Columbus  
field agent: kofc.org/careers  **Knights of Columbus**

**Carmelo's**  
Italian Restaurant  
(715) 845-5570  
3607 N Mountain Rd  
Wausau  
**Open 5pm Daily**  
www.carmelosausau.com 



**Benedictine**  
LIVING COMMUNITY | WAUSAU  
SHORT-TERM REHAB  
AND LONG-TERM CARE



**IF THE OPEN TABLES SIGN IS LIT,  
COME ON IN AND SIT**

715.359.2200 | thepalmsausau.com  
5912 Business Hwy 51 S. • Weston

**SUPPORT OUR ADVERTISERS!**

**WE APPRECIATE OUR ADVERTISERS!**

1821 N. Fourth Avenue,  
Wausau, WI 54401  
**715-675-9451**  
www.blcwausau.org




www.athensvetservice.com  
Visit our Website & Online Store  
**My VetStore**  
Online  
(715)257-7003



**REACH**  
Work-from-anywhere  
solutions for your home  
or mobile office.  
715.298.4414  
ReachConnects.com

LIFE GOES BY  
*in a flash*  
LIVE BRILLIANTLY!





**JIM KRYSHAK JEWELERS**  
Diamonds Fine Jewelry  
715.241.7557 • 226500 Rib Mountain Dr. • Wausau, WI

**LET'S GROW YOUR BUSINESS**  
Place Your Ad Here  
and Support Our Parish!

**CONTACT ME**  
**Gary Stang**  
gstang@4LPi.com  
(800) 950-9952 x5838

**LET US HELP PROTECT YOUR DREAMS.**

**Jamie Schlei Agency, LLC**  
3806 Schofield Ave Ste 3  
Schofield, WI 54476  
jschlei@amfam.com  
(715) 359-2400

**AMERICAN FAMILY INSURANCE**  
24-HOUR CLAIMS REPORTING & CUSTOMER SERVICE | 800-MYAMFAM (888-6326)  
HOME | AUTO | LIFE | BUSINESS | FARM & RANCH AMFAM.COM  



**HOUGUM LAW FIRM, LLC**  
ESTATE PLANNING & ELDER LAW

**Asset Protection**  
Trusts • Wills • Probate  
Nursing Home/Medicaid

Serving all of Wisconsin  
with offices in  
Wausau & Rhinelander  
**715.843.5001**  
hougumlaw.com



**THE DIRKS GROUP**  
Beyond the Network  
dirksgroup.com • 715-848-9865



**TALL PINES**  
Counseling and Evaluations  
for Professionals and Families  
(715) 301-0267 www.tallpinesbh.com



**715-845-3171**  
3650 Stewart Ave.  
Wausau, WI 54401

**NEW PATIENTS WELCOME**  
Steven B. DeMille, D.D.S.  
Denise L. Long, D.M.D.  
Adam Manteuffel, D.D.S.  
www.wausaufamilydental.com



4007 Central Drive  
Wausau, WI 54401  
715-845-5111  
aqcllc@frontier.com

- Commercial HVAC
- HVAC Facilities Maintenance
- Commercial Kitchen Ventilation
- Industrial Ventilation
- Dust Collection Systems
- Architectural Metal Fabrication
- Light Structural Steel Fabrication
- Sheet Metal Fabrication

**Place Your Ad Here and Support our Parish!**

Instantly create and purchase an ad with

**AD CREATOR STUDIO**



**4lpi.com/adcreator**



611 Stevens Dr.  
Wausau, WI  
715.848.2020

Dr. Gregory Leischer  
Dr. Kelsey Koerner  
Dr. Lauren Leurquin  
eyecarecenterausau.com




**John Neumueller Ins Agency Inc**  
John Neumueller  
CLU, ChFC, CASL, LUTCF, CPCU, Agent  
Offices in Wausau & Marshfield  
www.insuranceausauwi.com  
Bus: 715-675-3324

State Farm, Bloomington, IL  
2001739