



# St. Anne Parish

## Easter 1 2 3 4 5 6 7 8

### 30 April 2023

#### MY FRIEND JULI IS A JOURNALIST

and an essential trait of a good journalist is to ask good questions. Being a friend of a good journalist means that sometimes the questions are asked of me.

I think it was on Good Friday that Juli shared a post from her parish's Facebook page. Some parishioners had returned from the Holy Land and shared highlights of their visit to the Church of the Holy Sepulchre in Jerusalem where tradition tells us Jesus was buried and, thus, where he rose from the dead. They described waiting for over an hour in a



line reminiscent of an amusement park, "but with hushed volume." Many seemed to be just milling about, others more focused in their prayer and contemplation.

Many people who visit the Holy Land, like these parishioners, identify this holy site as one of the most profound, emotional and memorable. That's understandable; it is the place of the resurrection, after all; none of the rest would matter, if not for that. To be honest, however, that was not true of my experience when I visited in 2001. The Church of the Holy Sepulchre seemed chaotic. I also thought it was odd that it wasn't called the Church of the Resurrection, or at least the Church of the Empty Tomb?

See **TOMB** on Page 5

#### "Christ the Lord Is Risen Today"

Charles Wesley



- 1. Christ, the Lord, is ris'n to - day,
  - 2. Lives a - gain our glo - rious King;
  - 3. Love's re - deem - ing work is done,
  - 4. Soar we now where Christ has led,
- } Al - le - lu - ia!



- 1. All on earth with an - gels say.
  - 2. Where, O death, is now thy sting?
  - 3. Fought the fight, the bat - tle won.
  - 4. Fol - l'wing our ex - alt - ed head;
- } Al - le - lu - ia!



- 1. Raise your joys and tri - umphs high,
  - 2. Once he died our souls to save,
  - 3. Death in vain for - bids him rise;
  - 4. Made like him, like him we rise,
- } Al - le - lu - ia!



- 1. Sing ye heav'ns and earth re - ply,
  - 2. Where thy vic - to - ry, O grave?
  - 3. Christ has o - pen'd par - a - dise.
  - 4. Ours the cross, the grave, the skies.
- } Al - le - lu - ia!

#### Glory to God

Mass of St. Ann, Ed Bolduc



Glo-ry!      Glo-ry to God in the high-est.      Glo-ry!



Glo-ry to God in the high-est, and on earth peace to peo-ple of good

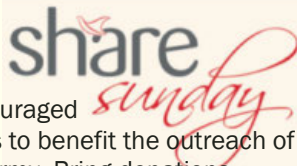


will.      We praise you, we bless you, we a-dore you, we glo-ri-fy



you,      we give you thanks for your great glo - ry, →

**ON THE FIRST TWO SUNDAYS OF MAY**



parish-ioners are encouraged to donate items to benefit the outreach of The Salvation Army. Bring donations along to Mass or drop them in the Gathering Space during the week. Learn more about this month's beneficiary at [centralusa.salvationarmy.org/wausau](http://centralusa.salvationarmy.org/wausau). These items are needed now:

- Peanut Butter, Jelly
- Sloppy Joe Mix
- Canned Stews
- Canned Chicken
- Applesauce
- Canned Carrots
- Tomato Paste
- Ketchup, Mustard
- Baby Products: Formula, Food, Snacks, Diapers, Wipes, etc.)
- Toothpaste
- Toothbrushes
- Paper Towels
- Toilet Paper
- Bedding: Twin Sized Sheets, Blankets, Pillows, Pillowcases
- Shampoo
- Razors, Shaving Cream
- Deodorant
- Soap
- Sanitary Napkins, Tampons
- Laundry Detergent
- Dish Soap
- Cleaning Products

**COMMUNITY MEAL:** St.

Anne is part of a rotation preparing and serving Community Meals on alternating months. May is our month and dinner will be prepared May 4 at St. Matthew School. Parishioners are asked to provide desserts. Send an email to [candbgiebel@gmail.com](mailto:candbgiebel@gmail.com) or [dparlier77@gmail.com](mailto:dparlier77@gmail.com) for details.



**NEW BEGINNINGS FOR REFUGEES**, an organization assisting with the resettlement of refugees in Central Wisconsin, will be showing the movie "The Good Lie" at 7 p.m. Monday, May 1 at the Grand Theater. The movie, starring Reese Witherspoon, tells the story of four Sudanese children and their traumatic ordeal as refugees. Monetary donations will be accepted.



715.849.3930 | [stanneswausau.org](http://stanneswausau.org)  
700 W. Bridge St., Wausau WI 54401  
Parish Office Hours: 9A-4P Mon-Thurs

Fr. Tom Lindner, Pastor

[frtom@stanneswausau.org](mailto:frtom@stanneswausau.org) | Ext. 309

**JOINING OUR PARISH:** Fr. Tom would be glad to talk with you about parish membership. Send him an email at [frtom@stanneswausau.org](mailto:frtom@stanneswausau.org) or call 849.3930.

Lord God, heav-en-ly King, O God, al- might-y  
Fa- ther. Lord Je- sus Christ, On-ly Be- got- ten Son,  
Lord God, Lamb of God, Son of the Fa- ther, you take a-  
way the sins of the world, have mer- cy on us; you take a-  
way the sins of the world, re- ceive our prayer; you are seat- ed at the right  
hand of the Fa- ther, have mer- cy on us. For  
you a- lone are the Ho- ly One, you a- lone are the Lord,  
you a- lone are the Most High, Je- sus Christ, with the Ho- ly  
Spir- it, in the glo- ry of God the Fa- ther. Glo- ry!  
Glo- ry to God in the high- est. Glo- ry! Glo- ry to God in the  
high- est, and on earth peace to peo- ple of good will. A- men.

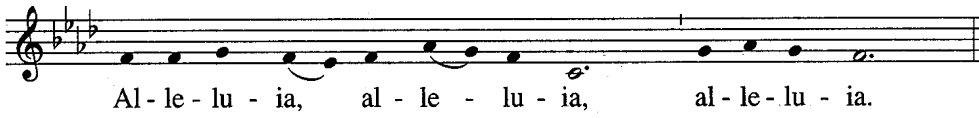
**Psalm 23, "My Shepherd Is the Lord"**

Collegetown Composers Group

My shep- herd is the Lord, there is no- thing I shall need.  
Be- side the rest- ful wa- ters my God re- fresh- es me.  
*All:* ...there is no- thing I shall need.  
*All:* ...my God re- fresh- es me.



## Easter Alleluia



## Profession of Faith (The Apostles' Creed)

I believe in God, the Father almighty, Creator of heaven and earth, and in Jesus Christ, his only Son, our Lord, *who was conceived by the Holy Spirit, born of the Virgin Mary*, suffered under Pontius Pilate, was crucified, died and was buried; he descended into hell; on the third day he rose again from the dead; he ascended into heaven, and is seated at the right hand of God the Father almighty; from there he will come to judge the living and the dead.

I believe in the Holy Spirit, the holy catholic Church, the communion of saints, the forgiveness of sins, the resurrection of the body, and life everlasting. Amen.

## "Shelter Me"

Michael Joncas



## Eucharistic Prayer

Mass of St. Ann, Ed Bolduc

Holy, Holy



**KNEELING & STANDING:** People at pews without kneelers, if able, are asked to remain standing for the Eucharistic Prayer and throughout the communion procession.

## BLEST ART IS AT ST. ANNE

this weekend selling hand-carved nativity sets, statues, crosses, rosaries, and many other pieces made from beautiful olive wood. Proceeds will benefit families in the Holy Land. Blest Art accepts cash, checks and all major credit cards.



**CINNAMON ROLLS** will be on sale after Masses next Sunday morning to benefit the summer youth mission trip.

## Stewardship

### PARTICIPATION AT MASS

April 22/23

4 PM - 285; 8:30 AM - 254  
10:30 AM - 239; 6 PM - 101; Online - 133

### PARISH GIVING

Total collected	April 23: \$17,599
	Weekly need: \$15,773
Total collected (since July 1, 2022):	\$642,742
Amount needed:	\$674,045
Shortfall:	\$ 31,304

**IT'S EASY TO MAKE A CONTRIBUTION:  
GO TO [STANNESWAUSAU.ORG/  
SUPPORTING-ST-ANNE](http://STANNESWAUSAU.ORG/SUPPORTING-ST-ANNE).**

## This Week

**MONDAY 1 MAY** / Acts 11:1-18/Jn 10:11-18

**TUESDAY 2 MAY** / Acts 11:19-26/Jn 10:22-30

- 7 AM - MaSS +Maynard Hollis
- 6:30 PM - Sunday Scripture Study, Gathering Space

**WEDNESDAY 3 MAY** / 1 Cor 15:1-8/Jn 14:6-14

- 8:15 AM - Mass +Diane Bargender

**THURSDAY 4 MAY** / Acts 13:13-25/Jn 13:16-20

- 7 AM - MaSS +Ed, Gert & Dawn Burek
- 6 PM - Community Meal, St. Matthew

**FRIDAY 5 MAY** / Acts 13:26-33/Jn 14:1-6

- 7 AM - MaSS +Poor Souls

**SATURDAY 6 MAY** / Acts 13:44-52/Jn 14:7-14

- 9 AM - Reconciliation

**FIFTH SUNDAY OF EASTER | 6/7 MAY**

Acts 6:1-7/1 Pt 2:4-9/Jn 14:1-12

- 4 PM Saturday +Charles Ress
- 8:30 AM Sunday -People of St. Anne Parish -LIVESTREAM
- 10:30 AM Sunday +Bernice Kozlowski
- 6 PM Sunday +Michael Marx

Mystery of Faith

Save us, Sav - ior of the world, for by your  
Cross and Res - ur - rec - tion you have set us free.

Amen

A - men, a - men, a - men.  
A - men, a - men, a - men.

“I Receive the Living God” Bernard Geoffroy, Dom Clement Jacob OSB

I re-ceive the liv - ing God, and my heart is full of  
joy. I re-ceive the liv - ing God, and my heart is full of joy.

Easter Dismissal

*Deacon or priest:*

Go in the peace of Christ, al - le - lu - ia, al - le - lu - ia.  
*All:* Thanks be to God, al - le - lu - ia, al - le - lu - ia.

The presider says, “Christ is risen!” All respond, **He is risen indeed!**

“Now the Green Blade Rises” John M.C. Crum

1. Now the green blade ris - es from the bur - ied grain,  
2. In the grave they laid him, Love by ha - tred slain,  
3. Forth he came at East - er, like the ris - en grain,  
4. When our hearts are win - try, griev - ing, or in pain,

Wheat that in the dark earth man - y days has lain;  
Think - ing he would nev - er wake to life a - gain,  
Spring - ing from the grave where three days he had lain;  
By your touch you call us back to life a - gain,

Love lives a - gain, that with the dead has been;  
Laid in the earth like grain that sleeps un - seen;  
Raised from the dead, my liv - ing Lord is seen;  
Fields of our hearts that dead and bare have been;

Love is come a - gain, like wheat a - ris - ing green.



**NEW LIFE OF EASTER:** The highlight of the Easter Vigil was the celebration of Baptism — **Christian Hargett, Vivian Utecht** and **Yia Vang** walking into the baptismal font, being washed in the newly blessed Easter waters, coming out as new Christians, and then going on to be confirmed and to gather at the Lord’s table. In addition, **Kurt Utecht** was brought into Full Communion with the Catholic Church. You can see photo and video highlights of the Vigil and other Triduum liturgies at [www.stanneswausau.org/liturgy](http://www.stanneswausau.org/liturgy).

On April 16, **Andrew John Knoll** was claimed for Christ and washed in the waters of Baptism. He is the son of John and Jackie Knoll.



**ETERNAL LIFE:** We pray for the eternal rest of **Wilfrid Guillaume** and **Bob Krause** who died recently. May they rest in the peace of the Risen Lord.

+++

**KNIGHTS OF COLUMBUS MEMBERS** will be at Masses next weekend to answer questions and invite new members to join and serve the community as the Knights have since 1882.

**ST. ANNE’S SUMMER-JAM** returns bigger and better than last year!



Beginning on the evening of Friday, June 16 and then all day and into the night of Saturday, June 17, enjoy live music, food trucks, basket raffles, corn-hole tournament, big-prize raffle & more.

**TAKE RAFFLE TICKETS TODAY** to sell to friends and family. Watch for volunteer opportunities to help make SummerJam happen.



I was much more taken with the site where tradition places Jesus preaching the Sermon on the Mount. Sitting on that hillside along the Sea of Galilee, a much more contemplative setting, you have an awareness of the moment, the people and preaching of that day.

Juli, however, was perplexed by something fundamental to people visiting such destinations, most particularly the site of the Resurrection.

**“Why is there a church over a tomb and why do people wait in line to see an empty tomb?” she asked, adding, with a journalist’s inherent suspicion, “which I wager isn’t likely the actual tomb.”**

She continued, “Why not honor one another and the earth and the sky and water and each other and our enemies and our friends? Why wait in an amusement park line to see the tomb?”

In the midst of Triduum details, such as what I’d be preaching for Easter, I told her I’d respond later. All these weeks later I finally am.

To her claim of historical veracity, anthropologists and scripture scholars

largely agree that this site of pilgrimage and veneration is likely the place where Jesus was buried and rose from the dead. To me that’s of marginal concern. It’s the place that Christians for centuries have recognized as the place. If not the exact location, it is within a pretty confined vicinity.

It’s her overall question, however, that intrigued me. Why, indeed? I went, why did I go? In recent months, members of our parish went. Why did they go? Why spend the money, take the time, incur the risk that comes with traveling in Israel these days? Why do it when Jesus, after he rose from the dead, in various ways, said again and again – don’t stay here, go tell the others, go to Galilee, don’t hang on to me.

**We do it, I think, quite simply, out of a desire, a need to be closer to Jesus; seeking strength in these places where he walked and preached, performed miracles and ate simple meals.** Being at the Church of the Nativity in Bethlehem or the Church of the Annunciation in Naza-

reth or on Mount Tabor, the site of the Transfiguration – we are drawn into the drama of Jesus’ life, but also compelled into a more profound awareness of our mission as disciples. A true pilgrim doesn’t visit these places as one does an amusement park, but rather in awe and humility, open to what the Spirit might reveal to us in these places, in these journeys of grace.

**Can such a profound awareness be realized in one’s backyard or parish church? Of course. Doesn’t Juli have a point in emphasizing our need to love one another over visiting a church built over an empty tomb? She’d argue she does.** I’d argue, as I often do with her, that it can and must be both, and that walking where Jesus walked and being where he rose from the dead can strengthen our awareness and determination to love as he loved, to potentially leave the empty tomb with the enthusiasm of those first disciples, recognizing our shared mission to proclaim the Good News. **TL**

Cover image by Laura James from *Book of the Gospels*, Liturgy Training Publications  
Music reprinted under ONE LICENSE #A-729229.

**Partners in Planning LLC**  
In alliance with **EQUITABLE ADVISORS**

*“A goal without a plan is just a wish.” -Antoine de Saint-Exupéry*



**John Knoll**  
FINANCIAL PLANNER CFP®, ChFC, RICP  
(715) 845-3196  
2100 Stewart Avenue, Suite 150  
Wausau, WI 54401

Securities offered through Equitable Advisors, LLC (NY, NY 212-314-4600) member FINRA, SIPC. Partners in Planning, LLC is not owned or operated by Equitable Advisors PPG-161625 (8/21)

Parish Member

[www.partnersinplanning.financial](http://www.partnersinplanning.financial)

**RANGER CITY** CUSTOM-CUT FRESH BEEF, PORK & CHICKEN  
[merrilldistributing.com](http://merrilldistributing.com)

**Merrill Distributing Inc.**  
SINCE 1912  
OUR MISSION: CUSTOMER SERVICE EXCELLENCE

**Frostman** fish market

\*Partner of St. Anne’s Lenten Fish Fry. Thank you for supporting St. Anne’s Parish.

**BADGERLAND**  
OVERHEAD DOOR LLC

Wausau, WI  
Complete overhead door and door opener sales, service & installation

715-581-6358 or 715-551-2673

**MODERN BUILDERS & SUPPLIERS, INC.**  
Designers & Suppliers of Fine Homes  
Bus. Phones: 848-3263 or 845-4258  
Fax 842-3623  
3704 W. Stewart Ave., Wausau, WI 54401-3997

**Malbrit Mechanical, Inc.**  
715-845-4848  
Heating & Air Conditioning Installation • Service • Repair  
[www.malbrit.com](http://www.malbrit.com) Since 1946

**IMAGE MAKERS**  
Professional Styling For Entire Family  
SHARON OSTROWSKI  
Owner  
842-3915  
601 S. 3rd, Wausau, WI 54401

**Culliver’s**  
WATER TREATMENT & FILTERING SYSTEMS

WAUSAU:  
219 Central Bridge St. • 845-6994  
CEDAR CREEK:  
10202 Park Plaza • 355-0909  
RIB MOUNTAIN:  
225577 Lilac Avenue • 841-0131  
[www.culvers.com](http://www.culvers.com)

**BRAINARD FUNERAL HOME**  
AND CREMATION CENTER  
(715) 845-5525  
Wausau East • Weston  
[brainardfuneral.com](http://brainardfuneral.com)

**Sprinkler Pete**  
Lawn Irrigation Systems  
715-581-5384

**Catholic Financial Life**

Financial Products Offered:  
Life Insurance  
Annuities  
IRAs  
Medicare Advantage,  
Supplements and Part D Insurance\*

Services Offered:  
Family Protection  
401(k) Rollover



**Ashley Luczaj**  
Catholic Financial Life Advisor  
(715) 432-7156

15-0049-10/21 Headquartered in Milwaukee, Wis.  
Products and services are not available in all states.  
\*Products offered through Catholic Financial Life’s Brokerage affiliate, Catholic Brokerage Services Corporation.

**FREE WATER TEST**  
Call your Culligan Man® today to receive a FREE test of your home’s water.  
Dealer participation may vary. See your local dealer for details on this limited time offer. Not valid with other offers.  
© 2022 Culligan International Company.

**Culligan Water OF ROTHSCHILD**  
715-201-3249 | [culliganh2o.com](http://culliganh2o.com)

**IF YOU LIVE ALONE**

**MDMedAlert!**™ As Low As **\$19<sup>95</sup>** /mo.

✓ Ambulance ✓ Police/Fire  
✓ Family/Friends ✓ GPS & Fall Alert

**CALL NOW! 800.808.9294**  
[md-medalert.com](http://md-medalert.com)





**Cornerstone Advisors**  
 Annaprize Private Wealth Advisory Practice



**Named *Forbes* Best-in-State Wealth Advisor**

**Visit Website for Details**


- Financial Planning
- Retirement Planning
- College Planning
- Investments
- Estate Planning

**(715) 849-3697**  
 CornerstoneAdvisors-Wisconsin.com



**Peterson/Kraemer**  
 Funeral Homes & Crematory Inc.

Wausau East/Wausau West  
**(715) 845-6900**



**OSUN**  
 PRINT | MAIL | CREATIVE

1800 GRAND AVE • WAUSAU  
 SUNPRINTING.COM  
 715-845-4911



**Helke**  
 Funeral Home  
 and Cremation Services

**Dean Welker, Parish Member**  
 842-3993 • helke.com  
 320 Spruce St., Wausau



**Join our Team!**

Serve your local Catholic Community, become an agent with the Knights of Columbus!  
 Contact us at [www.kofcwi.org](http://www.kofcwi.org)

Life Insurance • Disability Income Insurance  
 Long Term Insurance • Retirement Annuities

**Tim J. Nowak, FICF**  
 General Agent  
 (920) 810-6188  
 timothy.nowak@kofc.org



Knights of Columbus

**Carmelo's**  
 Italian Restaurant

**(715) 845-5570**  
 3607 N Mountain Rd  
 Wausau

**Open 5pm Daily**

[www.carmelosausau.com](http://www.carmelosausau.com)



**Cloverbelt Credit Union**  
 Great Rates You Can Bank On®

Wausau & Weston  
 715-842-5693  
 Parish Members

Trucking • Bulldozing • Excavation • Demolition  
 Insured and Bonded

**DRAEGER**  
 TRUCKING & EXCAVATING, LLC

Marathon, WI

Snowplowing - Sanding - Salting - Snow Removal  
 Commercial & Residential Site Developers

**Chris Draeger, Owner (715) 443-2416**

IF THE OPEN TABLES SIGN IS LIT, COME ON IN AND SIT



**715.359.2200 | thepalmsausau.com**  
 5912 Business Hwy 51 S. • Weston



**ellis CONSTRUCTION**

**Built Right.™**

715-345-5000 [www.elliswi.com](http://www.elliswi.com)



**Harmony Hills Pet Resort**

Boarding • Daycare • Grooming

**715.675.3141**  
[www.facebook.com/harmony/hillspetresort](http://www.facebook.com/harmony/hillspetresort)



**MENZNER HARDWOODS**  
 Leading Manufacturer of Hardwood Mouldings and Veneered Products

715-443-2354 • 105 Main St. Marathon WI • [menznerhardwoods.com](http://menznerhardwoods.com)

[www.athensvetservice.com](http://www.athensvetservice.com)  
 Visit our Website & Online Store



**(715)257-7003**




**REACH**

Work-from-anywhere solutions for your home or mobile office.

**715.298.4414**  
[ReachConnects.com](http://ReachConnects.com)

LIFE GOES BY in a flash LIVE BRILLIANTLY!



**JIM KRYSHAK JEWELLERS**  
 Diamonds Fine Jewelry

715.241.7557 • 226500 Rib Mountain Dr. • Wausau, WI

**LET'S GROW YOUR BUSINESS**

Place Your Ad Here and Support Our Parish!

**CONTACT ME Gary Stang**

[gstang@4LPi.com](mailto:gstang@4LPi.com)

**(800) 950-9952 x5838**

LET US HELP PROTECT YOUR DREAMS.



**Jamie Schlei Agency, LLC**  
 3806 Schofield Ave Ste 3  
 Schofield, WI 54476  
 jschlei@amfam.com  
 (715) 359-2400

American Family Mutual Insurance Company, S.I. and its Operating Companies  
 American Family Insurance Company, American Family Life Insurance Company, 6500 American Parkway, Madison, WI 53718 01000 - New 1/17 02015 - 9501919

**AMERICAN FAMILY INSURANCE**  
 24-HOUR CLAIMS REPORTING & CUSTOMER SERVICE 1-800-MYAMFAM (662-6226)  
 HOME | AUTO | LIFE | BUSINESS | FARM & RANCH | [AMFAM.COM](http://AMFAM.COM)



**HOUGUM LAW FIRM, LLC**  
 ESTATE PLANNING & ELDER LAW

**Asset Protection**  
 Trusts • Wills • Probate  
 Nursing Home/Medicaid

Serving all of Wisconsin with offices in Wausau & Rhinelander

**715.843.5001**  
[hougumlaw.com](http://hougumlaw.com)



**THE DIRKS GROUP**  
 Beyond the Network

[dirksgroup.com](http://dirksgroup.com) • 715-848-9865

Parishioners



**TALL PINES**

Counseling and Evaluations for Professionals and Families

**(715) 301-0267** [www.tallpinesbh.com](http://www.tallpinesbh.com)



**715-845-3171**  
 3650 Stewart Ave.  
 Wausau, WI 54401

**NEW PATIENTS WELCOME**  
 Steven B. DeMille, D.D.S.  
 Denise L. Long, D.M.D.  
 Adam Manteuffel, D.D.S.  
[www.wausaufamilydental.com](http://www.wausaufamilydental.com)



4007 Central Drive  
 Wausau, WI 54401  
 715-845-5111  
 aqcllc@frontier.com

- Commercial HVAC
- HVAC Facilities Maintenance
- Commercial Kitchen Ventilation
- Industrial Ventilation
- Dust Collection Systems
- Architectural Metal Fabrication
- Light Structural Steel Fabrication
- Sheet Metal Fabrication



**LINDNER PLUMBING LLC**

**715-610-0370**



**Benedictine**  
 LIVING COMMUNITY | WAUSAU

SHORT-TERM REHAB AND LONG-TERM CARE




**John Neumueller Ins Agency Inc**  
 John Neumueller  
 CLU, ChFC, CASL, LUTCF, CPCU, Agent  
 Offices in Wausau & Marshfield  
[www.insuranceausauwi.com](http://www.insuranceausauwi.com)  
 Bus: 715-675-3324

State Farm, Bloomington, IL 2001739



611 Stevens Dr.  
 Wausau, WI  
 715.848.2020

Dr. Gregory Leischer  
 Dr. Kelsey Koerner  
 Dr. Lauren Leurquin

[eyecarecenterausau.com](http://eyecarecenterausau.com)



**WAUSAU MANOR HEALTH SERVICES**

...The Right Choice

Call **715.842.0575**  
[www.wausauhs.com](http://www.wausauhs.com)  
 3107 Westhill Dr. • Wausau, WI

1821 N. Fourth Avenue,  
 Wausau, WI 54401

**715-675-9451**

[www.blcwausau.org](http://www.blcwausau.org)