



St. Anne Parish

Easter 1 2 3 4 5 6 7 8

14 May 2023

LET ME MAKE A CONFESSION: I'm as uncertain as some of you may be as to how one pastor can guide three parishes. Which is not to say I approached with fear and trepidation last weekend's announcement that I would become pastor of St. Michael and Resurrection, as well as St. Anne.

First of all, I won't be doing this alone. I'll be sharing the responsibilities of ministry with talented and dedicated



staff members and deacons, several of whom have told me following the announcement: "Let me know what I can do to help." Of course it's too soon to even know what that might be.

Also, of immense significance, is that we will be welcoming Fr. Al Slowiak to our ministry teams. Fr. Al is no doubt familiar, even well known, to many of you. He's been in the Wausau area for most of his nearly 50 years of priesthood. Some of you may have had him as a teacher at Newman in the 1970s and 80s. Most remarkably, if not inexplicably, he's been the pastor of St. Mark in Rothschild since 1989 – I did the math, he'll hit the 34-year mark before he departs!

In other words, he brings to our parishes and this new situation immense experience, wisdom and familiarity. I have known Fr. Al since 1992 when I was a seminarian and spent six months

See **TRANSITION** on Page 5

"I Know that My Redeemer Lives!"

Medley, Hatton

1. I know that my Re - deem - er lives! What joy the
 2. He lives tri - um - phant from the grave; He lives e -
 3. He lives to si - lence all my fears; He lives to
 4. He lives, all glo - ry to his name! He lives, my

1. blest as - sur - ance gives! He lives, he lives, who
 2. ter - nal - ly to save; He lives in maj - es -
 3. wipe a - way my tears; He lives to calm my
 4. Sav - ior, still the same; What joy this blest as -

1. once was dead; He lives, my ev - er - liv - ing head!
 2. ty a - bove; He lives to guide his Church in love.
 3. trou - bled heart; He lives all bless - ings to im - part.
 4. sur - ance gives: I know that my Re - deem - er lives!

Glory to God

Mass of St. Ann, Ed Bolduc

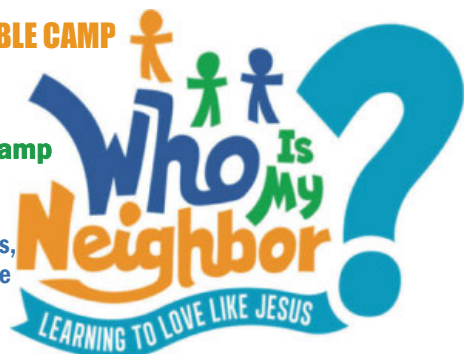
Glo-ry! Glo-ry to God in the high-est. Glo-ry!

Glo-ry to God in the high-est, and on earth peace to peo-ple of good
 will. We praise you, we bless you, we a-dore you, we glo-ri-fy →

REGISTER NOW FOR SUMMER VACATION BIBLE CAMP

CALLING ALL KIDS
- FROM ST. ANNE & BEYOND -
WHO IS MY NEIGHBOR Vacation Bible Camp
July 17-21 at St. Anne

Your child will experience Bible stories exploring our love of God and neighbor, as well as make new friends, sing fun songs, watch dramatic presentations of Bible stories, play active games ... and much more!
 Go to stannesausau.org/biblecamp to register.



Friday & Saturday • June 16-17

Summer Jam!

Friday...
The Third Wheels @ 7pm-11pm

Saturday...
Brad Emanuel @ 1pm-5pm
Frank Childress & The Main Street Band @ 7pm-11pm

LIVE MUSIC

- ✓ Food Truck Rally
- ✓ Bucket Raffle
- ✓ Beer Garden


Hours: Friday 4:30 PM to 11:00 PM
Saturday 11:30 AM to 11:00 PM

\$10,000 IN PRIZES
Tickets \$10 each or 3 for \$25

RAFFLE

St. Anne Parish
700 W. Bridge St. • Wausau
stannesausau.org

ST. ANNE'S SUMMERJAM returns bigger and better than last year! **TAKE RAFFLE TICKETS TODAY** to sell to friends and family. They are in packets, along with flyers to help spread the word, in the entrance-ways.



ST. ANNE PARISH

715.849.3930 | stannesausau.org
700 W. Bridge St., Wausau WI 54401
Parish Office Hours: 9A-4P Mon-Thurs

Fr. Tom Lindner, Pastor
frtom@stannesausau.org | Ext. 309

Deacon Erv Burkhardt
ervb@stannesausau.org | Ext. 303

Kristine Lato, Liturgy Coordinator & Administrative Assistant
kristinek@stannesausau.org | Ext. 307

John Schmitt, Lee Ann Lella
Disciple Formation Co-Directors
johns@stannesausau.org | Ext. 306
leeannl@stannesausau.org | Ext. 308

Paul Hoffer, Finance Director
paulh@stannesausau.org | Ext. 310

Newman Catholic Schools
Jeff Gulan, President
www.NewmanCatholicSchools.com
715.845.5735


JOINING OUR PARISH: Fr. Tom would be glad to talk with you about parish membership. Send him an email at frtom@stannesausau.org or call 849.3930.

CELEBRATING BAPTISM: We gladly welcome children to faith through the waters of Baptism. If you want to raise your child in the Catholic faith and celebrate your child's baptism, please send an email or call Fr. Tom. Parents celebrating the baptism of their first child are asked to complete a baptism orientation seminar.



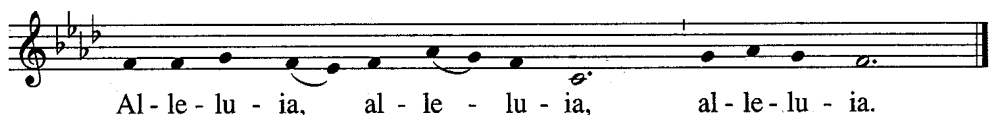
you, we give you thanks for your great glo - ry,
Lord God, heav-en - ly King, O God, al - might - y
Fa - ther. Lord Je - sus Christ, On - ly Be - got - ten Son,
Lord God, Lamb of God, Son of the Fa - ther, you take a -
way the sins of the world, have mer - cy on us; you take a -
way the sins of the world, re - ceive our prayer; you are seat - ed at the right
hand of the Fa - ther, have mer - cy on us. For
you a - lone are the Ho - ly One, you a - lone are the Lord,
you a - lone are the Most High, Je - sus Christ, with the Ho - ly
Spir - it, in the glo - ry of God the Fa - ther. Glo - ry!
Glo - ry to God in the high - est. Glo - ry! Glo - ry to God in the
high - est, and on earth peace to peo - ple of good will. A - men.

Psalm 118, "The Stone which the Builders Rejected" Bernadette Farrell



The stone which the build - ers re - ject - ed has be - come the cor - ner - stone.
Al - le - lu - ia, al - le - lu - ia, has be - come the cor - ner - stone.

Easter Alleluia



Al - le - lu - ia, al - le - lu - ia, al - le - lu - ia.

Profession of Faith (The Apostles' Creed)

I believe in God, the Father almighty, Creator of heaven and earth, and in Jesus Christ, his only Son, our Lord, *who was conceived by the Holy Spirit, born of the Virgin Mary*, suffered under Pontius Pilate, was crucified, died and was buried; he descended into hell; on the third day he rose again from the dead; he ascended into heaven, and is seated at the right hand of God the Father almighty; from there he will come to judge the living and the dead. I believe in the Holy Spirit, the holy catholic Church, the communion of saints, the forgiveness of sins, the resurrection of the body, and life everlasting. Amen.

“A New Commandment I Give to You” Collegetown Composers Group

A new com-mand-ment I give to you, that you love
one an - o - ther as I have loved you. A new com-
mand-ment I give to you, that you love one an-o - ther.

Eucharistic Prayer

Mass of St. Ann, Ed Bolduc

Holy, Holy

Ho-ly, Ho-ly, Ho - ly Lord God of hosts. Heav-en and
earth are full of your glo-ry. Ho - san - na in the
high - est. Bless - ed is he who comes in the
name of the Lord. Ho-san-na, ho-san - na in the
high-est. Ho-san-na, ho-san - na in the high - est.

Mystery of Faith

Save us, Sav - ior of the world, for by your
Cross and Res - ur - rec - tion you have set us free.

KNEELING & STANDING: People at pews without kneelers, if able, are asked to remain standing for the Eucharistic Prayer and throughout the communion procession. At communion time, we remain standing, as a sign of unity, until everyone has received communion.

Stewardship



It seems spring has finally arrived, and with it the need for parishioners to care for the many flower beds and garden areas on our parish campus. If you could occasionally spare a few hours over the course of the summer, please contact the parish office - mail@stanneswausau.org or 715.849.3930 - and we'll get you connected to learn more.

PHILIP UNDERSTOOD VERY WELL Jesus' words: "If you love me, you will keep my commandments." We learn of Philip's devotion to prayer, evangelizing and healing in the region of Samaria; made up of communities that would not be very receptive to the followers of Jesus. Philip is a model steward, living his discipleship day by day in the Lord without being obstructed by feelings of what cost his actions might entail. Good stewards summon the courage to proclaim the Lord and to serve Him by ministering to others. As an Easter people, eager to rejoice in the Lord, it is important to reflect on how we are living out our own commitment to discipleship.

— Catholic International Stewardship Council

PARTICIPATION AT MASS

May 6/7

4 PM - 144; 8:30 AM - 190
10:30 AM - 141; 6 PM - 90; Online - 154

PARISH GIVING

Total collected	May 7: \$18,776
	Weekly need: \$15,773
Total collected (since July 1, 2022):	\$677,530
Amount needed:	\$705,591
Shortfall:	\$ 28,061

**IT'S EASY TO MAKE A CONTRIBUTION:
GO TO STANNESWAUSAU.ORG/
SUPPORTING-ST-ANNE.**

RICE BOWLS ARE BEING GATHERED IN BASKETS IN THE GATHERING SPACE. CASH OR CHECK DONATIONS CAN BE PUT IN THE COLLECTION BASKETS. CHECKS SHOULD BE ISSUED TO "ST ANNE." CONTRIBUTE ONLINE AT CSRICEBOWL.ORG.



Amen



CONSECRATED LOW-GLUTEN HOSTS are available from Fr. Tom as communion is distributed. Communicants will be invited to take a pyx, a container containing the host, and to return the pyx after Mass.

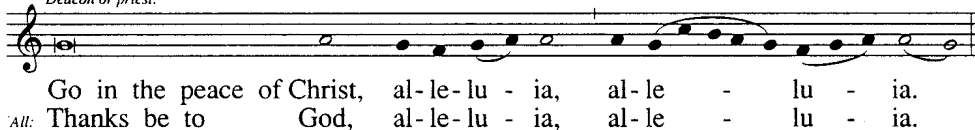
BOWING: The Church asks that worshipers bow slightly toward the Body of Christ and Blood of Christ as we are receiving communion and proclaiming "Amen."

"I Receive the Living God" Bernard Geoffroy, Dom Clement Jacob OSB



Easter Dismissal

Deacon or priest:



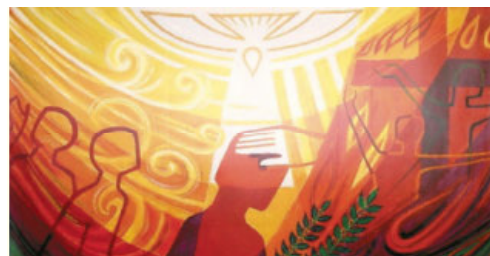
The presider says, "Christ is risen!" All respond, **He is risen indeed!**

"O Holy Spirit, by Whose Breath" Rabanus Maurus, 9th century

vi-brant out of death: Come to cre-ate, re-
love the liv-ing source, Pro-tec-tor in the
var-ied gifts made known. Teach us to speak; teach
love our hearts u-nite. Your pow'r the whole cre-
to the ways of peace. To full-er life your
Spir-it, God the Lord; To whom all hon-or,

new, in-spire; Come, kin-dle in our hearts your fire.
midst of strife, The giv-er and the Lord of life.
us to hear; Yours is the tongue and yours the ear.
a-tion fills; Con-firm our weak, un-cer-tain wills.
peo-ple bring That as one bod-y we may sing:
glo-ry be Both now and for e-ter-ni-ty.

Cover image by Laura James from *Book of the Gospels*, Liturgy Training Publications
Music reprinted under ONE LICENSE #A-729229.



YOUNG MEMBERS of our parish, as well as from Resurrection and St. Michael parishes, will celebrate the sacrament of confirmation during Mass at 4 p.m. Saturday, May 20 at St. Michael. Parishioners are invited to participate in this celebration.

 **This Week**

MONDAY 15 MAY / Acts 16:11-15/Jn 15:26-16:4

TUESDAY 16 MAY / Acts 16:22-34/Jn 16:5-11

- 7 AM - Mass +Edmund & Jeanette Stenzel
- 6:30 PM - Sunday Scripture Study, Gathering Space

WEDNESDAY 17 MAY / Acts 17:15,22-18:1/Jn 16:12-15

- 8:15 AM - Mass +Dolores & Sue Steckbauer

THURSDAY 18 MAY / Acts 18:1-8/Jn 16:16-20

- 7 AM - Mass +Marvin Stencil
- 9 AM - Finance Council

FRIDAY 19 MAY / Acts 18:9-18/Jn 16:20-23

- 7 AM - Mass +Geraldine Radtke

SATURDAY 20 MAY / Acts 18:23-28/Jn 16:23-28

- 9 AM - Reconciliation
- 4 PM - Mass with Sacrament of Confirmation, St. Michael Parish

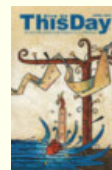
SOLEMNITY OF THE ASCENSION OF THE LORD | 20/21 MAY

Acts 1:1-11/Eph 1:17-23/Mt 28:16-20

- 4 PM Saturday +Clarence & Dorothy Wenzel
- 8:30 AM Sunday +Phyllis & Warren Eschenbach -LIVESTREAM
- 10:30 AM Sunday +Edmund Stenzel
- 6 PM Sunday -People of St. Anne Parish

Links to the daily readings listed above, as well as video and written reflections, can be found at stanneswausau.org.

GIVE US THIS DAY has everything a Catholic Christian might want – an easy-to-follow order of prayer; daily variety in psalms, scripture and intercessions; excellent reflections; and fascinating images of sacred art. And, it's available at a \$10 discount if you join the parish subscription. To learn more and to request a free sample, go to giveusthisday.org. To subscribe, send an email to paulh@stanneswausau.org or call Paul Hoffer at the parish office, 715.849-3930.



TRANSITION / from Page 1

as an intern at St. Mark. It's no exaggeration to say I learned more about being a pastor in those six months than in all the other years of seminary formation. There are still aspects of ministry, particularly in terms of preparing for and presiding at worship, in which I am guided by something Fr. Al told me or, just as likely, something I observed in my months at St. Mark.

We are fortunate that he has chosen to begin this new chapter of his priestly ministry with us!

But, you may be saying ... or maybe it's just me saying it: Why us? Why is this arrangement being forced on us? Why wasn't a new or different priest assigned as pastor of St. Michael and Resurrection, or maybe a new pastor for each?

Those aren't necessarily questions I can answer. However, the answer to the last question, as well as to some degree the others, may be rather apparent: there simply aren't enough of us. That's the reality prompting this entire situation. It's a rather stark foreshadowing of what will continue to unfold throughout the diocese over the next few years — groupings of several parishes in cities and rural areas served by teams of two or three priests. Actually, clusters of three or four rural parishes or two city parishes with one priest have been common for several years. I was pastor of two parishes for a time in Stevens Point. Changing circumstances demand a new approach.

There will likely need to be "new approaches" to several things as we move forward. But, first comes a time of becoming better acquainted, learning what is and has been, listening to people in all three parishes and recognizing potential — and limitations — among all of us, parishioners and priests.

I confessed at the outset to some considerable uncertainty, but I am also hopeful, even confident and eager, as we embark upon this new endeavor of collaborative parish life and ministry. **TL**

APPOINTMENTS

In addition to the recent appointments of Fr. Tom as pastor of St. Michael and Resurrection parishes, and Fr. Al Slowiak as associate pastor of those parishes and St. Anne, Bishop Callahan assigned Deacon Erv Burhardt of St. Anne to also serve St. Michael and Resurrection parishes; and Deacon Peter Burek and Deacon John McDonnell, deacons of St. Michael and Resurrection, were assigned to also serve St. Anne.

Fr. Eric Mashak will remain as chaplain to Newman Catholic Middle School and High School, but he will no longer serve as associate pastor of St. Michael and Resurrection. He has now been appointed associate pastor of Sr. Mark Parish and St. Therese Parish. Fr. Albert Saeth, currently pastor of St. Therese, was also appointed pastor of St. Mark, where he will replace Fr. Slowiak.

These, and other diocesan appointments, take effect July 4.

Partners in Planning LLC
 In alliance with **EQUITABLE ADVISORS**

"A goal without a plan is just a wish." -Antoine de Saint-Exupéry



John Knoll
 FINANCIAL PLANNER CFP®, ChFC, RICP
(715) 845-3196
 2100 Stewart Avenue, Suite 150
 Wausau, WI 54401

Securities offered through Equitable Advisors, LLC (NY, NY 212-314-4600) member FINRA, SIPC. Partners in Planning, LLC is not owned or operated by Equitable Advisors PPG-161625 (8/21)

Parish Member

www.partnersinplanning.financial

RANGER CITY CUSTOM-CUT FRESH BEEF, PORK & CHICKEN
Merrill Distributing Inc.
 SINCE 1912
UniPro
Frostman fish market

*Partner of St. Anne's Lenten Fish Fry. Thank you for supporting St. Anne's Parish.

BADGERLAND
 OVERHEAD DOOR LLC

Wausau, WI
 Complete overhead door and door opener sales, service & installation

715-581-6358 or 715-551-2673

MODERN BUILDERS & SUPPLIERS, INC.
 Designers & Suppliers of Fine Homes
 Bus. Phones: 848-3263 or 845-4258
 Fax 842-3623
 3704 W. Stewart Ave., Wausau, WI 54401-3997

Malbrit Mechanical, Inc.
715-845-4848
 Heating & Air Conditioning Installation • Service • Repair
www.malbrit.com Since 1946

IMAGE MAKERS
 Professional Styling For Entire Family
 SHARON OSTROWSKI
 Owner
842-3915
 601 S. 3rd, Wausau, WI 54401

Culliver's
 WATER TREATMENT & FILTERING SYSTEMS

WAUSAU:
 219 Central Bridge St. • 845-6994
 CEDAR CREEK:
 10202 Park Plaza • 355-0909
 RIB MOUNTAIN:
 225577 Lilac Avenue • 841-0131
www.culvers.com

BRAINARD FUNERAL HOME
 AND CREMATION CENTER
(715) 845-5525
 Wausau East • Weston
brainardfuneral.com

Sprinkler Pete
 Lawn Irrigation Systems
715-581-5384



Ashley Luczaj
 Catholic Financial Life Advisor
 (715) 432-7156

Financial Products Offered:
 Life Insurance
 Annuities
 IRAs
 Medicare Advantage,
 Supplements and Part D Insurance*

Services Offered:
 Family Protection
 401(k) Rollover

15-0049-10/21 Headquartered in Milwaukee, Wis.
 Products and services are not available in all states.
 *Products offered through Catholic Financial Life's Brokerage affiliate, Catholic Brokerage Services Corporation.

FREE WATER TEST
 Call your Culligan Man® today to receive a FREE test of your home's water.
 Dealer participation may vary. See your local dealer for details on this limited time offer. Not valid with other offers.
 © 2022 Culligan International Company.

Culligan Water OF ROTHSCHILD
 715-201-3249 | culliganh2o.com

IF YOU LIVE ALONE
MDMedAlert!™ As Low As **\$19⁹⁵** /mo.
 ✓ Ambulance ✓ Police/Fire
 ✓ Family/Friends ✓ GPS & Fall Alert

CALL NOW! 800.808.9294
md-medalert.com





Cornerstone Advisors
 Annaprize Private Wealth Advisory Practice



Named *Forbes* Best-in-State Wealth Advisor

Visit Website for Details

- Financial Planning
- Retirement Planning
- College Planning
- Investments
- Estate Planning

(715) 849-3697
 CornerstoneAdvisors-Wisconsin.com



Peterson/Kraemer
 Funeral Homes & Crematory Inc.

Wausau East/Wausau West
(715) 845-6900



OSUN
 PRINT | MAIL | CREATIVE

1800 GRAND AVE • WAUSAU
 SUNPRINTING.COM
 715-845-4911



Helke
 Funeral Home
 and Cremation Services

Dean Welker, Parish Member
842-3993 • helke.com
 320 Spruce St., Wausau



Join our Team!

Serve your local Catholic Community, become an agent with the Knights of Columbus!
 Contact us at www.kofcwi.org

Life Insurance • Disability Income Insurance
 Long Term Insurance • Retirement Annuities

Tim J. Nowak, FICF
 General Agent
 (920) 810-6188
timothy.nowak@kofc.org



Knights of Columbus

Carmelo's
 Italian Restaurant

(715) 845-5570
 3607 N Mountain Rd
 Wausau

Open 5pm Daily

www.carmeloswausau.com



Cloverbelt Credit Union
 Great Rates You Can Bank On®

Wausau & Weston
715-842-5693
 Parish Members

Trucking • Bulldozing • Excavation • Demolition
 Insured and Bonded

DRAEGER
 TRUCKING & EXCAVATING, LLC

Marathon, WI

Snowplowing - Sanding - Salting - Snow Removal
 Commercial & Residential Site Developers

Chris Draeger, Owner (715) 443-2416



catholicmatch®
 Wisconsin

CatholicMatch.com/WI



ellis CONSTRUCTION

Built Right.™
 715-345-5000 www.elliswi.com



Harmony Hills Pet Resort

Boarding • Daycare • Grooming

715.675.3141
www.facebook.com/harmony/hillspetresort



MENZNER HARDWOODS
 Leading Manufacturer of Hardwood Mouldings and Veneered Products

715-443-2354 • 105 Main St. Marathon WI • menznerhardwoods.com

www.athensvetservice.com
 Visit our Website & Online Store



My VetStore
 Online

(715)257-7003




REACH

Work-from-anywhere solutions for your home or mobile office.

715.298.4414
ReachConnects.com

LIFE GOES BY in a flash LIVE BRILLIANTLY!



JIM KRYSHAK JEWELERS
 Diamonds Fine Jewelry

715.241.7557 • 226500 Rib Mountain Dr. • Wausau, WI

LET'S GROW YOUR BUSINESS
 Place Your Ad Here and Support Our Parish!

CONTACT ME
Gary Stang

gstang@4LPi.com
(800) 950-9952 x5838


LET US HELP PROTECT YOUR DREAMS.



Jamie Schlei Agency, LLC
 3806 Schofield Ave Ste 3
 Schofield, WI 54476
jschlei@amfam.com
 (715) 359-2400

American Family Mutual Insurance Company, S.S. and its Operating Companies
 American Family Insurance Company, American Family Life Insurance Company, 6500 American Parkway, Madison, WI 53718 01000 - New 217 620115 - 9501919

AMERICAN FAMILY INSURANCE
 24-HOUR CLAIMS REPORTING & CUSTOMER SERVICE 1-800-MYAMFAM (662-6326)
 HOME | AUTO | LIFE | BUSINESS | FARM & RANCH AMFAM.COM



HOUGUM LAW FIRM, LLC
 ESTATE PLANNING & ELDER LAW

Asset Protection
 Trusts • Wills • Probate
 Nursing Home/Medicaid

Serving all of Wisconsin with offices in Wausau & Rhinelander

715.843.5001
hougumlaw.com



THE DIRKS GROUP
 Beyond the Network

dirksgroup.com • 715-848-9865



TALL PINES
 Counseling and Evaluations for Professionals and Families

(715) 301-0267 www.tallpinesbh.com



715-845-3171
 3650 Stewart Ave.
 Wausau, WI 54401

NEW PATIENTS WELCOME
 Steven B. DeMille, D.D.S.
 Denise L. Long, D.M.D.
 Adam Manteuffel, D.D.S.
www.wausaufamilydental.com



AIRQUALITY CONTROL

4007 Central Drive
 Wausau, WI 54401
715-845-5111
aqcllc@frontier.com

- Commercial HVAC
- HVAC Facilities Maintenance
- Commercial Kitchen Ventilation
- Industrial Ventilation
- Dust Collection Systems
- Architectural Metal Fabrication
- Light Structural Steel Fabrication
- Sheet Metal Fabrication



LINDNER PLUMBING LLC

715-610-0370



Benedictine
 LIVING COMMUNITY | WAUSAU

SHORT-TERM REHAB AND LONG-TERM CARE

1821 N. Fourth Avenue,
 Wausau, WI 54401

715-675-9451
www.blcwausau.org




John Neumueller Ins Agency Inc
 John Neumueller
 CLU, ChFC, CASL, LUTCF, CPCU, Agent
 Offices in Wausau & Marshfield
www.insurancewausauwi.com
 Bus: 715-675-3324

State Farm, Bloomington, IL 2001739



Eyecare center of wausau

611 Stevens Dr.
 Wausau, WI
715.848.2020

Dr. Gregory Leischer
 Dr. Kelsey Koerner
 Dr. Lauren Leurquin
eyecarecenterwausau.com



WAUSAU MANOR HEALTH SERVICES

...The Right Choice

Call **715.842.0575**
www.wausauhs.com
 3107 Westhill Dr. • Wausau, WI