

Happenings

Village of Richfield

4128 Hubertus Road
Hubertus, WI 53033



Village Board

John Jeffords (President)

(262) 628-0385

Dan Neu

(262) 628-0177

Rock Brandner

(262) 628-1665

Bill Collins

(262) 628-4278

Tom Wolff

(414) 520-3566

Village Staff

Village Administrator

(262) 628-2260 Ext. 115

Public Works Supervisor

(262) 628-2260 Ext. 118

Deputy Clerk

(262) 628-2260 Ext. 111

Deputy Treasurer

(262) 628-2260 Ext. 114

Building Inspector

(262) 628-2260 Ext. 117

Administrative Services

(262) 628-2260 Ext. 113



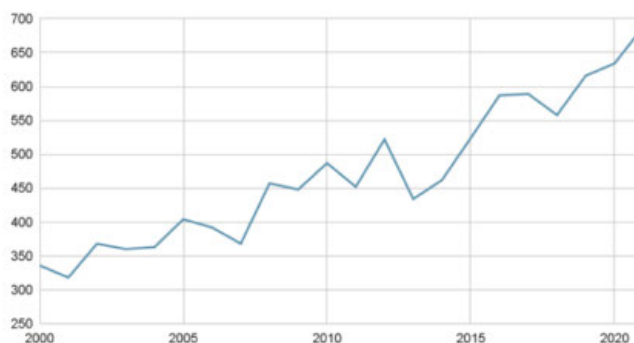
January/February 2022

Fire Chief Tony Burgard and the Fire Company Need You

I'd like to take this opportunity to update the community on a serious issue facing the Richfield Volunteer Fire Company (RVFC): the dire need for volunteers to provide both fire and EMS services. The RVFC is not a municipal fire department. We are a private non-profit company that contracts its services to the entire Village of Richfield, the Town of Germantown, 8 square miles in the Town of Erin, and 3 square miles in the Town of Polk. We operate as a "combination department", which means that we operate with both paid and volunteer staff, and rely heavily upon the majority of the membership as volunteers (also called paid-on-call or POC's). Station #2 on Hubertus Road is staffed with personnel during weekdays, Monday through Friday, from 8AM to 6PM. Outside of these hours, the Village relies heavily on the use of our volunteers. When responding outside of staffed hours, at the time of alarm, members drive from their homes to the fire station, gather in the appropriate piece of emergency apparatus, and respond to the emergency incident.

As 2021 came to a close, we finished our busiest year in the history of the Fire Company. This past year we responded to 141 fire calls and 548 EMS calls, totaling 689 calls for service. This resulted in an increase of 55 calls over 2020's incident total of 634 calls for service. The chart to

20 Year Call Trend



the left shows the trend of calls over the past 20 years, with the RVFC more than doubling our call volume in that 20 year time period. This is consistent with recent State and National trends in the emergency services world where call volumes continue to grow annually.

What is most troubling is the membership of the RVFC has seen the opposite trend. The chart on the next page shows that at the end of 2021 the total amount of active volunteer members was 33 people, which is less than half of the membership in 2012 at 76 people. Why the constant decline in volunteers? There is no one singular answer, but there are a few recurring themes. Our membership decline aligns with National trends where volunteer members are decreasing at an ever-increasing rate. As the population makeup of Richfield continues to evolve from the early rural farming community to a more urbanized suburban community with families commuting to and from local metropolitan business areas, we have less and less people in town who desire to do this type of important and necessary work.

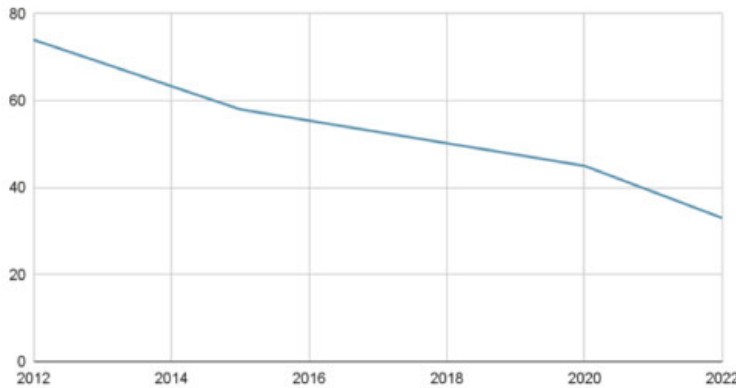
..Continued on Pg. 2

Continued from Pg 1...

The lack of rental options and diverse housing stock and other non-single-family homes provides a difficult situation for those who are looking to serve the community, but no longer live at home with their parents. Not to mention the current cost of a home in our area is well in excess of \$300,000 which makes finding a "starter home" for younger families in the area very difficult. The declining amount of younger families moving to our community is also the same reason our Holy Hill Area School District sought consolidation only a few short years ago.

To help combat the increasing call volume and declining membership, in 2022 we had to make yet another change in staffing models, similar to other departments in our County. An additional employee was hired full-time, for a total of five (5) full-time employees. Three (3) of these employees, who are trained to the paramedic level of EMS care, were then moved to a 24-hour

Number of POC's



rotating shift. As of January 1st, one (1) of these three (3) employees is in the fire station at all times. This will allow for greatly reduced response times where a trained paramedic is routed to a medical emergency immediately from the station at the time of 911 dispatch notifying us rather than going from their home, to the Station, and then mobilizing. In the case of an emergency, these precious minutes mean lives. During weekday daytime hours, two (2) additional paid employees will respond with the ambulance at the station. For calls occurring on nights and weekends, two (2) volunteers will be responding directly to the scene to create an ambulance crew.

This is a helpful step forward to making sure that in the event of an emergency, someone will be there to respond to your 911 calls. But, to fully support the growing needs of the communities we serve and our declining volunteer membership, more must be done. This short-term solution does not address our long-term needs. A five-year plan has been developed by the Fire Company to ensure that future staffing levels meet the needs of our growing community and to help more equitably distribute the call volume among the volunteer members. This involves potentially hiring an additional employee each year for the next five (5) years. One (1) full-time employee will be needed to work the weekday daytime position to build staffing levels back up to pre-2022 staffing levels. Three (3) additional employees are needed to work the rotating 24-hour schedules so that two (2) full-time employees are at the station around the clock, which means we will need only one (1) volunteer for most "first out" EMS calls on nights and weekends. And finally, one (1) full-time equivalent employee is needed to cover vacation and sick time on the rotating 24-hour shift. But we need your help if this new proposed staffing model is delayed for years to come. So, what can you do? First, we always need volunteers. If you have ever considered helping out your neighbors in time of need, please contact the fire station to learn more about how you can volunteer. We pay for all training and equipment needed to obtain State of Wisconsin certifications in Fire or EMS, and also pay hourly while these members are on an emergency incident. Growing the number of volunteers we have in our Company will help *delay* additional staffing needs. Secondly, this is a conversation that we need to continue having. This is an important topic that impacts each of our 11,800 residents.

The financial reality is that the increases of this 5-year plan far exceeds the Village's ability to pay. As a result, a referendum may likely be needed to support the needs of the Fire Company for years to come. For 2022, all of the Village's new growth that we could tax for (net new construction) went to the Fire Company. This was an increase in the Village's property tax levy of less than 1%. Even with that additional \$30,000, to bring our operating budget to \$590,000, we had to make changes to our equipment replacement schedule to help make up the difference in cost of the one (1) additional staff member. But the additional staffing needs we discussed cannot be met by doing one-time budget fixes. More information on this will be forthcoming on how we plan to provide the best opportunity for those to volunteer in their community, and provide the best and fastest emergency services that we can with the combination of paid and volunteer staff members who have served our community for the last 100+ years.

Fire Chief Tony Burgard, Richfield Volunteer Fire Company

Getting to Know a New Village Employee!

Meet Joe Tillmann! Joe started with the Village this past November as the Building Inspector to fill Joel Jaster's position when Joel retires. Joe met his wife, Nicole, in 2017 and they were married in July of 2019. In October of 2020, their family moved from Milwaukee to Mayville and they love their new home! Joe and Nicole currently have their four (4) children living with them: Thurston who is 22, Angelina who is 15, Christian who is 14, and Isaac who will be nine (9) this January. They also have a dog named Harley, who is a three (3) year-old female mixed breed dog. In his free time, Joe loves hiking with his family, vacationing in Louisville, smoking meats, and cooking with his wife. Read below to learn more about Joe!



Favorite saying: "Tough times don't last. Tough people do."

Favorite T.V. show: "My wife and I watch *Good Mythical Morning* on YouTube every night."

Favorite musical artist and/or favorite song: "This is impossible to answer. I love music and would have a hard time picking a favorite as it really depends on my mood. I listen mostly to hard rock, though, and I have probably been to over 100 concerts."

If you could only eat one meal for the rest of your life, what would it be?:
"Steak with mashed potatoes and asparagus."

Burn Permits

In 2021, over 500 burning permits were issued to Village of Richfield property owners. Those who prefer to burn yard waste, such as tree branches or fall leaves, are encouraged to do so upon approval of an annual or monthly burning permit. Please be advised that burn permits aren't required for campfires. A permit may be obtained online or at Village Hall at the front counter. The fee for burn permits is \$15.00 for an annual permit or \$3.00 for a monthly permit. Please note, an annual burn permit is valid from January to December of the current calendar year.



First Installment of Property Taxes Due January 31

The first installment of property taxes is due by January 31st. Property taxes can be paid by mail, in-person at Village Hall, online, by phone, or by dropping off payments in the Village Hall drop-box.



NOW HIRING

MANAGERS & DAY CREW
GREAT STARTING WAGE
FLEXIBLE SCHEDULES
50% OFF-DUTY DISCOUNT
FREE SUB MEAL EVERY SHIFT
\$2500 SCHOLARSHIP OPPORTUNITIES
EARNING TIPS (AVG. \$1/HR)
REFER YOUR FIRENDS FOR A \$100 BONUS
FUN, FAMILY STYLE WORK ENVIRONMENT

Text **BETTER** to 414-877-1433 or apply at work4cousins.com

3051 Holy Hill Rd
Richfield, WI 53076

SUPPORT OUR ADVERTISERS!



MEREDITH

TREE REMOVAL & FIREWOOD

FREE ESTIMATES
FULL TREE REMOVAL
LOT CLEARING
TREE TRIMMING
WOOD CHIPPING
STORM DAMAGE
FULLY INSURED

Meredithtree.com
Meredithtreeremoval@gmail.com
262-496-8004



AVAILABLE FOR A LIMITED TIME!
ADVERTISE HERE NOW!

Contact **Jeff Parkinson**
to place an ad today!
jparkinson@lpicommunities.com
or (800) 950-9952 x5887



David Beachem, DVM

Medicine, Surgery & Preventative Health Care

1275 Morgan Drive
Hubertus, Wisconsin

Complete Veterinary Pet Care

Hours by Appointment
Phone: 262-628-7272
www.RichfieldVet.com

forte bank

Richfield Branch

1297 State Hwy 175 262-628-5500 www.fortebankwi.com



Tina Captain
Branch Manager



Wendy Christenson
Mortgage Lender
NMLS #417436



Lisa Becker
Business Services Banker



2022 Election Dates - Mark Your Calendar!

Spring Primary - February 15 (For Germantown HS and Hartford HS School Boards, only)

Spring Election - April 5

Fall Primary - August 9

General Election - November 8



Photo ID Required to Vote!



Voters must show an acceptable photo ID to receive a ballot by mail, in-person at the Clerk's Office, or at the polls on Election Day!

Don't delay! Apply now for a FREE Wisconsin State ID Card.

For more information on how to obtain an ID, visit the Wisconsin Division of Motor Vehicles website at wisconsin.gov and go to the Voter ID Petition Page.

Are You Registered to Vote?

Voter Registration Information

Applicants can register to vote in the following ways:



- Register online through MyVote Wisconsin at: myvote.wi.gov
- Submit a Voter Registration Application by mail
- Register in-person in the Clerk's Office
- Register at the Polls on Election Day

All applicants **MUST** provide a Proof of Residence document when registering to vote by mail, in-person in the Clerk's Office, or at the Polls on Election Day. A Proof of Residence document is a document that the applicant provides with their Voter Registration Application that proves where the applicant lives. Applicants must be a resident in the municipality they are registering in for at least **28** consecutive days.

If registering to vote online through MyVote Wisconsin, you do not need to provide a Proof of Residence document; however, your name and address must be current and match the Wisconsin DMV's database.

Please visit www.elections.wi.gov for a complete list of what documents can be used for Proof of Residence. You may present your Proof of Residence document as a hard copy or by showing an electronic document from your smartphone or tablet.

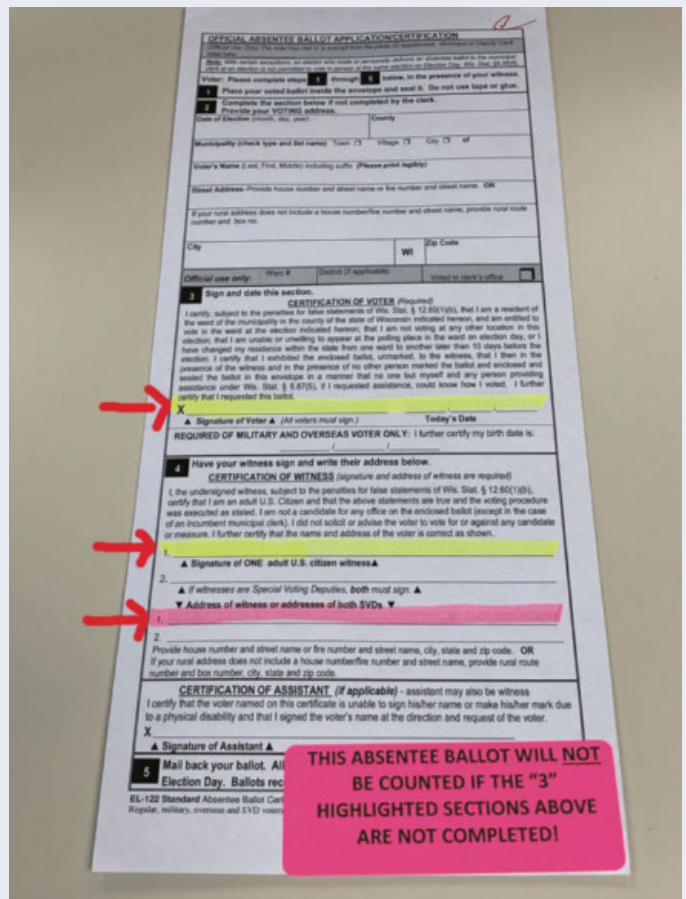
Please email Deputy Clerk, Donna Cox, with any questions at deputyclerk@richfieldwi.gov or by calling 262-628-2260 Ext. 111.



Voting By Absentee Ballot?

To ensure your absentee ballot is counted, refer to the Certificate Envelope below...

Be sure to complete all of the required highlighted fields on your absentee ballot Certificate Envelope!



Your Local United Way at Work

Did you know that people in our community in need of health and human services have a variety of places to reach out for help? United Way of Washington County is a local nonprofit that funds services to help residents through 29 programs of 20 agencies within three (3) pillars: Education, Health and Financial Stability. Programs funded by United Way include counseling services for addiction and mental health, shelters, aging, youth development, domestic violence, and food distribution. United Way is all about accountability. Last year, 80% of youth enrolled in educational programs increased or maintained expected academic performance. We also saw 79% of individuals in shelters obtain employment opportunities through case management services.


In 2021, United Way began an investment in a mental health initiative as a result of the pandemic. United Way had identified this issue as a major problem pre-COVID-19 and the pandemic increased the issues surrounding mental health to an even higher level. More and more children and adults have shown an increase in mental health issues affecting their lives. The mental health initiative targets youth and children in schools and their families. United Way helps anyone in need of services through individual counseling and case management services. We are targeting schools and working through partner agencies such as Catholic Charities and Youth & Family Project to identify anyone in need of services to get the help they need.

In addition to funding programs at area nonprofits, United Way supports the 2-1-1 Helpline. This is an easy to remember 3-digit phone number to call 24/7 when you are in need of community services. A trained counselor will assist and connect you to services provided by nonprofits and/or government programs.

United Way of Washington County has been serving our county since 1936. It is an independent and autonomous nonprofit governed by a Board of Directors comprised of residents and leaders. For more information on United Way and the services provided to individuals and families in need, please contact Kristin Brandner at United Way of Washington County by phone at 262-338-3821, or by email at kbrandner@unitedwayofwashingtoncounty.org.



United Way of Washington County



BOB SCHULTZ
262-328-6042
BOB@HOMESCANINSPECTIONSLLC.COM
WWW.HOMESCANINSPECTIONSLLC.COM

COMPREHENSIVE INSPECTIONS FOR INFORMED INVESTMENTS
HOME INSPECTIONS • RADON TESTING • AIR QUALITY SURVEYS • WATER QUALITY TESTING

List or Buy with me, use my moving truck for free!

Carolyn Ingham
ABR, CRS, GRI, SRES



Cell: 262-993-4163
Home: 262-628-4180
Email: cingham@shorewest.com
Holy Hill Specialist Since 1992



Expect better... Brenda Keene - Real Estate Sales Agent



- A professional who is dedicated to exceptional service
- A person who is honest, courteous, and kind
- A local agent who will be with you throughout the entire journey

If you have a home to sell or are looking to buy I would love the opportunity to help.

Cell: (262) 893-6613
brenda@kwsrealty.com



RICHFIELD SAFE COMPANY
Located Inside The Range of Richfield
North of Cabela's at the Hwy 45/145 Split
AUTHORIZED LIBERTY SAFE DEALER
262.649.6411
Richfieldsafe.com



RV Sales - Service - Accessories
LP Gas Refill Station
3284 STATE HWY 145 • RICHFIELD
262-674-1577
www.roskopfsrv.com



O'DONNELL SERVICES

LANDSCAPE Grass Cutting Trim & Edge Fertilizer Patio Decks Retaining Walls Re-Grading Mulch Seasonal Cleanup	ROOFING Siding, Doors Windows Fertilizer Tear Downs Shingles Repairs Waterproofing Tuck Pointing Rubber Roofing	SNOW REMOVAL Commercial Residential Sidewalks Driveways Salt
---	---	--

414-791-0190
Jake O'Donnell
Owner

FREE ESTIMATES



Serving individuals, families, and businesses throughout Southeastern Wisconsin
Debbie Frydach (262) 437-0036
www.frydachinsurance.com
W175N1163 Stonewood Dr. Ste 229, Germantown, WI

INDUSTRIAL • RESIDENTIAL
PAVING • SEALING


ALLPRO ASPHALT PAVING INC.
FULL SERVICE PAVING CONTRACTOR
JERRY MUELLER RICHFIELD, WI
262-628-1599
www.allproasphalt pavinginc.com




BERNDT-LEDESMA
Funeral Home

Hartford 226 S Main St. Hartford WI 53027 262.673.4700	Hustisford 136 N Lake St. Hustisford, WI 53034 920.349.3349	Juneau 150 W Oak Grove St. Juneau, WI 53039 920.386.2361
--	---	--

Family owned and managed by Greg and Carla Ledesma
At the Berndt-Ledesma Funeral Homes, we offer affordable funeral and cremation services, personalized memorialization and funeral pre-planning.
www.berndt-ledesma.com



My Choice Wisconsin is a managed care organization that serves government-funded programs to seniors and adults with disabilities in over 50 Wisconsin counties.

Visit us today:
mychoicewi.org/LPI
1-800-963-0035

For more information on your long-term care options, contact your local ADRC.

DHS Approved 4/22/2021

my choice WISCONSIN

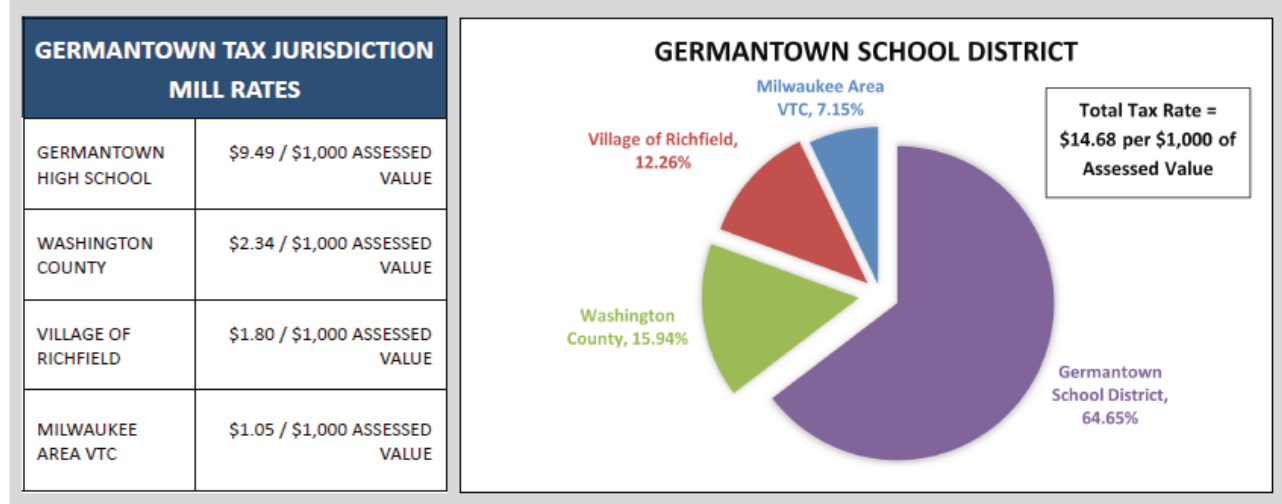
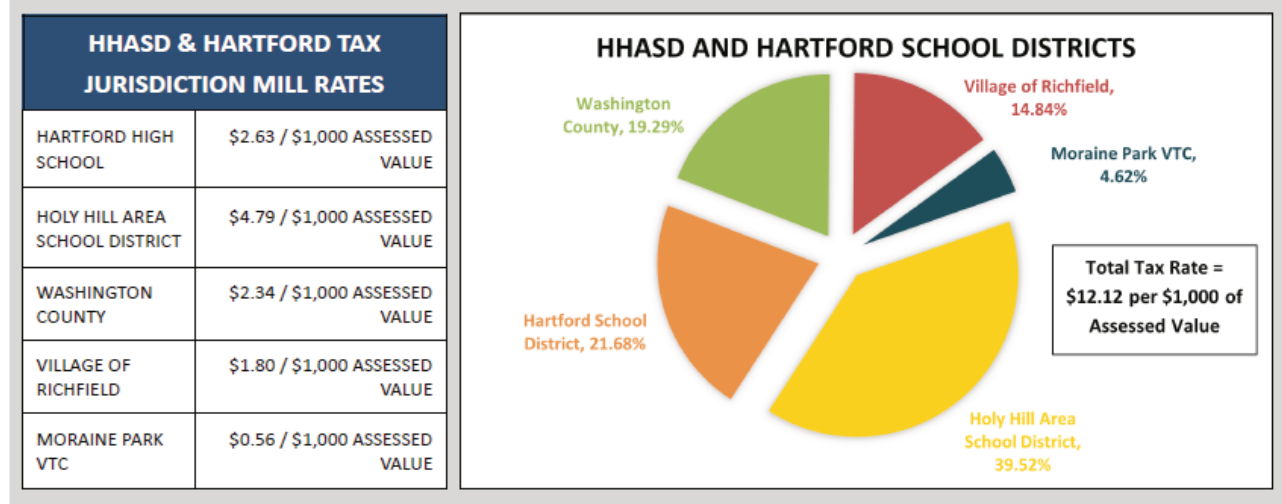
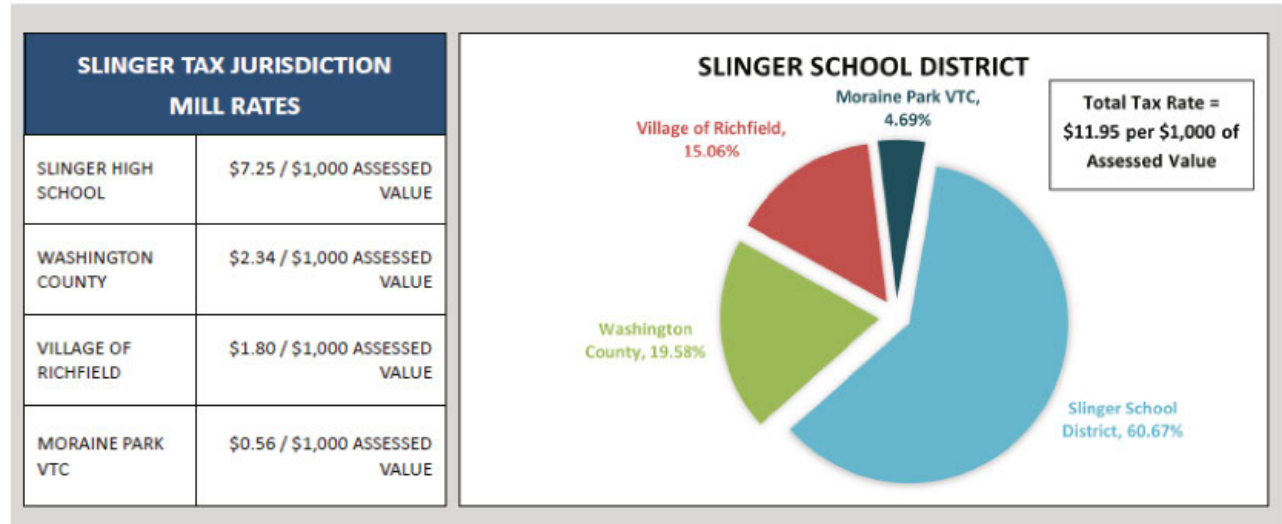
My Choice Wisconsin is a managed care organization that serves government-funded programs to seniors and adults with disabilities in over 50 Wisconsin counties.

Visit us today:
mychoicewi.org/LPI
1-800-963-0035

For more information on your long-term care options, contact your local ADRC.

DHS Approved 4/22/2021

WHERE DO YOUR 2021 PROPERTY TAX DOLLARS GO?



Village Assessor Annual Report - 2021

The Assessor performed a revaluation of all properties in the Village for the 2021 assessment year. This is a larger scope of work than a typical annual maintenance assessment. All assessed values were recalculated using a new valuation model that the assessor developed primarily from real estate sales within the Village from 2019 to early 2021. The goal of the revaluation was to bring the Village's assessed values to 100% market value by revaluing all properties under current market conditions as of January 1st, 2021.

State law requires municipalities to undergo assessment revaluations periodically, in order to keep assessments current with changing market conditions, and to ensure that the property tax levy is distributed fairly among all taxable properties. The Village's real estate assessed value increased by about \$264 million in 2021 as a result of the revaluation. This represents a 16% increase in assessed value and tax base for the Village. This increase includes approximately \$29 million of new construction value. According to the Wisconsin Department of Revenue, the total value of all taxable property in the Village of Richfield has increased from \$1.88 billion to \$2.01 billion, or about 7.2%, from 2020 to 2021. This increase falls roughly in line with Washington County's overall increase of 7.5% over the same time period.

Moving forward into 2022, the assessor will be performing basic annual maintenance assessment work. The assessment staff will continue to physically visit properties and update assessment records for all properties that have sold during the previous calendar year, as well as all properties with changes due to new construction, remodeling, or demolition. As always during our field inspection cycle, if no one is home at the time of the visit, we will leave a doorhanger on the main entrance with instructions on how to setup an appointment. Our staff will be carrying photo ID tags and driving red fleet vehicles, clearly displaying our company name, so that we are clearly recognizable. We will be courteous and professional in our communications with all property owners.

The following is a summary of the tasks completed for the 2021 assessment cycle:

- Completed 656 property inspections in the field, verified and updated property records, and adjusted values as necessary.
- Developed a mass appraisal valuation model to fit local conditions and all property types in the Village of Richfield, which was tested and validated against sale prices in the Village.
- Revalued 100% of the Village's taxable real estate parcels.
- Revalued 100% of the Village's business Personal Property assessments.
- Entered building permit data into Market Drive software for each parcel that was issued a building permit in the 2020 calendar year.
- Reviewed all sales of real estate from 2020 within the Village to determine which sales were arm's length sales and which were not.
- Reported sales validations to Department of Revenue, along with all property attributes for all valid arm's length sales.
- Performed a sale ratio study to determine the ratio of assessed value to sale price for all valid sales.
- Identified which properties required field visits for 2021.
- Performed field inspections to gather data for updating assessment records, reviewing sales, building permits, and requests by property owners.
- Updated property records with all new information obtained from field visits.
- Completed new assessed values for personal property and real estate and provided an updated assessment roll to Village Staff.
- Mailed over 5,000 notices of assessments to owners of all taxable properties in the Village.
- Conducted Open Book meetings at Village Hall on Monday, June 28th at Village Hall and by telephone, and on Tuesday, June 29th by telephone or virtual meeting.
- Held the Board of review meetings on July 20th and August 10th to hear formal objections to assessments and finalize the 2021 assessment roll.

As always, we will continue to respond to phone inquiries by property owners, as well as requests for information from realtors and appraisers. Associated Appraisal's corporate office is located in Appleton at W6237 Neubert Rd, Appleton, WI 54913. The new company mailing address is P.O. Box 440, Greenville, WI 54942. Our telephone number is 920-749-1995 and our website is www.apraz.com.

It is a pleasure working with the Village Staff and we look forward to continuing our positive working relationship with the Village of Richfield and its residents. For questions or comments, I can be reached directly by phone at 920-224-8803 or by email at deanp.apraz@gmail.com.

Thank you!

Dean W. Peters, Vice-President of Maintenance Services, Associated Appraisal Consultants, Inc.

VILLAGE OF RICHFIELD 2022 TRANSFER STATION SCHEDULE

THE TRANSFER STATION IS OPEN THE 2ND AND 4TH THURSDAYS OF EVERY MONTH FROM APRIL - NOVEMBER (6 PM TO 8 PM) *except holidays

THE TRANSFER STATION IS OPEN ON THE 1ST AND 3RD SATURDAYS OF EACH MONTH ALL YEAR (7 AM TO 1 PM) *except holidays

PLEASE NOTE: THE TRANSFER STATION WILL BE CLOSED SATURDAY, JUNE 4TH DUE TO A SOCCER TOURNAMENT IN HERITAGE PARK

January						
Sun	Mon	Tue	Wed	Thur	Fri	Sat
						1
2	3	4	5	6	7	8
9	10	11	12	13	14	15
16	17	18	19	20	21	22
23	24	25	26	27	28	29
30	31					

February						
Sun	Mon	Tue	Wed	Thur	Fri	Sat
		1	2	3	4	5
6	7	8	9	10	11	12
13	14	15	16	17	18	19
20	21	22	23	24	25	26
27	28					

March						
Sun	Mon	Tue	Wed	Thur	Fri	Sat
		1	2	3	4	5
6	7	8	9	10	11	12
13	14	15	16	17	18	19
20	21	22	23	24	25	26
27	28	29	30	31		

April						
Sun	Mon	Tue	Wed	Thur	Fri	Sat
					1	2
3	4	5	6	7	8	9
10	11	12	13	14	15	16
17	18	19	20	21	22	23
24	25	26	27	28	29	30

May						
Sun	Mon	Tue	Wed	Thur	Fri	Sat
1	2	3	4	5	6	7
8	9	10	11	12	13	14
15	16	17	18	19	20	21
22	23	24	25	26	27	28
29	30	31				

June						
Sun	Mon	Tue	Wed	Thur	Fri	Sat
			1	2	3	CLOSED
5	6	7	8	9	10	11
12	13	14	15	16	17	18
19	20	21	22	23	24	25
26	27	28	29	30		

July						
Sun	Mon	Tue	Wed	Thur	Fri	Sat
					1	2
3	4	5	6	7	8	9
10	11	12	13	14	15	16
17	18	19	20	21	22	23
24	25	26	27	28	29	30
31						

August						
Sun	Mon	Tue	Wed	Thur	Fri	Sat
	1	2	3	4	5	6
7	8	9	10	11	12	13
14	15	16	17	18	19	20
21	22	23	24	25	26	27
28	29	30	31			

September						
Sun	Mon	Tue	Wed	Thur	Fri	Sat
				1	2	3
4	5	6	7	8	9	10
11	12	13	14	15	16	17
18	19	20	21	22	23	24
25	26	27	28	29	30	

October						
Sun	Mon	Tue	Wed	Thur	Fri	Sat
						1
2	3	4	5	6	7	8
9	10	11	12	13	14	15
16	17	18	19	20	21	22
23	24	25	26	27	28	29
30	31					

November						
Sun	Mon	Tue	Wed	Thur	Fri	Sat
		1	2	3	4	5
6	7	8	9	10	11	12
13	14	15	16	17	18	19
20	21	22	23	24	25	26
27	28	29	30			

December						
Sun	Mon	Tue	Wed	Thur	Fri	Sat
				1	2	3
4	5	6	7	8	9	10
11	12	13	14	15	16	17
18	19	20	21	22	23	24
25	26	27	28	29	30	31

THE FOLLOWING ITEMS ARE ACCEPTED WITH DISPOSAL CHARGES:		
FREON APPLIANCES (AC units, freezers, refrigerators, dehumidifiers, etc.)		\$30.00
GAS CANS, DRUMS UP TO 55 GALLONS		\$10.00
LUMBER (metal hardware should be removed):		
RAILROAD TIES		\$2.00
5 SMALL PIECES OR LESS		\$5.00
SMALL QUANTITIES		\$8.00
PICKUP, TRUNK, TRAILER LOAD		\$15.00
DUAL AXLE TRAILER		\$20.00
MICROWAVES		\$25.00
PROPANE TANKS (with valves not removed)		\$15.00
TELEVISIONS, MONITORS		\$25.00
TIRES:		
CAR TIRES (with or without rims)		\$10.00
LARGE TRUCK TIRES		\$20.00
PICKUP TRUCK TIRES, RACING TIRES		\$15.00
WATER SOFTENERS		\$25.00
YARD/GARDEN WASTE, LEAVES & BRUSH, GRASS:		
4X8 TRAILER, TRUNK, OR TRUCK LOAD		\$5.00
DUAL AXLE TRAILER OR LARGER		\$10.00

THE FOLLOWING ITEMS ARE ACCEPTED AT NO CHARGE:		
AUTOMOTIVE TYPE BATTERIES		
LIGHT FIXTURES		
(oil-filled ballasts must be removed from fixtures)		
LOGS AND FIREWOOD		
MOTOR OIL		
NON-FREON APPLIANCES		
(dishwashers, dryers, hot water heaters, pressure tanks, washers, stoves)		
PROPANE TANKS		
(gas must be drained and valves must be removed)		
SCRAP METAL		
(gas, oil & grease should be drained from all machines)		

THE FOLLOWING ITEMS ARE NOT ACCEPTED:		
ANTIFREEZE	MERCURY SWITCHES	
ASPHALT	MIRRORS	
OIL FILLED BALLASTS	N-CAD BATTERIES	
FOUND IN LIGHTS	NEWSPAPER	
BLOCKS & PAVERS	PAINT	
CAPACITORS	PAINT CANS	
CARDBOARD	PIPE OR TUBING	
CARPETING	PLASTIC	
COMPUTERS	PRINTERS	
CONCRETE	ROCKS	
COPY MACHINES	SMOKE ALARMS	
COUCHES	SOD	
DIRT OR SOIL	STUMPS	
DRYWALL	STYROFOAM	
FLASHLIGHTS	TOILETS	
GLASS	TRANSFORMERS	
HAZARDOUS WASTE	TRASH	
HOSES	UPHOLSTERED FURNITURE	
KEYBOARDS		
MATTRESSES		

The Transfer Station is located at:
1345 Hillside Road, Hubertus, WI 53033

Rev 11/1/2021

CONTRACTORS AND COMMERCIAL ENTERPRISES ARE PROHIBITED

Public Works Winter Reminders

As the Village enters the early months of winter weather, the Public Works Department's primary focus is to ensure that the roads are safe and traversable for the traveling public. The Village is responsible for plowing 309 "lane miles" which are handled by eight (8) plow trucks that each have their own intricately designed route. One area where our experience and usage have grown in Richfield in the last few years is with our use of salt brine, used to help combat Wisconsin weather. Salt brine is a precise mixture of salt and water, that when mixed properly at 23.3%, the brine hits its eutectic temperature of -6 degrees Fahrenheit. There are two (2) different ways the Village is using brine. Anti-icing is used prior to a winter weather event to prevent snow and ice from bonding to the pavement surface. The second method is pre-wetting. Pre-wetting occurs during a winter weather event while the plow truck is plowing and salting. The truck is equipped with tanks of brine that directly spray the granular salt as it's being applied to the road surface. This helps the granular salt from bouncing off the road surface and activates the salt immediately. This saves the Village money each year and limits the amount of salt that can bounce into the ditch lines that could potentially make its way into our freshwater systems, and ultimately our groundwater.

While our Public Works Department works hard to clear our roadways, I would like to remind motorists and residents of a few things that help our Plow Operators immensely while they are responding to a snow event. First, please make sure to give plows plenty of room when driving near them on the roadways. Remember, if you cannot see their mirror(s), they cannot see you! Second, garbage and recycling receptacles should be clear of the roadway during snow removal operations. Additionally, please obey the winter parking ordinance (Ordinance 351-40) and keep parked vehicles off the roadways. Third, please remember to not throw or push snow from your driveway into or across the street. Finally, in Wisconsin, driving conditions can deteriorate quickly! We ask all drivers to prepare themselves and their vehicles with the necessary winter driving equipment and also allow extra time to reach their destinations. Drivers should ALWAYS be prepared for the unexpected and respond accordingly.

Brett Thicke, DPW Supervisor

JOIN OUR FAMILY

Johnny Morris
Bass Pro Shops
Cabela's

BASSPRO.COM/CAREERS

EQUAL OPPORTUNITY EMPLOYER

GORITEWAY
TRANSPORTATION GROUP

www.goriteway.com

You Can Change a Child's Life by Becoming a School Bus Driver

- Mentor Children of All Ages
- Flexible Work Hours
- Great Hourly Rates, Paid Weekly
- Paid Training Program

To apply, visit us at www.goriteway.com and **Click Join Our Team** to see all of Our opportunities **262-677-3282 Ext. 602**

KW
KELLER WILLIAMS

EHO

BUYING OR SELLING A HOME?

CALL ANITRA POVLIICH
apovlich@kw.com
414-248-2370

JM HEATING + COOLING LLC

262-229-7571

Jmheating911.com

bryant
Heating & Cooling Systems
WHATEVER IT TAKES.

JM Heating and Cooling is a veteran owned business. We offer a 10% discount to all veterans, police and firefighters.

CALL (262) 628-1932

Richfield SERVICE INC.

AUTO AND TRUCK REPAIR

www.RichfieldService.com

GOODYEAR

BF Goodrich **MICHELIN**

~FREE LOANERS~

Habitat for Humanity Germantown ReStore

Shop. Donate. Volunteer.

Washington and Dodge Counties

Habitat for Humanity ReStore

262-255-7470
www.hfhrestore.org

Hours:
Monday-Friday: 9am-6pm
Donations from 9am-5pm
Saturday 9am-4pm
Donations from 9am-3am

W190N10768 Commerce Circle
Germantown, WI 53022



Updates From Around the Village

Northeast Corridor—Sewer and Water Update

On Thursday, January 27th at 6PM, the Richfield Village Board will be joining the Village of Germantown's Village Board as a guest for a listening session at the Germantown High School Performing Arts Center (W180N11501 N River Ln.) for the ongoing discussions our two (2) communities have been having over the last year regarding providing municipal sewer and water to the Village's Northeast Corridor. Village residents are welcomed and encouraged to attend. There will be a presentation by the County's economic development group (EDWC) describing the proposal and the benefits of this potential intergovernmental partnership to each community.

The Northeast Corridor, shown in the graphic to the right, is generally bordered by STH 167 to the south, STH 175 to the west, Pleasant Hill Road to the north, and I-41 to the east. The

Village has been working towards this partnership with the Village of Germantown now for well over a year. We've seen

economic development all throughout the County and southeastern Wisconsin and while Richfield has seen some growth in industrial development, the opportunity exists to see the same types of office and manufacturing development as some of our neighbors to capitalize on the "pro-business" mentality we've been talking about cultivating over the last decade.

Q: I just heard that Germantown experienced an increase for their water rates. Will the residential areas of Richfield have to pay these costs?

No, the cost for installing the infrastructure for both water and sewer would be proposed to be paid for by private development through the use of Tax Incremental Financing. The use of these utilities, by private industry, would be based on Germantown's own utility rates and they would essentially be a customer of Germantown's utilities just like their own taxpayers are.

Q: Why is Germantown water and sewer beneficial to Richfield?

Right now these farm fields generate very little in terms of taxes and assessed value for the Village of Richfield. New, high-value non-residential development will generate tax revenue to offset and reduce the tax burden to our residents over the long-run. From speaking with real estate professionals and people in the economic development industry, this property is truly unique and the reason why it has continued to languish and not be developed according to its highest and best use, is the lack of municipal utilities. This geographic area has also been studied and has a vastly different geological makeup than the majority of the Village of Richfield which has sand and gravel soils. Therefore, you are not going to see the same type of "groundwater recharge" you see throughout the community, so over time you'd likely see negative impacts to surrounding wells based on the type of Office/Light Industrial uses we have shown in our Comprehensive Plans dating back to 2004. The cost of the Village of Richfield starting its own utility is something our Village Board has expressly stated opposition to and since we are talking about a limited geographic area, the return on that type of an investment does not make sound financial sense.

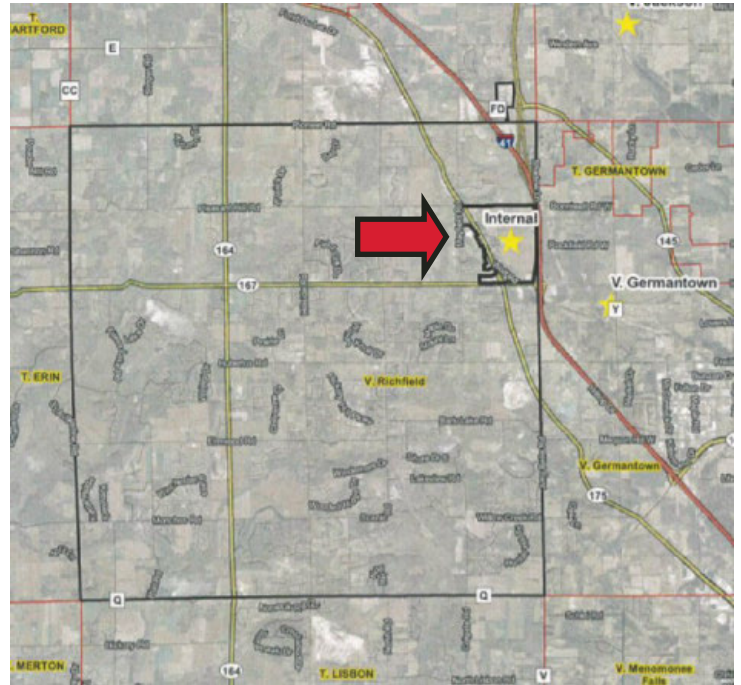
Q: Where exactly are the utilities proposed to come from?

While the Village is still busy working with the Village of Germantown on determining the exact potential route, we've agreed in principle that water would come from their new tower that is currently under construction on Rockfield Road. The sewer lines would originate from Freistadt Road in the Village of Germantown and travel northbound along the right-of-way of the State of Wisconsin's Wisconsin Southern Railroad line. The cost of constructing these lines would be paid for entirely by private development.

Q: Are these utilities ever going to go past the properties directly abutting STH 175 and go west to "residential Richfield"?

In a word, "no". The Village has Ordinances in place that would prohibit the extension of utilities past STH 175 unless a Village-wide referendum were passed. Additionally, water service areas are regulated by the Public Service Commission and this proposal would be for this limited geographic area. The same is true of municipal sewer and being regulated by MMSD.

Jim Healy, Village Administrator



Upcoming Events

DATE	EVENT	TIME	LOCATION
1/19/2022	Park Commission Meeting	6PM	Village Hall
1/20/2022	Village Board Meeting	7PM	Village Hall
1/27/2022	Public Listening Session - Richfield NE Corridor Sewer and Water discussion with Village of Germantown	6PM	Germantown High School Performing Arts Center (W180N11501 N River Ln, Germantown, WI 53022)
2/3/2022	Plan Commission Meeting	7PM	Village Hall
2/5/2022	Transfer Station Open	7AM-1PM	1345 Hillside Road
2/15/2022	Spring Primary (For Germantown and Hartford HS School Board, only)	7AM-8PM	Northbrook Church (4014 STH 167, Richfield, WI 53076)
2/16/2022	Architectural Review Board Meeting (If needed)	6PM	Village Hall
2/17/2022	Village Board Meeting	7PM	Village Hall
2/19/2022	Transfer Station Open	7AM-1PM	1345 Hillside Road
3/3/2022	Plan Commission Meeting	7PM	Village Hall
3/5/2022	Transfer Station Open	7AM-1PM	1345 Hillside Road

2022 Boat Launch Passes Available in March

Annual passes for the Village's two (2) public boat launches are available for purchase at the cost of \$25.00, per pass, starting in March. Applications are available online or can be filled out at Village Hall. Daily passes are also available for \$5.00 at the Friess Lake/Wild Marsh Landing and \$8.00 at the Bark Lake Boat Launch. Daily passes can be purchased directly at the Boat Launch locations with cash and are monitored in partnership with the WSCO and Wisconsin DNR.



Christmas Tree Drop-Off

Village residents may recycle their Christmas trees at any time at the Richfield Transfer Station, located at 1345 Hillside Road, free of charge beginning Tuesday, January 4th and concluding at the end of January. Trees should be dropped off to the side of the Transfer Station yard entrance.



KLING'S
LAWN & LANDSCAPE
"BEAUTIFYING LANDSCAPES"
262-628-7620
• Insured • Free Estimates
LANDSCAPING • HARDSCAPES
www.klingslawnandlandscape.com

HUBERTUS CHIROPRACTIC
Dr. Michelle DeFere
Serving the area for over 30 years
New Patients Welcome
262-628-1960

AVAILABLE FOR A LIMITED TIME!
ADVERTISE HERE NOW!
Contact **Jeff Parkinson** to place an ad today! jparkinson@lpicommunities.com or (800) 950-9952 x5887

Laubenhelmer's Garage
Est. 1921
628-2235
Hours:
Weekdays: 7:00-5:00pm
Saturdays: 8-Noon
Auto & Truck Repair 1860 Hwy 175 Richfield, WI 53076 262-628-2235
Collision Center 3028 State Rd. 167 Richfield, WI 53076 262-628-1500

4 Great Businesses Under One Roof!
1333B State Rd 175, Hubertus • 262-628-4771
www.nutman.com • info@nutman.com
Monday thru Friday 7am-7pm • Saturday 8am-5pm • Sunday 8am-3pm

Java Dancer
COFFEE BAR & CAFÉ
Espresso, Lattes, Cappuccino, Coffee, Smoothies, Bakery, Snacks, Sandwiches, Soup, Salad, and Pizza

The Nutman Company U.S.A., INC.
Hubertus, WI 53633 (262) 628-4771
Over 200 varieties of nuts, chocolates, snack mixes, candy & gourmet foods!

The Really Cool gift shop
262-628-4771 Hubertus, WI
Jewelry, candles, purses, books, chimes, cards, scarves, giftware & more!

Joyful Dance Movement & Jazzercise Classes

We have moved!
Come see us at our new location!

FREE AD DESIGN
WITH PURCHASE OF THIS SPACE
CALL 800.950.9952

THE SAWMILL INN
RESTAURANT & PUB
A PROUD LOCAL TRADITION SINCE 1982
RICHFIELD, WISCONSIN

FREE AD DESIGN
WITH PURCHASE OF THIS SPACE
CALL 800.950.9952

WE'RE HIRING
AD SALES EXECUTIVES
BE YOURSELF. BRING YOUR PASSION.
WORK WITH PURPOSE.

- Paid Training
- Some Travel
- Work-Life Balance
- Full-Time with Benefits
- Serve Your Community

Contact us at careers@4ipi.com
www.4ipi.com/careers

RICHFIELD HAPPENINGS

4128 Hubertus Road
Hubertus, WI 53033

www.richfieldwi.gov

Like Us Facebook



@RichfieldWis



RichfieldWis



Forward. Preserving... A
Country Way of Life!

BULK U.S.
POSTAGE PAID
PERMIT # 8

Postal Customer

Community Roots Program

The Community Roots Program is an opportunity for individuals to donate a tree to be placed in one (1) of three (3) Village parks. Those interested in donating a tree can do so by filling out the form below and returning it to Administrative Services Coordinator Katherine Gehl at the contact information below. Once forms are received, Staff will contact donors to confirm their interest in proceeding. Please note, the next planting season will be in spring of 2022. Applications are accepted year-round.

TREE PLANTING REQUEST

Donor's Name

Address

City, State Zip

Daytime Phone

Email

Please check which applies to the person or organization below:

- Honored
 Memorialized

Name or names to be honored

Send acknowledgment to:

Name

Address

City, State Zip

PREFERRED PARK LOCATION

1st Choice: _____

2nd Choice: _____

Options: Nature Park, Heritage Park, Fireman's Park.

SUGGESTED TREES

1st Choice: _____

2nd Choice: _____

Options: Bur Oak, Red Oak, White Oak, Norway Maple, Red Maple, Sugar Maple, Aspen, Honey Locust, Linden, River Birch, Colorado Blue Spruce, White Pine, White Spruce

PREFERRED PLANTING SEASON

SPRING: (Deadline to apply is March 31st, 2022)

FALL: (Deadline to apply is September 1st, 2022)

For more information please contact:

Katherine Gehl
Administrative Services Coordinator
Village of Richfield
4128 Hubertus Rd.
Hubertus, WI 53033
(262) 628-2260 ext. 113
ASC@richfieldwi.gov

Now Accepting Applications to Village Boards and Commissions

Architectural Review Board

Zoning Board of Appeals

Capital Improvement Plan

Park Commission

Plan Commission

Interested parties should submit an application, resume, and cover letter directed to Village President John Jeffords by mail at 4128 Hubertus Road, Hubertus, WI 53033 or by email at: villagepresident@richfieldwi.gov.

Now Hiring! Part-Time Administrative Assistant

WE'RE
HIRING!

The Village is seeking a service-driven solutions expert to fill its recent vacancy for the position of part-time Administrative Assistant. The hiring range is between \$14.00-\$17.00/hr., DOQ. Besides a competitive hourly wage and job flexibility, those working in the Village of Richfield will receive retirement benefits from the Wisconsin Retirement System, the potential for performance incentives, and accrued personal time per month. Please use the following link to view the full job description or to apply: <http://richfieldwi.gov/jobs.aspx>.