



August 7, 2022  
19th Sunday of Ordinary Time

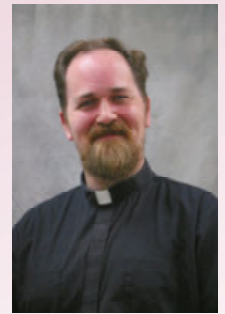
Guardian Angels Mission Statement  
**Engaging in God's Service**

**PARISH INITIATIVES**

- Strive to be an Inclusive Community and Engage Parishioners
- Deepen our Witness to Catholic Social Teaching
- Respond to the Church at a Crossroads
- Improve Communication Awareness

**The Prayer of the Faithful**

After the Creed, during the celebration of the Mass, we enter what the Church calls, "The Prayer of the Faithful." This is known by most Catholics as the part of the Mass where specific prayers are offered and the people respond with, "Lord hear our prayer." This is a wonderful part of the Mass where the laity practice what the Church calls the "Common Priesthood." The common priesthood is shared by all the baptized and gives us the ability to call God Father and offer prayers to Him for ourselves, our neighbors, and the world. To pray unceasingly is one of the great commands of Christ and is our duty to pray always and everywhere. I remember a priest friend of mine told me an experience he had while celebrating Mass, the church he was celebrating the Mass had the practice of opening the prayers of the faithful so that anyone in the congregation could say aloud the prayers they wanted to offer. When the time came for people to offer their prayers, they would talk over each other and interrupt in order that their prayers could be heard. It quickly devolved into chaos and the priest had to put a stop to the practice. While the congregation was enthusiastic, they were misguided in thinking that if their prayers were not said aloud during the Mass that they were somehow lesser prayers. God hears all our prayers whether said aloud or in silence, and every Sunday the Mass is said for the entire community and their intentions. While it is good that our prayers are said aloud after the creed, know that whatever you are praying for in the silence of your hearts, God hears. And in the end the words are less important than the heart that is offering them, as the Psalmist said, "If I had cherished iniquity in my heart, the Lord would not have listened." (Psalm 66:18)



In Christ,  
Fr. Joe Connelly

19<sup>th</sup> SUNDAY IN  
ORDINARY TIME

"Blessed are those servants whom the master finds vigilant on his arrival. Amen, I say to you, he will gird himself, have them recline at table, and proceed to wait on them." - Lk 12:37

## SOCIAL JUSTICE & OUTREACH

### Hope for the Journey Home is Hiring

Yes, the labor market is still tight and so we can use your help to get the word out. Our shelter for families has part-time positions open now, including an administrative assistant with good organizational and computer skills and an afternoon/early evening host to welcome volunteers and assist with a variety of shelter tasks. If you would like to know more about either of these opportunities, please contact Trish at **651-503-3380** or check out the job descriptions on the website.



### It's A Heat Wave

Many of our lawns are a bit crunchy these days and we all need rain! Our Parish Food Shelf Garden also needs extra attention when weather like this settles in. If you can help us tend the veggies with watering or weeding, please consider signing up for a shift on the website. If a day or time outside of those listed would work better for you to come over and do some watering, call the Parish Office.



### 2022 Outreach Grants

This parish has a long history of living out Catholic social teaching in a variety of ways, including our yearly grantmaking effort that reaches out to a wide variety of organizations working for the common good. These grants are only possible because of the generosity of parishioners thank you! This week we focus on Ujaama Place, a mentoring center focused on young Black men at the intersection of race and poverty in St Paul. Want to learn more or get involved?



Find out about this critical work at [ujaamaplace.org](http://ujaamaplace.org).

### Paper Bags Needed

Our neighbors at **Open Cupboard** (formerly known as CCEFS) need paper bags. The next time you unpack from a trip to the grocery store, please consider dropping your paper bags off in the Parish Giving Center (just inside the main entrance). Thank you!



### Last Call for School Supplies!

The deadline for our annual school supply collection is **Tuesday, August 9**. You can bring your **new** school supplies to the table near the main entrance. Check the website for a list of most-needed items. We cannot accept used items for this collection – thanks for your understanding.



As always, if you prefer to make a financial donation you can do that at the Giving Tab on the parish website. Thank you for helping to make going back to school less stressful for families who need a bit of help. If you are reading this and could use some help yourself, please call the Parish Office.

*For more information about anything you read here, or about any of the Justice and Outreach ministries at Guardian Angels, contact Suzanne Bernet at **651-789-3181** or [sbernet@guardian-angels.org](mailto:sbernet@guardian-angels.org).*

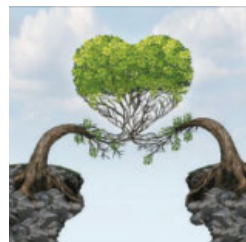
Finding your  
**CALLING**  
DISCIPLESHIP FOR THE LIFE OF THE WORLD

**Finding Your Calling:  
Discipleship for the Life of the World  
Coming to GA on Saturday, September 24**

Our calling is something we do, someone we are and someone we become. How do we listen for the invitation of Jesus and live the fullness of our lives?

Plan to spend a morning of retreat, reflection and conversation with others and with keynoter **Laura Kelly Fanucci**.

Registration information coming soon – you won't want to miss it!



### Love Builds Bridges, Not Walls

We invite you to pray for a person caught in our broken immigration system. Each week, we offer a name of someone detained, deported or waiting for justice.

**Rosa from Nicaragua**

# FALL FAITH FORMATION

GUARDIAN ANGELS  
**GIFT** Growing In  
Faith Together 



## Youth Ministry and Faith Formation

### Faith Formation Registration Open

Faith Formation information for the 2022-2023 year starting in October is available on our website at [www.guardian-angels.org](http://www.guardian-angels.org)

**Early Childhood** for children ages 3, 4, and 5 meets on Sundays at 8:30 a.m. We will be adding **Children's Liturgy of the Word** to the Mass at 8:30 a.m. for children in grades 1-5. Grades 1-8 will continue to meet on Wednesdays, 6:15 - 7:30 p.m. **Confirmation** for grades 9 and up will meet on Sundays 12:15-1:30 p.m. as well as **CONNECT for high school** youth. Family Ministry will continue to meet the second Sunday of each month from 9:40-10:50 a.m.

**We need a variety of adult and high school youth** to help with our Faith Formation programs. You do not need to be an expert in the Catholic Faith to help. We will support you, resource you, and help you grow in faith while serving our community. Please contact the following staff people:

**Deb McMahon** for Early Childhood:  
[dcmahon@guardian-angels.org](mailto:dcmahon@guardian-angels.org)

**Lukas Steffensmeier** for Grades 1-4. First Reconciliation and First Eucharist, Children's Liturgy of the Word, and Family Ministry:  
[lsteffensmeier@guardian-angels.org](mailto:lsteffensmeier@guardian-angels.org)

**Paul Deziel** for Grades 5-8, Confirmation Prep, and High School:  
[pdeziel@guardian-angels.org](mailto:pdeziel@guardian-angels.org)



## Silent Auction is back!

Please continue to bring in donations of new and like new items to room M7. Use donation forms on the cart to share a description, value and if you would like the item back if it doesn't sell. Want to discuss an item? Email us at [silentauction@guardian-angels.org](mailto:silentauction@guardian-angels.org).



We also welcome your gift card donations - Drop off cards (\$10 or more please) to the collection bin on the Big Ticket table, in the collection basket at mass, to the office or mail it with your weekly offering envelope. With the goal for the Festival to make \$20,000 more this year than in the past, we will need your help to increase the auction's part of that total. Please consider signing up to volunteer with us, either ahead of the festival or during festival weekend. Join our team and be part of the magic! We are making good progress with more than 140 items already entered for the auction. With your continued support we will reach more than 700 items by September!



## GA Women's Club

Please join us **Monday evening, August 8**, for our **monthly meeting at 6:30 p.m.** in GA Perks or email us for the zoom link. It looks to be a full agenda with several items to discuss, so we hope you will join us. We are excited to see everyone again!

We'd like to invite Women's Club members to sign up for **Fall Festival volunteer openings**. We are looking for volunteers for our Raffle Tabling, Bottle Lotto, and Bake Sale and we encourage you to consider other areas too using the Festival Sign Up Genius site! It takes all of us to make the festival successful! Email [womensclub@guardian-angels.org](mailto:womensclub@guardian-angels.org) for more information. Please bring in any Bottle Lotto donations through September 10 to the collection area outside the Parish Office. Thank you!

**Please note the change in dates for our August card making ministry sessions: August 15 & August 29 from 10:00 am - 12:30 p.m.** in the Teen Room. All are welcome! Please check out and purchase some of our beautiful handmade cards on display in GA Perks for just \$3 each. There are designs for every occasion you might need.

## ADMINISTRATOR'S CORNER

**Stewardship Message:** Whether you are just beginning your stewardship journey or have been living a stewardship way of life for years, today's readings invite us to ask ourselves an important question to ponder.

The question is this: "What do you treasure?" Of course, we all know the "right" answer: we treasure our faith, our family, and our friendships. But Jesus tells us in the Gospel passage from Luke how we can discover the real answer to this question. He says, "For where your treasure is, there also will your heart be."

To discern what we really treasure, we need to do a check on our hearts. We can each ask ourselves, "Where do I spend the majority of my energy? Where do I find my thoughts dwelling? How do I choose to spend my time when I find myself with a few spare moments? What do my spending habits reveal about my what is important to me?"

As Christian stewards, we are called to live our lives in grateful response to all that God has given us. Do I recognize and treasure these gifts? **The Catholic Steward**

**Fall Festival Update:** The next incentive drawing, **\$250**, will be on Monday, **August 15**, at noon for all those who have sold and turned in all their 25 tickets along with the drawing form that is on the top of the letter in the packet. Please check out the Big Ticket thermometer hanging on the Giving Center each week that shows how we are doing. Through last weekend, we are now even with the average over the past three years. Sales have slowed and remember, we budgeted to sell \$100,000 and we are now at \$33,500.


**Feature Event:** Our traditional Saturday Pasta Dinner and Sunday Chicken Dinner are returning this year. Through the last several years, the Men's and Women's Clubs and dedicated volunteers have been preparing most of the food using recipes from John Schiltz at Lake Elmo Inn. This year, to save some money, the Men's Club kitchen crew are preparing all the food for the first time. You won't see much change and both dinners promise to be very delicious. We encourage everyone to purchase their tickets in advance either in person before or after weekend Masses or in the office during the week beginning on **August 26**. At the same time, you will be able to purchase tickets on the website and then pick them up in the office.

**Thank You:** We thank the **GA Crafters** for their very generous donation of **\$4,000** that covered the cost of new solar blinds for all the windows in M2 through M10 and M13. Every year they donate their net proceeds back to the parish by choosing items on the Angel List. We also thank Tom Specht from our maintenance staff for installing all the blinds.

**Did You Know:** The **Stewardship Commission** changed its name to the **Engagement Commission**. As they were planning for their annual October campaign for 2023, they discussed the importance of engaging new and old parishioners through time and talent opportunities. The word "stewardship" connotes financial donations to most parishioners. Even though there was a drop in pledges for 2022, the commission feels we need to spend more energy on the time and talent portion of our 2023 campaign than to concentrate on asking parishioners to increase their pledges. We have so many diverse ministries and activities for people to engage in, we just need to make them aware of the opportunities. Check out the upcoming August Angel News for more information.

**Help Wanted:** We have advertised on our website, our Facebook page, in the bulletin and on the Archdiocesan website that we have four open positions: three for Hope for the Journey Home and the other is a part-time custodial position. For the custodial position the applicant must be at least 18. Please check out the descriptions on one of these sources and help us find some candidates. Thank you!

**Election:** Once again, Guardian Angels will be a polling place for the **August 9 Primary Election**. The election officials will set up on Monday afternoon and the polls will be open from 7:00 AM until 8:00 PM on Tuesday. Unless you are coming to vote, please try to stay clear of the lower level and know that there will be extra traffic in the parking lot.

Keep Smiling,  
Denny 

**PS:** In today's Gospel reading, Jesus concludes his teaching about those who are "faithful and prudent stewards" with that classic stewardship teaching: "Much will be required of the person entrusted with much, and still more will be demanded of the person entrusted with more." Christian stewards recognize that God is the ultimate source of their gifts, talents, resources and aptitudes, and that God wants them to use these varied gifts in his service. This week might be a good time to reflect on our God-given gifts. Are we using those gifts to serve the Lord? If Christ came back to us unexpectedly tomorrow, would we be able to give a full accounting of how we have exercised stewardship over these gifts?

**Thought of the Week:** Stewardship involves giving, but not with the motive of getting more from God. The true steward gives out of gratitude. Supporting motives are a loving concern for others and the desire to share in God's purpose and plan. Proportionate giving suggests we prayerfully pause and review our blessing and then determine what our level of generosity should be. Proportionate giving attempts to reason with every parishioner in an effort to set aside a portion, any portion, but a specific share to be returned to the Lord and placed in the service of the people.

## FINANCIAL CORNER

### July 31, 2022 (5 Weeks) Stewardship Giving

#### Stewardship Giving

<b>Envelopes</b>	<b>Year to Date</b>
<b>Budget</b>	<b>\$ 133,650</b>
<b>Actual</b>	<b>\$ <u>152,050</u></b>
<b>Difference</b>	<b>\$ 18,400</b>

#### Regular Plate Collection

(Excludes Outreach Sunday Collections)

<b>Plate</b>	<b>Year to Date</b>
<b>Budget</b>	<b>\$ 2,600</b>
<b>Actual</b>	<b>\$ <u>2,375</u></b>
<b>Difference(\$</b>	<b>225)</b>

**Loose Plate  
Collection - Sister  
Parish/Teustepe**

**\$4,088.57  
Thank You**

## CARING & SUPPORT MINISTRY



### PASTORAL PEARLS

Each of us is called by our Baptism to BE the Love of God to those around us – anyone we encounter. And since those around us will at times have a need for more tender care, I thought I would pass on some brief, concise “Pearls” or “Tools” to help us be that Love of God.



**BEFRIENDER**  
MINISTRY  
*A Listening Presence*

**Today's Pearl:** A **BeFriender** is a powerful tool for healing. A BeFriender can help you to see your own “Light” again – the light of Christ guiding you, within you. A BeFriender can be a companion to walk with you through any temporary “darkness” in your life – or fog or confusion or struggle. A BeFriender sees YOU in all your beautiful strength, and can help you to see yourself again. BeFrienders do NOT Fix or rescue, but help you to see your own inherent, God-given power. Consider allowing a BeFriender to walk with you toward healing whatever temporary need you may be trying to work through. Please contact MaryPat Potts to inquire.

And if you see yourself in this description of a BeFriender, **please consider becoming trained as a BeFriender** to walk with others during a time of need. Contact MaryPat Potts to chat about what it takes and what it might mean for you to be a BeFriender. We are looking to train interested candidates this coming Fall. We would like to develop a pool of BeFrienders who would have their monthly meeting in the evening, so this is a good opportunity even for those who work during the day. **mpotts@guardian-angels.org** or **651-789-3178**

*Loving God,  
I am so grateful that you have placed within me the strength,  
tools and guidance I need for any struggle that comes my way.  
Help me to know that I do not have to walk through my struggles alone –  
no matter how temporary they may be.  
May your Holy Spirit humble me to accept help and healing where it is offered,  
so that I do my part to shine your love in this world.  
And may I recognize your call,  
if you are calling me to be that compassionate companion for another.  
~ Amen*

*Healing Hearts*  
GRIEF SUPPORT GROUP

### Healing Hearts Grief Support Group

Meets for 8 weeks on  
**Mondays, 12:30 – 2:00 p.m.**

You can still get in on this new series.  
If you are someone who still is struggling or feeling off-balance since the death of a loved one, or are experiencing any kind of great loss, please consider trying this out. We will meet **in-person**, but also offer a Zoom option. All are welcome.

Contact MaryPat Potts for more info via email at **mpotts@guardian-angels.org** or call **651-789-3178**

*For more information about anything you read here,  
or about any of the Caring & Support ministries  
at Guardian Angels, contact MaryPat Potts at  
**651-789-3178** or **mpotts@guardian-angels.org**.*



## PRAYER & REFLECTION

### Readings for the week of August 7, 2022

**Sunday:** Wis 18:6-9/Ps 33:1, 12, 18-19, 20-22 [12b]/Heb 11:1-2, 8-19 or 11:1-2, 8-12/ Lk 12:32-48 or 12:35-40

**Monday:** Ez 1:2-5, 24-28c/Ps 148:1-2, 11-12, 13, 14/Mt 17:22-27

**Tuesday:** Ez 2:8-3:4/Ps 119:14, 24, 72, 103, 111, 131/Mt 18:1-5, 10, 12-14

**Wednesday:** 2 Cor 9:6-10/Ps 112:1-2, 5-6, 7-8, 9/Jn 12:24-26



**Thursday:** Ez 12:1-12/Ps 78:56-57, 58-59, 61-62/Mt 18:21-19:1

**Friday:** Ez 16:1-15, 60, 63 or 16:59-63/Is 12:2-3, 4bcd, 5-6/Mt 19:3-12

**Saturday:** Ez 18:1-10, 13b, 30-32/Ps 51:12-13, 14-15, 18-19/Mt 19:13-15

## STAFF CONTACTS

Email: 1st name initial + last name@guardian-angels.org  
All Phone Numbers Area Code 651

### Parish Team

#### Administration

Fr. Joe Connelly, Pastor 789-3188  
Denny Farrell, Parish Administrator 789-3169

#### Faith Formation

Paul Deziel 789-3173  
Deborah McMahon 789-3174  
Lukas Steffensmeier 789-3162

#### Liturgy/Music

Zack Stachowski 789-3187  
Deacon Mick Humbert 366-0758

#### Maintenance

Jason Kustritz 789-3186  
Tom Specht 789-3186

#### Office

Cindy Sutton 789-3165  
Heidi Tousignant 789-3168  
Carla McGough 789-3167  
Sharon Schwarz 789-3182  
Michelle Fox 789-3190

#### Pastoral Care

MaryPat Potts 789-3178

#### Justice/Outreach

Suzanne Belongia Bernet 789-3181

#### Hope for the Journey Home

Trish Brokman 503-3380

#### Parish Finance Council

Marc Cove, Chair 770-6475  
Jeanine Kuwik, Vice-Chair 491-8855

#### Parish Pastoral Council

Teri Asiala, Interim Chair 612-396-3770

#### Trustees

Greg Larson, Treasurer 612-670-4151  
Sue Pitts, Secretary 739-3911

## PRAYERS REQUESTED

*We pray for all in our community who need our loving support.*

Lauren Fleck	Dolores Mallet	Amara Strande
Amy Lippert Hoffman	Ursula Palesh	Robert Tatreau
Kathleen Jensen	Di Roszell	Walt Welna
Sharon Johnson	Catherine Scoles	Jamie Roux
Teresa Johnson	Pat Sherrill	
Jodi Landry	Frank Steel	
Caroline Larsen	Carol Stewart	

Please submit names for prayer requests to MaryPat Potts at 651-789-3178 or mpotts@guardian-angels.org

### Find us on

www.facebook.com/GuardianAngelsOakdale  
Twitter.com/GuardianAngelsC



### Office Information

8260 Fourth Street North  
Oakdale, MN 55128

Phone..... 651-738-2223

Fax ..... 651-738-2453

www.guardian-angels.org

### Parish Business Office Hours

Monday - Friday: 8:00 a.m. - 4:30 p.m.  
Saturday & Sunday: Closed

### Parish Center Hours

**Building is open 8:00 a.m. - 4:30 p.m. Mon - Friday**

If you have a Pastoral emergency after hours, please call the Parish Office at 651-738-2223.

### Liturgies

**Mass Saturdays at 4:30 p.m. (also livestream) with ASL**

The livestream will be available online after 5:30 p.m.

**Mass Sundays 8:30 a.m. & 11:00 a.m.**

### Adoration Chapel/Historic Church

**Wednesdays 9:00 a.m. - 12:00 p.m.**

### Reconciliation Saturdays, 3:30 p.m.

**Please call the Parish Office regarding these Sacraments:**

\* RCIA, Baptism, Eucharist, Confirmation \* Marriage  
\* Anointing of the Sick \* Communion for the Homebound

## MASS INTENTIONS

### Tuesday

8:30 a.m.

### August 9

†Dick Smith

### Wednesday

8:30 a.m.

### August 10

†John Ruffing

12:00 p.m.

†Gruber & Nielson Family's

### Thursday

8:30 a.m.

### August 11

†Stanley Ciolkosz

### Friday

8:30 a.m.

### August 12

†Ed Pierre

## Santa Shop

The Santa Shop is collecting items for the children to purchase as Christmas gifts for their family & friends. It sounds early but it takes a lot of collecting, sorting & pricing to have a large inventory from which the children to choose. Suggestions: have you received prizes or gift you cannot use? We are always in need of gifts for men, i.e. small tools, sports items, things for their desk, for women, knickknacks, lotions, anything for the kitchen, for children, toys of any kind. All items can be left in the Giving Center, located to the left as you enter the church. Please mark "Santa Shop" on your donations.



Thank you, Karen Bollmann, 651-735-2421



The **Crafters** are busy making plans for the Fall Festival. The **Quilt Raffle** will be starting soon. You will not want to miss purchasing tickets for a chance to win

this beautiful quilt! Like last year, the Crafters will be selling plants, canned goods and fresh produce in M6. Now is the time to split your houseplants and start growing new plants. As you are canning your favorite jams, set aside a few to donate to the Fall Festival! And don't forget we gladly accept your craft items. The Crafters always appreciate all donations.



## Fall Festival's Bottle Lotto Game Goodies Needed

The Women's Club will be having our crowd-pleasing Bottle Lotto this year! It is especially popular with the younger crowd ages 5 to 15! The younger kids love to get wrapped candy, coins or other treats, small stuffed animals (think beany babies). The teens like shampoo, nail polish, silly socks, any beauty, and hair accessories. Use your "bottled up" creativity to come up with your own mix of fun things! You can also drop off a bag of wrapped candy (no loose M&M's please) and let the Women's Club members put together bottles for you!

We will be accepting only **new** items for Bottle Lotto. Donations can be dropped off August 1st through Sept 10th at the Bottle Lotto drop off location outside the Parish Office.



**LAKE ELMO BANK**  
A TRADITION OF SERVICE

651.777.8365  
lakeelmobank.com

Stillwater • Lake Elmo • Oakdale  
Member FDIC

**PLATINUM BANK**

PROVIDING A MEANS TO A DREAM.

PlatinumBankMN.com  
651.332.5200

**Counseling Care**  
GUIDING YOU TO HOPE & HEALING

Lake Elmo  
(651) 379-0444  
www.counselingcare.us

**RE/MAX Results**  
Mara Mayberry  
Realtor®

Mara.mayberry@results.net  
Mara.mayberry.results.net  
**651-343-0216**

**OAKDALE RENTAL**

Professional **TOOLS**  
Professional **RESULTS**

**651-777-4825**  
oakdalerental.com

**STENSETH, SAMUELSON & BOESE, LTD**  
CPAs AND CONSULTANTS  
INDIVIDUAL & BUSINESS TAX SERVICES  
ALL STATES TAX PREPARATION

563 Bielenberg Dr., Ste. 205  
651-739-1000 • 651-739-0018 (Fax)

Office Hours  
Mon-Fri  
(8:30am-4:30pm)  
7545 Commerce Street,  
Corcoran, MN 55340  
Direct: 763.400.7211  
Office: 763.420.4073  
www.concrete-science.com

# SUPPORT OUR ADVERTISERS!

651-200-4747

**Eagle Valley DENTAL**

Excellent family care in a welcoming and friendly environment!

Dr. Jerry Lee www.eaglevalleydental.com

**O'Halloran & Murphy**  
FUNERAL AND CREMATION SERVICES

Our family serving yours, always providing compassionate & professional service with affordable options

Michael O'Halloran, Owner  
(651) 702-0301 • www.ohalloranmurphy.com

**Oak Meadows**

8131 4th St N, Oakdale, MN 55128  
(651) 578-0676  
www.oak-meadows.org

**John A Dalsin & Son, Inc**  
Commercial Roofing & Sheet Metal Since 1912

612-729-9334  
inquiries@dalsin.com  
Built-Up, Single-Ply & Sheet  
Metal Roofing, Green  
Roofs, Leaks, Repairs  
& Maintenance

**Furlong's Liquor**

Terry Furlong Dan Furlong  
Parishioners  
Voted Best Liquor Store  
Best Wine Selection  
Best Service Past 21 Years  
Party Planning & delivery

Open Late Night 8-10pm Monday - Saturday  
www.FurlongsLiquor.com  
Hwy 36 & Century • 779-7757



**NOW LEASING!**

**Vibrant. Thriving. Unique.**  
Just like your loved one.

**THE WATERS**  
OF OAKDALE™

SENIOR LIVING | ASSISTED LIVING | MEMORY CARE

Call to Schedule Your Tour! 651-393-5260

TheWaters.com

**DUSSIK**  
— REAL ESTATE GROUP —

Top producer - over 22 years of experience!  
MN/WI Licensed Realtor \* Helping All Buyers & Sellers  
Please call me for a complimentary market analysis today!  
(612) 382-8383 • www.LynnDussik.com

**Lynn Dussik**

**HK**  
HENSELER & KOCIAN  
ORTHODONTICS

Dr. Steven Henseler • Dr. Paul Kocian  
1000 Radio Dr, Ste #220 • Woodbury • (651) 739-1555  
2850 Curve Crest Blvd #230 • Stillwater • (651) 439-8909  
www.hkortho.com

**KW** PREMIER  
REALTY  
KELLERWILLIAMS.

**EBERHARD**  
GROUP  
REAL ESTATE SOLUTIONS

**Larry Eberhard**

Real Estate Counselor • Active Parishioner

Selling in the East Metro Area.  
Over 30 years experience!

**651-702-4000**

[larry@eberhardgroup.com](mailto:larry@eberhardgroup.com)

**DITTRICH LAW FIRM P.A.**  
GREGORY D. DITTRICH  
Family Law & Wills



**651-730-6223**  
[www.dittrichlawoffice.com](http://www.dittrichlawoffice.com)  
Conveniently located at  
1-94 & Radio Dr.  
Free 1/2 Hr. Initial Consultation

**TRANSFIGURATION**  
CATHOLIC SCHOOL

**Come for a tour!**  
PreK-8th Grade

**651-501-2220**  
[tigers@transfigurationmn.org](mailto:tigers@transfigurationmn.org)

**WULFF**  
**WOODBURY**

Funeral Home

Funeral Services  
Cremation Services  
Advance Planning

**651-738-9615**

2195 Woodlane Drive, Woodbury



**S&R**  
HEATING • COOLING

**Rob Langer**

**\$100.00 OFF**

Installation of Furnace  
or Air Conditioner  
-OR-

**\$250.00 OFF** for  
Installation of BOTH

WORK PERFORMED

PRESENT COUPON AT TIME OF SERVICE ORDER.  
NOT VALID WITH ANY OTHER OFFER OR DISCOUNT.

SALES • SERVICE • INSTALLATION

**651-429-0001**

[www.srheatingcooling.com](http://www.srheatingcooling.com)

"World Class Dining. Close to Home"  
**LAKE ELMO**  
*Ma*  
RESTAURANT | EVENT CENTER | CATERING  
[www.lakeelmo.com](http://www.lakeelmo.com) | 651.773.4995

**Options | EAST**  
A PREGNANCY MEDICAL CLINIC

**651-776-2328**

891 White Bear Ave • St. Paul  
[www.optionsforwomeneast.com](http://www.optionsforwomeneast.com)

**First Student**



**NOW HIRING**  
SCHOOL BUS DRIVERS!

Apply Online at:  
[WorkatFirst.com](http://WorkatFirst.com)

**State Farm**



**Geri Martin Ins Agency Inc**

Geri Martin, Agent  
1520 Woodlane Dr. • Woodbury, MN  
Bus: 651-739-3604 • [geri@gerimartin.com](mailto:geri@gerimartin.com)  
Providing Excellent Service since 1986  
State Farm, Bloomington, IL



i'm lovin' it™

1759 Weir Drive  
Woodbury

433 Commerce Dr.  
Woodbury



Formation steeped in faith,  
virtue, and hands-on learning.

*Apply Now*

**PRESCHOOL - GRADE 8**

Contact [admissions@stccs.com](mailto:admissions@stccs.com)

or 651.439.5581 x232 to set up a tour.

STILLWATER, MN | [STCROIXCATHOLICSSCHOOL.ORG](http://STCROIXCATHOLICSSCHOOL.ORG)

Place Your Ad Here and  
Support our Parish!

Instantly create and  
purchase an ad with

AD  
CREATOR  
STUDIO



[4lpi.com/adcreator](http://4lpi.com/adcreator)



EXPERTS IN  
END-TO-END  
BUILDING  
SYSTEMS



HARRIS HARRISCOMPANY.COM

GROW YOUR BUSINESS  
BY PLACING AN AD HERE!

Contact Chris Duncan to place an ad today!  
[cduncan@4LPi.com](mailto:cduncan@4LPi.com) or (800) 950-9952 x2543



**Hiring PT Minivan Drivers**

**TREASURED**  
TRANSPORTATION

**Call Now!**  
**612-500-6886**



For ad info. call 1-800-950-9952 • [www.4lpi.com](http://www.4lpi.com)

Guardian Angels, Oakdale, MN

A 4C 02-0133