



*Seek the well-being of the city to which I have sent you. Pray for it to the Lord.  
For in seeking its well-being, you shall find your own. Jeremiah 29:7*

**EPIPHANY OF OUR LORD**  
JANUARY 8, 2023

**MASS SCHEDULE**  
SATURDAY  
5:00PM

SUNDAY  
7:30AM, 9:30\*, 11:30 & 5:00PM  
\*ASL Interpreted & Livestream

**WEEKDAY MASS**  
7:00AM & NOON\*  
\*Livestream

**LEAFLET**  
Please find the leaflet on page 7.  
Scan the code for the expanded  
version online.



88 N 17th St  
Minneapolis, MN 55403  
612.333.1381  
mary.org



## A PRIVILEGED MOMENT

The World Day of Peace is an annual celebration by the Catholic Church dedicated to universal peace, held on January 1. Established by Pope Paul VI in 1967, this special day is an occasion on which Popes share timely declarations, shining light on important facets of our collective lives.

Pope Francis continues this tradition by offering his message for the 56<sup>th</sup> World Day of Peace: No One Can be Saved Alone: Combatting Covid-19 together, embarking together on paths of peace.

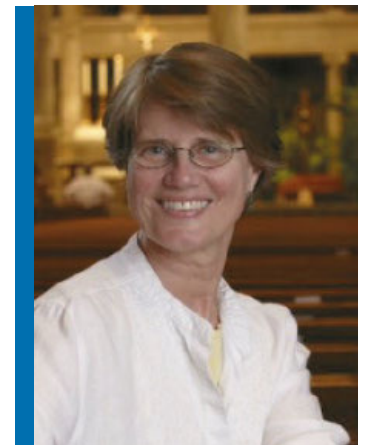
In this short yet provocative message, Pope Francis cuts to the heart of the underlying realities of our day. He states: "Covid-19 plunged us into a dark night." He articulates the challenges faced at every level including healthcare and political systems, economic and social order, individuals and families, as we maneuver through Covid, social unrest, and escalating global war.

True to a life grounded in the steadfast love of God and committed to remaining alert and connected to the suffering of the world, Pope Francis startles us by calling today "a **privileged moment**." He states, "we never emerge the same from times of crisis: we emerge either better or worse." He encourages us: Today is the right time "to question, learn, grown and allow ourselves to be transformed as individuals and as communities."

Pope Francis suggests "the greatest lesson we learned from Covid-19 was the realization that we all need one another. That our greatest and yet most fragile treasure is our shared humanity as brothers and sisters, children of God. And that none of us can be saved alone."

Given this, he asks, "What then is being asked of us?" Faced with continual and evolving disaster, pain, injustice, what are we called to do?

**Embrace reality and be changed by it:** Pope Francis suggests we must be vulnerable and allow "our hearts be changed by our experience of the crisis, to let God, at this time in history, transform our customary criteria for viewing the world around us."



**Janice Andersen**  
*Director of Christian Life  
The Basilica of Saint Mary*

*Continued...*

## STRATEGIC AREAS OF FOCUS

The Basilica of Saint Mary is committed to the future growth of our parish. The *Our Parish Our Future* plan outlines the three strategic areas of focus for the next five years. This plan builds upon the parish's strong vision, mission, and values.

### The Arts

Move, inspire, and transform individuals and communities through excellence in the arts and creative practices.

### Inclusivity

Build a culture where people feel valued, welcome, integrated, and included.

### Homelessness

Respond to the needs of people experiencing or at risk of homelessness. These three areas of focus were strategically selected through a comprehensive, contemplative process with our parish leadership, staff, and consultants.

The three areas will unify and inspire collaboration across our parish and resonate throughout our commitment to the community.

Learn more about the strategic direction of our parish at [mary.org/ourfuture](https://mary.org/ourfuture).

## GREEK ISLES CRUISE WITH FR. JOSEPH GILLESPIE

SEPTEMBER 12-24, 2023

Follow in the footsteps of Saint Paul through Athens, Corinth, Thessaloniki and Ephesus. Enjoy 4 nights in Athens and 7 nights on a Celebrity Cruise through the Greek isles. Visit ancient temples and idyllic seaside villages with six ports of call including Mykonos, Kusadasi, Rhodes, Santorini and Hydra. Enjoy the best of both worlds—private group tours and free time in both Athens and on the cruise. Register at

[magitravelinc.com](https://magitravelinc.com).

Contact Magi Travel at 952.949.0065 or [info@magitravelinc.com](mailto:info@magitravelinc.com).

*Continued from page 1*

**Embrace the common good:** He states, “we must think in terms of the common good, recognizing that we belong to a greater community... We cannot continue to focus simply on preserving ourselves; rather the time has come for all of us to endeavor to heal our society and our planet, to lay the foundations for a more just and peaceful world, and to commit ourselves seriously to pursuing a good that is truly common.”

**Embrace the interconnectedness of all:** “We cannot ignore one fundamental fact, namely that the many moral, social, political and economic crisis we are experiencing are all interconnected, and what we see as isolated problems are actually causes and effects of one another. Consequently, we are called to confront the challenges of our world in a spirit of responsibility and compassion.” Health care, poverty, climate change, immigration: “Only by responding generously to these situations, with an altruism inspired by God’s infinite and merciful love, will we be able to build a new world and contribute to the extension of his kingdom, which is the kingdom of love, justice and peace.”

Together, let us commit our lives to act in this privileged moment for peace.

## MISSION COLLECTION

JANUARY 14-15

### CATHOLIC MISSIONERS IN THE HEART OF AMERICA

Father Francois Pellissier of the Glenmary Home Missioners will speak at our Masses on January 14-15 sharing about Glenmary’s missionary efforts, which focus on serving the spiritual and material needs of people right here in the United States!

Hundreds of counties in the United States do not have a Catholic church or resident priest. This means no celebration of the Eucharist, no sacraments, or a parish community in which to find fellowship and support. Glenmary Home Missioners is working hard to fill that void—to bring the love of Jesus and His Church to the small towns and rural areas of our nation.

This is a wonderful opportunity for us to learn more about Glenmary’s missionary outreach in Appalachia and the rural South. We invite you to share your prayers and financial support for this important ministry. Thank you for your generosity.

Learn more at [glenmary.org](https://glenmary.org).

### PARISH LISTENING SESSIONS

Join an upcoming listening session with Fr. Daniel Griffith. Share your voice and help shape the future of our parish. Please register for one session at [mary.org](https://mary.org).

- Sunday, January 29, 2023, 1:00pm, following 11:30am Mass
- Tuesday, January 31, 5:30-7:00pm – Zoom Session
- Saturday, February 11, 9:00-10:30am
- Sunday, February 12, 11:00am, following 9:30am Mass

# VOLUNTEER

## JOIN THE FUN

While helping others at St. Vincent de Paul Outreach ministry. Volunteering at SVdP Outreach is a weekly commitment on either Tuesday or Thursday morning. Ministry is held in the lower level of The Basilica in the Teresa of Calcutta Hall. Contact Julia, Outreach Coordinator, at 612.317.3413 or [jfreeman@mary.org](mailto:jfreeman@mary.org) to schedule a visit. No obligation to join the ministry—just come and see what we do!

## CANDLE MINISTRY

Volunteers are needed to help replace candles in the shrines located throughout the church. This is a great ministry especially if you attend daily Mass and have an hour to spare before or after Mass. If you are interested, contact Mark at [coordinatorliturgy@mary.org](mailto:coordinatorliturgy@mary.org) or call 612.317.3410.

## AIM: ACCESS AND INCLUSION MINISTRY

AIM is looking for people with lived experiences with a barrier blocking or impeding worship, service, learning, or community life who will work with us to continue to educate our community.

## EMMAUS LISTENING

Emmaus Listening Ministers are highly trained with active listening skills.

## FUNERAL HOSPITALITY

Be on a call list to help with set up, providing hospitality by serving food/ beverages to funeral guests, and then cleaning up afterward. No cooking required, weekday availability is helpful.

Visit the list of current volunteer opportunities at [mary.org/volunteer](http://mary.org/volunteer).

# LITURGY & SACRED ARTS

## EVENING PRAYER FOR THE SOLEMNITY OF EPIPHANY OF OUR LORD

SUNDAY, JANUARY 8, 3:00PM, BASILICA \*

The Basilica Schola Cantorum and Cathedral Choristers

## MASS ON THE REV. DR. MARTIN LUTHER KING JR. HOLIDAY

MONDAY, JANUARY 16, 7:00AM

SAINT JOSEPH CHAPEL

Eucharist will be celebrated at 7:00am in the Saint Joseph Chapel. There will be no Noon Mass. Basilica Campus and Offices are closed.

## PROCLAIMING THE WORD OF GOD: LECTOR MINISTRY

If you are interested in auditioning for the Lector Ministry, please contact Melissa, Director of Volunteer Engagement, at 612.317.3417 or [mstreit@mary.org](mailto:mstreit@mary.org).

## ALTAR GUILD

If you are interested in helping maintain the environment of our beautiful Basilica, one way to help is by becoming a member of our Altar Guild. Work individually or as a team. Contact Tomy at [tvettukallel@mary.org](mailto:tvettukallel@mary.org) or call Mark at 612.317.3410 for more information and sign-up.

## LITURGICAL MINISTRY DAY OF RECOLLECTION

### ORA ET LABORA

SATURDAY, FEBRUARY 11, 11:30AM-4:30PM

BASILICA & TERESA OF CALCUTTA HALL

Our day of recollection begins at 11:30am in The Basilica church with prayer followed by lunch and presentations in the Teresa of Calcutta Hall and concludes with the 5:00pm Mass. Register online at [mary.org](http://mary.org).

## PRESIDENTS' DAY

MONDAY, FEBRUARY 20, SAINT JOSEPH CHAPEL

Eucharist at 7:00am

There is no Noon Mass. Basilica campus is closed.

## ASH WEDNESDAY

WEDNESDAY, FEBRUARY 22, BASILICA

Eucharist at 7:00am, Noon\*, 5:30pm\*

## ARCHBISHOP HEBDA: THE SYNOD PASTORAL LETTER

After three years of listening, preparation and engagement with laity, consecrated women and men, and clergy across the archdiocese, Archbishop Hebda released his pastoral letter. This pastoral letter outlines his vision and Synod Priorities for our local church, informed through feedback from the Synod process. Read the letter now at [archspm.org/synodletter](http://archspm.org/synodletter).

\*LIVESTREAMED

# ART EXHIBIT

## PEACE ON EARTH:

## CRÈCHES FROM AROUND THE WORLD

DECEMBER 1-JANUARY 15

On Display in the Pope John XXIII Gallery & Teresa of Calcutta Hall and Basilica Nave & Choir Stalls.



# BASILICA YOUNG ADULTS

## BYA BIBLE STUDY

THURSDAYS, 6:45PM  
ST. JOSEPH CHAPEL

We will look at the upcoming Sunday Mass readings. Plan to join us if you can. For more information, please contact Ben at [bcaduff@mary.org](mailto:bcaduff@mary.org).

## BYA MASS AND BRUNCH

SUNDAY, JANUARY 22, 9:30AM MASS  
BRUNCH IN RECTORY DINING ROOM

Young adults are welcome to come to the 9:30am Mass, and then join in our rectory dining room for a FREE brunch! It's a great way to get a bite to eat and meet others in the community. Email Ben at [bcaduff@mary.org](mailto:bcaduff@mary.org) to register.

Please visit [mary.org/bya](http://mary.org/bya) for more information on other upcoming winter events for young adults at The Basilica!

## BAPTISM

### ZOOM: BAPTISM CLASSES

WEDNESDAY, JANUARY 25  
6:30-8:30PM, ZOOM

Baptism preparation for parents of infants and children under six: If you are expecting a baby, or in the process of adopting a child, please plan to attend one of our baptism preparation classes. Classes are offered frequently and encourage a better understanding of the sacrament, challenge parents to consider their own faith, and discuss how to pass the faith on to their children. Those planning on having their child baptized at

The Basilica of Saint Mary must be registered members of the parish. Godparents are welcome to attend the class, too. More information, a schedule of dates and times, and registration is online at [mary.org](http://mary.org). For more information, contact Christine at [cmoore@mary.org](mailto:cmoore@mary.org) or 612.317.3439.

## LEARNING

## ADULT PROGRAMS

### SMALL FAITH COMMUNITIES

#### THE HILDEGARD OF BINGEN PILGRIMAGE BOOK

MONDAYS, 9:00-10:00AM (STARTING JANUARY 9)  
ZOOM

*The Hildegard of Bingen Pilgrimage Book* invites pilgrims from all over the world to walk along the historic sites where the saint lived in the twelfth century, offering short descriptions of each of the ten stages. Registration is online at [mary.org](http://mary.org), including a link for you to purchase the book. For more information, contact Doris at [dortiz@mary.org](mailto:dortiz@mary.org) or 612.317.3473.

### MONDAY MORNING GOSPEL GROUP

MONDAYS, 10:30AM-NOON  
WAGNER ROOM, COWLEY CENTER

Email Ben at [bcaduff@mary.org](mailto:bcaduff@mary.org) for Zoom information if you would like to join the group virtually. Otherwise, join in person when you can. For the beginning of 2023, the group will be looking at the upcoming Sunday Mass readings.

## RCIA

### INTERESTED IN LEARNING MORE ABOUT BECOMING CATHOLIC?

Would you like to know more about becoming a baptized Christian? Do you want to make your First Holy Communion or be Confirmed in the Catholic Church? Our church opens its arms to all seekers with the wisdom and rituals of RCIA. We have cohorts meeting at times throughout the week. No need to wait until fall to join! Interested learning more? Contact Christine at [cmoore@mary.org](mailto:cmoore@mary.org) or 612.317.3439.

## FAMILIES WITH CHILDREN

### BASILICA YES WINTER ITEM COLLECTION: SHARE THE WARMTH!

Our Basilica YES group is collecting items for our St. Vincent de Paul ministry. Let us help those in our community stay warm this winter by donating the following new items: hats, scarves, mittens, and socks. Wrapped bins will be near the church entrance from Saturday, December 17 to January 31. For questions, please contact Doris at [dortiz@mary.org](mailto:dortiz@mary.org) or 612.317.3473.

## A FINAL CHRISTMAS REFLECTION

The Work of Christmas Begins

When the carols have been stilled, When the star-topped tree is taken down,  
When family and friends are gone home, When we are back to our schedules  
The work of Christmas begins:

To welcome the refugee, To heal a broken planet,  
To feed the hungry, To build bridges of trust, not walls of fear,  
To share our gifts, To seek justice and peace for all people,  
To bring Christ's light to the world.

by Michael Dougherty, a variation on Howard Thurman's  
*When the Song of the Angels is Stilled*

## PRISONERS OR PATIENTS: SMARTER WAYS TO ADDRESS MENTAL ILLNESS AND PUBLIC SAFETY

SATURDAY, JANUARY 28, 1:00-3:00PM  
TERESA OF CALCUTTA HALL

Using the documentary film *Definition of Insanity*, leaders in the Twin Cities will discuss the Miami Dade model it demonstrates, what is happening in the Twin Cities, and what more needs to be done to work toward positive outcomes, improve public safety, and cut the cost of incarceration for people with mental health issues.

Panelists include Ramsey County Attorney John Choi, Bloomington Chief of Police Booker T. Hodges, Mental Health/Veterans Court Judge Lisa Janzen, Mental Health Court Coordinator Lori Swenson, and NAMI Executive Director Sue Abderholden. All registrants will receive a link to the film *Definition of Insanity* to view prior to the program. Local Organizations will have informational tables at 12:30pm. Registration requested at [mary.org/smarterways](http://mary.org/smarterways). For more information contact Janet at [jgrove@mary.org](mailto:jgrove@mary.org) or 612.317.3508.

## A YEAR OF MINDFUL ACTIVITIES TO CULTIVATE AND STRENGTHEN OUR MENTAL HEALTH

### FEBRUARY: FOCUS ON MOVIES THAT BRING US JOY

SATURDAYS IN FEBRUARY, 2:00PM, AMBROSE/TERESA ROOM

- **February 4:** *The Palm Beach Story* (1942) – A screwball comedy of the 1940's that brings an excellent dose of cinematic cheer!
- **February 11:** *Sense and Sensibility* (1995) – A Jane Austen classic filled with love and benevolence!
- **February 18:** *Paddington 2* (2017) – A family outing full of kindness and generosity!
- **February 25:** *Miracle* (2004) – How better to end the series with a mainly Minnesota triumph-of-the-underdog sports movie about the hockey players who won Olympic gold.

Doors will open ½ hour prior for seating and movie theater treats. No charge for the event. Register [mary.org/mentalhealth](http://mary.org/mentalhealth). Questions? Contact Janet at [jgrove@mary.org](mailto:jgrove@mary.org)

### FEBRUARY WILL BE FANTASTIC...

Valentine's Day, President's Day, the SuperBowl...AND THE SHOE DRIVE AT THE BASILICA! We will be collecting gently used shoes for the local organization Good in the Hood and their Shoe Away Hunger Program. Look for the collection boxes in the narthex and in the Teresa of Calcutta Hall.

### BASILICA CARES FOR CREATION

The Basilica is committed to finding ways to translate our faith into action that respects and protects all creation. Over the years we have had inspiring parishioner leadership challenging us, teaching us, and guiding us as we learn about and address issues of sustainability and ecological stewardship. Today, we are hearing a call to revitalize and recommit to the work of Ecological Stewardship: The work Pope Francis call us to in his encyclical, *Laudato Si'*—On Care For Our Common Home. We invite you to prayerfully consider being part of helping shape and animate this important work at The Basilica. Will you join us? Consider learning more by calling Janice at 612.317.3477 or emailing [jandersen@mary.org](mailto:jandersen@mary.org).

### ALIGN MPLS CAMPAIGN GUIDE

The Basilica is an active member of Align Mpls, an interfaith collaboration of 17 Minneapolis congregations and people with lived experiences working together to address homelessness and poverty. We have a Campaign Guide that translates our shared values and beliefs into action, whether serving our unsheltered neighbors or advocating for laws and policies that creates more affordable housing. Review the Align Campaign Guide at [alignmpls.org/organizingcampaign](http://alignmpls.org/organizingcampaign).

## SHORT LISTENING WORKSHOP

SATURDAY, JANUARY 21, 9:30AM  
RECTORY DINING ROOM

Emmaus Listening Ministry seeks to bring the gift of listening to the world. Resolve to do this better in the new year! For those not quite ready to enter the ministry or commit to the full training, a short listening workshop will be offered to help us become better listeners to those we love and those we work with.

Come, experience a couple of the foundational, core principles of listening and learn new skills to apply in your personal life or in your volunteering or professional world. Registration required for this free workshop at [mary.org/listeningworkshop](http://mary.org/listeningworkshop). Questions? Contact Wendy at 612.317.3474 or [wcaduff@mary.org](mailto:wcaduff@mary.org).

## EMMAUS LISTENERS

Ready to listen deeply to another? Take a deep dive into this beautiful ministry of walking with another at The Basilica through various life challenges, joys, or upheavals by being willing to accompany them. You'll learn active listening skills, set your own appointments, and have monthly Ministry Support sessions with others who are practitioners in the art of listening. Interview with a member of the Leadership Team now, training happens in February and March. Contact Wendy for more information on training at [wcaduff@mary.org](mailto:wcaduff@mary.org) or 612.317.3474 or to have one of our Volunteer Listeners get in touch with you once, twice, or as long as you find it helpful.

## BRRRR!

Make a shawl, get a shawl. The Basilica prayer shawl ministers are busy making prayer shawls for those who are sick, sad, healing or in a life transition. Let Wendy know at [wcaduff@mary.org](mailto:wcaduff@mary.org) or 612.317.3474 if you'd like to join the team of those who knit or crochet or request a prayer shawl for you or someone you care about.

## DEVELOPMENT TEAM OPENINGS

The Development Team is looking for an Gifts Processor and Development Officer. This is a fun, busy, and dedicated department that supports the entire organization and community.

### DEVELOPMENT OFFICER

Manages a portfolio of donors to inspire and solicit gifts for The Basilica of Saint Mary parish, St. Vincent de Paul (SVdP) ministries, and The Basilica Landmark. Fundraising experience is essential.

### GIFT PROCESSOR

Daily data entry of all gifts and pledges to The Basilica of Saint Mary, Saint Vincent de Paul (SVdP), and The Basilica Landmark. Database experience with Raiser's Edge (RE NXT and Luminare) or comparable experience with another CRM. Process acknowledgment letters and other administrative support to help maintain an accurate, complete database.

Interested in joining our team? Contact Audra Johnson at [ajohnson@mary.org](mailto:ajohnson@mary.org) or 612.317.3422.

## THE BASILICA LANDMARK

Your financial gifts to The Basilica Landmark's Annual Fund help to preserve, restore, and advance the historic buildings and campus.

In 2022, The Basilica Landmark funded the following projects:

- Energy Efficient Outside Lampposts
- Removing moisture-retaining ceiling insulation
- Nets installed to protect the congregation from falling plaster
- Tuckpointing and stained-glass window assessments

We invite you to join our efforts by making a gift to The Basilica Landmark's Annual Fund today. Please donate online at [thebasilicalandmark.org/give](http://thebasilicalandmark.org/give) or by calling the Development Office at 612.317.3472.



## DEVELOPMENT

### THE BASILICA FUND

Please consider a recurring gift to The Basilica Fund as we kick off our 2023 giving year. This allows us to budget for the year ahead.

Your gift will help our community meet the moment—to foster opportunities for future growth as we seek to build-up a Basilica community that is healthy, vibrant, and sustainable for future service to all. Our ministries, along with the daily work of this parish, are not possible without you and your support of The Basilica Fund. 94% of our annual operating expenses are funded by your gifts.

Make your gift online at [mary.org/give](http://mary.org/give) or scan the QR Code.



Thank you for your faithful support in making The Basilica of Saint Mary a home of spiritual nourishment, a beacon of hope, and an advocate for change!

### CHRISTMAS FLOWERS

**In Honor/In Memory of**

*Additional names not included in Christmas leaflet*

Stanley G. Buczek  
MaryJo Hendricks  
Papa Olsen  
Russell N. Provo & Patricia J. Provo  
Dave Sam  
John Schutz

### 2022 ANNUAL GIVING STATEMENTS

Your 2022 Annual Giving Statement will be mailed to you at the end of January 2023.

### THE BASILICA OF SAINT MARY FISCAL YEAR-TO-DATE FINANCIAL REPORT

JULY 1 - NOVEMBER 30, 2022

	YTD Actuals	YTD Budget	Variance	YTD % Variance
<b>Income/ Contributions</b>	1,181,574	1,164,045	17,529	2%
<b>Expenses</b>	1,520,955	1,486,052	(34,903)	-2%
<b>Net Surplus/ (Deficit)</b>	<b>\$(339,381)</b>	<b>\$(322,007)</b>	<b>\$(17,374)</b>	

Questions? Contact Audra Johnson, Director of Finance & Human Resources at [ajohnson@mary.org](mailto:ajohnson@mary.org) or 612.317.3422.

# INTRODUCTORY RITES

## PRELUDE

5:00; 7:30; 9:30

### *L'Adorazione dei Magi*

Ottorino Respighi (1879-1936), arr. Matthew Steynor  
from *Trittico Botticelliano per piccola orchestra*, P. 151

## INTROIT

*Ecce \* advenit dominator Dominus:  
et regnum in manu eius, et potestas, et imperium.*

*Deus, iudicium tuum regida:  
et iustitiam tuam filio regis.*

*Reges Tharsis et insulae munera offerent:  
reges Arabum et Saba dona adducent.*

*Et adorabunt eum omnes reges terrae: omnes gentes servient ei.*

Behold, the Sovereign Lord is coming;  
kingship, government, and power are in his hands.

Endow the King with your judgment, O God,  
and the King's son with your righteousness.

The kings of Tarshish and their house offer you gifts;  
Kings of Arabia and Seba also bring offerings.

All kings of the earth shall adore him; all nations shall serve him.

-Cf. Mal 3:1; 1 Chron 29:12; Ps 71:1, 10, 11

## PROCESSIONAL HYMN

*Brightest and Best*



- Bright - est and best of the stars of the
- Cold on his cra - dle the dew - drops are
- What shall we give him, in cost - ly de -
- Vain - ly we of - fer each am - ple o -
- Bright - est and best of the stars of the



morn - ing, dawn on our dark - ness and  
shin - ing; low lies his head with the  
vo - tion, Shall we bring in - cense and  
bla - tion, vain - ly with gifts would his  
morn - ing, dawn on our dark - ness and



lend us your aid. Star of the east, the ho -  
beasts of the stall; an - gels a - dore him in  
of - f'rings di - vine, gems of the moun-tain and  
fa - vor se - cure; rich - er by far is the  
lend us your aid. Star of the east, the ho -



ri - zon a - dorn - ing, guide where our  
slum - ber re - clin - ing, mak - er and  
pearls of the o - cean, myrrh from the  
heart's ad - o - ra - tion, dear - er to  
ri - zon a - dorn - ing, guide where our



in - fant re - deem - er is laid.  
mon - arch and sav - ior of all.  
for - est or gold from the mine.  
God are the prayers of the poor.  
in - fant re - deem - er is laid.

## GREETING

## PENITENTIAL ACT

## GLORIA

Krubsack

Refrain



Glo-ry to God in the high - est, and on



earth peace to peo - ple of good will.

Final time



A - men. A - men.

We praise you, we bless you, we adore you, we glorify you, we give you  
thanks for your great glory, Lord God, heavenly King,  
O God, almighty Father. **Refrain**

Lord Jesus Christ, Only Begotten Son, Lord God, Lamb of God,  
Son of the Father, you take away the sins of the world, have mercy on us;  
you take away the sins of the world, receive our prayer;  
you are seated at the right hand of the  
Father, have mercy on us. **Refrain**

For you alone are the Holy One, you alone are the Lord,  
you alone are the Most High, Jesus Christ, with the Holy Spirit,  
in the glory of God the Father. **Final Refrain**

## COLLECT

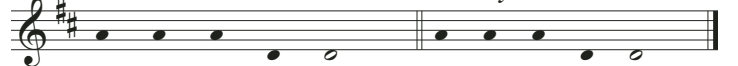
# LITURGY OF THE WORD

## FIRST READING

*Isaiah 60:1-6*

*Cantor:*

*Assembly:*



Ver - bum Do - mi - ni.

De - o gra - ti - as.

The word of the Lord.

Thanks be to God.

## RESPONSORIAL PSALM (5:00; 7:30; 9:30)

*Psalm 72*  
Grogan



Lord, ev - 'ry na - tion on



earth will a - dore you.





**RESPONSORIAL PSALM** (11:30; 5:00)

*Psalm 72*

*Soper*

Lord, ev - ery na - tion on earth will a - dore you.

Lord, ev - ery na - tion on earth will a - dore you.

**SECOND READING**

*Ephesians 3:2-3a, 5-6*

*Cantor:* Ver - bum Do - mi - ni. *Assembly:* De - o gra - ti - as.  
The word of the Lord. Thanks be to God.

**GOSPEL ACCLAMATION**

*Krubsack*

Al - le - lu - ia, al - le - lu - ia, al - le - lu - ia.

Al - le - lu - ia, al - le - lu - ia, al - le - lu - ia.

We saw his star at its rising  
and have come to do him homage.

**HOLY GOSPEL**

*Matthew 2:1-12*

**RESPONSE TO THE GOSPEL**

*Praise We Sing to Christ the Lord*

Praise we sing to Christ the Lord, vir - gin's son, in -

car - nate Word! To the ho - ly Tri - ni - ty

praise we sing e - ter - nal - ly! Glo -

- - - ri - a in ex - cel - sis

De - o; glo - - -

- ri - a in ex - cel - sis De - o.

**HOMILY** *(Please be seated.)*

**NICENE CREED** *(Please stand as you are able.)*

**I** BELIEVE IN ONE GOD, THE FATHER ALMIGHTY, maker of heaven and earth, of all things visible and invisible. I believe in one Lord Jesus Christ, the Only Begotten Son of God, born of the Father before all ages. God from God, Light from Light, true God from true God, begotten, not made, consubstantial with the Father; through him all things were made.

For us men and for our salvation he came down from heaven, **and by the Holy Spirit was incarnate of the Virgin Mary, and became man.** For our sake he was crucified under Pontius Pilate, he suffered death and was buried, and rose again on the third day in accordance with the Scriptures.

He ascended into heaven and is seated at the right hand of the Father. He will come again in glory to judge the living and the dead and his kingdom will have no end.

I believe in the Holy Spirit, the Lord, the giver of life, who proceeds from the Father and the Son, who with the Father and the Son is adored and glorified, who has spoken through the prophets. I believe in one, holy, catholic, and apostolic Church. I confess one Baptism for the forgiveness of sins and I look forward to the resurrection of the dead and the life of the world to come. Amen.

**INTERCESSIONS**

*Kolar*

Te ro - ga - mos, ó - ye - nos. Lord, hear our prayer.

**COLLECTION OF OUR FINANCIAL STEWARDSHIP**

**LITURGY OF THE EUCHARIST**

**PREPARATION OF THE ALTAR & THE GIFTS**

*(Please stand as our gifts are brought forward.)*

**CAROL**

*Angels, from the Realms of Glory*

1. An - gels, from the realms of glo - ry,
2. Sag - es, leave your con - tem - pla - tions,
3. Though an in - fant now we view him,

Wing your flight o'er all the earth; You who sang cre - Bright - er vi - sions beam a - far; Seek the great De - He shall fill his heav'n - ly throne, Gath - er all the

a - tion's sto - ry, Now pro - claim Mes - si - ah's birth: sire of na - tions; You have seen his morn - ing star. na - tions to him; Ev - 'ry knee shall then bow down.

Come and wor - ship, come and wor - ship,

Wor - ship Christ, the new - born King.



MEDITATION

9:30

Salvation Is Created  
Pavel Tchesnokoff (1877-1944)  
The Basilica Cathedral Choir

Salvation is created in midst of earth, O our God. Alleluia.

5:00

Rise Up, Shepherd, and Follow  
Trad. Spiritual, arr. Cooney & Daigle

Rise up, rise up, Rise up shepherd and follow.  
Rise up and follow that star.

There's a star in the East on Christmas morn, rise up, shepherd and follow.  
It will lead to the place where Christ was born,  
Rise up shepherd and follow.

Follow the Star of Bethlehem, rise up shepherd and follow.  
Leave your sheep and leave your lambs, Rise up shepherd and follow.  
Leave your ewes and leave your rams, Rise up shepherd and follow.

Follow, follow, rise up shepherd and follow.  
Follow the Star of Bethlehem, Rise up, shepherd and follow.  
Rise up shepherd and follow. Rise up, rise up, rise up, follow that star.

PRAYER OVER THE OFFERINGS

EUCCHARISTIC PRAYER

PREFACE ACCLAMATION

Musical notation for Preface Acclamation: Ho-ly, Ho-ly, Ho - ly Lord God of hosts.

Musical notation for Preface Acclamation: Heav-en and earth are full of your glo-ry. Ho - san-na in the

Musical notation for Preface Acclamation: high-est. Bless-ed is he who comes in the name of the Lord.

Musical notation for Preface Acclamation: Ho-san-na in the high-est. Ho-san-na in the high-est.

(Please kneel as you are able.)

MEMORIAL ACCLAMATION

Musical notation for Memorial Acclamation: Save us, Sav-ior of the world, for by your Cross and

Musical notation for Memorial Acclamation: Res - ur - rec - tion you have set us free.

GREAT AMEN

Musical notation for Great Amen: A - men, a - men, a - men.

Musical notation for Great Amen: A - men, a - men, a - men.

COMMUNION RITE

THE LORD'S PRAYER (Please stand as you are able.)

GREETING OF PEACE

LAMB OF GOD

Musical notation for Lamb of God: Lamb of God, you take a - way the sins of the

Musical notation for Lamb of God (To repeat): world, have mer-cy on us.

Musical notation for Lamb of God (Last time): world, grant us peace.

INVITATION TO COMMUNION

Priest: Behold the Lamb of God, behold him who takes away the sins of the world. Blessed are those called to the supper of the Lamb.

Assembly: Lord, I am not worthy that you should enter under my roof, but only say the word and my soul shall be healed.

COMMUNION PROCESSION

What Child is This

Musical notation for Communion Procession: 1. What child is this, who, laid to rest,

- 2. Why lies he in such mean es - tate
- 3. So bring him in - cense, gold, and myrrh;

Musical notation for Communion Procession: On Mar - y's lap is sleep - ing, Whom Where ox and ass are feed - ing? Good Come, peas - ant, king, to own him. The

Musical notation for Communion Procession: an - gels greet with an - thems sweet While Chris - tian, fear; for sin - ners here The King of kings sal - va - tion brings; Let

Musical notation for Communion Procession: shep - herds watch are keep - ing? si - lent Word is plead - ing. lov - ing hearts en - throne him.

Musical notation for Communion Procession: This, this is Christ the King, Whom shep-herds guard

Musical notation for Communion Procession: and an - gels sing; Haste, haste to bring him laud,

Musical notation for Communion Procession: The babe, the son of Mar - y. 9

MEDITATION

9:30

*A Christmas Carol*  
Charles Ives (1874-1954)  
arr. Paul C. Echols (1944-1994)  
The Basilica Cathedral Choir

Little child of Bethlehem! Do we see thee now?  
Do we see thee shining o'er the tall trees?  
Little Child of Bethlehem! Do we hear Thee in our hearts?  
Hear the angels singing:  
Peace on earth, goodwill to men! Noel!

O'er the cradle of a King, Hear the angels sing:  
*In excelsis gloria, gloria!*  
From His Father's home on high, Lo! for us He came to die;  
Hear the angels sing: *Venite adoremus Dominum.*

11:30

*See Amid the Winter Snow*  
John Goss (1880-1880)  
arr. Dan Forrest  
Mundus

Alleluia. See, amid the winter's snow, born for us on earth below,  
See the tender lamb appears, promised from eternal years.

*Hail thou everblessed morn, Hail redemption's happy dawn,  
Singing through all Jerusalem: "Christ is born in Bethlehem."*

Alleluia. Lo, within a manger lies He who built the lofty skies,  
He, who, throned in light sublime, sits amid the cherubim.

Sacred infant, all divine, what a tender love was Thine,  
Thus to come from highest bliss, down to such a world as this.

-Edward Caswall (1814-1878)

5:00

*What Is the Star*  
Zack Stachowski

What is the star that shines as beacon,  
revealing the place of our Christ?  
What is it now that guides us to Jesus,  
showing our way through the night?

Who comes to earth among the lowly;  
a refugee, fleeing from birth?  
Who turns our eyes from searching the skies,  
toward seeing God's presence on earth?

This Christ who dined among outcasts and sinners,  
who walked with the broken and weak;  
this Christ who challenged the pow'r of the mighty,  
lifting the last and the least.

God comes to us, a baby crying, born on this stable floor.  
Calling our names, God shows us the way:  
our star is the cry of the poor.

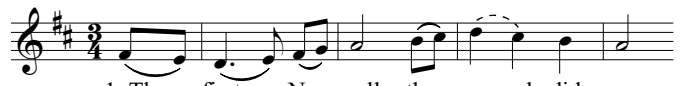
**PRAYER AFTER COMMUNION** *(Please Stand.)*

# CONCLUDING RITES

## BLESSING AND SENDING

## RECESSIONAL HYMN

*The First Nowell*



1. The first No - well the an - gel did say  
2. They look - ed up and saw a star  
3. And by the light of that same star  
4. Then let us all with one ac - cord



Was to cer-tain poor shep-herds in fields as they lay;  
Shin-ing in the east be - yond them far;  
Three wise men came from coun - try far;  
Sing prais - es to our heav - 'nly Lord,



In fields where they lay keep-ing their sheep,  
And to the earth it gave great light,  
To seek for a king was their in - tent,  
Who made the heav'ns and earth of naught,



On a cold win-ter's night that was so deep.  
And so it con - tin - ued both day and night.  
And to fol - low the star where - ev - er it went.  
And with his blood our life has bought.



No - well, No - well, No - well, No - well!



Born is the King of Is - ra - el.

## POSTLUDE

5:00; 7:30; 9:30

*Carillon on 'Orientis Partibus'*  
Arthur Wills (1926-2020)

## ACKNOWLEDGEMENTS

All Rights Reserved.

Used with permission under OneLicense A-704048.

Processional Hymn: *Brightest and Best*  
Text: Reginald Heber, 1783-1826, alt.  
Tune: MORNING STAR 11 10 11 10; James P. Harding, 1850-1911, adapt.

Mass Setting: Mass V Text: *The Roman Missal* © ICEL. All rights reserved. Used with permission.  
Music: *Mass in Honor of Mary, Mother of God*; Donald Krusbach © 2010, Liturgical Press.

Responsorial Psalm (5:00; 7:30; 9:30): *Lord, every nation on earth*  
Text: Psalm 72, *New American Bible*, excerpts from the *Lectionary for Mass for Use in the Dioceses of the United States of America*, second typical edition, © 2001, 1998, 1986, 1970, Confraternity of Christian Doctrine, Inc., Washington, DC.  
Music: © 1996, Robert Grogan. Used with the permission of the composer.

Responsorial Psalm (11:30; 5:00): *Every nation on earth*  
Text: Psalm 72:1-2, 7-8, 10-11, 12-13; © 1969, 1981, 1997, ICEL.  
Tune: Scott Soper, © 2016, OCP Publications.

Gospel Response: *Praise We Sing to Christ the Lord*  
Text: attr. Ambrose of Milan, 340-397; Martin Luther, 1483-1546; tr. hymnal version *Les anges dans nos compagnes*; French, c. 18th c.; tr. from *Crown of Jesus Music*, London, 1862.  
Tune: GLORIA, 7777 with refrain; French traditional.

Carol: *Angels From the Realms of Glory*  
Text: Sts. 1-3, James Montgomery, 1771-1854; st. 4, *Christmas Box*, 1825.  
Tune: REGENT SQUARE, 8 7 8 7 with refrain; Henry Smart, 1813-1879.

Intercessions: Setting: *Oración de los fieles*; Peter M. Kolar, © 2001, 2003, World Library Publications.

Communion: *What Child is This*  
Text: William C. Dix, 1827-1898.  
Music: GREENSLEEVES, 8 7 8 7 with refrain, English ballad, 16th c.

Recessional Hymn: *The First Nowell*  
Text: English carol, 17th c.  
Tune: THE FIRST NOWELL, Irregular with refrain;  
English carol; harm. from *Christmas Carols New and Old*, 1871.

**TaxPrep Solutions, Inc.**  
Income Tax & Accounting Services  
Ronald C. Kohls, EA, MBA • Parishioner  
7600 Boone Ave. N. Ste 29, Brooklyn Park, MN 55428  
www.mntaxprep.com (763) 425-8229

**YOUR REALTY**  
**Frank Bielinski**  
(612) 272-7075  
www.yourrealty.org

**Our Lady of Peace**  
HOSPICE & HOME HEALTH CARE  
**COMPASSIONATE end-of-life care**  
**WHEREVER HOME MAY BE**  
**HospiceMN.com**  
641-789-5031

**Principal**  
**Justin Murphy, CMFC®**  
**We can help you plan for that.**  
• Retirement Planning  
• Life Insurance  
• Disability Insurance  
Financial Representative  
Principal Securities Registered Representative  
Investment Advisor Representative  
**(952) 277-4267**  
Murphy.Justin@Principal.com  
Principal Life Insurance Co and Principal National Life Insurance Co. Securities and advisory products offered through Principal Securities, Inc. member SIPC, all members of Principal Financial Group, Des Moines, IA

**LONGLEY & POPE LAW, PLLC**  
**Catholic-Owned Law Firm**  
**Serving the State of Minnesota**  
• Worker's Compensation • Personal Injury  
• Family Law • Estate Planning  
• Criminal Defense  
**Call Graciela Bloch**  
**to schedule your Free Consultation**  
**(612) 315-3064**  
**LongleyPope.com**  
Parishioner

**Gearty-Delmore**  
FUNERAL CHAPELS, INC.  
www.gearty-delmore.com

3888 West Broadway  
Robbinsdale, MN 55422  
763-537-4511  
15800 37th Ave. No.  
Plymouth, MN 55446  
763-553-1411  
3960 Wooddale Ave. S.  
St. Louis Park, MN 55416  
952-926-1615

**10 MN appliance stores**  
**WARNERS STELLIAN**  
Your Appliance Specialist  
NE Mpls 612-540-5444  
South Mpls 612-825-6465


**Friendly Neighborhood Pub**  
Serving Downtown for 36 Years.  
**612.333.6612**  
16 South 6th Street  
Next door to Murray's  
www.lyonspub.com

**North Star Mini Storage**  
\* Heated \* Self Storage  
  
Reserve online at NorthStarMiniStorage.com  
OUR PRICES START AT \$50  
400 E. Lake St. - Minneapolis  
**612-827-3847**  
**\$20 OFF Storage**  
10x10 Units or Larger  
**\$10 OFF Storage**  
Smaller Units  
NEW CUSTOMERS ONLY. FOR THE FIRST MONTH.  
Must be presented at time of rental. Not valid with other offers.

**UPTOWN Cafe**  
Now Open!  
**3008 Hennepin Ave So.**  
**Minneapolis MN 55405**  
7:am -2:30pm  
Monday - Saturday  
8:00-3:00 Sunday

**UPTOWN Diner**  
**2548 Hennepin Ave So**  
**Minneapolis MN 55403**  
7:00am-10:00pm  
7 days a week for dine in  
Thursday - Saturday Open 24 Hours  
\*Overnight (10pm-7am takeout & delivery only)\*

**LET'S GROW YOUR BUSINESS**  
**CONTACT ME**  
**Gina Shaughnessy**  
gshaughnessy@4LPi.com  
(800) 950-9952 x2487

**ADT-Monitored Home Security**  
Get 24-Hour Protection From a Name You Can Trust  
• Burglary • Flood Detection  
• Fire Safety • Carbon Monoxide  
 Authorized Provider **SafeStreets**  
**833-287-3502**

**RETROUVAILLE**  
A LIFELINE FOR MARRIED COUPLES  
100% confidential.  
**Help For Your Marriage**  
www.helpourmarriage.org  
800-470-2230

**SCHEDULE A TOUR TODAY!**

**Independent, Assisted, and Short-Term Senior Rentals**  
Beautiful apartments with stunning views of the city, delicious meals, social programming, fitness classes and 24-hour homecare and concierge services.

**THE KENWOOD**  
www.thekenwood.net  
825 SUMMIT AVE. | MINNEAPOLIS

Call Karen at **(612) 294-1683** for more information.

**"THE CHURCH IS A Love Story NOT AN INSTITUTION!"**  
-Pope Francis



# Washburn - McReavy

washburn-mcreavy.com

Funeral Chapels, Cemeteries and Cremation Services

## DAVIES CHAPEL

2301 Dupont Avenue S  
612.377.2203

## EDINA CHAPEL

5000 W 50th Street  
952.920.3996

Recovering HOPE Treatment Center  
Are you struggling with sobriety and motherhood?  
RecoveringHope.life  
FOR MORE INFORMATION, CALL: 844.314.HOPE (4673) | MORA, MN

BabyQuip AS SEEN ON SHARK TANK  
Quality baby and toddler gear rentals delivered to your door.  
Amy Ludwig, Parishioner  
babyquip.com/amy585  
612-465-9139 | amy585@babyquip.com

GOODSHEPHERD SCHOOL  
Preschool through 6th grade  
145 Jersey Avenue S, Golden Valley  
763-545-4285  
www.gsgvschool.org

MSI Power Equipment  
MINNEAPOLIS SAW INC.  
SALES - PARTS - SERVICE  
LAWN MOWERS RIDERS CHAIN SAWS GRASS TRIMMERS LEAF BLOWERS SNOW BLOWERS  
MINNEAPOLISSAW.COM | 763-781-9312 | 831 40TH AVE NE

Edina Realty MICHAEL TIERNEY REALTOR  
Parishioner/Cantor  
Managing Broker  
An Irishman on your home team.  
(612) 385-4359  
michaeltierney@edinarealty.com

A ST. THOMAS CHRISTMAS:  
DAWNING LIGHT  
The University of St. Thomas Department of Music will be performing choral and instrumental Christmas selections on Sunday, December 4th at 4 p.m. and 7:30 p.m. in Minneapolis' Orchestra Hall.  
For tickets visit minnesotaorchestra.org/StThomasChristmas or call (612) 371-5656.  
Department of Music College of Arts and Sciences ST. THOMAS

PROFESSIONAL TAX AND ACCOUNTING SERVICES  
Fernando Perez  
INFO 612.724.5253  
1516 E Lake St. Suite 201 Minneapolis, MN  
En el 2do Piso de Plaza Verde  
fernando@professionaltaxadvisor.com  
www.professionaltaxadvisor.com

Classic Marble Restoration  
763.784.2483  
www.classicmarblerestore.com

612-729-1635  
LANDSCAPING  
6611 Chicago Ave South Richfield, MN  
LandscapingMinneapolisMN.com

BRINGING CATHOLIC VALUES TO LIFE  
CALL OR TEXT FOR A FREE LIFE QUOTE  
CHRIS DUNA  
612-601-1046  
cduna@catholicforester.org  
CATHOLIC ORDER OF FORESTERS  
A Fraternal Benefit Society Since 1883 | catholicforester.org  
Home Office: 355 Shuman Blvd, Naperville, IL 60563 | 800-552-0145

MINNESOTA ORCHESTRA  
EL MESÍAS (THE MESSIAH)  
WITH THE MINNESOTA ORCHESTRA  
Sunday December 11 4pm / Domingo 11 diciembre 4pm  
Church of the Ascension, North Minneapolis  
Pay what you wish / Paga lo que desees  
AHMED ANZALDÚA BORDER CROSSING  
minnesotaorchestra.org/elmesias  
All artists, programs, dates and prices subject to change.

Morningstar COFFEE  
Community Runs on Morning Star

SPRINKLER SYSTEMS IRRIGATION INC.  
LAWN IRRIGATION  
Jason Erickson 952-922-1202  
sprinklersinc130@gmail.com

PULSE Electric Inc.  
RESIDENTIAL COMMERCIAL INDUSTRIAL  
651.324.8427  
PulseElectric.net

Insurance Broker Agency  
MN Hablamos Español  
Auto-Home-Business-Life-Workers Compensation  
Tel: 763-337-9607  
Cell: 952-215-6021  
service@mminsurancageencies.com

Colonial Cleaners, Inc.  
Monday - Friday 8:00am - 6:00pm  
Saturday 10:00am - 4:00pm  
612.823.8095  
3701 Lyndale Ave. S. • Minneapolis, MN  
www.colonialcleanersmn.com

Colorful historic tours led by Lovable Know-It-All Sr. Celeste!  
Gangster Tour, Gilded Age Tour, St. Peter St. Paul Tour and more!  
Go to celestial-tours.com for more information!  
651-243-1707

Live + Jesus!  
Consider a life of prayer and presence in Visitation's urban monastic community.  
More information at: VisitationMonasteryMinneapolis.org