



ST. MICHAEL THE ARCHANGEL
CATHOLIC PARISH

*All Souls
Requiem Mass*

TUESDAY, NOV. 2, 7:00 P.M.

We will gather as a parish community to pray for our loved ones who have died, and for all the faithful departed.



**October
31
2021**

31st Sunday in Ordinary
Time

Pastoral Priorities:

- Deepening Spirituality
- Evangelization
- Strengthening Marriage and Family Life



Donations

Welcome	page 2
Worship	page 3
Outreach	page 4
Parish Community	page 4
Faith Formation	page 5
Marriage/Family/School	page 6
Stewardship	page 7
Archdiocese News	page 7
Care and Support	page 8

WELCOME



Pastor
Fr. Brian Schieber
frschieber@stmichaelcp.org
913-402-3932



Parochial Vicar
Fr. Edward Ahn
frahn@stmichaelcp.org
913-402-3914



Parochial Vicar
Fr. Luke Doyle
frdoyle@stmichaelcp.org
913-402-3915

GENERAL PARISH INFORMATION

PARISH OFFICE



14251 Nall Ave.
Leawood, KS 66223



(913) 402-3900

SCHOOL OFFICE

(913) 402-3950

PRE-SCHOOL OFFICE

(913) 402-3970

stmichaelcp.org



Please join us in welcoming these new members:

- Samuel and Beth Esch
- Alicia Geaga
- Brian and Alyson Jones
- Anikka Martin
- Jason and Angie O'Brien
- Patrick and Rosemary O'Brien
- Christopher Robbles and Amanda Donoho
- Nick and Ashley Rudolph
- Larry Vu and Lan Ho
- Bryce and Lesley Williams

Need a priest after hours for an emergency?

Contact the rectory at 913-402-3980. For other communication with our priests, please use their contact info above.



Deacon Mark Stukel
deacon.mark@stmichaelcp.org
913-402-3929



Deacon John Weist
deacon.john@stmichaelcp.org
913-402-3939

PARISH OFFICE HOURS

The Parish Office is open Mon. - Fri.
8:30 a.m. - 4:30 p.m.

Mail slot near office door is checked regularly, or use the drop boxes at the welcome desks in the church.

Parish Office will be closed on Nov. 3 for the Parish Staff Retreat.

OUR STAFF

Our staff is ready to assist you!

For a listing of all staff members, go to stmichaelcp.org/contact-us.

PLEASE PRAY FOR THE REPOSE OF THE SOUL OF...

Bill Culpepper, stepfather of parishioner Nicole Zacharias

Gregg Pickert, parishioner



JOIN OUR PARISH

Welcome! Our priests would like to meet all of our new or prospective parishioners. Attend our *New Member Welcome* to learn about our parish and to begin the registration process. **The *New Member Welcome* is the first and third Sunday of the month after the 9:00 a.m. Mass** in the St. Gabriel Room at the base of the stairs below the church entrance. **Questions? Contact Desiree Greco at desiree.greco@stmichaelcp.org or 913-402-3969.**

WORSHIP

WEEKDAY MASS AND SUNDAY WORSHIP

Daily Mass Schedule

Monday: 6:40 a.m.

Tuesday: 6:40 a.m. & 8:15 a.m.

Wednesday: 6:40 a.m. & 8:15 a.m.

Thursday: 6:40 a.m. & 5:30 p.m.

Friday: 6:40 a.m. & 8:15 a.m.

Sat. 8:15 a.m.

Masses on the Lord's Day

Saturday 5:00 p.m.

Sunday 7:30 a.m., 9:00 a.m., 10:30 a.m., 12:00 p.m., and 5:00 p.m.

Mass will continue to be livestreamed from St. Michael Church at 9 a.m. on our homepage, YouTube Channel and Facebook.

During the noon Sunday Mass, the north transept (left of the altar) will be reserved as "mask required" and ideally for those who are vulnerable or live/interact with vulnerable people.

CONFESSIONS

3:30 – 4:50 p.m. Saturday and Sunday

7:10 – 8:05 a.m. Wednesday (not on Sept. 29)

7:00 – 8:10 a.m. First Saturday

All confessions are in the church.

Mass Intentions: Mon. Nov. 1 - Sun. Nov. 7

11/1	6:40	Nnedi Anya †
	5:30	Parish
11/2	6:40	All the Souls of the Faithfully Departed
	8:15	All the Souls of the Faithfully Departed
11/3	6:40	Gerardo Vergara †
	8:15	Janet Kile †
11/4	6:40	Rose Ida Bergman †
	5:30	Estella Castro †
11/5	6:40	Joan Schelling †
	8:15	Group Intentions: Ed & Virginia Roman †† Todd Schmid †
11/6	8:15	Gerardo Vergara †
	5:00	Eric & Judy Klein † †
11/7	7:30	Mary Schorgl
	9:00	Patty Rogers †
	10:30	PARISH
	Noon	Ginny Schorgl †
	5:00	Pat Tracy †

READINGS FOR OCTOBER 31

Deuteronomy 6:2–6 • Psalm 18:2–3, 3–4, 47, 51 • Hebrews 7:23–28 • Mark 12:28b–34

READINGS FOR NOVEMBER 7

1 Kings 17:10–16 • Psalm 146:7, 8–9, 9–10 • Hebrews 9:24–28 • Mark 12:38–44 or 12:41–44

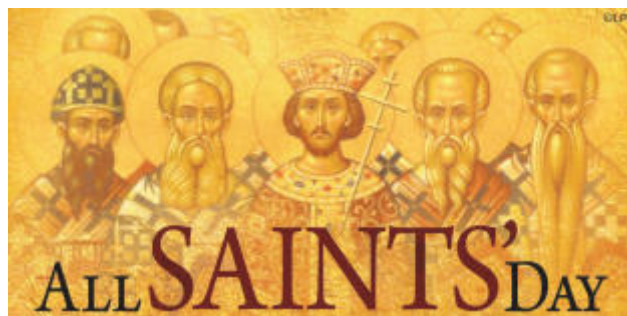
Michaelmas Parish Art Exhibit
Now Thru Nov. 21
featuring original art created
by our parishioners



Check out the art on the lower level of the church; find out about the artists at stmichaelcp.org/parish-art.

ALL SAINTS DAY - NOVEMBER 1

Because it falls on a Monday this year, All Saints Day is not a Holy Day of Obligation. However, there will be Mass at 6:40 a.m. and 5:30 p.m. on November 1.



YOUTH FAITH FORMATION

RELIGIOUS EDUCATION UPDATE

All RE Families are invited to join us at our regularly scheduled classes the week of November 9/10.

A link to RSVP is in the RE newsletter. Please join us as we share ways to celebrate the Liturgical Year at home. We will focus on prayers, snacks, and a take-home activity to help your family celebrate the last Sunday of the Church year: The Feast of Christ the King!



ALL HALLOWS EVE CELEBRATION FOR FAMILIES

October 31

6:00 p.m. Party in the Parish Hall

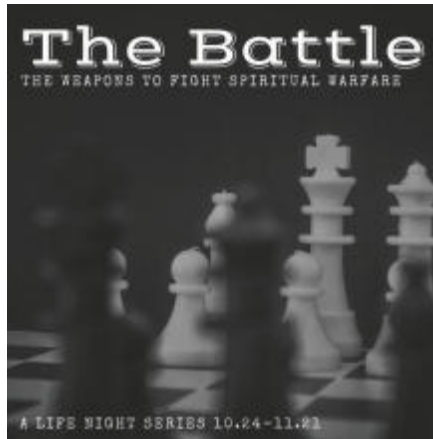
Come dressed as your favorite saint, play games, and enjoy a meal together.

RSVP to Brad & Maria Fox at mariafox11.5@gmail.com or 858-731-6342

Attendees are asked to contribute to the potluck. Parents can dress up as a saint too!



LIFE TEEN - HIGH SCHOOL



We continue with our Life Night Series, The Battle. This series points to the reality of spiritual warfare. It will show that the devil is real and will do anything to turn us away from God. More importantly, this series will give hope that we are equipped to win this battle through the sacraments. This week's Life Night will unpack the Sacrament of Baptism in two ways:

- * How does Baptism equip us for the battle?
- * How do we use those sacramental graces daily in the battle?

See all high school teens after the 5 p.m. Sunday Mass. We'll meet in the Youth Room; go through the courtyard doors to the school.

7TH & 8TH GRADERS - EDGE

Throughout history, many different artists have created great masterpieces that have been preserved and remembered. In the same way, all of creation is the masterpiece of God that reveals who He is. All 7th and 8th grade teens are invited to join us at EDGE Nights, 7-8:30 p.m. in the Youth Room; go through the courtyard doors to the school.

Parent Formation Night: Wed. November 3

All 7th & 8th grade parents who have a child preparing for Confirmation are invited to join us in the church at 7 p.m. We will be joining in with Fr. Luke's series on the book, *From Christendom to Apostolic Mission*. Check-in with our youth ministers at the desks in the church entrance

PIZZA WITH PADRE

For high school teens

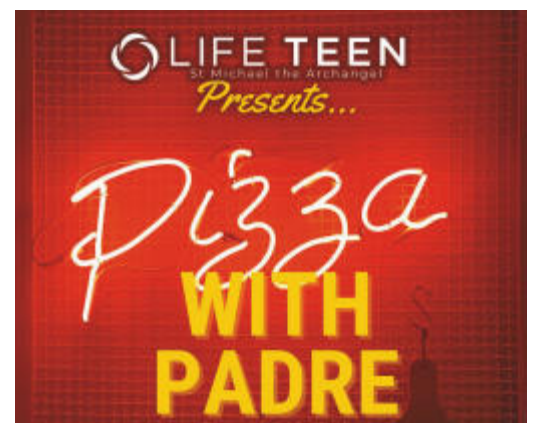
Wednesday, Nov. 3, 8:30 p.m.

School Cafeteria

Join Fr. Luke as we navigate through the questions of today, yesterday and eternity.

This week's question:

Honest Thinking in an Intellectually Dishonest World

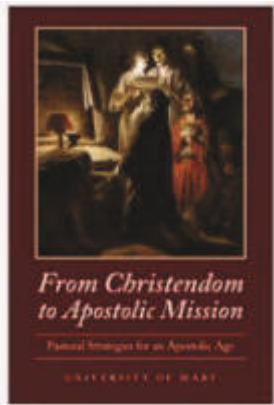


FAITH FORMATION

FROM CHRISTENDOM TO APOSTOLIC MISSION SERIES

Remaining Wednesdays: Nov. 3, and Nov. 10, 7:00 - 8:15 p.m., Parish Hall

This recently-published work (University of Mary Press, 2020) offers a diagnosis with a prescription for the ills confounding a post-Christian culture. Since its 2020 publishing date, the book has gone viral with no advertising, revealing that the message strikes a chord in a culture where Christianity is no longer the prevailing wind.



By understanding how the first spark of apostolic zeal led to the civilizations of Christendom, which then later became complacent and slipped away, we can wrap our minds around the Catholic Church of today and tap into the Holy Spirit for the challenges which lay ahead.

Join Fr. Luke Doyle for this Wednesday evening series to unpack much of the wisdom found within the pages of this text. Attend any or all nights. Reading the book is not required to attend.

Books are available —\$10 suggested donation. See the QR code.



JOIN THE VINE....AND GROW!



The Vine is a small group faith-sharing series hosted in parishioners' homes. The goal of The Vine is friendship with Christ and friendship with each other. Through The Vine, parishioners start with The Crux, a study that discusses salvation history through scripture. After The Crux, parishioners can go on to other studies based on their areas of interest and/or stage in life (ex. JOYS, Marriage Enrichment, Young Families, Young Adult, etc.) Use this QR code or go to stmichaelcp.org/the-vine to sign up to participate in a Vine small group.

Contact Sara Kuhn at sara.kuhn@stmichaelp.org for questions.



ADVENT PARISH MISSION SAVE THE DATES NOV. 28 - 30

We are excited to host Fr. Grismer (featured on EWTN's Lourdes Lessons) who will be our Advent Parish Mission speaker starting the first Sunday in Advent.

Hear his dynamic message on "Jesus the Healer."

Sun. Nov. 28	Getting Muddy with Jesus
Mon. Nov. 29	Expect Unexpected Miracles
Tues. Nov. 30	More Than a Healer



END OF LIFE ISSUES

Assisted suicide is in the news and on lawmakers' agendas. Supporters call it "aid in dying" and claim it is just another option for ending intolerable pain as part of end-of-life care. But assisted suicide is radically different from end-of-life care and the practice of palliative care, the healing art of relieving pain and other distressing symptoms for patients who are seriously ill. In fact, these two agendas are at war with each other.

Different Drugs, Different Results

When properly prescribed for the pain of serious illness, powerful pain medications like morphine and other opioids are safe and effective. Patients can have their pain well-controlled without risk to life, and generally stay alert as well.

Assisted suicide is very different. Where it has been legalized, doctors can prescribe a lethal overdose of pills to patients whom they think will die within six months, so they can kill themselves. The patient then intentionally swallows a massive overdose of barbiturates to cause unconsciousness and death.

The Importance of Intent

Assisted suicide is radically different from end-of-life care and the practice of palliative care.

Besides having opposite results, these two approaches express different intentions.

While pain medication is generally safe under medical supervision, it may have side-effects. For example, barbiturates may be used in rare instances to sedate an agitated patient in the final stage of dying if other pain control methods are inadequate, though this poses some risk of shortening life.

In such cases, the doctor and patient must assess the good they intend and proceed only if this good outweighs the unintended adverse effects. As risk cannot always be eliminated, modern medicine would be impossible without this "principle of double effect." The key is that no one involved intends the bad effects, especially the bad effect of killing the patient.

Assisted suicide, by contrast, directly intends the patient's death, which is never morally permissible. The doctor prescribes an intentionally lethal overdose, with instructions on how to use the pills to cause death. (Interestingly, there is no record that any patient accidentally surviving the overdose has ever tried it again.¹)

Medical organizations like the American Medical Association and the American College of Physicians oppose doctor-assisted suicide, in part because it destroys this essential distinction between intended and unintended effects of treatment. Patients need to be able to trust their doctors to always care for their lives and never deliberately cause death.

Eliminate the Problem, Not the Patient

Palliative care also addresses symptoms beyond physical pain, in ways that go beyond medication. Patients facing serious illness may feel hopeless and depressed, as though their lives have lost meaning. Addressing psychological, emotional, and spiritual problems is essential to palliative care. Assisted suicide alleviates none of these problems, but gives in to them. Consider that about half of patients who had requested assisted suicide under the Oregon law in its first three years changed their minds when the doctor provided palliative care.²

Yet in Oregon, almost none of the patients receiving lethal drugs are evaluated to assess whether their wish for death arises from treatable depression—and over half say they requested the drugs partly because they feel they are becoming a "burden" on others.³ Offering assisted suicide can only confirm and strengthen that feeling. It ignores the underlying problems, instead abandoning and eliminating the patient who has the problems.

Assisted Suicide Undermines Palliative Care

Assisted suicide is detrimental not only for individual patients, but also for patient care on a large scale. In countries like the Netherlands, where assisted suicide has been accepted for many years, progress in palliative care has stagnated.⁴ In Oregon, legalization was followed by an increase in severe untreated pain among terminally ill patients. During a period when 1,832 hospices opened in other states, only five opened in Oregon. In other states legalizing assisted suicide, use of hospice care has fallen below the national average.⁵ By contrast, when states pass new laws forbidding assisted suicide, while affirming that doctors may use drugs like morphine for effective pain control, use of these medications has increased—indicating progress in pain management practices.⁶

The reason is obvious. Optimum palliative care requires years of training and experience, as well as a commitment to the patient as someone with inherent dignity who deserves excellent care. Assisted suicide avoids the need for this hard work and erodes this commitment. It provides a "quick and easy," as well as cheap, answer to terminal illness. Once death is accepted as a solution, why bother to devote resources to more expensive medical progress?

Assisted suicide does not enhance medicine. As noted by a doctor specializing in palliative and hospice care in the Netherlands, killing "becomes a substitute for learning how to relieve the suffering of dying patients."⁷

True Love and Mercy

Do we see people as the problem, such that our responsibility begins and ends with helping patients kill themselves? Or, do we see seriously ill patients as fellow human beings who deserve our love and solutions for their problems? Will we succumb to the "false mercy" of assisted suicide, or will we endorse what Pope St. John Paul II called "the way of love and true mercy"?⁸ Will we dedicate ourselves to providing genuinely compassionate care, as a society and for our own loved ones? Our answer today determines the care available now and for years to come.

[1] Doerflinger, Richard M., M.A. "Oregon's Assisted Suicides: The Up-to-Date Reality in 2017." On Point, no. 21 (March 2018): 5. <https://lozierinstitute.org/wp-content/uploads/2018/03/Oregon-Assisted-Suicide-The-Up-To-Date-Reality-2017.pdf>.

[2] Ganzini, Linda, M.D., Heidi D. Nelson, M.D., M.P.H., Terri A. Schmidt, M.D., Dale F. Kraemer, Ph.D., Molly A. Delorit, B.A., and Melinda A. Lee, M.D. "Physicians' Experiences with the Oregon Death with Dignity Act." The New England Journal of Medicine, no. 342 (February 24, 2000): 557-63. doi:10.1056/NEJM200002243420806.

[3] Assisted Suicide Laws in Oregon and Washington: What Safeguards? PDF. Washington, D.C.: United States Conference of Catholic Bishops, February 22, 2018: 2,5. <https://www.usccb.org/issues-and-action/human-life-and-dignity/assisted-suicide/to-live-each-day/upload/suicideoregonfeb2018.pdf>

[4] Physician-Assisted Suicide: Threat to Improved Palliative Care. PDF. Washington, D.C.: United States Conference of Catholic Bishops, March 4, 2017: 2-3. https://www.usccb.org/issues-and-action/human-life-and-dignity/assisted-suicide/to-live-each-day/upload/suicide_palliative_care-2.pdf

[5] Doerflinger, Richard M., M.A. "The Effect of Legalizing Assisted Suicide on Palliative Care and Suicide Rates: A Response to Compassion and Choices." On Point, no. 13 (March 2017): 3. <https://lozierinstitute.org/wp-content/uploads/2017/03/The-Effect-of-Legalization-of-Assisted-Suicide.pdf>

[6] Brief Amici Curiae for the United States Conference of Catholic Bishops, California Catholic Conference, Oregon Catholic Conference, Washington State Catholic Conference; Catholic Health Association of the United States, and Lutheran Church-Missouri Synod as Amici Curiae in Support of Petitioners, Alberto R. Gonzales, U.S. Attorney General, et al. v. Oregon, et al., No 04-623, *18-22 (filed May 9, 2005). <https://www.usccb.org/about/general-counsel/amicus-briefs/upload/amicus-sct-gonzales-v-oregon-2005-05.pdf>

[7] Zylicz, Zbigniew, M.D. "Palliative Care and Euthanasia in the Netherlands." In The Case Against Assisted Suicide, 142. Baltimore and London: Johns Hopkins University Press.

[8] John Paul II, Evangelium vitae (Gospel of Life) (Vatican City: Libreria Editrice Vaticana, 1995), no. 66-67.



SAVE THE DATE! KANSAS MASS, MARCH & RALLY FOR LIFE 2022

Mark your calendars and plan to join us for IGNITE for LIFE January 25, 2022 in Topeka!

IGNITE for LIFE is the Catholic Youth Kick-Off Rally for the Kansas March for Life. It is an inspirational morning of praise & worship music, motivational speakers, and the celebration of the Holy Sacrifice of Mass with the Bishops of Kansas. Following IGNITE, all are invited to join in the Kansas March for Life to the capitol for the Kansans for Life rally. This year, let's get a great turnout to defend the preborn and to show our support for the Value Them Both Amendment!

IGNITE is sponsored by the Archdiocese of KCK and is geared toward youth, but all are welcome to attend.

For more information and to register, visit archkck.org/IGNITE.

OUTREACH & PARISH NEWS

RED BAG PACKET PICK UP

Did you adopt a Red Bag child? If so, you need to pick up your assigned child.

**Wed. Nov. 3 & Thurs. Nov. 4
3:00 - 5:00 p.m., Parish Hall**

If you cannot make either of these times, please contact Molly Farwell at mzeller@yahoo.com or Chrissy Knopke at christinaknopke@gmail.com as soon as possible.

Thank you for bringing joy this Christmas!



AMERICAN HERITAGE POINSETTIA SALE

SMA American Heritage Girls are excited to offer beautiful poinsettia plants for the holidays. All proceeds support girls at the Honduras Mission Orphanage.

Purchase a poinsettia for yourself and/or donate one to St. Michael's "Friendly Visitors" Ministry and they will deliver it to the sick, homebound, & bereaved of our parish.

Pick up your poinsettia on Saturday, November 27, 2:00 - 4:30 p.m. in the Parish Hall; drive-up delivery (east side) will be available. An American Heritage girl will bring your plant to your car. Or pick up your plant in the Parish Hall at your convenience. Poinsettias will be available for purchase in the narthex after all Masses (Nov. 27-28), while supplies last. Suggested donation is \$14.

To order the poinsettia, scan the QR code or go to stmichaelcp.org/american-heritage-girls



WOMEN OF ST. MICHAEL NOVEMBER EVENT

November 4, 7:00 p.m.

Youth Room at the school (enter through the courtyard doors)

Guest Speaker: Rita Flynn, Program Director of Journey to New Life

Find out about Journey to New Life, a program of reentry into community life after incarceration.

Donations will be accepted for adult-sized men's pants, socks and underwear—thank you.



COLLEGE CARE PACKAGE FALL SIGN UP

Deadline to sign up: Monday, Nov. 22

Do you know a SMA college student who would enjoy getting a care package from our parish for finals? Sign them up!

In order to have accurate mailing information (and to save the cost of returned mail), please remember to update your college student's address even if you have given us the address before! Register at stmichaelcp.org/college-outreach

If you have any questions, contact Kelly Gunderman at kgunderman@kc.rr.com or call the Parish Office at 913-402-3900.



ST. MARY'S FOOD KITCHEN - CASSEROLES NEEDED

Our parish is providing hot meals to St. Mary's Food Kitchen in KCK. If you are interested in providing casseroles, please pick up a pan and recipe in the narthex this weekend or at the Parish Office. Or you can provide your own pan and find the recipe at: stmichaelcp.org/st-marys-food-kitchen. We are also in need volunteers who can serve the meals on-site. Contact Kate at katehausman@gmail.com for more information.

SCHOOL & PARISH NEWS

ST. MICHAEL IS SEARCHING FOR OUR FUTURE SCHOOL PRINCIPAL

St. Michael the Archangel Parish is grateful to Dr. Lorenzo Rizzi for his service to the school. He prayerfully discerned not to return for the 2022-23 school year but will remain as principal for the remainder of this year. We are pleased that Mr. Charles Huber will return next year as assistant principal. Dr. Rizzi provided his notice of departure early so that we have time to find a replacement, and the parish is currently assembling an interview panel of vested parties.

Please pray particularly to St. Joseph for a successful search and hiring process. **For more information and to apply online, go to archkckcs.org.**

SCHOOL NEWS

Third graders researched and wrote reports about a President and then created a pumpkin to look like him.



VOLUNTEERS NEEDED!

...for the Women's CRHP Retreat. You can help with:

- Food Donations
- Weekend Setup/Tear Down
- Chapel Support

Visit stmichaelcp.org/crhp-volunteer-support to sign up.

TRAINING FOR LITURGICAL MINISTERS

Training for New Ushers

Monday, November 1, 6:30-7:30 p.m. in the church

Ushers provide hospitality, offer seating assistance, take up the collection, and ensure a safe environment during the celebration.

Training for New Sacristans

November 9, 6:00 - 7:00 p.m. St. Michael Conference Room

Sacristans must also be trained as Extraordinary Ministers of Holy Communion. Sacristans prepare the sanctuary, sacred vessels, ritual books, and other materials needed for a rich and effective liturgical celebration.

Training for New Lectors

Monday, Nov. 15, 6:30-8:00 p.m.

St. Gabriel Conference Room

Lectors proclaim the Word of God & offer the Universal Prayer in the absence of a Deacon.

Altar Linen Guild

Seventh and eighth graders are invited to join the Altar Linen Guild which irons the linens for the celebration of the Mass.

The guild meets the second Tuesday of every month from 3:30- 4:30 p.m. in the Parish Hall. The first session on Tuesday, Nov. 9, will include a required orientation.

LIVING ADVENT

Sunday, Nov. 21 after 9:00 & 10:30 a.m.

Masses

This event will highlight Advent traditions in our Catholic community. We will have take-home crafts, a Christ the King station, Advent traditions displays from around the world, story time, Advent calendars/wreaths, music, and much more!

Want to help? Contact Desiree Greco at desiree.greco@stmichaelcp.org or 913-402-3969



STEWARDSHIP APPEAL: TIME, TALENT, & TREASURE



Thank you to all parishioners who have submitted your stewardship renewal cards for "talent" and "treasure" (please keep your "time" card for your own reference). If you have not returned your cards, please place them in the Sunday Offertory or in the church Welcome Desk Drop Box or mail to the Parish Office. **You may also complete them online at**

stmichaelcp.org/stewardship. If you have questions, please contact Rob Lisch at rob.lisch@stmichaelcp.org.

SMA NEWS/ AROUND THE ARCH.

COLLECTION REPORT

Donations from 10/18 - 10/24/2021

Tithing	\$	182,554
Building Loan Construction	\$	2,130
Emergency & Charitable Assistance	\$	1,128

Year-To-Date Donations 7/01 - 10/24/2021

Tithing	\$	1,665,766
Building Loan Construction	\$	35,283
Emergency & Charitable Assistance	\$	14,408

VETERANS DAY OBSERVANCE

Thursday, Nov. 11, 2 p.m.

Prince of Peace Mausoleum Chapel
Resurrection Cemetery

83rd and Quivira Road, Lenexa, KS

Catholic Cemeteries of Northeast Kansas will host a special tribute program in observance of Veterans Day 2021.

Veterans, family members, and friends are invited to attend. The American Legion band will provide a patriotic musical prelude at 1:30 p.m. Featured speaker will be Louis Vallejo, retired senior master sergeant, U.S. Air Force, and retired captain, KCK Police Department.

For more information, call Catholic Cemeteries at 913-371-4040 or email information@cathcemks.org; or visit cathcemks.org.

AFRICAN CATHOLIC COMMUNITY OF KANSAS INAUGURATION CEREMONY

Sunday, November 7
1 p.m.

Celebrant:
Archbishop Joseph
Naumann

Prince of Peace
16000 W. 143rd. St.
Olathe, KS 66062

All are welcome!



DEFENDERS' BALL SAVE THE DATE

Saturday, February 26, 2022

St. Michael School Gym

An elegant cocktail attire gala with a formal seated dinner, live music, auction, and dancing. Gather eight of your friends or come solo or as a couple. This year celebrates and benefits our parish, and the fund-a-need benefits **EMBRACE**.



We are now accepting donations for the auction. One easy way to donate is to purchase an item from the Items may also be sent directly to the Parish Office. Go to stmichaelcp.org/defenders-ball.

Thank you in advance for your generosity!

TRIVIA NIGHT

SAVE THE DATE

Saturday, January 22,
2022

St. Michael Parish Hall

In-person or virtually

An informal, fun competition where teams battle to see who has the greatest knowledge of trivia! Create your own team of eight or enter as solo/couple. Teams are encouraged to dress up and decorate their tables with a theme that fits the team's name.



ST. JAMES OPEN HOUSE

Saturday, November 13, 9:00-11:30am

Sixth, seventh and eighth grade students and families are invited to come tour the school and visit with teachers, coaches, current students, administrators and counselors. Check out athletic programs, community system, fine and performing arts, faith formation, and clubs.

See how our mission is lived out daily.

Parent Financial Aid presentations will be offered at 10, 10:30, and 11 a.m.

With your advance reservation and reserved time this allows us to customize your visit!

RSVP: sjathunder.org/openhouse

MARRIAGE & FAMILY



In Sunday's Gospel a scribe asks Jesus, "Which is the first of all the commandments?" Jesus answers the scribe's question by emphasizing that the greatest Commandment is to love God above all else. Love of neighbor flows from loving God first.

What are some concrete ways your family can put God first, and from that, live a life of loving others as Jesus modeled?



Cody Johnson & Rachael Overbey

November 5

Brock Wolf & Taylor Reynolds

November 13

PORNOGRAPHY OR OTHER STRUGGLES WITH LUST

Sam Meier, MA, LPC, provides counseling from a Catholic perspective

Contact info:

smeier.ma@gmail.com or
913-952-2267



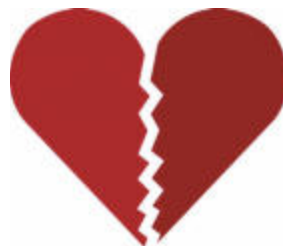
"HEALING THE DIVORCED HEART" DIVORCE SUPPORT GROUP

Next meeting is November 3
(1st & 3rd Wednesday of each month)

7:00 p.m. Gabriel Room
(lower level of the parish)

We who have experienced divorce understand, as perhaps few others can. We too were sad, lonely, scared, and angry, but we have found that with God, time, and the support of others, healing is possible. For more information:
stmichaelcp.org/divorce-support

You are not alone... join us!



WORLD WIDE MARRIAGE ENCOUNTER

Your wedding day was just the start of a life-long journey together. A Worldwide Marriage Encounter weekend will give you five proven tools to help you thrive as a couple as you navigate through the hills and valleys along the way. It is never too early, or too late, to investment in your marriage!

The next in-person weekends in the KC area is November 12-14; a virtual format is on December 3-5

For more info, visit www.wwme.org, or contact Deacon Tony & Barb Zimmerman at 816-741-4066 or tonybarbz@prodigy.net



Welcome to our Newly Baptized

Henry Thomas,
son of Andrew and Helen Hill
October 24

Madison Grace and Lucas Robert,
children of Brandon and Jennifer
McKinzie
October 24

CARE AND SUPPORT

BEREAVEMENT ROSARY

November 10, 12:00 p.m. in the church
(Second Wednesday of each month)

Fellowship/support following in the Gabriel Room (lower level of the church).

Are you grieving the loss of a loved one (recent or from the past)? You are not alone. Join us as we gather as a community to remember our loved ones, pray the rosary, and trust in our Blessed Mother's healing intercession.

If you have any questions contact Mary Connor, Care & Outreach Coordinator at 913-402-3920.

MANAGING GRIEF THROUGH THE HOLIDAYS

Sunday, Nov. 14, 6 - 7 p.m.

(following 5 p.m. Mass)

St. Michael Parish Hall

Speaker: Deacon Joe Allen, Chaplain at Catholic Community Hospice

Are you or your family grieving the death of a loved one or experiencing the pain of loss due to a broken relationship? Approaching the holiday season can often accentuate our feelings of grief and sadness. Our speaker Deacon Joe Allen, chaplain at Catholic Community Hospice will offer helpful suggestions and offer practical tools for coping with grief during the holidays. Questions? Please contact Mary Connor in the Parish Office at 913-402-3920 or mary.connor@stmichaelcp.org.



PRAY FOR OUR SICK PARISHIONERS

Garett Barraza

Paul Becker

Rosemary Bothwell

Chuck Brennan

Kevin Burlin

Mary Margaret Burke

Tom Dailey

Charles Elias Disney

Bob Foote

Alex Fraser

Mary Ann Gardner

Art Good

Dee Good

Marissa Guthrie

Robert Haaf

Roy Heilman

Linda Hopfinger

Suzanne Hopkins

Martha Horan

Jerry Huerter

Janet Klug

Kathy Komatz

Dana Knapp

Tami LeBlanc

Steve Lieneke

Terry Lynch

Danna Maloney

Pat Mareski

Ana Sofia Martin

Jim McKenna

Kathy McWherter

Rose Merchant

Finnegan O'Keefe

Marie Pham

Lucas Rafanan

Chuck Ramsey

Mark Reyes

Caleb Ritter

Carmela Scaduto

Pamela Schandler

Amanda Schlup

Patrick Schreiner

Michael Schweikert

Paul Sinclair

Presley Shelman

Nicholas Staber

Tony Torchia

Ursula Trent

Mike Van Hoecke

Amanda Wilkinson

Richard Wood

Linda Woods

Barbara Yurkovich

Barbara Zimmerman

PRAY FOR SICK FAMILY MEMBERS

Jim Alford, father of Emily Farwell

Kyle Anderson, son of Andy Anderson

Ken Babb, husband of Dawn Babb

Steve Basile, son-in-law Gregg & Suzy Svoboda

Dale Belshe, father of Sherrie Propeck

Michelle Berson, sister of Valerie LeBourveau

Mike Berry, father in law of Lisa Berry

Nickie Boltz, daughter of Paul and Mary Harvey

Patrick Cooney, brother of Carolyn Loew

Kevin Crawford, cousin of Maria Looney

Mary DesCombez, niece of Molly Mincher

Melissa Garcia, niece of Mary Harvey

Michael Gomez, father-in-law of Emily Gomez and grandfather of Georgie and Parker

Kathy Gregor, mother of Leslie Gregor

Bud Harvey, father of Noelle Caldwell

Quinn Keller, grandson of Anne & Michael Keller

Cynthia Katafiasz, sister of Annette Cundith & Kelly Gunderman

Ethan Larimer, great nephew of Patricia Eckhart

June Leon, mother of Liz Ernst

Cathe Leiber, mother in law of John Williams

Ann Loew, mother of Tom Loew

Joseph Ludwikoski, grandson of Stef & John Ludwikoski

Names are listed on a rotating basis, in alphabetical order in addition to those newly added each week.*

To have a family member added, please contact the Parish Office, 913-402-3900.

JOLLEY HOMES

KW KEY PARTNERS:
KELLERWILLIAMS

Suzu Jolley, Parishioner

Real Estate Agent • Renovation & Design Consultant
Let me put my expertise to work for you!
Committed to making your experience exceptional!

SuzuJolley.kw.com 913-219-1772 SuzuJolley@kw.com



Dr Mark D Gilroy, DDS, PA
Dr Joseph Geha, DDS, Parishioner

913-681-1900

11826 W 135th St

GilroyDentalCare.com

MAX CHRYSLER DODGE
JEEP RAM BELTON
BELTON, MO
(816) 331-4300

MAX PRE-OWNED
CENTER BELTON
BELTON, MO
(816) 331-4300

MAX FORD OF HARRISONVILLE
HARRISONVILLE, MO
(816) 380-3251

MAX COLLISION CENTER
HARRISONVILLE, MO
(816) 380-2126

MAX MOTORS



BOB JACAWAY | PARISHIONER
BOB@MAXMOTORS.COM
(816) 668-1818



Phone or Text: **913.685.0212**

15100 Metcalf Ave, Ste 101, Overland Park, KS

GregorEyeCare.com

Parishioner

**INSURANCE DESIGNED WITH
YOU AND YOUR DREAMS IN
MIND.**

CALL (816) 322-2828 TODAY TO SEE HOW I
CAN HELP PROTECT WHAT MATTERS MOST.



Nathan Ward, Agent
nathanwardagency.com
nward@amfam.com



American Family Mutual Insurance Company,
S.I. & its Operating Companies,
6000 American Parkway, Madison, WI 53783
©2015 008441 - Rev 2/20 - 12028755

Certified Agency in
Customer Excellence
Parishioner



Family Owned Since 1946
Tires • Alignments • Brakes • Shocks
93rd & I-35 913-541-9300

Knight Lighter

Christmas Lighting
Landscape Lighting

913-915-9787

DR. PAUL COWAN

MD, MPH, Orthopedic Surgeon

Fellowship trained in
Sports Medicine

Parishioner



ORTHOPEDIC HEALTH
of KANSAS CITY

Call 816-561-3003 to schedule your appt at
2 convenient locations

Shawnee Mission Advent and
Across from North Kansas City Hospital



Jaeger Flooring

Carpet | Wood | Luxury Vinyl | Area Rugs

913-269-7980

www.jaegerflooring.com

Rob Jaeger, Owner

Parishioner

The Genuine. The Original.



Overhead Door Company of Kansas City™
A **DSPACE** Company

REPAIR + REPLACE GARAGE
DOORS AND OPENERS
RESIDENTIAL DOORS

FREE ESTIMATES

913-361-6023
OverheadDoorKansasCity.com



SERVING KANSAS CITY **SINCE 1927**

M
MEYER FAMILY DENTISTRY



11021 HAUSER ST.
LENEXA, KS 66210
913-451-3400

PARISHIONER OF ST. MICHAEL THE ARCHANGEL

JERRY ILK
Master Electrician
Parishioner



With over 30 years of experience, we have the knowledge and skill to handle any electrical project.

New Additions • Basements • Remodels



MATTHEW T. KNEIDEL, MD., Parishioner
ORTHOPEDIC SURGERY
FOOT & ANKLE ORTHOPEDICS

913.642.0200

Clinics in Overland Park & Belton

APEX
ORTHOPEDICS
& SPORTS MEDICINE

www.APEXORTHOKC.com

**SWICKARD
CHIROPRACTIC CLINIC**

Bruce E. Swickard, D.C.
(913)-897-6717

Fax (913)-897-6795

15050 Antioch Road, Suite 102
Overland Park, KS 66221

Used Parts - Remanufactured Parts

U-Pull - Vehicle Sales - Vehicle Bids



816-241-0500

www.midwayauto.com



Auto, Home, Life & Business

INDEPENDENT INSURANCE AGENCY

(913) 904-1020

Marty Robbins, CPCU

Jolene Robbins, AAI, AIS, AINS

Insurance Advisors

www.aspireins.com

Parishioners



For ad info. call 1-800-950-9952 • www.4lpi.com

St. Michael the Archangel, Leawood, KS

D 4C 02-0467

**AVAILABLE FOR
A LIMITED TIME!**
ADVERTISE HERE NOW!

Contact **Doug Wolfe** to
place an ad today!
dwolfe@4LPi.com or
(800) 950-9952 x5833

MILLER TREE SERVICE

"WE REACH THE TALLEST TREES"
MIKE MILLER - Tree Surgeon
Fully Insured -
Workers Comp & Product Liability
Serving Johnson County &
Kansas City for over 30 years
Over 100,000 trees trimmed
913-262-6978
Mobile (913) 302-7999
FREE ESTIMATES

\$60 OFF
Any Job over \$900
(40 ft. minimum) with Coupon

\$45 OFF
Any Job over \$600
(40 ft. minimum) with Coupon

\$30 OFF
3 LARGE TREES
TRIMMED
(40 ft. minimum) with Coupon
Limit one coupon per customer

McCARTHY AUTO GROUP

www.KCCars.com



**A TRUSTED SOURCE FOR YOUR SALES,
SERVICE, COLLISION AND PARTS NEEDS
IN KANSAS CITY FOR OVER 36 YEARS.**

Dr. Joel LeMense DDS

8012 State Line Rd, Suite 100
Leawood, KS 913-341-3415

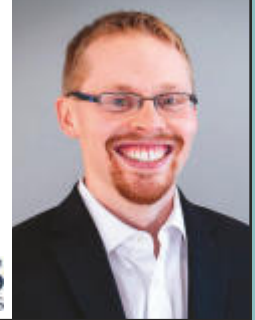


Family Dentistry
St. Michael's Parishioner

INVESTMENTS • FINANCIAL PLANNING

ERIK WITT

Financial Advisor
Parishioner
Candidate for CFP® Certification
erik@apsvllc.com
(913) 515-1592



apsvllc.com

**Holthaus
Building**

"Builder's Of Fine Homes"

913-681-0765



(913) 491-4900

11111 Nall Ave, Ste 109
Leawood, KS 66211

913-599-0055
Restoration General Contractor
FIRE • SMOKE • WATER
Mark Heinze & Pat Murphy • Parishioners



PILEGGI PAINTING

Exterior - Interior - Decks • Residential & Commercial
Frank Pileggi Parishioner/Owner
frank@pileggipainting.com

913-558-5204



Kevin P. Mays, M.D.

Board Certified Psychiatrist
Parishioner
8900 State Line Rd., Suite #380
Leawood, KS 66206
913-385-PAKC • Fax 913-385-2412



Gold Bridge
Treatment Center

Find Hope.
Find Recovery.
Find Yourself.

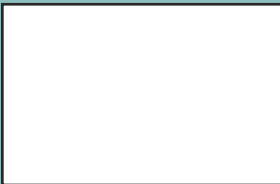
Highly individualized, comprehensive treatment
that meets your unique needs

Apartment-style residential drug and alcohol treatment
in Louisburg, KS.

Call us at 913-837-4653 or visit www.goldbridgetc.com

435 ROOFING
Made in KC
REROOFS
REPAIRS
INSPECTIONS
RESIDENTIAL
COMMERCIAL
Whitney Coulter, Parishioner
(913)444-0725
WWW.435ROOFING.COM

**LEAWOOD COMMONS
ENDODONTICS**
Practice Limited to Endodontics
Steven P. Gish, D.D.S., M.S., P.A.
Parishioner
11409 Ash, Suite A • Leawood, KS
(913) 491-5552 Fax (913) 491-4668



**Catholic Family
CREDIT UNION**
Full Service For All Your Needs
816-444-7440
9237 Ward Parkway, Ste 114
www.catholicfamilycu.com
Savings Insured by the NCUA up to \$250,000

WALK-IN CLINIC
for sports injury or fractures
M-F: 9am -11am, 1pm - 3pm. Ages 0 -16
**pediatric orthopaedic
surgery Associates**
5250 W. 94th Terrace, Prairie Village, KS 66207
913-451-0000
www.pedorthokc.com

**CALL ME TODAY FOR A
NO-OBLIGATION QUOTE!**

- Auto
- Life
- Home
- Business

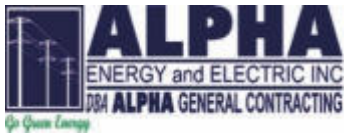
Bill Pikus
913.338.3300
BPikus@FARMERSAGENT.COM

**FARMERS
INSURANCE**

Vibrant Retirement Living
Call 1-800-989-0301 to request a free brochure.

Tallgrass Creek
Add more Living to your Life®
13800 Metcalf Avenue, Overland Park, KS 66223
TallgrassCreek.com

13918336



Alpha Energy and Electric, Inc. will serve all your electrical needs. Quality and Integrity is built into our work. At Alpha Energy, we endeavor to serve our clients with uncompromising level of excellence with integrity from planning to implementation.

OUR APPROACH:

Union Electricians, Knowledgeable and highly proficient technicians, Quick response time and Service done right the first time.



CALL US TODAY AT ANYTIME DAY OR NIGHT: Shawn Brown 816-986-8235 | Stephen Mugeche 913-424-0578



MORROW • WILLNAUER • CHURCH
LLC

Gary J. Willnauer

Providing civil, personal injury, and construction litigation in MO & KS

Office: **(816) 382-1382**

gwillnauer@mwcattorneys.com

Parishioner



KC's Leading Decking & Andersen Window Supplier

Kevin Owen
Parishioner

816-331-2211

OwenLumber.com

MEDICARE

I can help you save by explaining Medicare options



Call Ray
913.645.5740

rayfushimi@gmail.com

NO COST CONSULTATION

MARQUETTE PHYSICAL THERAPY

Trained in Graston Technique® & Dry Needling
Parishioner



2 Convenient Locations in Leawood and De Soto
www.marquettept.com
913.484.7632



Luke Henry, FICF

Field Agent

Cell: 913-568-6518 / Office: 913-884-3390
luke.henry@kofc.org
Council # 12932

Life Insurance • Long-Term Care Insurance
Retirement Annuities • Disability Income Insurance



ReeceNichols
REAL ESTATE

Liz Jaeger, Agent

MO-2016031716 KS-00237336
ReeceNichols - Leawood

913-221-4028



Parishioner



913-270-0710

Specializing in Eyelash Extensions

Parishioners / Owners
Sheila Commodore Renee Washburn
6435 W. 135th OPK (Corbin Park)

TOM FLETCHER PAINTING & REMODELING

FLETCHER
913-908-8766



Family and Cosmetic Dentistry

We enjoy seeing patients of all ages!
8631 W. 150th St., Suite 103
Overland Park, KS 66223
913-681-2893

Julie A. Tuttle, D.D.S. & David L. Tuttle, D.D.S., Parishioners

Land Escapes LLC
Design • Build • Maintain
913.638.1308
www.LandEscapesOP.com



COAST CREW

HOMES | LAND | RELOCATION

Larry and Marian Coast
St. Michael's Parishioners

coastcrew@kansascityhomes.com
www.coastcrew.com
O 913-661-6750 | C 913-244-1543



143rd & Metcalf Ave

Come check out Puffy Tacos on Tuesdays!

Like us on Facebook for a free Espinaca!



Financial Advisor
Office: 913.491.6226
Cell: 316.655.9136
Email: jharrish@pctawealth.com
pctawealth.com

Joe Harrish
Parishioner



KANSAS CITY HOMES



John Sweeney CCIM
Reece Commercial
Commercial Real Estate
(913) 945-3718 (913) 461-6326 mobile
John@ReeceCommercial.com
Parishioner
Brokerage Investment Development Consulting



- Customer Design Services
- Designer Jewelry
- Fine Swiss Watches
- Expert Jewelry & Watch Repair on Premises
- Estate Evaluation & Appraisal Services

Parkway Plaza | 135th & Roe
913.491.4111 | www.mazzarese.com



A Fresh and Polished Approach to Oral Health

4851 WEST 134TH STREET • LEAWOOD • KANSAS 66209-7803
913.681.8300 • WWW.JEFFTHOMPSONORTHO.COM

JEFFREY J. THOMPSON, D.D.S., M.S.
DIPLOMATE AMERICAN BOARD OF ORTHODONTICS



An Upscale Resale Clothing Store For Women

11610 W. 135th Street
Overland Park, KS 66221
913.239.0411

www.clothesmentor.com

Phyllis Lord - Owner/Parishioner



For ad info. call 1-800-950-9952 • www.4lpi.com

St. Michael the Archangel, Leawood, KS

B 4C 02-0467

Dr. Jay Oltjen, D.D.S., M.S.
 St. Michael's Parishioner
 A Board Certified Orthodontist by the American Board of Orthodontists
www.oltjenbraces.com
 913.829.8855 913-649-2055
 151st & Black Bob Olathe 135th & Nall Overland Park

WELLS FARGO ADVISORS



Joseph Pribula, CFP®
 Financial Advisor
 PIM Portfolio Manager
 Direct 913-901-1243
 Joseph.E.Pribula@wellsfargo.com

Investment and Insurance Products: ▶ NOT FDIC Insured ▶ NO Bank Guarantee ▶ MAY Lose Value

Wells Fargo Advisors is a trade name used by Wells Fargo Clearing Services, LLC, Member SIPC, a registered broker-dealer and non-bank affiliate of Wells Fargo & Company.
 ©2018 Wells Fargo Clearing Services, LLC. All rights reserved. 0918-0296274127-V4 A1695

EVEREST
 Wealth Management

- Financial Planning
- Investment Management

913.387.2017
 www.everestwealth.com

John D. Seitzer, CFP, CFA, CPA
 Parishioner • Owner

PROFESSIONAL INTEGRITY
 At Your Service



JAN MADSEN
 913-226-0278

PARISHIONER

ReeceNichols

janmadsen@reecenichols.com

MALACHY CONNOR
 LANDSCAPE & IRRIGATION



913-515-4166
 MALACHY@CONNORLANDSCAPING.COM

BERN WEINAND
 Attorney / Parishioner

BLACKWOOD, LANGWORTHY & TYSON, L.C.

Wills • Trusts • Corporate • Tax • Probate
 Civil Litigation • Real Estate

Telephone (816) 474-6200 / www.
 blackwoodlaw.com

LE Dance Studio

Birthday Parties • Recreational Classes • Competitive Classes

15244 Broadmoor • Overland Park, KS 66223
 913.897.5551 • website www.ledance.com

Liz Ernst, Owner & Parishioner



MB
 THE Mark Brewer Team
 TOP AGENTS | HALL OF FAME | LEAD GENERATION



MARK BREWER
 AGENT/PARISHIONER
 (913) 645-7646

LISTING SIDE COMMISSIONS STARTING AT 1%

TOP 1% METRO AGENT, FULL SERVICE, LESS COMMISSION... MAKES SENSE!
 www.MarkBrewerTeam.com

LEAWOOD
 Family Eye Care
 & Optical Boutique

Parishioners • Optometrists
 (913) 345-8020
 11305 Ash, Leawood KS 66211
 www.leawoodfamilyeyecare.com

Stephen Huber, DDS
 Excellence in Oral Health

Preventive & Restorative Dentistry
 (913) 469-8884
 13400 Roe Ave • Leawood, KS 66209
 www.stephenhuberdds.com
 Parishioner

FORMING MEN AT THE ROCK
 ROCKHURST HIGH SCHOOL

WWW.ROCKHURSTHS.EDU/ADMISSIONS

MCGILLEY
 MEMORIAL CHAPELS
 SINCE 1899

Kirk Kinsinger - General Manager
 Funeral • Cremation • Receptions • Celebrations
 "Celebrating Lives"

MCGILLEY STATE LINE CHAPEL
 12301 State Line Rd.,
 Kansas City, MO 64145
 816-942-6180
 WWW.MCGILLEYSTATELINECHAPEL.COM

SUPPORT OUR ADVERTISERS!

COMMUNITY MORTGAGE
 "Lending With Extraordinary Service"




ED BALDWIN
 Parishioner
 Sr. Loan Originator
 Specialize in NO PMI and NO COST loans as heard on 810 Sports Radio

Call or Text
 913-825-1999
 ed@edbaldwinhomeloans.com

NMLS 278436

URSO PAINTING & DESIGN
 Mike Urso, Owner & Parishioner
 913-915-4858 | murso@everestkc.net
 Interior Painting • Cabinet Refinishing • Decorative Painting



Contact me for all your Auto, Home, Rental and other insurance needs.

Martin Okpareke
 913-225-5653
 816-838-3875
 mokpareke@allstate.com

Allstate

MARK A. MAZZARESE
 MARK@MAMAZZARESE.COM
 By Appointment Only - Country Club Plaza

MAMAZZARESE
 Parishioner

TALL OAKS ADVISORS



Tom Cavaliere, MBA, CRPC
 Wealth Advisor, Parishioner

913.735.4246
 www.talloaksadvisors.com
 tom@talloaksadvisors.com

Your trusted wealth advisor

Securities offered through LPL Financial, Member FINRA/SIPC. Investment advice offered through Tall Oaks Advisors, a registered investment advisor and separate entity from LPL Financial