

# ST. MICHAEL THE ARCHANGEL

## CATHOLIC PARISH

*A Night of Healing Through Forgiveness*



Chuck Jansen, founder of the Forgiveness Institute, has been teaching "Forgiveness 101" for 12 years

Join us **April 10**, at **7 p.m.** in the **Parish Hall** for 90-minutes of inspiring, guided meditation that aims to help in letting go of wounds and moving on

Lenten Communal Penance Services begin  
Sunday, April 6

**Penance Service at St. Michael is  
Monday at 7 p.m. in the Church**

See p. 6 for the full schedule of Penance Services

April

6

2025

5th Sunday in  
of Lent

### Today's Readings

Ezekiel 37:12-14

Psalm 130:1-2, 3-4, 5-6, 7-8

Romans 8:8-11

John 11:1-45

### Mass on the Lord's Day

Sat: 5 p.m.

Sun: 7:30, 9, 10:30 a.m., &  
5 p.m.

### Daily Mass

M: 6:40 a.m.

Tu/W/F 6:40 & 8:15 a.m.

Th 6:40 a.m. & 5:30 p.m.

Sat: 8:15 a.m.

### Confession

Sat & Sun: 3:30 – 4:50 p.m.

Wed: 7:15 – 8:05 a.m.

Wed: 6-7 p.m.

First Sat: 7 – 8:05 a.m.

### Rosary

Sat 4:30 p.m. & Sun 7 a.m.

### Divine Mercy Devotion

Fri: 3 - 3:15 p.m.

### Pastoral Priorities

Deepening Spirituality | Evangelization | Strengthening Marriage & Family Life

[stmichaelcp.org](http://stmichaelcp.org) | 14251 Nall Ave, Leawood, Kansas 66223

# Welcome



**Pastor**  
**Fr. Brian Schieber**  
Frschieber  
@stmichaelcp.org  
913-402-3932



**Parochial Vicar**  
**Fr. Aaron Waldeck**  
frwaldeck  
@stmichaelcp.org  
913-402-3918



**Missionary Priest**  
**Fr. Ramesh Dara**  
FrRamesh  
@stmichaelcp.org  
785-713-9034

## PARISH CONTACTS



**Deacon Mark Stukel**  
deacon.mark@stmichaelcp.org  
913-402-3900



**Deacon John Weist**  
deacon.john@stmichaelcp.org  
913-402-3900



**Deacon Greg Trum**  
deacon.greg@stmichaelcp.org  
913-915-3944



**Deacon Gerard Palmieri**  
deacon.gerard@stmichaelcp.org  
913-402-3900



**Sr. Lucia, SCTJM**  
Campus Minister  
srlucia@stmichaelcp.org  
913-402-3942



**Sr. Monica Bernadette, SCTJM**  
Archdiocese Marriage & Family Life  
srmonica@piercedhearts.org



**Sr. Kelly Grace, SCTJM**  
Director of Religious Ed.  
srkelly@stmichaelcp.org  
913-402-3964



**Sr. Odilia-Thérèse, SCTJM**  
Director of Pastoral Care & Outreach  
srodilia@stmichaelcp.org  
913-402-3919

### Parish Manager

Rob Lisch 402-3907

### Communications & Safe Environment (Virtus)

Jessica Klein 402-3908

### Parish Office Manager

Denise Greene 402-3984

### Facilities Manager

Brian Rutledge 402-3938

### Accountants

Tom Spenceri 402-3933

Ann Ecklund 402-3910

### Principal

Diana Tate 402-3950

### School Office Manager

Molly Mincher 402-3950

### Preschool Director

Jennie Wentz 402-3971

### Discipleship

Nick Johnson (Director) 402-3921

### Youth Ministry

Allison Bednar 402-3945

Dominic Susanka 402-3912

### Parish Life & Membership

Desiree Greco 402-3969

### Worship & Sacred Arts

Kevin Vogt (Director) 402-3946

### Weddings & Liturgical Ministry

Janel Butler 402-3948

### Baptisms & Family Sacraments, Annulments

Shawna Davidson 402-3963

Staff emails are First.Last Name@stmichaelcp.org

## COLLECTION REPORT

### Donations 3/24/25 - 3/30/25

Tithing \$56,592

Charitable Assistance Fund \$100

Year-To-Date Donations 7/1/24 - 3/30/25 \$5,052,680

Fiscal Year Budget 7/1/24 - 6/30/25 \$6,349,285

### PARISH OFFICE

(913) 402-3900

Mon - Fri, 8 a.m. - 4 p.m.

### SCHOOL OFFICE

(913) 402-3950

### PRE-SCHOOL OFFICE

(913) 402-3970

### After-hours emergency (Rectory)

(913)-402-3980

## Mass Intentions: Mon Apr 7- Sun Apr 13

Mon	4/7	6:40	Adan Villarreal †
Tue	4/8	6:40	Layne Mays †
Tue	4/8	8:15	Laird Paul Simons †
Wed	4/9	6:40	Autumn Early †
Wed	4/9	8:15	Diane Stroh †
Thu	4/10	6:40	Parish Knights of Columbus in need
Thu	4/10	5:30	Elizabeth Hamerski
Fri	4/11	6:40	Lexi Sullivan
Fri	4/11	8:15	Group Intentions: Catlin Herigon Ravi & Elenor Talwar † Wilber Van Buren † Anne Ries Raimond Rizzi †
Sat	4/12	8:15	Rufus Turner †
Sat	4/12	5:00	Margaret L Hyland †
Sun	4/13	7:30	John Guzzetti †
Sun	4/13	9:00	Autumn Early †
Sun	4/13	10:30	Parish
Sun	4/13	5:00	Carolann † and Armand Moens

## PASTOR'S CORNER

This week kicks off our communal penance services throughout Johnson County. Confessions will be available Sunday, Monday, Tuesday, Wednesday, Thursday, Saturday, and again next Sunday. Our communal penance service at St. Michael will be Monday, April 7, at 7 p.m. We will have around 12 priests for confessions.

On a human level most of us put off doing things we really don't like to do. Perhaps we approach confession in this same vain. It's not easy to acknowledge our sins and to take responsibility for what we have done, let alone tell someone else all our failings. Furthermore, we have an enemy that loves to play on our weakness. The devil especially wants us to feel ashamed or embarrassed of our sins. The evil one knows the moment of grace and healing is when we are willing to bring our darkness to the Light of Christ.

Rather than approaching confession with trepidation, we should approach it with confidence in God's mercy. We hear in the gospel today that Jesus tells the woman caught in adultery, "Neither do I condemn you." Jesus has not come to condemn us but to save us. All he asks of us is to have a repentant heart and to express contrition for our past sins.

Jesus told St. Faustina, "It is in confession that I wait for you." We so easily focus on ourselves and our sins rather than approaching confession with our eyes on Christ and his Mercy. In each confession we encounter Jesus who truly touches our soul and heals us.

One of the reasons I like to go to confession is to truly know in my heart the peace of God's forgiveness. Jesus wants each of us to know the peace that flows from his mercy as we prepare for Easter.

## SPECIAL NEEDS MINISTRY

Info: [stmichaelcp.org/special-needs](http://stmichaelcp.org/special-needs)

## NEW MEMBER WELCOME

Welcome! Our priests want to meet all new or prospective parishioners. Attend New Member Welcome to learn about our parish and to register.

**New Member Welcome is the 1st and 3rd Sunday after 9 a.m. Mass** in the St. Raphael Room inside the Parish Hall.

For questions, contact Desiree Greco at 913-402-3969 or [desiree.greco@stmichaelcp.org](mailto:desiree.greco@stmichaelcp.org).



**Make a  
Donation to  
St. Michael**



## The Knights of Columbus Fish Fry 2025

Save the Dates!

**When:** Every Friday during Lent through April 11

**Time:** 4:45 - 6:45 p.m.

**Place:** Parish Hall



Come and enjoy all of your favorite Fish Fry dinner items:

The Knights' famous smoked salmon **and new smoked tilapia!**, fried tilapia, fried shrimp, mac-n-cheese, rice, vegetables, fries, cheese pizza, and dessert.

Did you know? Fish Fry proceeds help support Seminarians, Missionary Priests, and Pro-Life initiatives in the Archdiocese.

To go orders available.



## Night of Healing Through Forgiveness

What wound is renting space in your heart that needs to be evicted? What does that wound have to do with Forgiveness? Chuck Jansen, founder of the Forgiveness Institute, KC Inc. has been studying and teaching "Forgiveness 101" for the last 12 years. Join us **April 10, at 7 p.m. in the Parish Hall** for a 90-minute night full of inspiring, thought provoking, guided meditation that hopes to be contrite, empathetic, and pleading to the Divine for help in letting go of wounds and moving on. In this Jubilee year of hope, may we all take actions to seek freedom from the areas that have bound us.



## Wedding Banns

Aaron Babel and Julie Freijat | April 26, 2025

## Preschool Summer Camps

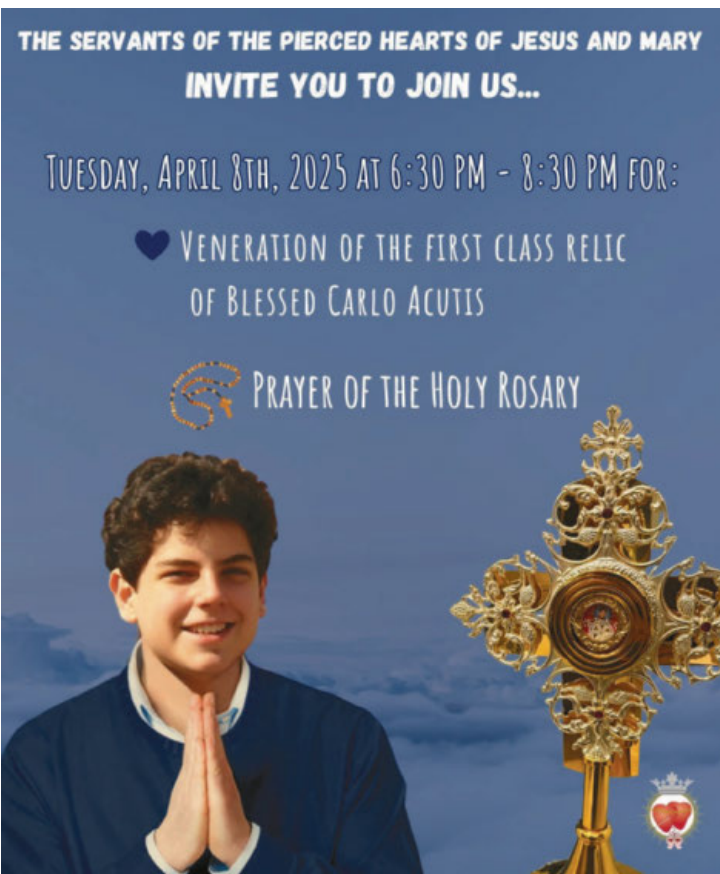
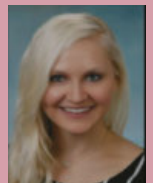
Preschool is offering a Bluey-themed camp June 2 to 5, from 9 a.m. to 1 p.m., and a Sweet Summertime-themed camp June 16 to 19, from 9 a.m. to 1 p.m. To register your preschooler (ages 3 to 5), contact Jennie Wente at 913-402-3970 or [jennie.wente@stmichaelcp.org](mailto:jennie.wente@stmichaelcp.org).



## Natural Family Planning Instruction

The Marquette method of NFP utilizes a fertility monitor to help a couple achieve or postpone pregnancy. Parishioner Molly Price is a board certified instructor of the Marquette Method. For more information, contact Molly at

[Mollypricefertility@gmail.com](mailto:Mollypricefertility@gmail.com)



## Spring 40 Days for Life

St. Michael is covering **one more** 12-hour day on the public right-of-way outside the Center For Women's Health abortion facility in Overland Park and we **NEED** your support. Sign up for one hour to walk the sidewalk and pray for the unborn and their mothers. Scan the QR code to register.



### April 13, Sunday:

7 a.m.– 4 p.m. — located on sidewalk along 4840 College Blvd, OP, KS

4-5 p.m. **Closing Rally**

Contact Carolyn Loew with questions: 319-430-3246

## Important! Virtus Background Check Updates Needed

All parishes in the Archdiocese are working towards getting all volunteers with a background check older than five years updated. Many of you have received an email requesting that you login to your Virtus account and complete the background check renewal. This will be a phased rollout at SMA, as we are blessed with hundreds of volunteers working with our youth and vulnerable adults.

**How you can help:** If you know it has been over five years since you completed a background check, login to your Virtus account at [virtusonline.org](http://virtusonline.org) from your computer and if you have a background prompt, complete it in one transaction, without hitting the back button. If you haven't received a prompt and know you need one, contact Safe Environment Coordinator Jessica Klein at [jessica.klein@stmichaelcp.org](mailto:jessica.klein@stmichaelcp.org) to get the process started.

Thank you to those who have already completed.

## Formation Series with Fr. Waldeck

As part of the Jubilee year, Pope Francis declared that we can earn an indulgence in studying Church documents, especially the Catechism. As we continue to seek the freedom of Hope in this Jubilee Year, Fr. Waldeck is offering a four-week series on the pillars of the Catechism from 7-8:30 p.m. in the Parish Hall, **April 9 and 16**. Topics focus on What we believe (the profession of faith), how we worship (the celebration of the Christian Mystery), how we live (life in Christ), and concludes with how we pray (Christian prayer).

You may attend any or all sessions.

## Live Stations of the Cross presented by Our Lady of Unity

Our Lady of Unity will host a Living Stations of the Cross on **Saturday, April 12, at 11 a.m.** beginning in the courtyard. If you or your children would like to be involved, please meet in the Parish Hall at 9:30 a.m. On Good Friday, OLU offers the Living Stations of the Cross in Spanish on the streets around St. John the Evangelist at 11 a.m.

## Easter Sunday Mass



**7:30 AM**

**9 AM**

**10:30 AM**

**12 PM**



April 27 after all morning Masses  
Parish Hall  
Join us for donuts, coffee & fellowship

## Mass of Atonement

Archbishop Naumann will offer the Archdiocesan Mass of Atonement for those harmed by sexual abuse in the Church. Mass will be at St. Michael the Archangel **April 11 at 4:30 p.m.** followed by a reception. Pray and support victim/survivors known and unknown, and learn more about this critical ministry.



# Lent Communal Penance Services

## **April 6 at 3 p.m.**

Curé of Ars  
QHR - OP  
St. Agnes

## **April 6 at 7 p.m.**

St. Paul - Spanish

## **April 7 at 7 p.m.**

**St. Michael**

Good Shepherd - Spanish  
Holy Trinity  
Holy Spirit

## **April 8 at 7 p.m.**

Holy Cross - Spanish  
Prince of Peace  
Ascension

## **April 10 at 7 p.m.**

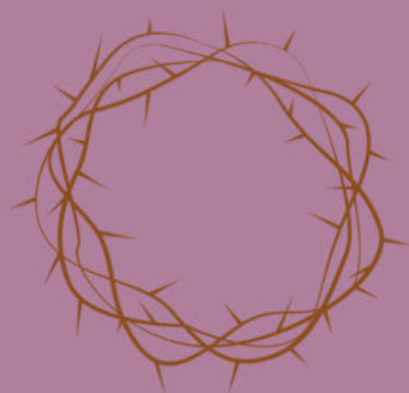
Divine Mercy  
Sacred Heart Shawnee  
St. Pius X  
St. Joseph

## **April 13 at 3 p.m.**

QHR - Wea  
St. Ann  
St. John Paul II

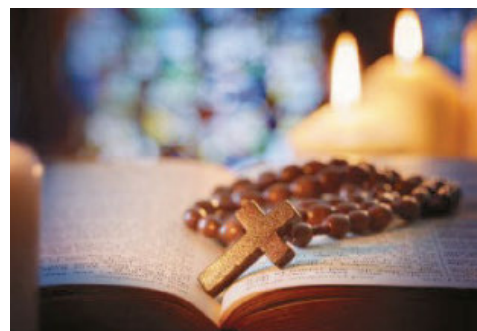
## **April 13 at 7 p.m.**

Nativity



## **Thank you**

The Knights of Columbus would like to thank parishioners for all the food and cash donations last weekend. We collected a full truck totaling 4,328 pounds of food for the Catholic Charities Food Pantry, along with several cash donations!



## **Bereavement Rosary**

Join us the 2<sup>nd</sup> Wednesday of every month at noon in the Church, as Sr. Odilia-Thérèse leads us in a guided meditation and rosary.



Calling all Women of St. Michael!

## **Mass & Dinner: Thursday, May 1st.**

Mass begins at 5:30 PM in the Church, dinner immediately following in the Parish Hall.

Cost: \$37 per person.  
Includes buffet-style dinner, wine, dessert and coffee.

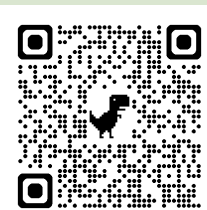
**RSVP by April 24.**

Scan the code or email [WomenOfSMA@gmail.com](mailto:WomenOfSMA@gmail.com)



## **Lenten Blood Drive**

Our quarterly blood drive is Monday, April 14, from noon-6 p.m. in the Parish Hall. Walk-ins are welcome or scan the QR code to register.

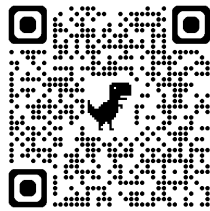


## Men's Annual Bring a Friend Welcome Breakfast

Join us **April 24**, at 7 a.m. after the 6:40 a.m. Mass in the Parish Hall for a men's group bring a friend breakfast. All men regardless of parish are invited. Fr. Waldeck and Dr. Troy Hinkel will present on Divine Mercy and evangelization. No cost for breakfast or event. Join us to see what it is like and bring friends to break bread and discuss Scripture. We all need an uplifting community. Don't miss this annual event; perfect for RCIA candidates and sponsors as well as all CRHP participants. Join us. We look forward to seeing you.

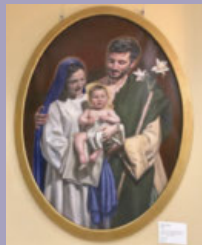
## Foster Care Summer Drive

May is Foster Care Month. Please consider making a foster care child's summer fun by donating to our summer drive. Items can be dropped off April 15- May 1, in designated bins inside St. Mary's Library. To sign up, scan QR code.



## Lower Narthex Gallery

The beautiful Sacred Art and other works of artist Brennan Kalis continues to be on display in our Lower Narthex Gallery through the end of April.



## Honduras Mission Trip: Change a Life, Change YOUR Life

We are looking for volunteers to join us on our next trip to Honduras, July 7-14, to complete our year-long celebration of the 20th anniversary of our parish mission in Honduras. Parishioners 18 and older are invited to consider spending this life-changing week with the nuns, girls, and elders who live and work at each home in Honduras. During this week, the team prays, plays, breaks bread, and works to build a spiritual, cultural, and charitable relationship in our efforts to bring hope and solace to each person we encounter. Cost is roughly \$1,500 (airfare plus a \$500 fee). Learn more at [stmichaelcp.org/honduras-mission](http://stmichaelcp.org/honduras-mission). Please contact Jane Rall at [jmroserall@gmail.com](mailto:jmroserall@gmail.com) if interested.



*Christ*  
RENEW'S HIS PARISH  
**MEN'S RETREAT**  
**MAY 3-4**

Use QR code to register

**Looking for Renewal with the Lord?**  
*Christ Renews His Parish (CRHP) begins with a spiritual Renewal Weekend design to help you grow in your relationship with Christ and form Christian Community. Retreatants come from varied backgrounds and different points in their faith journeys, creating a rich and extraordinary experience. The weekend entails small group activities, personal prayer time and reflections.*

Questions?  
Dcn Gerard, [deacon.gerard@stmichaelcp.org](mailto:deacon.gerard@stmichaelcp.org) [stmichaelcp.org/crhp](http://stmichaelcp.org/crhp)



Save the Date - Vacation Bible School

**VBS**  
**June 9-13**  
9am-Noon | 4yo-6th grade



Registration for kids and youth/adult volunteers opens April 6



## PRAYER CHAIN

Did you know that we have a group of parishioners committed to praying for your special intentions? The purpose of our prayer chain is to provide spiritual support through the power of intercessory prayer. To add your own prayer intention, fill out the online form at [stmichaelcp.org/prayer-chain](http://stmichaelcp.org/prayer-chain) or contact the parish office at 913-402-3900.



We have a parishioner who fixes broken rosaries...for free. If you have a broken rosary, you may bring it to the Parish Office to get it repaired or donate it for parts.

## PORNOGRAPHY OR STRUGGLES WITH LUST

Sam Meier, MA, LPC, provides counseling from a Catholic perspective. 913-952-2267  
[smeier.ma@gmail.com](mailto:smeier.ma@gmail.com)



Men: Join a community of brothers in discovering the keys to living porn-free with the STRIVE: 21-Day Porn Detox. Visit: [strive21.com/](http://strive21.com/)

Women: Magdala Ministries is a place of honesty, hope, and healing for women struggling with sexual addiction. Visit: [magdalaministries.org](http://magdalaministries.org)

## PRAY FOR OUR SICK

John Blando | Mickey Jones | George Larsen | Tim Nay | Tom Dailey  
Terry Lynch | Charles Elias Disney | Dennis Miller | Vincent Bonadonna  
Andrew Johnson | Jeff Stark | Caleb Ritter | Chris Basch | Jan Mathieu  
Gail Sturdevant | Heather Newman Fiorella | Kevin Fiorella | Pat Karns  
Katy Schweikert | Nicole Koehler | Roger Rahor | Martin Carolan  
Caroline Willits

*To have someone added, please contact the Parish Office at 913.402.3900.*

A Community Prayer for the Sick (Peregrine Devotion) is held every 4th Saturday following the 8:15 a.m. Mass

The Foster Care Ministry at St Michael the Archangel invites you to a

# FOSTER FAMILY

*Respite Night!*

This event is FREE for foster and adoptive families - children ages 3- 12 yrs.

Register Here!

<https://forms.gle/S616HvJCen7UJ2wc76>

In appreciation for all you do for your precious children, please drop off your children for a fun evening of crafts, snacks, and more. You will have an evening for a date night!

## Saturday, April 12, 2025

St. Michael the Archangel  
School Gym  
14251 Nall Ave, Leawood, KS 66223

Questions? Contact Maria Proctor 913.231.2547

- 530pm-Please drop your child/children for activities, games, snacks, books, and more!
- 8:30pm-Pick up
- Please register by April 4, 2025
- Enjoy your evening!

## School of Faith - Daily Rosary Podcast

[schooloffaith.com/daily-rosary-meditations](http://schooloffaith.com/daily-rosary-meditations)





Foundation Repair - Concrete Leveling  
Sump Pumps/Drainage Problems - Waterproofing  
Math Martin - Parishioner 913-549-7159

## Virtual Physical Therapy



- Stop "dealing with aches & pains"
- A flexible program fit to your goals and your schedule
- 24/7 access to a licensed Doctor of Physical Therapy



Schedule a FREE  
Consult Today

Justin Vann, PT, DPT, CSCS  
573-220-9684

@justinvann\_dpt



## Open Top Dumpsters!

Catholic Owned and Operated



- Residential and Commercial
- Construction + House + Yard Waste Cleanout
- Concrete and Dirt Recycling
- Long and Short term rentals

913-686-6499

www.Crowndumpster.com



10, 20, 30 and  
40 yard dumpsters!

SUPPORT OUR  
ADVERTISERS!

## IF YOU LIVE ALONE

MDMedAlert!™

STARTING AT  
**\$19<sup>95</sup>**  
/mo.

- ✓ Ambulance ✓ Police/Fire
- ✓ Family/Friends ✓ GPS & Fall Alert

CALL NOW! 800.809.3570 md-medalert.com



## DR. PAUL COWAN

MD, MPH, Orthopedic Surgeon  
Sports Medicine Specialist  
Parishioner  
816-561-3003



ORTHOPEDIC HEALTH  
of KANSAS CITY

Schedule an appointment or visit the Walk-In  
Orthopedic Urgent Care at either location:  
Adjacent to Shawnee Mission Advent and  
across from North Kansas City Hospital

## Steve Hodes, Jr.

St. Michael's parishioner

Call us:  
(913) 206-1974

For Free Estimate  
steve@allweatherdecks.net  
www.AllWeatherDecks.net



Decks, Covered Decks, Pergolas,  
Under Deck Ceilings, Patios



Air Conditioning · Heating · Plumbing



913-290-5292



CallThePatriot.com

READY TO SERVE!

**10%**  
DISCOUNT  
for PARISHIONERS  
\*Call & mention this ad.

The Genuine. The Original.



Overhead Door Company of Kansas City™  
A DSPACE Company



SERVING KANSAS CITY SINCE 1927

REPAIR + REPLACE GARAGE DOORS AND OPENERS  
RESIDENTIAL DOORS

FREE ESTIMATES • 816-320-5430

OverheadDoorKansasCity.com



11021 HAUSER ST.  
LENEXA, KS 66210  
913-451-3400

PARISHIONER OF ST. MICHAEL THE ARCHANGEL



Full Service For All Your Needs  
816-444-7440

9237 Ward Parkway, Ste 114

www.catholicfamilycu.com

Savings Insured by the NCUA up to \$250,000



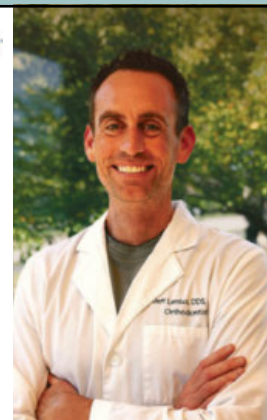
Dr. Jeffrey Lenius  
Parishioner



**LENIUS**  
ORTHODONTICS

913-357-1212  
(call or text)

8764 W151st Overland Park • LeniusOrtho.com



**10% OFF**  
ALL Hanging Services

### OUR SERVICES

- ✓ TV Mounting
- ✓ Art, Pictures, and Mirrors
- ✓ Light Fixtures and Chandeliers
- ✓ DIY Security
- ✓ Bike Racks and Garage Storage
- ✓ Holiday Lighting

If it goes  
on a  
ceiling  
or wall,  
give us  
a call



866-SET-HANG

SETHANG.COM



BOOK NOW

Parishioners Jerry and Dana Kolich

READY  
TO SET  
HANG



Auto, Home, Life & Business

INDEPENDENT INSURANCE AGENCY  
**(913) 904-1020**

Marty Robbins, CPCU

Jolene Robbins, AAI, AIS, AINS

Insurance Advisors

www.aspireins.com

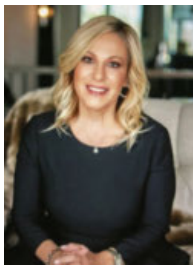
Parishioners



For ad info. call 1-800-950-9952 • www.4lpi.com

St. Michael the Archangel, Leawood, KS

D 4C 02-0467



**ReeceNichols**  
A BERKSHIRE HATHAWAY AFFILIATE

**Christine Black**  
Agent, CRNC

Cell: 913-485-8211  
Efax: 913-981-8952  
cblack@ReeceNichols.com  
Realtor Licensed in KS & MO

Parishioner



**LARSON**  
FINANCIAL  
SERVICES, INC.

**Steve Black**  
President

Office: 913-428-2233  
www.larsonfs.com  
Wealth Management Designed for you  
Three Generations spanning 25 years



Parishioner

WE APPRECIATE OUR  
ADVERTISERS!



Office: 913-722-6200

Cell: 913-269-7124

julie@juliestoll.com



**Julie Stoll**  
State Farm Agent



**ROOFING**  
Made in KC

**Whitney Coulter**  
Parishioner

(913)444-0725

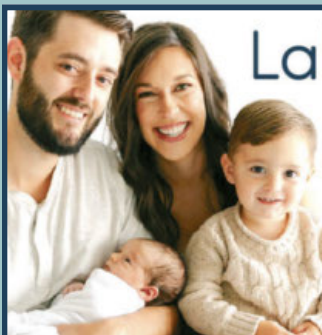
WWW.435ROOFING.COM

**Dr. Joel LeMense DDS**

8012 State Line Rd, Suite 100  
Leawood, KS 913-341-3415



Family and Cosmetic  
Dentistry  
St. Michael's Parishioner



**Lakeview**  
FAMILY DENTAL

Taking New  
Patients

Julianna Ervin, DDS.  
Parishioner

Lakeview Family Dental

7000 W 121st Suite # 200

Leawood, KS

Schedule an Appointment  
913-344-9990



Coverage for the life  
you want to live

- Auto Insurance
- Life Insurance
- Home Insurance
- Business Insurance

**Bill Pikus**  
Your Local Agent | License #9502426  
bpikus@farmersagent.com

Call 913-338-3300 today!  
For Home, Auto, and Business.



**URGENT CARE**  
AT HOME

In home evaluations and  
treatments helps you skip the  
wait and get the care you need,  
when and where you need it.

**Meghan Macy**  
FNP-BC, APRN, NE  
(816) 223-7638  
www.urgentcareathomekc.com



**PILEGGI PAINTING**

Exterior - Interior - Decks • Residential & Commercial

**Frank Pileggi** Parishioner/Owner  
frank@pileggipainting.com

913-558-5204

**Natural Nails & Spa**

2000+ gel dips colors

143rd & Metcalf 913-402-9501

Don and Mary Parishioners



**JERRY ILK**  
Master Electrician  
Parishioner

(913) 269-3601  
jradelectric@gmail.com  
New Additions • Basements • Remodels



FREE Estimates  
Licensed & Insured

**LEAWOOD COMMONS  
ENDODONTICS**

Practice Limited to Endodontics  
Steven P. Gish, D.D.S., M.S., P.A.  
Parishioner  
11409 Ash, Suite A • Leawood, KS  
(913) 491-5552 Fax (913) 491-4668

**Get Out  
There.**

Personal | Commercial | Land Lending

**OUTDOOR  
BANK**

Member FDIC | Equal Housing Lender  
Parishioner Owned  
www.outdoorbank.com  
7835 W 151st Street  
Overland Park, KS 6622



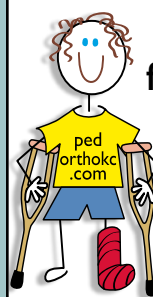
**FREE  
AD DESIGN**

with purchase  
of this space

CALL  
800-950-9952



**Bryan's  
Handyman  
Services**  
913-406-4109



**WALK-IN CLINIC**  
for sports injury or fractures

M-F: 9am - 11am, 1pm - 3pm. Ages 0 - 16

**pediatric orthopaedic  
surgery Associates**

5250 W. 94th Terrace, Prairie Village, KS 66207

**913-451-0000**

www.pedorthokc.com



**CATHOLIC  
COMMUNITY HEALTH**  
HOME CARE • VILLA ST. FRANCIS • HOSPICE



A **full continuum** of senior care.  
The **Catholic** way.



- In-Home care for those who need assistance
- Rehab-to-home, skilled nursing and Memory care at Villa St. Francis
- Kansas City's **Only Catholic Hospice**

CatholicCommunityHealth.org



For ad info. call 1-800-950-9952 • www.4lpi.com

St. Michael the Archangel, Leawood, KS

C 4C 02-0467





**MWC**  
MORROW • WILLNAUER • CHURCH  
LLC

**Gary J. Willnauer**  
Providing civil, personal injury, and  
construction litigation in MO & KS  
Office: (816) 382-1382  
gwillnauer@mwcattorneys.com  
Parishioner

**ADVANCE**  
CONCRETE SERVICES

**FREE ESTIMATES**  
**Do More With Concrete**  
Hire our concrete contractors for  
pouring services in OP/Mission/  
Gardner/Springs Hill

**913-927-5368**  
advanceconcretekc.com

**THE FAIRWAYS**  
**IRONHORSE**  
LUXURY SENIOR LIVING  
IN LEAWOOD

CALL 913-914-8272 TO  
ARRANGE A TOUR

**MARQUETTE**  
PHYSICAL THERAPY

- PTs trained in Graston Technique & Dry Needling
- We offer dry needling and shockwave therapy
- Treat all sports related injuries and post surgical conditions
- One-on-one care with licensed PTs

3 Convenient Locations in  
Leawood and De Soto  
www.marquettept.com  
913.484.7632

**Discover the Catholic Difference**  
Rely on the **Knights of Columbus** to help protect your family's future.

*A name you know and trust.  
An organization you can believe in.*

Contact me today to learn  
more about our products  
**Luke Henry, CLTC, FSCP, RICP, CLU**  
Assistant General Agent  
913-246-3508  
luke.henry@kofc.org

© Knights of Columbus, 1 Columbus Plaza, New Haven CT 06510

LIFE INSURANCE • DISABILITY INCOME INSURANCE • LONG-TERM CARE INSURANCE • RETIREMENT ANNUITIES

TECHNOLOGY STRATEGY & CONSULTING

**SACRUM COR**

... /OTO ON-DEMAND

**GREGOR EYE CARE**

Phone or Text: **913.685.0212** f t p in

15100 Metcalf Ave, Ste 101, Overland Park, KS  
**GregorEyeCare.com** Parishioner

**Tuttle Family Dentistry**

**Family and Cosmetic Dentistry**  
We enjoy seeing patients of all ages!  
8631 W. 150th St., Suite 103  
Overland Park, KS 66223  
913-681-2893

Julie A. Tuttle, D.D.S. & David L. Tuttle, D.D.S., Parishioners

1 Timothy 6:18 - "Tell them (the rich) to do good, to be rich in good works, to be generous, ready to share, thus accumulating as treasure a good foundation for the future, so as to win the life that is true life"

**Curtis Yohon, CFP®**  
Founder and Parishioner  
**913-239-8288**  
7410 W 145th Terrace  
Overland Park, KS 66223

**THE ADVOCATES**  
Wealth Management

Learn more about our Faith-Centered approach

Securities and advisory services offered through Commonwealth Financial Network®, Member FINRA/SIPC, a Registered Investment Adviser.

**ODYSSEY PAINTING**  
EST. 2001

Spring savings!  
11% OFF wood rot repair services

913-393-3934 www.odysseypainting.com

Exterior/Interior Painting - Home/Deck/Fence Repair - Exterior Door/Garage Door Replacement

*Santa Marta*

**Johnson County's Premier Life Care Community**

Sponsored by the Archdiocese of Kansas City in Kansas

**DAILY MASS**

SantaMartaRetirement.com • (913) 399-3212

**Better Homes and Gardens REAL ESTATE**

**KANSAS CITY HOMES**

**Larry & Marian Coast**  
Parish parishioners

coastcrew.com  
913-661-6701 Office  
913-850-2436 Marian  
coastcrew@kansascityhomes.com

**COAST CREW**  
HOMES | LAND | RELOCATION

Your dedicated Realtors, making every move a smooth transition for your family!

**INTELLEGO IIP INVESTMENT PARTNERS**

**Joseph E. Pribula**  
Managing Partner  
Financial Advisor  
joe@iipkc.com | Direct 913.800.2802  
4000 W 114th St Ste 180  
Leawood, KS 66211  
Office 913.800.2810 | Text 913.914.9078  
Fax 913.800.2809  
www.iipkc.com

Investment products and services are offered through Wells Fargo Advisors Financial Network, LLC (WFAFN), member SIPC. Any other referenced entity is separate from WFAFN.

**SHORT STAFFED?**  
Place an ad here to find new local talent for your business.

**CALL 800-950-9952**

**JEFF THOMPSON ORTHODONTICS**

*A Fresh and Polished Approach to Oral Health*

4851 WEST 134TH STREET • LEAWOOD • KANSAS 66209-7803  
913.681.8300 • WWW.JEFFTHOMPSONORTHO.COM

**JEFFREY J. THOMPSON, D.D.S., M.S.**  
DIPLOMATE AMERICAN BOARD OF ORTHODONTICS

**Dr. Jay Oltjen, D.D.S., M.S.**  
St. Michael's Parishioner  
A Board Certified Orthodontist by the American Board of Orthodontists  
**www.oltjenbraces.com**  
913.829.8855 913.649-2055  
151st & Black Bob Olathe 135th & Nall Overland Park

**KW KANSAS CITY**  
KELLER WILLIAMS 913.825.7500  
*Luxury*  
**SUZY JOLLEY**  
REALTOR® & PARISHIONER  
Licensed in Kansas & Missouri  
913.219.1772  
suzy@jolleyhomes.com  
jolleyhomes.com  
4200 Somerset Dr. Ste. 101, Prairie Village, KS 66208 | Each office independently owned and operated.

**EVEREST**  
Wealth Management  
♦ 913.387.2017  
♦ everestwealth.com  
**John Seitzer**  
CFP, CFA, CPA  
Parishioner ♦ Owner

**PROFESSIONAL INTEGRITY**  
AT YOUR SERVICE  
**JAN MADSEN**  
913-226-0278  
PARISHIONER  
ReeceNichols  
janmadsen@reecenichols.com

**MALACHY CONNOR**  
DESIGN & LANDSCAPE  
**Landscape Design & Installation**  
Let me design your dream landscape now!  
Book now  
913-515-4166  
MALACHY@CONNORLANDSCAPING.COM

**SWICKARD CHIROPRACTIC CLINIC**  
Bruce E. Swickard, D.C.  
Nicholas J. Swickard, D.C.  
(913)-897-6717  
15050 Antioch Road, Suite 102  
Overland Park, KS 66221

**MATTHEW T. KNEIDEL, MD**  
Parishioner  
Fellowship Trained Foot & Ankle Specialist  
Orthopedic Surgery • Overland Park  
**www.kcorthoalliance.com • (913) 642-0200**



**BERN WEINAND**  
Attorney / Parishioner  
**BLACKWOOD, LANGWORTHY & TYSON, L.C.**  
Wills • Trusts • Corporate • Tax • Probate  
Civil Litigation • Real Estate  
Telephone (816) 474-6200 / **www.blackwoodlaw.com**

**ReeceNichols**  
REAL ESTATE  
**Liz Jaeger**  
Senior Partner  
The Portfolio  
ReeceNichols  
Leawood  
MO-2016031716  
KS-00237336  
Parishioner 913-221-4028

**Brain Balance®**  
Overland Park | Kansas City N  
Poor Focus | Learning & Sensory Issues | Anxiety | Behavior  
Improve the Foundation of Development  
Customized Programs  
Measured Outcomes  
Ages 4 & up  
6414 College Blvd, Overland Park | 8602 N Dixon Ave, Kansas City | (913) 627-9400  
Ann & Jim Cahill, Holy Spirit parishioners

**MCGILLEY**  
MEMORIAL CHAPELS  
SINCE 1899  
Kirk Kinsinger - General Manager  
Funeral - Cremation - Receptions - Celebrations  
"Celebrating Lives"  
MCGILLEY STATE LINE CHAPEL  
12301 State Line Rd.,  
Kansas City, MO 64145  
816-942-6180  
WWW.MCGILLEYSTATELINECHAPEL.COM

**CIMINIERI DENTAL**  
(913) 491-4900  
11111 Nall Ave, Ste 109  
Leawood, KS 66211

**Vibrant Senior Living**  
in All Seasons  
Get your **FREE** brochure!  
Call 1-800-417-9472 or  
visit **TallgrassCreek.com**.

**SUPPORT OUR PARISH**  
Local business ads  
sponsor the printing of  
our bulletin.  
**4lpi.com/adcreator**

**learn. grow. soar.**  
**FORMING MEN AT THE ROCK**  
ROCKHURST HIGH SCHOOL  
WWW.ROCKHURSTHS.EDU/ADMISSIONS

**Owen LUMBER CO.**  
KC's Leading Decking & Andersen Window Supplier  
Kevin Owen  
Parishioner  
816-331-2211 OwenLumber.com

**Jose Pepper's**  
TexMex...Made Fresh!  
143rd & Metcalf Ave  
Come check out Puffy Tacos on Tuesdays!  
Like us on Facebook for a free Espinaca!

**mazzarese**  
4850 W. 135TH ST.  
LEAWOOD, KS 66224  
913.491.4111  
WWW.MAZZARESE.COM  
IN-HOUSE REPAIR & JEWELRY APPRAISALS  
HOUSE CURATED FINE JEWELRY  
DESIGNER TIMEPIECES  
NEW & PRE-LOVED HANDBAGS

**Design Services**  
Paint Selection, Room Design, Art & Accessory Placement, Furniture, Flooring, Window Coverings  
37 Years Experience, Hourly Consults  
**Mary Van Becelaere** 913.304.4440  
marykvanb@gmail.com

**Christian Brothers Automotive**  
913-764-3360  
13770 W 135th St.  
cbac.com/olathe | Catholic Owned  
Mention SAINT receive 10% Off

**Stephen Huber, DDS**  
Excellence in Oral Health  
Preventive & Restorative Dentistry  
(913) 469-8884  
13400 Roe Ave • Leawood, KS 66209  
**www.stephenhuberdds.com**  
Parishioner