



Prince of Peace

CATHOLIC CHURCH

May 22, 2022 ✦ 6th Sunday of Easter

*Visit the Parish Website
popolathe.org:*

For parish resources, current schedules, and
ACCESS to Facebook Live-Stream and our
YouTube Channel

Parish Office Hours:

Monday - Friday 8:00AM to 4:00PM
(Summer Office Schedule begins June 3)
913-782-8864 | www.popolathe.org

Mass Schedule:

Daily Mass

Monday-Friday: 6:15AM & 8:15AM

Saturday: 8:15AM

Saturday Vigil: 5PM

Sunday: 7:30AM, 9AM (LIVESTREAM),
11AM & 5PM

NOTE:

For BOTH Daily and Weekend Masses the
PEW section on the far left side of the
Church maintains COVID safety Mask &
Social Distancing protocols.

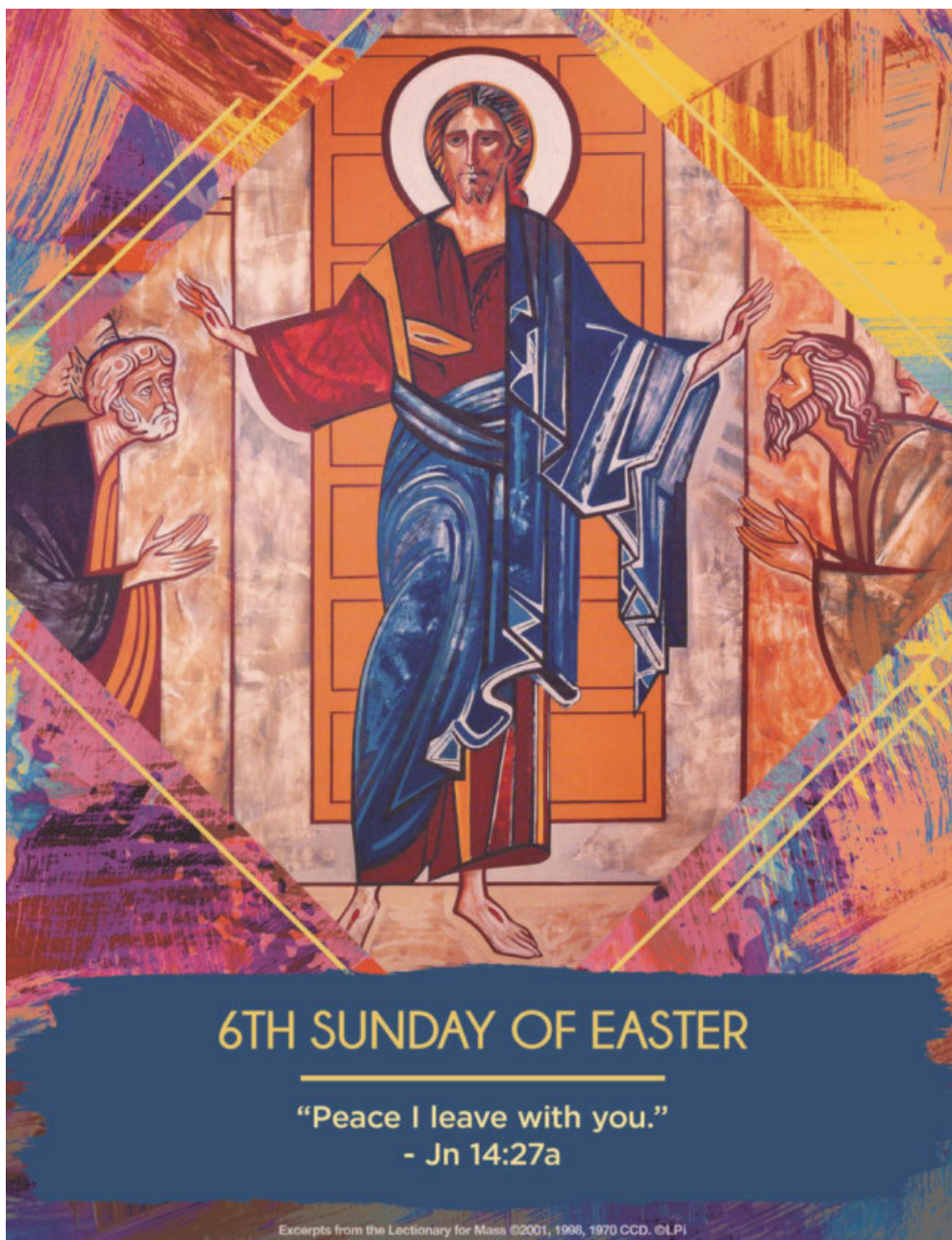
Reconciliation:

Wednesdays, 12-1PM

Saturdays, 3:30-4:30PM

First Saturday of the month, 9-10AM

WEBSITE CONTENT CHANGES & UPDATES DAILY
BULLETIN CONTENT AS OF MAY 18, 2022



6TH SUNDAY OF EASTER

"Peace I leave with you."
- Jn 14:27a

Excerpts from the Lectionary for Mass ©2001, 1998, 1970 CCD. ©LPI

16000 WEST 143RD ST., OLATHE, KANSAS 66062 | PARISH OFFICE: 913-782-8864 | POPOLATHE.ORG
CHRISTIAN FORMATION OFFICE: 913-829-1147 | SCHOOL OFFICE: 913-764-0650 | EEC OFFICE: 913-829-2728



Did you hear the news? If not, here is the latest for Prince of Peace.

First, we will be saying farewell to Fr. Kenn Clem who has been the parochial vicar (associate pastor) here for the past three years.

Fr. Kenn has been given a new assignment, to be pastor of Sacred Heart Ottawa, KS. I've so enjoyed having Fr. Kenn here, and I am

grateful for all his service. He will be missed! Let us pray for him as he transitions to Ottawa. His new assignment begins July 1st, so we have a few more weeks with him, and we are organizing a celebration for his last weekend here—June 25/26—so more to come.

The follow-up question then is who is coming to replace Fr. Kenn. I have an answer! Fr. Andrew Gaffney is coming. He is to be ordained a priest on Saturday, May 28th at the Cathedral of St. Peter—Kansas City, KS. He will have a double assignment, to be associate pastor here at POP and also the chaplain at St. Thomas Aquinas High School, so he will be extra busy. Fr. Andrew will be joining us July 1st. More to come on introducing him to the parish, but I am excited to welcome him.

Moving down the hierarchy, we also welcome a new permanent deacon to POP, Deacon Dan Ondracek. He recently moved to Olathe from Topeka, KS and has offered his service here. Deacon Dan has a bio below. Again, I am excited to have him here—there is always plenty to do and never enough laborers for the harvest!

In addition, we will have a seminarian, Benjamin Reinhart, soon joining us to do a pastoral year here at Prince of Peace. Benjamin

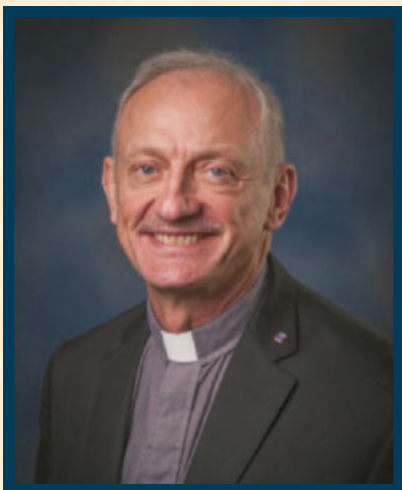
has two more years (post being with us) till he would be ordained a priest. We hope to provide a great parish life experience. And you can guess it...I'm excited to have him and he will be a big help here! We will have a better introduction of him published in the next few weeks.

Finally, starting July 1, we will also be welcoming a new staff member, April Bailey, as our new Director of Religious Education & Children's Ministry. April comes to us with a BA in Religious Studies from Benedictine College and a Masters degree in Teaching Curriculum and Instruction, along with 10 years of teaching theology at St. Thomas Aquinas High School, 10 years of leadership at Camp Tekakwitha, and 3 years of DRE experience for the Diocese of Wheeling-Charleston VA, and experience with the Evangelization Office for our Archdiocese, along with many other experiences. April is already a parishioner of Prince of Peace and has volunteered here especially with the RCIA. April will directly lead our School of Religion program, Sacrament preparation for First Penance and Holy Communion, and give some oversight for all our religious formation programming. Can you tell I'm also very excited to welcome April? *Amen!* Current staff, Shannon Cardaronella (Director of Children's Ministry) will move to be our Director of Adult Faith Formation, and Larissa Smith (Director of Adult Faith Formation & Evangelization) will move to be our Director of Parish Life and Evangelization. All of this means, we should be equipped to do more for ministry here at POP.

In conclusion, we have exciting news, lots for which to be grateful, and need to pray for many transitions! May the Lord continue to bless us and be with us in all we do!

Peace,

Fr. Greg



Deacon Dan Ondracek

- ◆ *Born and raised in Nebraska*
- ◆ *Married to Carol for 34 years*
- ◆ *Twin sons, Ryan and Alex*
- ◆ *Ryan has special needs, Alex is a physician, married to Allison who gave us our first grandchild last year, Olivia*
- ◆ *Carol is a retired social worker and I am a retired nurse anesthetist*
- ◆ *Ordained a permanent deacon April 2011 by Archbishop Naumann*
- ◆ *My first deacon assignment was at Most Pure Heart of Mary parish in Topeka*
- ◆ *My hobbies are gardening, reading, and being a social butterfly like Fr. Francis*
- ◆ *My educational influences are Benedictine and Jesuit, whose principles have guided much of my life*

Prince of Peace this Week

Welcome

THANK YOU FOR JOINING US

I'M NEW

If you are new to our parish *WELCOME, we're glad you are here!* Please contact the Parish Office at 913-782-8864 to learn more about our Parish and to formally register. You may also fill out registration information online, at popolathe.org/parish-registration-information.



Lord our God, in your wisdom and love
you surround us with the mysteries of the universe.

Send your Spirit upon these students and fill them with
your wisdom and blessings.

Grant that they may devote themselves to their studies
and draw ever closer to you, the source of all knowledge.

We ask this through Christ our Lord. *Amen.*

PARISH EMERGENCY FUND

In your May envelope packet, you will find an envelope specifically marked, "Prince of Peace Emergency Fund". This important fund assists parish families in need and other emergencies. This donation envelope may be placed in the offertory basket at Mass, or make an online donation today, at popolathe.weshareonline.org. ***Please be generous!***

STEWARDSHIP OF TREASURE

Fiscal Year July 1, 2021-June 30, 2022

	Week of 5/15/2022	Year-to-Date
Envelopes	14,438	922,943
Electronic Giving	15,329	1,169,149
Plate Cash	1,126	63,476
Children's Giving	12	466
TOTAL	30,905	2,156,035
Income Over / (Under) Budget		252,947

Assessment, <i>Priesthood: Past, Present & Future</i>	3,077
Second Collection, <i>Parish Emergency Fund</i>	1,980
Second Collection, <i>Catholic Communications</i>	1,049



Support for Priests & Seminarians

Priesthood: Past, Present & Future is an annual assessment to the parish by the Archdiocese. It is designed to provide for the education and formation of seminarians, advanced studies and continuing education for priests and it also supports the Priest Retirement Fund.

This special collection assists the parish in meeting its obligation to this Archdiocesan assessment of \$66,698.

DONATIONS TO DATE: \$3,077 | 5% OF GOAL

We thank you for your generosity!

The envelope for this collection is available in your May envelope packet; or make your online donation today, at popolathe.weshareonline.org.

Remember our seminarians and priests, in your prayers!

PARKING LOT MAINTAINANCE IS GETTING STARTED

On Monday, May 23, work on sidewalks and curbing is scheduled to begin. Work will consist of replacing the crumbling concrete panels/curbs. A significant area to address will be in front of the Gym entrance and the sidewalk going to the breezeway. Along with the concrete replacement, the parking lot cracks will be filled. The specific timing for the parking lot crack fill will be done when there is limited traffic.

Our Community in Prayer

Join us as we Welcome and Celebrate,

New Members of the Parish:

Kyle & Nicole Brown and family
Elizabeth Garvey and family
Erik Glowark & Terra Agaki-Glowark
Kelsey Harrington
Geraldine Krumsick
Andrew & Erin Lichter and family
Lawrence & Katherine Loeffler and family
Sam & Cassey Todd and family

The Sacrament of Baptism:

Mackenzie Rose Dorathy, child of Michael & Rachell
Annie Joy Kaul, child of Philip & Amber
Sawyer Austen Lee, child of Andrew & Rebecca
Adeline Ruth Sharp, child of Randall & Amanda
Oliver Ralph Sharp, child of Randall & Amanda

The Sacrament of Marriage:

Yuri Regondola and Ashley Covarrubias

(as of April 2022)

Readings for the Week

Sunday: Acts 15:1-2, 22-29/Ps 67:2-3, 5, 6, 8 [4]/Rv 21:10-14, 22-23/
Jn 14:23-29
Monday: Acts 16:11-15/Ps 149:1b-2, 3-4, 5-6a and 9b/Jn 15:26—16:4a
Tuesday: Acts 16:22-34/Ps 138:1-2ab, 2cde-3, 7c-8/Jn 16:5-11
Wednesday: Acts 17:15, 22—18:1/Ps 148:1-2, 11-12, 13, 14/Jn 16:12-15
Thursday: Acts 18:1-8/Ps 98:1, 2-3ab, 3cd-4/ Jn 16:16-20
Ascension: Acts 1:1-11/Ps 47:2-3, 6-7, 8-9 [6]/Eph 1:17-23
or Heb 9:24-28; 10:19-23/Lk 24:46-53
Friday: Acts 18:9-18/ /Ps 47:2-3, 4-5, 6-7/Jn 16:20-23
Saturday: Acts 18:23-28/ Ps 47:2-3, 8-9, 10/Jn 16:23b-28
Next Sunday: Ascension: Acts 1:1-11/ Ps 47:2-3, 6-7, 8-9 [6]/Eph 1:17-23
or Heb 9:24-28; 10:19-23/Lk 24:46-53
Seventh Sunday of Easter: Acts 7:55-60/Ps 97:1-2, 6-7, 9 [1a,
9a]/Rv 22:12-14, 16-17, 20/Jn 17:20-26



First
Saturday
Confessions

FIRST
SATURDAY
OF THE MONTH

9-10 AM

(AFTER
8:15 MASS)



**AFRICAN CATHOLIC
COMMUNITY OF KANSAS
(ACCK)**

PLEASE JOIN US IN A MULTICULTURAL
CELEBRATION OF THE HOLY MASS

PRINCE OF PEACE CATHOLIC PARISH
16000 WEST 143RD STREET
OLATHE KS 66062

**EVERY FIRST SUNDAY
OF THE MONTH**

@ 1:00PM



Our Community in Prayer

IN MEMORIAM

We pray for the souls of the faithful departed:

*Richard Poettgen, father of Denise Ketelle
Crystal Riedler, niece of Mark & Rita Riedler*

WEEKLY MASS INTENTIONS:

Monday, May 23

6:15AM Sick & Suffering of the Parish
8:15AM † Tom Kirby

Tuesday, May 24

6:15AM *Collective Mass:*
† Urban Kirsch
† Paul Cummings
† Richard Brock
8:15AM Intentions, Dixie Mitchell

Wednesday, May 25

6:15AM Intentions, Fr. Kenn Clem
8:15AM Intentions, Patsy & Ron Casassa

Thursday, May 26

6:15AM Intentions, Fr. Greg Hammes
8:15AM Intentions, Patsy & Ron Casassa

Friday, May 27

6:15AM † Mary Jane Zaccone
8:15AM † Don Boos

Saturday, May 28

8:15AM † Ray Etzel
5:00PM † Dennis JoRay

Sunday, May 29

7:30AM † Clara Benafield
9:00AM People of the Parish
11:00AM † Jose Perez
5:00PM † Tommy Negrete

PRAY FOR PARISHIONERS WHO ARE SICK:

Bruce Banks	Karen Foster	Donna Reeves
Ron & Eleanore Basgall	Scott Green	Mark Riedler
Pauline Baughman	Tom Hult	Dee Ruffalo
Kay Beck	Melissa Jakmouj	Ruszczak Family
Angela Bolduc	Dorothy Kapsch	Jerry Saale
Joanne Ciaravino	Yvonne Kehoe-Meier	Don & Elaine Schrick
Lillian Cornell	Judy Malnar	Dennis Shaffer
Christine Edmunds	Joseph & Kathy Mangino	Dcn. Chris Slater
Mike Eisele	Clarice Martini	Nicole Storey
Alice Fields	Rhonda Moffatt	Nick Vallejo
Brian Finn	Bill & Sandra Moonan	Roy & Hazel White
Ed Ford, Sr.	Cathy O'Rourke	Darlene Williams

For privacy reasons, the parishioner or an immediate family member of the parishioner, must contact us for their name to be added to the sick list.

*Let us keep in prayer our Men and Women serving in,
or retired from our Armed Forces.*

Notes on the Liturgy

Melissa Jakmouj, Director of Music & Liturgy
Reflection on the 6th Sunday of Easter

In today's Gospel we hear Jesus telling us that He will be sending the Holy Spirit to be with us, and the ideal to love one another comes up again. We begin our Masses singing, "Love Divine, All Loves Excelling" which speaks of this unending, perfect love of Christ as He is the 'source of all compassion, love unbounded, love all pure.'

At the presentation of the gifts, we sing of how through Christ's teachings, He has brought us life everlasting. We need to follow His commands; live as He has taught us; follow His words that will lead us to eternal life.

Our Communion song "Where Charity and Love Prevail", speaks more on the love theme that we've heard about these past two weeks. How do we love one another? Serve one another. Through charity, forgiving one another, and being at peace.

We conclude our Mass by singing "With One Voice". The message here sends us out to serve one another, spreading the Gospel, touching the lives of those around us. Go out this week and "shine the light of Christ for all to see" as the song proclaims!

Rosary Group

WEDNESDAYS AT 7 PM
IN THE CHURCH

Bring your rosary and join fellow
parishioners for prayer!
Questions? Contact Rollene Croucher
(rcroucher@kcwk.com or 913.963.5342)



CATHOLIC COUNSELORS

If you or someone you know is struggling with depression, anxiety, or other concerns, *know that YOU are not alone!*

We encourage you to reach out to a Catholic Counselor listed by the Archdiocese of Kansas City in Kansas.

VISIT: ARCHKCK.ORG/FAMILY/CARE-SUPPORT/CATHOLIC-COUNSELORS/



2022 Totus Tuus for People with Special Needs and Siblings

HERE ARE THE DETAILS:

Monday July 25th to
Friday July 29th
10:00 am to 2:00 pm

Prince of Peace
16000 W. 143rd St
Olathe, KS 66062

Fee is \$40 per person
or \$60 per family.

Enrollment is limited.

Registration deadline is
Monday July 11th.

Totus Tuus Teams

will offer an adapted Totus Tuus program
for people with special needs!

This Program is for persons ages 6 to adult with intellec-
tual/developmental disabilities.

SIBLINGS ARE WELCOME!

PROGRAM VOLUNTEERS NEEDED

For more information, please contact the
Office of Special Needs Ministry at
jruoff@archkck.org or call 913-647-3054

TO REGISTER VISIT:
WWW.ARCHKCK.ORG/SPECIAL-NEEDS

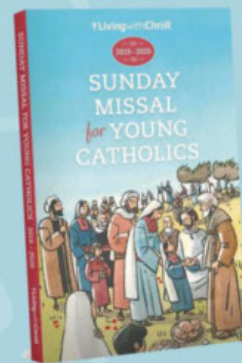


High school freshmen through graduated seniors are in-
vited to attend our weekly youth event 'Pyro' on Sunday
evenings from 6-8PM in the Youth Room. Join us for
dinner followed by faith, fun, and fellowship. *Incoming
freshman are welcome to start attending this summer.*



Dinner Donations – we are looking
for volunteers to help provide
donations for our weekly dinners.
SCAN the QR Code or VISIT pop-
olathe.org/pyro to find out more.

For more information please contact
Megan Miguel, at 913-747-7744 or
mmiguel@popolathe.org.



Children's Missal Pre-Order

Pre-order available until July 15
\$7 per subscription

ORDER AT
POPOLATHE.ORG/MAGNIFIKID-AND-CHILDRENS-MISSAL

TAKE THE NEXT STEP IN YOUR FAITH JOURNEY

INTERESTED IN
THE CATHOLIC FAITH?
JOIN US FOR A
SUMMER SESSION!

JUNE 9
JUNE 23
JULY 14
JULY 28

6:30-7:30 PM

CONTACT LARISSA SMITH
913-747-7746 OR
LSMITH@POPOLATHE.ORG
FOR MORE DETAILS.



TECHNOLOGY AT POP!

At Prince of Peace Catholic School, Technology is so much more than computers! Students work with computers, ipads and Chrome Books to learn important skills like typing, coding and making presentations. Students in elective classes learning about digital applications, green screen technology and even host a weekly news show! You can check out POP News on YouTube by searching for POP News - Prince of Peace Catholic School News.



Prince of Peace Catholic School



Jane Shriver, principal
913-764-0650
jshriver@popolathe.org

Interested in learning more about
Prince of Peace Catholic School?

Visit us at
www.popolathe.org/school/admissions

ENROLLMENT FOR THE 2022/2023 SCHOOL YEAR

PRINCE OF PEACE

EARLY EDUCATION CENTER

You may enroll for full-time childcare or part-time preschool classes in the Early Education Center office. For new students, there is a \$200 enrollment fee due at the time of enrollment; returning students will pay a \$125 enrollment fee.

If you would like to schedule a tour or for more information, please call the EEC Office at 913-829-2728.



VALUE
THEM
BOTH

Tailgate Prayer Rally

Join Archbishop Naumann, the Holy Family School of Faith Rosary team, and pro-life supporters from around the Archdiocese for a Value Them Both Prayer Rally on the grounds of Fiorella's in Overland Park on June 5th. This prayer rally will kick off an important week of action for Value Them Both volunteers to spread the word about the amendment throughout our community.

Sunday, June 5

at Fiorella's, Overland Park

5 PM

Tailgate, yard games, live music, week of action registration

6 PM

Opening comments and prayer by Archbishop Naumann + the Value Them Both Team

6:30 PM

Holy Family School of Faith Rosary

7 PM

Eucharistic Adoration

7:30 PM

Closing prayer

AUGUST 2

"YES" is the Pro-Life Vote!



VALUE
THEM
BOTH



Learn more at ValueThemBoth.com

Paid for by Value Them Both, Julie Samaniengo, Treasurer

INVITATION TO ALL PARISHIONERS

Prayer Partners Needed for Open Adoration Hours

The Adoration Ministry is looking for parish members who are willing to make a weekly commitment for a specific day and hour. The hours listed below are in need of an additional prayer partner. Please review the list to see if one of these hours will fit into your schedule. If not, but you would still like to sign up for an hour, there are other hours available!

- ♦ Mornings: *Wednesdays* at 11AM
- ♦ Afternoons: *Wednesdays* at Noon, 1PM, 2PM, and 3PM
- ♦ Late Night: *Thursdays* at 11PM

If being a substitute on an "as needed" basis works better with your schedule, please think about days/times you would be able to consider a request. *Please contact Luan Billam, at adoration@popolathe.org or at 913-710-1940 for additional information. We will be glad to work with you.*

LADIES OF PEACE 'SERVICE' CO-CHAIR NEEDED

Do you have a passion for bringing women together to share in our faith? Do you crave fellowship with other women in our parish?

The Ladies of Peace Board is looking for 1 woman to join our SERVICE pillar. Co-chair will serve a two-year term, meet quarterly with other board members and work with volunteers to coordinate 4 SERVICE events per year. If interested or have questions, please contact ladiesofpeace@popolathe.org.

FRIENDS OF ST. ANTHONY

Wednesday, June 1 | 11:30AM | Parish Hall Meeting Room

The Friends of St. Anthony will meet on Wednesday, June 1, in the Parish Hall Meeting Room at 11:30AM. We will have a potluck luncheon and celebrate America so bring your favorite American dish. Please bring the following to serve 10 (last names): A-H Main Dish / I-R Side Dish / S-Z Dessert

KEEP IN MIND THAT OUR ANNUAL "CHRISTMAS IN JULY" dinner generously hosted by the Knights of Columbus, will be on Saturday, July 16, after the 5PM Mass. We will have dinner and then play bingo!

NOTE: Anyone 55 or over is welcome to join us. You can bring a homemade dish or pick up something at the store. The goal of this group is to meet new people, enjoy a meal, and share a fun afternoon. Bring a friend if you'd like. Questions? Please call Rollene Croucher, at 913-963-5342, Bernie Hengeli, at 913-961-1470 or Cathleen Ogle, at 913-449-2539.

ST. MARY'S FOOD KITCHEN

Monday, June 6 | Meal Support for 200-250 Guests

The Prince of Peace parish community provides lunch to the St. Mary's Food Kitchen on the first Monday of each month. This parish outreach ministry serves as many as 200-250 guests. If you would like to be included in the monthly SignUpGenius link for meal support, or want to find out more about the Food Kitchen, please contact Tom Keegan, Coordinator at 913-226-1756.

BABY BOTTLE DRIVE, OLATHE PREGNANCY CLINIC

Drop-Off (Bottle Return) Weekend | June 18/19

Sponsored by the Knights of Columbus and Respect Life Committee. Please return your donation filled Baby Bottles on Father's Day weekend, June 18/19. Questions, please contact Troy Mills, at 913-787-0190 or tapamills@gmail.com.

CATHOLIC CHARITIES FOOD DRIVE NEWS

Next Food Drive, June 25-26

We are happy to report the results of our April 24th Food Drive for Catholic Charities. The weight of food donations was 1,963 pounds; and the cash donations were \$1,734.50. Thanks to all for your generous contributions. **Our next Catholic Charities Food Drive will be June 25-26.** Please mark your calendars and watch June bulletins for a list of needed items. For ministry information or questions please email Dave and Margie Greving, at mdgreving@gmail.com.

Parish Market ::

The New Roots for Refugees Parish Market is back! Stop by to visit our farmers Enoch and Zing Te for fresh, locally grown produce.

Sundays | 8 AM - Noon

East side of the main Church entrance,
May 22 through October





KNIGHTS OF COLUMBUS

PRO-LIFE SAUSAGE SALE

It's grilling season! Get your locally made Krizman Sausage for \$7 per pound (cash, check or credit card - payment due at pickup). All proceeds benefit local pro-life causes supported by the Knights! Varieties available:

**BARBEQUE | BLOOD | BRATWURST
BREAKFAST | CAJUN - ANDOUILLE
CHICKEN BRATWURST | POLISH
CHICKEN ITALIAN
MEXICAN - CHORIZO**

Please place your order by contacting Troy Mills at either tapamills@gmail.com or 913.787.0190 no later than Friday, June 3.

Sausage can be picked up after all morning Masses on Sunday, June 5 in the Parish Hall.

LADIES OF PEACE SOCIAL EVENT

KC Wine Co.


FRIDAY, JUNE 17
5:30 PM

13875 SOUTH GARDNER RD
OLATHE, KS 66061

Bring a lawn chair so we can gather together and listen to live music! We will be there by 5:30PM but feel free to join us when you can. We will have a sign so you can find us. Food, slushes and wine will be available for purchase. Start the weekend on a relaxing note with new and old friends! Questions: Contact Cathy Farmer at ladiesofpeace@popolathe.org



TUESDAY, MAY 24, 2022
FROM OPEN TO CLOSE, 11:00AM TO 9:30PM






MINSKY'S PIZZA
WILL DONATE UP TO 20%
of the amount of your total purchase to

PRINCE OF PEACE CATHOLIC CHURCH
BSA TROOPS 225 & 240

CAN'T ATTEND OR WANT TO HELP RAISE EVEN MORE?
Order lunch for your office or place a catering order the week of the Slice of Donation event and Minsky's will still contribute up to 20% Just ask your cashier when calling your order in.

Mention your organization to your server or cashier to be sure you get credit for your donation.
Not valid with any other promotions, discounts or package deals. Excludes alcohol. Donation applied before tax.

VALID AT OUR OLATHE BRADLEY LOCATION ONLY
(913) 780-9922 | 15983 S BRADLEY DRIVE, OLATHE, KS 66062


PACK 3240
Olathe, KS

CUB SCOUT PACK 3240 MINI-CAMP

Kids and their families are invited to participate in the Prince of Peace Mini-Camp hosted by Cub Scout Pack 3240. Grades K-5 can camp on the field with us. This event is Free.

What: Free Ice Cream Sundaes with the Cub Scouts
When: Camping June 10, 2022 at 5:00PM (registration required)
Day Camp Events, June 11, 2022 at 9AM
Where: Prince of Peace Football Field
Contact: Marilee Thompson, 913-687-5744
marileethompson4@gmail.com



*Adventure is Waiting...
Take the first step in yours!*



Next week is the collection for the Catholic Communication Campaign. This campaign connects people with Christ and builds Catholic communities in the United States and developing countries using the internet, television, radio, and print media. Half of the money collected remains here in the Archdiocese of Kansas City in Kansas to fund local communications efforts. Your support helps spread the Gospel message! To learn more, visit www.usccb.org/cc.

The offertory envelope for this collection is available in your May envelope packet; or make an online donation today, at popolathe.weshareonline.org.

BULLETIN DEADLINE NOTICE

Attention Parish Program and Ministry Coordinators, due to the upcoming Memorial Day holiday, our bulletin service has moved up our printing schedule. NOTE: June 5, 2022 bulletin announcements are due by 12:00PM on Wednesday, May 25. Email print-ready announcements to lvillagomez@popolathe.org.

Weekly Calendar of Events:

Monday, May 23

6:15AM & 8:15AM Daily Mass — Church
6:30PM Sew & Sew Quilters — Faculty Lounge
6:30PM Boy Scout Troop #240 — Parish Hall

Tuesday, May 24

6:15AM & 8:15AM Daily Mass — Church
6:30PM Bible Timeline Study — Emmaus Room

Wednesday, May 25

6:15AM & 8:15AM Daily Mass — Church
12:00PM Confession (12-1PM) — Church
7:00PM Rosary Group — Church

Thursday, May 26

6:15AM & 8:15AM Daily Mass — Church
6:00PM Ministry Leaders Meeting — Conference Room #1
7:00PM St. Gregory Choir Practice — Church

Friday, May 27

6:15AM & 8:15AM Daily Mass — Church
5:45PM Our Lady of Fatima — Conference Room #1

Saturday, May 28

8:15AM Daily Mass — Church
3:30PM Confession (3:30-4:30PM) — Church
5:00PM Vigil Mass — Church

Sunday, May 29

The Ascension of the Lord / 7th Sunday of Easter
7:30AM, 9:00AM, 11:00AM & 5:00PM Mass — Church
8:00AM Parish Market (8AM-12PM) - Outside Main Church Doors
6:00PM PYRO Youth Ministry (6-8PM) — Youth Room

Parish Offices & Staff

Parish Office | 913-782-8864

16000 West 143rd Street Olathe, Kansas 66062
Fax: 913-780-9658 | Website: www.popolathe.org
Office Hours | Monday-Friday: 8:00AM - 4:00PM

Parish Staff

Pastor, Fr. Greg Hammes | frgreg@popolathe.org
Parochial Vicar, Fr. Kenn Clem | frkenn@popolathe.org
Archdiocesan Minister to Priests, Fr. Francis Hund | frfrancis@popolathe.org
Parish Manager — John Meyers | jmeyers@popolathe.org
Parish Secretary — Linda Murray | lmurray@popolathe.org
Accountant — Paula Hutton | phutton@popolathe.org
Director of Music & Liturgy — Melissa Jakmouj | mjakmouj@popolathe.org

Christian Formation Office | 913-829-1147

Director of Children's Ministry — Shannon Cardaronella
scardonella@popolathe.org
Youth Office — Megan Miguel | mmiguel@popolathe.org
Youth Office Admin Asst. | VIRTUS — Ashley Vardijan
avardijan@popolathe.org
Director of Adult Faith Formation & Evangelization —
Larissa Smith | lsmith@popolathe.org
Office Manager — Jean Killeen | jkilleen@popolathe.org

Parish School | 913-764-0650

Principal — Jane Shriver | jshriver@popolathe.org
Asst. Principal — Caitlyn Allen | callen@popolathe.org
Office Manager — Marcia Valera | mvalera@popolathe.org

Early Education Center | 913-829-2728

Director — Kate Potter | kpotter@popolathe.org
Asst. Director — Jamie Wessel | wessel@popolathe.org

Around Town

VIRTUAL TRIVIA NIGHT – AN ORDINATION CELEBRATION

Wednesday, May 25 | 6:30-9PM |

Join us on Wednesday, May 25 from 6:30 to 9 pm, as the Vocation Office hosts its annual Trivia Night to honor and celebrate the two men who will be ordained to the priesthood! Gather a group of 8-12 players (\$25/person) and prepare to challenge other teams for prizes. The evening will include:

- Seven rounds of questions
- 50/50 raffle
- Prizes awarded to the top two teams

Looking for a little inside help? Bid on a seminarian to join your team, live and in-person, for the event. Please check our website for details, registration, and to participate in the seminarian auction: <https://one.bidpal.net/seminarian2022>. Contact the Vocation Office at 913-647-0303 or vocation@archkck.org with any questions. All proceeds directly benefit our seminarians and the ongoing mission of the Vocation Office.

8TH ANNUAL PITCHING FOR PRIESTS SOFTBALL GAME

Friday, June 10 | 7PM | KC Monarchs Stadium KCK

This annual event benefits Our Seminarians. Priests from Kansas City St. Joseph VS. Priests from the Archdiocese of Kansas City in Kansas Friday, June 10, at 7PM Tailgating will begin at 4PM at the KC Monarchs Stadium (Old T-Bones Stadium), Legends Field Ballpark 1800 Village West Pkwy, KCK. VISIT: PitchingforPriests.com

ENCOUNTER SCHOOL OF MINISTRY

July 11-14 | 6-9PM | St. Agnes Catholic Church

The Encounter KC Summer Intensive is a 4-night evening school that provides a survey of the content offered in the first 4 quarters of the Encounter School of Ministry launching RIGHT HERE in Kansas City.

With two teachings each night, this quick paced, jam-packed course will educate, equip, and activate you to partner with Jesus and further bring about the Kingdom of God here on earth!

REGISTRATION: encounterkc.regfox.com/encounter-kc-summer-intensive

WHO: The Encounter KC Summer Intensive is open to anyone 18 years and older.

WHEN: July 11-14, 2022 from 6:00-9:00PM each day

WHERE: St. Agnes Catholic Church Parish Hall, 5250 Mission Rd, Roeland Park, KS, 66205

COST: The cost is \$100/person.

QUESTIONS: Contact Lee McMahon, at 785-218-2708

CAMP KATERI TEKAKWITHA IN 2022

Sr. High, Jr. High, Kateri & Family Camps | Prairie Star Ranch Williamsburg, KS

Come join us in faith, fun, and friends down at Camp Kateri Tekakwitha in 2022! Camp has always been a place of adventure activities combined with powerful, spiritual, and unique encounters with God. We look forward to spending time with you. Visit www.archkck.org/camp for more information and camp availability.

SR HIGH IS FOR CAMPERS ENTERING 9TH-12TH GRADE FALL 2022

- ⇒ HS Max \$455 June 20-25
- ⇒ HS Extreme \$535 July 25-Aug 2

JR HIGH IS FOR CAMPERS ENTERING 7TH/8TH GRADE FALL OF 2022

- ⇒ J-high 1 \$450 June 6-11
- ⇒ J-high 2 \$450 June 27-July 2 (Boys FULL — Register for waitlist)
- ⇒ J-high 3 \$450 July 18-23 (Camp is FULL — Register for waitlist)

KATERI IS FOR CAMPERS ENTERING 5TH/6TH GRADE FALL OF 2022

- ⇒ Kateri Session 1 \$290 June 3-5
- ⇒ Kateri Session 2 \$290 June 13-15 (Boys FULL — Register for waitlist)
- ⇒ Kateri Session 3 \$290 July 11-13 (Boys FULL — Register for waitlist)

FAMILY CAMPS

- ⇒ Cost - \$150 per camper 2yrs of age and older
- ⇒ Family Camp (Special Needs) June 17-19*
- ⇒ Family Camp July 8-10 (Camp is FULL — Register for waitlist)
- ⇒ Spanish Family Camp July 15-17

Trained staff available this weekend to help families with special needs campers. All families welcome! Bienvenidas las familias hispano parlantes (Welcoming Spanish speaking families)

NFP PRACTITIONER EDUCATION PROGRAM | August 13-20

Are you passionate about NFP? Have you ever considered teaching NFP? The FertilityCare Center of Kansas City is pleased to announce a Creighton Model FertilityCare Practitioner Education Program beginning August 13-20, 2022. Come be part of this exciting event and join our team! Classes will be held in Independence, MO. Information and application materials can be found at www.fertilitycarekc.com under FertilityCare Practitioner Training.

NEW HELPING KANSAS WOMEN RESOURCE

Thanks to the generous support of many across the Archdiocese for the Church's Respect Life efforts, the Archdiocese is able to fund an ad campaign running this month encouraging those experiencing unplanned or difficult pregnancies to contact Pregnancy Resource Centers who are eager to provide support. Please visit the new resource website [Helping Kansas Women](http://HelpingKansasWomen.com) to view the ads and to help spread the word. As Archbishop Naumann says, "We truly do value both mother and child, wanting them both to not only survive but to thrive."

SAINT THOMAS AQUINAS GRADE SCHOOL SUMMER CAMPS

May-August | Grades K thru 8

During May through early August, Saint Thomas Aquinas High School provides a variety of summer camps for students entering grades K through 8 to explore. Our summer camps give students the chance to discover their potential in both sports and other activities (baking/candy making/choir/STEM camps and more!). Registration and further information is available online, through our website at www.stasaints.net/summercamps. We look forward to providing a positive camp experience not only for your son or daughter but for their friends as well! For questions, please call the Athletic Office at 913-319-2416 or email btriggs@stasaints.net.



COAST CREW

HOMES | LAND | RELOCATION

Larry and Marian Coast
Certified Residential Specialist
Senior Real Estate Specialist
Parishioners

marian@coastcrew.com
www.coastcrew.com

O 913-661-6750 | C 913-244-1543



KANSAS CITY
HOMES

SUPPORT OUR
ADVERTISERS!



learn.
grow.
soar.

FORMING MEN AT
THE ROCK
ROCKHURST HIGH SCHOOL

WWW.ROCKHURSTHS.EDU/ADMISSIONS

stroede
ORTHODONTICS
Claire L. Stroede, DDS, MS
StroedeOrtho.com
913-491-3400

*Project Rachel-
Project Joseph*

Healing after an abortion

913-621-2199

Dupree Lawn & Landscaping

**Irrigation Repair and Installation
Weed Control / Turf Maintenance
Mulch Installation and much more**

Call (913) 856-0120



MEYER FAMILY DENTISTRY

11021 HAUSER ST.

LENEXA, KS 66210

913-451-3400

PARISHIONER OF
ST. MICHAEL THE ARCHANGEL

The Genuine. The Original.



Overhead Door Company of Kansas City™
A **CHPACE** Company

REPAIR + REPLACE GARAGE
DOORS AND OPENERS

RESIDENTIAL DOORS

FREE ESTIMATES

913-361-6023

OverheadDoorKansasCity.com



SERVING
KANSAS CITY
Since 1927

WE'RE HIRING

AD SALES EXECUTIVES

**BE YOURSELF. BRING YOUR PASSION.
WORK WITH PURPOSE.**

- Paid Training
- Some Travel
- Work-Life Balance
- Full-Time with Benefits
- Serve Your Community



Contact us at careers@4lpi.com
www.4lpi.com/careers

**FREE
AD DESIGN**

WITH PURCHASE
OF THIS SPACE



**CALL
800.950.9952**

SWICKARD CHIROPRACTIC CLINIC

Nicholas J. Swickard, D.C.

(913)-897-6717

Fax (913)-897-6795

15050 Antioch Road, Suite 102
Overland Park, KS 66221

GROW YOUR BUSINESS

BY PLACING
AN AD HERE!

CONTACT US!

Contact James Bradley
to place an ad today!
jbradley@4LPi.com or
(800) 950-9952 x2655



ADT-Monitored Home Security

Get 24-Hour Protection From a Name You Can Trust

- Burglary
- Flood Detection
- Fire Safety
- Carbon Monoxide



Authorized
Provider

SafeStreets

1-855-225-4251



OLATHE
LINCOLN *Ford*

*Home of the World's
Happiest Customers!*

1845 E SANTA FE • OLATHE, KS • 66062

913-782-0881

WWW.OLATHEFORD.COM

THE
COLLECTIVE

COMPASS
REALTY
GROUP



Jennifer Leon

Real Estate Consultant

jenniferleon@thecollectivekc.house

M: 316.644.6621

O: 816.280.2773

Prince of Peace Parishioner



For ad info. call 1-800-950-9952 • www.4lpi.com

Prince of Peace, Olathe, KS.

C 4C 02-0716



The Premier Garage
Door Service Provider

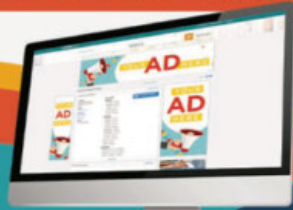
913-354-7392

10% OFF Any Service*

*Can't be combined with any other offer

STAND OUT

with a PREMIUM DIGITAL AD
on PARISHESONLINE.COM



CONTACT US AT 800-950-9952



Preferred Pediatrics

Stuart G. Shanker, M.D., FAAP • Amy L. Voelker, M.D., FAAP
Allison S. Hettinger, M.D., FAAP • Shawna C. Patch, M.D., FAAP

824 W. Frontier Lane, Olathe, KS 66061 • (913) 764-7060



Jon Stanfield
Estate Planning
& Administration

913.827.3729

jon@rklawoffice.com | www.rklawoffice.com



SUPPORT OUR ADVERTISERS!



GROW YOUR BUSINESS

BY PLACING
AN AD HERE!

CONTACT US!

Contact James Bradley
to place an ad today!
jbradley@4LPi.com or
(800) 950-9952 x2655



CHAMBERLAIN MCDONALD FAMILY EYE CARE

Brian S. McDonald, O.D.
Joanna C. Meats, O.D., Parishioner
Dawn A. Ertel, O.D.
15205 S. Blackbob • Olathe, KS 66062
(913) 390-4900

Hours: M & W 9-6 • T & Th 10-7 • Fri & Sat 9-1

Project Rachel-Project Joseph

Healing after an abortion

913-621-2199

435 ROOFING Made in KC

REROOFS
REPAIRS
INSPECTIONS
RESIDENTIAL
COMMERCIAL

Whitney Coulter, Parishioner

(913) 444-0725

WWW.435ROOFING.COM



smile more.

- Extended Hours
- Free Consultation
- Smiling and Sleep Apnea
- Invisalign
- Clear Braces
- Dr. Klein and Dr. Walker,
- Board Certified
- Orthodontists

OVERLAND PARK OLATHE
P 913.681.8138 P 913.829.4466

www.kleinwalkerorthodontics.com

FRANKLIN TYRER AGENCY

Auto • Home • Life • Business • More
913-829-8282
fityrer@amfam.com
14151 S Mur Len Rd, Olathe, KS
www.FranklinTyre.com



AMERICAN FAMILY INSURANCE

American Family Mutual Insurance Company and its Subsidiaries American Family Life Insurance Company Home Office - Madison, WI 53703 800.872.0811 S/11

WE'RE HIRING

AD SALES EXECUTIVES

BE YOURSELF. BRING YOUR PASSION.
WORK WITH PURPOSE.

- Paid Training
- Some Travel
- Work-Life Balance
- Full-Time with Benefits
- Serve Your Community



LPi Contact us at careers@4lpi.com
www.4lpi.com/careers



George J. Schlager P.A.
Attorney - Of Counsel
Parish Member-Olathe Office
Member - Knights of Columbus

Wills • Trusts • Probate • Real Estate
Free Initial Consultation • Discount for Parish Members
100 E. Park, P.O. Box 10, Olathe, KS 66051
913.782.5885 - gschlager@kansaslegalteam.com



401 S. CLAIRBORNE, SUITE A
OLATHE, KS 66062

913-782-2231

BRYANT PHYE, D.D.S.
VANESSA PHYE, D.D.S.
GREG ALTON, D.D.S.
SARA GASAWAY, D.D.S.
ADRIAN GOMEZ, D.D.S.

Place Your Ad Here and
Support our Parish!

Instantly create and
purchase an ad with

AD CREATOR STUDIO



4lpi.com/adcreator

Confidence with every smile HANNAH ORTHODONTICS

www.HannahBraces.com
7505 Quivira • Lenexa • 913-268-5559
1441 E 151st • Olathe • 913-829-2244



Central Bank

Strong roots. Endless possibilities.™

Julie Vari Adams

Senior Mortgage Banker, POP Parishioner
Let me help find the right mortgage for you!

(913) 234-9570

julie.adams@centralbank.net

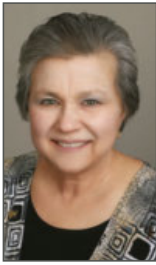


For ad info. call 1-800-950-9952 • www.4lpi.com

Prince of Peace, Olathe, KS

B 4C 02-0716

THE CROUCHER GROUP



ROLLENE CROUCHER Real Estate Specialist

Parish Member Since 1985

913.963.5342

rcroucher@kw.com

www.crhomeskc.com

kw DIAMOND PARTNERS
KELLER WILLIAMS REALTY



Named Best Driving
School in Kansas City by
— 435 MAGAZINE

Mark Schuetz,
Owner and
Prince of Peace Parishioner

913-980-9400 • schuetzdrivingschool.com

GROW YOUR BUSINESS WHILE
SUPPORTING YOUR LOCAL PARISH.



Purchase a bulletin ad today!

SUPPORT OUR
ADVERTISERS!



REECE & NICHOLS

Anyone Can Tell You What Your Home is Worth.
I can Show You How To Make Your Home Worth More!

Jerry Nosbish Cell: 816-392-6244

Parish Member since 1987 Referrals are Appreciated

jnosbish@reeceandnichols.com Licensed in KS & MO

TOM FLETCHER

PAINTING &
REMODELING



913-908-8766

GROW YOUR
BUSINESS
BY PLACING
AN AD HERE!

CONTACT US!

Contact James Bradley
to place an ad today!
jbradley@4LPi.com or
(800) 950-9952 x2655



Brain Balance®
Overland Park

Poor Focus | Learning & Sensory Issues | Anxiety | Behavior



**Improve the Foundation of
Development**



Customized Programs



Measured Outcomes

Ages 4 & up

6414 College Blvd, Overland Park | (913) 627-9400
Ann & Jim Cahill, Holy Spirit parishioners



Land Escapes LLC

Design • Build • Maintain

913.638.1308

www.LandEscapesOP.com

**FREE
AD DESIGN**

WITH PURCHASE
OF THIS SPACE



CALL

800.950.9952

NEVER MISS A BULLETIN !

Sign up to have our weekly parish bulletin
emailed to you at www.parishesonline.com



Place Your Ad Here and
Support our Parish!

Instantly create and
purchase an ad with

AD CREATOR STUDIO



4lpi.com/adcreator

WE'RE HIRING

AD SALES EXECUTIVES

**BE YOURSELF. BRING YOUR PASSION.
WORK WITH PURPOSE.**

- Paid Training
- Some Travel
- Work-Life Balance
- Full-Time with Benefits
- Serve Your Community



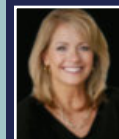
Contact us at careers@4lpi.com
www.4lpi.com/careers

Licensed in
KS & MO



Referrals
Appreciated

**COLDWELL BANKER
REGAN REALTORS®**



**Shelly
Taylor**

Parishioner

913.669.5911

staylor@cbregan.com



For ad info. call 1-800-950-9952 • www.4lpi.com

Prince of Peace, Olathe, KS

A 4C 02-0716