

SAIN JOHN PAUL II

CATHOLIC CHURCH

January 02, 2022



THE EPIPHANY *of the Lord*

"Since from you shall come a ruler,
who is to shepherd my people Israel." - Mt 2:6b

Excerpts from the Lectionary for Mass ©2001, 1998, 1970 CCD.

WEEKEND MASS

Saturday Vigil

4:00 PM

Sunday

7:30 AM, 9:00 AM &

11:00 AM

WEEKDAY MASS

Tuesday-Wednesday

5:30 PM

Thursday-Friday

7:00 AM

CONFESSION

Located in Cry Room

Saturday

3:00-3:45 PM

Wednesday

6:00-7:00 PM

WEBSITE

JP2KC.ORG

PHONE

(913) 747-9636

GIVE ONLINE



Saint John Paul II Catholic Church is called to open doors to Jesus Christ through authentic witness in the home, joyful hope in worship, and fruitful service to our neighbors, offering the opportunity not to have more but to be more.

CHURCH & PARISH OFFICE: 18335 W. 168TH TER, OLATHE, KS 66062 | OFFICE HOURS: MON - THURS 9:00 AM - 2:00 PM

Have you noticed our new hymn boards?

They're very attractive and helpful.

Thanks so much to Bill Huigens for creating them, and Trish Wilbur for the new numbers!

What great examples of discipleship...

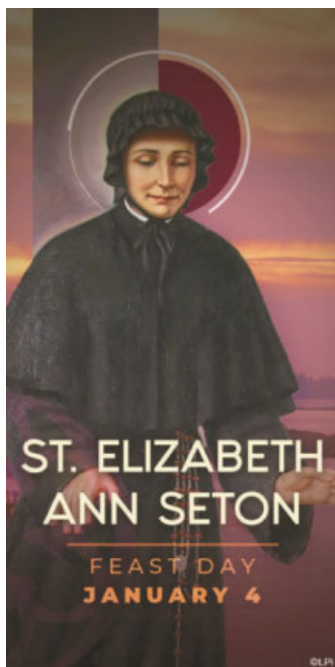
My dear friends...

The new church year brings a status change for me as a deacon. I have asked for and been granted retirement status by Archbishop Naumann. I will still be a deacon and retain my faculties, able to Baptize, witness marriages and do graveside services, but not have a parish assignment.

When we moved to Olathe in 2009 we had threefold criteria (1) be close to my job; (2) close to children and grandchildren; (3) close to retail. One thing we didn't consider was the faith community that we would join. But that community turned out to be our greatest blessing. The Prince of Peace and St. John Paul II communities have exceeded anything we could have ever dreamed of. I have had the privilege of Baptizing your children, being present for more First Communion and Confirmations than I can count, serving at your weddings and burying your dead and we have spent hundreds of hours in the Emmaus Room. So many, many fond memories. As I enter a new phase of my life I'm sure we will see one another in the community, probably at Price Chopper or HyVee or CVS and I look forward to those encounters and don't be surprised if we also see you at Mass at any of the Johnson County Parishes.

In parting I ask you to cherish the Church and Her Sacraments, they are Christ's gift to us. These encounters are our glimpse of an eternity with Our Lord and Savior. God bless each of you as the memorial of Our Lord's Nativity approaches.

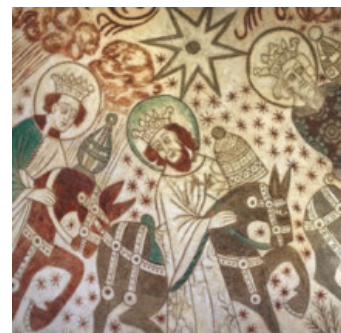
Deacon Charlie



The patron saint of Catholic schools, St. Elizabeth Ann Seton (August 28, 1774 - January 4, 1821) was born in New York City to a prominent family of the Episcopal faith. When she turned 19, she married a wealthy businessman with whom she had five children. He later died of tuberculosis in 1803, leaving her a young widow. After discovering the Catholic faith in Italy, where her husband had died, she returned to New York and converted to Catholicism in 1805.

After several years struggling as a single mother, Elizabeth moved in 1809 to Emmitsburg, Maryland, where she founded the Sisters of Charity of St. Joseph, the first community for religious women established in the United States. She also began St. Joseph's Academy and Free School, which started a chain reaction of Catholic-based education in the United States that continues today.

St. Elizabeth Ann Seton was canonized September 14, 1975 in St. Peter's Square by Pope Paul VI and was the first citizen born in the United States to be given the title of "saint." ©LPI



GOLD
FRANKINCENSE
MYRRH



The song "We Three Kings" details the gifts of the Magi, but do you know what you're singing? "Born a king on Bethlehem's plain, gold I bring to crown Him again." This one is the most straightforward - gold symbolizes the Kingship of Christ. "Myrrh is mine: its bitter perfume breathes a life of gathering gloom." Myrrh is an embalming spice. Already at Christ's birth, we have the symbolic reminder of his death. "Frankincense to offer have I. Incense owns a deity nigh." In many religious traditions, incense symbolizes prayers rising to heaven. In some pagan traditions, it is thought to help "call down" the deity. The gift of frankincense symbolizes Jesus' role as the Great High Priest, sanctifying the world through his sacrifice.



QUICK CALENDAR

Saturday, January 1

Vigil of the Epiphany of the Lord
4:00 pm

Sunday, January 2

The Epiphany of the Lord
7:30 am The People of the Parish
9:00 am † Mary Jo & Barney Byrne
11:00 am David Ecklund

Monday, January 3

Monday after Epiphany
NO Mass

Tuesday, January 4

St. Elizabeth Ann Seton, Religious
5:30 pm

Wednesday, January 5

St. John Neumann, Bishop
5:30 pm Hanna Lane

Thursday, January 6

Thursday after Epiphany
7:00 am † Paul Lam Nguyen & Anna Nho Nguyen

Friday, January 7

Friday after Epiphany
7:00 am † Julius and Eileen Stuhlsatz

Saturday, January 8

Vigil of the Second Sunday in Ordinary Time
4:00 pm

Sunday, January 29

Second Sunday in Ordinary Time
7:30 am
9:00 am The People of the Parish
11:00 am Diane Drouhard & Family

Sunday, January 2

10:00a RCIA, St. Michael Room

Tuesday, January 4

6:00p Marian Mantle

Wednesday, January 5

7:00p Resound

Thursday, January 6

10:30a Cedar Lake Communion Service

Sunday, January 9

10:00a RCIA, St. Michael Room

11:30a CYF Classes, grades 1 & 2

6:00p CYF Classes, grades 7 & 8



Thank you to all who contributed to the Christmas flower memorials. The following names were received after the Christmas bulletin insert was produced:

Bob & Patsy Denzel
Clem & Katie Suellentrop
David & Ruth Ann Borthwick
Loretta & Vernon Noll

JP2 Book Club / 2nd Tuesday of the month: We are reading *The Life of the Blessed Virgin Mary: from the visions of Ven. Anne Catherine Emmerich* by Anne Catherine Emmerich. We will meet in the Conference Room. Contact Bridget Van Gotten bvangott@gmail.com with any questions. All are welcome even if you haven't read the book

Marian Mantle / Weekly on Tuesdays at 6 p.m.: Join the Marian Mantle Prayer Group to pray for loved ones who are not practicing Catholics. We meet weekly on Tuesdays immediately following the 5:30 p.m. Mass at approximately 6 p.m. in the Church. For more information, contact Sharrid Girard at 913-530-6229 or sharridg@gmail.com.

RESOUND / Wednesdays at 7 p.m.: Each Wednesday we will come together to listen to the voice of our Lord in the Catechism, starting with the part on Christian prayer. We begin each meeting with Evening Prayer from the *Liturgy of the Hours*. All adults are welcome! No registration or commitment required. Materials are provided. For more information, contact curtiskeddy@jp2kc.org

JP2MOMS (Mothers of Ministry & Service): JP2Moms is a group of mothers of all ages and stages whose mission is to promote Catholic family values through a variety of social, service, and spiritual activities. Members are mothers (biological, adoptive, or spiritual) who come together to share meaningful experiences. Find us on Facebook @JPMoms for more information or email jp2moms@jp2kc.org.

Women of JP2: A new, vibrant women's organization that just started in the parish! Women of JP2 will promote and guide women in any life stage to ministries and activities that deepen their relationship with Christ, the parish, and other women. Contact womenofjp2@jp2kc.org for more information.

St. Mary's Food Kitchen ~ 4th Sunday of the month: St. Mary's Food Kitchen is a non-profit organization that serves hungry people every day of the year. Our parish serves at St. Mary's Food Kitchen on the 4th Friday of each month.



Q: What happens to a consecrated host if it accidentally falls to the ground?

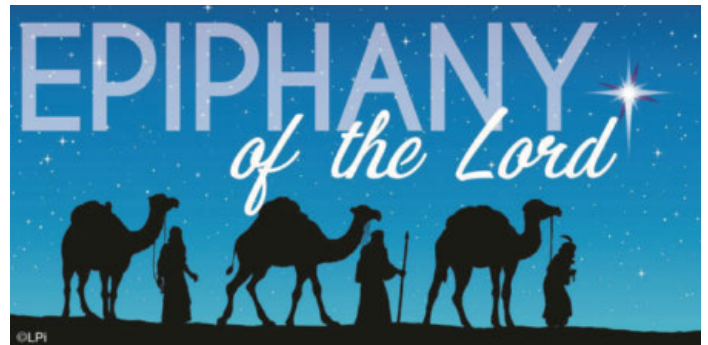
A: This is a very practical question because, as we all know, accidents happen, even during the most careful celebration of the liturgy. The short answer to this question is that nothing happens to the consecrated host. The Real Presence of Jesus remains in the consecrated host or any consecrated wine that might accidentally be spilled.

Another question we might ask is: How should the ministers respond if the Eucharist is dropped or spilled? If this happens, the priest, deacon, or extraordinary minister of holy Communion should immediately pick up the dropped host and consume it. If it is a case of the Precious Blood being spilled, the minister would use the purificator (and additional purificators if needed) to clean the spill and then the area should be reverently washed as soon as the Mass is over and the water poured into the sacrarium (a special sink that is located in church sacristies for reverently disposing of holy water, the water used to clean sacred vessels, etc.). ©LPI

St. John Paul II is looking for artists who are interested in decorating the hallways in the lower level for the Catholic Youth Formation program. Ideas of what we're looking for: stencils, graphics, calligraphy, vinyl transfers, etc. If you are interested please contact Rebecca Browns at rebeccabrowns@jp2kc.org

Would you be willing to lead the rosary before weekend Mass?

We are looking for volunteers willing to lead the rosary from your pew
 - or fill-in as a substitute leader -
 for our weekend Masses. We especially need volunteers for the 4:00 p.m. and 11:00 a.m. Masses. Instructions on how to lead will be provided. Please email marcielogsdon@jp2kc.org to volunteer!





St. John Paul II Knights of Columbus chapter #16595 is sponsoring the annual Knights of Columbus Free-Throw Contest! This is a joint venture with Prince of Peace and St. Paul Catholic Churches. This is a fun opportunity for our parish youth to meet the kids from our nearby parishes while enjoying a couple hours of fun. We will be following safe protocols.

KofC Council Contest - January 22, 2022

KofC District Contest - February 5, 2022

Age groups: Boys 9 -14 years old & Girls 9 -14 years old

Location: Prince of Peace basketball court Time: 9 a.m. to - Noon both days Registration is between 9 - 9:30 a.m.

Download the registration form from our homepage at jp2kc.org.



Mark your calendar for the next Knights of Columbus Coffee & Donuts after the 7:30 & 9:00 a.m. Masses Sunday, January 16

IGNITE

YOUTH RALLY AND MASS FOR LIFE

Come Holy Spirit, set our hearts aflame to defend life!

TOPEKA PERFORMING ARTS CENTER

JANUARY 25, 2022

- 8:30AM DOORS OPEN
- 9:00AM SPEAKER PROGRAM
- 10:30AM MASS WITH THE BISHOPS OF KANSAS
- 12:00 PM MARCH TO CAPITOL FOR KANSANS FOR LIFE RALLY
- 1:00 PM EUCHARISTIC ADORATION. MATER DEI PARISH, 10TH & CLAY



KEYNOTE: KRISTAN HAWKINS
President of Students for Life of America



MASS WITH THE BISHOPS OF KANSAS



MUSIC BY ALL THINGS I AM

FOR INFORMATION AND TO REGISTER VISIT:
ARCHKCK.ORG/IGNITE

This free event is intended for youth, but all are welcome!



PRO LIFE OFFICE
Archdiocese of Kansas City in Kansas

Respond & Reflect

First Reading: The prophet Isaiah foresaw a time of great joy for Israel when nations and kings would come to Israel praising the Lord. How do you show gratitude to the Lord for the great joys of your life?

Second Reading: It was revealed to Paul that God intended to save all people (Jews and Gentiles) through his Son, Jesus Christ. Paul tried to convey the significance of this revelation to the Ephesians by using the language of "coheirs" and "copartners." What does this language signal to you?

Gospel: The visit of the magi is one of the most well-known stories from the Gospel infancy narratives. It was an event that manifested God's revelation of His newborn Son to the world. It also foreshadowed the threat that some would experience because of Jesus. How does Jesus challenge the status quo even today? ©LPI



GENERAL INQUIRIES

WEBSITE : JP2KC.ORG

PHONE : 913.747.9636

Fr. Brandon Farrar, Pastor

frrfarrar@jp2kc.org

Deacon Joe Allen, Permanent Deacon

dcnjoeallen@jp2kc.org

Meredith Patterson, Head of Operations

meredithpatterson@jp2kc.org

Marcie Logsdon, Pastoral & Administrative Assistant

marcielogsdon@jp2kc.org

Rebecca Browns, Associate Director of Formation

rebeccabrowns@jp2kc.org

Andrew Stanley, Formation

drewstanley@jp2kc.org

Katie Dahlstrom, Associate Director of Music

katedahlstrom@jp2kc.org

Kirk Baughan, Janitor

kirkbaughan@jp2kc.org

MINISTRIES:

CAPITAL CAMPAIGN

campaign@jp2kc.org

JP2MOMS

jp2moms@jp2kc.org

KNIGHTS OF COLUMBUS:

knights@jp2kc.org

RESPECT LIFE:

respectlife@jp2kc.org

WOMEN OF JP2

womenofjp2@jp2kc.org

UPDATE TO FAMILY INFORMATION?

Have you recently had a baby, moved to a new address, got a new phone number or email address? These changes may be made through our website at jp2kc.org. See "Update Parishioner Information" under the **Connect** tab.

SACRAMENT INFORMATION

Please see our website (jp2kc.org) for information regarding the following sacramental needs.

Becoming Catholic	Mass intentions
Funeral	New parishioner
Infant baptism	Religious education
Marriage	Sacramental emergency



December 13 - December 19, 2021

Operations	\$20,090.00
Capital Campaign	\$18,283.69
Angel Fund	\$50.00
Catholic Charities	\$85.00
Christmas	\$50.00
Christmas Flower Memorials	\$492.00
Faith Formation	\$50.00
Fund for Religious Retirement	\$75.00
Immaculate Conception	\$25.00
St. Mary's Food Kitchen	\$115.00
Tornado Relief Fund	\$3,153.00



Thank you for your commitment to St. John Paul II Parish. Our parish operations are sustained by your generosity. In order to maintain stability and fulfill our parish's mission, we need your consistent financial support. St. John Paul II Parish offers the following giving options:

- Automatic Bank Withdrawal (ACH) - the form to sign up is found at JP2KC.org under the Give menu.
- Online Giving via checking/savings account or credit card - these donations can be recurring or one-time.
- USPS Mail to the Parish Office (18335 W. 168th Terrace, Olathe, KS 66062).
- Text-to-give (833-979-1388) Normal text message rates from your carrier may apply.
- Visit GIVE at JP2KC.org for complete details on all of these giving options. Thank you for your commitment to our parish!

The Archdiocese remains committed to investigating any allegation of abuse of a minor made against any member of the clergy or any Church employee or volunteer — no matter the age of the incident or the current age of the victim. If you suspect abuse, immediately report to civil authorities: (1) Call the Kansas Protection Report Center at (800)922-5330 or report online at Reporting Abuse, Neglect and Exploitation of Adult and Child - Prevention and Protection Services (ks.gov). (2) Contact law enforcement if anyone is in immediate danger or injured. If the suspected abuse involves a cleric, employee, or volunteer of the Archdiocese, call the Archdiocesan Report Line at (913) 647-3051 or visit archkck.org/reportabuse. **We care about survivors of abuse.** Victim Care Advocate: (913) 298-9244.

CAPITAL CAMPAGIN FAQs

Q: I already donate to St. John Paul II, do I need to make a commitment to the capital campaign?

A: A commitment to the capital campaign is different than a commitment to the general operations of the parish. A capital campaign commitment is an additional commitment to the parish that exclusively funds the capital campaign. This commitment is over and above a commitment to the general operations of the parish. Both commitments are important since the commitment to the general operations covers the cost of the day-to-day operations of running a parish.



Q: Who will be asked to contribute to the Open Wide the Doors to Christ capital campaign?

A: Every parishioner of St. John Paul II Parish will be asked to participate financially in the Open Wide the Doors to Christ capital campaign. Commitments and donations from our parishioners will be maintained by the parish office. Funds received for the capital campaign are restricted for that use only. The funds cannot be used for the general operations of the parish. So it is important to support the parish for both general operations and the capital campaign.

The Archdiocese of Kansas City in Kansas is hiring!

The Chancery Offices currently have several employment opportunities:

- Administrative Assistant, Office of Marriage & Family Life
- Administrative Assistant, Office of Human Resources
- Consultant, Office of Human Resources
- Consultant for Student Services/Special Education, Schools Office
- Housekeeper (Temp), Prairie Star Ranch

Qualified candidates are encouraged to visit the ArchKCK's Website at www.archkck.org/jobs for more information.

Catholic School Teachers Needed!

Are you looking for rewarding work in Catholic education?

The Archdiocese of Kansas City in Kansas is looking for faith-filled Catholic school teachers at all levels from Pre-K thru 12th grade in our Catholic schools. The diocese has 36 elementary and 6 high schools. We have positions available for the right candidates. Applicants should hold a Kansas teaching, or be eligible to obtain a license. For questions contact the school office at 913-721-1570.

To complete the application, go to www.archkck.org/catholicschools/employment



Inspiration from St. John Paul II

"Only in Christ can men and women find answers to the ultimate questions that trouble them. Only in Christ can they fully understand their dignity as persons created and loved by God. Jesus Christ is "the only Son from the Father...full of grace and truth."

— John Paul II. World Youth Day, 1993. Denver, Colorado.

JANUARY 2, 2021 ~ FEAST OF THE EPIPHANY 7

Support our ADVERTISERS

FREE AD DESIGN
WITH PURCHASE OF THIS SPACE
CALL 800.950.9952

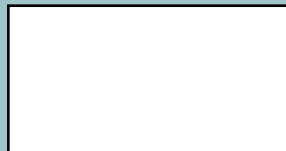
WE'RE HIRING
AD SALES EXECUTIVES
BE YOURSELF. BRING YOUR PASSION. WORK WITH PURPOSE.

- Work-Life Balance
- Paid Training
- Full-Time with Benefits
- Some Travel
- Serve Your Community

Contact us at careers@4lpi.com
www.4lpi.com/careers

Joseph P DeLargy, APMA®
Financial Advisor | Vice President
913.314.2325
jdelargy@ampf.com
AmeripriseAdvisors.com

Ameriprise Financial | Be Brilliant.
Ameriprise Financial Services, LLC. Member FINRA and SIPC.
Not FDIC Insured | No Financial Institution Guarantee | May Lose Value



SUPPORT OUR ADVERTISERS!

St. JP2
Council #16595
"Become a Knight...it feels good to serve others"





KLEIN & WALKER
ORTHODONTICS™

smile more.

- Extended Hours
- Free Consultation
- Snoring and Sleep Apnea
- Invisalign
- Clear Braces
- Dr. Klein and Dr. Walker, Board Certified Orthodontists

OVERLAND PARK

P 913.681.8138

OLATHE

P 913.829.4466

www.kleinwalkerorthodontics.com

**FREE
AD DESIGN**

**WITH PURCHASE
OF THIS SPACE**

CALL 800.950.9952

Janine Korgie
913.484.2827

Janine@ReeceNichols.com

Results that MOVE you!



ReeceNichols
REAL ESTATE



St. John Paul II
Founding
Members

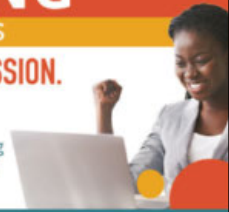
WE'RE HIRING

AD SALES EXECUTIVES

**BE YOURSELF. BRING YOUR PASSION.
WORK WITH PURPOSE.**

- Work-Life Balance
- Full-Time with Benefits
- Serve Your Community
- Paid Training
- Some Travel

Contact us at careers@4lpi.com
www.4lpi.com/careers



TasteBuds
K·I·T·C·H·E·N

Parties * Events
Camps * Adults

913-257-5667

tastebudskitchen.com/leawood



NEVER MISS A BULLETIN !

Sign up to have our weekly parish bulletin
emailed to you at www.parishesonline.com



**SUPPORT YOUR
LOCAL PARISH.**

Buy a bulletin ad space today!

**MIDWAY
AUTO**

Auto Parts • U Pull Yards • Vehicle Sales
We Buy Cars!! 816-241-0500
www.midwayauto.com

SUPPORT OUR ADVERTISERS!

ADT-Monitored Home Security
Get 24-Hour Protection From a Name You Can Trust

- Burglary
- Flood Detection
- Fire Safety
- Carbon Monoxide



MCGILLEY
MEMORIAL CHAPELS
SINCE 1899

MCGILLEY & FRYE FUNERAL
HOME & CREMATION SERVICE

Funerals • Cremations • Receptions • Celebrations
"Celebrating Lives"
913-782-0582

105 E LOULA STREET.

OLATHE KS 66061

WWW.MCGILLEYFRYEFUNERALHOME.COM



**AVAILABLE FOR
A LIMITED TIME!**

ADVERTISE HERE NOW!

Contact **James Bradley** to place an ad today!
jbradley@4LPi.com or (800) 950-9952 x2655

**SWICKARD
CHIROPRACTIC CLINIC**

Nicholas J. Swickard, D.C.

(913)-897-6717

Fax (913)-897-6795

15050 Antioch Road, Suite 102
Overland Park, KS 66221



COAST CREW

HOMES | LAND | RELOCATION

Larry and Marian Coast, CRS, SRES
Parishioners

coastcrew@kansascityhomes.com
www.coastcrew.com

O 913-661-6750 | C 913-244-1543



KANSAS CITY
HOMES

We've Missed You!

Welcome Back to Mass

Stay connected to our faith community no matter where you are
by signing up to get our bulletin delivered straight to your email!

www.ParishesOnline.com

**COLDWELL BANKER
REGAN REALTORS™**



**Shelly
Taylor**

Licensed in KS & MO
Referrals Appreciated

Founding member of
St John Paul II Parish

913.669.5911

staylor@cbregan.com



Proud to put our
community in Good Hands™

I'm pleased to support
our parish at St. John Paul II

Park Insurance Agency, Inc.
913-829-2700

Olathe
jasonpark@allstate.com



Allstate
You're in good hands.

© 2014 Allstate Insurance Co.



For ad info. call 1-800-950-9952 • www.4lpi.com

St. John Paul II, Olathe, KS

A 4C 02-1098