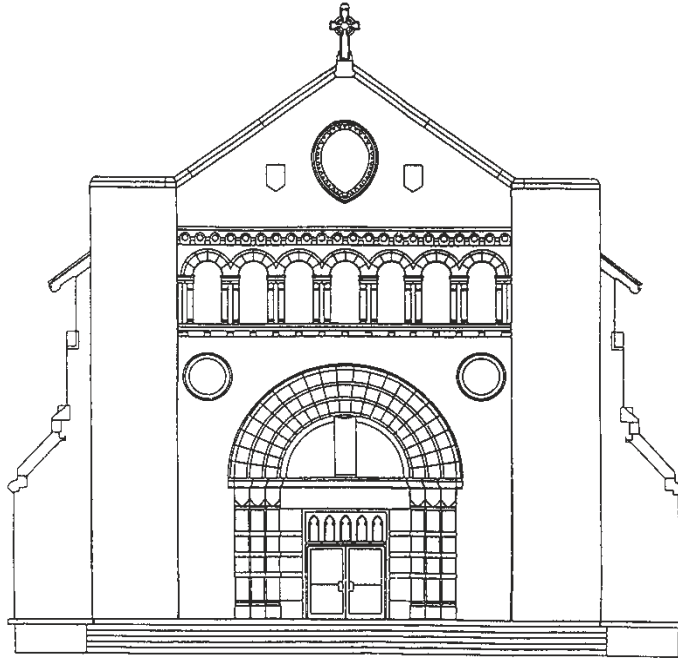


st. augustin church

Corner of Carroll & Harrison Avenues • Newport, R.I.
"Serving the people of God in the Fifth Ward"



MASS SCHEDULE

Saturday Evenings at 4:00 pm

Sunday Mornings at 9:30 am

Daily Mass : Tuesdays and Thursdays at 7:30 am

Rectory: 2 Eastnor Road P.O. Box 357 • Newport, R.I. 02840 Telephone: 847-0518

Sr. Josephine St. Leger Telephone: 849-8702

www.staugustinnewport.org

Pastor	Rev. Kris von Maluski	Pastor Emeritus	Rev. John McNulty
Pastoral Associate	Sr. Josephine St. Leger S.J.C.	Directory of Music	Matt Gnolfo
Volunteer Sacristan	Nancy Finn	Religious Ed. Coordinator	Shawn Burns

SACRAMENT OF BAPTISM

Upcoming Baptism Dates
May 19, June 16 after 9:30 Mass

SACRAMENT OF RECONCILIATION

Confessions are Saturdays' at St. Mary's from
8:00 a.m. or at either church by appointment.

SACRAMENT OF MATRIMONY

Please call the rectory at least one year in
advance. Be sure to have a confirmed date at
the church before making other arrangements.

MINISTRY TO THE SICK

Please notify us when a parishioner is home-
bound or hospitalized and would like Holy
Communion or the Anointing of the Sick.

SACRAMENT OF HOLY ORDERS

If you would like to serve God and his people
and the Church, please call our office of
vocations at 831-8011 or the Rectory.

BIRTHRIGHT COUNSELING

1-800-550-4900

BULLETIN ANNOUNCEMENTS: Must be submitted in writing by Monday, 4:00 pm

WELCOME

If you are new to the area, we welcome you to join our Parish Family.
Please introduce yourself after Mass and register in the Parish.
We want to know you and serve you.
We are a stewardship Parish – Sharing Time, Talent and Treasure.





MASS INTENTIONS FOR THE WEEK

Tuesday March 26 (Fr. Kris)

7:30 a.m. † Dearbhla Toomey

Thursday March 28 (Fr. George)

7:30 a.m. † William Nagle

Saturday March 30 (Fr. George)

4:00 p.m. † John Sullivan

Sunday March 31 (Fr. Kris)

9:30 a.m. People of St. Augustin's

SANCTUARY LAMP MEMORIALS



This week the Sanctuary Lamp will burn for Peace and Justice in the world Please remember this in your prayers.

**GROWING IN FAITH TOGETHER
FOCUS OF THE READINGS
Tempered with humility**

Reading I	Exodus 3:1-8b, 13-15 (the call of Moses)
Reading II	1 Corinthians 10:1-6, 10-12 (against overconfidence)
Gospel	Luke 13:1-19 (calls to penance; parables of the reign of God)
Key Passage	The reign of God is like a mustard seed that someone took and sowed in the garden; it grew and became a tree, and the birds of the air made nests in its branches. (Luke13:19b)
Adult	What important work could bear fruit in your life right now if you have more confidence in God's loving care?
Child	What great work would you like to do as you grow older? What can you do to begin now?



WEEKEND MINISTRY SCHEDULE

March 23 & March 24

Lectors:

4:00 p.m. Mary Ellen Atkins, Mary Hayes

9:30 a.m. Pat Martin, Sr. Marie Cooper

Eucharistic Ministers:

4:00 p.m. Elizabeth Buckley, Nancy Finn
Joan Chapdelaine

9:30 a.m. Eduarda Zebellos, Felicidad Zebellos

Barbara Maguire

Altar Servers:

4:00 p.m.

9:30 a.m. Dylan McGrath

March 30 & March 31

Lectors:

4:00 p.m. Brigid Rubin, Dave Galvin

9:30 a.m. Karen Doyle, Terrie Welford

Eucharistic Ministers:

4:00 p.m. Fred Horne, Melissa Turner
Nancy Finn

9:30 a.m. Mary Weaver, Kevin Weaver

Felicidad Zebellos

Altar Servers:

4:00 p.m. Michael Flannagan

9:30 a.m. Michael Weaver

STATIONS OF THE CROSS

Please join us at 3:00PM each Friday for Stations of the Cross at 3:00PM on Fridays during Lent.

SOUP AND STATIONS – ST. AUGUSTIN'S

Come enjoy fellowship with other parishioners on **April 5th** with a simple Lenten meal of soup and bread following Stations of the Cross.

Stations will be at **4:30PM** (not 3:00) that Friday and the meal will follow in the St. Augustin's Parish hall.

*Every family should bring a crockpot of soup (vegetarian or fish) and some bread or rolls to share.

*Water and bowls/utensils will be provided.

Hope to see many of you there as we journey through Lent together!

FR. KRIS' KORNER



Today's Gospel reminds me of the Snickers chocolate bar commercial that has the slogan, "You're not yourself when you're hungry!" In this passage Jesus was hungry and he spotted a fig tree but when he drew closer he noticed that it was not bearing fruit and he became very frustrated. This story appears in three out of four of the Gospels, so scholars conclude that this scene must have happened, but each Gospel tells it differently. In the Gospel of Matthew, Jesus cursed the barren tree and it withered right there on the spot! In the Gospel of Mark, it wasn't even the season for the tree to have figs but Jesus cursed it anyway and it never bore fruit again; that doesn't seem fair now does it? However, in Luke's Gospel (which we read today), the gardener pleads with Jesus and begs that He give it another chance. The gardener promises to take special care of the tree and to cultivate the soil around it. He tells Jesus that he can cut it down if the tree does not bear fruit in the future. "Bearing fruit" in the Christian sense means that you can show God some concrete examples of the good you have done in this world. "Bearing fruit" also means that one's life gives evidence of being a follower of Christ through one's words and actions of love, joy, peace, patience, kindness, generosity, faithfulness; and these are always in season! Christ is calling us to bear fruit always; He will not tolerate excuses. What "fruits" are evident in your life? May this Lent give you the opportunity to do a little cultivating of your soul. Fertilize it with the nourishment of the Sacraments, with prayer, with fasting and charitable works. Prune off the dead and damaged branches of sin so that when Jesus stands before you, He may be delighted with the good fruits you have produced which contributed to making this world a better place.

Find Father Kris' columns on Facebook:
<https://www.facebook.com/stmarynewport/>

WHAT ARE YOU DOING TO MAKE YOUR LENT PLEASING TO GOD?

During Lent Jesus instructs us to "Give Alms." Here are a few suggestions of ways to live this out:

1. Feed the hungry
2. Give drink to the thirsty
3. Shelter the homeless
4. Clothe the naked
5. Visit the sick and imprisoned
6. Bury the dead
7. Donate to charities for the poor

THE WAY OF THE CROSS - FRIDAY, APRIL 12TH

St. Mary's is proud to offer a multi-media Stations of the Cross with musical performances by the three choirs of St. Mary's plus a solo by Fr. Kris von Maluski. We invite all our community to join us for this special Lenten program. Friday, April 12th at 7:00PM.



FOCUS ON PRAYER DURING LENT

During the season of Lent Jesus asks us to focus on our prayer life. We've provided Lenten Reflection Books which you can pick up at Mass. We also recommend online daily Lenten Video Reflections that will be sent directly to your email: please visit BestLentEver.com

SPECIAL DAY OF CONFESSIONS — MARCH 30TH



Catholics are urged to receive the Sacrament of Reconciliation before Easter. A special day has been set aside for confessions at St. Mary's from 8:00AM to 9:00AM and at St. Lucy's from 11:00AM to 2:00PM, Saturday, March 30th. Please note: this is the only reconciliation service we will offer before Easter other than our regular Saturday mornings at St. Mary's from 8:00AM to 8:30AM.

STEAM ACADEMY—ANNUAL SPRING TEA

All Saints STEAM Academy is holding its annual Spring Tea to benefit the school's scholarship fund. Many beautiful items from local vendors will be raffled. The tea is to be held at St. Lucy's Parish Center, 909 West Main Rd, Middletown on Sunday, March 31st at 1:00PM.



Tickets are \$15.00 each.
 For tickets and information please call
 All Saints STEAM Academy at 848-4300.

CATHOLIC CHARITY APPEAL

Our Catholic Charity in-pew solicitation will be conducted this weekend and the weekend of March 23rd & 24th. Envelopes may be taken home beforehand to fill out at your convenience. Our parish goal is \$47,000. This goal can only be reached with your sacrificial help and support. All gifts, regardless of size, help to make a difference in the lives of so many individuals. Please make checks payable to **CATHOLIC CHARITY APPEAL** and write **Parish 19** in the memo line.



Jeremiah L. Harrington, Inc.

Accounting & Tax Services

210 Bellevue Avenue
Newport, Rhode Island 02840

Jeremiah L. Harrington
EA, ATA

Phone: (401) 847-2624

Est. 1947

401/846-5200

CHRISTOPHER J. BEHAN



Attorney At Law

294 Valley Rd.,
Middletown, RI 02842

Office 846-3486 Fax 847-7150
613 Aquidneck Ave., Middletown, RI

DONOVAN & SONS, INC.

Plumbing - Heating &
Daniel D. Donovan III - President
daniel@donovans.org



GRASSHOPPER LAWN & LANDSCAPE SERVICE, LLC

You Grow . . . We Mow
Since 1978

401-846-9390

Newport, RI 02840
info@grasshopperllcnewport.com



846-0350

Grief Support • Monuments
Preplanning

Robert, Kurt & Chris Edenbach
Funeral Directors
www.memorialfuneralhome.com

O'Neill-Hayes FUNERAL HOME

ESTABLISHED 1889



465 Spring St. Newport, RI
401-846-0932
www.oneillhayes.com

ALBERTO PAINTING

Interior/Exterior
FREE Estimates

Calls answered 24 hours
401-841-5693
401-862-9844

VIKING CLEANERS

ON-SITE
DRAPERY CLEANING

846-4291

3 Carol Avenue
Newport, RI



Serving in Rhode Island since 1950



(401) 846-4826

Follow us on Facebook

www.clunyusandcanada.org



ALL AMERICAN LANDSCAPING

WHERE YOUR LANDSCAPE IS OUR REPUTATION

Your Landscape, Our Reputation
Design - Build - Maintenance

401-619-5296

www.allamericanri.com

FIFTH WARD LIQUOR

695 THAMES ST. - NEWPORT

HOURS - MON.-SAT. 9AM-10PM
SUN. 10AM-6PM

SETH MARGOLIS, OWNER

401-847-4545

FREE DELIVERY AVAILABLE



P (401) 847-2542

F (401) 849-5249



CHRIS ELECTRICAL, LTD.

Electrical Contractor

CHRIS KALIL
chris@chriselectrictld.com

62 HALSEY STREET
NEWPORT, RI 02840

www.chriselectrictld.com

GREGORY F. FATER

Attorney At Law

- Estate Planning, Wills and Trusts
- Real Estate and Zoning
- Business and Corporate Law

55 Memorial Boulevard
Newport, RI

401-848-7777

BILL SIZELAND

RE/MAX® of Newport



Residential
& Investment
Real Estate

401-848-6764

www.BillSizeland.com

catholicmatch® Rhode Island



CatholicMatch.com/RI

AVAILABLE FOR A LIMITED TIME

ADVERTISE YOUR BUSINESS HERE

Contact **Servaas Verbiest** to place an ad today!
sverbiest@4LPi.com or (800) 477-4574 x6630



WE'RE HIRING AD SALES EXECUTIVES

- Full Time Position with Benefits
- Sales Experience Preferred • Paid Training
- Overnight Travel Required • Expense Reimbursement



CONTACT US AT

careers@4LPi.com • www.4LPi.com/careers

Online Shopping
for Catholic
Gifts of Faith



www.parishstore.com

PROTECTING SENIORS NATIONWIDE MEDICAL ALERT SYSTEM

\$29.95/MO BILLED QUARTERLY

PLUS SPECIAL OFFER



CALL NOW!
1.877.801.7772

WWW.24-7MEDALARM.COM



Ad info. 1-800-477-4574 • Publication Support 1-800-888-4574 • www.4lpi.com

St. Augustin, Newport, RI 03-0693