

MIDD SOUTH CATHOLIC

The Roman Catholic Parish of Middlebury and Southbury

St. John of the Cross CAMPUS

1263 West Street
Middlebury, CT 06762
(203) 758-2659



— www.midsouthcatholic.org —

Sacred Heart CAMPUS

910 Main St. South
Southbury, CT 06488
(203) 264-5071



DECEMBER 25-26, 2021

Christmas
Feast of the Holy Family

A Christmas

Gift

to celebrate—
the love of God
through an
encounter
with

Jesus

Welcome to our Christmas Service here at Midd-South Catholic! Whether you are joining us in person or online, it is an honor for us that you open your heart to worship on this holy day celebrating the birth of Jesus once again.

While this year continues to be different and challenging to say the least we appreciate these moments that remind us of the faithful love of God. Through all circumstances Jesus Christ is the same yesterday, today, and forever. So we take this moment to celebrate God's love becoming human for us.

We are delighted that you have chosen to share this sacred time with us and hope that someone or something in your experience here reveals an encounter with the Gift that is celebrated today. Our parish seeks to be the light and presence of peace, hope, joy and love that a community of disciples of Jesus Christ is called to be. Through our celebration of the Eucharist, Faith Formation, Pastoral Care, Small Group Ministries of prayer and spirituality and Social Outreach we seek to foster a personal relationship with Jesus Christ for all who enter here.

Merry Christmas!

It is our pleasure to serve and journey with you. May God bless our world with healing, hope and peace!

Father Symolon, Ami, Mary,
Donna, Helen, Jen, Jenn, Tim, Allan,
Don, Mark, Chris, Brian, Kim, Brendan,
Fran, Andrea, Jay, and Renee

PASTORAL STAFF

REV. LAWRENCE SYMOLON, Pastor
pastor@mscatholic.org

AMI CONLAN, Pastoral Associate
ami@mscatholic.org

Welcome! Mid-South Catholic is a welcoming and accepting Catholic community that fosters a personal relationship with Jesus Christ and lives that faith through love and service.

SOCIAL OUTREACH

A gift of light for those experiencing need, poverty, isolation and hunger...

Ministry to Haiti Twin relationship with Our Lady of Seven Sorrows in Grand Boulage, Haiti.

Southbury & Middlebury Food Bank Support the food Collection drive and stocking supplies.

Homeless Outreach Donations and on-site service through a social worker who ministers to those homeless people who will not go to the shelter but live outside.

Covenant To Care Supports a social worker and the Southbury Needy Fund to help people in distress or difficulty.

Sandwich Making for St. Vincent de Paul Mission

St. Vincent De Paul Mission Meals Prepare a meal in our homes and serve it at the shelter.

PASTORAL CARE

A gift of light for those experiencing difficult moments in their lives...

Friendly Visitors Available to visit you weekly to share a cup of coffee and chat for an hour.

Stephen Ministry Supervised and trained ministers for the challenging times of life.

Career Transition Ministry Offers support for under/ unemployment or career changes.

Bereavement Ministry Individual and group support for grief.

Prayer Shawl Ministry Hand made shawls for anyone in need of prayer.

Parish Nurse Ministry Workshops on health, healing and advanced life care directives.

Catholics Coming Home Have you drifted away from the practice of your faith?

LITURGICAL

Music Ministry Join one of our wonderful music ministries such as the adult choirs and ROC Mass Band.

Readers & Eucharistic Ministers

SMALL GROUPS

Spirituality, Prayer and Faith Sharing...

LIFT (Ladies in Faith Together)

A group of women that meet weekly at the Sacred Heart Campus to pray, study, share, and provide service. It is also a social gathering, as well as a prayer-centered, learning experience.

Little Rock Bible Study provides opportunity for developing a greater understanding of Sacred Scripture, an awareness of the presence of God within it, and an increasing awareness of how the Bible can be applied to daily life.

Men's Ministry All ages are welcome. A start with fellowship and prayer, followed by a reading of the upcoming Sunday's gospel reading, followed by discussion groups.

Women Sharing Wisdom A spirituality group for women who are interested in reflecting on their life in light of their faith and the Scriptures.

Mom's Bible Study For women who have an interest in scripture and faith sharing.

The Women's Group at SJCC Sharing of faith and service.

FAITH FORMATION

A gift of light for those seeking a lifelong journey of faith...

G.I.F.T. (Growing In Faith Together) An intergenerational and whole community faith formation program for ages 6 to 106!

Celebration Of Sacraments Our parish prepares, ministers and invites all to participate in these sacred experiences that connect us with the love of God through Jesus Christ and the Church. First Reconciliation, First Holy Communion and Confirmation, Adult RCIA, Baptism; any Sacraments for the first time.

Children and Teen Ministry Mission Trip service.

J-Walking and service programs for post-confirmation ages.

ROC Mass featuring teens/young adults in liturgical roles.



Today is born our Savior, our Savior Christ the Lord

ONCE IN ROYAL DAVID'S CITY

IRBY



1. Once in roy - al Da - vid's cit - y Stood a low - ly
2. He came down to earth from heav - en Who is God and
3. And through all his won - drous child - hood He would hon - or
4. For he is our child - hood's pat - tern, Day by day like
5. And our eyes at last shall see him, Through his own re -



1. cat - tle shed, Where a moth - er laid her ba - by
2. Lord of all, And his shel - ter was a sta - ble,
3. and o - bey, Love and watch the low - ly maid - en
4. us he grew; He was lit - tle, weak, and help - less,
5. deem - ing love; For that child so dear and gen - tle



1. In a man - ger for his bed. Mar - y was that
2. And his cra - dle was a stall. With the poor and
3. In whose gen - tle arms he lay. Chris - tian chil - dren
4. Tears and smiles like us he knew: And he feels for
5. Is our Lord in heav'n a - bove: And he leads his



1. moth - er mild, Je - sus Christ her lit - tle Child.
2. mean and low - ly Lived on earth our Sav - ior ho - ly.
3. all should be Kind, o - be - dient, good as he.
4. all our sad - ness, And he shares in all our glad - ness.
5. chil - dren on To the place where he has gone.

Text: 87 87 77; Cecil Frances Humphreys Alexander, 1818-1895, alt. Music: Henry J. Gauntlett, 1805-1876.

O COME, ALL YE FAITHFUL

ADESTE FIDELES
Arranged by Tom Booth

Verses



1. O come, all ye faith - ful, joy - ful and tri - um - phant, O
 2. † Sing, choirs of an - gels, sing in ex - ul - ta - tion, †
 3. † Yea, Lord, we greet thee, born this hap - py morn - ing, †
 4. *Ad - é - ste fi - dé - les, láe - ti tri - um - phán - tes, Ve -*



1. come ye, O come ye to Beth - le - hem;
 2. Sing, all ye cit - i - zens of heav'n a - bove!
 3. Je - sus, to thee be all glo - ry giv'n;
 4. *ní - te, ve - ní - te in Béth - le - hem.*




1. Come and be - hold him, born the King of an - gels;
 2. Glo - ry to God, all glo - ry in the high - est;
 3. Word of the Fa - ther, now in flesh ap - pear - ing;
 4. *Na - tum ví - dé - te Re - gem an - ge - ló - rum.*

Refrain



O come, let us a - dore him, O come, let us a - dore him, O
Ve - ní - te, a - do - ré - mus, ve - ní - te, a - do - ré - mus, ve -



come, let us a - dore him, Christ, the Lord! } O come, let us a -
ní - te, a - do - ré - mus Dó - mi - num. }



dore him! O come, yes come, let us a - dore him!

Text: Irregular with refrain; John F. Wade, ca. 1711–1786; tr. by Frederick Oakeley, 1802–1880, alt.
 Music: John F. Wade; arr. © 2013, Spirit & Song, a division of OCP. All rights reserved.

723518-A One License

(*Fanfare*) To - day is born our Sav - ior,
our Sav - ior Christ the Lord.

Text: Refrain, *Lectionary for Mass*, © 1969, 1981, 1997, ICEL
 Music: *The Collegeville Psalter*, © 2017, Paul Inwood.
 Published and administered by Liturgical Press, Collegeville, MN 56321. All rights reserved.

SILENT NIGHT

STILLE NACHT
 Arranged by Tom Booth

1. Si - lent night! Ho - ly night! All is calm, all is bright
2. Si - lent night! Ho - ly night! Shep-herds quake at the sight;
3. Si - lent night! Ho - ly night! Son of God, love's pure light

1. Round yon Vir - gin Moth - er and child! Ho - ly in - fant so
2. Glo - ries stream from heav - en a - far; Heav'n - ly hosts sing
3. Ra - diant beams from thy ho - ly face, With the dawn of re -

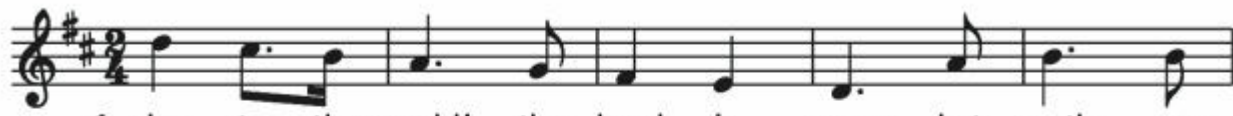
1. ten - der and mild, Sleep in heav - en - ly peace, Sleep in heav - en - ly
2. "Al - le - lu - ia! Christ the Sav - ior is born, Christ the Sav - ior is
3. deem - ing grace, Je - sus, Lord, at thy birth, Je - sus, Lord, at thy

1. peace.
2. born."
3. birth, Je - sus, Lord, at thy birth.

Text: Irregular; Joseph Mohr, 1792–1849; tr. by John F. Young, 1820–1885.
 Music: Franz X. Gruber, 1787–1863; arr. © 2013, Spirit & Song, a division of OCP. All rights reserved.

JOY TO THE WORLD

ANTIOCH



1. Joy to the world! the Lord is come; Let earth re -
2. Joy to the world! the Sav - ior reigns; Let us our
3. He rules the world with truth and grace, And makes the



1. ceive her King; Let ev - 'ry heart pre - pare him
2. songs em - ploy; While fields and floods, rocks, hills and
3. na - tions prove The glo - ries of his righ - teous -



1. room, And heav'n and na - ture sing, And heav'n and na - ture
2. plains Re - peat the sound - ing joy, Re - peat the sound - ing
3. ness, And won - ders of his love, And won - ders of his



1. sing, And heav'n, and heav'n and na - ture sing.
2. joy, Re - peat, re - peat the sound - ing joy.
3. love, And won - ders, won - ders of his love.

Text: CM with repeats; based on Psalm 98; Isaac Watts, 1674–1748, alt.
Music: T. Hawkes' *Collection of Tunes*, 1833; George Frideric Handel, 1685–1759.

723518-A One License

New Year's MASS SCHEDULE

NEW YEAR'S EVE

5 PM – Sacred Heart

NEW YEAR'S DAY

9 AM – St. John of the Cross
(Solemnity of Mary)

5 PM Vigil Mass – Sacred Heart
(Epiphany)

SUNDAY, JANUARY 2

9 AM – Sacred Heart
11 AM – St. John of the Cross

A RECEPTION FOR FATHER SYMOLON

*Please join us to thank Father Symolon
and to celebrate his new assignment.*

We are grateful for the time you spent with all of us!

Saturday, January 1st, Sacred Heart Church

after the 5 PM Mass, Parish Hall

Sunday, January 2nd, St. John of the Cross

after 11:00 AM Mass, Father Fanning Hall

With the Women's Group and
Middlebury Knights of Columbus



Locally owned and operated

MUNSON-LOVETERE FUNERAL HOMES & CREMATION SERVICES, INC. 203-263-2146 www.munsonlovetererfuneralhome.com | southbury.ct.petpassages.com



TRUE VALUE • RENTALS POWER EQUIPMENT

190 Main St., South, Southbury, CT Ph: (203) 264-4775 • Fax: (203) 264-1870 www.chatfieldpower.com

Sam Kratzer Proprietor 180 Main St., Southbury, CT Wine & Spirits 203-264-8891 sam@lakewineandspirits.com www.lakewineandspirits.com We Also Carry Cigars

We've Missed You! Welcome Back to Mass

Stay connected to our faith community no matter where you are by signing up to get our bulletin delivered straight to your email! www.ParishesOnline.com

HEARING AID SPECIALISTS of CT. Hearing Technology Specialists



1449 Old Waterbury Rd., Ste 303, Southbury 203-463-2183 www.HearCT.com

Carol W. Maksimow BS, BC-HIS Founder & Director • Audioprosthologist Hear Your Best... With Us!

"I Understand Hearing Loss Because I Have It Myself"



Custom Quality Homes Since 1981

Lots Sold Separately Your Plans or Ours Excavating Available We also do Additions, Home Repairs, Remodeling, Updates 203-206-6670 • Mike Ferrara 203-725-7100 • Nick Ferrara 120 SKYLINE DRIVE, MIDDLEBURY, CT 06762

Franciscan Ever There Care Providing Non-Medical In-Home Care Light Housekeeping, Cooking, Errands, Hands On Care, 24 Hour Care 203-754-0485 evertherecare.org

BUTKUS PLUMBING Free Estimates • Jobs Big & Small REPAIRS • RENOVATIONS FAUCET • TOILET MAINTENANCE JOSEPH D. BUTKUS ~ owner/operator P1 204815 203-264-0559 Insured

Barnhill Kennels Pet Boarding (203) 263-4496 30 Cedar Grove • Woodbury, CT 06798

BEDARD & COMPANY, PC CERTIFIED PUBLIC ACCOUNTANTS Daniel L. Bedard, CPA Providing value added services to businesses and individuals 203-264-4454 • 30 Poverty Road, Southbury, CT www.bedardcpcpas.com

midconwhome.com 203.758.2471 Family Owned & Operated Offering Short & Long Term Care 778 Middlebury Rd., Middlebury

LENKOWSKI LONERGAN & CO. LLP CERTIFIED PUBLIC ACCOUNTANTS & CONSULTANTS Leonard M. Romaniello, Jr., CPA, CFP, CFE, CFF, MST Managing Partner 1579 Straits Turnpike, Suite 2D, Middlebury, CT 06762-1835 www.LenkowskiLonerGANCPA.com

William Pitt Sotheby's INTERNATIONAL REALTY Patti Guarantano, Your Local Real Estate Expert 203.231.9288 | pguarantano@williampitt.com Litchfield Brokerage | pattiguarantano.williamspitt.com

The Law Office of Lisa E. Wnuck, LLC 493 Heritage Road, Southbury, CT 06488 Probate and Estate Administration • Trust Settlement Georgetown Law '87 • www.southburylaw.com • 203-586-1445

Naugatuck Valley Ear, Nose & Throat Associates... Raymond E. Winicki, MD James D. Williams, MD Kimberly Casagni, APRN Marissa Stankus, PA-C 171 Grandview Ave., Suite 201 Waterbury, CT 06708 203.578.4630 • www.naugatuckvalleyent.com

Make your financial future a priority. John J Holmes Financial Advisor 203-586-1264 20 Sherman Hill Rd., Woodbury, CT Edward Jones MAKING SENSE OF INVESTING Member SIPC

Kevin P. Thornton ATTORNEY AT LAW Service You Can Trust Since 1979 Wills • Trusts • Estate Planning • Real Estate • Personal Injury 493 Heritage Road, Suite 3C, Southbury | kpthorntonlaw@gmail.com 203-264-8225

Support our ADVERTISERS

FREE AD DESIGN WITH PURCHASE OF THIS SPACE CALL 800.477.4574

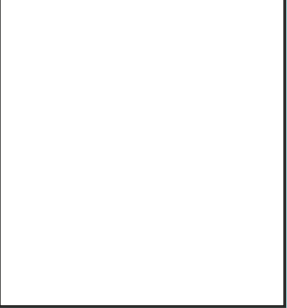
AVAILABLE FOR A LIMITED TIME! ADVERTISE HERE NOW! Contact Mary Hoffman to place an ad today! mhoffman@4lpi.com or (800) 477-4574 x6340

EXPERIENCED ELECTRICAL SERVICE AT REASONABLE COST PEDRO J. FERRER, OWNER Fully Licensed & Insured LIC#FEI-0200850 203-733-3310 • 845-913-5175 FerrerElectricLLC.com

MOF Moore, O'Brien, & Foti Attorneys at Law Garrett M. Moore, Sr. gmoore@mojylaw.com 891 Straits Turnpike Middlebury, CT 06762 203-272-6352 Fax: 203-272-9273

Ask us about the Catholic Funeral Plan 700 MIDDLETOWN AVE. NORTH HAVEN 203-239-2557 CCACEM.ORG

GOOD HILL MECHANICAL SERVICES INC. 53 Main St. So. Woodbury 203.263.4557 Equipment Upgrades & Maintenance Plans to Reduce Fuel & Energy Consumption FREE Estimates 24/7 Emergency Services Lic./Insured #1056,P1#203229,51#30206,5M1#138 Daniel T. Honan - Funeral Director, Manager Honan Funeral Home 58 Main Street, Newtown, Connecticut 06470 203-426-2751 www.honanfh.com honanfuneralhome@sbcglobal.net



CROWLEY AUTOMOTIVE GROUP Located in Bristol & Plainville Buy or Lease your next car or truck from us! We have just what you're looking for! Extended Service Hours! Open 6 Days A Week Until 8PM! Open Sunday 11 to 4PM! CrowleyAuto.com



750 Main Street South | Southbury
CarpinoCares.com | (203) 264-1991
 Conveniently located near Sacred Heart Church
 Burials • Cremations • Preplanning • Monuments

Founder/Parishioner:
 Richard Carpino
 Directors:
 Matt Bailey, CFSP, Jayson Dahlgard,
 Andrea Cappelletto, Karen Sagarino,
 Robert Bailey

tim conlan co.
 PLUMBING • WATER PUMPS
 HEATING
 www.timconlanco.com
203-264-7200
 CT-S7-309078 CT-P1-204694

TENDER YEARS TOO!
 CHILD DEVELOPMENT CENTER
 (203) 262-6426 TenderYearsToo@att.net
 41 Poverty Rd., Unit 76G • Southbury, CT
 Karen Hummel • Teresa Paternoster
 Co-Owners/Directors

UNITED AUTO SALES & SERVICE INC
CELEBRATING 68 YEARS
203.756.8851
 M-F 8-8 | SAT 8-1
219 CONGRESS AVE., WATERBURY CT
LATE MODEL USED CARS



For All Your Wine & Spirits Needs
SPS
 Southbury Package Store
 27 Oak Tree Road
 Southbury, Connecticut
203-405-6593
 www.southburypackages.com

SOUTHBURY DENTAL CARE
 (203) 264-0678
 77 Main St. N., 209 Playhouse Corner
 Southbury, CT 06488
 General Dentistry • Cosmetic Dentistry • Invisalign®
Dr. Claire Coffey Toon www.SouthburyDental.com

THOMAS M. SUTNIK
 ATTORNEY AT LAW
 Wills, Trusts, Estate Planning and Estate Settlement
Southbury Office
 3 Pomperaug Office Park, Suite 203 • (203) 405-6234

Laser Vision Correction Behavioral Optometry
 Neurorehabilitative Optometry Contact Lenses
DR. JOHN J. PULASKI F.C.S.O.
 Family Doctors of Optometry
 Eye Care Center of Waterbury
 625 Wolcott Street, Waterbury, CT
(203) 754-8339

Better Homes and Gardens REAL ESTATE
BANNON & HEBERT
203-758-1300
 590 Middlebury Road, Middlebury, CT
 www.bannonandhebert.com

MICHAEL J. MCVERRY
 ATTORNEY AT LAW
 MICHAEL@MJMLAW1.COM
 35 PORTER AVENUE
 P.O. BOX 578
 NAUGATUCK, CT 06770
 PHONE 203-723-7435
 FAX 203-723-9995

ADT-Monitored Home Security
 Get 24-Hour Protection From a Name You Can Trust
 Burglary • Flood Detection
 Fire Safety • Carbon Monoxide
 1-855-225-4251

Local Pest Control for
 Ants, Ticks and Mice
ENVIRO CARE PEST CONTROL
 860-945-3180
 \$25 off for new customers with this ad
 www.envirocarepestcontrol.net

Accepting new home-care
 clients from MA & CT.
 If you want the best care for your loved one, call:
J & J Best Care at Home Inc.
 2 Pomperaug Office Park, Suite 101, Southbury
203-586-1527
 www.jnjbestcare.com

J. THURSTON FUEL
 www.jthurstonfuel.com
 Premium Fuel Oil • 24 Hour Service
 203-720-3028 • 203-753-HEAT (4238)
 Owners: James F.Thurston, III & Jay Carter

Perry S. Kest, D.D.S. & Associates
 Family, Cosmetic & Implant Dentistry
 (203) 264-9606
 Offering Invisalign
 250 Main Street South
 Southbury (The Commons)

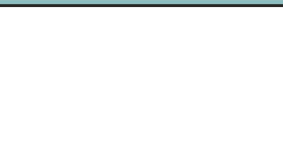
Antonio Lepore Jr, DDS
 Mimi DeLessio-Matta, DMD
 Elina Bilman, DMD
www.kidstoothcare.com
 One Pomperaug Office Park Ste. 206
 Southbury, CT 06488
PH (203) 264-1497 • FX (203) 264-4039

WE'RE HIRING
 AD SALES EXECUTIVES
BE YOURSELF. BRING YOUR PASSION.
WORK WITH PURPOSE.
 • Work-Life Balance • Paid Training
 • Full-Time with Benefits • Some Travel
 • Serve Your Community
 Contact us at careers@4lpi.com
 www.4lpi.com/careers

Jeff Ahlberg,
 Realtor Associate
(203) 586-9881
 Jeffahlberg77@gmail.com
 590 Middlebury Rd.,
 Middlebury CT 06762

DANA A. D'ANGELO
 ATTORNEY AT LAW
 SPECIALIZING IN REAL ESTATE,
 WILLS AND PROBATE
 203-598-3336
 20 WOODSIDE AVENUE, MIDDLEBURY
 DANANGO.MIDDLEBURY@SNET.NET
 PARISHIONER • WWW.DANGELOLAW.ORG

THE WATERMARK AT EAST HILL
 INDEPENDENT LIVING • ASSISTED LIVING • MEMORY CARE
 REHABILITATION & SKILLED NURSING
 Call To Learn More (203) 262-6868



Holly Poglitsch, MS, LPC, LADC
 Psychotherapist
 Individuals, Couples & Families
 Office Hrs. by Appointment 203-518-3088
 450 Heritage Rd., Suite 3E • Southbury, CT 06488
 Email: hpoglitsch@yahoo.com

(203) 758-9988 • CELL (203) 206-6941
MIDDLEBURY SEPTIC, LLC
 24 HOUR SERVICE AVAILABLE
 SERVING LITCHFIELD, FAIRFIELD & NEW HAVEN COUNTIES
 P.O. BOX 238 • 9 SANDY BEACH RD.
 MIDDLEBURY, CT 06762
MICHAEL A. WEGLARZ Owner

Acher Interiors
 Carpet • Tile • Wood Floors
 Window Treatments
 (203) 264-8155 • www.acher.com
 205 Main St. South, Southbury, CT

Pray for Peace

LPL Financial
David C Mulhall, CPA
 Investment Advisor
 www.lpl.com/david.mulhall
 Member FINRA/SIPC
203-527-6134
 530 Middlebury Road, Suite 203A
 Middlebury, CT 06762

PHONE: 203-264-6501 Fax: 203-264-3062
STONE
 CONSTRUCTION CO., INC
 STATE LICENSED • FULLY INSURED • Dependable Service!
168 Main Street South • P.O. Box 428 • Southbury, CT 06488-0428

4 Corners
 www.4cornersstore.com
 600 Middlebury Road (Rt. 64)
 Middlebury, CT

Sullivan Brothers, LLC
 Building on a strong foundation since 1939
John A. Sullivan OWNER
 COMMERCIAL AND RESIDENTIAL
 BUILDING & RESTORATIONS
 203-879-4555 info@sullivan-brothers.com
 www.sullivan-brothers.com
 One Wolcott Rd. / Wolcott, CT

SHOWCASE BEAUTY INC.
Don't Just List it Showcase it!
 Jackie Desmarais, GRI, ABR
 203-509-6502 listorbuywithjackie@gmail.com
 Beth Santos, GRI
 203-206-0905 myrealtorbethsantos@gmail.com

ROB ROZZ
 Full-Service Plumbing & Water Solutions
 Well Pumps • Tanks • Water Filters • Heaters
 ANYTHING TO DO WITH YOUR WATER!
 Rob Rosomando
203-304-8281 • www.robross.com
 Licensed & Insured P1-0287179

Bob Heusted
 Parishioner
Middlebury Fine Wines & Spirits
 1255 Middlebury Rd. P: 203-527-6651
 Middlebury, CT F: 203-528-3551

support our ADVERTISERS

SUPPORT OUR ADVERTISERS!