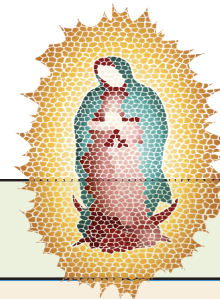


*NUESTRA SEÑORA DE GUADALUPE
DEL VALLE DE POJOAQUE*
9 Grazing Elk Drive, Santa Fe, NM 87506
April 19, 2026



Parish Administrator: Rev. Franklin D. Pretto
Pastor Emeritus: Msgr. Jerome Martinez y Alire

Parish Office Phone, Webpage & Hours: (505) 455-2472; www.facebook.com/nsdg.church

Open Monday, Wednesday and Thursday 10am–12 noon and 1:30pm–4:30pm

Office is Closed on Tuesday and Friday– Please leave a message and the call will be returned next business day.

Rev. Franklin D. Pretto is out of the Office on Monday and Tuesday Morning

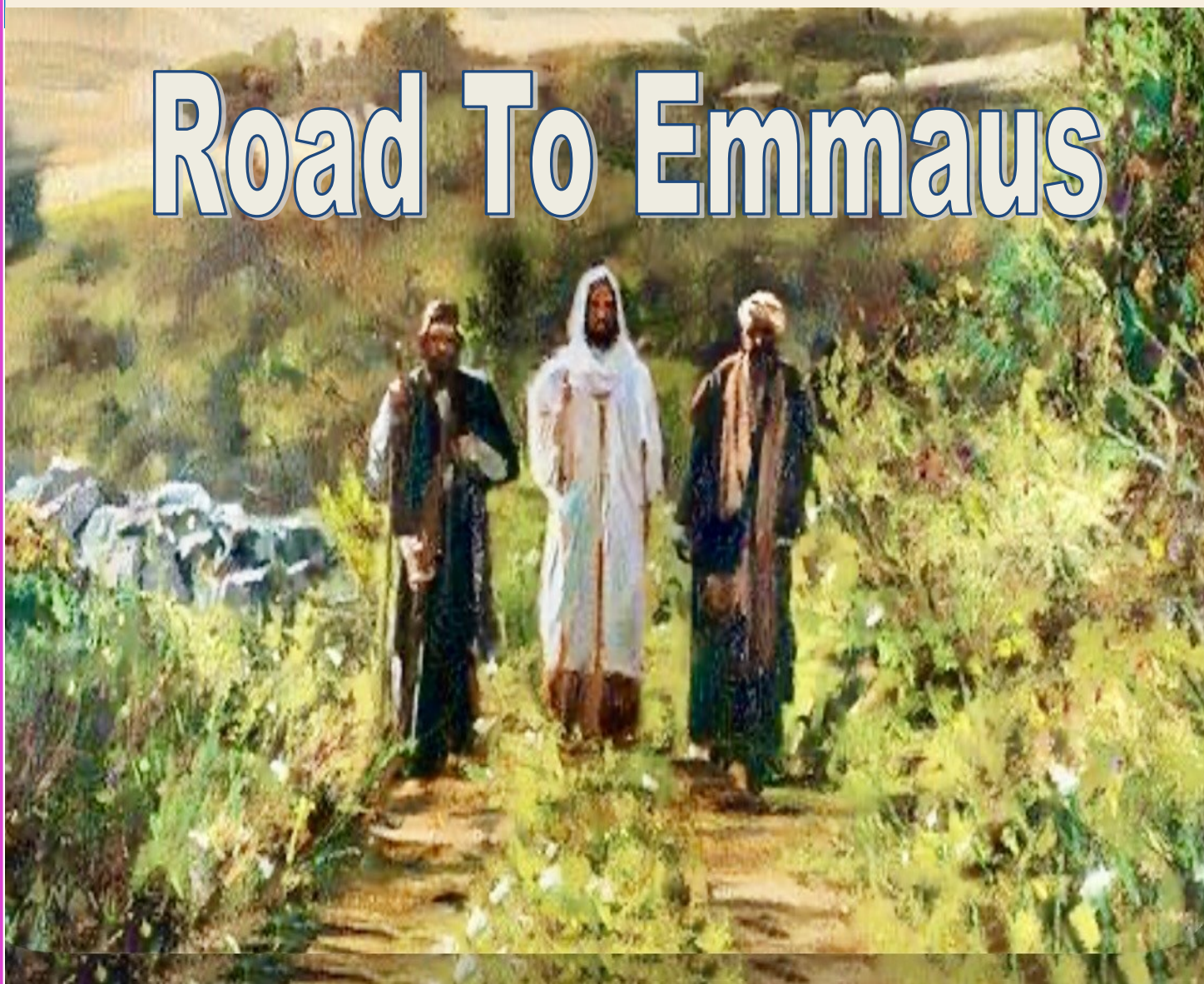
Monsignor Jerome is available to meet by appointment ONLY.

Religious Education: Zenda Vargas (505) 455-2267 email: nsdgzvargas@gmail.com

Deacons: Donald Yardman 455-7872 Reuben Roybal 455-2472, John Archuleta 455-7619, Greg Romero 455-2472

Saint Vincent de Paul: Call or Text (505) 490-5520 For Any Type of Assistance

Road To Emmaus



CONFESSIONS: Saturdays:

MASSES: Saturdays:

Sundays:

Weekdays:

2:00p.m. Pojoaque-Nuestra Senora de Guadalupe

4:00p.m. El Rancho-San Antonio de Padua-Spanish Mass

5:00p.m. Spanish Video Mass-Nuestra Senora de Guadalupe

5:30p.m. Nambe Pueblo-Saint Francis of Assisi-English Mass

8:30a.m. Nambe-Sagrado Corazon de Jesus-English Mass

9:00a.m. English Video Mass-Nuestra Senora de Guadalupe

10:30a.m. Pojoaque-Nuestra Senora de Guadalupe-English Mass

11:30a.m. Pojoaque-NSDG Tue., Wed., and Thu. English Mass



**MASS INTENTIONS
THIS COMING WEEK
AND WEEKEND
April 21 – April 26**

Tuesday, April 21, 11:30a.m. Pojoaque

- † Ymelda Santos by Vince Nasca
- † Mary V. Tapia (BD) & Mino Romero
by Ed & Margie Tapia & Family
- † Nena Romero, Paula Sanchez & Florencio Romero

Wednesday, April 22, 11:30a.m. Pojoaque

- † Olivia & Darrell Kessler; Dolores Duran
by Annabelle Rivera
- † Ignacio “Nacho” Medina by Request
- † Phil & Esther Martinez by The Family

Thursday, April 23, 11:30a.m. Pojoaque

- † Ernesto Herrera (3Yr.A), Florencio & Francisco
Romero by The Garcia Family
- † Allen Grace (3Yr.A); Martin & Alfred Trujillo
by Loyola & Patricia Trujillo
- † Cleo & Clarissa Castellano; Manuelita Herrera
by Gabriel & Berlina Herrera

Saturday, April 25, 4:00p.m. El Rancho-Span. Mass

- † Kathy Lopez (4Yr.A), Fermin Torres (BD)
& Chastity Bowie (BD) by The Family
- † Albert Lujan, Lydia Roybal & Mary Lou Lujan
by Mary Ann Trujillo
- † Ignacio “Nacho” Medina, Arsenio Trujillo Jr.,
& Adrian Escobedo by Celina & David Ortiz

5:00p.m. Pojoaque-Spanish Video Mass

- † David & Hilda Pretto by The Family
- † Gregorio & Nelda Martinez; Bernadette Apodaca
by The Family
- *† Lena Baca & All Living & Deceased Family
Members by The Family

5:30p.m. Nambe Pueblo-English Mass

- † Arturo F., Miquela & Francisco Romero
by The Family
- *† Porter & Rodriguez Families by The Family
- † Carmen Herrera (BD), Mino Romero
& Eloy Burger Herrera by The Family
- † Willie Trujillo (12Yr.A) by Tim & Louise

Sunday, April 26, 8:30a.m.-Nambe-English

- † Pablo & Antonia “Toni” Romero (6 months)
by Deacon Donald & Elaine Yardman
- † Gino Valdez (BD), Melissa Martinez
& Nikki Valdez by Pete & Molly Valdez
- † Kevin Chavez (BD) & Celedon y Nestora Lujan
by The Chavez Family

9:00a.m.-Pojoaque-English Video Mass

- † Mary Kay Keene, Toby Quinley & Charles McJilton
by Joanne Frey
- * Health of Meg O’Brien by Joanne Frey
- † Francisco A., Francisco E. & Priscilla Vieira
by Casilda Vieira
- † Scott, Dee & Vickie Sealy by Pat Sealy

10:30a.m. Pojoaque-English Mass

- † Ignacio “Nacho” Medina by Request
- † Melisa Spangler by Request
- † Dirk Keefe by Request
- † Florencio Romero & Armando Ortiz
by Mariano & Henrietta Tixer

ABUSE AWARENESS TRAINING FOR ADULTS:

Attention all members of various organizations that serve in the church. If you are 18 and older you are required to take the online course *Abuse Awareness Training: Creating a Safe Environment Workshop*, sponsored by the Archdiocese of Santa Fe. Visit archdiosf.org; first click “Links”, then click VIRTUS Child Protect Training. At the end of the Training download a Certificate of completion and send it to the Parish Office. Workshops are good for five years. If you are not sure if you are up to date, call the Parish Office at (505) 455-2472 to check your status.

FOR MARRIAGE WEEKEND PREPARATIONS

Please visit www.familylifem.org to register **MARRIAGE PREPARATION RETREATS** Please contact the Hispanic Ministry Office (505) 831-8117 **PRE-CANA CLASSES**

Saint Anne Parish in Santa Fe (505) 690-7451

For questions, please contact the Family Life Office at (505) 831-8117 or email at ydurand@asfnm.org

BAPTISM CLASSES: San Isidro Catholic Church in Santa Fe at the Parish Center; English Classes 3rd Thursday of the month 6:00p.m.; Spanish Classes last Tuesday of the month 6:00p.m. Please call 505-471-0710 to register.

SAN JUAN DIEGO CHAPEL The Chapel is open daily, 6:00a.m. to 12:00p.m., for ALL who would like to sit in prayer throughout the day. Masks are optional but are highly recommended because of the seating distance. First Friday 8:00a.m. to 12:00p.m. Daily Adoration 9:00a.m. to 10:00a.m.

ANNUAL CATHOLIC APPEAL 2026 “FEARLESS IN FAITH, BOUNDLESS IN LOVE” Goal for Parish is \$25,000, which is \$500 LESS than last year. Total Currently Paid \$4,474. We are committed to sharing our financial gifts with others. Thank you to all who contribute.

CONTACT INFO TO SCHEDULE RETREATS

Facilitator Sr. Paula Gallagher, IHM, (505) 670-0240 or email musicwrit@aol.com

MASSES AT NAMBE PUEBLO: If the Pueblo closes on a weekend, Mass Intentions will be moved to the next weekend.

TO VIEW OUR PARISH BULLETIN

Follow This Link: www.parishesonline.com

REFLECTION: THIRD SUNDAY OF EASTER (Sunday of Divine Mercy): The Third Sunday of Easter focuses on themes of restoration, recognizing the Risen Lord in everyday life, and a call to service. Gospel reflections often highlight Jesus feeding his disciples, asking Peter to affirm his love three times to heal his previous denials, and charging him to “feed my sheep,” emphasizing mercy, leadership, and missionary discipleship. Jesus brings the disciples, specifically Peter, back from the brink of despair. The charcoal fire brings to mind the setting of Peter’s denial, here he is given a chance to repent and affirm his love for Jesus. The threefold question to Peter corresponds to the threefold denial, offering healing and a chance to begin again. Jesus shifts from the miracle of the fish to the mission of leadership, showing that love for him must be shown through service to his followers. The disciples did not immediately recognize Jesus on the shore, similar to the Emmaus story. Fishing signifies the church’s ongoing mission, with Peter leading the way as shepherd.

DAILY READINGS FOR: April 19 – April 26**Sunday:**46:ACTS2:14-33 PS16:1-11 1PT1:17-21LK24:13-35**Monday:** 273 ACTS 6:8-15 PS 119:23-30 JN 6:22-29**Tuesday:** 274: ACTS 7:51-8:1a PS 31:3cd-21ab JN 6:30-35**Wednesday:** 275:ACTS 8:1b-8 PS 66:1-7a JN 6:35-40**Thursday:** 276: ACTS 8:26-40 PS 66:8-20 JN 6:44-51**Friday:** 277: ACTS 9:1-20 PS 117:1bc,2 JN 6:52-59**Saturday:** 555: 1PT 5:5b-14 PS 89:2-17 MK 16:15-20**FAMILY CONNECTION**

Families, as the domestic church, have the opportunity to make the family meal a time of prayerful encounter with one another and with Jesus. At a family meal we share our experiences of the day and connect them with the experiences of others in the family. We can also enjoy the meal as an opportunity to reflect upon our family life in light of Scripture. At their best our family meals can connect us to Jesus too. Choose a family meal this week to share another's experiences of the week in a special way. Perhaps invite family members to plan and prepare the meal together. Begin the meal by reading today's Gospel. As you eat, talk together about how the disciples discussed their experiences in Jerusalem and how they came to understand them differently when Jesus interpreted those events in the light of Scripture.

ENVELOPE USAGE

By using your Church Offering Envelope **OR** a plain Envelope with your envelope number, you are indicating your presence at Mass. What you put in the envelope is between you and God. Parishioners are asked to include full name, envelope number, and address. **Thank you for your support.**

JORNADA DE FE meets Saturdays from 9:00a.m.-3:00p.m. St. John the Baptist Church in Santa Fe everyone is welcome.

SACRAMENT OF FIRST COMMUNION will be celebrated on May 1st, 5:30p.m. at the Pojoaque Church.

SACRAMENT OF CONFIRMATION will be celebrated on May 8th, 6:30p.m. at Holy Cross Church.

ANOINTING OF THE SICK every third weekend of the Month. In Nambe Pueblo, Nambe & Pojoaque; after the celebration of the Mass. In El Rancho; before the Mass.



MESSAGE FROM MONSIGNOR: I wish to thank all of you who attended my 50th Anniversary Mass of Priesthood. I would also like to thank each one of you who prayed for me, sent beautiful cards, flowers, plants and gifts. I Love You!

BLESSED SACRAMENT ADORATION May 1st

Please come and spend one hour with Jesus! My sweetest Joy is to be in the presence of Jesus in the Holy Sacrament. I beg that when obliged to withdraw in body, I may leave my heart before the Holy Sacrament. How I would miss out Lord, if He were to be away from me by His Presence in the Sacrament!

COLLECTION FOR THE WEEKEND OF**April 4 and April 5**

Sunday Envelope	\$9,049.00	Holy Thurs.	\$358.00
Building Fund	\$2,257.00	Good Fri.	\$ 1,200.00
St. Vincent de Paul	\$ 245.00		
Children's Collection	\$ 116.57		
Rice Bowls	\$ 340.10		
Other ASF Collections	\$ 45.00		

***Please Note:** These totals may be adjusted as they are deposited, these adjustments occur at the bank and include insufficient funds, etc. Final collection amounts are totaled on a yearly Contribution Report and are available to parishioners at the end of each year.

Thank you for your continued generosity. May God Bless You!

Instead of ON LINE GIVING, you can set up **BILL PAY** through your Bank or Credit Union to have a donation sent weekly, monthly, or annually to support our Parish.

PARISH BIBLE STUDY CLASSES HAVE BEGUN

Classes are held in Classroom 2 every Tuesday morning at 9:00a.m. and evening classes at 6:00p.m. We will be studying Paul's Letters Bring your Bible and a friend.

(Deacon Donald)

SUNDAY GOSPEL REFLECTION

First Reading: ACTS of the Apostles 2:14,22-33 Peter and the apostles that Jesus has been raised from the dead.

Responsorial Psalm: 16:1-2,5,7-11 God will show us the path of life.

Second Reading: 1 Peter 1:17-21 You were saved by Christ's sacrifice.

Gospel Reading: Luke 24:13-35 Jesus appears to two disciples who are walking to Emmaus.

On most Sundays during the Easter season, our Gospel is taken from the Gospel of John. This week's Gospel, however, is taken from the Gospel of Luke. Today's Gospel shows us how the first community of disciples came to believe that Jesus had risen from the dead. In these stories we gain insight into how the community of the Church came to be formed. When we read today's Gospel, we may be surprised to learn that these friends of Jesus could walk and converse with him at some length yet not recognize him. Again we discover that the risen Jesus is not always easily recognized. Cleopas and the other disciple walk with a person whom they believe to be a stranger; only later do they discover that the stranger is Jesus. We learn that the first community met and recognized Jesus in the breaking of the bread, just as we meet Jesus in the Eucharist. We can imagine the feelings of the two disciples in today's reading. They are leaving their community in Jerusalem. Their friend Jesus has been crucified. Their hope is gone. They are trying to make sense of what has occurred, so that they can put the experience behind them. Jesus himself approached the two men, but they take him for a stranger. Jesus asks them what they are discussing. He invites them to share their experience and interpretation of the events surrounding his crucifixion and death. When the two disciples have done so, Jesus offers his own interpretation of his crucifixion and resurrection, citing Jewish Scripture. In that encounter we find the model for our Liturgy of the Word, what we do each time we gather as a community for the Eucharist. We reflect upon our life experiences and interpret them in light of Scripture. We gather to break open the Word of God.

ROMERO'S

Water Well Service

Electrical Troubleshooting

505-455-7758 505 920 3422
Lic. #360286 Flo Romero



restaurante
Rancho de Chimayo
505.351.4444
OPEN DAILY 9am-6pm
ranchodechimayo.com

Advertise in Our Church Bulletin!

Contact Gabriel Lara
glara@4LPi.com
(800) 950-9952 x5842

Pojoaque Supermarket

9 West Gutierrez St.
Pojoaque Plaza



Angelica Martinez Serrano
Exclusive Agent

License: 7252141

505-753-3133
437 N. Riverside Dr. Ste. B Espanola, NM 87532
Allstate
You're in good hands.
AUTO • HOME • LIFE • RENTERS

Let Go.
Let God.



ST. MICHAEL'S HIGH SCHOOL
Providing Catholic Lasallian education for more than 160 years.
Join the Lasallian Tradition
Your Path to BECOMING A HORSEMAN starts here!
505-983-7353 www.stmichaelsf.org

FREE AD DESIGN
WITH PURCHASE OF
THIS SPACE

Call 800.950.9952



RESTAURANT
el PARASOL
Since 1958
Outdoor Patio Seating
Order Online! www.elparasol.com
(505) 455-7185
30 Cities of Gold Rd., Pojoaque, NM

Flowers by Gillian

Fresh Floral Design
Houseplants Next day delivery available
3801 Arkansas Suite A • Los Alamos
505-663-0012
flowersbygillian.net
flowersbygillian@gmail.com



Serna's Car Washes

Self-service bays with hot water, vacuums, towels, fragrances.
Two locations:
24 Cities of Gold Road in Pojoaque
2 Serna Lane in Jacona
Used tire repair provided on-site by Pat Serna: call for appointment (505) 310-0193



(505) 455-2219
34 Cities of Gold Rd Santa Fe 87506
kokomanfinewines.com

IF YOU LIVE ALONE You Need

MDMedAlert! Ambulance/Police
Family/Friends
GPS & Fall Alert
As Low As **\$19⁹⁵** /mo.
CALL NOW! **800.808.9294**
md-medalert.com

Support Our Advertisers!

Timeless Treasures & Curiosities

Antiques & Gifts
18063 US 285 • Pojoaque, NM
505-660-9509
10% off with this ad



De Vargas
FUNERAL HOME & CREMATORY
625 N. Railroad Ave. ~ Española
877-747-3600 • 747-7477 • www.devargasfuneral.com
Johnny C. DeVargas, Funeral Director

Never miss our bulletin!

Get this bulletin delivered straight to your inbox every week.

Scan to subscribe on parishesonline.com



Does your organization need a newsletter?
We'll cover the printing costs!

Learn more at lpicommunities.com



ADT-Monitored Home Security

Get 24-Hour Protection From a Name You Can Trust

- Burglary
- Fire Safety
- Flood Detection
- Carbon Monoxide

ADT Authorized Provider | SafeStreets

833-287-3502



For ad info. call 1-800-950-9952 • www.4lpi.com

Nuestra Senora de Guadalupe, Santa Fe, NM

05-0120