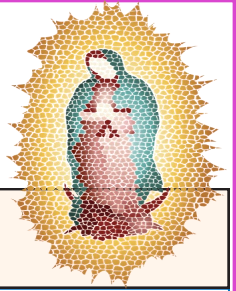


***NUESTRA SEÑORA DE GUADALUPE
DEL VALLE DE POJOAQUE***
9 Grazing Elk Drive, Santa Fe, NM 87506
June 14, 2026



Parish Administrator: Rev. Franklin D. Pretto
Pastor Emeritus: Msgr. Jerome Martinez y Alire

Parish Office Phone, Webpage & Hours: (505) 455-2472; www.facebook.com/nsdg.church
Open Monday, Wednesday and Thursday 10am–12 noon and 1:30pm–4:30pm
Office is Closed on Tuesday and Friday– Please leave a message and the call will be returned next business day.
Rev. Franklin D. Pretto is out of the Office on Monday and Tuesday Morning
Monsignor Jerome is available to meet by appointment ONLY.



CONFESSIONS:	Saturdays:	2:00p.m. Pojoaque-Nuestra Senora de Guadalupe
MASSES:	Saturdays:	4:00p.m. El Rancho-San Antonio de Padua-Spanish Mass
		5:00p.m. Spanish Video Mass-Nuestra Senora de Guadalupe
		5:30p.m. Nambe Pueblo-Saint Francis of Assisi-English Mass
	Sundays:	8:30a.m. Nambe-Sagrado Corazon de Jesus-English Mass
		9:00a.m. English Video Mass-Nuestra Senora de Guadalupe
		10:30a.m. Pojoaque-Nuestra Senora de Guadalupe-English Mass
	Weekdays:	11:30a.m. Pojoaque-NSDG Tue., Wed., and Thu. English Mass



**MASS INTENTIONS
THIS COMING WEEK
AND WEEKEND
June 16 – June 21**

Tuesday, June 16, 11:30a.m. Pojoaque

- † Alfred Trujillo (BD), Martin Trujillo & Allen Grace by Loyola & Patricia Trujillo
- † Oliver Rivera (BD); Pablo & Toni Romero by Annabelle Rivera
- * The Welfare of the Country & Peace in the World by David & Celina Ortiz
- † Dirk Keefe by Shiela Keefe

Wed., June 17, 11:30a.m. Pojoaque

- † Phil & Esther Martinez by The Family
- † Maria Elena “Nena” Romero by Vince Nasca
- † Paula Roybal Sanchez by Gary Sanchez
- † Genaro Quintana Jr. (52 Yr.A), Genaro Quintana Sr. & Josefina Quintana by Jovanna Ortiz & Quintana Fam.

Thursday June 18, 11:30a.m. Pojoaque

- † Joe D. Gonzales by The Family
- † Eloy & Aurelia Salazar & Ermelinda Martinez by Florence Medina
- † Ignacio “Nacho” Medina by Florence Medina

Saturday, June 20, 4:00p.m. El Rancho-Span. Mass

- † Deacon Danny Valdez by Norma Valdez & Family
- † Oliver Rivera by Annabelle Rivera
- * Health of Margarita Trujillo by The Parish Staff
- † Maria Berlene Ortiz (BD), Pita Ortiz & Sef Ortiz by David & Celina Ortiz

5:00p.m. Pojoaque-Spanish Video Mass

- † David & Hilda Pretto by The Family
- † Gregorio & Nelda Martinez; Bernadette Apodaca
- *†Lena Baca & All Living & Deceased Family Members by The Family

5:30p.m. Nambe Pueblo-English Mass

- † Bernie Perez Sr. & Joe Muller by Pat & Diane Muller & Family
- *†Living & Deceased Members of the Holy Family
- † Carlos Griego by The Family

Sunday, June 21, 8:30a.m.-Nambe-English

- † Pablo & Procopio Roybal; Alberto Salazar by The Sanchez Family
- † Nestor, Ernesto (BD) & Ben Lujan (BD) by The Chavez Family
- † Flaviano Herrera, Ubaldo Maestas & Juan B. Lucero by Gabriel & Berlina Herrera

9:00a.m.-Pojoaque-English Video Mass

- † Francisco A., Francisco E. & Priscilla Vieira by Casilda M. Vieira
- † Lois Pasture, Charles McJilton & Marla Miniskin by Joanne Frey
- † Scott, Dee & Vickie Sealy by Pat Sealy
- * Health of Shala Brady, Larry Munch & Billy Horvat by Joanne Frey

10:30a.m. Pojoaque-English Mass

- † Arturo F. Romero, Rubel Romero & Gregorio Lopez by Barbara Romero & Family
- † Eloy, Vicente & Gilbert Velarde by The Family
- † Mary Lou Lujan by Rosendo Lujan
- † Pablo Romero; Robert & George Yardman by Deacon Donald & Elaine Yardman

ABUSE AWARENESS TRAINING FOR ADULTS:

Attention all members of various organizations that serve in the church. If you are 18 and older you are required to take the online course *Abuse Awareness Training: Creating a Safe Environment Workshop*, sponsored by the Archdiocese of Santa Fe. Visit archdiosf.org; first click “Links”, then click VIRTUS Child Protect Training. At the end of the Training download a Certificate of completion and send it to the Parish Office. Classes are good for five years. If you are not sure if you are up to date, call the Parish Office at (505) 455-2472 to check your status.

FOR MARRIAGE WEEKEND PREPARATIONS

Please visit www.familylifem.org to register or Retreats Please contact the Hispanic Ministry Office (505) 831-8117

PRE-CANA CLASSES

Saint Anne Parish in Santa Fe (505) 690-7451 For questions, please contact the Family Life Office at (505) 831-8117 or email at [yduran@asfmm.org](mailto:yduram@asfmm.org)

BAPTISM CLASSES: San Isidro Catholic Church in Santa Fe at the Parish Center; English Classes 3rd Thursday of the month 6:00p.m.; Spanish Classes last Tuesday of the month 6:00p.m. Please call 505-471-0710 to register.

SAN JUAN DIEGO CHAPEL The Chapel is open daily, 6:00a.m. to 12:00p.m., for ALL who would like to sit in prayer throughout the day. First Friday 8:00a.m. to 12:00p.m. Daily Adoration 9:00a.m. to 10:00a.m.

ANNUAL CATHOLIC APPEAL 2026 “FEARLESS IN FAITH, BOUNDLESS IN LOVE” Goal for Parish is \$25,000, which is \$500 LESS than last year. Total Currently Paid \$9,894. We are committed to sharing our financial gifts with others. Thank you to all who contribute.

CONTACT INFO TO SCHEDULE RETREATS

Facilitator Sr. Paula Gallagher, IHM, (505) 670-0240 or email musicwrit@aol.com

MASSES AT NAMBE PUEBLO OR OTHER MASSES:

If the Pueblo closes on a weekend, Mass Intentions will be moved to the next weekend. **Eucharistic Services:** Mass Intentions for Weekday Masses will be moved to the next day & Weekend Masses will be moved to the next Weekend.

TO VIEW OUR PARISH BULLETIN

Follow This Link: www.parishesonline.com

REFLECTION: ELEVENTH SUNDAY OF ORDINARY

TIME: The Eleventh Sunday in Ordinary Time focuses on God’s call and compassion, commissioning believers as missionary disciples to share the Gospel and heal in his name. The readings highlight God’s initiative in forming a covenant, while the Gospel highlights Jesus’ desire to nourish and send out his people, recognizing them as laborers for the Kingdom. Jesus looks upon the crowd with compassion, seeing them as “sheep without a shepherd”. He commands us to be “laborers” in a broken world to cure the sick, raise the dead. And cleanse the leper, giving without cost what has been received. Like the parable of the seeds (often associated with these readings), our actions and ministry may seem small, but they carry potential for immense growth through God’s grace. We are called to act as “fields hospitals” in our daily lives, bringing God’s compassion, love, and mercy to those experiencing poverty, sickness, or loneliness. How can I better recognize the “scars” of others in my life and be a vessel of God’s healing and love?

DAILY READINGS FOR: June 14 – June 20**Sunday:** 91:EX 19:2-6a PS100:1-5 ROM5:6-11 MT9:36-10:8**Monday:** 365 1 KGS 21:1-16 PS 5:2-7 MT 5:38-42**Tuesday:** 366: 1 KGS 21:17-29 PS 51:3-16 MT 5:43-48**Wednesday:** 367: 2 KGS 2:1-14 PS 31:20-24 MT 6:1-18**Thursday:** 368: SIR 48:1-14 PS 97:1-7 MT 6:7-15**Friday:** 369: KGS 11:1-20 PS 132:11-18 MT 6:19-23**Saturday:** 370: 2 CHR 24:17-25 PS 89:4-34 MT 6:24-34**FAMILY CONNECTION**

Every person in the Church is sent by Christ to do the work that he did. This task can seem daunting. Yet when we have learned to work together with others to achieve a common goal, we have learned something of what it means to do the work of Christ. The family is one such place in which we work with others, sharing a common task and a common goal. As family members gather, invite each person to reflect upon their contributions to family life. Invite each one to share one or two things that they do to help keep your family life flowing smoothly. Take time to thank one another for the contributions each person makes to our family life. Point out that the disciples are called to work together just as family members must work together. Pray together that your family will always work together as a family and help one another.

ENVELOPE USAGE

By using your Church Offering Envelope **OR** a plain Envelope with your envelope number, you are indicating your presence at Mass. What you put in the envelope is between you and God. Parishioners are asked to include full name, envelope number, and address. **Thank you for your support.**

JORNADA DE FE meets Saturdays from 9:00a.m.-3:00p.m. St. John the Baptist Church in Santa Fe everyone is welcome.

RESTROOMS: All children must be accompanied by parents when going to the restroom. Also, adults should also use the buddy system when going to the restroom. It is very important and for your protection that everyone follow this guideline.

ANOINTING OF THE SICK every third weekend of the Month. In Nambe Pueblo, Nambe & Pojoaque; after the celebration of the Mass. In El Rancho; before the Mass.



WHAT YOU WEAR AT MASS MATTERS: Our clothing should not be a needless distraction for our brothers and sisters at Mass. Avoid shorts, low cut tops, spaghetti straps, etc. Bottom line, we can wear our best without being a distraction.

BLESSED SACRAMENT ADORATION July 3rd

Please come and spend one hour with Jesus! My sweetest Joy is to be in the presence of Jesus in the Holy Sacrament. I beg that when obliged to withdraw in body, I may leave my heart before the Holy Sacrament. How I would miss out Lord, if He were to be away from me by His Presence in the Sacrament!

**COLLECTION FOR THE WEEKEND OF
May 30, and May 31**

Sunday Envelope	\$5,266.26
Building Fund	\$ 250.00
St. Vincent de Paul	\$ 110.00
Children's Collection	\$ 4.00
Other ASF Collections	\$ 100.00

***Please Note:** These totals may be adjusted as they are deposited, these adjustments occur at the bank and include insufficient funds, etc. Final collection amounts are totaled on a yearly Contribution Report and are available to parishioners at the end of each year.

Thank you for your continued generosity. May God Bless You!

Instead of ON LINE GIVING, you can set up **BILL PAY** through your Bank or Credit Union to have a donation sent weekly, monthly, or annually to support our Parish.

PARISH BIBLE STUDY CLASSES HAVE BEGUN

Classes are held in Classroom 2 every Tuesday morning at 9:00a.m. and evening classes at 6:00p.m. We will be studying Paul's Letters. Bring your Bible and a friend.

(Deacon Donald)

SUNDAY GOSPEL REFLECTION

First Reading: Exodus 19:2-6a God tells Moses that the Israelites will be his special people

Responsorial Psalm: 100:1-3,5 We are the people of God.

Second Reading: Romans 5:6-11 Christ died for us while we were still sinners and reconciled us to God.

Gospel Reading: Matthew 9:36-10:8 Jesus sends the twelve apostles to proclaim the kingdom of heaven.

In today's Gospel, Jesus shares his mission to proclaim the kingdom of heaven with his disciples. The signs of the kingdom's presence consist of the work that Jesus has already been doing, the sick are cured, lepers are cleansed, demons are driven out, and the dead are raised to life. The disciples are sent to continue doing the work that Jesus has begun. This is a moment of transition in Matthew's Gospel. The focus has shifted from the ministry of Jesus to the work of the community that he has inaugurated. More than any other Gospel, Matthew's Gospel elaborates on the work of the Church, which is to continue after Jesus' death and resurrection. The Gospel reports that Jesus commissions twelve disciples. Many scholars believe that the twelve disciples symbolize the twelve tribes of Israel. It designated, therefore, continuity between Israel and the Church. Matthew lists the names of the twelve disciples, as do Mark and Luke. Matthew also used the word apostle when referring to the Twelve. The word apostle means "one who is sent." In this context, Matthew is calling attention to the mission that the twelve disciples are being given. They are sent by Jesus to proclaim the kingdom of heaven in word and deed. As Jesus sent his disciples to continue his work and mission, so too the Church is sent by Jesus. The Church is his continuing presence on earth. Every member of the Church is sent by Jesus to contribute to this mission. Today's readings are about God's invitation to us to be disciples. We can conclude by saying that as disciples we can pray and fast, which we are certainly called to do. Humble yourself this day and always. Do not become judgmental or indignant at the sin of others. Finally, rejoice as you see God lavish His mercy on you.

ROMERO'S

Water Well Service

Electrical Troubleshooting

505-455-7758 505 920 3422

Lic. #360286

Flo Romero



restaurante
Rancho de Chimayo

505.351.4444
OPEN DAILY 9am-6pm
ranchodechimayo.com

Advertise in Our Church Bulletin!

Contact Gabriel Lara

glara@4Lpi.com
(800) 950-9952 x5842

Pojoaque Supermarket

9 West Gutierrez St.
Pojoaque Plaza

Let Go.
Let God.



ST. MICHAEL'S HIGH SCHOOL

Providing Catholic Lasallian education for more than 160 years.

Join the Lasallian Tradition
Your Path to BECOMING A HORSEMAN starts here!

505-983-7353 www.stmichaelsf.org

FREE AD DESIGN
WITH PURCHASE OF
THIS SPACE

Call 800.950.9952



RESTAURANT
Outdoor Patio Seating
Order Online! www.elparasol.com
(505) 455-7185
30 Cities of Gold Rd., Pojoaque, NM

Flowers by Gillian

Fresh Floral Design
Houseplants Next day delivery available
3801 Arkansas Suite A • Los Alamos
505-663-0012
flowersbygillian.net
flowersbygillian@gmail.com



Serna's Car Washes

Self-service bays with hot water, vacuums, towels, fragrances.
Two locations:
24 Cities of Gold Road in Pojoaque
2 Serna Lane in Jacona
Used tire repair provided on-site by Pat Serna: call for appointment (505) 310-0193



IPI

We're Hiring Ad Sales Executives

- Paid Training
- Full-time with Benefits

Visit www.ipicomunities.com/careers

IF YOU LIVE ALONE You Need

MDMedAlert! ✓ Ambulance/Police
✓ Family/Friends
✓ GPS & Fall Alert

As Low As **\$19⁹⁵** /mo.

CALL NOW! 800.808.9294
* md-medalert.com

"I have peace of mind... Mom remains independent"

Support Our Advertisers!

Timeless Treasures & Curiosities

Antiques & Gifts

18063 US 285 • Pojoaque, NM
505-660-9509

10% off with this ad

De Vargas

FUNERAL HOME & CREMATORY

625 N. Railroad Ave. ~ Española
877-747-3600 • 747-7477 • www.devargasfuneral.com
Johnny C. De Vargas, Funeral Director

Never miss our bulletin!

Get this bulletin delivered straight to your inbox every week.

Scan to subscribe on parishesonline.com



Does your organization need a newsletter?
We'll cover the printing costs!

Learn more at ipicomunities.com



ADT-Monitored Home Security

Get 24-Hour Protection From a Name You Can Trust

- Burglary
- Flood Detection
- Fire Safety
- Carbon Monoxide



Authorized Provider

SafeStreets

833-287-3502



For ad info. call 1-800-950-9952 • www.4lpi.com

Nuestra Senora de Guadalupe, Santa Fe, NM

05-0120