

St. Joseph

Catholic Church

1011 BOSTON STREET • WACO, TEXAS 76705 • 254-799-2531

PASTOR: Fr. Boniface Onjefu

PARISH OFFICE / RECTORY

Office Hours 9:00 a.m.–1:00 p.m.

Email stjosephwaco@aol.com

Parish Secretary.....Michelle Wall

Facebook @ St. Joseph Catholic

Church and on the web @

www.stjosephwaco.com

ADORATION: Friday's from 8:30-1:30

YOUTH EDUCATION (C.C.E.)

Veronica Mendias..... 799-6646

CELEBRATION OF THE EUCHARIST

Saturday Evening Vigil 5:00 p.m.

Sunday :9:30 a.m., Español 11:30 p.m.

Weekdays: Tues. & Thurs. ...5:30 p.m.

Wed. & Fri.....12:15 p.m.

CONFESSION : CONFESION

Saturday 3:30-4:30 p.m. or by

appointment. El Sábado de

3:30-4:30 p.m.

BAPTISM CLASSES; CLASE DE

BAUTISMO, 3rd Sunday each month, El

tercer Domingo cada mes @ 2PM

English, 3:30 PM Spanish.

BAPTISM, MARRIAGE: BAUTISMO ,

MATRIMONIO: Please meet with the

Pastor six months prior to your

tentative wedding date. Bodas: Por

favor de hablar con el Sacerdote seis

meses antes la boda.

PASTORAL COUNCIL MEMBERS:

Bobby Devorsky, Tomasa Guerrero,

Ralph Blanco, Shane Loftin

DECEMBER 20, 2020

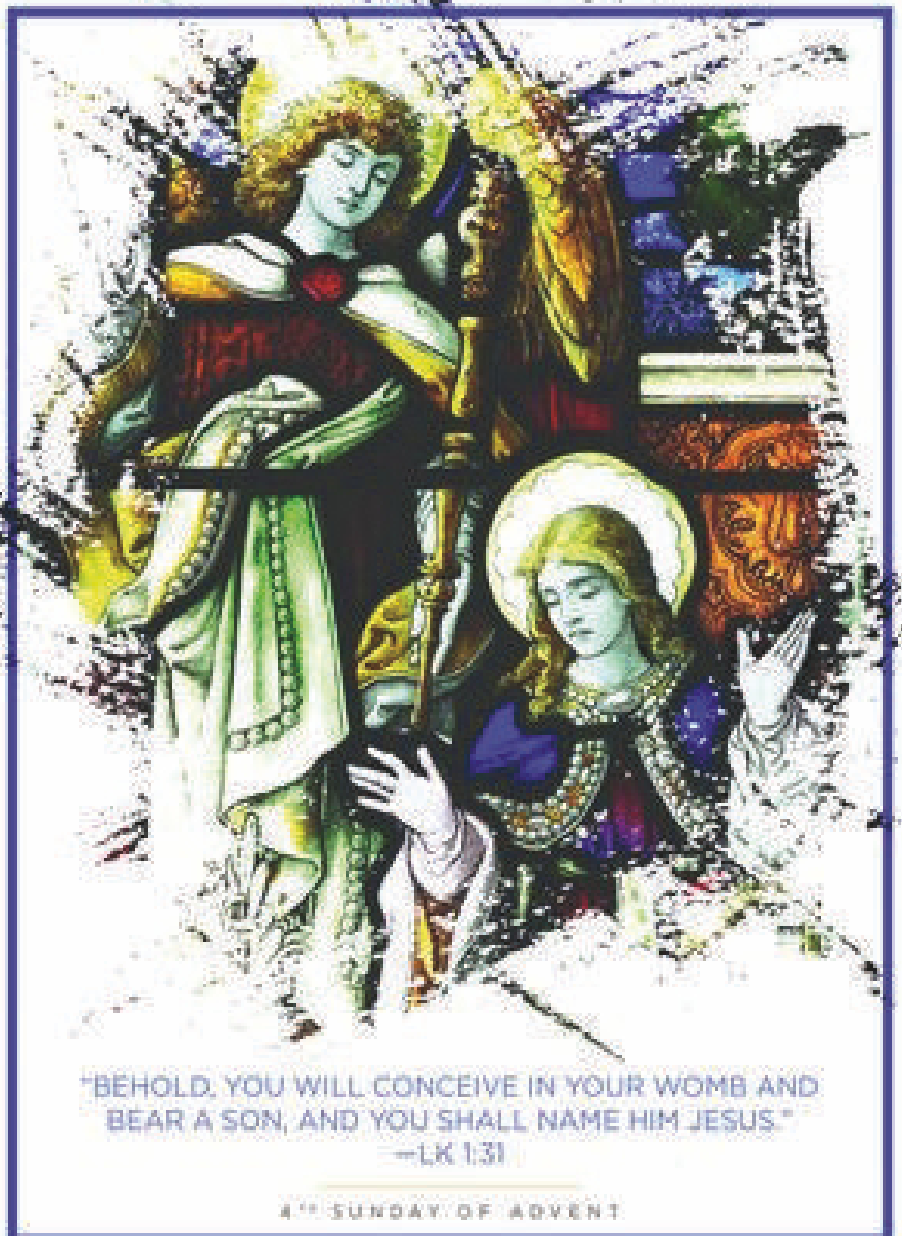


ILLUSTRATION BY THE LITURGICAL ARTS CENTER, 1998. WWW.LITURGICALARTS.COM



ST. JOSEPH CATHOLIC CHURCH IS A PARISH OF THE DIOCESE OF AUSTIN



DAY	DATE	TIME	INTENTION
MONDAY	DEC 21	NO MASS	NO MASS
TUESDAY	DEC 22	5:30 PM	Eddie Beltran
WEDNESDAY	DEC 23	12:15 PM	Pat Farek
THURSDAY	DEC 24	4:00 PM	Sissie Loftin+
THURSDAY	DEC 24	8:00 PM	Johnny Glatter+
FRIDAY	DEC 25	9:30 AM	Domesle Family Living & Deceased
FRIDAY	DEC 25	11:30 AM	Parishioners
SATURDAY	DEC 26	5:00 PM	Melvin Buxkemper+
SUNDAY	DEC 27	9:30 AM	Maria Lozano+
SUNDAY	DEC 27	11:30 AM	Parishioners



Altar Server & Lector/ Monaguillos y Lectores

Sat. DEC 26 5:00 P.M.

Robert Dunlap
Melinda Blanco

Sun. DEC 27 9:30 A.M.

Joey Davis
Diane Buxkemper

Sun. DEC 27 11:30 A.M.

Karol Centeno, Adriel Sotelo
Esteban Perez, Leticia Perez

Fr. Boni is looking for a few people to add to our financial and pastoral councils. If you have never served on the council before and have financial experience or if you are interested in serving on our pastoral council. Please call the office and leave your information.

Estamos buscando a unas pocas personas que se unan a nuestros consejos de pastoreo y financieros. Si tienen experiencia financiera o quieren servir en nuestro consejo pastoral, por favor llamen a la oficina para que deje su información.

Our CCE director is looking for a few people to help with our virtual classes. You MUST be EIM compliant. If you are interested, please call the CCE office @ 254-799-6646 for more info.

Nuestro coordinador de CCE está buscando algunas personas para ayudar con las clases virtuales. DEBE cumplir con EIM. Si está interesado, llame a la oficina de CCE para más información @ 254-799-6646

SPIRITUAL COMMUNION PRAYER

My Jesus, I believe that You are truly present in the Most Holy Sacrament. I love You above all things, and I desire to receive You into my soul. Since I cannot at this moment receive You sacramentally, come at least spiritually into my heart. I embrace You as if You were already there and unite myself wholly to You. Never permit me to be separated from You. Amen
Creo Jesus mío, que estas real y verdaderamente en el cielo y en el Santísimo Sacramento del Altar. Te amo sobre todas las cosas y deseo vivamente recibirte dentro de mi alma, pero no pudiendo hacerlo ahora sacramentalmente, ven al menos espiritualmente a mi corazón. Amén

You may get your weekly/ monthly offering to the parish in many different ways. 1) Mail into the parish 2) Drop it by the church office 3) Online giving is available through the Austin Diocese.

Usted puede hacer su ofrenda a la parroquia de varias maneras: 1) Por correo a la iglesia. 2) traerlo a la oficina de la iglesia 3) electrónico mediante la página de internet de la Diócesis de Austin.



CHRISTMAS MASS SCHEDULE

Dec 24– 4pm English; 8pm Bilingual

Dec 25– 9:30 am English;
11:30 am Spanish

Las Posadas, a Spanish tradition of 9 days (Novena type) will start on Wednesday, December 16 thru Wednesday, December 23@ 7pm. Each night a family hosts the posada at the hall. Food is provided by different families throughout these days. We will only celebrate 8 days. Please join us. It is in Spanish.

Nos faltan dos posadas: el miercoles, 16 de diciembre y martes, 22 de diciembre.

Contribution Envelopes for 2021 are on the table in the foyer. You may have received a new number this year. If you do not receive envelopes and would like some please call the office.

Los Sobres para las contribuciones estaran en la mesa en el vestibulo. Si no tienes y quieres uno, favor de llamar a la oficina.

2021 Calendars will be put out for Christmas.

Please take one per family until we see how many we have left over and you may be able to take a second one. If you visit one of our parishioners who are unable to attend mass, please feel free to take one to them.



Please remember to wear a mask in mass for the protection of others. Por favor usar una máscara a la misa por el bien de todos.

REMEMBER IN PRAYER/ OREMOS

Joe & Margie Aimer, Diane Anderson, Bill Bechtell, Joe Brezina, Olga Calvazos, Brenda Fetsch, Jose Guerrero, Juana Guerrero, Rosenda Guerrero, Brian Harlan, Sally Macha, Leon Marek, Rosemary Mynarcik, Ella Mae Niekamp, Ryan Niekamp, Janie Portillo, Arthur Rivas, Jimmy & Dolores Robert, Randy Robertson, Brenda Rocha, Norma Saldivar, David Sealey, Gracie Spokup, Mary Stone, Susan Stone, Eileen Streibel, Sharon White

**WEEKLY COLLECTION / COLECCION SEMINAL
DUE TO BULLETIN DEADLINES THIS WILL
APPEAR NEXT WEEK
YTD TOTAL \$121,635.59**

THIS WEEK'S READINGS

Readings for the week of December 20, 2020

Sunday: 2 Sm 7:1-5, 8b-12, 14a, 16/Ps 89:2-3, 4-5, 27, 29 [2a]/Rom 16:25-27/Lk 1:26-38

Monday: Sg 2:8-14 or Zep 3:14-18a/Ps 33:2-3, 11-12, 20-21 [1a; 3a]/Lk 1:39-45

Tuesday: 1 Sm 1:24-28/1 Sm 2:1, 4-5, 6-7, 8abcd/Lk 1:46-56

Wednesday: Mal 3:1-4, 23-24/Ps 25:4-5ab, 8-9, 10 and 14 [cf. Lk 21:28]/Lk 1:57-66

Thursday: *Morning:* 2 Sm 7:1-5, 8b-12, 14a, 16/Ps 89:2-3, 4-5, 27 and 29 [2]/Lk 1:67-79

Friday: *Vigil:* Is 62:1-5/Ps 89:4-5, 16-17, 27, 29 [2a]/Acts 13:16-17, 22-25/Mt 1:1-25 or 1:18-25.

Night: Is 9:1-6/Ps 96:1-2, 2-3, 11-12, 13 [Lk 2:11]/Ti 2:11-14/Lk 2:1-14. *Dawn:* Is 62:11-12/Ps 97:1, 6, 11-12/Ti 3:4-7/Lk 2:15-20. *Day:* Is 52:7-10/Ps 98:1, 2-3, 3-4, 5-6 [3c]/Heb 1:1-6/Jn 1:1-18 or Jn 1:1-5, 9-14

Saturday: Acts 6:8-10; 7:54-59/Ps 31:3cd, 6 and 8ab, 16bc and 17 [6]/Mt 10:17-22

Next Sunday: Sir 3:2-6, 12-14 or Gn 15:1-6; 21:1-3/Ps 128:1-2, 3, 4-5 [cf. 1] or Ps 105:1-2, 3-4, 5-6, 8-9 [7a, 8a]/Col 3:12-21 or 3:12-17 or Heb 11:8, 11-12, 17-19/Lk 2:22-40 or 2:22, 39-40

Las lecturas de la semana del 20 de diciembre de 2020

Domingo: 2 Sm 7, 1-5. 8-12. 14. 16/Sal 89, 2-3. 4-5. 27. 29 [2]/Rom 16, 25-27/Lc 1, 26-38

Lunes: Cant 2, 8-14 o Sof 3, 14-18/Sal 33, 2-3. 11-12. 20-21 [1; 3]/Lc 1, 39-45

Martes: 1 Sm 1, 24-28/1 Sm 2, 1. 4-5. 6-7. 8/Lc 1, 46-56+

Miércoles: Mal 3, 1-4. 23-24/Sal 25, 4-5. 8-9. 10 y 14 [cfr. Lc 21, 28]/Lc 1, 57-66

Jueves: *Mañana:* 2 Sm 7, 1-5. 8-12. 14. 16/Sal 89, 2-3. 4-5. 27 y 29 [2]/Lc 1, 67-79

Viernes: *Vigilia:* Is 62, 1-5/Sal 89, 4-5. 16-17. 27. 29 [2]/Hch 13, 16-17. 22-25/Mt 1, 1-25 o 1, 18-25. *Noche:* Is 9, 1-6/Sal 96, 1-2. 2-3. 11-12. 13 [Lc 2, 11]/Tit 2, 11-14/Lc 2, 1-14. *Matutina:* Is 62, 11-12/Sal 97, 1, 6. 11-12/Tit 3, 4-7/Lc 2, 15-20. *Día:* Is 52, 7-10/Sal 98, 1. 2-3. 3-4. 5-6 [3]/Heb 1, 1-6/Jn 1, 1-18 o Jn 1, 1-5. 9-14

Sábado: Hch 6, 8-10; 7, 54-59/Sal 31, 3-4. 6 y 8. 16 y 17 [6]/Mt 10, 17-22

Domingo siguiente: Ecl 3, 2-6. 12-14 o Gn 15, 1-6; 21, 1-3/Sal 128, 1-2. 3. 4-5 [cfr. 1] o Sal 105, 1-2. 3-4. 5-6. 6-9 [7. 8]/Col 3, 12-21 o 3, 12-17 o Heb 11, 8. 11-12. 17-19/Lc 2, 22-40 o 2, 22. 39-40

Food items in green barrel MUST be NON PERISHABLE . Los artículos alimenticios en barril verde no deben ser perfectos.



NEVER MISS A BULLETIN !

Sign up to have our weekly parish bulletin emailed to you at www.parishesonline.com



WE'RE HIRING AD SALES EXECUTIVES



- Full Time Position with Benefits
 - Sales Experience Preferred
 - Paid Training
 - Overnight Travel Required
 - Expense Reimbursement
- CONTACT US AT: careers@4LPi.com
www.4LPi.com/careers

catholicmatch[®]
Texas



CatholicMatch.com/TX



SINCE 1948
**PARSONS
ROOFING**

Commercial | Government | Industrial | Schools

FREE EVALUATIONS & ESTIMATES

1-877-881-1733

www.parsonsroofing.com

GENEVA HALL

I-35 S. Elm Mott, TX

BINGO - Friday 7 p.m.

Available for Quinceañeras, Wedding Receptions, Ect.

Available for Parties & Weddings

For Information call: **254-715-5695 or 254-315-8818**

Permit #3000054855



TRINITY AUTO HAUS



3841 Franklin Ave.
Waco, Texas 76710

(254) 300-4557

† Fax (254) 300-4553

**AVAILABLE
FOR A LIMITED TIME**

ADVERTISE YOUR
BUSINESS HERE

Contact **Steve Brookshire** to place
an ad today! sbrookshire@4LPi.com
or **(414) 350-7879**



**BELLMead
FUNERAL HOME**

JAMES F. HURST, JR.

President • General Manager

(254) 799-5701

FAX (254) 799-1446

809 Laclede, P.O. Box 154116

Bellmead, Texas 76715-0116

MONEY ELECTRIC COMPANY

Residential ~ Commercial

357 Kelinske Rd.
Elm Mott, TX 76640

(254) 749-5093

Douglas P. Money TECL# 20845

ADT-Monitored Home Security

Get 24-Hour Protection
From a Name You Can Trust

- Burglary
- Fire Safety
- Flood Detection
- Carbon Monoxide



SafeStreets

1-855-225-4251

Too Sick for Mass?

SUPPORT OUR PARISH NO MATTER WHERE YOU ARE!

Sign-up to get your bulletin delivered
right to your inbox!

www.parishesonline.com



**SYKORA
Ford
FAMILY**

"Our family makes the difference"

826-FORD • West, TX

PROTECTING SENIORS NATIONWIDE
MEDICAL ALERT SYSTEM

\$29.95/MO

BILLED QUARTERLY

PLUS
SPECIAL
OFFER



CALL NOW! 1.877.801.7772
WWW.24-7MEDALARM.COM



For ad info. call 1-800-950-9952 • www.4lp.com

St. Joseph Church, Waco, TX

A 4C 05-0499