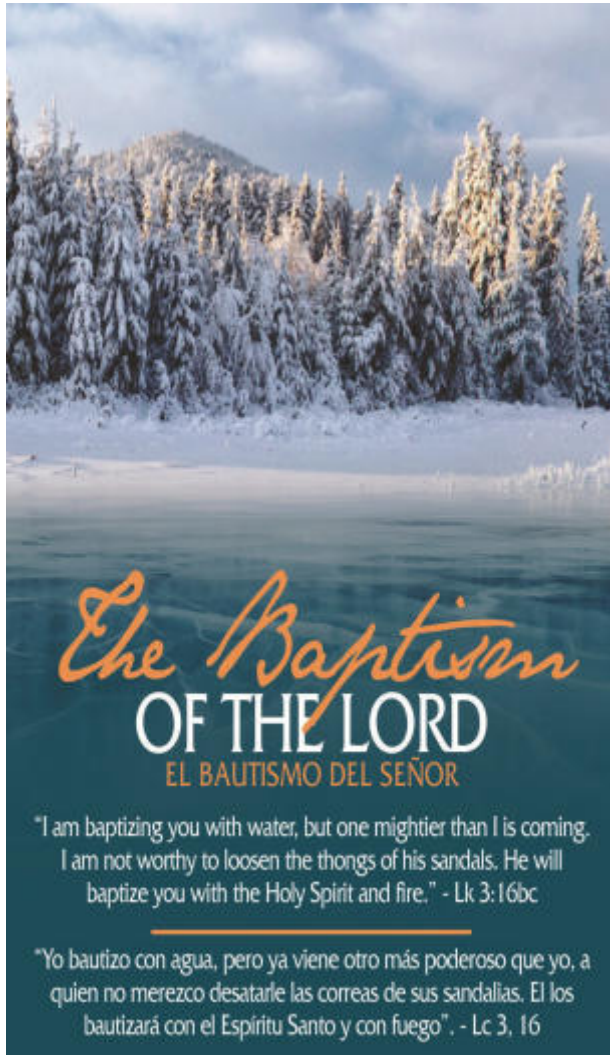


# St. Margaret Mary Alacoque Roman Catholic Church

† Diocese of Tucson †

## Iglesia Católica Romana Santa Margarita María Alacoque



801 N. Grande Avenue - Tucson, AZ 85745  
Parish Office (520) 622-0168 - Fax (520) 882-8022  
Email: parishstmargaret@gmail.com  
[www.stmargaretmarytucson.org](http://www.stmargaretmarytucson.org)

**Business Hours:** 8am-4pm (M - W) 8am-1pm (Thursday)  
closed for lunch 12:00pm - 1:00pm  
Office Closed on Friday, Saturday & Sunday



### BISHOP OF TUCSON

Most Reverend  
Edward J. Weisenburger

### ADMINISTRATOR

Rev. Richard Awange, C.S.Sp.

### SACRAMENTAL

Rev. Robert Kose, OFM Cap

### PARISH DEACONS

Deacon Miguel Lopez  
Deacon Fred Valdenegro

### RELIGIOUS

Sr. Fatima Bonilla

### RECEPTIONIST

Connie De La Ossa

### MASSES / MISAS

#### Daily/Diarla

Mon., Wed. & Fri. 6:30am (English)  
Mon. thru Friday 8:30am (English)  
Martes y Jueves 6:30am (Español)  
Saturday 8:30am & 5:30pm (Vigil)

#### Sunday/Domingo

8:30am & 12:30pm (Español)  
7:00am & 10:30am (English)

#### Holy Days/Días de Obligación

6:30am (Spanish) &  
8:30am (English) &  
6:30pm (Bilingual)

#### Confessions/Confesiones

Saturday/Sábado 4pm-5:10pm

#### Baptisms/Bautismos

Call within one month in advance  
Llamar con un mes de anticipación

#### Quinceañeras

Call within one year in advance  
Llamar con año de anticipación

#### Wedding/Bodas

Call within six months in advance  
Llamar con seis meses de  
anticipación

#### Anointing of The Sick & Holy Communion/ Unclón de los Enfermos y Sagrada Comunión

Call Parish Office as soon as  
possible Llame a la oficina  
Parroquial lo mas pronto posible.

### SACRAMENTS

**Religious Education:** Rosemary Munguia

**Youth Group (Confirmation):** Salvador Roman

**RCIA:** Maria Castro

### MINISTRIES/MINISTERIOS

**EverfPresence:** Beto & Faby Bojorquez

**Catholic Daughters:**

Dorothy Nunnink-Tolar

**Choir:** Jim Weingart

**Extra-Ordinary Eucharistic Minister/**

**Lector/Homebound:** Maria Castro

**Feeding of the Homeless:**

Lupita Dominguez

**Grupo Las Guadalupanas:** Lupita Soto

**Grupo de Matrimonios:**

Fernando & Noelia López

**Hospitality:** Wilma Valdenegro

**Legion of Mary:** Lupita Martinez

**Fuente de Fe:**

Ana Miranda & Maria Hernandez

**Sacred Heart Society:**

Antonia & Ralph Bustamante

**St. Vincent de Paul:** Jessica Santos

**Spiritual Warfare:** Deacon Miguel Lopez

**Altar Servers:** Karla & Dora Alicia

**Cursillo:** Eddie & Olivia Lopez

**Cenáculo de Oración:** Rosario & Dora

January 13, 2019 • The Baptism of the Lord

# Mass Intentions

**Monday/Lunes: January 14, 2019**

*The Names on the Cross of Remembrance*

**6:30am** For the Families of this Parish

**8:30am** †Luis Alonzo Yáñez y  
Almas del Purgatorio  
†Henry Aparicio

**Tuesday/Martes: January 15, 2019**

*Los Nombres en la Cruz de Recuerdo*

**6:30am** Jocelyn Castro (Birthday)

**8:30am** For the Priest of this Dioceses

**Wednesday/Miércoles: January 16, 2019**

*The Names on the Cross of Remembrance*

**6:30am** †Felipe Coss

**8:30am** For the Religious Education Children

**Thursday/Jueves: January 17, 2019**

*Los Nombres en la Cruz de Recuerdo*

**6:30am** For the Youth of this Parish

**8:30am** For all our Laity

**Friday/Viernes: January 18, 2019**

*The Names on the Cross of Remembrance*

**6:30am** For the increase of Religious Vocations

**8:30am** For all the Children

**Saturday/Sabado: January 19, 2019**

*The Names on the Cross of Remembrance*

**8:30am** For the Families of this Parish

**5:30pm** †Dorothy Nunnink  
Chris & Sabrina Garay (Intentions)  
†Mauricio Granillo  
†Miguel Angel Sanchez

**Sunday/Domingo: January 20, 2019**

**7:00am** For the Families of this Parish

**8:30am** En Acción de Gracias a San Charbel

**10:30am** †Lois J. McKewon

†Betty Galvan

†Juaquina Romero

**12:30pm** Pablo Campos-Mendoza (11th Bday)

## This Week's Activities at St. Margaret Mary Alacoque Parish (January 14th thru January 20th)

<b>Mon.:</b> 7pm	Fuente de Fe	Temple
<b>Tues.:</b> 7-8pm 7pm	Cenáculo de Oración Spiritual Warfare	Chapel Rm #3
<b>Wed.:</b> 10:30am-12pm 4:30pm-6:15pm 7-9pm 7pm	Legion of Mary Religious Ed Grupo Matrimonio Choir Practice	Rm #4 Hall & Rm #1-5 Hall & Rm #4 Church
<b>Thurs.:</b> 11am-1pm 7-8:30pm 7-8:30pm 7-9pm	Feeding the Homeless High School Youth Group 2nd Year Teen Confirmation Middle School Religious Ed	Hall Hall Rm #4 Rm #1
<b>Fri.:</b>	<b>Office Closed/Oficina Cerrada</b>	
<b>Sat.:</b> 4:00-5:15pm 9:15am-1pm 7pm	Confessions Religious Ed RCIA	Church Hall & Rm #1-5 Rm #3
<b>Sun.:</b>		

## WEEK OF PRAYER FOR

*Christian Unity*

JANUARY 18-25

### Readings for the Week of January 13

**Sunday:** Is 40:1-5, 9-11/Ps 104:1-4, 24-30/Ti 2:11-14; 3:4-7/  
Lk 3:15-16, 21-22

**Monday:** Heb 1:1-6/Ps 97:1-2, 6-9/Mk 1:14-20

**Tuesday:** Heb 2:5-12/Ps 8:2 and 5-9/Mk 1:21-28

**Wednesday:** Heb 2:14-18/Ps 105:1-9/Mk 1:29-39

**Thursday:** Heb 3:7-14/Ps 95:6-11/Mk 1:40-45

**Friday:** Heb 4:1-5, 11/Ps 78:3-8/Mk 2:1-12

**Saturday:** Heb 4:12-16/Ps 19:8-10, 15/Mk 2:13-17

**Next Sunday:** Is 62:1-5/Ps 96:1-3, 7-10/1 Cor 12:4-11/  
Jn 2:1-11

### Las lecturas de la semana del 13 de Enero

**Domingo:** Is 40,1-5.9-11/Sal 104,1-4.24-30/Tit 2,11-14; 3,4-7/  
Lc3,15-16. 21-22

**Lunes:** Heb 1, 1-6/Sal 97, 1-2. 6-9/Mc 1, 14-20

**Martes:** Heb 2, 5-12/Sal 8, 2 y 5. 6-9/Mc 1, 21-28

**Miércoles:** Heb 2, 14-18/Sal 105, 1-9/Mc 1, 29-39

**Jueves:** Heb 3, 7-14/Sal 95, 6-11/Mc 1, 40-45

**Viernes:** Heb 4, 1-5. 11/Sal 78, 3-8/Mc 2, 1-12

**Sábado:** Heb 4, 12-16/Sal 19, 8-10. 15/Mc 2, 13-17

**Domingo siguiente:** Is 62, 1-5/Sal 96, 1-3. 7-10/  
1 Cor 12, 4-11/Jn 2, 1-11



Diocese of Tucson Parish Annual Financial Report (PAFR)  
 St. Margaret Mary Alacoque Parish  
 Supplementary Information  
 As of June 30, 2018

**FINANCIAL TRENDS:**

Overall, revenue increased 5.1% & expense decreased 2.2%. The Parish received a sizable donation for future classrooms which resides in the PPIT account. Maintenance continues to be an issue for the Parish as the facilities continue to age. Utilities dropped 19.5% due to careful monitoring of the electrical use.

**Statement of Financial Position**  
 as of June 30, 2018

ASSETS:

Cash & Investments - Available for Operations	87,246.52
Cash & Investments - Restricted	0.00
Receivables	0.00
Prepays & Other Assets	1,645.00
Land, Buildings, Equipment & Vehicles	1,214,832.88
<b>Total Assets</b>	<b>1,303,724.40</b>

LIABILITIES:

Payables	10,151.39
Loans	100,581.32
Custodial Funds	0.00
Prepaid Tuition & Other Liabilities	30.17
<b>Total Liabilities</b>	<b>110,762.88</b>
<b>Net Assets</b>	<b>1,192,961.52</b>
<b>Total Liabilities &amp; Net Assets</b>	<b>1,303,724.40</b>

**Statement of Activities**  
 fiscal year ended June 30, 2018

REVENUES:

Offertory & Other Contributions	266,452.16
Capital Campaign Contributions	45,774.00
Grants & Bequests	0.00
School Tuition & Other Fees	0.00
Religious Education & Other Fees	15,719.11
Activity/Fundraising Revenues	33,628.03
Savings & Other Investments	594.63
Other Revenues	12,456.99

**Total Revenues** **374,624.92**

EXPENSES:

Compensation	75,782.72
Benefits	7,258.88
Residency	9,887.09
Office Administration	24,916.17
Transportation	7,718.01
Maintenance Support	84,827.56
Programs & Fundraising	35,399.20
Diocesan Assessments	27,069.00
Professional Fees	10,594.00
Other Expenses	2,774.77

**Total Expenses** **286,207.40**

Net Gain or Loss of  
**Total Revenues less Total Expenses** **88,417.52**

**Supplement Information**

<b>Total Revenue less Total Expenses</b>	<b>\$ 88,417.52</b>
Less Custodial Funds/Fuente de Fe	\$ 237.48
Less Custodial Funds/Homeless	\$ 320.00
Less Custodial Funds/Sacred Heart	\$ 1,756.37
Less Restricted Funds for future classrooms	\$ 35,000.00
Less Restricted Funds for Organ Repair	\$ 4,400.00
Less Restricted Funds for church doors	\$ 2,750.00
Less Restricted Funds for Divine Mercy Chapel	\$ 131.58
Less Restricted Funds for floor stripping & waxing	\$ 550.00
Less Restricted Funds for the hall	\$ 8,540.79
Less Restricted Funds for Hospitality	\$ 150.00
Less Restricted Funds for Music Ministries	\$ 223.00
Less Restricted Funds for Rectory Repair	\$ 1,782.39
Less Restricted Funds for Religious Education	\$ 591.87
Less Restricted Funds for Vacation Bible School	\$ 421.15
Less Restricted Funds for Vestments	\$ 4,800.50
Less Restricted Funds for Youth Group	\$ 258.68
	<b>\$ 61,913.81</b>
<b>Less Principal Payments on Long Term Debt</b>	<b>\$ 17,365.16</b>
<b>Remaining amount available for operations</b>	<b>\$ 9,138.55</b>

**TONY'S  
AUTO GLASS**

417 W. IRVINGTON  
**889-2422**  
3732 N. ORACLE  
**887-5416**



*Family Owned & Operated Since 1960*  
Affordable Funerals & Cremations  
2545 N. Tucson Blvd.  
www.angelvalleyfuneralhome.com  
Se Habla Español  
**520-327-6341**

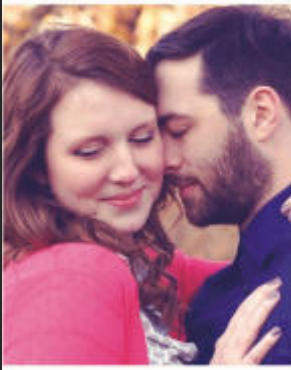
**PATS DRIVE INN**



WORLD FAMOUS  
CHILI DOGS  
AND  
FRENCH FRIES  
1201 W NIAGARA  
TUCSON, AZ 85745

**(502) 624-0891**

catholicmatch  
Arizona



CatholicMatch.com/AZ

**TACO GIRO**  
MEXICAN GRILL & SEAFOOD  
610 N. Grande Ave. • Tucson, AZ  
**(520) 792-2282**  
*10% Discount with this Bulletin*

**AVAILABLE FOR A LIMITED TIME**  
**ADVERTISE YOUR BUSINESS HERE**  
Contact **David Ramirez** to place an ad today!  
dramirez@4LPi.com or **(800) 950-9952 x5829**

**COMFORT CONTROL CORP.**  
AIR CONDITIONING & HEATING  
www.comfortcontrolcorp.net  
853 S. SANTA RITA AVE.  
TUCSON, ARIZONA 85719  
(520) 791-7591

**HELP PROTECT YOUR FAMILY & HOME**  
**CALL NOW! 1-888-891-6806**  
ADT AUTHORIZED DEALER  
HOME SECURITY TEAM

**EL RIO**  
Barber - Stylist  
Julieta Avila Ferrel  
Owner  
• Traditional Style  
Cuts - Flat Top, etc.  
• Color - Perms - Up Dos  
1299 W Speedway Blvd • Tucson, AZ  
**(520) 792-1411** or  
**(520) 250-4999** cell

**DEDICATED DENTAL SERVICE**  
• Graduate of Tucson High and U of A  
• Dentist of well known celebrities  
• Former Board of Directors  
A.T. Still University  
• Grandfather of Eight  
**Manuel C. Bedoya, DMD**  
573-1900 Southwest **FREE** Gold Star Check-Up A Value of \$187.00 750-1500 Eastside



*"Faithfully Serving the Catholic Community"*  
Family Owned & Operated by the  
Carrillo Family Since 1914 **Founder**  
**CARRILLO'S TUCSON MORTUARY INC.**  
TUSCON'S OLDEST  
Call **622-7429** **ARTURO CARRILLO** 1874-1937  
204 South Stone Ave.  
**Leo Carrillo, Owner**



**LPi WE'RE HIRING AD SALES EXECUTIVES**  
Join our team  
• Full Time Position with Benefits  
• Sales Experience Preferred  
• Paid Training  
• Overnight Travel Required  
• Expense Reimbursement  
CONTACT US AT  
careers@4LPi.com • www.4LPi.com/careers

**SPREAD THE WORD**  
A Thriving, Vibrant Community Matters  
**SUPPORT OUR ADVERTISERS**



**LIVING TRUSTS & WILLS**  
*Preserve Your Legacy.*  
Schedule your **FREE** consultation or attend a workshop.  
Ask for Parishioner Discount • Catholic Owned & Operated  
**Call Today 480.346.3571**  
**RJP ESTATE PLANNING**  
A+ Rating