



Saint Catherine Labouré Parish

Parish Website: SCLPGH.ORG
FACEBOOK.COM/SCLPGH

SAINT JOAN OF ARC CHURCH
6414 Montour Street, South Park, PA 15129

MASS SCHEDULE

Tuesday and Thursday: Noon
Saturday: 4:00 pm (Sunday Vigil Mass)
Sunday: 9:00 am & 11:00 am

ADORATION

Thursday: 11:00am-11:45am

CONFESSIONS

Thursday: 11:00 am-11:30 am

SAINT LOUISE DE MARILLAC CHURCH
320 McMurray Road, Pittsburgh, PA 15241

MASS SCHEDULE

Monday-Friday: 7:00 am

Wednesday: 7:00 pm

Monday, Friday and Saturday: 9:00 am

Saturday: 6:00 pm (Sunday Vigil Mass)

Sunday: 8:00 am, 10:00 am, Noon & 4:30 pm

ADORATION

Wednesday: 7:30am-6:45pm

CONFESSIONS

Wednesday: 6:00 pm- 6:45 pm

Saturday: Noon-1:00pm

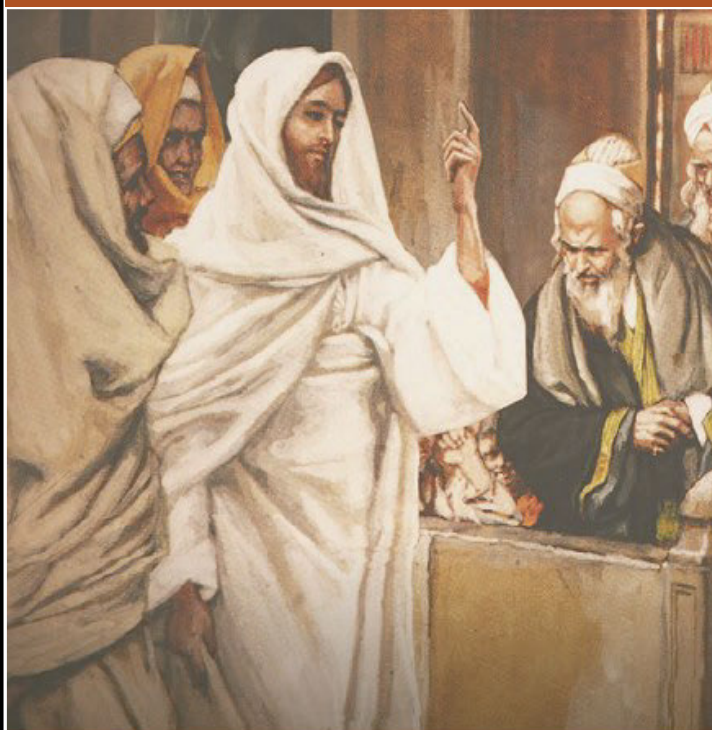
*Saint Louise Church is equipped with a Hearing
Loop: Hearing Aid users switch hearing aid to T-coil*



**SIGN UP FOR WEEKLY UPDATES TO
STAY CONNECTED**
Text SCL2023 to 84576

If you prefer emails and not text messages please go to:
<https://sclpgh.flocknote.com/everyone>

July 7, 2024
14th Sunday in Ordinary Time



14TH SUNDAY IN ORDINARY TIME

When the sabbath came he began to teach in the synagogue, and many who heard him were astonished. They said, "Where did this man get all this? What kind of wisdom has been given him? What mighty deeds are wrought by his hands!" - Mk 6:2

Excerpts from the Lectionary for Mass ©2001, 1998, 1970 CCD

©LPI

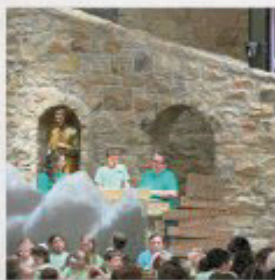
PARISH CLERGY

Reverend Jeffrey Craig, Pastor
Reverend Jon Brzek, Parochial Vicar
Deacon Richard R. Cessar, Permanent Deacon

Parish Office Address:
320 McMurray Road, Pittsburgh, PA 15241
412-833-1010



Misson Week



Vacation Bible School



Corpus Christi



Misson Week



Vacation Bible School



Corpus Christi



Vacation Bible School

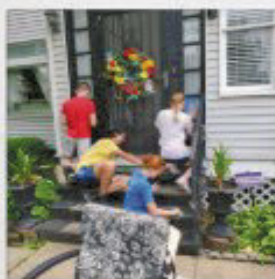


Misson Week



Thank You

to our wonderful volunteers!



Misson Week



Corpus Christi



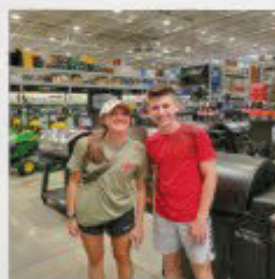
Vacation Bible School



Corpus Christi



Vacation Bible School



Misson Week



Vacation Bible School



Misson Week

MASS SCHEDULE & INTENTIONS

Monday, July 8	
7am (STL)	Frances D. Blazina (Tom & Melanie Conway)
9am (STL)	Robert McNelis (Family) Kathy Zovko (Ron & Carole Cortes)
Tuesday, July 9 Saint Augustine Zhao Rong & Companions	
7am (STL)	Terry Galambus (David & Donna Brown) Dr. Michael Lovell (Saint Louise de Marillac)
Noon (SJA)	Patricia & Ronald Hodges (Joseph, Vincie & George Chilia) Robert Spinneweber (Jason & Heather Gigliotti and Family)
Wednesday, July 10	
7am (STL)	Bill & Vera Lippert (Dan & Janet) Peggy Findle (Bill & Marian Hindman)
7pm (STL)	Terry & JoAnn Teodori (L) 60th Wedding Anniversary
Thursday, July 11 Saint Benedict	
7am (STL)	Nick & Gloria Folino (L) 60th Wedding Anniversary (Children & Grandchildren)
Noon (SJA)	Remembrance Bill & Vera Lippert (Dan & Janet Lippert)
Friday, July 12	
7am (STL)	Marian Testa (Gioella Family)
9am (STL)	Jean Graeser (Nancy Uhler & Family) Fred Rapone (SCL Men's Golf League)
Saturday, July 13 Saint Henry	
9am (STL)	Maeve Kretschmer (L) (Grandpa & Grandma Tittman)
4pm (SJA)	Jean Beyer (Linda DeBon)
6pm (STL)	Bernie Faccenda (Kathy & John Slovan) Antonio Scolieri (Gregory & Michelle)
July 14 Fifteenth Sunday in Ordinary Time	
8am (STL)	Eleanor Mateosky (Alger Family)
9am (SJA)	Theresa Brzek (Fr. Jon)
10am (STL)	Karen Rossetti (Family) Ronald Turnwald (Family)
11am (SJA)	People of Saint Catherine Labouré Parish
Noon (STL)	Mike Zubic (Daneen Calhoun) Jack Murphy (Barb & Rich Murphy)
4:30pm (STL)	Sarah O'Neill-Barone (Family)

Readings for the Week

Monday: Hos 2:16, 17c-18, 21-22; Ps 145; Mt 9:18-26

Tuesday: Hos 8:4-7, 11-13; Ps 115; Mt 9:32-38

Wednesday: Hos 10:1-3, 7-8, 12; Ps 105; Mt 10:1-7

Thursday: Hos 11:1-4, 8e-9; Ps 80; Mt 10:7-15

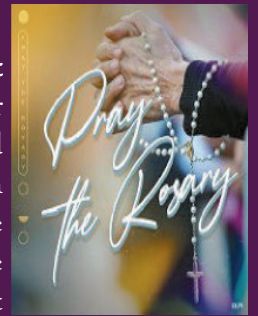
Friday: Hos 14:2-10; Ps 51; Mt 10:16-23

Saturday: Is 6:1-8; Ps 93; Mt 10:24-33

Next Sunday: Am 7:12-15; Ps 85; Eph 1:3-14; Mt 6:7-13

PRAY THE ROSARY

Join us on July 10 at 6:00pm, at Saint Louise Church when our Labouré Ladies Guild will lead us in praying for our parish intentions and for Pope Francis' intention for the month of July: We pray that the Sacrament of the Anointing of the Sick confer to those who receive it and their loved ones the power of the Lord and become ever more a visible sign of compassion and hope for all.



Come to place your personal needs and those of our community and Church before the Lord, through the intercession of the Blessed Mother.

NOCTURNAL ADORATION

Be one with Jesus in Eucharistic Adoration

Come, experience Jesus' physical presence in the late watches of the night, reciting the very Psalms He prayed, "as was his custom." Dare to bring yourself deeper into the mystery of His presence, being led by the writings of our early Church Fathers and caught up in the history of Israel whose events prefigure this Bread of Angels. This is the heart of Nocturnal Adoration and members of this society are called "Nocturnal Adorers."

You are welcome to join our parish adorers beginning at 10:00pm on **Friday, August 2.**



**O MARY, CONCEIVED WITHOUT SIN,
PRAY FOR US WHO HAVE RECOURSE TO THEE!**



SAINT CATHERINE LABOURÉ PARISH MINISTRY OF PRAYER

PLEASE REMEMBER IN YOUR PRAYERS THOSE WHO ARE SICK. Ministers of Prayer are asked to **pray for:** Nemeth Family, Patrick McElhinny, Ann Marie Tupi, Natalie Rabak, Angie Lytle, Joe Elias, Ben Macuga, Mary Cernetic, Jeffrey Chickis, Jane Lookingbill, Mary Visconti, Brett, Wes Nugent, Kajal Mitra, JoAnn H., John Abriola, Elle Croner, G.K., Blake McNally, Hannah and Tom, Joan Lane, Dave K., Judy, Chuck, Edward Geis, Bill Rebholz, Patricia Frazier, Albert Schmalzried, Clara Hegedus, Tom, Barb Schwer, Robert Beyer and Logan Rager.

As people often recover from illness or difficult situations by the aid of prayer, names will stay on the prayer list for a maximum of four weeks, but then can be resubmitted if there is still a need.

Names can be added to this list at any time by notifying Philly Sysak, 412-853-1151.

Prayers continue after names are removed.

Help, save, pity and defend your servants, O God, by your grace.

MARY'S PRAYER GARDEN

Dorothy Price (Nikki Konyk)

Fred Rudolph (Jim & Kathy Zukowski)

Mr. Gonzales (Cerrone Family)

Emrico Bencivenga (Margie & Gary Cerrone)

Joanie McGoogan (Pat Lauth)

SANCTUARY LAMPS

Sanctuary Lamp at Saint Joan of Arc Church
will burn one week for the Saint John the Baptist
in memory of Cathy Furno

Requested by Family

Let Us Gather Together to Pray

Liturgy of the Hours—Morning Prayer

Liturgy of the Hours as the official liturgical prayer of the Church finds its source in the Eucharist to sanctify all hours of our day. The Church invites the laity to join as one in the Body of Christ to pray the Liturgy of the Hours so that God's Word may be integrated into our daily lives in a prayer that is truly both ancient and ever new.

Morning Prayer with group recitation is
held at Saint Louise Church

after the 9:00am Mass on Mondays and

after the 7:00am Mass Tuesdays,

Thursdays and Fridays.

Easy to follow booklets are provided.



2024 Topics at Archabbey and National Oblate Gatherings

On Sunday, July 14 we welcome you to join us as four Oblates present and offer discussion on themes presented at the **June Gathering of Oblate Deanery Representatives at St. Vincent Archabbey** in Latrobe, and the **July Congress of North American Association of Oblate Directors** in Nebraska. This continues our discussion of leadership based on St. Benedict's wisdom in the Rule.

Our meeting will begin with Liturgy of the Hours Daytime Prayer at 1:30pm and end at 3:00pm. Please arrive to be seated before 1:30pm in the Bishop Leonard Room (directly under Saint Louise de Marillac Church).

Hope to have you with us! Questions? Contact Oblate Mary Ann Kaufman 412-302-8501

NEWLY



BAPTIZED

**Maxwell Cruz Christopher, son of
Steven & Emily (Gray) Christopher**

Please pray for this child, his parents and godparents.

ACTIVITIES & EVENTS

Monday, July 8

6:30am Rosary (STL)
7:30am Monday Morning Monicas (STL)
9:30am Morning Prayer (STL)

Tuesday, July 9

6:30am Rosary (STL)
7:30am Morning Prayer (STL)
6:30pm Parish Synod (LeGras 1,2,3)
7pm Catholic Women's Fellowship (LeGras Conf Rm)

Wednesday, July 10

6:30am Rosary (STL)
7:30am Adoration (STL)
10am Mass Readings Explained (LeGras Conf Rm)
3pm Divine Mercy Chaplet & Patriotic Rosary (STL)
6pm Confessions
7pm Worship Committee Meeting (Bp Leonard Rm)

Thursday, July 11

6:30am Rosary (STL)
7:30am Morning Prayer (STL)
7:30am Catholic Men's Fellowship (LeGras Conf Rm)
11am Confessions & Adoration (SJA)

Friday, July 12

6:30am Rosary (STL)
7:30am Morning Prayer (STL)
9am Dignity Robes (LeGras 3)
3pm Divine Mercy Chaplet (STL Church)
4pm Men's Golf (LeGras 2,3)

Saturday, July 13

7:30am Catholic Men's Fellowship (LeGras Conf Rm)
9:30am Senior Breakfast (LeGras 1,2,3)
Noon Confessions (STL Church)

Sunday, July 14

1:30pm Benedictine Oblates Meeting (Bp Leonard Rm)

SAINT CATHERINE LABOURÉ MONTHLY PARISH SUPPORT

Offertory - May Totals

Goal	Offertory	Difference	Expenses
\$188,655.00	\$159,567.17	-\$29,087.83	\$191,007.36
Second Collections			\$13,574.81
Catholic Relief			\$4,507.00

CATHOLIC MEN'S FELLOWSHIP FREE PROGRAMS

Come join us **Saturday mornings** at the LeGras main conference room starting at 7:30 AM and running to 8:50 AM for a free video series on the topic of Exploring the Gospels of Saint John. If you liked The Chosen, this is similar and is a precursor. It **starts July 20th** and will run for 6 weeks. No requirement to make all session and no homework. Just learn, make new friends and enjoy a snack. God Bless! Any questions please contact Mike Fitzpatrick at fitz.michael@comcast.net

The **Thursday morning** Catholic Men's Fellowship will be starting Bishop Barron's 10 part program, "Catholicism," on **July 25th**. As the Word on Fire website states: "Journey around the world and deep into the Faith. In breathtaking, high definition cinematography, the beauty, goodness and truth of the Catholic Faith are illustrated in a rich multimedia experience." The group meets from 7:30-9:00 AM each Thursday in the LeGras main conference room. No registration required, just join us! Any questions please contact Tony Ortenzo at acortenzo@yahoo.com



UPCOMING BAPTISMAL PREPARATION on July 21 at 1:30pm, LeGras Parish Center Conference Room (Saint Louise de Marillac). Baptism Preparation is required for parents who have not previously attended. **Please register by calling 412-833-1010.** To arrange a baptism please contact the Parish Office at least one month prior to intended date. It is suggested that the child be baptized within a month of their birth.

July Schedule:

LABOURE YOUTH

July 10 - Wednesday Mass

Join us for Mass followed by games and snacks!

July 14 - Laboure Youth - Core Team takeover!

Core team is in charge!

July 19-21 Steubenville Youth Conference

Members of Laboure Youth will travel to Steubenville, Ohio for a transformative weekend retreat!

July 24 - Wednesday Mass

Join us for Mass followed by games and snacks!

July 28 - Prayer and Praise night!

Join us for an evening of prayer for our teen in STL church!

All events (besides Steubenville) will be held on the STL campus from 7pm-9pm

Laboure Youth!

Upcoming Events

Mark your calendars for Wednesday night Mass and Games on July 10th from 7-9pm!

Sunday July 14 - Join us for a night planned by the core team!

Laboure Evangelization:

SAVE THE DATE!

Join us on August 1st at 7pm to hear from Sr. Joan Paule, a Franciscan TOR Sister about her life and a Religious Sister and a woman in the Church

Location: LeGras Hall

Contact Kirstin with questions - kessig@sclpgh.org



Faith Formation

2024-25 Faith Formation Registration

Please look for registration links in Parish emails.
Paper forms are available in our churches and offices.
Access our online registration and details about each option of Faith Formation via this QR code.



Faith Formation session options include:

Family Catechesis for families with children in **grades K-5**

Middle School Ministry for children in **grades 6-8**

Catechesis of the Good Shepherd for children **ages 3-8 by Aug. 31.**

Formal Faith Formation begins in the 1st grade for children **not** enrolled in a Catholic school.

We offer **optional** faith formation for Kindergarten and younger children in Family Catechesis and CGS programs.

Questions... email faithformation@scplphg.org or call 412-835-1155.

FAMILY CATECHESIS

(Families with children grades K-5)

This Faith Formation model brings families together for a shared experience that combines Prayer, Education, and Community in a way that forms our Faith for our integrated needs.

Families gather ONCE per month, 8 times (Sept thru Apr), learning the facts that are needed, but more importantly experience ways to model prayer within their families.

These experiences equip families to then complete three sessions at home. The at home materials are completed as a family unit (all grade levels) and on average may take about 30 minutes per week.

MIDDLE SCHOOL MINISTRY

(Children grades 6-8)

Our new program for middle school will follow a youth ministry model - what this means is we will be leaving the classroom model behind and using a more engaging format to catechize our young people in the joys of the faith. We will provide them with an environment in which they will feel at home. Teens/tweens attend in person TWICE a month (Sept. thru early May).

CATECHESIS of the GOOD SHEPHERD

Catechesis of the Good Shepherd training has commenced at St. Catherine Labouré Parish! The first half of Level 1 training ended in the middle of June.

Within the group of 18 individuals, 11 are either from our parish or have a passion for this catechesis and will be part of our CGS team at St. Catherine Labouré. Others have traveled from as far as Butler, the Diocese of Greensburg, and the Diocese of Harrisburg. This is sought out training for a sought out method of Faith Formation Catechesis!

The method allows learning for the “absorbent mind” (Maria Montessori) by way of presentations; either scripture, parable, or signs of the Mass, and introducing “wondering” questions and statements to allow the Holy Spirit to work through the processing of the absorbent mind. Essentially, the catechist has simply become the catalyst between God, Jesus, the Holy Spirit and the children! Gone are the textbooks, desks and methods of information giving and retaining in an attempt to somehow instill relationship building with our Lord.

We ask our parish to please pray for all who are journeying through the training, and specifically those who will directly engage our parish’s children. That they persevere and remain open to embracing this method of leading our children to the Lord!

God Bless you, we thank you:

Shana Alvare
Donna Brown
Abby Brumley
Tony Daniele
Kathy Drummond
Vicky Fitzpatrick



Julianna Heiby
Juliette Heiby
Wendy Hirzel
Lisa Ruggieri
Mike Shipe

If you encounter any of these people, please thank them for their ministry and then, ask them questions! St. Catherine Labouré Parish may just become the “CGS of the South Hills” as we are striving to offer multiple levels for a large age range at the same time to better serve families.

For questions about Catechesis of the Good Shepherd, contact faithformation@scplphg.org or call 412-835-1155.



Pancake Breakfast!



This is an opportunity for those **senior citizens from our parish** to come together for no special reason other than to break bread together, visit with one another, and to be honored by the parish.

When: Saturday, July 13, 2024

Time: 9:30am

Where: LeGras Hall

What: A free pancake breakfast for the Senior Citizens of St. Catherine Labouré Parish

Why: A chance for our senior citizens to get together for a time of food and fellowship and an inspiring reflection

Become a Sponsor!

Support St. Catherine Labouré Parish and our Senior Pancake Breakfast!

Pancake Sponsor: \$500

- Company or Family Name on Welcome Sign
- Recognition on table signs
- Thank you in the Parish Bulletin

Coffee Cart Sponsor: \$100

- Recognition on the coffee area sign
- Thank you in the Parish Bulletin

Contact Tracey Buckley at 412-833-1010 or tbuckley@scplpgh.org to become a sponsor!

Register today!

To register, call or email
Mike Shipe at 412-833-1240
or mshipe@scplpgh.org

Labouré Ladies Guild

TIMELESS TREASURES FLEA MARKET

FRIDAY, JULY 19 FROM 9 AM - 5 PM
SATURDAY, JULY 20 FROM 9 AM - 1PM

NO STROLLERS PERMITTED IN LEGRAS DURING THE SALE

DONATION ITEMS ACCEPTED:

July 15 from noon to 7 p.m.
July 16 and July 17 from 9 a.m. to 5 p.m.
LeGras Parish Center (lower level)

JEWELRY DONATIONS:

Boxes with bags for jewelry donations are located at the doors of both Saint Joan and Saint Louise churches.

Please consider taking a bag and donating necklaces, bracelets, pins, watches, rings, earrings, any kind of jewelry, old or new. The bags can be returned to either church office.

For more information on donating jewelry, contact Dolores Weinheimer at 412-833-0586 or Ann Marie Bargiband at 724-941-5904.

VOLUNTEERS NEEDED:

Set-up days
July 15 (noon & 7:00pm)
July 16, 17 and 18 (9am & 5p.m.)

Days of the Sale
Friday, July 19 (9am & 5pm)
Saturday, July 20 (9am through clean-up).

A great opportunity for 7th and 8th grade, high school or college students looking for service hours.
Also, adults (men & women) are needed to help with sorting, pricing, and set-up.

Whatever time you can spare, whether 1 hour, half a day or all day, will be greatly appreciated. Stay for lunch and meet new friends or catch up with old friends.

To volunteer, contact Mary Frances Glausser at 724-941-5128.



SUGGESTED ITEMS TO DONATE

Jewelry, religious items, women's accessories, purses, children's clothing (only up to size 6), high chairs, strollers, play yards (including all pieces), toys and games, kitchen items, Tupperware, small working appliances, antiques-knickknacks-collectibles, tools (including yard tools), current children and adult books, holiday items, craft, sewing & hobby items. linens, bedspreads, decorative pillows, small furniture pieces (lamps, end tables, bookcases, rocking chairs), centerpieces (e.g., silk arrangements), bound carpets, area rugs, scatter rugs (in like-new condition)

ITEMS UNABLE TO BE ACCEPTED

Tires, large exercise equipment, ski equipment, roller & ice skates, used bike helmets, Christmas trees, stuffed animals, used bed pillows, shoes, televisions, stereos, computers & related equipment, printers, typewriters, sofas or other large furniture, stoves, refrigerators or other large appliances, encyclopedias, text books & National Geographic magazines, VHS tapes, cribs, expired child car seats

Due to lack of storage space, only jewelry can be accepted at the Parish Office before the drop off dates.
If in doubt about your donation contact Mary Frances Glausser at 724-941-5128

Sponsorship
opportunities
available!



St. Louise de Marillac School
and St. Catherine Labouré Parish

HOLY FAMILY PICNIC

SCL Parish Picnic & STL Schoolapalooza

Join us for faith, fun,
food, and fellowship on
Sunday, August 18, 2024!

Mass at Noon
Picnic from 1-4pm

St. Louise de Marillac Church & School
Picnic on the football field and rear parking lot

\$15/family
\$5/couples or individuals



\$12/meal voucher
This includes a plate for hotdogs, hamburgers, and
french fries with repeat visits through the line.



Inflatables - DJ - Climbing Wall
50/50 Raffles - Dunk Tank

Register today!



LUNCH WITH THE SAINTS

Join us as we visit the extraordinary St. Anthony's Chapel
in the Pittsburgh neighborhood of Troy Hill.

Tuesday, August 20th

**SECOND
BUS
ADDED!**
RESERVE YOUR
SEAT TODAY!



\$20 per person which includes
the bus ride, tour, and lunch.

For more details
and to register:





St. Louise de Marillac School and
St. Catherine Labouré Parish



HOLY FAMILY PICNIC

Sponsorship Opportunities

The Holy Family Picnic will be held on Sunday, August 18, 2024!

This combined parish and school event will take place at St. Louise Church and school back field and parking lot. This event raises funds for our parish and school. To defray some of the picnic expenses, we are offering sponsorship opportunities to parishioners, school families, and the local community. Sponsorships can be taken by businesses or families. In addition to the sponsorship opportunities, we encourage you to attend the picnic, enjoy the fellowship, entertainment, have a great meal, and support St. Catherine Labouré Parish and St. Louise de Marillac School all at the same time. We look forward to seeing you there!

SPONSORSHIP LEVELS:

GOLD Sponsor: **\$2,000**

- Signage at the dunk tank
- Free family admission
- 4 meal vouchers
- Recognition on Facebook
- Recognition on webpage
- Recognition in the church bulletin thank you
- Recognition in the monthly Parish magazine thank you
- Individual signage on the grounds at the event

SILVER Sponsor: **\$1,000**

- Signage at one of the inflatables
- Free family admission
- 2 meal vouchers
- Recognition on webpage
- Recognition in the church bulletin thank you
- Recognition in the monthly Parish magazine thank you
- Signage on the grounds at the event

BRONZE Sponsor: **\$500**

- Signage at the DJ booth
- Recognition in the church bulletin thank you
- Recognition in the monthly Parish magazine
- Signage on the grounds at the event

FRIENDS of the Holy Family Picnic: **\$100**

- Recognition in the church bulletin thank you
- Recognition in the monthly Parish magazine
- Signage on the grounds during the event

THANK YOU FOR YOUR SUPPORT!

Yes! We would like to become a sponsor of the "Holy Family Picnic".

Please make check payable to "St. Catherine Labouré Parish"; indicate "Picnic sponsor" in the memo section of the check. Mail this form along with your check to: St. Catherine Labouré Parish, 320 McMurray Rd., Upper St. Clair, PA 15241, Attn: Tracey Buckley. You may also drop the form off at the LeGras Parish Center.

COMPANY or FAMILY NAME: _____

PHONE: _____

CONTACT NAME: _____

EMAIL: _____

MAILING ADDRESS: _____

SPONSORSHIP LEVEL: PLEASE INDICATE YOUR LEVEL OF SPONSORSHIP (CIRCLE ONE):

GOLD SILVER BROZNE FRIENDS

Deadline for sponsorships is Thursday, August 1st

If you have any questions, please contact Tracey Buckley at tbuckley@scplph.org.



DO YOU HAVE A LOVED ONE NEAR END OF LIFE?

IS YOUR LOVED ONE AT HOME, IN HOSPICE OR A NURSING HOME?

THE DIVINE MERCY APOSTOLATE OF SAINT CATHERINE LABOURE PARISH is a ministry of prayer for the sick and dying, and we are available to aid you during this emotionally trying time.

The Divine Mercy Chaplet is a very powerful prayer for the sick and dying asking God to envelop the sick person with His tender mercy. At the request of the family, The Divine Mercy Apostolate of Saint Catherine Laboure, welcomes the opportunity to send 2 or 3 members to pray the Chaplet at the bedside of a loved one. The visit will last approximately 15 minutes. The prayer is available to all, regardless of religion.

The Divine Mercy Chaplet was given to St. Faustina by Jesus to be used as an instrument to proclaim the infinite nature of Jesus' Mercy. Sister Faustina was a nun of the Congregation of Sisters of Our Lady of Mercy in Poland. Our Lord referred to Sister Faustina as the "Apostle of Mercy", and she was the first saint canonized in the 21st Century by Saint Pope John Paul II.

The Divine Mercy Apostolate has members from several local parishes and began formation in 2015. Our Apostolate has been led in formation by Father Daniele Vallecorsa, of St. Louise de Marillac Parish, as well as The Disciples of Divine Mercy in the Holy Face of Jesus, which is under the direction of the Marian Fathers of the Immaculate Conception of Stockbridge, MA.

To arrange for the Divine Mercy Apostolate to visit and pray at the bedside of a loved one, or for more information, contact the parish office at 412-833-1010.

"At the hour of death, I defend as My own glory every soul that will say this Chaplet; or when others say it for a dying person, the pardon is the same. When this Chaplet is said by the bedside of a dying person, God's anger is placated, unfathomable mercy envelops the soul, and the very depths of My tender mercy are moved for the sake of the sorrowful passion of My Son".

DIARY of St. Maria Faustina Kowalska, at 811



Parish Nurse Ministry

House Fires- Not So Obvious Hazards

Are you aware that house fires can begin with **absolutely no flames**?

Over 90% of **laundry fires** occur because lint traps haven't been cleaned after each load. Heat builds causing the lint to overheat and a fire results.



Chemical fires from everyday household items containing flammable chemicals need only a spark or heat to ignite. Ex: Using flammable cleaners around a fireplace; improperly mixing products or improper storage/disposal. Placing rags soaked with paint thinner in a bag can generate enough heat to ignite the bag—no flame necessary.

Charcoal grills improperly maintained or placed too close to a flammable object, including dry grass or plants.

Charging appliances- Albeit small they generate significant heat. Placing them on any flammable surface could risk a fire.

Understand and prevent the hidden ways fires start. Create a plan to safely exit your home, including a designated meeting place to ensure that everyone is accounted for.



ANNUAL MEMBERSHIP DRIVE

The Labouré Ladies Guild is conducting its annual membership drive. Membership is open to all adult women in our Parish. In case you did not receive a letter in the mail or if it has simply slipped your mind, it is not too late to sign up to be included in the 2024/2025 Yearbook.

Guild members meet on the second Thursday of Sept., Oct., Dec., Mar., Apr., and May to enjoy an entertaining program meant for women of all ages. The Guild also sponsors special interest groups, such as the weekly prayer group and monthly book club. And we conduct a Flea Market each July and a Craft Show each November. It is a wonderful way to be active in Parish life, while participating in fun activities and forming new friendships.

Simply complete the information below and return with the \$15 annual dues. Checks are to be made payable to St. Catherine Labouré Parish and can be dropped in the collection basket or dropped off or mailed to the Parish Office.



MEMBERSHIP APPLICATION LABOURÉ LADIES GUILD, 2024-2025

Last Name _____ First Name _____ Husband's Name _____

Address _____ City _____ Zip _____

Landline Phone _____ Cell Phone _____ Email _____

**SAFE
ENVIRONMENT
CLEARANCE
PROCESS**

**Obtaining Clearances for
Employees and Volunteers
Parish & School**



Go to <https://diopitt.org/compliance> and follow the appropriate steps if you are a new user or if you already have an existing account.

In order to be eligible to volunteer or work in the parish or school it is mandatory that you complete the Diocesan Safe Environment Process prior to employment or participating in any parish activity.

If you have been contacted to renew your clearances please respond as soon as possible.

Parish Safe Environment Coordinator:
Emily Menardi
emenardi@scldpgh.org

School Safe Environment Coordinator:
Heather Schwarz
hschwarz@stlouisedemarillac.org

**SAFE ENVIRONMENT
RECERTIFICATION FOR EXISTING
EMPLOYEES & VOLUNTEERS**

**Protecting God's Children Maltreatment 3.2
and Vulnerable Adults Combined**

- This training is required for all clergy, staff, and volunteers as a follow-up to the Protecting God's Children course. This online training will take approximately 70 minutes to complete and will need to be recertified every three years.

Please log in at www.virtusonline.org

- If you don't know your login information, click the "need login information" link under the password box. All volunteers have an account, regardless of whether they have accessed the system in the past.

**Saint Louise de Marillac School is
looking to fill the Athletic Director
Position. This is a volunteer position:**



Job Summary: Saint Louise de Marillac School is seeking a dedicated Athletic Director to lead and manage our athletic programs. The Athletic Director will be responsible for overseeing all aspects of the athletic department, including budgeting, scheduling, compliance, and promoting a positive and inclusive athletic culture rooted in Catholic values. The ideal candidate will have a passion for sports, strong leadership skills, and a commitment to student-athlete development and spiritual growth.

Key Responsibilities:

- Develop and implement strategic plans for the athletic department in alignment with the school's mission and Catholic values.
- Oversee the recruitment of coaches and staff.
- Manage the athletic department budget, including fundraising efforts.
- Ensure compliance with all school, diocesan, athletic policies and regulations.
- Schedule and coordinate athletic events, practices, and competitions.
- Promote and maintain positive relationships with students, parents, faculty, and the community.
- Foster a safe, inclusive, and positive environment for all student-athletes.
- Represent the school at meetings, and events related to athletics.
- Integrate faith and spirituality into the athletic programs and activities.

Please send letter of interest to:
Mr. Kenneth Klase,
Principal, Saint Louise de Marillac School
kklase@stlouisedemarillac.org

*The Diocese of
Pittsburgh has
pre-purchased 250
Congress passes for
you to claim,
FREE of charge.
Please contact
Sr. Rose Walatka at
412-456-5646
or rwalatka@diopitt.org
for details on how to
claim your free pass.*

**WILL
YOU
BE THERE?**

You don't want to miss this moment!

**National Eucharistic
Congress**

July 17 - 21, 2024
Indianapolis, IN

**250 passes
available!**



SAINT LOUISE DE MARILLAC SCHOOL NEWS



Mr. Ken Klase, Principal
kklase@stlouisedemarillac.org

Mrs. Christine Makowski, Secretary
cmakowski@stlouisedemarillac.org

Mrs. Heather Schwarz, Administrative
and Safe Environment
hschwarz@stlouisedemarillac.org

www.stlouiseschoolpa.org
412-835-0600

Thank you to our Diamond and Platinum Partners in Education St. Louise de Marillac Catholic School

2023-2024 School Year
Inspiring Tomorrow's Leaders

DIAMOND SPONSORS:



THE TIMOTHY
DUNLAP FAMILY



THE VANHIMBERGEN
FAMILY



PLATINUM SPONSORS:



24/25 School Enrollment—Our enrollment for the 24/25 school year is underway!

At St. Louise School, we are dedicated to excellence in education of each child within the framework of the Gospel and the tradition of the Catholic Church. Student life at St. Louise is challenging, creative, engaging and rewarding. We encourage you to visit our website at www.stlouiseschoolpa.org or call 412-835-0600 to schedule a tour.

Currently, we are starting a wait list for the following classes as they are currently full.

3 Year AM Preschool (PM Available)

4 Year AM Preschool (PM Available)

Transition

Kindergarten

1st Grade

2nd Grade

Support STL School become a 2024-2025 Partner in Education!

Scan the QR code for more information



CONTACT INFORMATION

Father Jeffrey Craig
Pastor
jcraig@scplpgh.org

Father Jon Brzek
Parochial Vicar
jbrzek@diopitt.org

Deacon Richard R. Cessar
Permanent Deacon
rcessar@scplpgh.org

Mrs. Nancy Beaver
Faith Formation
Administrative Assistant
nbeaver@scplpgh.org

Mrs. Tracey Buckley
Director of Communications and
Advancement
tbuckley@scplpgh.org

Mr. Michael Buechel
Maintenance Supervisor
mbuechel@scplpgh.org

Mrs. Laurie Edington
Secretary
ledington@scplpgh.org

Mrs. Andrea Erfort
Weekend Sacristan—Saint Louise

Miss Kirstin Essig
Director of Youth, Young Adult
Ministry and Evangelization
kessig@scplpgh.org

Mr. Gregory Fincham
Music Director
gfincham@scplpgh.org

Ms. Kathy Kalcevich, Business Manager
kkalcevich@scplpgh.org

Marcella M. Dalton-Lantzman
Pastoral Associate
mlantzman@scplpgh.org

Ms. Gerre Lorincy, Secretary
glorincy@scplpgh.org

Mrs. Emily Menardi, Safe Environment
Coordinator—emenardi@scplpgh.org

Mr. A. J. Minyon
Facilities Maintenance Coordinator

Ms. Renee Pollice, Office Manager
rpollice@scplpgh.org

Mrs. Virginia Rockenstein
Evening Receptionist—Saint Louise

Mrs. Lisa Ruggieri
Faith Formation Coordinator
lruggieri@scplpgh.org

Mr. Michael Shipe
Director of Pastoral Care and
Social Outreach
mshipe@scplpgh.org

Mrs. Mary Tracey
Church Sacristan—Saint Joan
mtracey@scplpgh.org

RCIA Team

Brian Tittmann & Lexi Martell
RCIA@scplpgh.org

Saint Catherine Labouré Parish

412-833-1010
<https://scplpgh.org/>

Parish Office Hours at Saint Louise

M, T, W, TH | 8:00am-7:00pm

Friday | 8:00am-Noon

Saturday | 9:00am-3:00pm

Sunday | 9:00am-2:00pm

*(The parish office is closed every
Wednesday from Noon-1:00pm)*

Faith Formation Office located at Saint Joan

412-835-1155; Fax: 412-835-1764

Pastoral Care & Social Outreach Office: 412-833-1240

Youth Ministry Office

412-833-5757

Diocesan Victim Assistance Hotline
1-888-808-1235

Diocesan Victim Assistance
Coordinator

412-456-3093 (Office)

PA Child Line 1-800-932-0313 or Call
911 immediately if a child is in danger

PARISH PASTORAL COUNCIL / COMMITTEES

Mike Zukowski	Communication & Public Relations	mzukowski@scplpgh.org
Nikki Eckenrode	Communication & Public Relations	neckenrode@scplpgh.org
Christina Mozes	Evangelization & Discipleship	cmozes@scplpgh.org
Chris Pritz	Evangelization & Discipleship	cpritz@scplpgh.org
Scott Carnivale	Hospitality & Fellowship	scarnivale@scplpgh.org
Bill Collins	Hospitality & Fellowship	bcollins@scplpgh.org
Susan Rosati	Outreach	srosati@scplpgh.org
Ian Valenta	Outreach	ivalenta@scplpgh.org
Michael Dobos	Safety, Buildings & Grounds	mdobos@scplpgh.org
Jim Drummond	Safety, Buildings & Grounds	jdrummond@scplpgh.org
Don Krawiec	Worship	dkrawiec@scplpgh.org
Laurie Minczeski	Worship	lminczeski@scplpgh.org

BEINHAUER

Family Funeral Homes

Cemetery and Cremation Services

Honored to provide
discounts to veterans

Call today 724-969-0200



- Seamless Gutter Install
- Gutter Guards - Leaf Protection
- Repairs & Cleaning
- Fascia & Soffit

Parkland
Owned

724-271-8014

www.brothersgutters.com



Dione Cahillane

St. Louise Alumna

412-334-3019

701 Washington Road
Pittsburgh, PA 15228

dionecahillane@howardhanna.com



440 Valley Brook Rd. McMurray
149 McClelland Rd Canonsburg
1403 McLaughlin Run Rd. Pittsburgh
(Upper St. Clair)
(724) 941-6608 • www.opekauto.com



Plumbing, Heating, or AC?

Answer: McKean

Residential/Commercial
Parts • Service • Installation

724.225.6260

www.mckeanplumbing.com

PA0985

LET'S GROW YOUR BUSINESS

Place Your Ad Here and Support Our Parish!

CONTACT ME Mike McAleer

MMcAleer@4LPi.com

(800) 477-4574 6307

Latkowski's Auto Service Inc.

WE Make Cars Happy!!

TIRES • TOWING • STATE EMISSIONS INSPECTION • DIAGNOSTICS

6430 Library Rd.
South Park, PA 15129

412-835-2210

412-835-2250



DOES YOUR NONPROFIT
ORGANIZATION NEED
A NEWSLETTER?

Engaging, ad-supported
print and digital newsletters
to reach your community.

Visit lpicommunities.com



Place Your Ad Here and
Support our Parish!

Instantly create and
purchase an ad with

AD
CREATOR
STUDIO



Washington County's premier
luxury custom home builder



GrazianiHomes.com

724-745-0654



NEVER MISS OUR BULLETIN!

SUBSCRIBE

Have our bulletin emailed
to you every week.



Visit www.parishesonline.com



For ad info. call 1-800-477-4574 • www.4lp.com

14-1380

GOOD ORTHODONTICS
 Robert F. Good, II, D.M.D., M.D.S.
 Ronald S. Good, D.M.D., M.S.
"We shall never know all the good that a simple smile can do." -Mother Teresa
 WASHINGTON PLEASANT HILLS MOUNT LEBANON
 724-225-1114 412-655-4660 412-344-4663

SOUTH HILLS
 CHRYSLER DODGE JEEP RAM KIA
 ROUTE 19 PETERS TOWNSHIP
 WWW.SOUTHHILLSAUTO.COM 724-941-4300

The Eye Gallery, Inc. Manufacturing Opticians
 Wholesale Prices To The Public
 609 E. McMurray Rd. (724) 941-3930
 JIM DOTY, OPTICIAN • EYE EXAMS AND CONTACTS

ROBERT'S TREE AND LANDSCAPE
 Tree Removal / Storm Damage
 Pruning • Mulching • Stump Grinding
412-892-8200
 Fully Insured
 FREE Estimates
 Senior Discounts

Lindsay Mongelli, REALTOR®
 412-831-0100 OFFICE
 412-583-8148 CELL
 lindsaymongelli@tprsold.com
 lindsaymongelli.thepreferredrealty.com

Fox in a Box
 ART & CRAFT GIFTSHOP
 724.413.3251
 • HANDMADE GIFTS
 • DO-IT-YOURSELF CRAFTS
 • BIRTHDAY PARTIES
 www.foxinaboxbysilvi.com

MCMURRAY GARAGE DOORS
 Garage Door & Opener
 Installation & Service
412-848-8455
 FREE ESTIMATES
 SENIOR DISCOUNTS • FULLY INSURED
 Catholic Owned & Operated
 Servicing the South Hills
 and Surrounding Areas
 PA# 075490

JIM VERLATO
CPA Income Tax & Accounting
412-831-5411

Pasta Too
 For All Your Catering Needs!
 Gift Certificates Available!
 Family Italian Restaurant
412-831-3400
 www.pasta-too.com

Forbes Best-in-State Wealth Management Team 2023 - 2024
 Interested in seeing how charitable giving strategies can fit into your financial plan?
 Reach out to our team to learn more!



Phone: 724.743.3301 | Text Us: 724.888.5684
 www.McNamaralInvestmentGroup.com

THE MCNAMARA INVESTMENT GROUP
 OF JANNEY MONTGOMERY SCOTT LLC

Janney

For more information about Janney, please see Janney's Relationship Summary (Form CRS) on www.janney.com/crs which details all material facts about the scope and terms of our relationship with you and any potential conflicts of interest.

375 SOUTHPOINTE BLVD. SUITE 300, CANONSBURG, PA 15317
 © JANNEY MONTGOMERY SCOTT LLC • MEMBER: NYSE, FINRA, SIPC

BUCCOS ROOFING
(724) 554-6224
 www.buccosroofing.com

SHORT STAFFED?
 Place an ad here to find new local talent for your business.



CALL 800-477-4574

METROPOLITAN window company
 Home of the Infinity from Marvin®
 Fiberglass Window
 Windows • Doors **412-655-8411**
 4672 Clairton Blvd. (Rt. 51), Pittsburgh, PA 15236

John, Justin, Maggie Schmotzer
 Parishioners



COMPLETE HOME REMODELING

INSTALLATIONS
INKS
REMODELING

Roofing
 Siding
 Windows
 Porches
 Decks

**Bathrooms • Kitchens
 Gamerooms**

412-653-3100
 Free In-Home Estimates • Fully Insured
 Over 35 Years Experience

SUPPORT OUR PARISH
 Local business ads sponsor the printing of our bulletin.
4lpi.com/adcreator

Lifeline PHYSICAL THERAPY
412-474-0183
 155 McMurray Road, Pittsburgh
 www.lifeline-therapy.com



Kevin Carbone
 MPT, CSCS

Full Service • Residential • Commercial
ALL PRO
PLUMBING & HEATING
412-595-8204
 Plumbing • Heating • Air Conditioning
 John Oakes
 Registered Master Plumber

AlpinePools.com
 Pools, Spas & Hot Tubs
412.854.2202
 6070 Library Rd. (Rt 88)
 Bethel Park, PA

O.Z. ENTERPRISES
INC.

Brian O'Neill
2415 Kings Lane
Pittsburgh
724.695.5600

Dr. Terra Mauro, PhD, LPC
Licensed Professional Counselor
Counseling Works for Wellness
Specialty in Christian Counseling
161 Waterdam Road
Suite 260, McMurray, PA 15317
724-966-4160
tm@privatepracticecounseling.com

HEISLER'S
MARKET
Monday - Saturday: 7:30am - 9:00pm
Sunday: 8:00am - 8:00pm
(724) 941-8250 • www.heislersonline.com

SANTEL Landscape & Design

Quality work at value pricing!

OUR SERVICES INCLUDE:

New Landscape Designs & Shrubbery
Hardscape: Retaining Walls, Concrete or Paver Patios and Sidewalks, Concrete Driveways, Firepits and Seatwalls

"Watch Your
Investment Grow"



Fully
Insured

Call Now for Free Estimates:

412-835-1854

Visit our website at

www.santellandscapeanddesign.com

**Start Your
Journey Now**
**SCHOLARSHIPS
AVAILABLE!**



**DAVID J. HENNEY
FUNERAL HOME**
6364 Library Rd., Library, PA • 412-835-0616

VENETIA
LANDSCAPE SUPPLY
(724) 348-5518
www.venetiasupply.com

Commercial & Residential - New & Old Work - Bucket Truck
Free Estimates - Fully Insured - 24 hr. Service
STALEY ELECTRIC INC.
Registered Electrical Contractor
412-851-0314 - StaleyElectricInc.com
Gary Staley - Parishioner

SUPER DUPER Carpet Cleaning
CARPET AND DUCT CLEANING
412-608-5414
www.superdupercarpetcleaning.com

COLEMAN MITCHELL HEATING & AIR
CONDITIONING
Carrier
www.colemanmitchell.com
412.221.2248
info@colemanmitchell.com
24 HOUR SERVICE

Preferred
DRAPERY & BLINDS
~ Free Shop at Home ~
2871 Washington Rd • McMurray
Call: 724-969-0481
www.pdandb.net

KRAH Family Dentistry
Thomas R. Krah, D.M.D., Parishioner
Gentle General Dentistry
607 East McMurray Road
McMurray, PA 15317
724-941-2929
Evening & Saturday Appts.

GRIFFITH
FUNERAL HOME, INC.
Caring guidance and compassion
from our family to yours."
412-655-4600
William E. Griffith, Jr., Supervisor
Funeral & Cremation Services
GriffithFH.com • PghCremationCenter.com
5636 Brownsville Rd., South Park

Stephen R. Poremski
Registered Master Plumber
Residential • Commercial • 24 Hr Svc
412-833-7600
• PLUMBING
• HEATING
• EXCAVATING

FRANK'S TIRE & AUTOMOTIVE
Bethel Industrial Park • 3135 Industrial Boulevard
(412) 851-0855 • frankstireandauto.com
Parishioner
Complete Automotive Repair • Engine Diagnostics
Air Conditioning • Towing & Collision Repair

MFD **TOP**
412.835.4887
www.manalodmd.com

Goff Backa Alfera & Company, LLC
TAX PLANNING & PREPARATION
BUSINESS CONSULTING & VALUATION
QUICKBOOKS ACCOUNTING
RICHARD J. ALFERA, CPA
PRESIDENT
RJALFERA@GBACO.COM
(412) 885-5045
www.gbaco.com

Supreme Cleaners
"The Cleaners
That Quality Built!"
Family Owned and Serving the
Community for Over 100 Years
Specializing in...
• Dry Cleaning • Leather &
• Shirt Laundering • Suede Care
• Alterations • Wedding Services
3400 South Park Rd. Bethel Park
412.835.5240
Supreme-Cleaners.biz

ADVANCED
Orthopaedics & Rehabilitation
100 Trich Dr., Ste. 2, Washington
724.225.8657
www.advancedorthopaedics.net
Patrick McCulloch, MD
Board Certified Hand Surgeon
Parishioner & Supporter of St. Louise de Marillac

T&R Driveway Supplies
Bulk Materials • Topsoil • Mulches & More!
Upper St. Clair, PA | 412-221-2577
Bridgeville, PA | 412-221-0505
www.tardrivewaysupplies.com

MARATHON
KUDLA'S SERVICE CENTER, LLC
Inspections, Tires,
Batteries, General Repairs
412-831-1630
412-835-9789
"Serving the South Hills since 1957"
Shop: 7-5 M-F • 7-2 Sat
Gas: 6am-9pm M-F
Convenience: 7am-9pm Sat-Sun
2733 South Park Road

Five Star Drywall Inc.
859 Missionary Drive, Ste. 220
Pittsburgh, PA 15236
(412) 885-7190

Manion Plumbing
Commercial
& Light Industrial
Plumbing

MEDICARE HEALTH INSURANCE
Need help with Medicare?
Let us make your transition into MEDICARE easy!
Thinking about switching plans? We offer many companies and plans.
Name/Nombre
Call Cassy Booker
Telephone Number / Número de teléfono
Bus: 412-344-2800
Cell: 412-680-8038
Email / Correo electrónico
cassyphillipsins@aol.com
Insurance Consultants of Pgh
300 Mt. Lebanon Blvd., Ste 205
Pittsburgh, PA 15234

Robert J. Winters, Esq.
Attorney At Law
Wills & Trusts
Estate Planning
Business Law
Will Make House Calls
412-281-0587
rwinters@grblaw.com



PITTSBURGH GASTROENTEROLOGY ASSOCIATES
2589 Boyce Plaza, Ste. 5, Pittsburgh, PA 15241
Satellite Office in Monongahela, PA
412.232.8104
David L. Limauro, M.D. • Mark A. Cedar, D.O. • Nicholas A. Bellicini, D.O. • Xuong Lu, M.D. • Jungmin Leo Lee, M.D. • Lisa A. Oliva, D.O. • Theresa Schuerle, D.O. • Bridger Clarke, M.D.
Colon Cancer Screenings Available (Your insurance will cover a routine colon cancer screening at age 45)
www.pghgastro.com

SOUTH HILLS ENDOSCOPY CENTER
2589 Boyce Plaza, Pittsburgh, PA 15241
412.838.0400

VALLEY HEATING & AIR CONDITIONING INC.
Heating • Cooling • Humidifiers • Air Cleaners

HEATING • COOLING • HUMIDIFIERS • AIR CLEANERS
Residential • Commercial • Sales • Service • Maintenance
724-941-9793
www.valleyhtg.com
A Shearer Company