



OUR LADY OF REFUGE, Orchard Lake MI

Today is The Epiphany of the Lord

January 2, 2022

Mission Statement

Under the protection of Our Lady of Refuge and guided by the Holy Spirit, our parish family is dedicated to the propagation and deepening of our faith, rooted in the Sacraments, Sacred Scripture and Tradition of the Catholic Church. As stewards of the Father's gifts, we strive to reflect the love of Christ through the support of our parish and in our outreach and service to others.

*Christmas Greetings
And Happy New Year*



On behalf of Msgr. McEnhill, Fr. Iwanczuk, Fr. Kowal, Fr. Banazak, Fr. Brooks, Fr. Sabadell and the parish staff we wish you all a very Happy and safe New Year!

MASS TIMES	READINGS	MASS/PRAYER INTENTIONS	Jan 3—11, 2022
Day/Date/Time	Readings	Mass Intention	Presider/Lector
Monday January 3 8:15am	1 Jn 3:22—4:6 Mt 4:12-17, 23-25	We pray for Sue Rogalski requested by Paul & Carol Bishop	Msgr. McEnhill
Tuesday January 4 8:15am	1 Jn 4:7-10 Mk 6:34-44		Msgr. McEnhill
Wednesday January 5 8:15am	1 Jn 4:11-18 Mk 6:45-52	We pray for Grace & Everett Dropps (deceased) requested by John Currell	Msgr. McEnhill
Thursday January 6 NO MASS	1 Jn 4:19—5:4 Lk 4:14-22a		
Friday January 7 8:15am	1 Jn 5:5-13 Lk 5:12-16		Msgr. McEnhill
Saturday January 8 5:00pm	See Sunday Readings	We pray for Amy Montgomery (deceased) requested by James & Celeste Montgomery We pray for Joe Panian (deceased) requested by Dar Panian We pray for Fawzi Shaya (deceased) requested by the Shaya Family	Fr. Sabadell P. Seif E. Escobedo
Sunday January 9th The Baptism of the Lord 8:00am 9:30am 11:30am	Is 42:1-4, 6-7 Acts 10:34-38 Lk 3:15-16, 21-22	8:00am 9:30am We pray for Ray & Ann Gedeon (deceased) requested by Jim & Jean Majercik We pray for Wayne Gwizdala (deceased) requested by the Hampton Family 11:30am	8am Fr. Brooks M. Harris G. Harris 9:30am Msgr. McEnhill G. Klimmek T. Klimmek 11:30am Msgr. McEnhill D. Dickerson J. Whalen
Monday January 10 8:15am	1 Sm 1:1-8 Mk 1:14-20	We pray for Mary C. Currell (deceased) requested by John Currell We pray for Harold Swales, Jr. (deceased) requested by the Swales & Barcewicz Families	Msgr. McEnhill
Tuesday January 11 8:15am	1 Sm 1:9-20 Mk 1:21-28		Msgr. McEnhill

**Attention: Our Lady of Refuge Parish and School
weather related cancellations**



Please be advised if the school is closed due to weather conditions, the **ENTIRE** campus is closed. (The only exception is the morning Mass). This includes **ALL** school activities, sporting events, practices, open gym, etc. As well as any parish programs, meetings, prayer groups, etc.

The safety of our school families and our parishioners is our utmost concern.

Lisa Marie Blanek

WORSHIP
248.418.7212 ext. 1114

lblank@olorcc.org



New Holy Family Display

Throughout our Christmas Season our Holy Family will be here in our narthex. Again, thank you for all those involved in making this happen!! We would like to send a very special thank you to Paul Scheer for his amazing carpentry of the manger! Also, Julie Scheer Smith for our Baby Jesus!! Our display will continue to be enhanced through sponsorship of figures and our Art, Bake and Craft Sale event of November 2022. May you all have a blessed 2022!!

CHRISTIAN SERVICE

Suzanne Barcewicz

248-682-4099

cs@olorcc.org

Angel's Place Maxwell Home

Do you like to cook?? Or perhaps order carry out?

Then you would be a great candidate to sign up to take meals to **Angel's Place Maxwell home** located on Saddlewood Dr. near Marshbank Park.

Why are we doing this?

The men who live on Saddlewood Dr., known as Maxwell home, are in advanced age and are in need of extra care from the staff. Supplying the home with dinner 3 nights a week allows the staff to focus on the care of the men and are not distracted by meal prep.

How does it work?

Sign up first through signup genius. (link below)

Please drop off meals between 3-5 p.m. There are 5 men and 2 staff members. There is a cooler on the porch or just ring the bell. You can bring their meal warm or let them heat it up with directions. Please use a disposable container so that you are not looking to receive your dish back.

When you sign up through sign up genius (link below) please fill in what you plan to bring so there are limited duplications. The men and staff at Angel's place are very appreciative of every meal they receive. There are not any dietary restrictions.

The address and phone number for Angel's Place are on the sign up genius page:

<https://www.signupgenius.com/go/70A0D49A8AB2BAAF58-angels>

For more information, contact Suzanne at 248-682-4099 or cs@olorcc.org

Thank You

Dear Generous Parishioners,

A sincere thank you for your kind donations to St. Vincent de Paul over this holy Advent season, whether it be taking a tag off the Giving Tree, making a donation in the poor box, or using your designated SVdP envelopes. As is stated in our Mission Statement, we Vincentians "witness God's love by embracing all works of charity and justice"...and "see the face of Christ in those we

serve". Your generosity has helped us to achieve this mission, and enabled us to help our neighbors in need all year long, and for this we are so grateful.

Blessings and thank you again, Our Lady of Refuge Conference Society of St. Vincent DePaul



Unleash the Gospel – Living and Sharing the Good News

It was not made known to people in other generations as it has now been revealed to His holy apostles and prophets by the Spirit: that the Gentiles are coheirs, members of the same body, and copartners in the promise in Christ Jesus through the Gospel. (Ephesians 3: 5-6)

The Magi prostrated themselves and did the Lord homage. Then they opened their treasures and offered Him gifts of gold, frankincense, and myrrh. (Matthew 2:11)

Epiphany means manifestation or revelation. Today's feast of the Epiphany celebrates the manifestation of the incarnated Lord as baby Jesus to the Gentiles, as represented by the Magi or wise men from the east. The Magi chose to set out on a journey following an extraordinary star, because they believed that the journey would bring them to the King of Kings. When they reached the end of their journey in Bethlehem, they knelt down in homage to worship Jesus, because they knew they were in the presence of a mighty king. The birth of Jesus in Bethlehem fulfilled the prophecy of Isaiah that a great ruler would come from Bethlehem and be a shepherd to His people. As St. Paul explains in the passage from Ephesians, Jesus, the Shepherd, has come for all people, not just the Jews. As a Shepherd, Jesus kindly and mercifully tends His worldwide flock.

In the passage from Matthew's Gospel, the Magi demonstrate the proper response to Jesus by adoring Him, praising Him, and bringing Him gifts. Their gifts reveal who Jesus is. The gold, a symbol of royalty, shows the Kingship of Jesus over the entire world. The frankincense, which was used in the worship of God in the temple, speaks to the divinity and royal priesthood of Jesus. The myrrh, an ointment for anointing kings and burial preparation, foreshadowed the death of Jesus, the Savior, who would rise on the third day and conquer death forever.

What is our response to Jesus, who manifests Himself through prayer, Scripture, Tradition, and the Sacraments? We can put all our gifts and talents at the disposal of the Lord as we unleash the Gospel in our everyday lives. We can humbly and sincerely let the sweet incense of our daily prayers for others and the new evangelization ascend to God. We can seek the gold of wisdom offered in meditating on Scripture, and sharing its joyful message with others. Reverencing the Traditions of the Church and frequently participating in the Sacraments enables us to be open to the presence of Jesus and bring Him to others. Lastly, the myrrh of daily sacrifices that we make for ourselves and others, the dying to ourselves and our sins, helps us experience the sanctification for which we all strive. By giving Jesus our lives, our gratitude, our praise and adoration, and all our good works each day, we can transform the world, one person at a time. (Dr. Scott Hahn, *The Gospel of Matthew*, pg.19)

Pray. Encounter. Grow. Witness.

"The Search"

Join Our Lady of Refuge as we explore our faith through new perspectives & videos by Chris Stefanick.

February 2 - March 23
7:00 - 8:30 pm
Wednesdays via Zoom

In these unprecedented times, the essential human questions are still the same. Who am I? What do I want? Is there a point to my life?

Cost: \$10 to cover program workbooks

Please RSVP to ym@olorcc.org
by January 19th

A Formed.org based program

We will not meet on Wednesday, March 2nd, 2022
(Ash Wednesday)

Why Be Registered?

Are you registered at Our Lady of Refuge parish? Sometimes, people attend Mass at this parish for several years, but never officially register. Registering in a parish is a declaration of your desire to be part of a Catholic community and to make a commitment to the life of Our Lady of Refuge community.

Being a registered parishioner makes the process much easier when it is time for baptisms, Faith Formation registration, weddings, when asked to be a baptismal or Confirmation sponsor, and even funerals.

If you would like to register in the parish, please call Msgr. McEnhill, at (248) 682-0920 or see him after any Mass. He will meet with you and give you a welcome packet to fill out, it only takes a few moments. We welcome you to our parish family!



Father Jason Brooks
When: Wednesday,
January 19th.
7:00—8:30pm

Where: Our Lady of Refuge Church
Join us for this Holy Spirit filled event.



Jerry Allsteadt
Andrew Hailo
Diana Winkler

Pray for the men and women who serve in our Armed Forces

“Dear Lord Jesus and Mary, Mother of God, hold all these brave souls in the palm of your hand; comfort them and their families. Send angels of protection, love and comfort to all the service men and women still at war, bring them home safely and comfort their families. We ask this through Christ Our Lord, Amen.”

- | | |
|-----------------------|-------------|
| Rev. Przemyslaw Nowak | Army |
| Chaplain | |
| Christopher Bowman | Coast Guard |
| Clare Brinkman | Coast Guard |
| Daniel Culbertson | Navy |
| Michelle Culliver | Army |
| Nora Dinverno | Army |
| Steven Dinverno | Army |
| Nicholas Harbaugh | Marines |
| Joshua Hartley | Air Force |
| Nova Howard | Army |
| Gunnar Ottman | Army |

Please contact Cora Armitage at 248 736-6228 to add or remove a name.

- A. To add a person to the bulletin/board Military listing please provide:
1. First and Last Name
 2. Current rank
 3. Branch of Service
- B. As the contact for the service member (not for publication) please provide:
- 1 Your Name
 - 2 Your phone number or e-mail address
 - 3 A current address for the service member.

ONLINE GIVING

Simplify your life try our Online Giving! Visit our website to sign up and to begin contributing automatically to our parish. You can use any of your checking or savings accounts and the funds will be automatically transferred to our parish bank account. You can also use any of the major credit cards, American Express, Discover, MasterCard and Visa. Go to www.olorcc.org to get started.



Charles Bemiss
 Pre-Theology I
 St. Isaac Jogues
 Saint Clair Shores

Prayer for Vocations

Heavenly Father, Lord of the Harvest, call forth vocations to the priesthood from our archdiocese and our families.

Jesus, Eternal High Priest, give us men willing to sacrifice and serve. Make their hearts after your own Sacred Heart.

Holy Sprit, Everlasting Love between the Father and Son, strengthen, inspire, and set men on fire with divine charity. Grant them the courage to say yes to their vocation. Mold them into the men they were called to be.

Holy Mary, Mother of God, Mother of Priests, be a comfort and protection to your sons discerning the priesthood. Walk with them as you walked next to your Son as he carried the burden of our redemption. Let them feel your tender love and companionship, knowing you will never abandon them on their journey.

Immaculate Heart of Mary, pray for us.

St. John Vianney, patron saint of priests, pray for us

St. Anne patroness of Detroit, pray for us.

Send us a new generation of Priests!

DIRECTORY

OUR LADY OF REFUGE

3725 Erie Drive, Orchard Lake MI 48324
 Parish Office hours M-Th 9:00am– 5:00pm

Parish Office 248-682-0920
 Fax 248-682-3794
 Web Site: www.olorcc.org
 email: secretary@olorcc.org
 Find us on Facebook

PASTOR Msgr. Gerald A. McEnhill

WEEKEND MASSES

Saturday 5:00pm
 Sunday 8:00, 9:30 & 11:30am

DAILY MASS SCHEDULE

8:15am Mon, Tues, Wed, Fri.

SACRAMENT OF RECONCILIATION

Saturday 3:30-4:30pm

BAPTISMS (By appointment)

2nd Sunday of the Month 1:00pm
 (subject to change)

MARRIAGES Six Months Notice By Appointment

PARISH REGISTRATION

Meet with him after any Mass or Contact
 Monsignor McEnhill (248) 682-0920

PARISH STAFF

Lisa Marie Blaneck, Worship
 248-418-7212

Michael Garnett, Liturgical Music
 248-418-7240

Suzanne Barcewicz, Coordinator of Christian Service
 248-682-4099

Denette Plant, Coordinator of Rel. Ed.
 248-418-7242 or 248-682-6381

Lauryn Coules, Youth Ministry
 248-418-7244

Eva Ashor, Business Manager
 248-682-0920 ext. 1111

Carol Bishop, Parish Secretary
 248-682-0920 ext. 1100

SCHOOL (248) 682-3422

Dennis Rapal, Principal
 Peggy Houle, School Secretary

PARISH COUNCIL

- Anita McCabe Chairperson, Parish Rep.
- Amy Bachulis, Vice-Chair, Parish Rep.
- Sukiwi Gunawan Parish Rep.
- Lenore Vansant Parish Rep.
- Tadd Klimmek Parish Rep.
- Leslie Demyan . Parish Rep./Worship Rep.
- Bronia Maiorano .. Christian Service Rep.
- Linda Godell Stewardship Rep.
- Jan Mittelstaedt Education Rep.
- Victoria Brender Youth Rep.
- Michael Blaneck Vicariate Rep.
- Msgr. Gerald McEnhill Pastor

Editor - Carol Bishop 682-0920

Copy Deadline Tuesdays 12:00 noon
 rev 8/16/2021 Printed with soy ink

Therefore, if anyone is in
Christ, he is a new
creation. The old has
passed away; behold, the
new has come.

—2 Cor 5:17 (ESV)



May God's peace be upon
you and remain with you
throughout the year.

LAMPHERE'S TREE SERVICE

Complete Tree & Stump Removal
24 Hr. Emergency Service
Trimming • Fully Ins.
LARRY LAMPHERE Member St. Perpetua
248-673-8536

Providing In-Home
Senior Care with Trusted
and Caring Home Health Aides,
Companions and Nurses.


inspire HOME CARE
inspirehomecare.com | 248.972.5528

A CLEAR REFLECTION OF QUALITY

REID

GLASS

www.reidglass.com

Phone: (248) 353.5770 • Fax: (248) 353.0678
22223 Telegraph Road • Southfield, MI 48033



WaterWorkPlumbing.com

Senior Discounts **248-213-9248**

24 Hr. Emergency Service

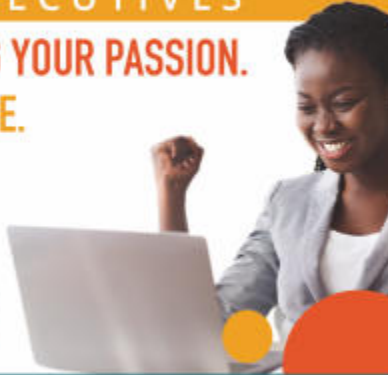
\$20 OFF ANY SERVICE

WE'RE HIRING

AD SALES EXECUTIVES

BE YOURSELF. BRING YOUR PASSION.
WORK WITH PURPOSE.

- Paid Training
- Some Travel
- Work-Life Balance
- Full-Time with Benefits
- Serve Your Community



Contact us at careers@4lpi.com
www.4lpi.com/careers

McCabe Funeral Home

One Name...One Family...Over 128 Years

FARMINGTON HILLS CANTON
31950 W. Twelve Mile Rd. 851 North Canton Center Rd.
(248) 553-0120 (734) 981-4530

www.McCabeFuneralHome.com

FREE AD DESIGN

WITH PURCHASE OF THIS SPACE



CALL 800.477.4574

NEVER MISS A BULLETIN !

Sign up to have our weekly parish bulletin
emailed to you at www.parishesonline.com



4-D-5-4

For ad info. call 1-800-477-4574 • www.lpicommunities.com

15-0031

A.J. DESMOND & SONS
FUNERAL DIRECTORS

For your family's peace of mind, contact us to begin your advanced planning

Troy • Crooks Rd Troy • Rochester Rd
248-362-2500 248-689-0700

Woodward
248-549-0500

www.AJDesmond.com



SPENCER ROOFING

1748 Traditional Dr, Ste B.
Walled Lake, MI

248-926-5800

Keego Harbor Dairy Queen®



Treat Yourself Today!



RICK BARTUS

Parish Member



Town & Country

Connecting People with Homes

248-909-4848

bartus@comcast.net

ZILKA

Heating & Cooling, Inc.

A Full Service & Installation Company

Serving the Parish for over 60 Years

AMERICAN STANDARD

TEMPSTAR & AMANA PRODUCTS

You've used the rest...



Now try the BEST! SENIOR SAVINGS

Call Today! 248-682-1210

www.zilkaheatingcooling.com

2595 Orchard Lake Rd., Sylvan Lake

Mention This Ad and Receive \$10 Off Your Next Service Visit



Phillip Mansour

PRESIDENT | PARISHIONER

6775 Daly Rd, Suite 101, West Bloomfield, MI

248.538.9910 | Fax 248.538.9912

Phillip@dkidemolition.com

DR. PATRICIA SCHMIDT, DO

Thank you all for your years of support!

EM: CTH2111@GMAIL.COM

Klimmek Law Office

KNOW YOUR OPTIONS BEFORE YOU HAVE NONE

Financial Management under Chapter 7 or Chapter 13

Chapter 7 - Easy Payment Plans

Chapter 13 - \$0 Down Attorney Fees

Tadd Klimmek, Active Parish Member

248-804-5444 • E-mail: Tadd@KlimmekLawOffice.com

www.klimmeklawoffice.com • 7479 Middlebelt Rd., Suite 2, West Bloomfield Hills, MI



Riverside Chapel



SIMPSON-MODETZ

FUNERAL HOME

5630 Pontiac Lake Rd. • Waterford, MI

(248) 674-4181

"One of the largest and finest family owned funeral homes in Oakland County"

ADT-Monitored Home Security

Get 24-Hour Protection From a Name You Can Trust

- Burglary
- Flood Detection
- Fire Safety
- Carbon Monoxide



SafeStreets

1-855-225-4251

Nadia Dalou

Hall-of-Fame Realtor

Multi-Million Dollar Producer

Your Neighborhood Realtor

248-961-3484

nadiadalou@maxbroock.com

www.nadiadalou.com



SUPPORT OUR ADVERTISERS!



AVAILABLE FOR A LIMITED TIME!

ADVERTISE HERE NOW!

Contact **Dom DiPasqua** to place an ad today!
ddipasqua@4LPi.com or **(800) 477-4574 x6637**



TODD BERTANI • PARISHIONER

Save \$46

ON ANY SERVICE REPAIR OR INSTALLATION

- HEATING
- COOLING
- PLUMBING
- DUCT/DRYER VENT CLEANING

MATHESONHEATING.COM

248-938-0913



4-D-5-4

For ad info. call 1-800-477-4574 • www.lpicommunities.com

15-0031