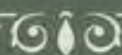




18TH SUNDAY IN ORDINARY TIME



Jesus said to them, "Amen, amen, I say to you, it was not Moses who gave the bread from heaven; my Father gives you the true bread from heaven. For the bread of God is that which comes down from heaven and gives life to the world." - Jn 6:32-33

CHURCH OF ST. CATHARINE

108 Middletown Rd • PO Box 655 • Holmdel, NJ 07733

GROWING IN FAITH AND SERVICE

*"This is what God asks of you, only this: to act justly, to love tenderly
and to walk humbly with your God." Micah 6:8*

August 1, 2021 ▪ 18th Sunday in Ordinary Time

HOLY EUCHARIST

Weekends

Weekdays

Saturday: 5:00 pm, Sunday: 8:00 am, 10:00 am, 12:00 pm

Monday-Friday: 9:00 am

CONFESSION

Saturday: 3:30—4:30 pm

BAPTISM

2nd & 4th Sundays of the month; pre-baptismal class the 1st Tuesday of the month at 7:00 pm. Call Parish Office to register.

ANOINTING OF THE SICK

Can be given for any serious illness, please call the Parish Office.

MARRIAGE

The Diocese of Trenton requires that notice be given to the Parish Office on year in advance of the planned date.

Mass Intentions for Week of August 1, 2021

Saturday, July 31

5:00 pm

Staff Sergeant William R. Neil Jr.

Sunday, August 1

8:00 am

People of the Parish

10:00 am

Cecelia A. Mauro

Fr. Pat McPartland (Living Intention)

12:00 pm

Ronald Acquaviva

Thomas Geslak

Joseph John Baldini III

Milan Zagajec

Monday, August 2 at 9:00 am

John Paterno

Tuesday, August 3 at 9:00 am

Alice & Nicholas Hencoski

Wednesday, August 4 at 9:00 am

Annette Aronne

Thursday, August 5 at 9:00 am

Robert Mariani

First Friday, August 6 at 9:00 am

Jane Cashion Meo

Sunday Financial Stewardship

Weekly Collections for 7/21-7/27/21

Collections — \$12,481.00

Online Giving — \$5,533.00

Total — \$18,014.00

Total Number of Donors — 488

Average donation — \$37.00

Thank you for your continued support.

"As each one has received a gift,

use it to serve one another as good stewards of God's varied grace." (Peter 4:10)

Boglioli Family
Owned and Operated

HOLMDEL

F U N E R A L H O M E

(732) 946-3322

26 South Holmdel Road
Holmdel, NJ 07733

www.holmdelfuneralhome.com
William J. Boglioli, Owner and Manager
N.J. License No. 3652



Doreen DeMarco, ABR® SRES®
Broker Associate
963 Holmdel Rd., Holmdel NJ 07733
Office: 732-946-3200
Cell: 732-241-5015
NJ REALTORS®
BERKSHIRE HATHAWAY HomeServices
Circle of Excellence Sales Award® 2014-2019
Fox & Roach, REALTORS®

JOE BONFIGLIO
MBA, CFP®, CLU, EA
THE NAME TO KNOW



Financial, Retirement & Estate Planning
Income Tax Planning & Preparation
Life Insurance and LTC Solutions

www.joebonfiglio.com

732-772-9000

36 West Main Street, Holmdel

Christine Stephan, Sales Associate
Parishioner - Choir Member
"Your Trusted Real Estate Advisor"

Office: 732-946-9600 x251
Cell 732-768-7067



Christine.stephan@cbmoves.com
998 Holmdel Road, Holmdel, NJ



Kenneth P. Duffy, Managing Partner, NJ Lic. No. 4392
Serving the Community
Since 1932

JOHN E. DAY FUNERAL HOME

Theodore D. Sidun, Manager, NJ Lic. No. 4026
Celebrating 85 Years of Service
to Our Community



85 Riverside Avenue, Red Bank • 732.747.0332
www.johndayfuneralhome.com



It doesn't cost us any more to offer

EXCELLENT SERVICE

Why Should You Pay More?

EVERGREEN

*Memorial Funeral Home
and Cremation Service*

Robert M D'Amico, N.J. Lic. No. 4782

AFFORDABLE FUNERAL & CREMATION SERVICES

Another Way We Salute Our Veterans Every Day: Free Metal Casket for Veterans and their Spouses



1735 Route 35 • Middletown, NJ

732-671-3001

EvergreenMemorialFuneralHome.com

DeMarco's Catering & Gourmet Deli

(732) 566-2112 • **www.demarcoscaterers.com**

Since 1975

Hot & Cold Buffets

Rt.34 & Lloyd Rd. • Aberdeen

FREE Italian Bread w/ \$20 purchase • Mention this ad for 10% OFF

TAX LAWS HAVE CHANGED

Vincent P. Passariello

TAX PREPARATION & PLANNING SERVICES
PERSONAL • CORPORATE • BUSINESS

T: 732-671-8153 • F: 732-671-7883

VINPASAR@MSN.COM • **WWW.VPASSARIELLOTAX.COM**

10 KINGS HIGHWAY, MIDDLETOWN, NJ 07748



Contact

BROWN'S
HEATING, COOLING & PLUMBING
Family Owned and
Operated for 43 Years

88 Birch Street,
Little Silver

Call 732-741-0694 or
Visit **www.brownshe.com**

Services:

- ✓ Heating
- ✓ Cooling
- ✓ Plumbing
- ✓ Handyman

NJ Master HVAC Contractor Lic: #19HC00740900

NJ Master Plumber, James D'Annunzio NJ lic. # 36BI01277900

NJ Home Contractor Lic: #13VH02217800



Ad info. 1-800-477-4574 • Publication Support 1-800-888-4574 • **www.4lpi.com**

St. Catherine, Holmdel, NJ

03-0997

Over 55 years of Dedication and Service to the Greater Bay Shore Area

JOHN F. PFLEGER FUNERAL HOME, INC.

John F. Pfleger Sr. (Founder)
Gregory W. Pfleger (Owner - Inactive)
Evan F. Pfleger (Manager - N.J. Lic. No. 4714)

115 Tindall Road, Middletown, N.J. 07748
Tel. 732-671-1326 • Fax. 732-706-0702
www.pflegerfh.com • info@pflegerfuneralhome.com



JOSEPH URAS MONUMENTS

601 Route 35 • Middletown • 671-1122

100 Route 9, Galleria Shopping Ctr. • Manalapan
625-1822

173 Route 37 W • Toms River • 473-1122

FAMILY OWNED & OPERATED BY A PARISH FAMILY 4 GENERATIONS OF CARING FAMILY SERVICE

Michael Pavone, Owner/Manager • NJ License #4556
Angelica R. Pavone • NJ License #4945

ShorePoint
FUNERAL HOME AND
CREMATION SERVICES, INC.



3269 HIGHWAY 35 NORTH • HAZLET
www.shorepointfh.com

732-203-9200

PREARRANGEMENT & PREPAYMENT PLANS AVAILABLE

HOLMDEL OPHTHALMOLOGY

Diseases and Surgery of the Eye

JOHN J. LAUDI, MD
Parishioner

*Comprehensive and Neuro-Ophthalmology
Family Eyecare*

(732) 946-2222 10 West Main Street / Holmdel NJ 07733
Corner: Routes 34 and 520



WE'RE HIRING AD SALES EXECUTIVES



- Full Time Position with Benefits
- Sales Experience Preferred
- Paid Training
- Overnight Travel Required
- Expense Reimbursement

CONTACT US AT

careers@4LPi.com • www.4LPi.com/careers

Plumbing, Heating
& Cooling, Inc.

Plumb-Rite
Since 1983

732-417-4444

Free Estimates
\$25 Off Any Service
N.J. Plbg. Lic. #8411



Plan your trip to the Holy Land, Europe and beyond
with our family owned travel agency!
We offer customized packages to individuals
and groups at competitive prices.

347-552-0604

CONTACT JOLINE RUKAB AT JOLINE@BIBLETREKTOURS.COM
VISIT US AT WWW.BIBLETREKTOURS.COM

UPGRADE TO A

VIBRANT ad

Contact us for details • 800-477-4574



A privately owned funeral home
providing personal service for
the families of our community.

BRUCE S. THOMPSON
OWNER & MANAGER

NJ LIC #3740
310 Broad Street
Red Bank NJ 07701
Tel: 732.747.0226

www.thompsonmemorial.net

In-Home Senior Care



Comfort Keepers.
Elevating the
Human Spirit

Fully Licensed
and Insured

We provide all kinds of assistance, from personal care to
light housekeeping. We keep seniors in their own homes
and enable them to live independently.

(732) 530-3636

697 Broad St., Shrewsbury, NJ 07702
Redbank-190.ComfortKeepers.com

Serving St Catharine & St Margaret since 2001

SPREAD THE WORD:

**A Thriving, Vibrant
Community Matters**



**Support Our
Advertisers!**



Ad info. 1-800-477-4574 • Publication Support 1-800-888-4574 • www.4lp.com

St. Catherine, Holmdel, NJ

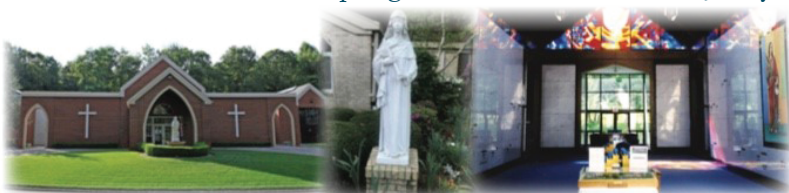
03-0997

HOLMDEL
LANDSCAPING INC.
Professionally Serving
the residents of
Holmdel Since 1979
530-1408

St. Gabriel's Mausoleum Expansion

St. Catharine's Mausoleum named after the Holmdel Church,
formerly the Mission Church of St. Gabriel's

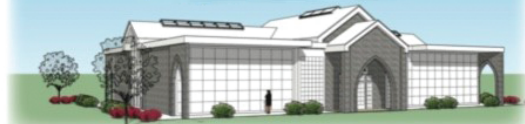
549 Route 520 (Newman Springs Road) • Marlboro, New Jersey



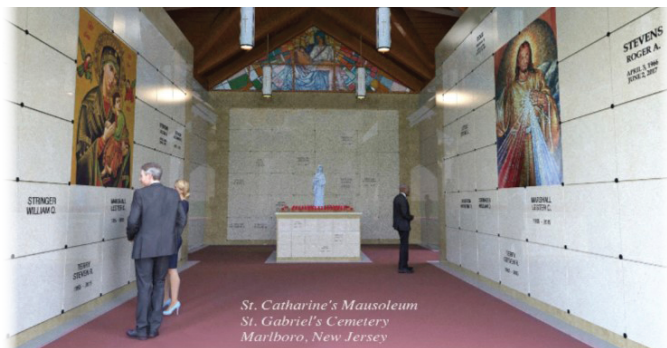
SPECIAL PRE-CONSTRUCTION PRICES

PAYMENTS CAN
BE MADE OVER 24
MONTHS WITH
NO INTEREST
CHARGES.

PHASE III CONSTRUCTION
COMING SOON



www.stgabrielmausoleums.com | 908-208-0786



St. Catharine's Mausoleum
St. Gabriel's Cemetery
Marlboro, New Jersey

Bill & Ed's

Lawn & Landscape Service, Inc.
(732) 219-7155

- Maintenance Programs
- Landscape Design & Installation
- Pavers & Retaining Walls

Call us for a FREE estimate!

ADD-ON POOLS & Patio

(732) 671-0808
Fax: (732) 671-7306

"NSPI Certified Building Professional"

1400 HIGHWAY 35
MIDDLETOWN, N.J.

2102 Long Beach Blvd
Ship Bottom LBI, N.J.

addonpoolsinfo@aol.com

UPGRADE TO A
VIBRANT
Contact us for details **ad**
800-477-4574

THIS SPACE IS AVAILABLE

**AVAILABLE
FOR A LIMITED TIME**

**ADVERTISE YOUR
BUSINESS HERE**

Contact **Servaas Verbiest** to place an ad today!
sverbiest@4LPi.com or (800) 477-4574 x6630

Too Sick for Mass?

SUPPORT OUR PARISH NO MATTER WHERE YOU ARE!

*Sign-up to get your bulletin delivered
right to your inbox!*

www.parishesonline.com



Hay • Straw • Shavings • Grain
Water Softener Salt
Horse & Pet Supplies

842-5270

260 Phalanx Rd. / Colt's Neck

KERRIGAN ELECTRIC

732-615-0005
www.kerriganelectric.com



FREE ESTIMATES



Ad info. 1-800-477-4574 • Publication Support 1-800-888-4574 • www.4lpi.com

St. Catherine, Holmdel, NJ

03-0997