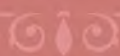




## 12<sup>TH</sup> SUNDAY IN ORDINARY TIME



He woke up, rebuked the wind, and said to the sea, "Quiet! Be still!"  
The wind ceased and there was great calm. Then he asked them,  
"Why are you terrified? Do you not yet have faith?" - Mk 4:39-40

# CHURCH OF ST. CATHARINE

108 Middletown Rd • PO Box 655 • Holmdel, NJ 07733

GROWING IN FAITH AND SERVICE

*"This is what God asks of you, only this: to act justly, to love tenderly  
and to walk humbly with your God." Micah 6:8*

## June 20, 2021 • 12th Sunday in Ordinary Time

### HOLY EUCHARIST

**Weekends**

**Weekdays**

Saturday: 5:00 pm, Sunday: 8:00 am, 10:00 am, 12:00 pm

Monday-Friday: 9:00 am

### CONFESSION

Saturday: 3:30—4:30 pm

### BAPTISM

2<sup>nd</sup> & 4<sup>th</sup> Sundays of the month; pre-baptismal class the 1<sup>st</sup> Tuesday of the month at 7:00 pm. Call Parish Office to register.

### ANOINTING OF THE SICK

Can be given for any serious illness, please call the Parish Office.

### MARRIAGE

The Diocese of Trenton requires that notice be given to the Parish Office on year in advance of the planned date.

## Mass Intentions for Week of June 20, 2021

### Saturday, June 19

**5:00 pm**

Geraldine Chadwick

Marie Zarouni

### Sunday, June 20

**8:00 am**

People of the Parish

**10:00 am**

Anthony Ruggiero

Blanche & Andrew Mazurowski

**12:00 pm**

Louis Nunziato & Joseph Tambaro

George & Richard Orlando & Louis Principato

George Marc-Aurele

Joseph & Frances Forlenza

### Monday, June 21 at 9:00 am

Jerry Tanga

### Tuesday, June 22 at 9:00 am

People of the Parish

### Wednesday, June 23 at 9:00 am

Jeanette Amery

### Thursday, June 24 at 9:00 am

Irma & Edward Fertal

### Friday, June 25 at 9:00 am

Rose Szemplinski

## Sunday Financial Stewardship

### Weekly Collections for 6/9-6/15/21

Collections — \$13,773.00

Online Giving — \$4,960.00

**Total — \$18,733.00**

Total Number of Donors — 442

Average donation — \$42.00

Thank you for your continued support.

*"As each one has received a gift,*

*use it to serve one another as good stewards of God's varied grace." (Peter 4:10)*



**Boglioli Family**  
**Owned and Operated**

# HOLMDEL

F U N E R A L H O M E

**(732) 946-3322**

26 South Holmdel Road  
Holmdel, NJ 07733

**www.holmdelfuneralhome.com**  
**William J. Boglioli, Owner and Manager**  
N.J. License No. 3652



**Doreen DeMarco**, ABR® SRES®  
*Broker Associate*  
963 Holmdel Rd., Holmdel NJ 07733  
Office: 732-946-3200  
Cell: 732-241-5015  
NJ REALTORS®  
Circle of Excellence Sales Award® 2014-2019  
BERKSHIRE HATHAWAY HomeServices  
Fox & Roach, REALTORS®

**JOE BONFIGLIO**  
MBA, CFP®, CLU, EA  
**THE NAME TO KNOW**



Financial, Retirement & Estate Planning  
Income Tax Planning & Preparation  
Life Insurance and LTC Solutions

**[www.joebonfiglio.com](http://www.joebonfiglio.com)**

**732-772-9000**

36 West Main Street, Holmdel

**Christine Stephan, Sales Associate**  
**Parishioner - Choir Member**  
*"Your Trusted Real Estate Advisor"*

Office: 732-946-9600 x251  
Cell 732-768-7067

Christine.stephan@cbmoves.com  
998 Holmdel Road, Holmdel, NJ



Kenneth P. Duffy, Managing Partner, NJ Lic. No. 4392  
Serving the Community  
Since 1932

## JOHN E. DAY FUNERAL HOME

Theodore D. Sidun, Manager, NJ Lic. No. 4026  
Celebrating 85 Years of Service  
to Our Community

85 Riverside Avenue, Red Bank • 732.747.0332

[www.johndayfuneralhome.com](http://www.johndayfuneralhome.com)

It doesn't cost us any more to offer

**EXCELLENT SERVICE**

*Why Should You Pay More?*

**EVERGREEN**

*Memorial Funeral Home  
and Cremation Service*

Robert M D'Amico, N.J. Lic. No. 4782

**AFFORDABLE FUNERAL & CREMATION SERVICES**

**Another Way We Salute Our Veterans Every Day: Free Metal Casket for Veterans and their Spouses**



1735 Route 35 • Middletown, NJ

732-671-3001

[EvergreenMemorialFuneralHome.com](http://EvergreenMemorialFuneralHome.com)

**DeMarco's Catering & Gourmet Deli**

(732) 566-2112 • [www.demarcoscaterers.com](http://www.demarcoscaterers.com)

**Since 1975**

**Hot & Cold Buffets**

Rt.34 & Lloyd Rd. • Aberdeen

FREE Italian Bread w/ \$20 purchase • Mention this ad for 10% OFF

**TAX LAWS HAVE CHANGED**

**Vincent P. Passariello**

TAX PREPARATION & PLANNING SERVICES  
PERSONAL • CORPORATE • BUSINESS

T: 732-671-8153 • F: 732-671-7883

VINPASAR@MSN.COM • [WWW.VPASSARIELLOTAX.COM](http://WWW.VPASSARIELLOTAX.COM)

10 KINGS HIGHWAY, MIDDLETOWN, NJ 07748



Contact

**BROWN'S**  
HEATING, COOLING & PLUMBING  
Family Owned and  
Operated for 43 Years

88 Birch Street,  
Little Silver

Call 732-741-0694 or  
Visit [www.brownshe.com](http://www.brownshe.com)

**Services:**

- ✓ Heating
- ✓ Cooling
- ✓ Plumbing
- ✓ Handyman

NJ Master HVAC Contractor Lic: #19HC00740900

NJ Master Plumber, James D'Annunzio NJ Lic. # 36BI01277900

NJ Home Contractor Lic: #13VH02217800



Ad info. 1-800-477-4574 • Publication Support 1-800-888-4574 • [www.4lpi.com](http://www.4lpi.com)

St. Catherine, Holmdel, NJ

03-0997



Over 55 years of Dedication and Service to the Greater Bay Shore Area

## JOHN F. PFLEGER FUNERAL HOME, INC.

John F. Pfleger Sr. (Founder)  
Gregory W. Pfleger (Owner - Inactive)  
Evan F. Pfleger (Manager - N.J. Lic. No. 4714)

115 Tindall Road, Middletown, N.J. 07748  
Tel. 732-671-1326 • Fax. 732-706-0702  
www.pflegerfh.com • info@pflegerfuneralhome.com



## JOSEPH URAS MONUMENTS

601 Route 35 • Middletown • 671-1122

100 Route 9, Galleria Shopping Ctr. • Manalapan  
625-1822

173 Route 37 W • Toms River • 473-1122

### FAMILY OWNED & OPERATED BY A PARISH FAMILY 4 GENERATIONS OF CARING FAMILY SERVICE

Michael Pavone, Owner/Manager • NJ License #4556  
Angelica R. Pavone • NJ License #4945

*ShorePoint*  
FUNERAL HOME AND  
CREMATION SERVICES, INC.



3269 HIGHWAY 35 NORTH • HAZLET  
www.shorepointfh.com

732-203-9200

PREARRANGEMENT & PREPAYMENT PLANS AVAILABLE

### HOLMDEL OPHTHALMOLOGY

Diseases and Surgery of the Eye

JOHN J. LAUDI, MD  
Parishioner

Comprehensive and Neuro-Ophthalmology  
Family Eyecare

(732) 946-2222 10 West Main Street / Holmdel NJ 07733  
Corner: Routes 34 and 520



### WE'RE HIRING AD SALES EXECUTIVES



- Full Time Position with Benefits
- Sales Experience Preferred
- Paid Training
- Overnight Travel Required
- Expense Reimbursement

CONTACT US AT

careers@4LPi.com • www.4LPi.com/careers

Plumbing, Heating  
& Cooling, Inc.

**Plumb-Rite**  
Since 1983

732-417-4444

Free Estimates  
\$25 Off Any Service  
N.J. Plbg. Lic. #8411



Plan your trip to the Holy Land, Europe and beyond  
with our family owned travel agency!  
We offer customized packages to individuals  
and groups at competitive prices.

347-552-0604

CONTACT JOLINE RUKAB AT JOLINE@BIBLETREKTOURS.COM  
VISIT US AT WWW.BIBLETREKTOURS.COM

UPGRADE TO A

**VIBRANT** ad

Contact us for details • 800-477-4574



A privately owned funeral home  
providing personal service for  
the families of our community.

**BRUCE S. THOMPSON**  
OWNER & MANAGER

NJ LIC #3740  
310 Broad Street  
Red Bank NJ 07701  
Tel: 732.747.0226

www.thompsonmemorial.net

### In-Home Senior Care



**Comfort Keepers.**  
Elevating the  
Human Spirit

Fully Licensed  
and Insured

We provide all kinds of assistance, from personal care to  
light housekeeping. We keep seniors in their own homes  
and enable them to live independently.

(732) 530-3636

697 Broad St., Shrewsbury, NJ 07702  
Redbank-190.ComfortKeepers.com

Serving St Catharine & St Margaret since 2001

## SPREAD THE WORD:

A Thriving, Vibrant  
Community Matters



Support Our  
Advertisers!



Ad info. 1-800-477-4574 • Publication Support 1-800-888-4574 • www.4lp.com

St. Catherine, Holmdel, NJ

03-0997

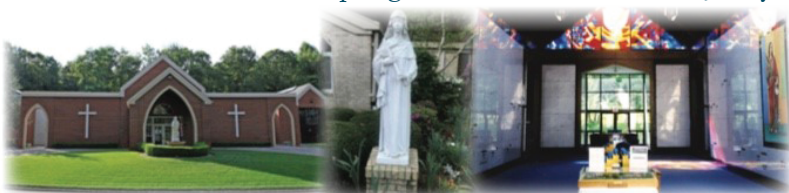


**HOLMDEL**  
LANDSCAPING INC.  
Professionally Serving  
the residents of  
Holmdel Since 1979  
**530-1408**

## St. Gabriel's Mausoleum Expansion

**St. Catharine's Mausoleum** named after the Holmdel Church,  
formerly the Mission Church of St. Gabriel's

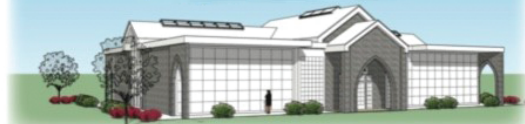
549 Route 520 (Newman Springs Road) • Marlboro, New Jersey



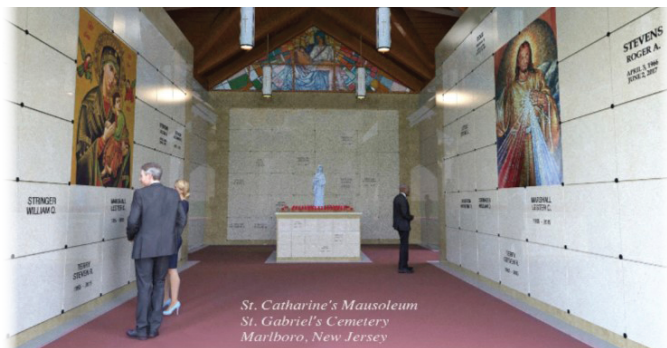
### SPECIAL PRE-CONSTRUCTION PRICES

PAYMENTS CAN  
BE MADE OVER 24  
MONTHS WITH  
NO INTEREST  
CHARGES.

PHASE III CONSTRUCTION  
COMING SOON



[www.stgabrielismausoleums.com](http://www.stgabrielismausoleums.com) | 908-208-0786



St. Catharine's Mausoleum  
St. Gabriel's Cemetery  
Marlboro, New Jersey

## Bill & Ed's

Lawn & Landscape Service, Inc.  
(732) 219-7155

- Maintenance Programs
- Landscape Design & Installation
- Pavers & Retaining Walls

Call us for a FREE estimate!

## ADD-ON POOLS & Patio

(732) 671-0808  
Fax: (732) 671-7306

"NSPI Certified Building Professional"

1400 HIGHWAY 35  
MIDDLETOWN, N.J.

2102 Long Beach Blvd  
Ship Bottom LBI, N.J.

[addonpoolsinfo@aol.com](mailto:addonpoolsinfo@aol.com)

UPGRADE TO A  
**VIBRANT**  
Contact us for details **ad**  
**800-477-4574**

# THIS SPACE IS AVAILABLE

**AVAILABLE  
FOR A LIMITED TIME**

**ADVERTISE YOUR  
BUSINESS HERE**

Contact **Servaas Verbiest** to place an ad today!  
[sverbiest@4LPi.com](mailto:sverbiest@4LPi.com) or (800) 477-4574 x6630

## Too Sick for Mass?

**SUPPORT OUR PARISH NO MATTER WHERE YOU ARE!**

*Sign-up to get your bulletin delivered  
right to your inbox!*

[www.parishesonline.com](http://www.parishesonline.com)



Hay • Straw • Shavings • Grain  
Water Softener Salt  
Horse & Pet Supplies

**842-5270**

260 Phalanx Rd. / Colt's Neck

## KERRIGAN ELECTRIC

**732-615-0005**  
[www.kerriganelectric.com](http://www.kerriganelectric.com)



**FREE ESTIMATES**



Ad info. 1-800-477-4574 • Publication Support 1-800-888-4574 • [www.4lpi.com](http://www.4lpi.com)

St. Catherine, Holmdel, NJ

03-0997